

## Stakeholder Committee Meeting #4

West Elizabeth Enhanced Travel Corridor Plan  
February 10, 2016 – 6:00-8:00 pm

***Present:***

Aaron Buckley  
Madi Book  
Gail McKee  
Bonnie Michael  
Justie Nicol  
Gene Schoonveld  
Jordan Sowell  
Dave Thomas

***Absent:***

Alison Anson  
Rick Callan  
Laurel Grimm  
Jay Henke  
Edward Kendall  
Troy Ocheltree  
Peter Rhoades  
Jean Robbins  
Michael Werner

***Staff & Consultants:***

Charles Alexander, Fehr & Peers Associate  
Emma Belmont, Transfort Transit Planner  
Amy Lewin, FC Moves Senior Transportation Planner  
Rachel Prelog, FC Moves Intern  
Carly Sieff, Fehr & Peers Transportation Planner

**Agenda**

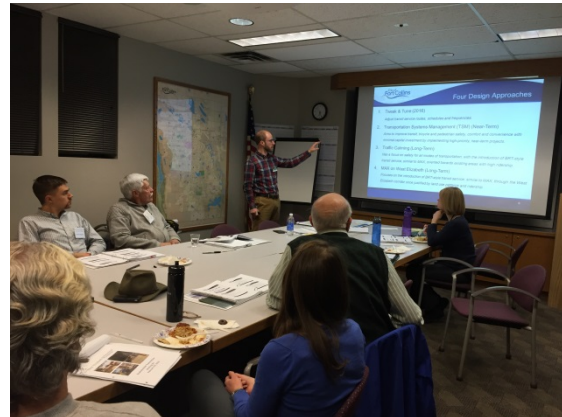
6:00-6:10 – Dinner, settle-in  
6:10-6:20 – Introductions, Project update/review  
6:20-7:30 – Design approach development, evaluation and recommendations  
7:30-7:50 – Keypad polling  
7:50-8:00 – Roundtable discussion

Stakeholder committee members were provided workbooks which served as a tool to help guide participants through the information presented in the agenda above. This included general information relevant to the plan as well as specific activities and information pertinent to the current planning activities.

## Comments

### City Council Work Session

- Are you set on the agenda?
  - Yes but don't know the exact time we will present.
- Is it open to the public?
  - There is no public comment allowed but you can attend or watch on Cable14.



### Transportation System Management

- Is this something like benches at stops?
  - Yes, low cost investments.
- Access Management – how are delivery trucks going to be accommodated? They currently park in the center turn lane to make deliveries.
  - We have heard that concern and will investigate more.
- Transit – Has anyone talked about putting another bus stop on Elizabeth closer to Shields.
- Is there going to be a dedicated right turn at Shields?
  - That is not part of our intersection operation we're proposing.
- 2 stage turn boxes – Is this like what's out on Heatheridge?
  - No, we actually don't have any 2 stage turn boxes anywhere in the city yet.
- Transit signal priority – Is this what emergency vehicles use? Does MAX have this?
  - That is preemption; emergency vehicles have more priority than what we're considering.
  - MAX uses TSP at some intersections.



### Traffic Calming

- Roundabouts – How much do you communicate with the Streets department? I read a roundabout is getting constructed at Constitution and Elizabeth this summer?
  - We work closely with Traffic Operations and have not heard of any plans. We will look into this.
- Leading pedestrian interval – What about right turn limits to allows pedestrians their own signal phase?

- One-way protected bike lane – So you need to address snow removal and plowing with this option.
  - Yes, we are talking to Streets and working through options.
- One-way protected bike lane – Is there room to do parking protected bike lanes?
  - No, not while remaining in the ROW or removing a travel lane.
- Protected intersection – Is this similar to Remington and Laurel bulb outs?
  - That is a roundabout with sidewalk bulb out. This is a different concept.

#### **MAX on West Elizabeth**

- Bus-only lanes – Is this during peak hours or all the time?
  - We analyzed for peak hours but it could be all the time.
- Transit alignment through CSU – What are the benefits of going through CSU?
  - It's faster, more central to campus, better for events and service to the stadium.
- Transit alignment through CSU – It doesn't fit CSU's vision for a vehicle free, pedestrian/bike corridor.
- Transit alignment through CSU – Is it going in between the library and the student center?
  - Yes
- Transit alignment through CSU – Things could really change when the stadium is built and traffic flow changes.

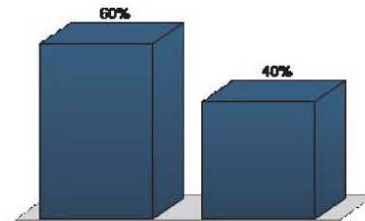
#### **Level of Service Evaluation**

- So in all the approaches we're seeing more delay for driving?
  - There would be more delay to key approaches on some streets.
- What is the notation about dual left turn lanes at Shields and Elizabeth? There are already two left turn lanes at that intersection.
  - This would create separate left turn lanes and a separate through lane. Currently one of the left turn lanes is a left and through.

## Keypad Polling

1. Which bicycle facility would you prefer on West Elizabeth between Shields and City Park, considering safety, comfort and ease of travel? (Multiple Choice)

	Responses	
	Percent	Count
Raised protected bike lane (vertically separated from motor vehicle traffic)	60%	6
In-street protected bike lane (separated from motor vehicle traffic by a planter or raised curb)	40%	4
<b>Totals</b>	<b>100%</b>	<b>10</b>

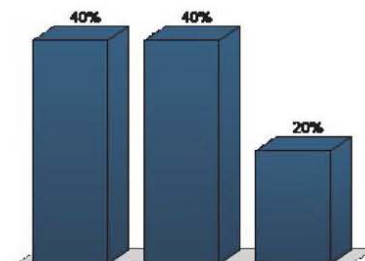


### Comments

- Raised – When they cross intersections it would slow cars down. If they remained raised.
- Raised – They're better because they're separated
- Raised – The raised grade would keep water from flowing down onto them and freezing.
- In-street – Are they going to be wide enough to pass?

2. Do you support center landscaped medians in the western portion (Hillcrest Drive to Overland Trail) of the corridor? (Multiple Choice)

	Responses	
	Percent	Count
I support medians, even where they may block residential driveways	40%	4
I somewhat support medians, but only where they don't block residential driveways	40%	4
I do not support median at all	20%	2
<b>Totals</b>	<b>100%</b>	<b>10</b>

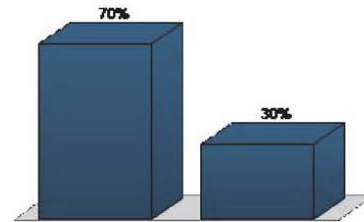


#### Comments

- I don't think streets west of Hillcrest need it. They would be more of a barrier and present maintenance issues

#### 3. Should primary transit service between Constitution Avenue and Shields Street in the short term be on Plum Street or West Elizabeth Street? (Multiple Choice)

	Responses	
	Percent	Count
Plum Street	70%	7
Elizabeth Street	30%	3
Totals	100%	10

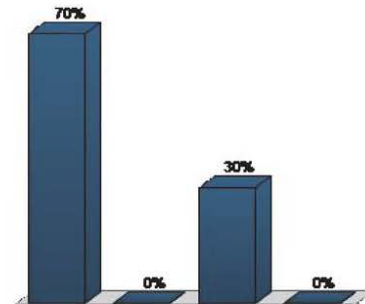


#### Comments

- Pro Plum – Those apartment buildings drive big demand.
- Pro Plum – That's where the people are.
- Pro Plum – I think switching to Elizabeth in the future makes sense but in the interim it should remain on Plum. We need to work on creating pedestrian connection between Plum and Elizabeth first.
- Pro Elizabeth – It's the economic center. All the students that live there, eat there. It's only a block away, a short walk.
- Pro Elizabeth – You guys are taking away my access (Campus West businesses) but I'm not getting the increased foot traffic from transit.
- Pro Elizabeth – We need to increase the vibrancy of the street.
- Pro Elizabeth – Why does it have to be one or another?
- Pro Elizabeth – For international students walking a short distance to transit is no big deal.
- Pro Elizabeth – I think you need to be specific about your timeframe.

4. Roundabouts are being considered at West Elizabeth Street/Taft Hill Road and West Elizabeth Street/Ponderosa Drive. Are you in favor of roundabouts along the corridor? (Multiple Choice)

	Responses	
	Percent	Count
Yes, at Ponderosa and Overland Trail	70%	7
Only at Ponderosa	0%	0
Only at Overland Trail	30%	3
Not at all	0%	0
Totals	100%	10

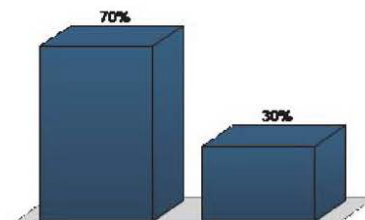


#### Comments

- Not at Ponderosa – It's really tight. It seems too far west.
- Yes at Ponderosa – I live on Ponderosa and support it.
- Yes at Ponderosa – The intersection is currently too big. You have to pull way out to see traffic coming.

5. A Park and Ride facility at CSU Foothills will require a 12-15 minute bus ride from West Elizabeth Street and Shields Street to the facility. Do you think a Park and Ride facility off of West Elizabeth Street and Overland Trail will get adequately used? (Multiple Choice)

	Responses	
	Percent	Count
Yes	70%	7
No	30%	3
Totals	100%	10

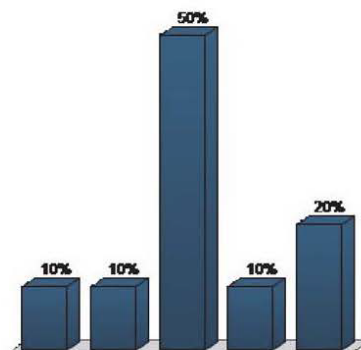


#### Comments

- No – Day to day it absolutely won't get used. Maybe on game days
- No – Not that many people are coming from the north/south.

6. The recommended improvements are likely to change the mode that I use to travel along the West Elizabeth corridor. (Multiple Choice)

	Responses	
	Percent	Count
Strongly agree	10%	1
Agree	10%	1
Neutral/ not sure	50%	5
Disagree	10%	1
Strongly disagree	20%	2
Totals	100%	10



Comments

- It's improving conditions for modes I already use (bike, bus, walk)
- If there were protected bike lanes I might consider biking more.
- If I could take the bus Downtown I'd love it.

## Roundtable Discussion

What two elements are you the most excited about?

Element	Response
Protected Intersection	7
King Soopers Access Management	3
Completed sidewalk network	3
MAX on West Elizabeth (long-term implementation)	1
1 seat ride to Downtown	1
Two-stage turn boxes	1

What 2 elements are you the least excited about?

Element	Response
Bus only lanes	3
Medians west of Taft Hill	3
Transit focused on Plum rather than Elizabeth (near-term implementation)	2
Haven't done enough to divert traffic off Elizabeth	1
Vehicular delay	1
Pondersosa roundabout	1
Haven't done enough to address the conflicts between cars, bike & peds at Shields	1