

Welcome!

West Elizabeth Enhanced Travel Corridor Plan

LISTENING SESSIONS

Tonight's Agenda

- 6:00 - Welcome & Overview of Projects
- 6:20 - Discussion Table #1*
- 6:50 - Discussion Table #2*
- 7:20 - Open House

***Discussion Table Options:** *Biking, Walking, Driving, and Transit.*

Please stop by the “**Get Involved**” table to sign up for a neighborhood walking tour and tell us how you would like to be involved in the planning process.

fcgov.com/westelizabeth **West Elizabeth**  Enhanced Travel
Corridor Plan



WHAT IS AN ENHANCED TRAVEL CORRIDOR?

An Enhanced Travel Corridor (ETC) is a roadway or set of roadways that emphasizes biking, walking, and transit. The intent is to provide active and sustainable travel options that improve the quality of life for the community.

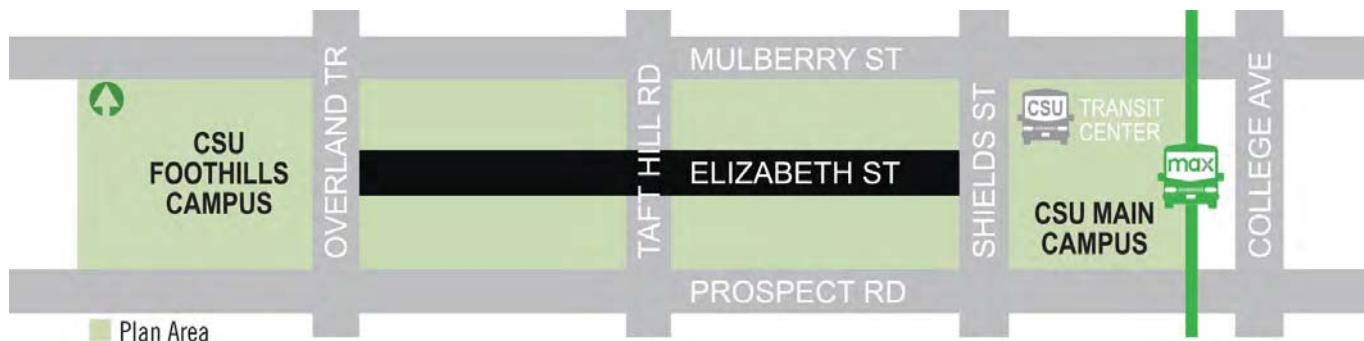
The Transportation Master Plan (2011) lays out a network of ETCs, including the West Elizabeth corridor. The first ETC was the Mason Corridor, which now features MAX Bus Rapid Transit and the Mason Trail. The Harmony Road ETC Plan was completed in 2013.



WHY ARE WE STUDYING WEST ELIZABETH?

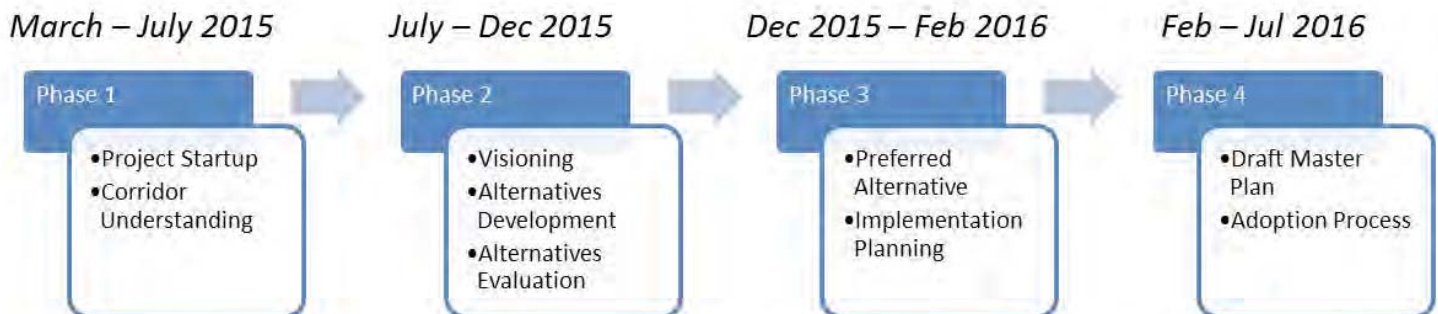
West Elizabeth is an important connection between the CSU Foothills and Main Campuses, as well as shopping centers and other destinations. The corridor already has high transit, bicycling, and walking demand, and an ETC is a comprehensive tool that can help address challenges West Elizabeth faces such as:

- Overcrowded buses
- A higher number of bike crashes than expected
- Sidewalks in some locations that do not meet standards and are not comfortable for walking



WHAT WILL THE PLAN INCLUDE?

The plan will include an assessment of existing conditions, a vision for the future, and recommendations for near-term and longer-term transportation improvements.



Help shape the future of West Elizabeth!

Visit fcgov.com/westelizabeth for more information about the plan, upcoming events, and how to stay involved.

STAY INVOLVED

Input from a broad range of residents, businesses, employers, students, and others is essential to the success of the plan. Using the options below, tell us how you want to stay involved throughout the planning process.

HOW WOULD YOU LIKE TO BE INVOLVED IN THE WEST ELIZABETH ETC PLAN?

(Use dots to select your preferred options)

Open Houses

Presentations to Specific Groups

Workshops

Community-wide Presentations

Neighborhood Meetings

Drop-In Conversations w/Staff

Focus Groups

Online Surveys

Stakeholder Committee

Online Activities (e.g., WikiMap)

Walking Tours

Booths at Other Events

Bicycle Tours

Other (please write in the space below)

WHAT IS THE BEST WAY TO REACH YOU? *(Use dots to select your preferred options)*

Postcard Mailing

Flyer/Poster

Direct Email

Facebook

Email Newsletters

Twitter

Neighborhood Newsletters

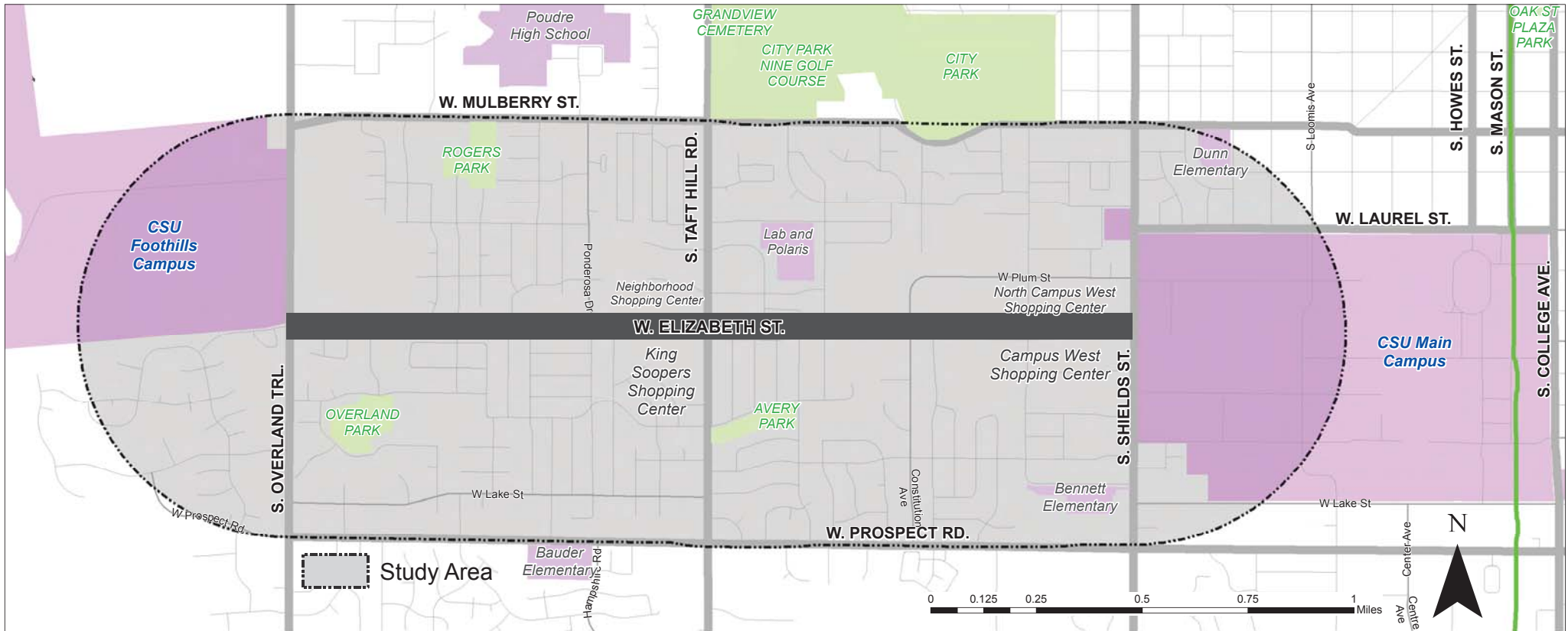
Nextdoor

Newspaper

Other (please write in the space below)

Utility Bill

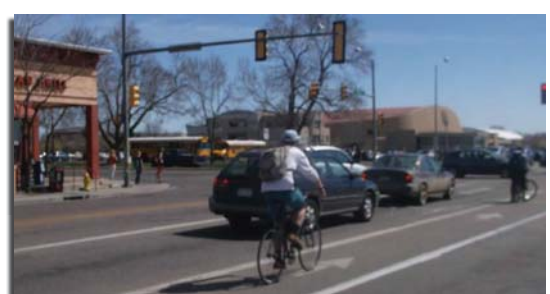
VICINITY MAP



Elizabeth west of Ponderosa



Elizabeth west of Taft Hill



Shields and Elizabeth

Input from a broad range of residents, businesses, employers, students, and others is essential to the success of the plan. Using the options below, tell us how you want to stay involved throughout the planning process.

HOW WOULD YOU LIKE TO BE INVOLVED IN THE WEST ELIZABETH ETC PLAN?

(Use dots to select your preferred options)

☒ ☒ Open Houses

☒ ☒ Workshops

☒ ☒ ☒ ☒ Neighborhood Meetings

☒ Focus Groups

☒ ☒ ☒ ☒ Stakeholder Committee

☒ ☒ ☒ Walking Tours

☐ Bicycle Tours

☐ Presentations to Specific Groups

☐ Community-wide Presentations

☐ Drop-In Conversations w/Staff

☒ Online Surveys

☒ Online Activities (e.g., WikiMap)

☐ Booths at Other Events

☐ Other (please write in the space below)

WHAT IS THE BEST WAY TO REACH YOU? *(Use dots to select your preferred options)*

☒ ☒ Postcard Mailing

☒ ☒ Direct Email

☒ ☒ ☒ ☒ Email Newsletters

☒ Neighborhood Newsletters

☒ Newspaper

☐ Utility Bill

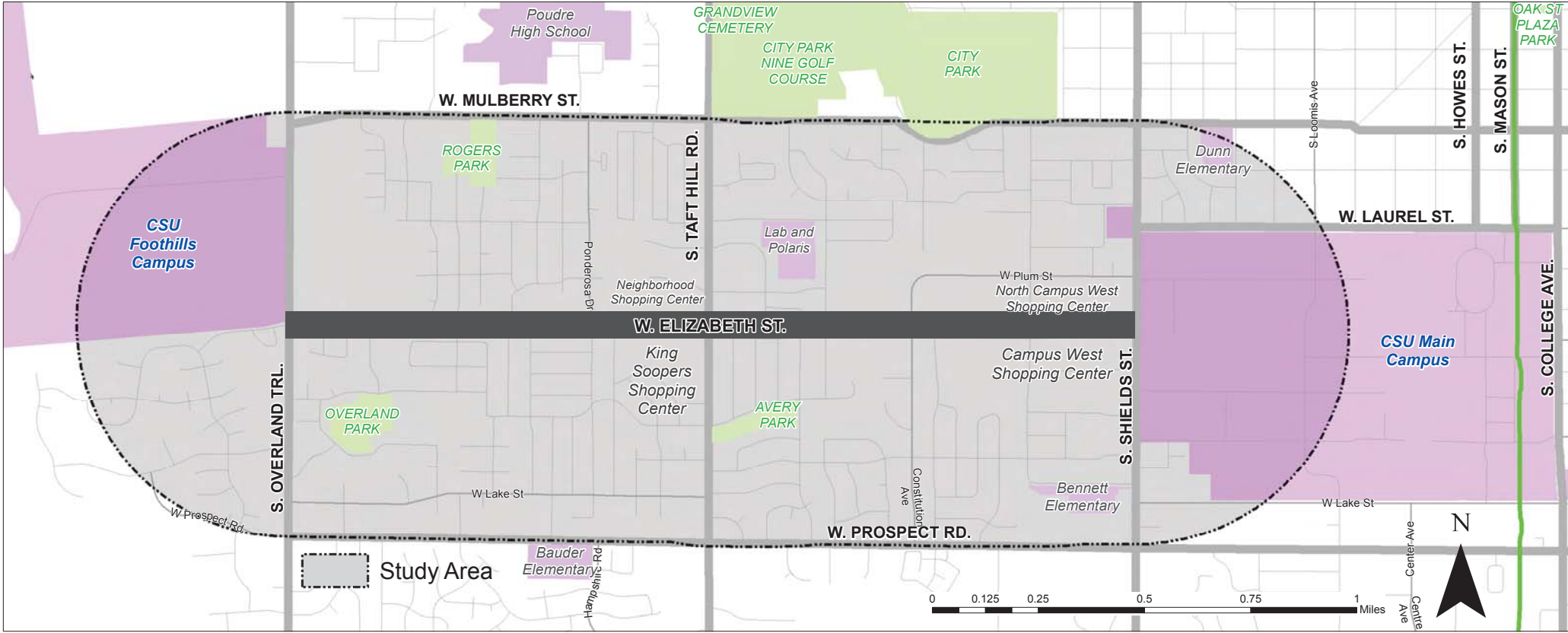
☒ Flyer/Poster

☒ Facebook

☐ Twitter

☐ Nextdoor

☐ Other (please write in the space below)



Biking Map - Existing Conditions

*W. Elizabeth between Overland and Ponderosa:
Existing Condition: Striped Bike Lanes are Intermittent

Foothills Campus

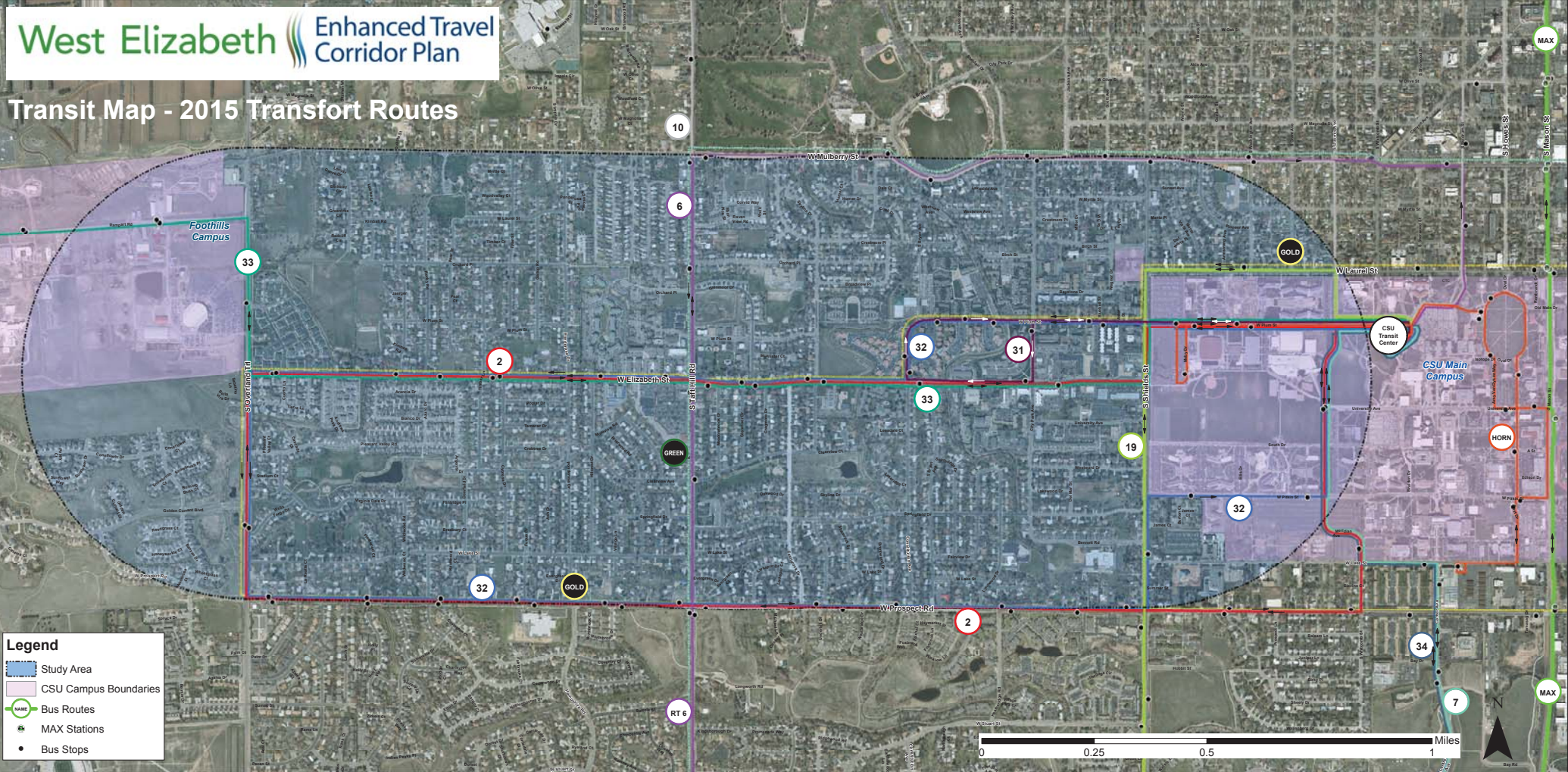
CSU Main Campus

Legend

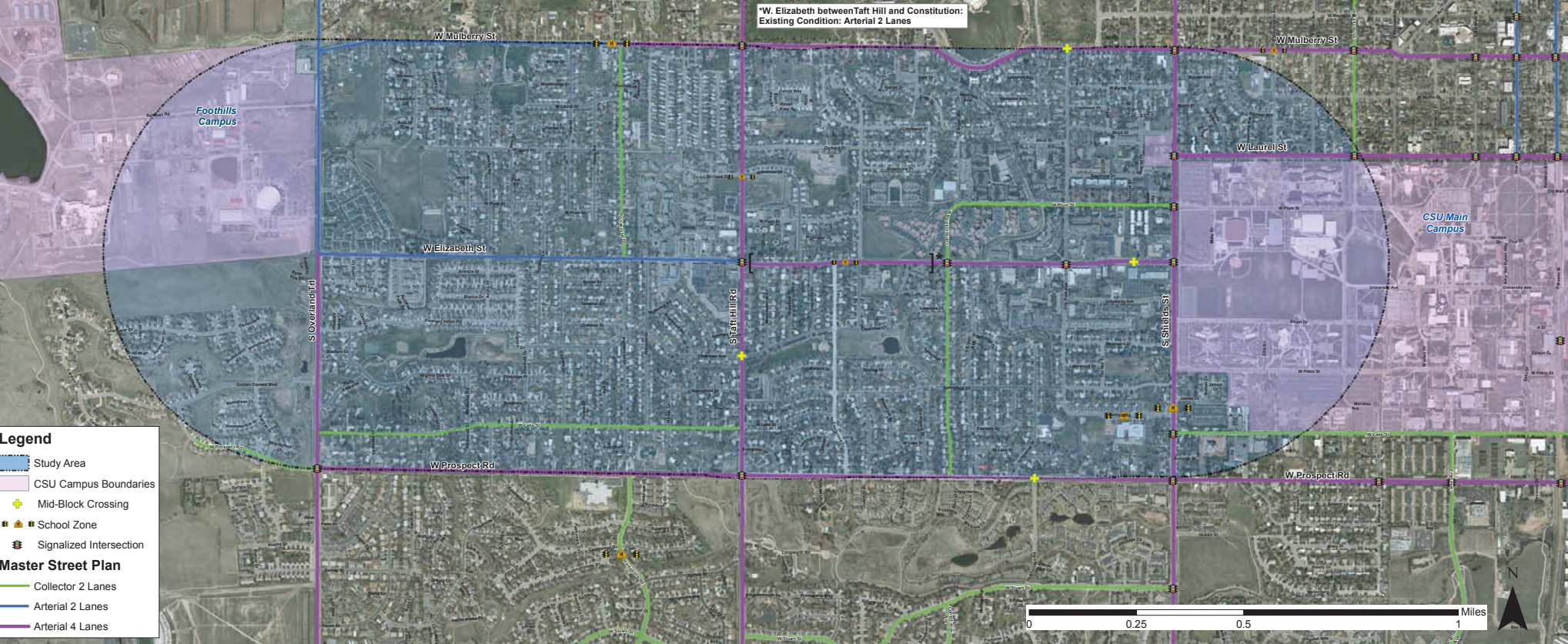
- Study Area
- CSU Campus Boundaries
- Existing Bicycle Facilities**
 - Buffered Bike Lane
 - Bike Lane
 - Bike Route (Shared Roadway)



Transit Map - 2015 Transfort Routes



Driving Map - Master Street Plan Overlay



Walking/Pedestrian Facilities Map

