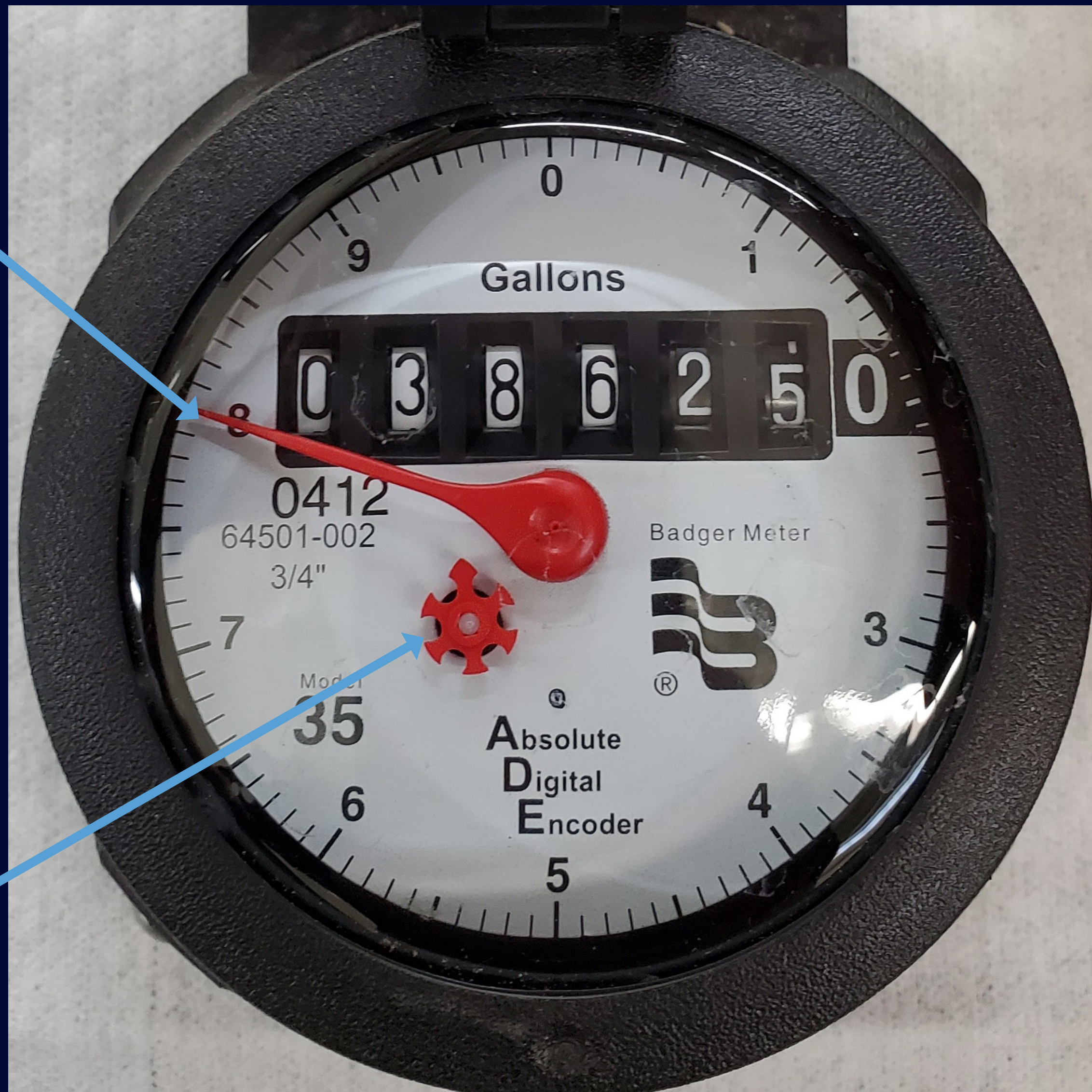


Badger 3/4-Inch Meter Register (A)

The sweep hand is measuring number of gallons on the meter. It represents the ones digit of the read on the meter (where the static zero is). A complete rotation of the hand equals 10 gallons. Since this sweep hand is on 8, the read is 386,258 gallons. The system will not report this digit.

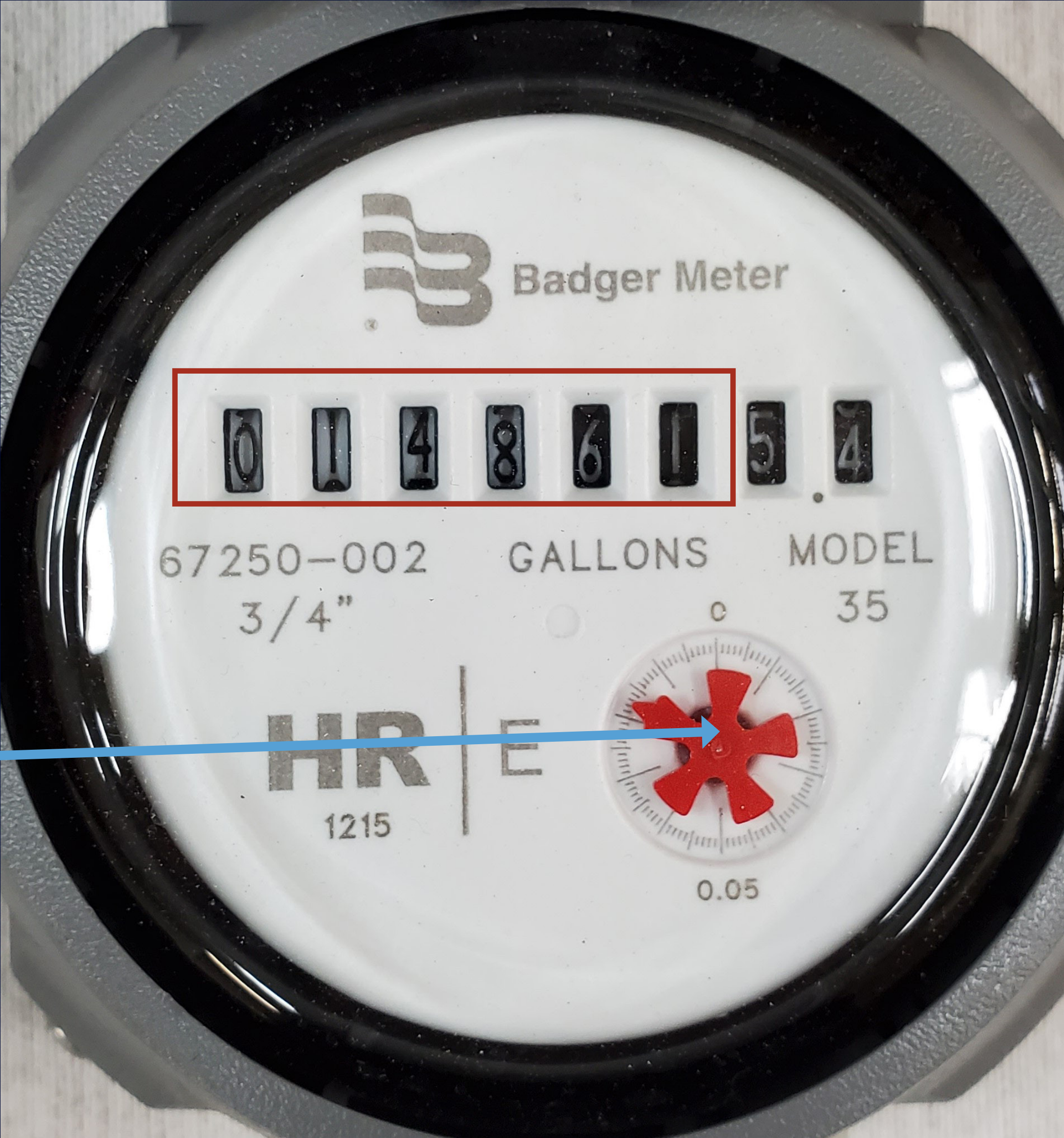
Low-flow indicator will measure tenths of gallons. If the low-flow indicator is moving, there is water flowing through the meter.



The total usage on this meter is 386,258 gallons.

System Reporting:
The system will report the read as 386,250 gallons, since it only reports to the tenth digit.

Badger 3/4-Inch Meter Register (B)



Low-flow indicator will measure hundredths of gallons. If the low-flow indicator is moving, there is water flowing through the meter.

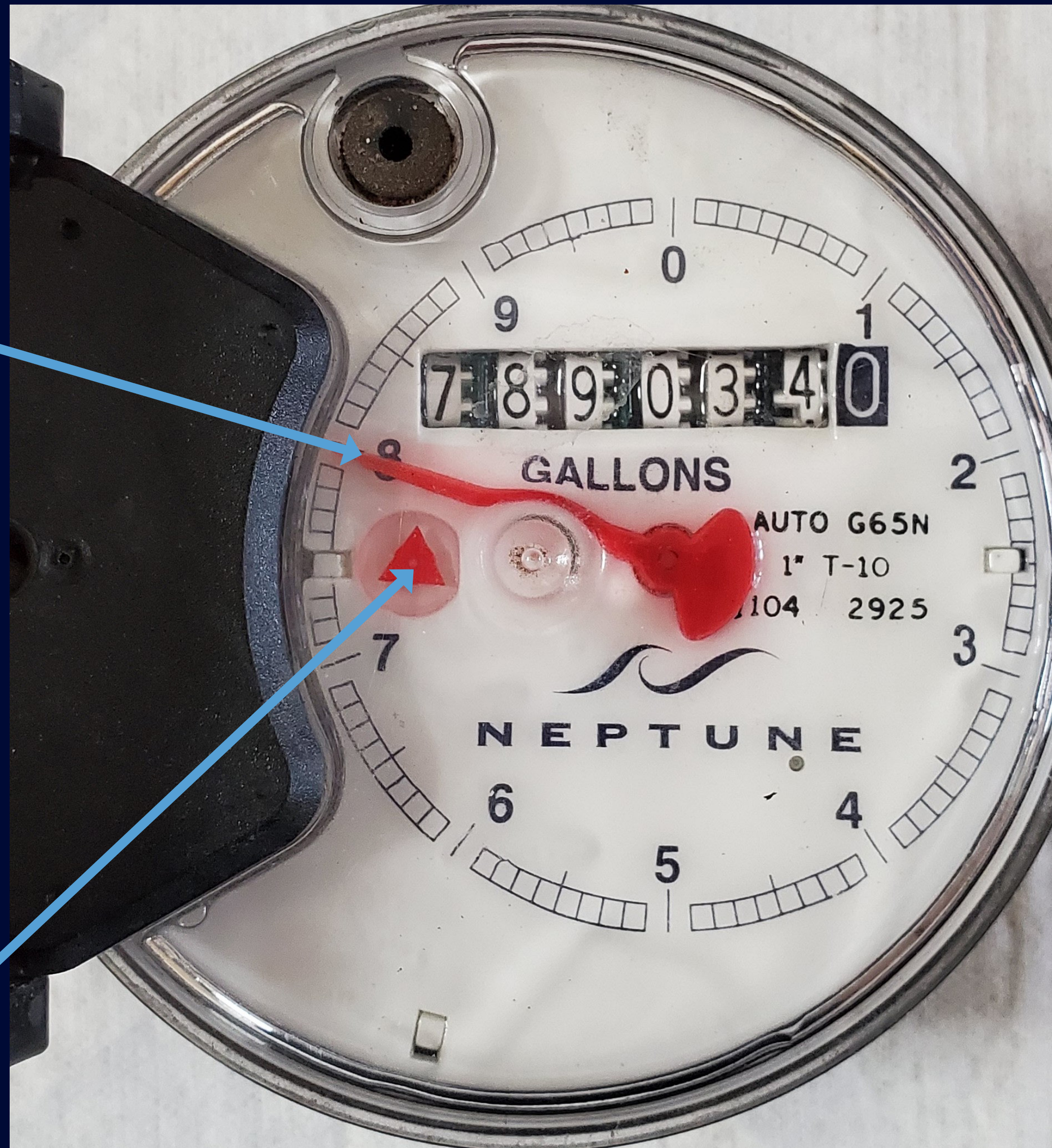
The total usage on this meter is 148,615.4 gallons.

System Reporting: The system reads the first six digits to report usage. For this meter, it will report 148,610 gallons, since it reports to the ten digit.

Neptune 1-Inch Meter Register

The sweep hand is measuring number of gallons on the meter. It represents the ones digit of the read on the meter (where the static zero is). A complete rotation of the hand equals 10 gallons. Since this sweep hand is on 8, the read is 7,890,348 gallons. The system will not report this digit.

Low-flow indicator will measure tenths of gallons. If the low-flow indicator is moving, there is water flowing through the meter.

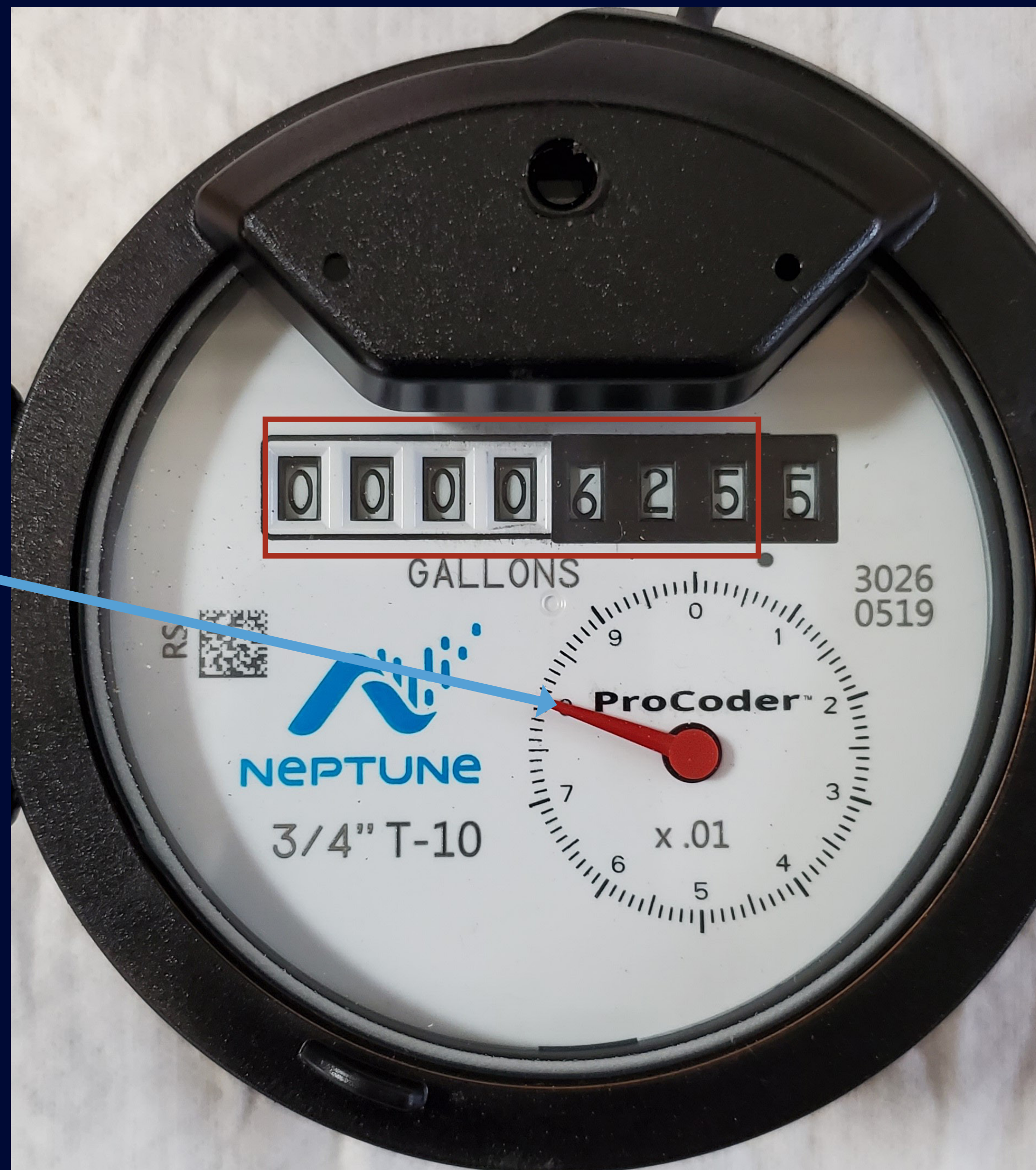


The total usage on this meter is 7,890,348.

System Reporting:
The system will report the read as 7,890,300 gallons, since it only reports in intervals of 50. Once the tenth digit is 6, 7, 8 or 9, the reading will be reported as 7,890,350.

Neptune 3/4-Inch Meter Register

Sweep hand will measure hundredths of gallons. If the sweep hand is moving, there is water flowing through the meter.



The total usage on this meter is 625.5 gallons.

System Reporting:
The system reads the first six digits to report usage. For this meter, it will report 620 gallons, since it reports to the ten digit.