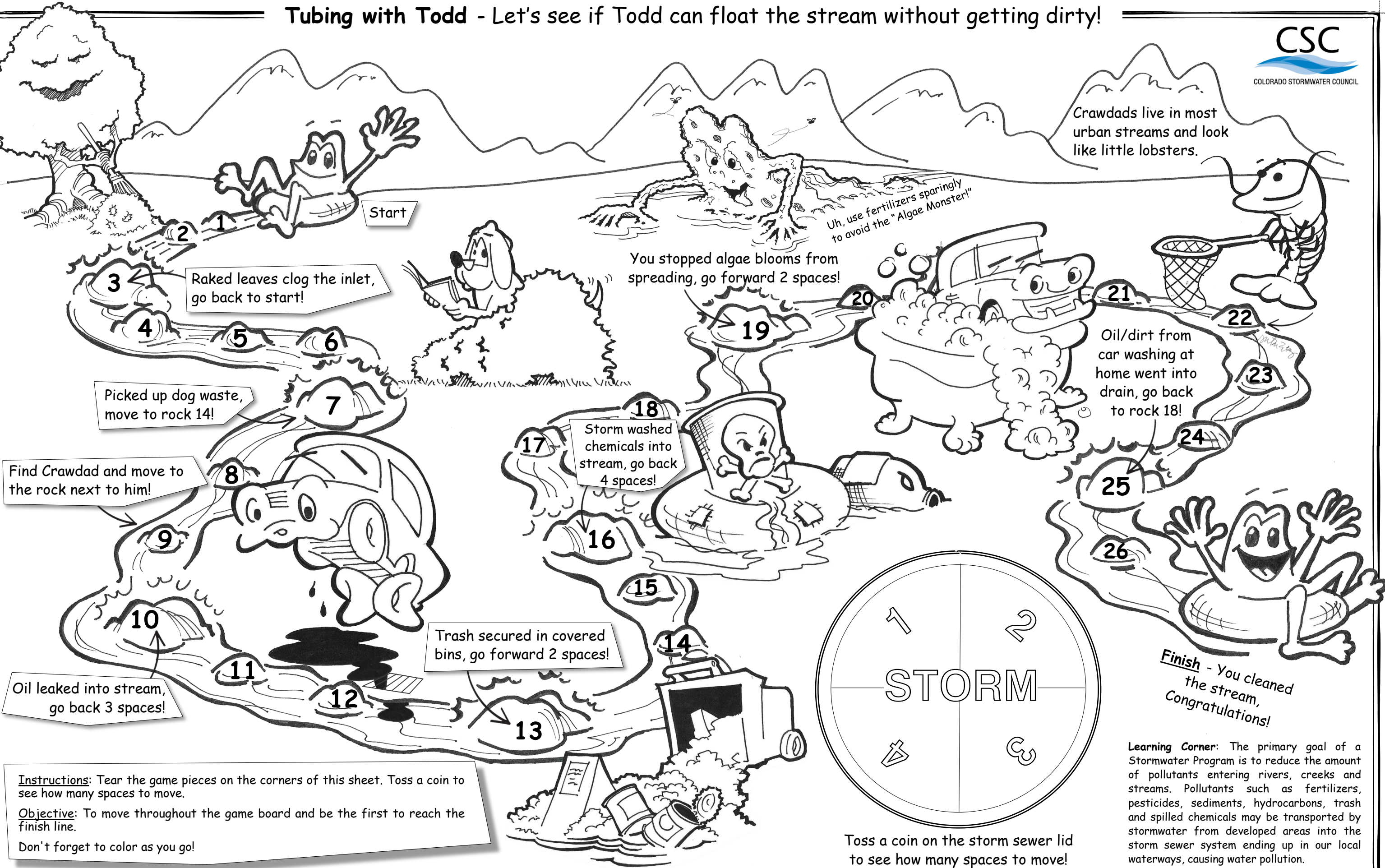


Tubing with Todd - Let's see if Todd can float the stream without getting dirty!



Crawdads live in most urban streams and look like little lobsters.



Instructions: Tear the game pieces on the corners of this sheet. Toss a coin to see how many spaces to move.
Objective: To move throughout the game board and be the first to reach the finish line.
Don't forget to color as you go!



Toss a coin on the storm sewer lid to see how many spaces to move!

Finish - You cleaned the stream, Congratulations!

Learning Corner: The primary goal of a Stormwater Program is to reduce the amount of pollutants entering rivers, creeks and streams. Pollutants such as fertilizers, pesticides, sediments, hydrocarbons, trash and spilled chemicals may be transported by stormwater from developed areas into the storm sewer system ending up in our local waterways, causing water pollution.

STORMWATER TERMS WORD FIND

I	Y	I	U	I	X	Y	W	S	H	I	G	S	B	R
X	P	G	Y	S	P	O	O	P	C	H	E	L	Q	G
E	V	S	S	E	L	C	I	Z	K	V	M	Z	N	K
B	B	K	D	P	Y	A	G	P	A	L	D	G	O	A
Y	Y	I	M	I	V	A	C	E	J	S	E	D	A	T
X	R	W	M	P	H	M	L	I	U	S	D	A	P	R
T	M	P	A	T	A	I	Z	S	M	U	M	O	K	A
A	W	E	U	P	P	D	T	I	V	E	I	A	M	S
S	R	E	Z	I	L	I	T	R	E	F	H	V	G	H
K	T	A	L	G	A	E	R	H	X	R	U	C	N	P
J	O	P	F	T	V	V	R	D	L	P	L	U	I	D
A	D	E	P	U	G	P	J	Q	R	V	N	G	P	X
Y	W	F	F	U	L	P	D	D	A	B	J	R	M	A
J	Q	S	U	S	Z	O	T	T	L	V	G	N	U	P
H	J	W	R	T	A	A	X	F	M	K	W	K	D	W

- ALGAE
- CHEMICALS
- DIRT
- DUMPING
- FERTILIZERS
- LEAKS
- LEAVES
- POOP
- TRASH

MANHOLE MAZE

