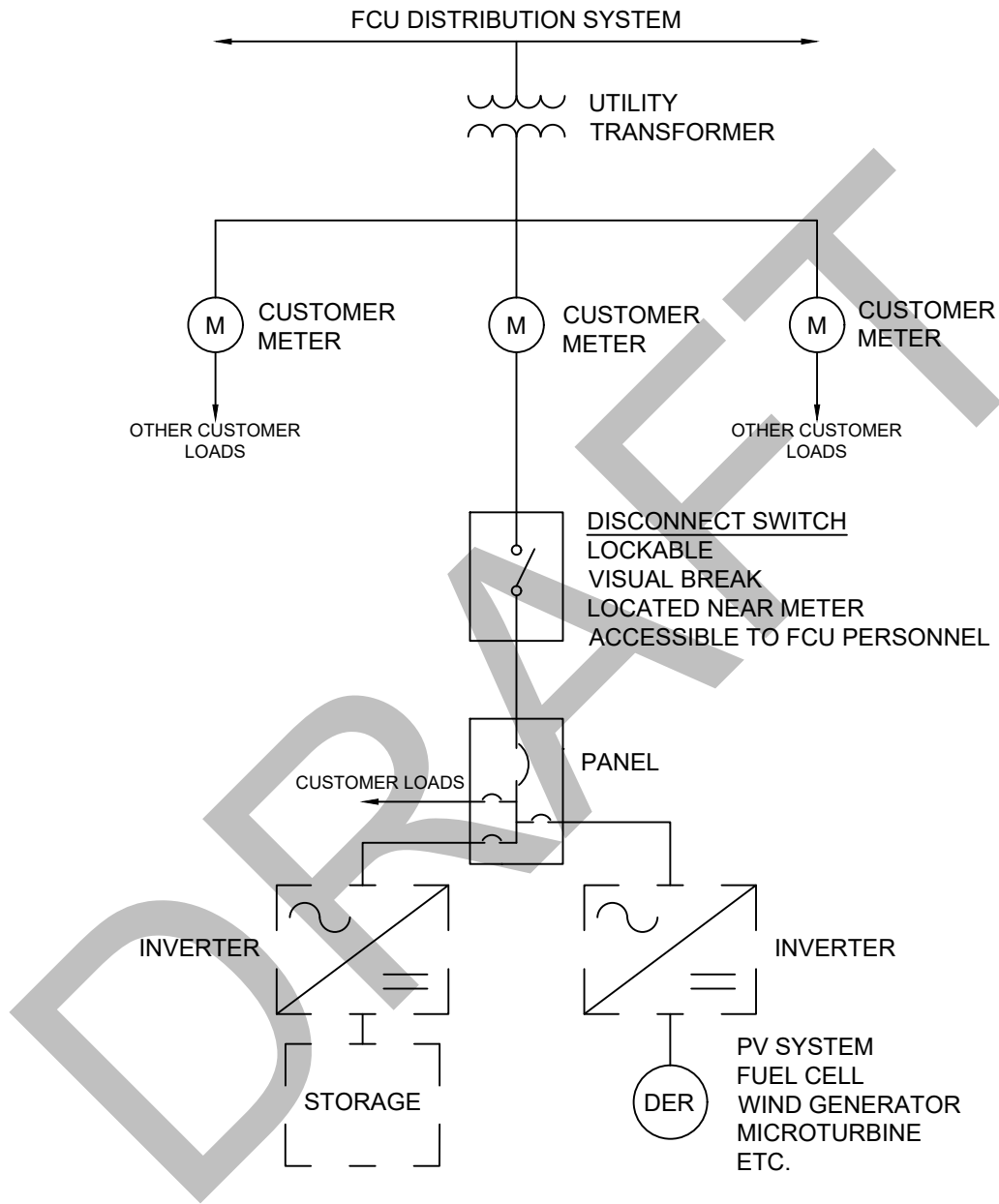


# INVERTER CONNECTED DER INCLUDING STORAGE BELOW 1000KW

## CONFIGURATION: AC COUPLED WITH NO BACKED UP LOADS



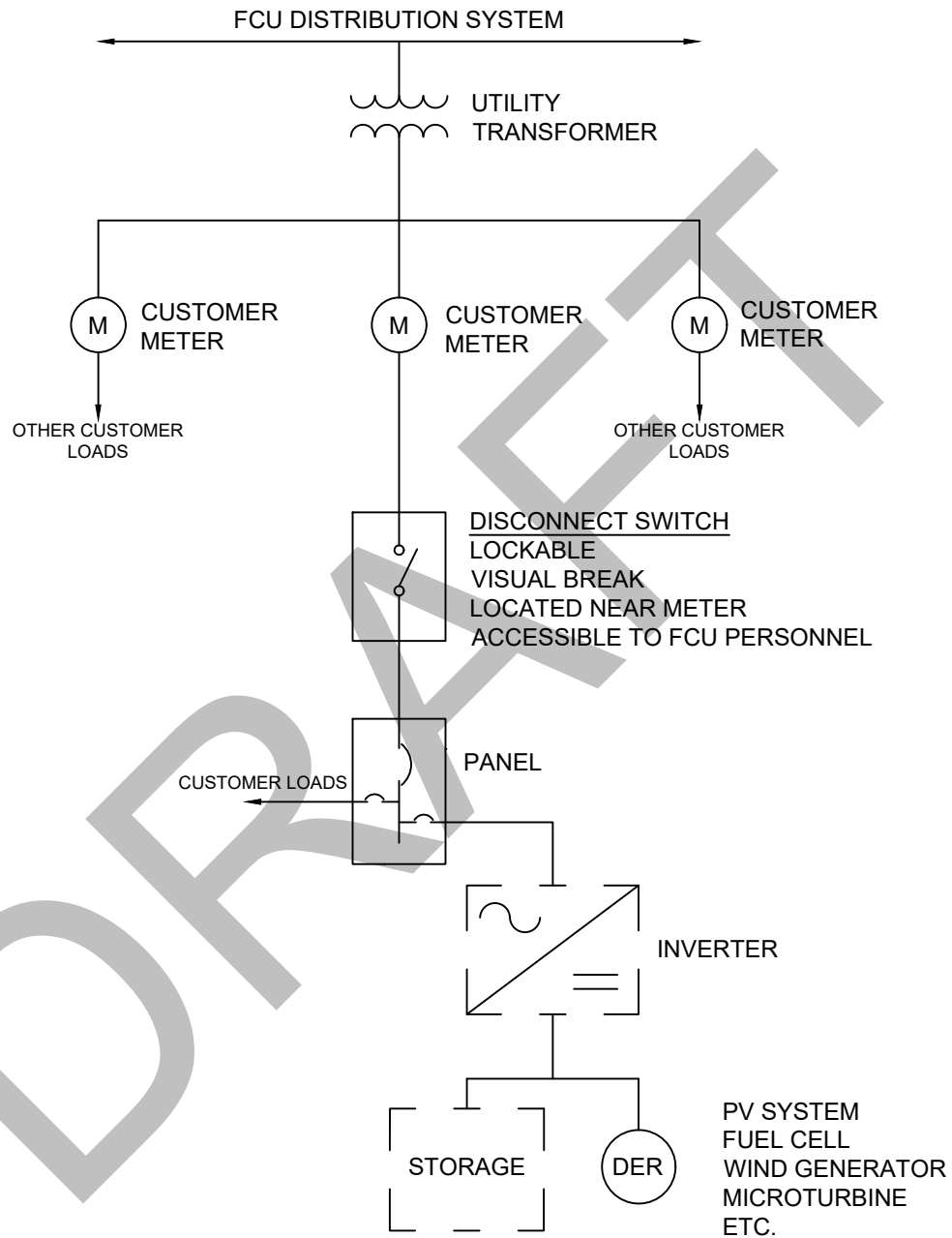
**NOTE:**

ADDITIONAL DISCONNECTS ARE ACCEPTABLE, HOWEVER LOCATION AND REQUIREMENTS OF THE DISCONNECT SHOWN MUST BE SATISFIED.

THIS DRAWING IS AN EXAMPLE AND MAY NOT ENCOMPASS ALL SYSTEMS. SEE FCU INTERCONNECTION STANDARDS FOR COMPLETE REQUIREMENTS.

# INVERTER CONNECTED DER INCLUDING STORAGE BELOW 1000KW

## CONFIGURATION: DC COUPLED WITH NO BACKED UP LOADS



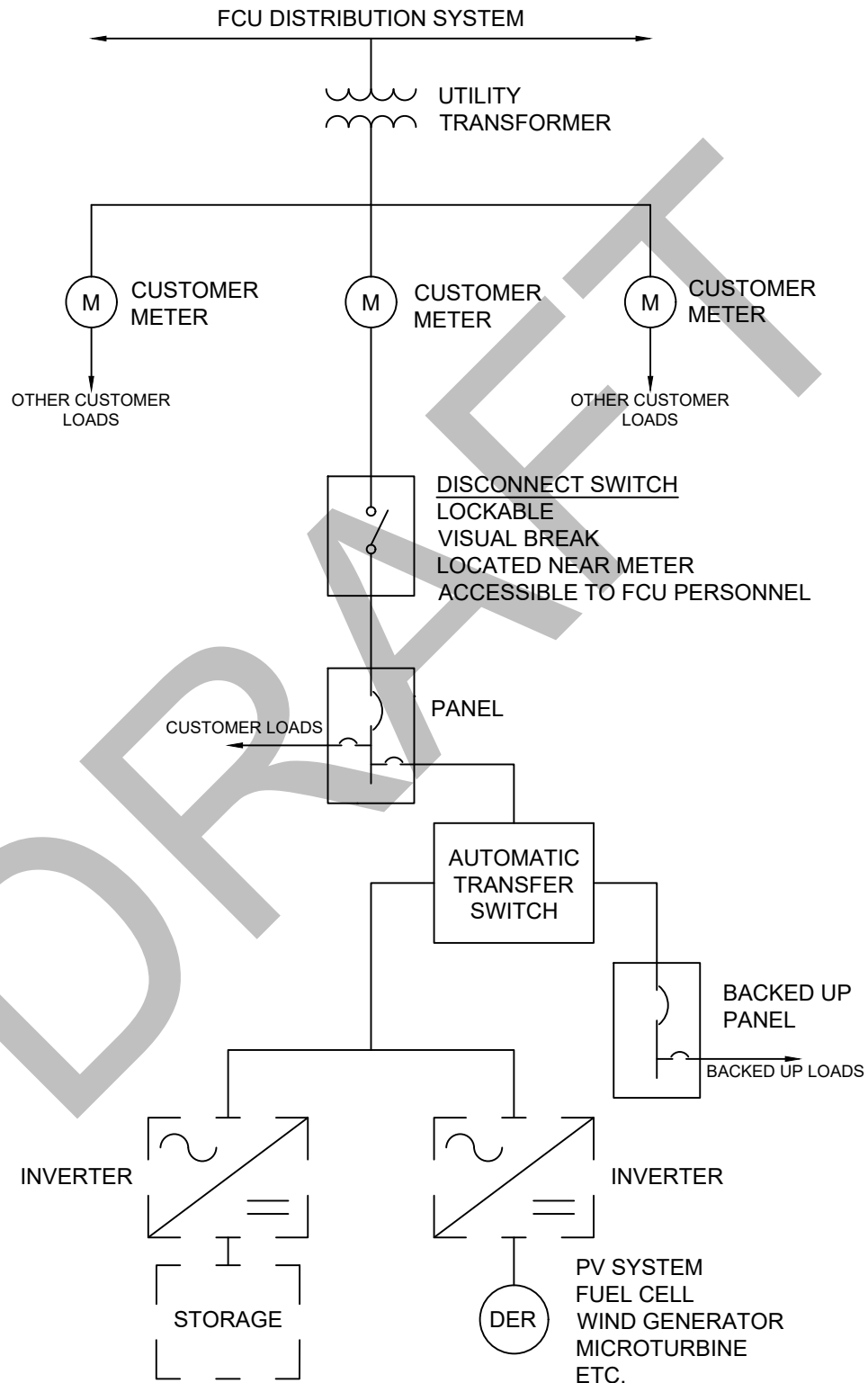
**NOTE:**

ADDITIONAL DISCONNECTS ARE ACCEPTABLE, HOWEVER LOCATION AND REQUIREMENTS OF THE DISCONNECT SHOWN MUST BE SATISFIED.

THIS DRAWING IS AN EXAMPLE AND MAY NOT ENCOMPASS ALL SYSTEMS. SEE FCU INTERCONNECTION STANDARDS FOR COMPLETE REQUIREMENTS.

# INVERTER CONNECTED DER INCLUDING STORAGE BELOW 1000KW

## CONFIGURATION: AC COUPLED WITH BACKED UP LOADS NON-STORAGE DER OPERATIONAL DURING BACKUP



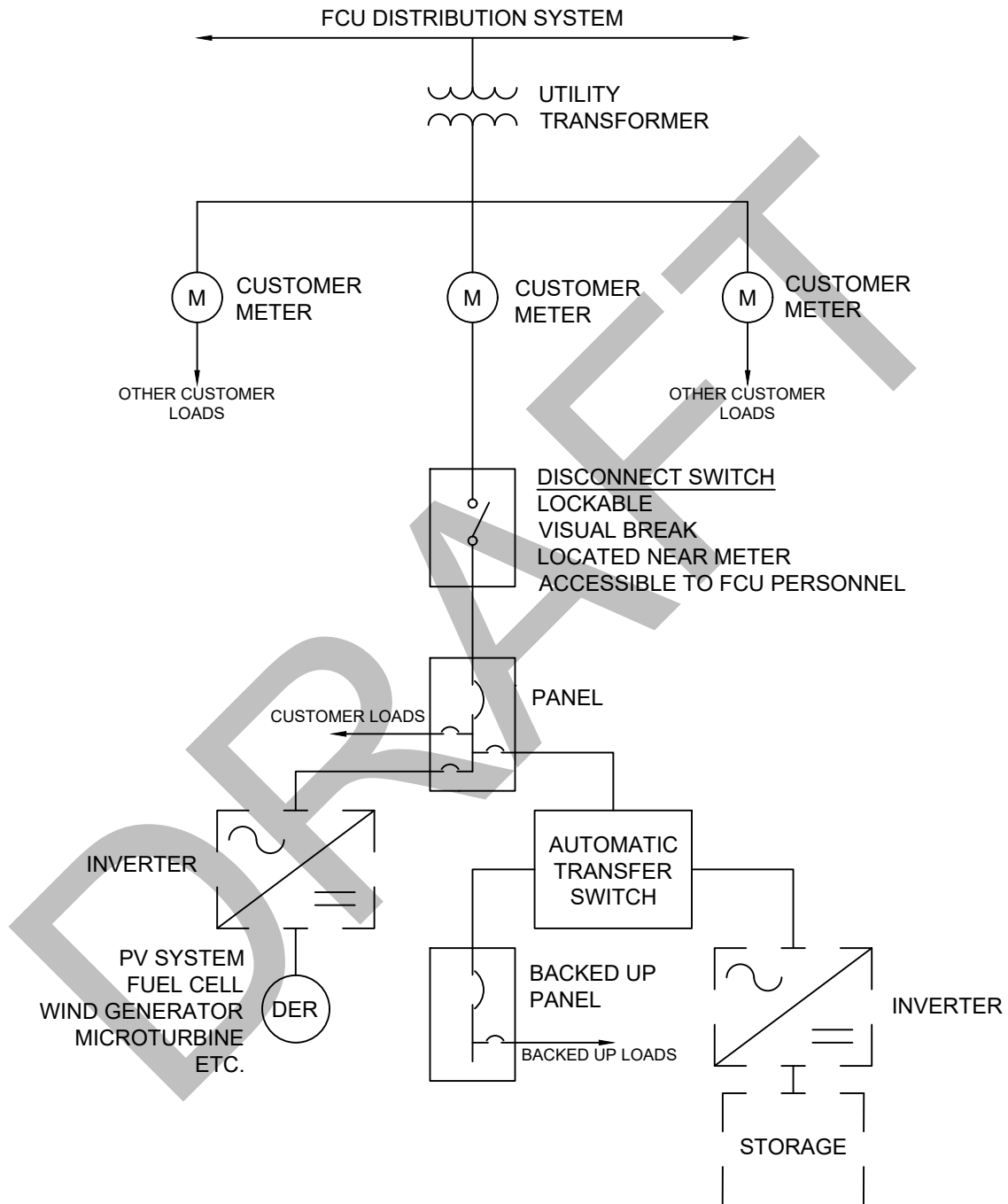
**NOTE:**  
ADDITIONAL DISCONNECTS ARE ACCEPTABLE, HOWEVER LOCATION AND REQUIREMENTS OF THE DISCONNECT SHOWN MUST BE SATISFIED.

THIS DRAWING IS AN EXAMPLE AND MAY NOT ENCOMPASS ALL SYSTEMS.  
SEE FCU INTERCONNECTION STANDARDS FOR COMPLETE REQUIREMENTS.

Revised 5/8/2020

# INVERTER CONNECTED DER INCLUDING STORAGE BELOW 1000KW

## CONFIGURATION: AC COUPLED WITH BACKED UP LOADS NON-STORAGE DER NOT OPERATIONAL DURING BACKUP



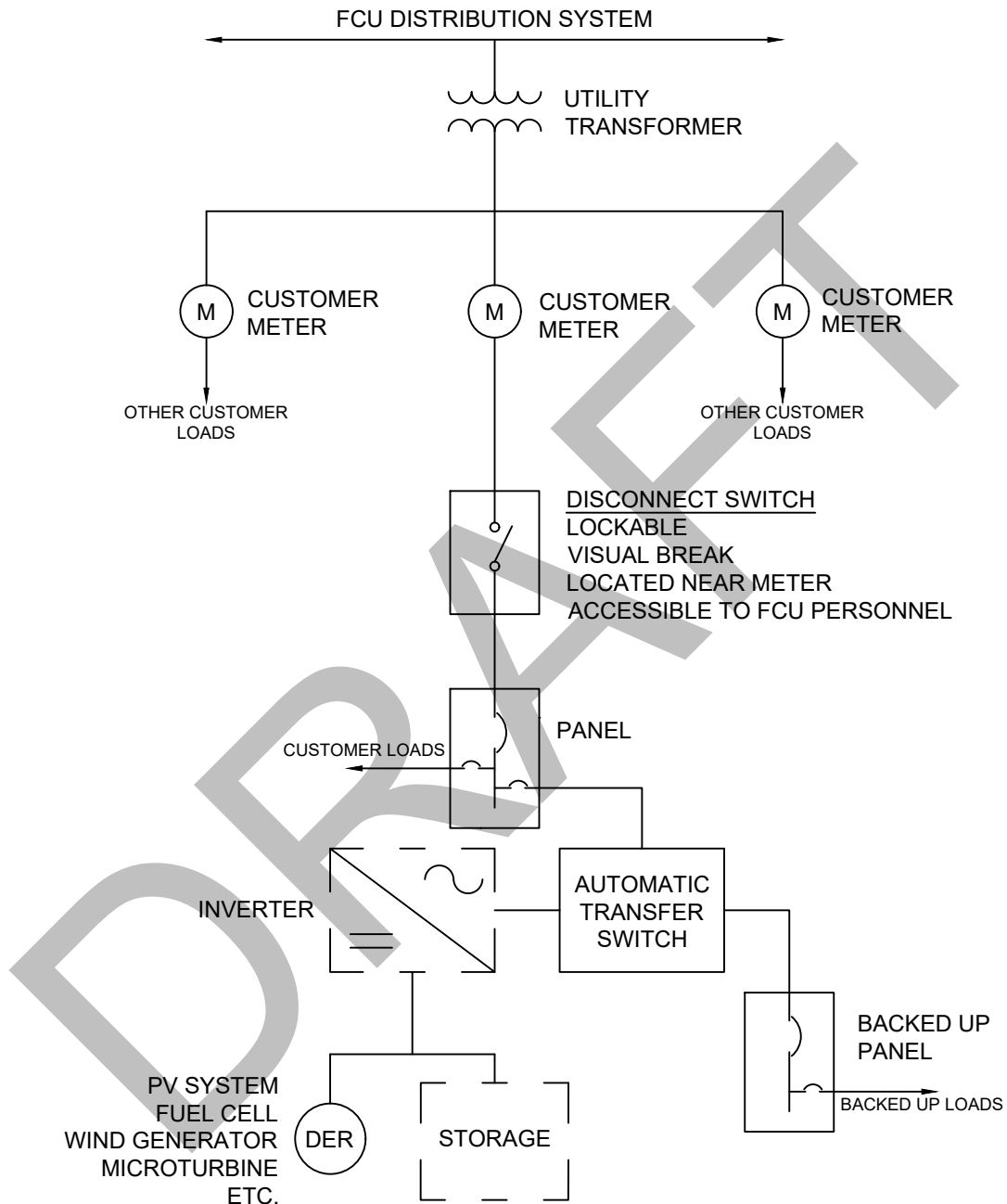
**NOTE:**

ADDITIONAL DISCONNECTS ARE ACCEPTABLE, HOWEVER LOCATION AND REQUIREMENTS OF THE DISCONNECT SHOWN MUST BE SATISFIED.

THIS DRAWING IS AN EXAMPLE AND MAY NOT ENCOMPASS ALL SYSTEMS. SEE FCU INTERCONNECTION STANDARDS FOR COMPLETE REQUIREMENTS.

# INVERTER CONNECTED DER INCLUDING STORAGE BELOW 1000KW

## CONFIGURATION: DC COUPLED WITH BACKED UP LOADS



**NOTE:**

ADDITIONAL DISCONNECTS ARE ACCEPTABLE, HOWEVER LOCATION AND REQUIREMENTS OF THE DISCONNECT SHOWN MUST BE SATISFIED.

THIS DRAWING IS AN EXAMPLE AND MAY NOT ENCOMPASS ALL SYSTEMS. SEE FCU INTERCONNECTION STANDARDS FOR COMPLETE REQUIREMENTS.