



Audubon | ROCKIES

# Habitat Hero

**PLANTING A BETTER WORLD  
FOR BIRDS AND PEOPLE**





## Metrics

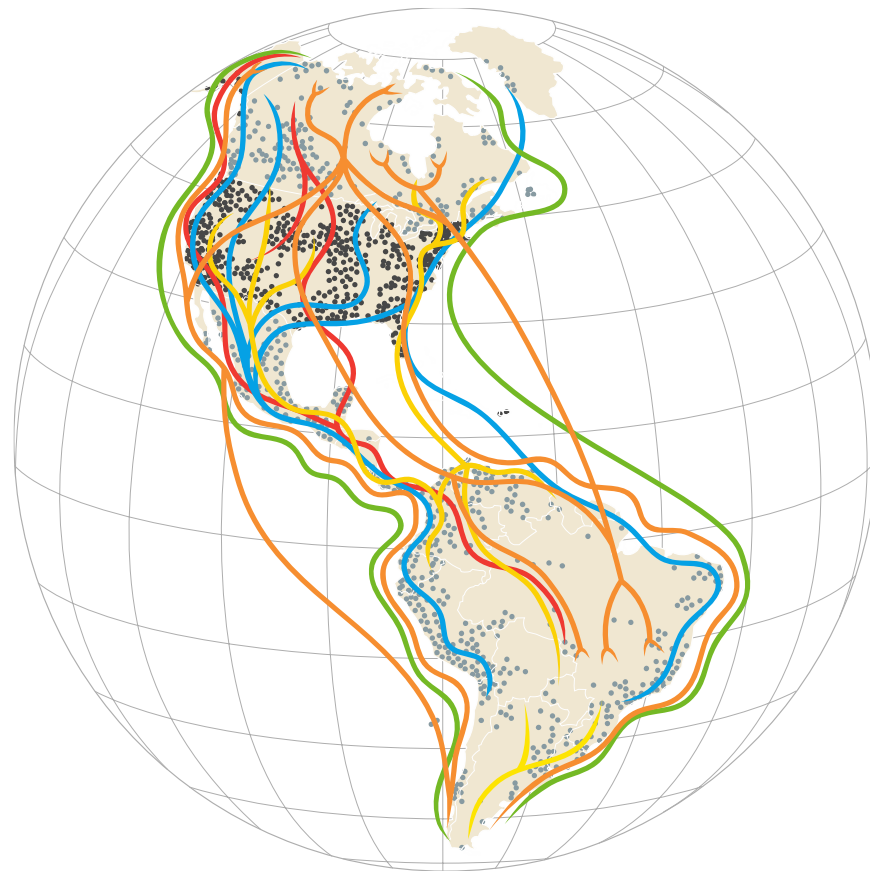
### Empowering Engagement

Promote citizenship through hands-on activities that can benefit the greater community!

- Habitat Hero Certifications, 330+
- Educational Programming, 33 events/4,500 individuals
- Volunteers
- Online Resource Library
- Social Media
- Demonstration Gardens + Signage

## Flyways of the Americas

Each year, billions of migratory birds follow these flyways from wintering to breeding grounds and back again.



Shorebirds



Land birds



Seabirds



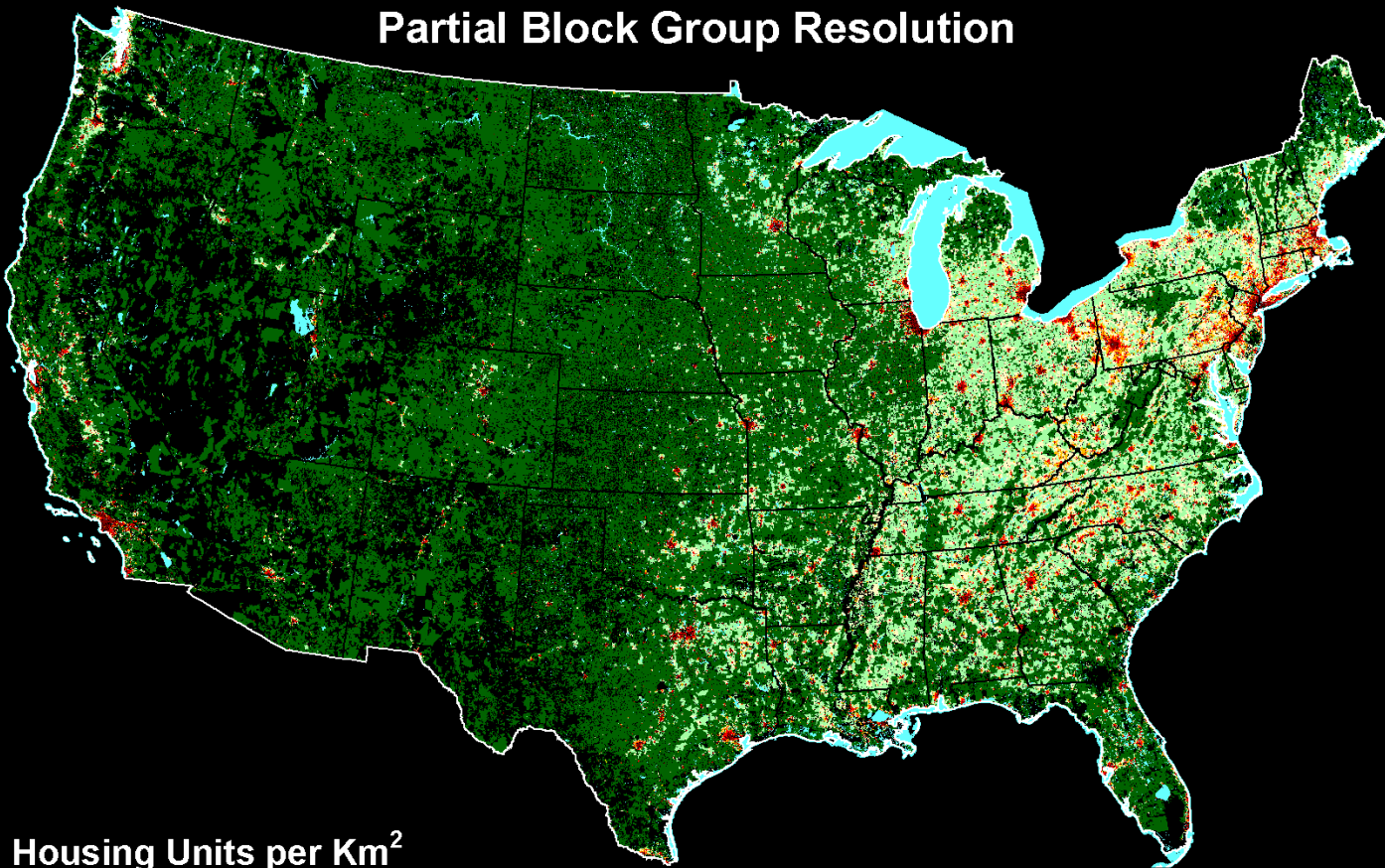
Raptors



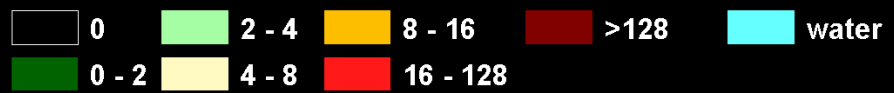
Waterfowl

# Housing Density 1940

Partial Block Group Resolution



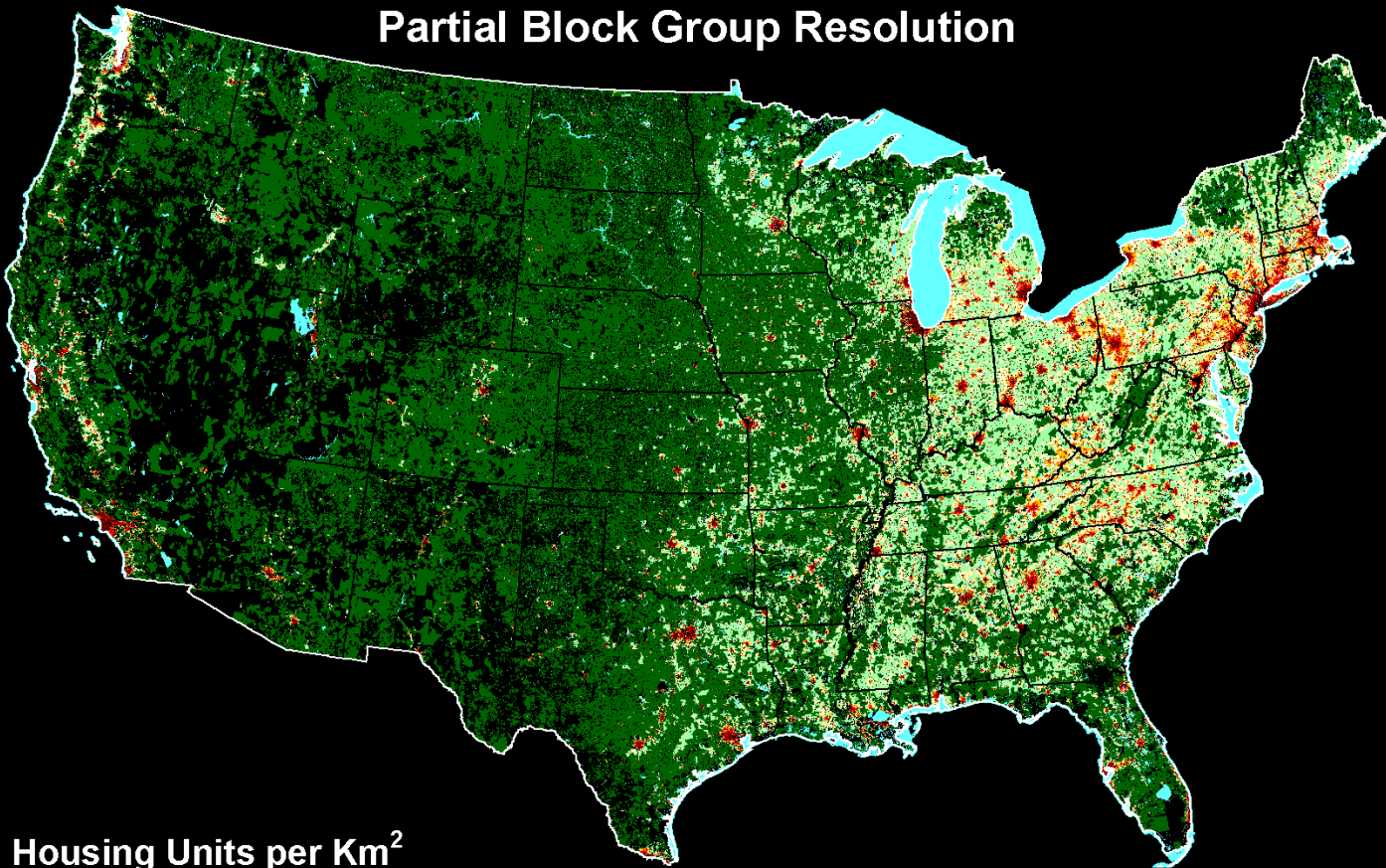
Housing Units per Km<sup>2</sup>



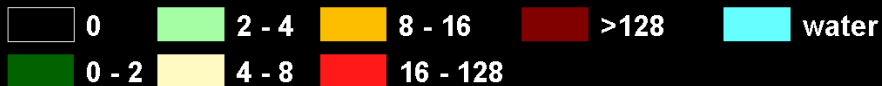


# Housing Density 1950

Partial Block Group Resolution

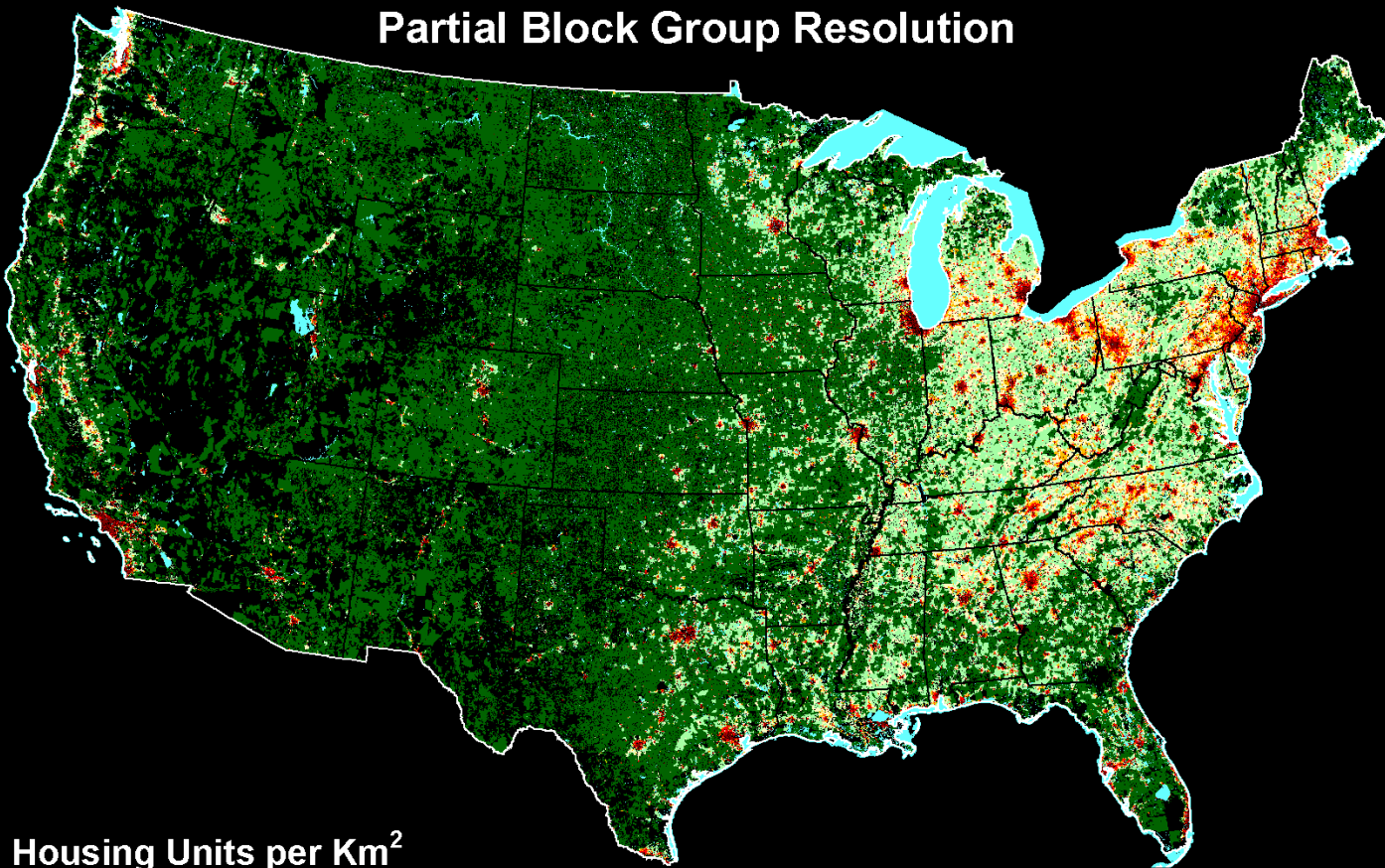


Housing Units per Km<sup>2</sup>

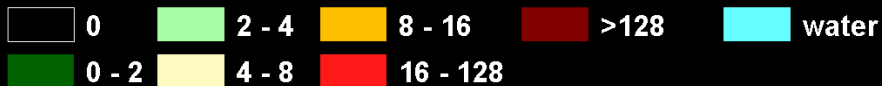


# Housing Density 1960

Partial Block Group Resolution

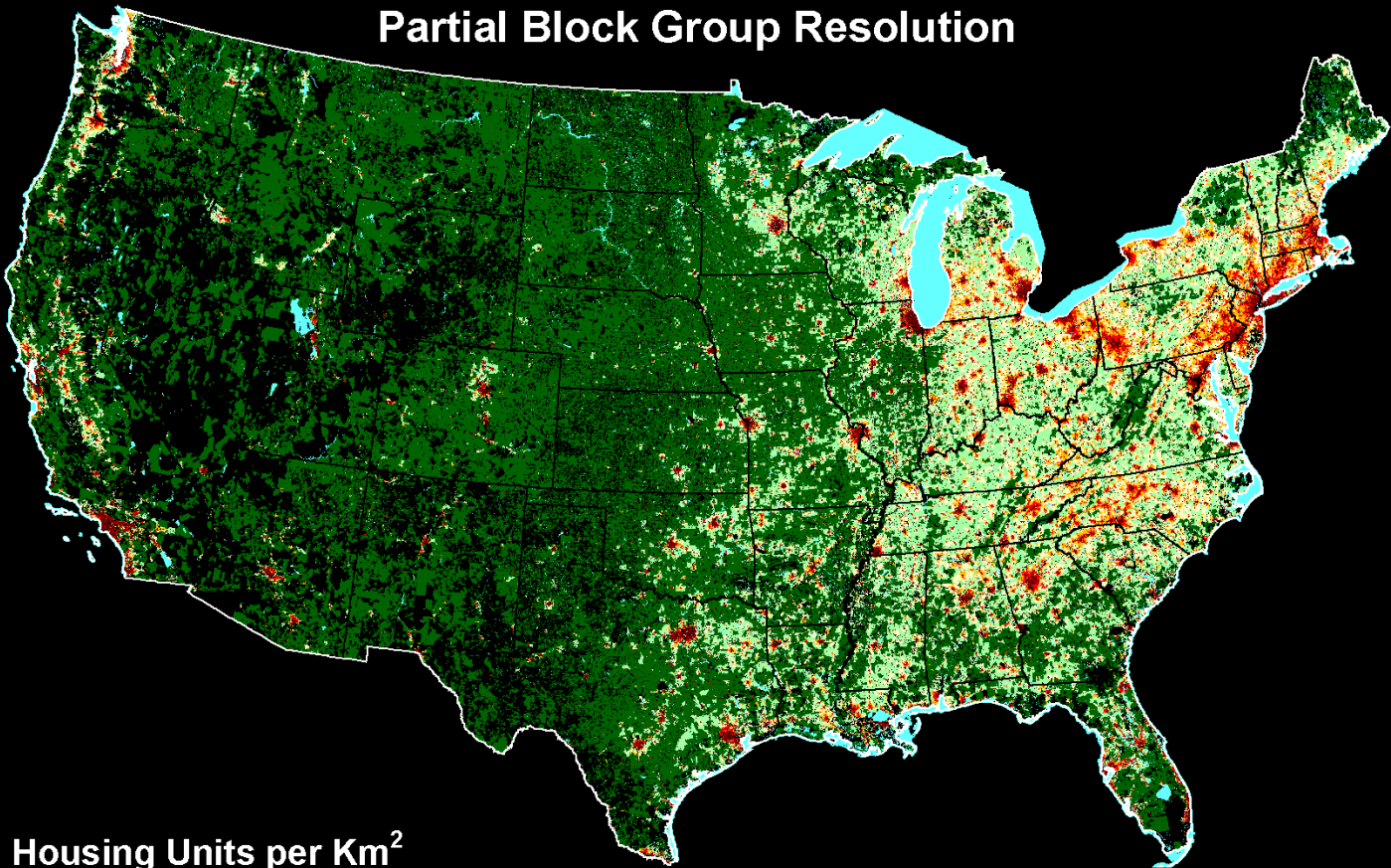


Housing Units per Km<sup>2</sup>

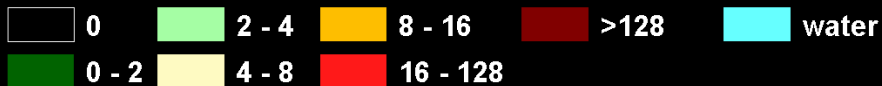


# Housing Density 1970

Partial Block Group Resolution



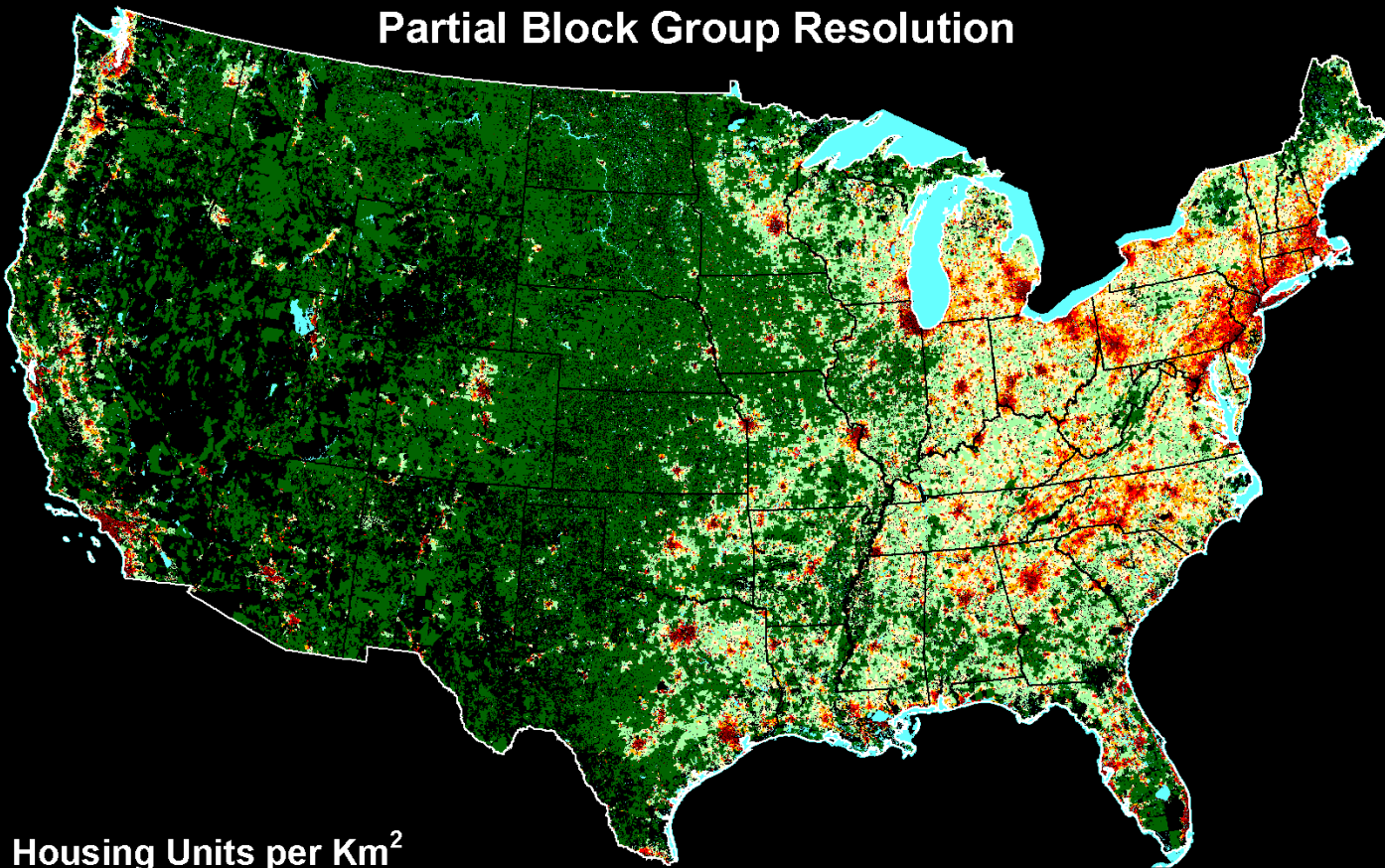
Housing Units per Km<sup>2</sup>



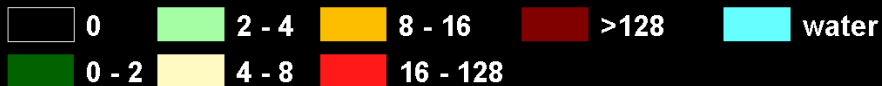


# Housing Density 1980

Partial Block Group Resolution



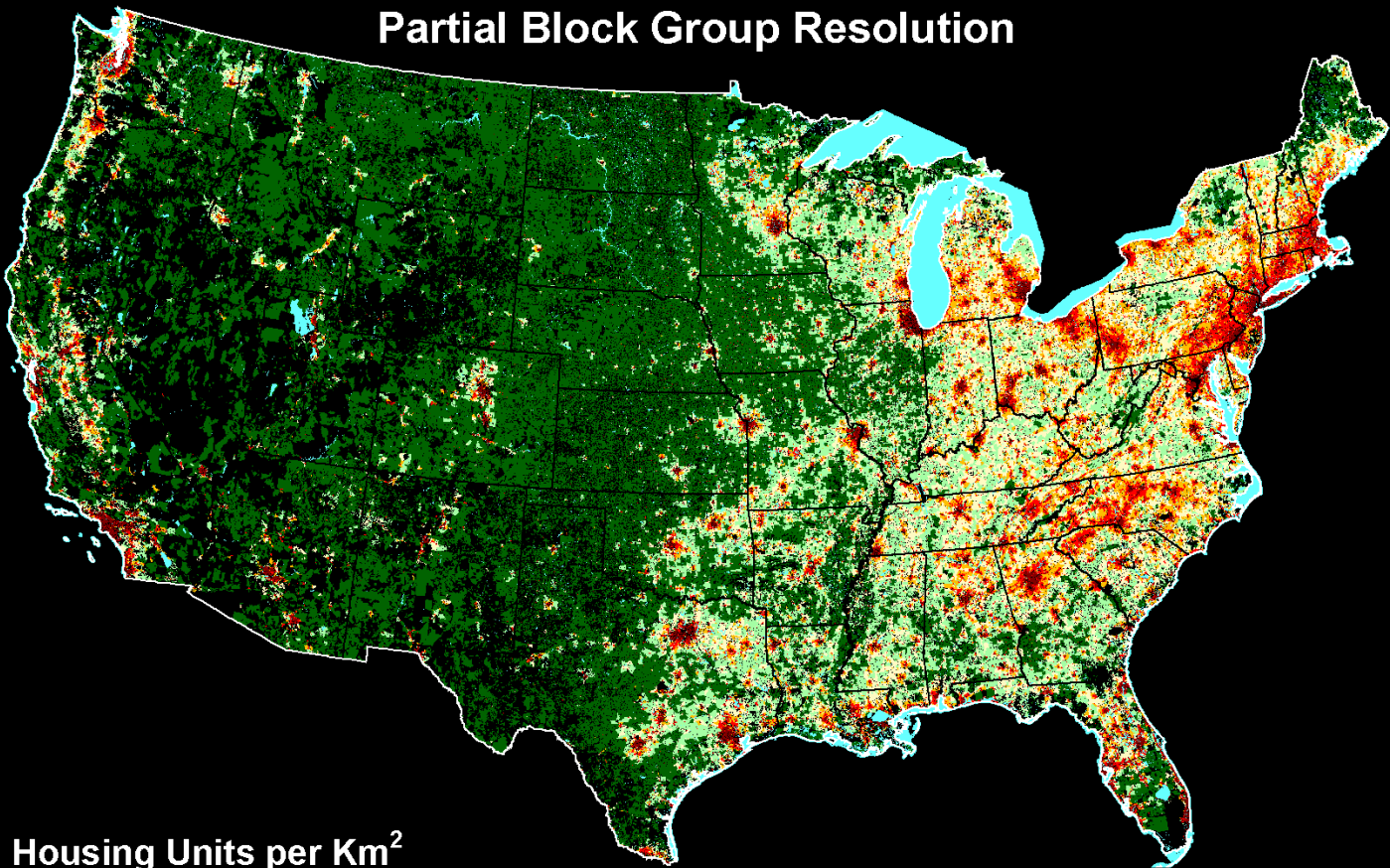
Housing Units per Km<sup>2</sup>





# Housing Density 1990

Partial Block Group Resolution

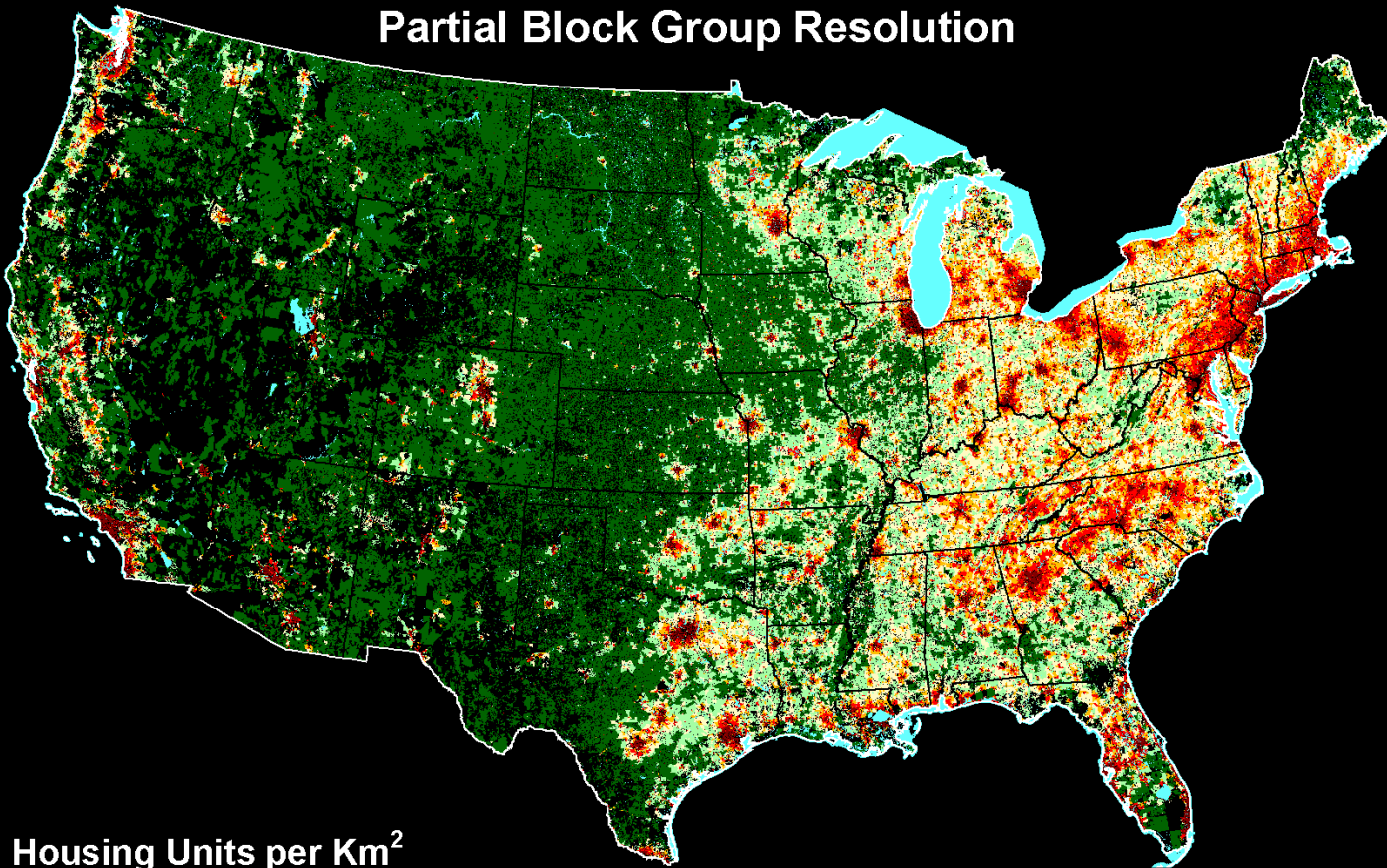


Housing Units per Km<sup>2</sup>

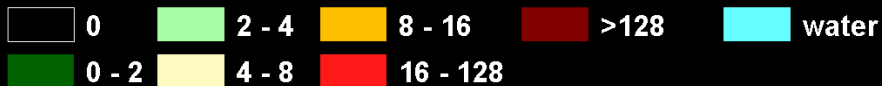


# Housing Density 2000

Partial Block Group Resolution

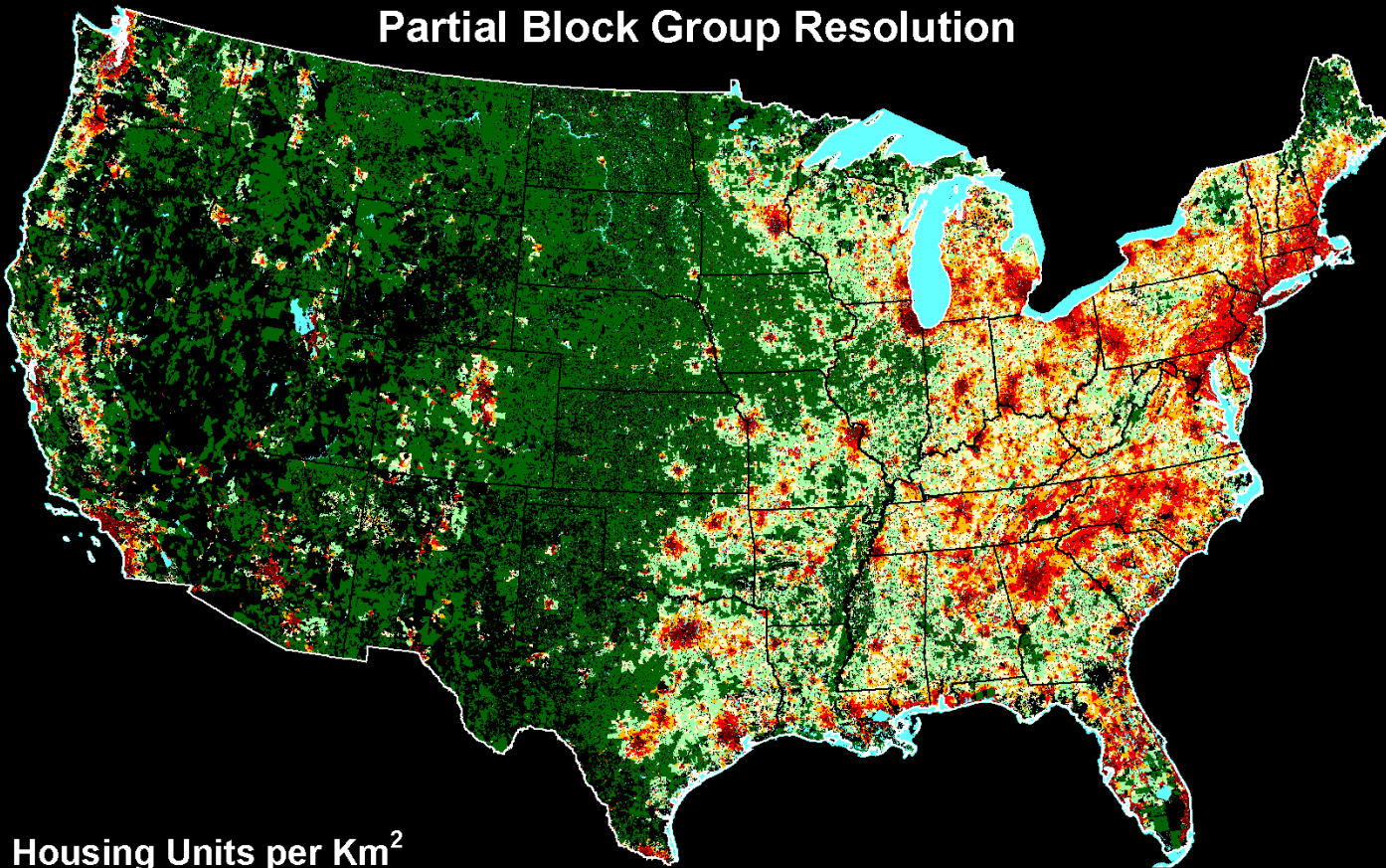


Housing Units per Km<sup>2</sup>

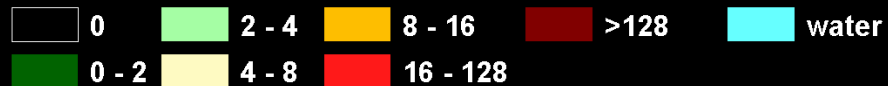


# Housing Density 2010

Partial Block Group Resolution



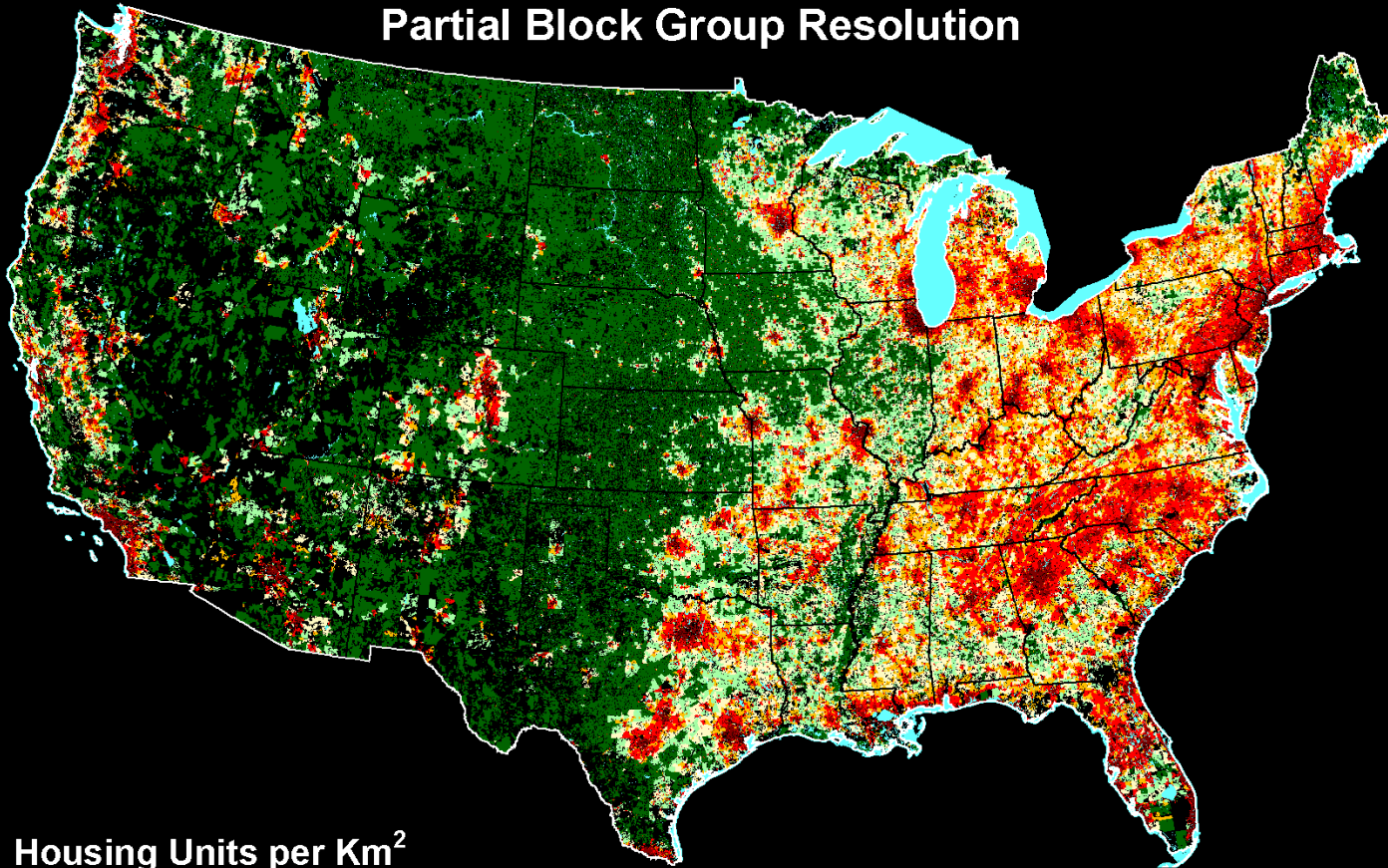
Housing Units per Km<sup>2</sup>



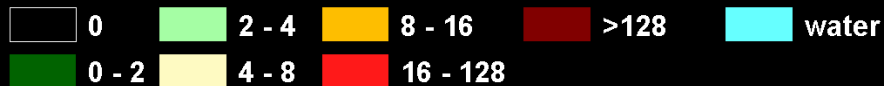


# Projected Housing Density 2030

Partial Block Group Resolution



Housing Units per Km<sup>2</sup>







## How native plants help people and nature

- Better for Birds
- Better for People
- Better for our Planet
- Save Water
- Watershed Value
- Use Fewer Chemicals
- Reduce Maintenance
- Creates Beauty



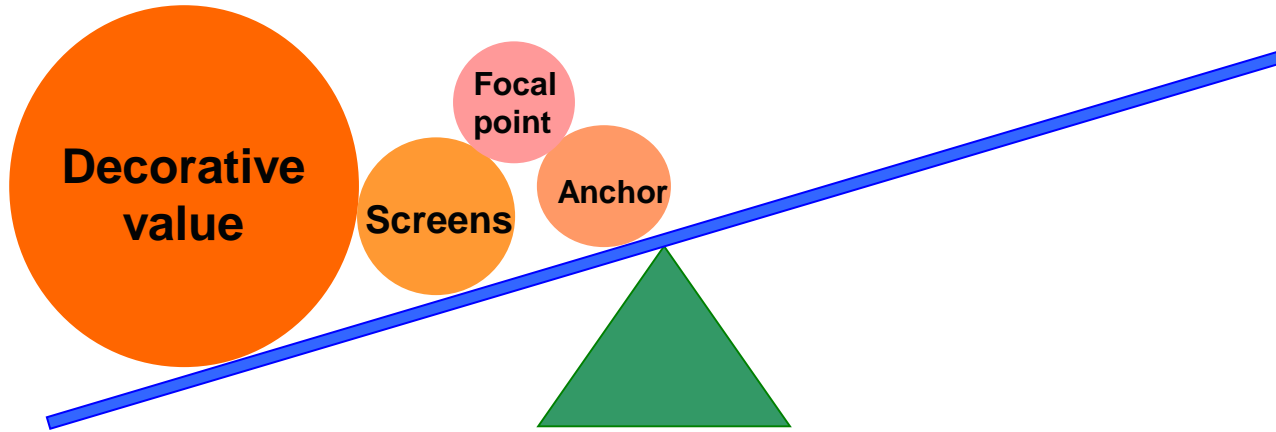




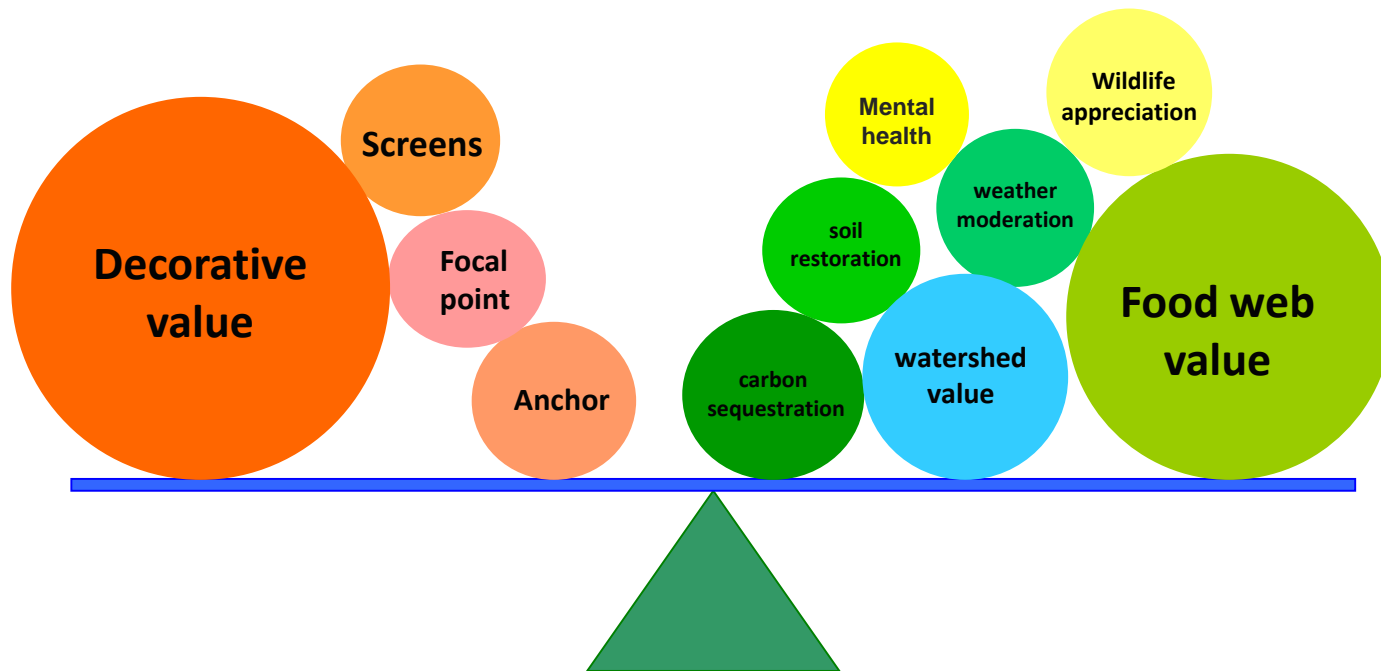
## Habitat Hero Garden

### Components of bird-friendly gardens...

- Diversity of Native Plants
- Habitat Structure
- Water Sources
- Removal of Invasive Plants
- No Chemical Fertilizers and Pesticides
- Elimination of Hazards
- Added Stewardship Components
- Community Science
- Volunteer



Past criteria for choosing plants for our  
landscapes



Future criteria for choosing plants for our landscapes





## Plants Provide Food for Birds

- **Insects**
- **Berries**
- **Nectar**
- **Seeds**
- **Nuts**

# Insects

Tell most compelling story on why native plants matter

## Specialization is Key

- **90% of the herbivorous insects can only eat the plants with which they co-evolved.**
- **A world without insects is a world without biological diversity**





**537 species of caterpillars**



**4 species of caterpillars**







## Best Plants for Caterpillars



### Shrubs

- Sandcherry
- Snowberry
- Red Elder
- Serviceberry
- Wood's Rose

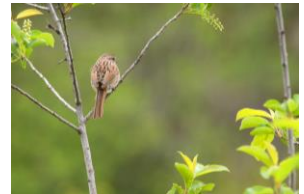
### Trees

- Hawthorn
- Plums
- Ash-leaf Maple
- Lodgepole Pine
- Ponderosa Pine
- Rocky Mountain Juniper

## Birds Need Insects!

96% of terrestrial birds feed their young insects

- Woodpeckers
- Finches
- Swallows
- Flycatchers
- Blackbirds
- Sparrows
- And, so many more!





# Berries

Flash and persistent fruit

## Best Plants for Berries & Fruit



### Shrubs

- **Three-leaf Sumac**
- **Golden Currant**
- **Boulder Raspberry**
- **Elderberry**
- **Snowberry**
- **Buffalo Berry**
- **Service Berry**

### Trees

- **Chokecherry**
- **Hackberry**
- **Rocky Mountain Juniper**

## Birds that Love Fruit!

- Waxwings
- Orioles
- Solitaires
- Thrushes
- Grosbeaks
- Crows





# Nectar

High-octane fuel

## Best Nectar-Producing Plants

### Early-season Blooming Perennials

- **Penstemons**
- **Nodding Onion**
- **Sulphur Flower**
- **Wallflower**
- **Pasque Flower**
- **Golden Banner**

### Mid-season Blooming Perennials

- **Milkweed**
- **Harebells**
- **Aspen Daisy**
- **Blanket Flower**
- **Bee Balm**
- **Black-eyed Susan**

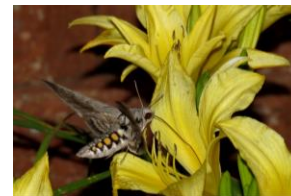
### Late-season Blooming Perennials

- **Rabbitbrush**
- **Sunflowers**
- **Gayfeather**
- **Aster**
- **Goldenrod**
- **Rocky Mtn. Bee  
Plant**

## Pollinators Need Nectar!

Not just the birds and the bees...

- **Butterflies**
- **Wasps**
- **Ants**
- **Beetles**
- **Dragon Fly**
- **Moths**
- **Bats, ... so many more!**





# Nuts and Seeds

**Protein & Winter-food Source**

## Best Plants for Nuts & Seeds

### Grasses

- **Big Bluestem**
- **Blue Grama**
- **Switchgrass**
- **Indian Wheat Grass**
- **Prairie Cord Grass**

### Perennials

- **Coneflowers**
- **Mexican Hats**

### Trees

- **Hawthorn**
- **Pine (Lodgepole/  
Ponderosa)**



## Great winter-food source

- **Juncos**
- **Chickadees**
- **Finches**
- **Sparrows**
- **Grosbeaks**
- **Thrushes**





**Habitat Layers**

**Canopy**

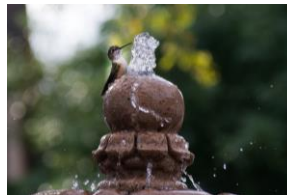
**Midstory**

**Ground Cover**



## Additional Components to Enhance Landscape

- **Water Source**
- **Shelter & Nest Sites**
- **Brush Pile**
- **Leaf Litter**
- **Snags**
- **Bird & Pollinator Houses**
- **Feeders**





## Get Involved

### Learn

- Events & Resources

### Certify

- Provides recognition for your work and inspires other gardeners

### Volunteer

- Help us grow the native plant movement – planting, tabling, garden tours, word of mouth...

## Additional Questions, Reach Out...

Jamie Weiss,  
Habitat Hero Coordinator

 [jweiss@audubon.org](mailto:jweiss@audubon.org)

704.491.9125

 [www.rockies.audubon.org](http://www.rockies.audubon.org)







Thank you!