

- Please be sure to sign in at back of room
- Restrooms located in the lobby west of the floating wall
- Emergency exits located at the northwest exit and west entrance

Rawhide Energy Station and Wind Farm Tour

June 20, 8:30 a.m.-2:30 p.m.

Meet at Platte River Power Authority's north parking lot, 2001 Danfield Court ([map](#))

Free parking, bus charter and lunch included. MUST [RSVP](#) 7 days in advance; max 50 participants.

Learn how electricity is generated with a tour of Platte River Power Authority's Rawhide Energy Station and the Silver Sage Windpower Project. Platte River is the local wholesale electric provider owned by Estes Park, Fort Collins, Longmont and Loveland. Silver Sage is located 12 miles west of Cheyenne, Wyoming, and provides 12 megawatts of wind energy to Platte River's generation portfolio.

Selling Energy Efficiency

July 18, 8:30-10 a.m.

222 Laporte Ave.

Colorado River Community Room

Discover new tips and tricks for selling energy efficient upgrades on retrofits and new construction. Sales tools and techniques gathered across several utility energy efficiency programs will help you gain an edge and better serve your customers.

Lessons from the field: Multifamily Building Air Tightness

5/16/2017

Gary Schroeder, Kim DeVoe & Brad Smith

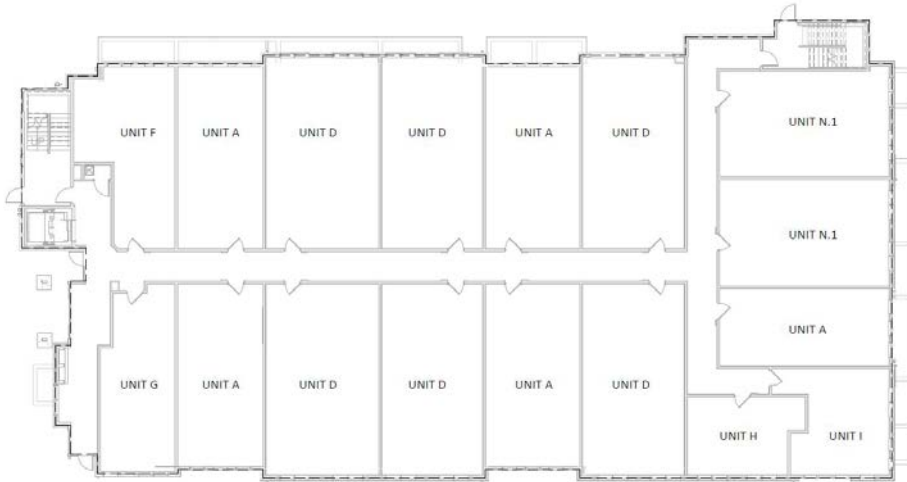
“Houses do NOT need to breathe. People do.” *Allison Bailes – Energy Vanguard*

Many people still have the mistaken impression that air leakage is good for health. But when they say that "Yeah, sealing is good, but you don't want to make it too tight," what they are really saying is, “Don't forget about air quality.” *Sean Maxwell – Contributor - Green Building Advisor*

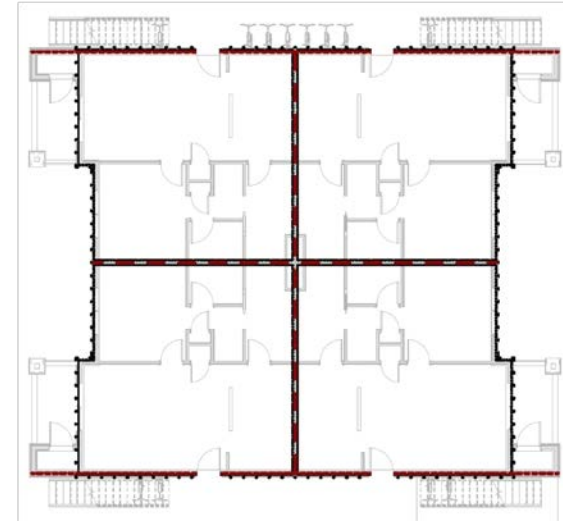
Previous Multifamily Testing 2009 I-Codes

- **Commercial Multifamily - 4 stories and above**
 - Whole building was treated as a single zone
 - 0.25 CFM75/Sq Ft of exterior envelope area
- **Residential Multifamily - buildings less than 4 stories**
 - Non-electric heat: 4.0 ACH50
 - Electric heat: 3.0 ACH50

How did we get to this new test metric



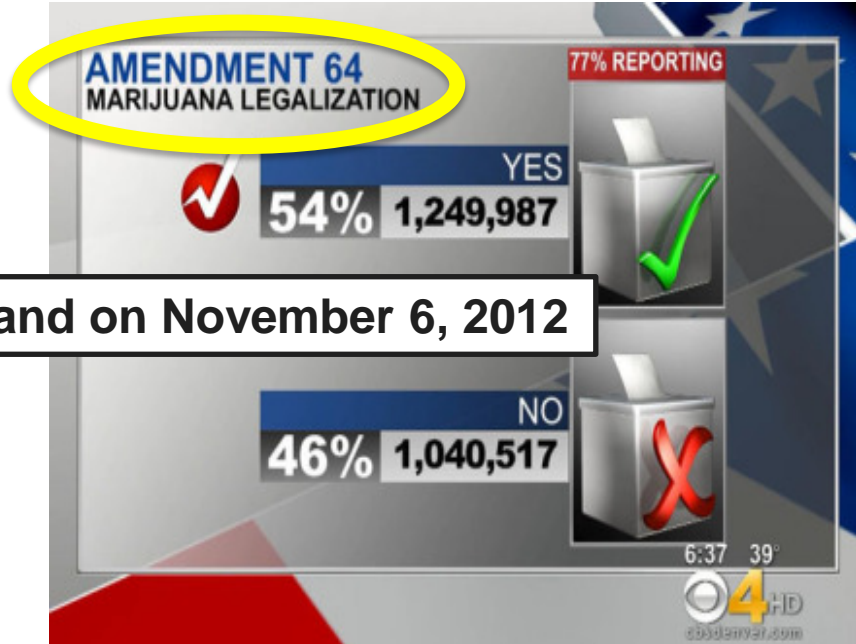
VS



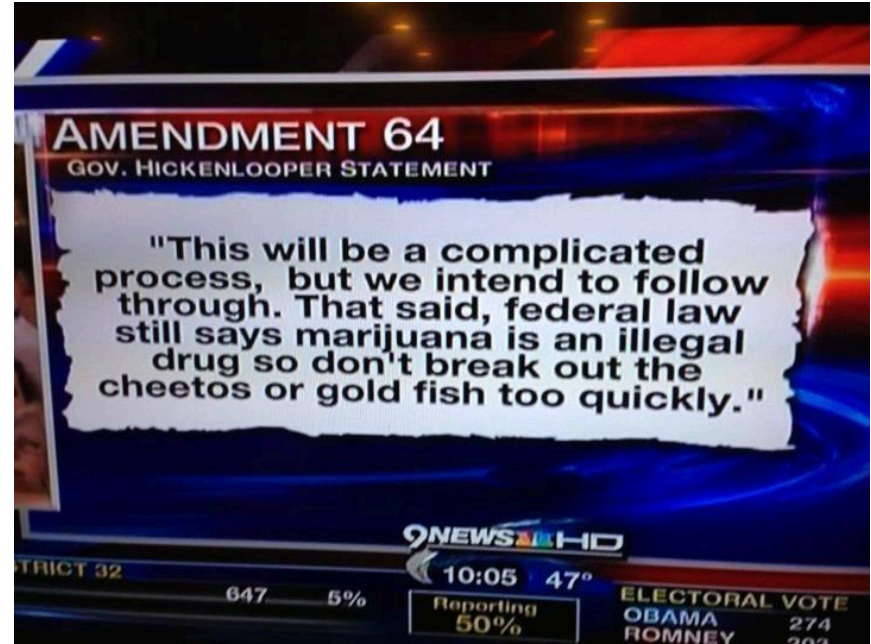
Previously testing whole building envelope.

- How to test the building envelope with adjoining units that have entry doors on exterior.

Then Colorado votes...



and on November 6, 2012



City Council takes action to address pollutants.

Directs Chief Building Official to... minimize uncontrolled pathways for smoke and other indoor pollutants to transfer between units. **Walls, ceilings and floors that separate each apartment from neighboring apartments, corridors, common spaces, trash chutes, utility chases, floors above and below, stairwells and elevator shafts must be air sealed by sealing all penetrations in walls, ceilings, floors and chases. Weather-strip all doors that lead to common hallways.**

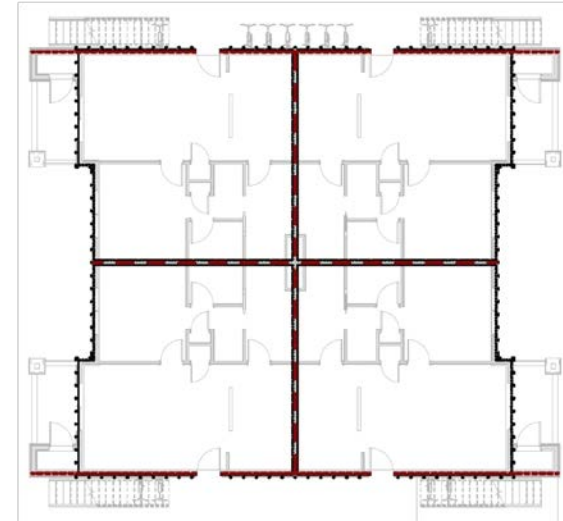


Dirty insulation is an indication of air leakage. In this case the insulation is acting like an air filter.

The primary goal of air sealing party walls is not so much energy reduction as much as it is improving indoor air quality by limiting the transfer of smoke or pollutants from one unit to another.

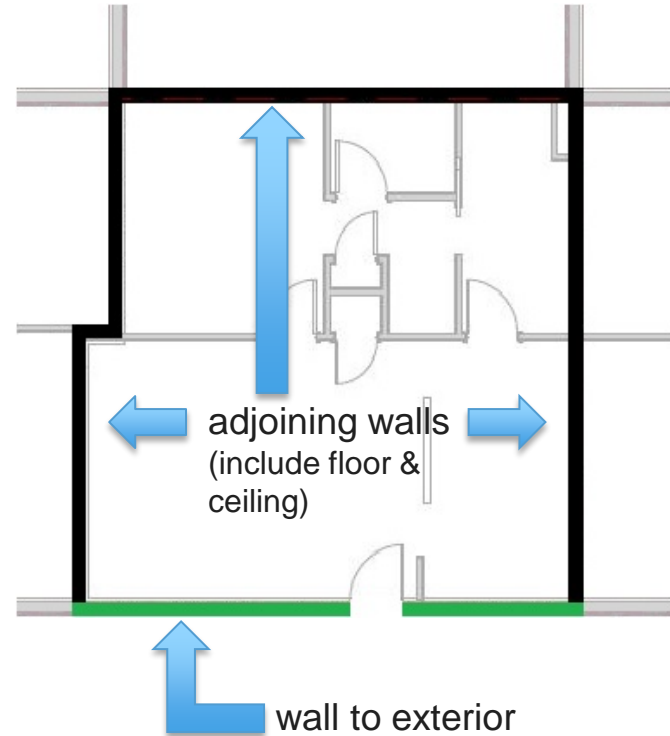
- Compartmentalization is the best way to limit transfer of smoke or pollutants.
- Test by unit instead of the entire building
- Amendment to code to define air barrier around each unit on plans.
- New air leakage metric created for MF stacked units:

.30 CFM50/ sq ft surface area adopted



Why choose a different metric for stacked MF

- Senior Plan Reviewers, Testers and Builders mention difficulty hitting 3 ACH50.
- Typical Stacked MF units have less area thus much less volume than attached MF.
- Volume based tightness metrics can be hard to meet in small units.
- Stacked metric uses unit enclosure surface area including wall to exterior.

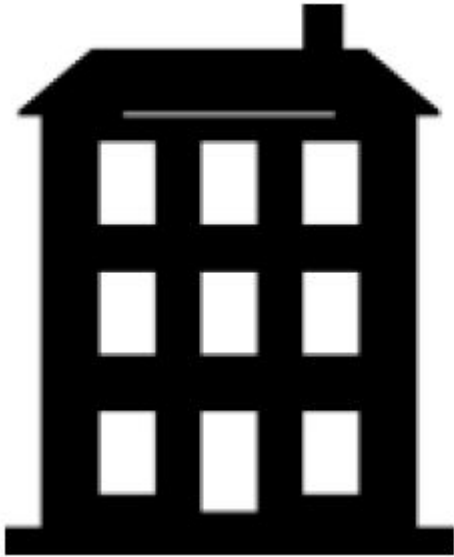


- **LEED sampling considered**
- **Not used due to complexity, number of units to be tested & cost**

We developed our own

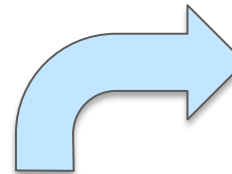
Unit Sampling

- Min 20% of units in each building to test, including at least one of each type & approximately an equal number on each floor level.
- Each must pass without failure. If failure occurs, diagnose, correct & re-test until passing. Test two additional units of this type to passing.



Multifamily - Stacked units (low-rise and high-rise)







Stacked apartments or condos (to include high-rise projects built under the International Building Code – IBC R2 & R3).









Also included are multifamily units above street level retail.



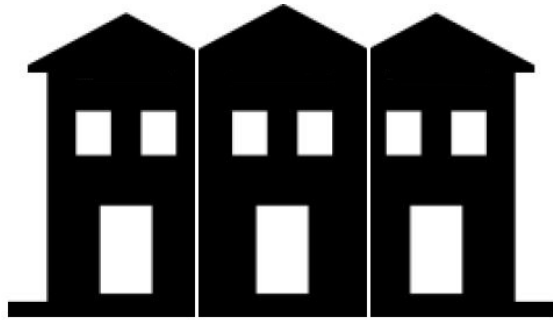
Airtightness Testing Required for Different Building Types: City of Fort Collins Building Code

New Construction Building Types	Single Family Detached 	Single Family Attached 	Multi-family – stacked units (low-rise and high-rise) 	Small Commercial (≤5,000 sf) 	Large Commercial (>5,000 sf) 	Commercial / Residential Mixed Use 
Examples	Houses that are free of any shared walls and stand alone	Duplex, triplex, town-homes, row-houses. Each unit has its own foundation and roof (including IBC R2, R3)	Stacked apartments or condos (to include high-rise projects built under the IBC)	Small office buildings, offices adjacent to unconditioned space	Large multi-story office buildings, large multi-use buildings	Retail on street level, MF stacked units above
Test Required	Residential Air Tightness Test	Residential Air Tightness Test	Multifamily Unit Air Tightness Test	Small Commercial Building Air Barrier Test	Large Commercial Building Air Leakage Test	Large or Small Commercial Building Air Leakage Test & MF Unit Air Tightness Test
Compliance Metric (Leakage not to exceed)	3 ACH50	3 ACH50	0.30 CFM50/SF unit enclosure surface area (SA)	0.25 CFM50/SF unit enclosure surface area (SA)	0.25 CFM75/SF building envelope surface area (SA)	0.25 CFM50/SF SA for small commercial. 0.25 CFM75/SF for large commercial. 0.30 CFM50/sf for MF units above

Airtightness Testing Required for Different Building Types: City of Fort Collins Building Code

New Construction Building Types	Single Family Detached 	Single Family Attached 	Multi-family – stacked units (low-rise and high-rise) 	Small Commercial (≤5,000 sf) 	Large Commercial (>5,000 sf) 	Commercial / Residential Mixed Use 
Examples	Houses that are free of any shared walls and stand alone	Duplex, triplex, town-homes, row-houses. Each unit has its own foundation and roof (including IBC R2, R3)	Stacked apartments or condos (to include high-rise projects built under the IBC)	Small office buildings, offices adjacent to unconditioned space	Large multi-story office buildings, large multi-use buildings	Retail on street level, MF stacked units above
Test Required	Residential Air Tightness Test	Residential Air Tightness Test	Multifamily Unit Air Tightness Test	Small Commercial Building Air Barrier Test	Large Commercial Building Air Leakage Test	Large or Small Commercial Building Air Leakage Test & MF Unit Air Tightness Test
Compliance Metric (Leakage not to exceed)	3 ACH50	3 ACH50	0.30 CFM50/SF unit enclosure surface area (SA)	0.25 CFM50/SF unit enclosure surface area (SA)	0.25 CFM75/SF building envelope surface area (SA)	0.25 CFM50/SF SA for small commercial. 0.25 CFM75/SF for large commercial. 0.30 CFM50/sf for MF units above

What metric is used to test these buildings?



Townhome



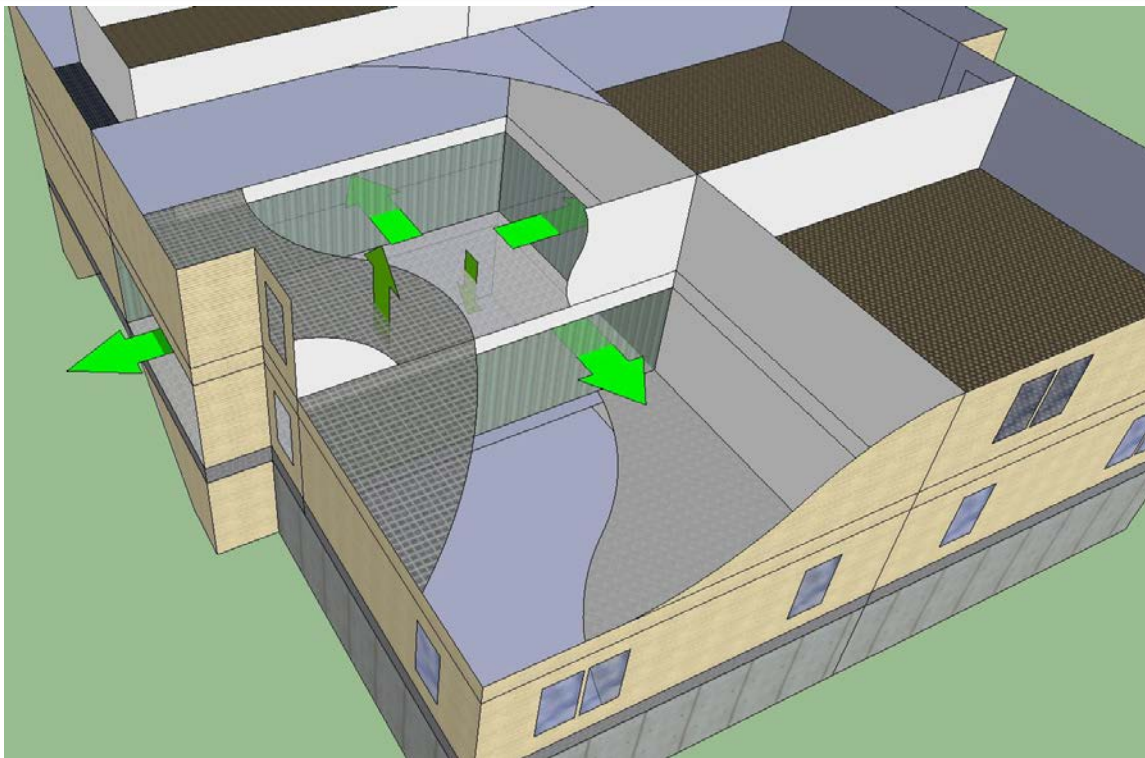
Row House

Often permitted as multifamily but are tested as single family attached.

Airtightness Testing Required for Different Building Types: City of Fort Collins Building Code

New Construction Building Types	Single Family Detached	Single Family Attached	Multi-family – stacked units (low-rise and high-rise)	Small Commercial (≤5,000 sf)	Large Commercial (>5,000 sf)	Commercial / Residential Mixed Use
Examples	Houses that are free of any shared walls and stand alone	Duplex, triplex, town-homes, row-houses. Each unit has its own foundation and roof (including IBC R2, R3)	Stacked apartments or condos (to include high-rise projects built under the IBC)	Small office buildings, offices adjacent to unconditioned space	Large multi-story office buildings, large multi-use buildings	Retail on street level, MF stacked units above
Test Required	Residential Air Tightness Test	Residential Air Tightness Test not	Multifamily Unit Air Tightness Test	Small Commercial Building Air Barrier Test	Large Commercial Building Air Leakage Test	Large or Small Commercial Building Air Leakage Test & MF Unit Air Tightness Test
Compliance Metric (Leakage not to exceed)	3 ACH50	3 ACH50 not	0.30 CFM50/SF unit enclosure surface area (SA)	0.25 CFM50/SF unit enclosure surface area (SA)	0.25 CFM75/SF building envelope surface area (SA)	0.25 CFM50/SF SA for small commercial. 0.25 CFM75/SF for large commercial. 0.30 CFM50/sf for MF units above

How stacked multifamily units are connected



How do we limit these connections?

Air barrier assemblies

5/16/2017



Water (liquid & vapor), Air, Thermal

- Liquid water: *drainage plane, water-resistive barrier (WRB)*
- Vapor: *vapor barrier, vapor retarder*
- Air: *air barrier*
- Thermal: *insulation*

Materials

- ≤ 0.004 cfm/ft² at 75 Pa

Assemblies

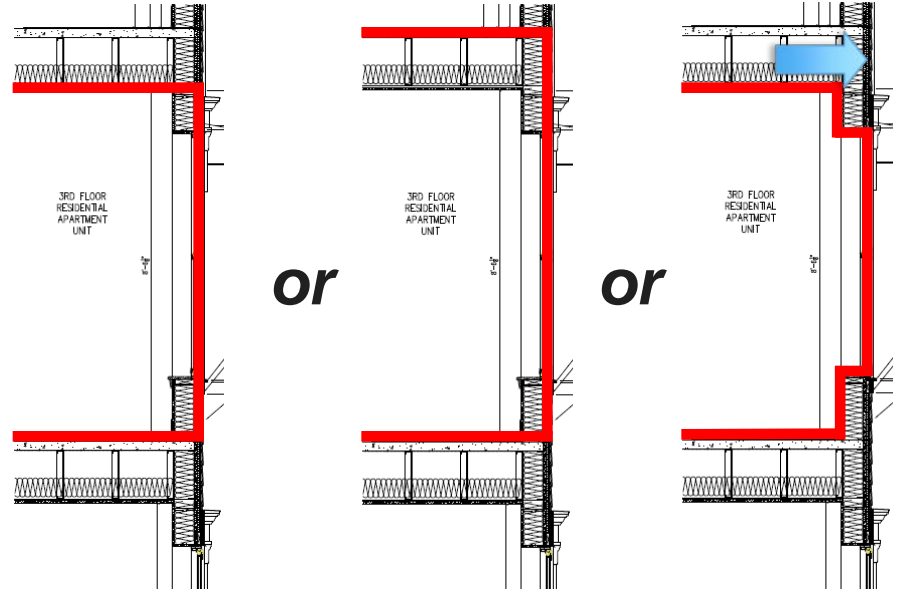
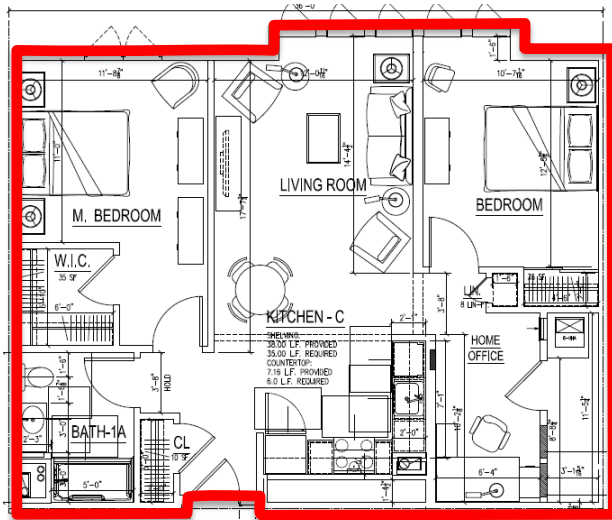
- ≤ 0.04 cfm/ft² at 75 Pa

What kind of layer is it?

Material	WRB	Vapor Barrier	Air Barrier	Insulation
Building Wrap	✓	✗	✓	✗
Building Paper	✓	✗	✗	✗
Drywall (painted)	✗	✗	✓	✗
OSB	✗	✗	✓	✗
Polyethylene Sheet	?	✓	?	✗
Fluid Applied Membrane	✓	?	✓	✗
Fiberglass Ins., Mineral Wool	✗	✗	✗	✓
Open Cell Foam	✗	✗	?	✓
Closed Cell Foam	✓	✓	✓	✓

- **What is the intended AB?**
 - **Material(s)**
 - **Identify plane of air tightness**
 - **Connection of materials**
- **How is AB detailed on plans?**
 - **Third party review recommended**
- **How/where does AB fit into construction sequence?**
- **Who is responsible for the primary AB? Scope of work.**

- Clear understanding of plane of air tightness.



Images courtesy Brian Christensen - NORESCO



Examples from the field

5/16/2017

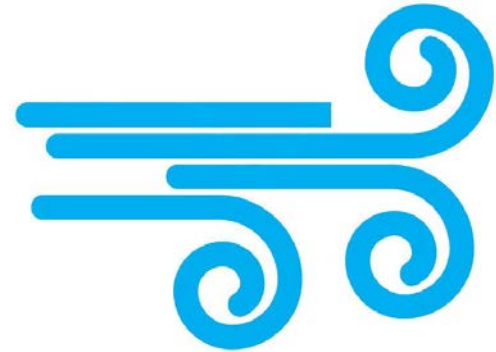
Walls pulling triple duty



UL Fire resistance
rating

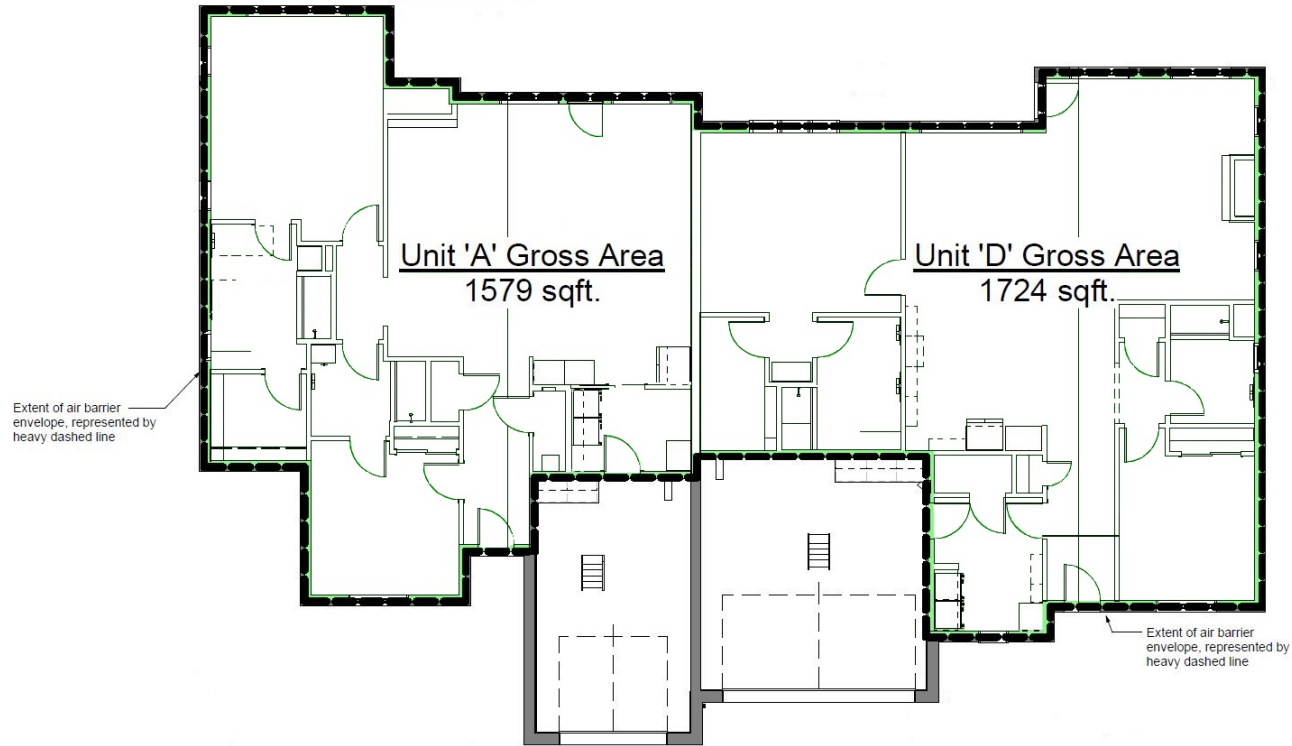


STC sound transmission
class rating

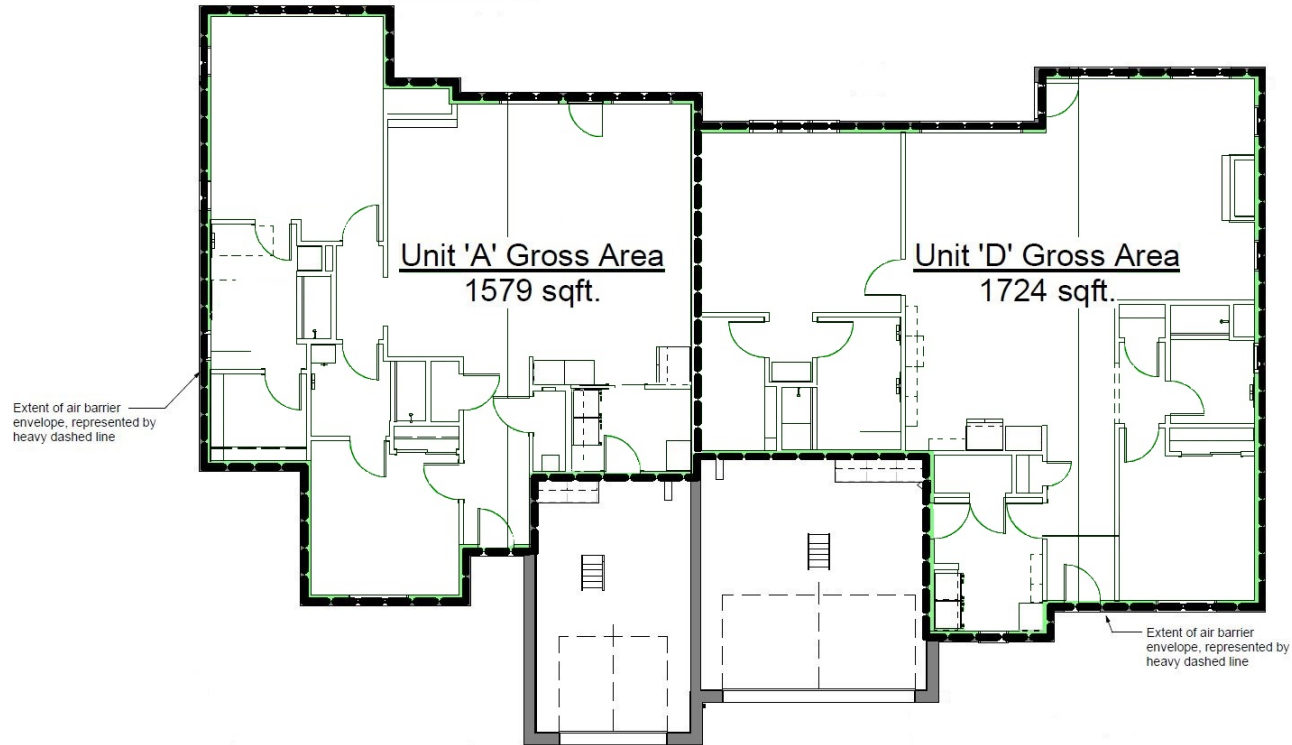


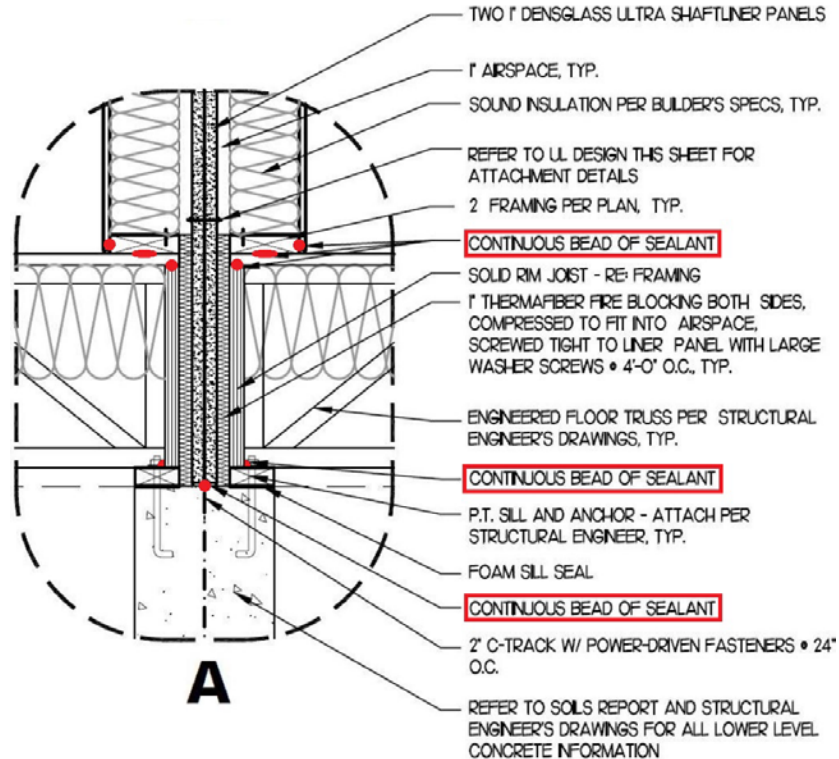
Air tightness

Define air barrier on plans

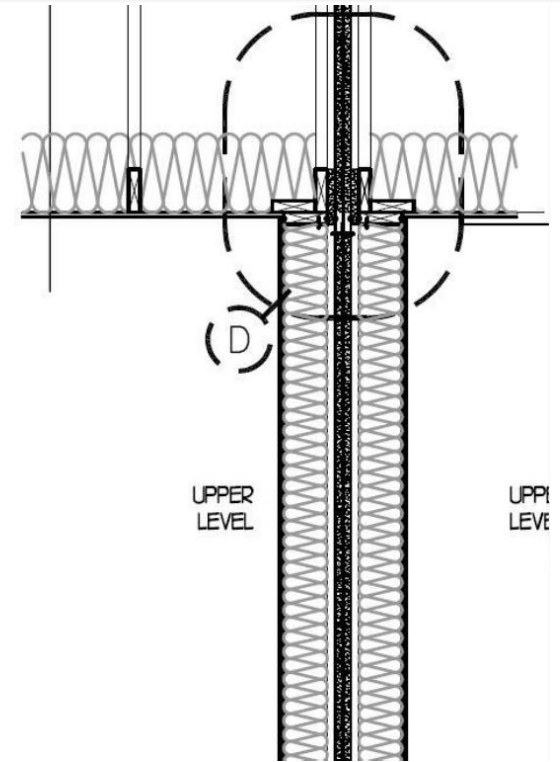
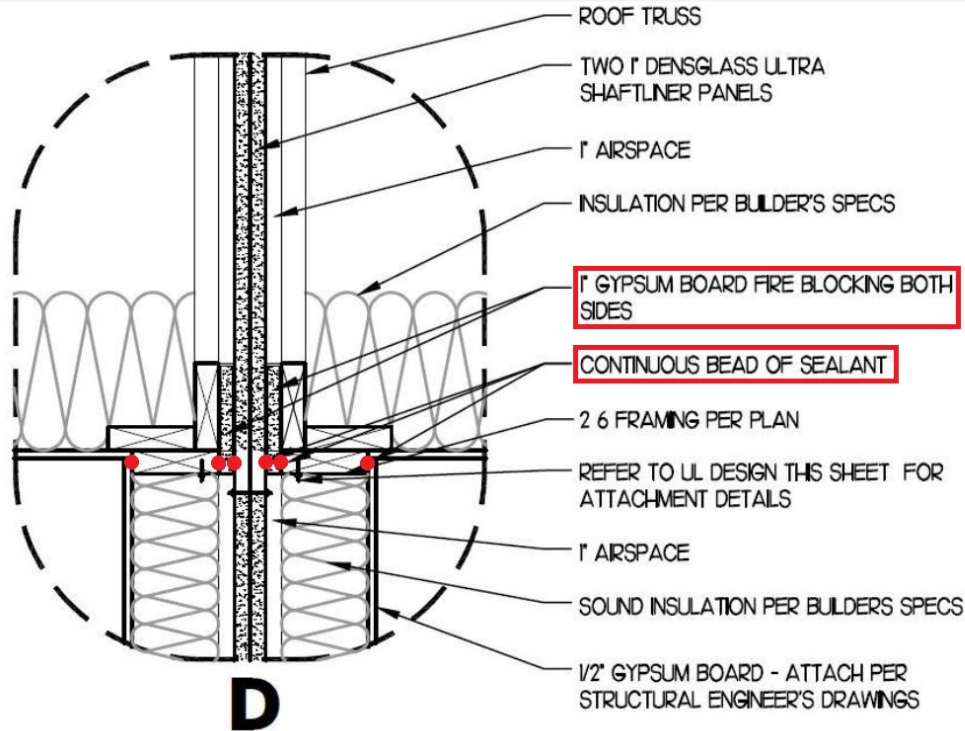


Define air barrier on plans





Two hour wall assembly - Shaftliner



Two hour wall assembly



Large gap is left to air seal.

**Ripper installed in gap.
Smaller gap to seal.**



Examples from the field



Looking up at top plate



Top plate from above – 6" ripper filling the gap is visible



Interior looking out to front porch.



Exterior front porch looking at porch roof.



Gap between sheathing & shaftliner allowing air behind rim.

Mind the transitions



Interior looking out to front porch.

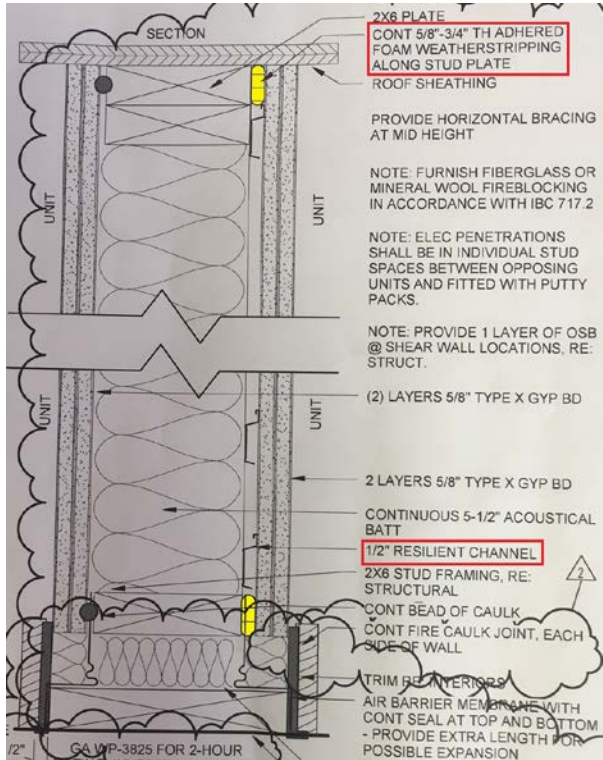


Exterior front porch looking a porch roof.

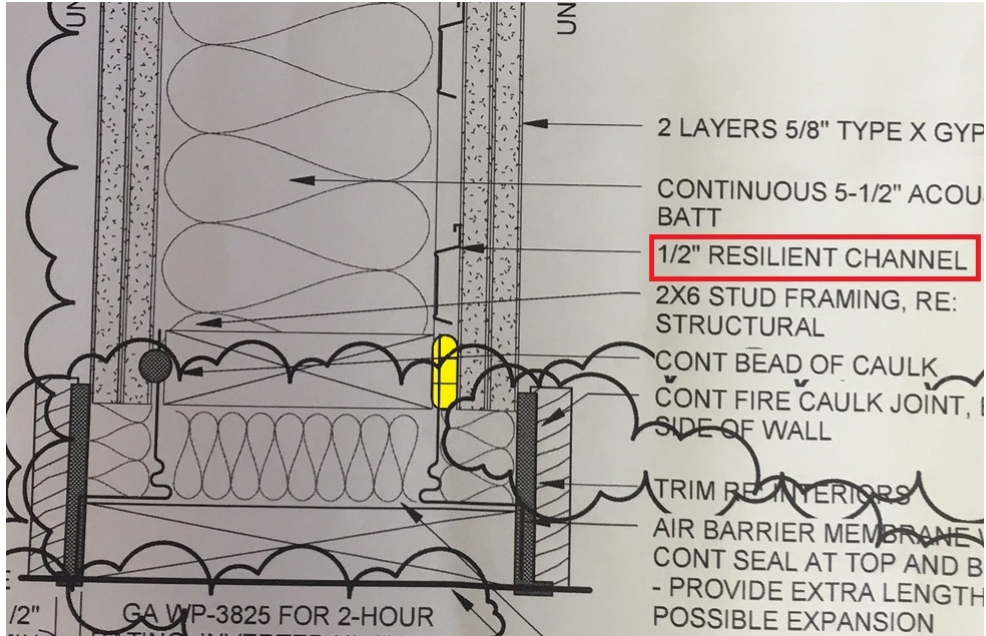


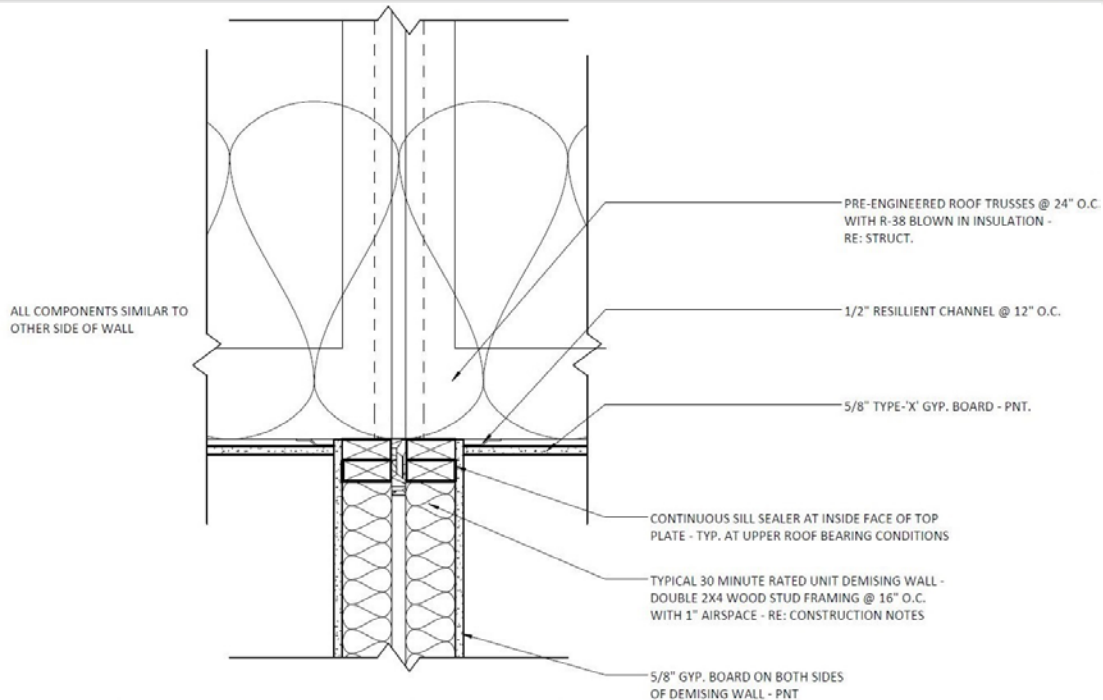
Gap between sheathing & shaft-liner allowing air behind rim.

Are plan details being followed?



Floating wall – challenging detail



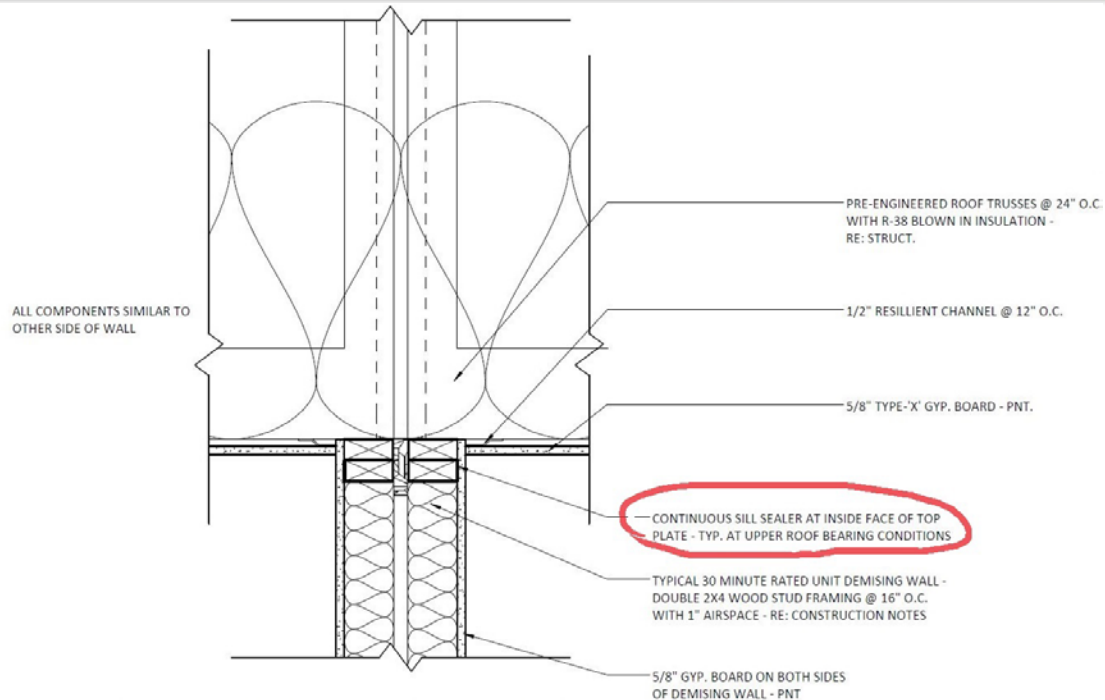


DEMISING WALL @ ROOF BEARING - TYP.

3
A7.2

SCALE: 1 1/2" = 1'-0"

One hour wall assembly - attic



DEMISING WALL @ ROOF BEARING - TYP.

3
A7.2

SCALE: 1 1/2" = 1'-0"

One hour wall assembly - attic

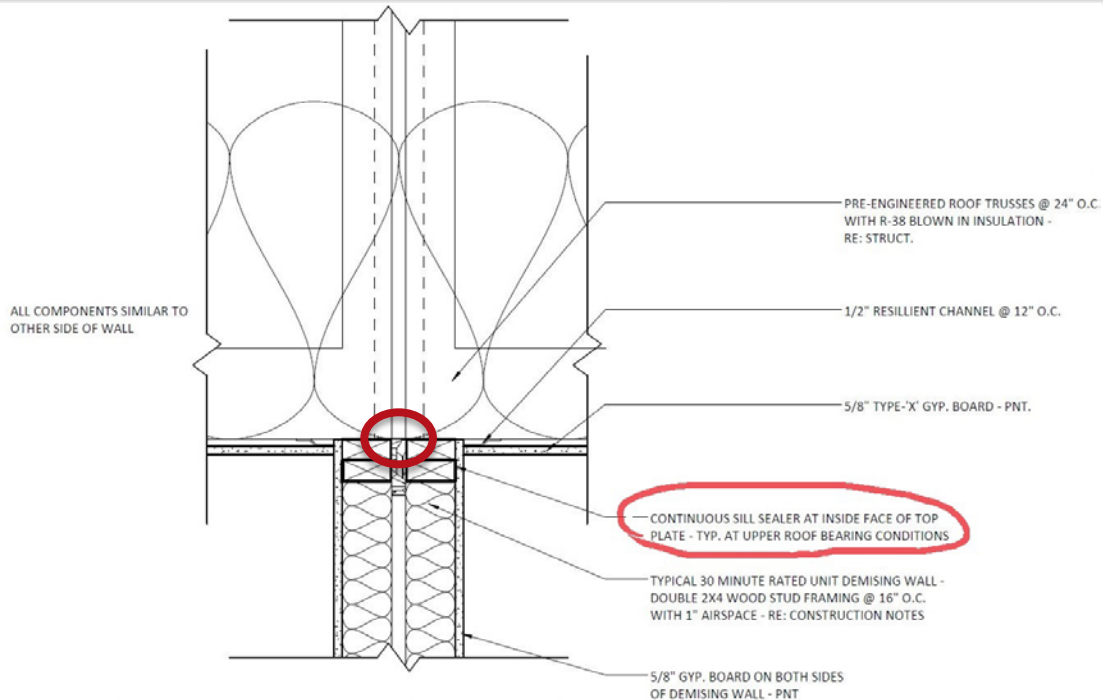


3
A7.2

DEMISING WALL @ ROOF BEARING - TYP.

SCALE: 1 1/2" = 1'-0"

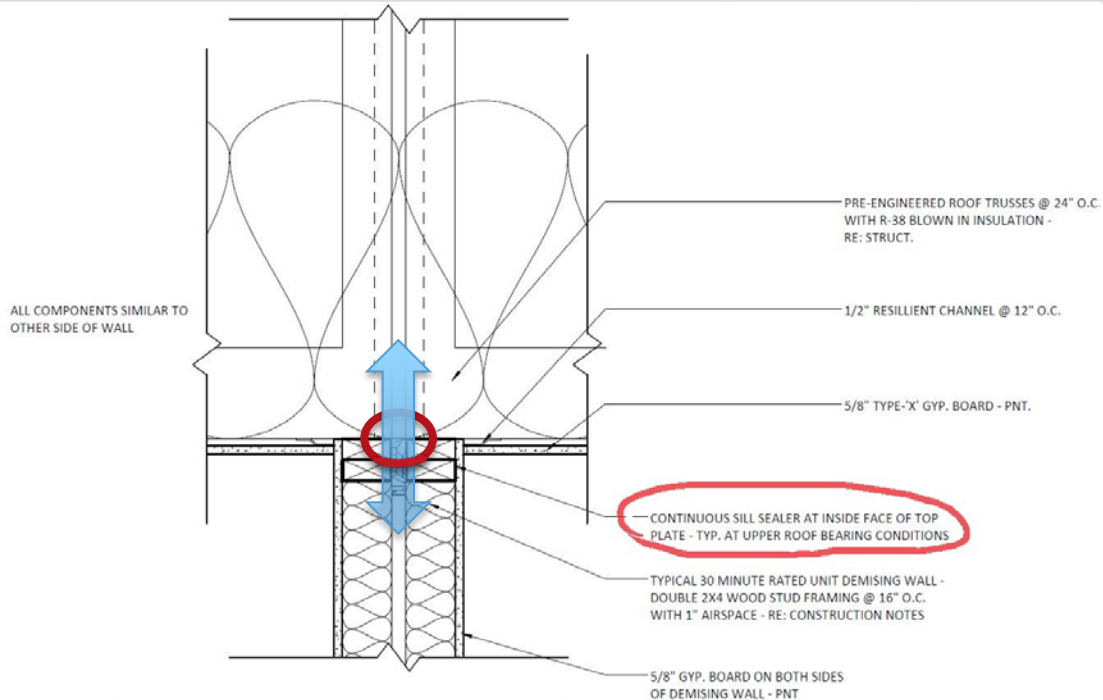
One hour wall assembly - attic



DEMISING WALL @ ROOF BEARING - TYP.

3
A7.2

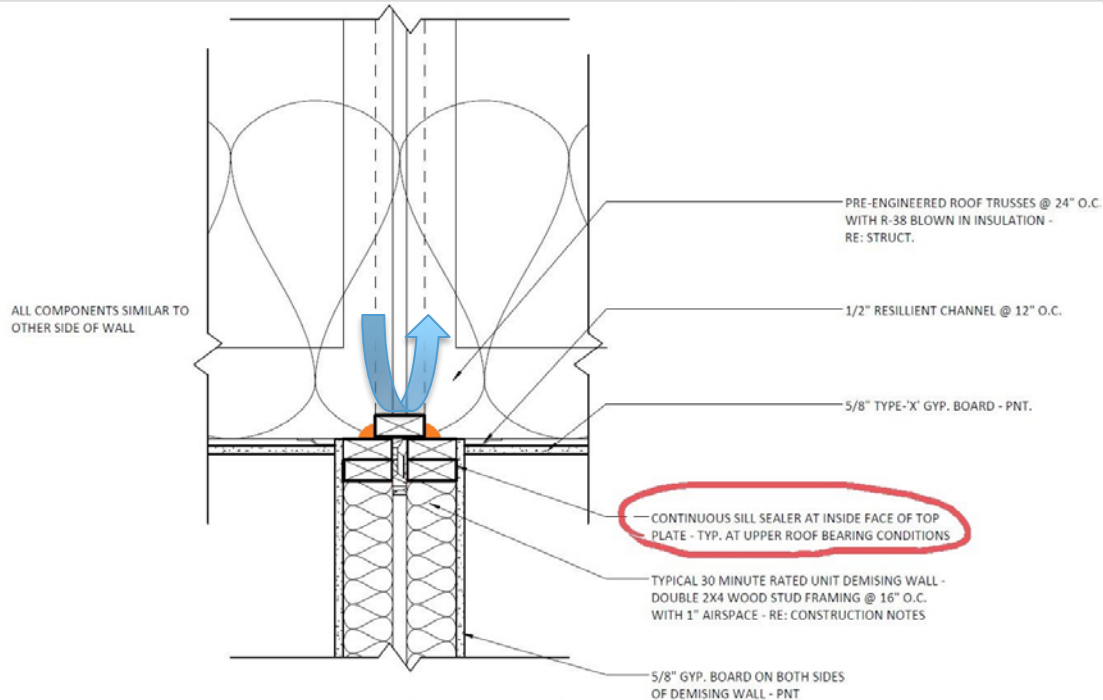
SCALE: 1 1/2" = 1'-0"



DEMISING WALL @ ROOF BEARING - TYP.

3
A7.2

SCALE: 1 1/2" = 1'-0"



DEMISING WALL @ ROOF BEARING - TYP.

3
A7.2

SCALE: 1 1/2" = 1'-0"



Looking up at top plate – gap chinked with mineral wool for draft stop.



Looking down from above. Chinking removed shows direct connection with attic.

One hour wall assembly - attic



Foam seal or blocking above chinking will minimize pathway for air into wall.

Scope of work – it's in the details



Define early in the project whose scope of work entails caulking penetrations to drywall & sealing fixtures.

Scope of work – it's in the details



QC checks are critical. Pictured right, a pathway through wall from unit to unit during construction has damaged the putty compromising fire & air seal.

Challenges & lessons learned

5/16/2017



Not all construction is the same

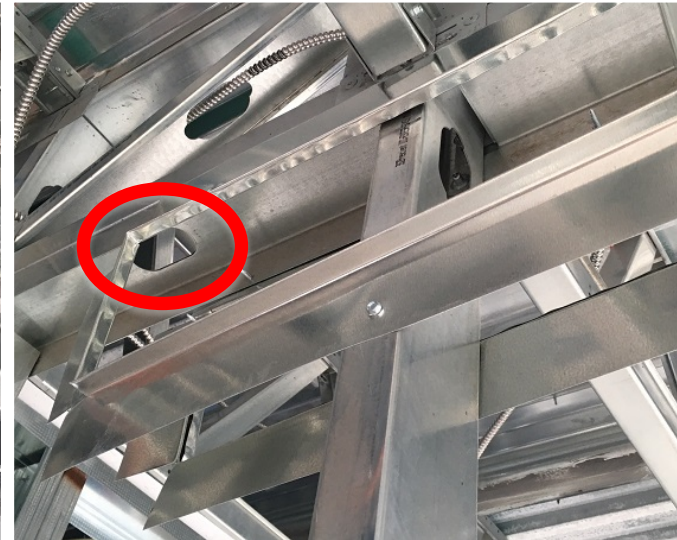
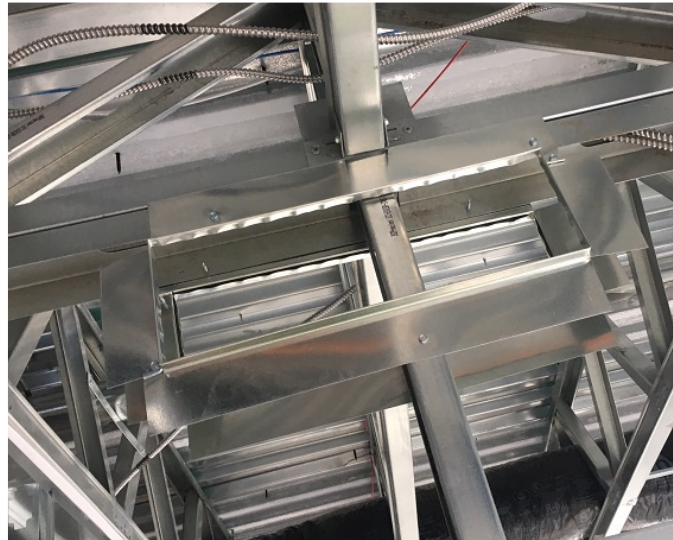


It's complicated out there

Can you spot the area of concern in pic at right?



Can you spot the area of concern in pic at right?

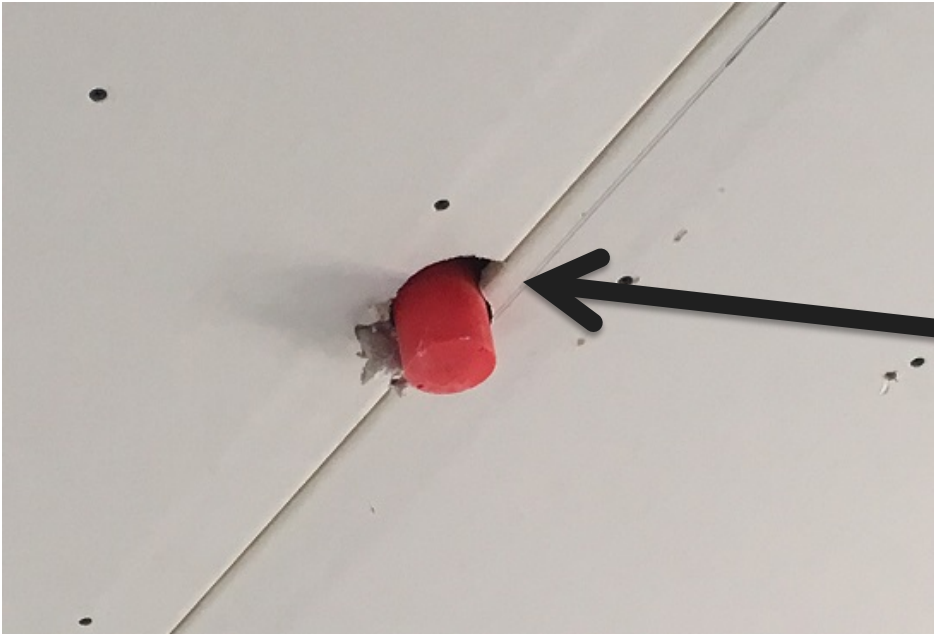


Hole in top plate at transfer grill allowed air from interstitial space above into unit(s).

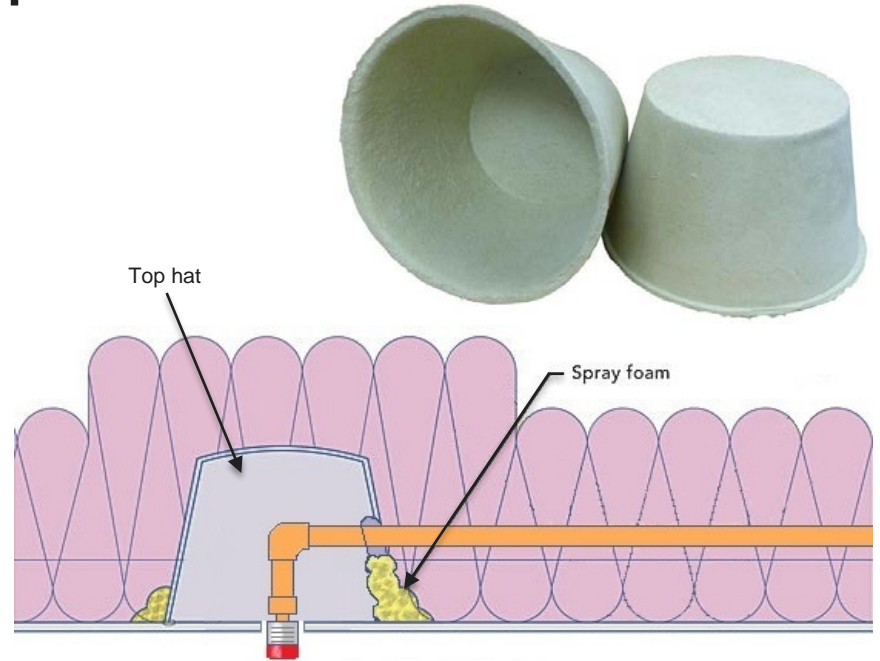
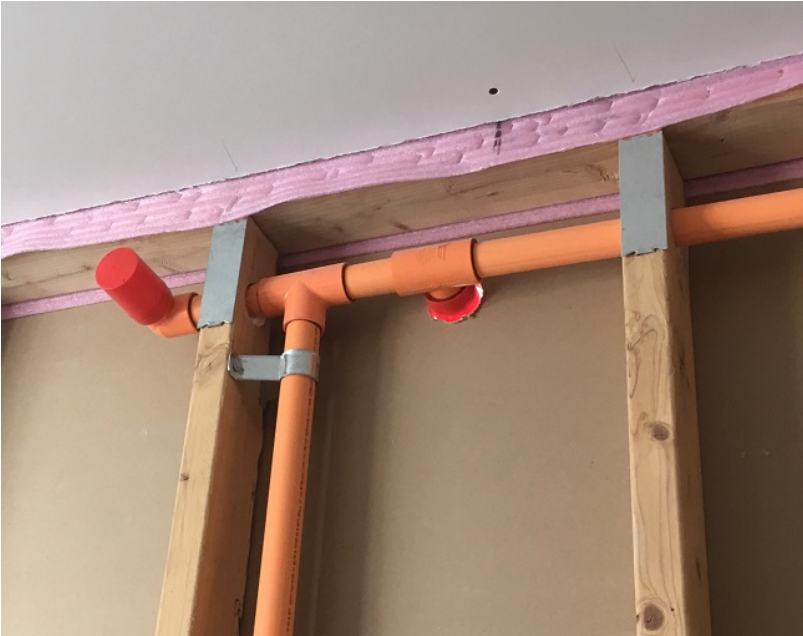
Expensive and time intensive to correct



Known holes – Fire Suppression Lines



Solutions – side wall install or top hat



- **Steps to success**

- Clearly define plane of air tightness/air barrier on plans.
- Recommend hiring 3rd party air leakage tester early.
 - Plan review
 - Pre-drywall air barrier inspections
 - Air leakage test
- Work with the insulation & air sealing contractor & define scope.
- Identify problems early in the process. Easier & less costly to repair.
- Pre blower door tests are very informative. *best done on 1st building.

Building America Solution Center

EERE » BTQ » Building America » Solution Center » Guides

[Solution Center Home](#)

[Help](#)

FIND YOUR TOPIC BY:

[Building Components](#)

[Guides A-Z](#)

[ENERGY STAR Certified Homes](#)

[Zero Energy Ready Home](#)

[EPA Indoor airPLUS](#)

FIND RESOURCES:

[Sales Tool](#)

[CAD Files](#)

[Image Gallery](#)

[Case Studies](#)

[Videos](#)

[Optimized Climate Solutions](#)

[Code Briefs](#)

FIND PUBLICATIONS:

[Library](#)

Air Sealing Multifamily Party Walls

[Print this page](#) [PDF version](#)

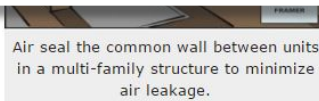
Scope **Description** Success Climate Training CAD Compliance More Sales

Scope

Air seal the common wall between units in a multi-family structure to minimize air leakage and provide a control layer for sound, smoke, fire, and air quality.



- In multifamily buildings, air seal the gap between the wall) and at all external
- Confirm wall sealing measures safety requirements
- Possible air spray foam for sealing the bottom plate to subfloor and bottom and top plates to sheathing in wood-framed walls, fire-rated caulk around plumbing and wiring, and two-part urethane foam for masonry block walls.



Air seal the common wall between units in a multi-family structure to minimize air leakage.

<https://basc.pnnl.gov/resource-guides/air-sealing-multifamily-party-walls>

Questions?

Gary Schroeder
Sr. Energy Services Engineer
gschroeder@fcgov.com
(970) 221-6395

Kim DeVoe
Energy Services Engineer
kdevoe@fcgov.com
(970) 221-6749

Brad Smith
Energy Code Compliance Specialist
brsmith@fcgov.com
(970) 416-4321