

# Mail Creek Stream Rehabilitation Project



## QUICK FACTS

### Where

Mail Creek from Mail Creek Lane downstream to the confluence with Fossil Creek

### Timeline

2022 - Planning and design

2022-23 - Construction from winter-spring

2023 - Planting and revegetation begins

2023-26 - Revegetation establishment

### Goals

- Improve environmental health of watersheds in Fort Collins
- Create sustainable habitat within city streams
- Improve connectivity throughout each basin
- Improve water quality within urban streams
- Integrate stream improvements into existing City Master Plans

Stream rehabilitation and projects repair areas of streams where the ecology, safety, structure and water quality have changed over time. The Mail Creek Project will reshape and stabilize the eroding banks along a specific section of Mail Creek.

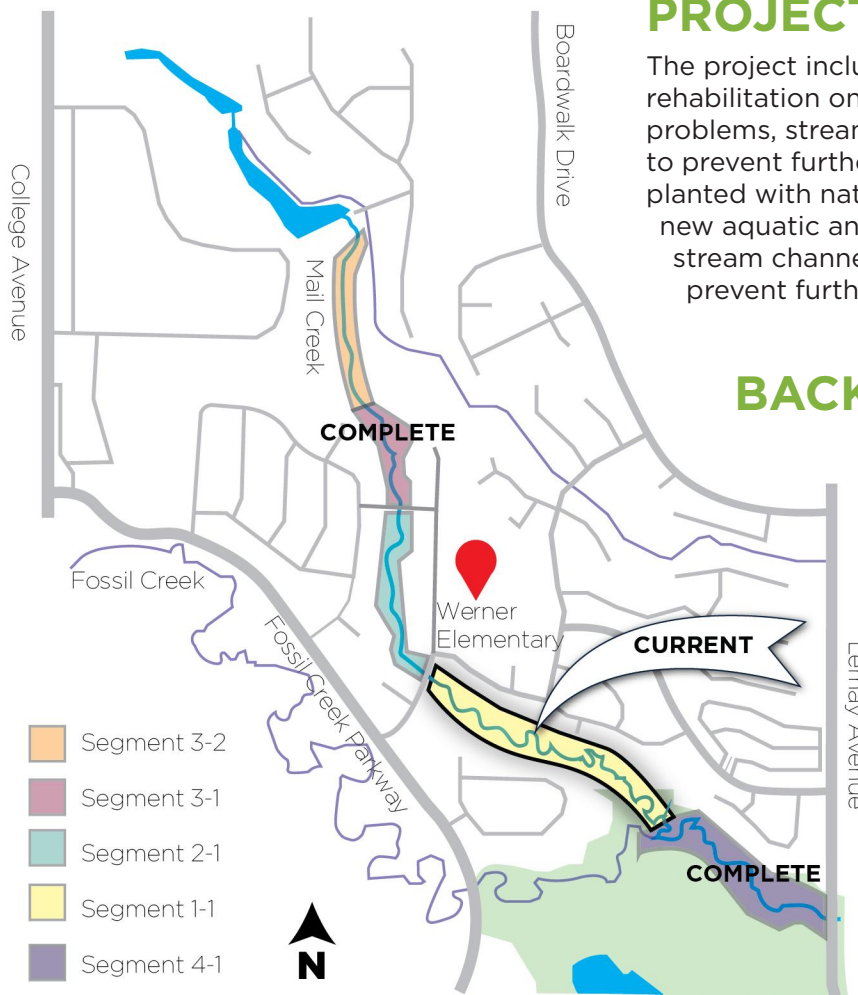
## PROJECT DETAILS

The project includes stream stabilization and rehabilitation only. To correct erosion and water quality problems, stream banks will be flattened and reinforced to prevent further degradation. The rebuilt slopes will be planted with native grasses, plants and shrubs to provide new aquatic and riparian habitat for fish and wildlife. The stream channel may be relocated in select areas to prevent further movement.

## BACKGROUND

In 2012, staff and City Council prioritized several Stormwater projects based on public safety, water quality and other concerns. The Multi-Criteria Decision Matrix identified top ranked stream restoration projects in this area including:

- Fossil Creek upstream of Lemay Avenue through Fossil Creek Park (Completed in 2015)
- Mail Creek upstream of Passway Drive through Fossil Creek Meadows HOA property (Completed in 2020)
- Current project downstream of Mail Creek Lane





## CONSTRUCTION

Following the design process in 2022, the construction phase (phase 1) of the project will move forward in early winter into spring of 2023. Subsequently, the revegetation establishment and stabilization phase (phase 2) of the project begins. Phase 2 may take 2-4 growing seasons to fully establish. Year-round weather patterns play a key role in the completion of this phase.

## FEEDBACK

We are here to share information about this important project planned for your neighborhood. If you have any questions please let us know.

*Example: Fossil Creek at Fossil Creek Park / Lemay Avenue (segment 4-1) Rehabilitation (completed in 2015)*



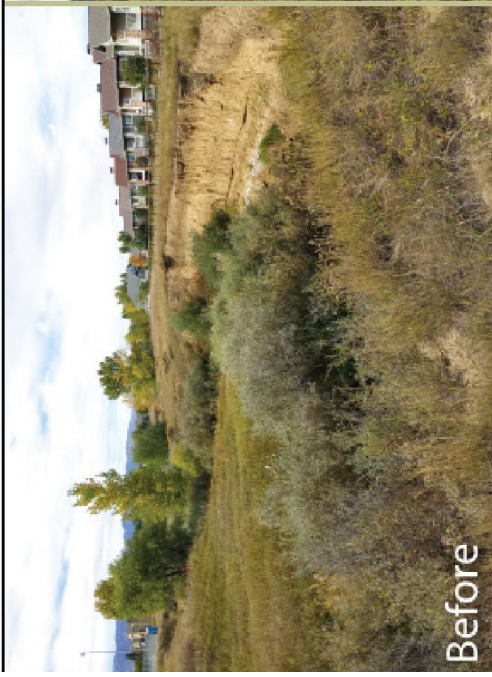
Before



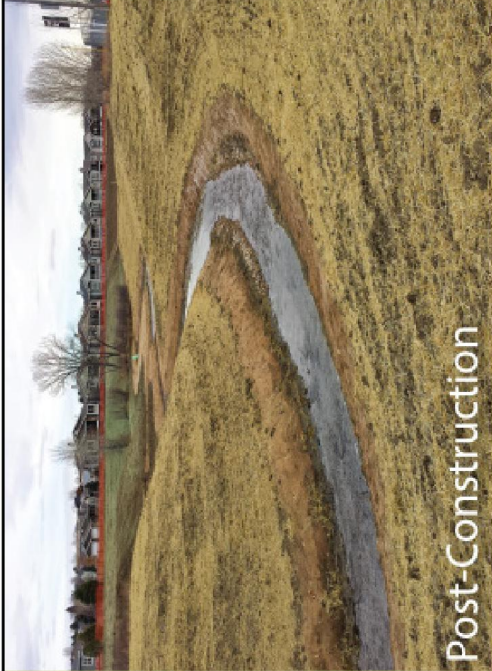
Post-Construction



± 2 Years Later



Before



Post-Construction



± 2 Years Later

## FOR MORE INFORMATION

Jason Stutzman, Special Projects Manager, [jstutzman@fcgov.com](mailto:jstutzman@fcgov.com), 970-221-6212

