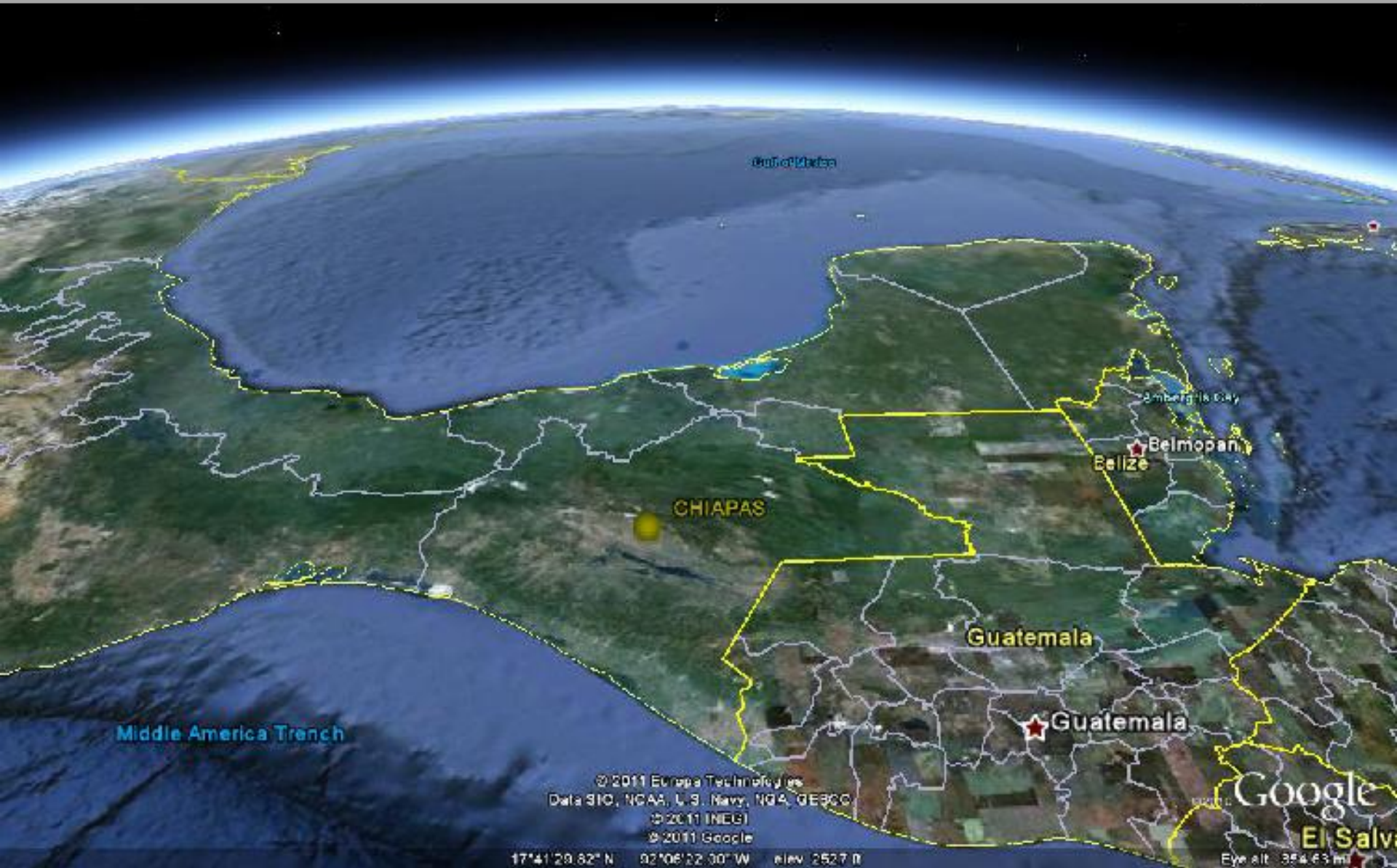


Future Relationship with San Cristóbal de las Casas:

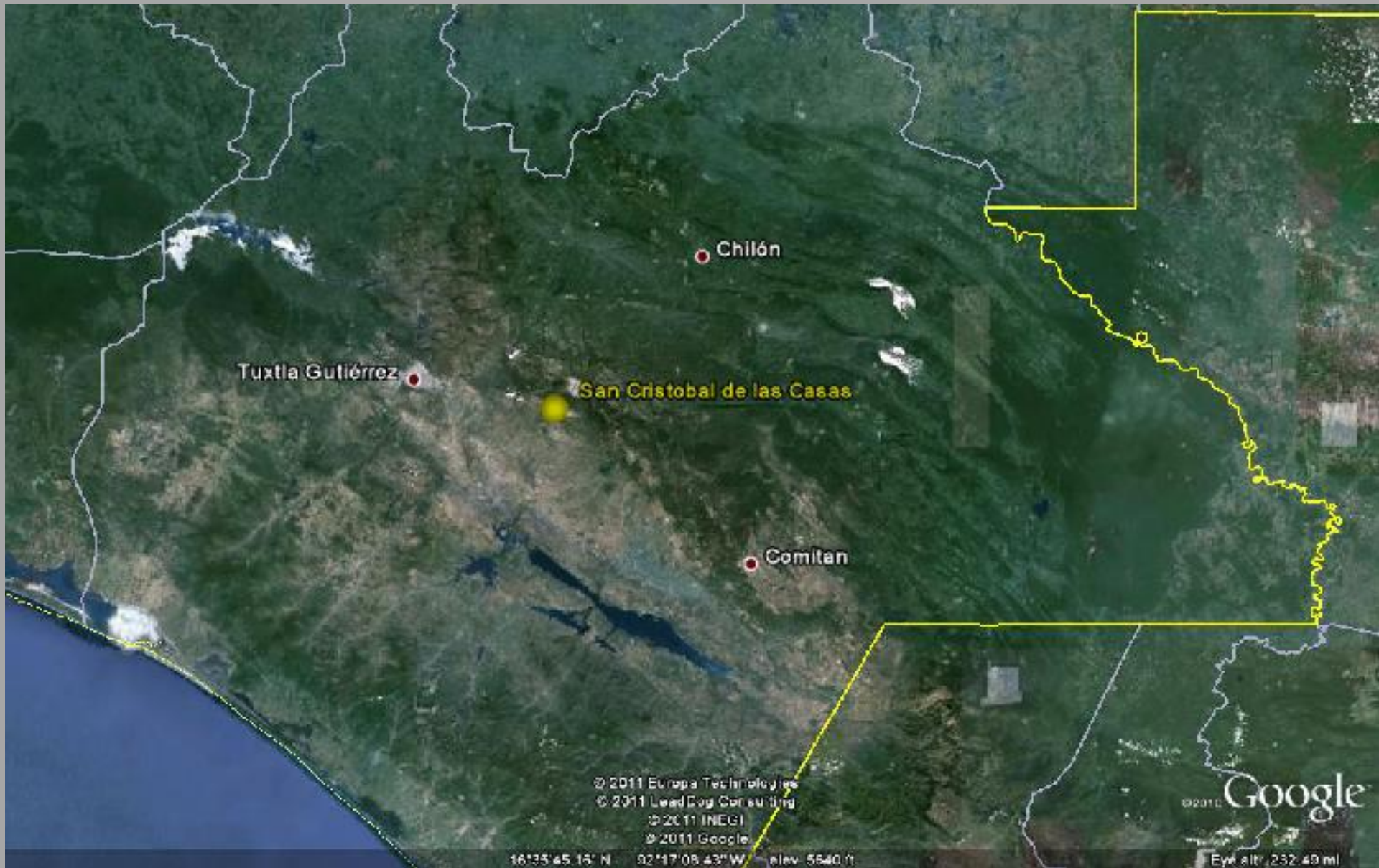
***Local Government Collaborative
Friendship City? Civil civil societies?
Sister City? Sustainable Cities?***

George Wallace

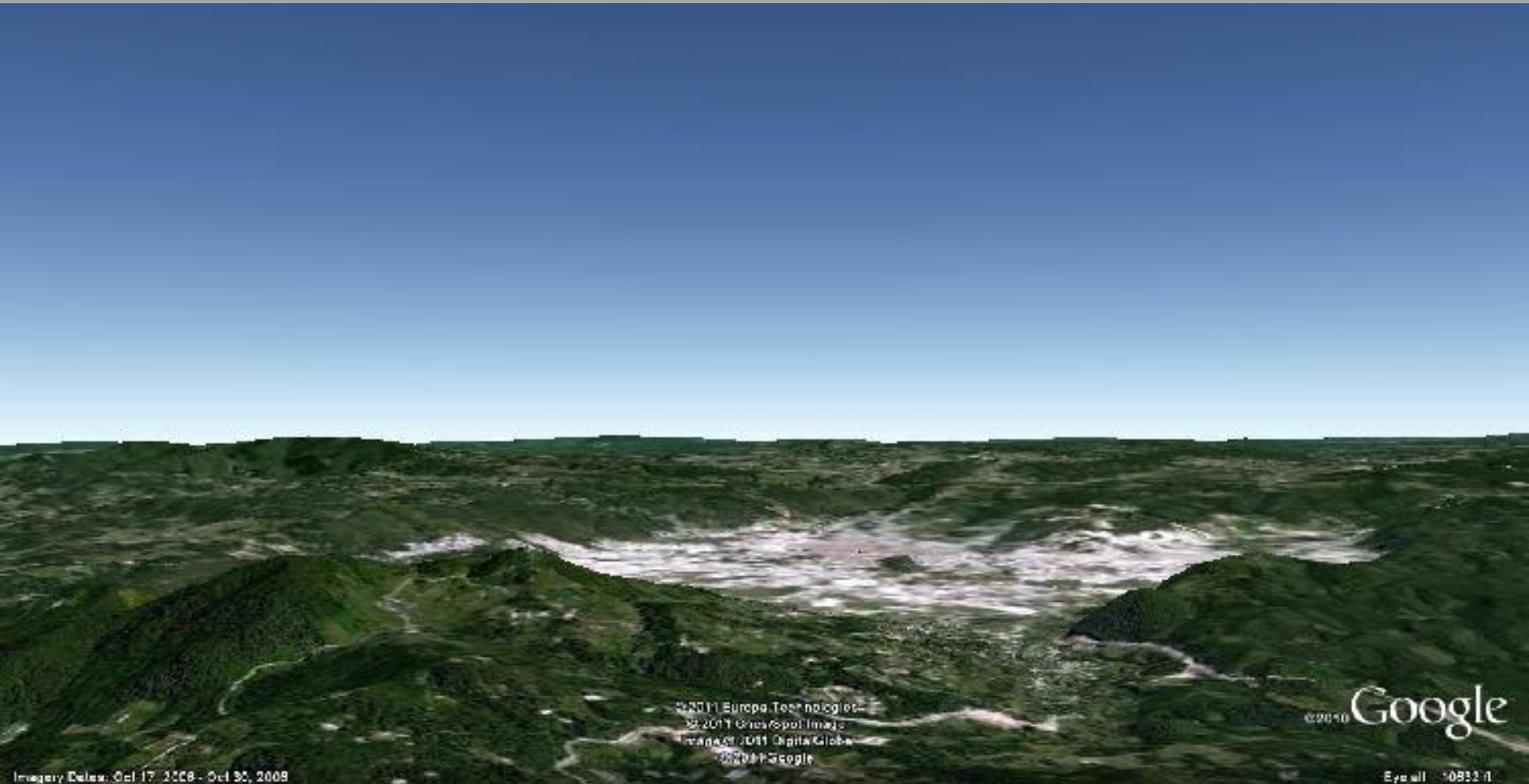
Chiapas, Mexico



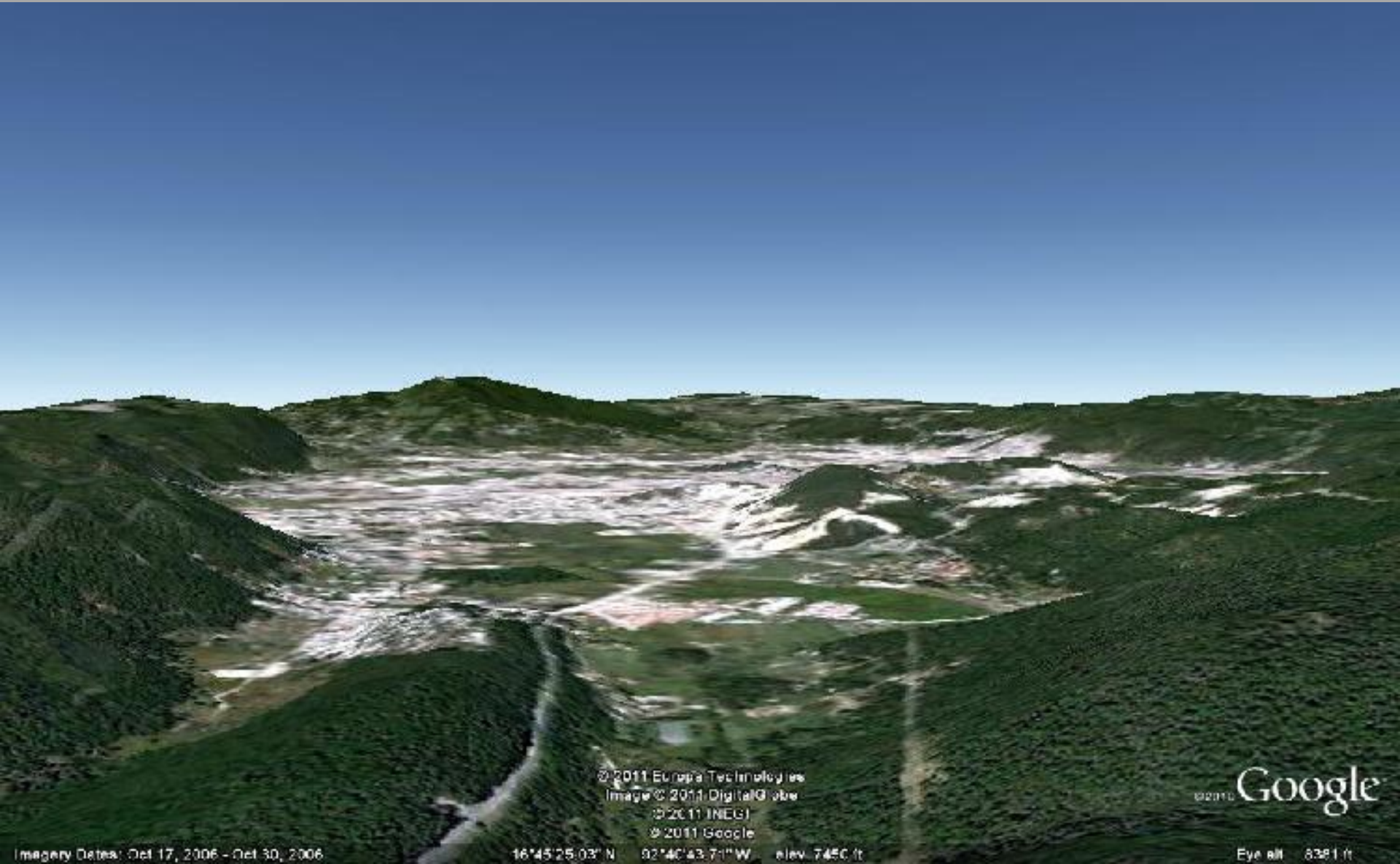
San Cristóbal de las Casas



San Cristóbal de las Casas



Ruta Verde



© 2011 Europa Technologies
Image © 2011 DigitalGlobe
© 2011 INEGI
© 2011 Google

Google

Imagery Date: Oct 17, 2006 - Oct 30, 2006

16°45'25.03" N 82°40'43.71" W elev. 7450 ft

Eye alt. 8381 ft



**CSU's Ongoing Project in Chiapas 2007-2011:
Help create a new masters degree in park and
protected area management**



**CSU's Ongoing
Project in Chiapas
2007-2011: Provide
training and
technical
assistance to park
and protected area
managers**



Programas de Manejo
Diseño de Manejo
Estrategias de Manejo
Estrategias de Manejo
Estrategias de Manejo

**CSU's Ongoing Project in Chiapas 2007-2011:
Help to Create a Training Alliance and Training Center
for Protected Area Managers in southern Mexico**



University of the Southern Frontier (ECOSUR)

Well known
graduate programs



Beautiful campus



**World class faculty and
supportive colleagues**





Faculty exchanges

Faculty exchanges

Mexican Graduate students at CSU for part of their degree





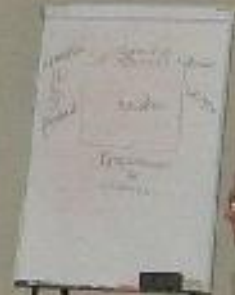
Adding richness to
our CSU
classrooms and
community

The Training Alliance has many partners: The Mexican Park Service, PRONATURA, Conservation International, The Nature Conservancy, ECOSUR, the Municipality of SCLC and CSU





CONSEJO NACIONAL DE
ÁREAS NATURALES
PROTEGIDAS



Field training courses







Conservation Leadership Through Learning



Conservation Leadership Through Learning



Mexican officials have spent time in Fort Collins looking at our Natural Areas, Climate-Wise, solid waste, water treatment and other environmental programs



A Bicycle Tour of the Fort





Getting the key to the city





We share many things in common including a beautiful environment

Biodiversity





An Effort to “Be Local” nourishing our rural communities and supporting local Agriculture

FOREST



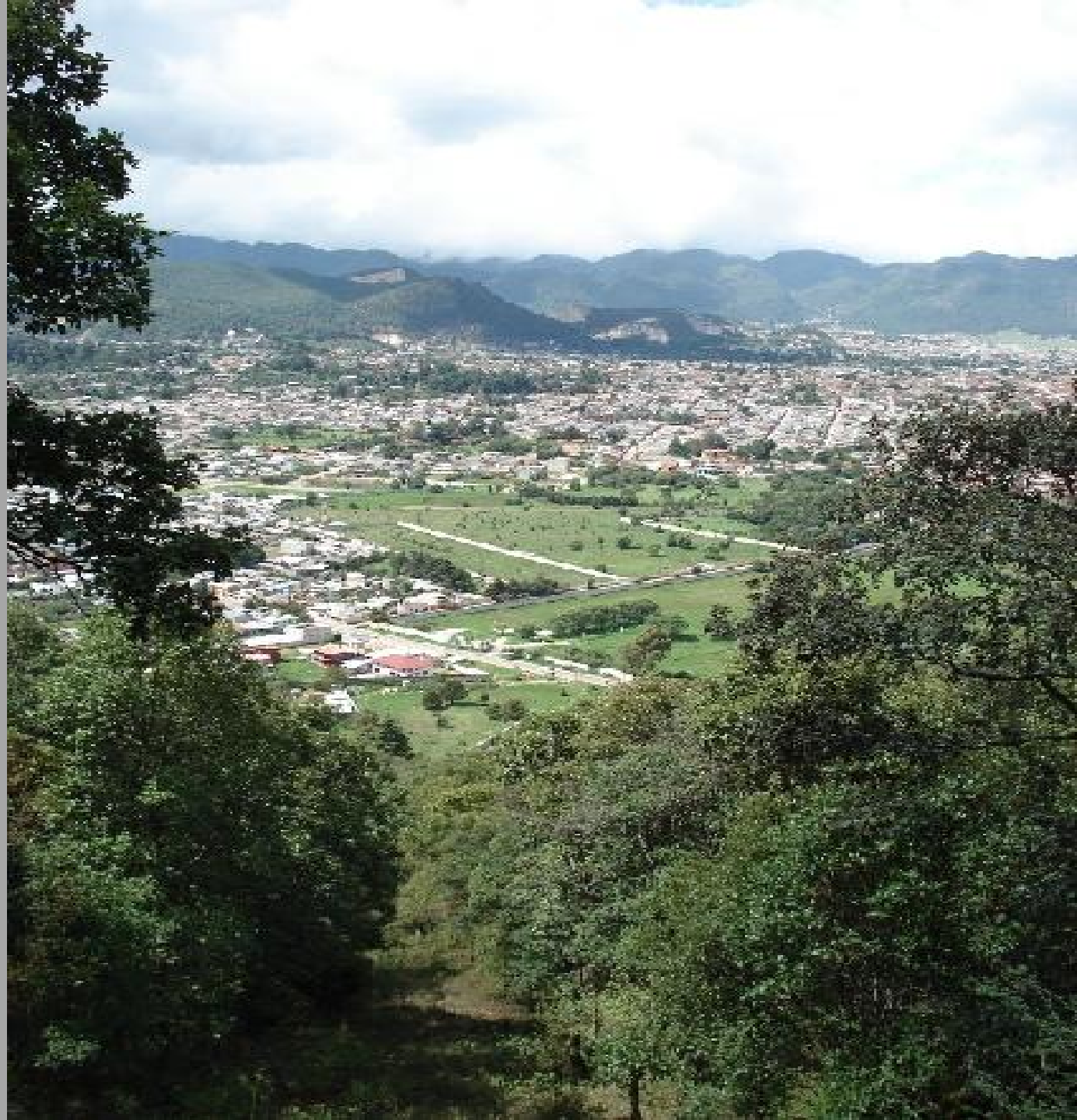


A rich history
and tourism that
seeks both
nature and
culture

Nearby parks and protected areas



**A Case of Mutual
Learning:
Watershed issues
are being
discussed by in
both communities**



Both our areas experience floods and drought!



An aerial photograph of San Cristobal, showing a dense urban grid. A large, bright white area on the left side of the image represents floodwaters. Several yellow text labels are overlaid on the image: 'Calle Domínguez' at the top, 'Calle de San Juan' and 'Calle de San Mateo' in the upper middle, and 'Calle de San Pedro' in the lower middle. A grey text box at the top contains the text 'Flooding, drought and water quality issues can be severe in San Cristobal'. A grey text box in the middle contains the text 'Flood waters' with a black arrow pointing left towards the floodwaters. A black arrow also points from the 'Flood waters' box down towards the bottom left corner of the image.

Flooding, drought and water quality issues can be severe in San Cristobal

Flood waters



**Hillside
development and
resource
extraction
threaten to make
this worse**





Protecting the hillsides around San Cristobal:

- a natural area system
- hotel tax
- trail system
- enhanced tourism opportunities

Watershed discussions







Open Space/Natural Area Strategy Session (on the shop floor)



“Dos Ciudadanos” (a pair of big hearted trouble makers - citizens)



Old friends





Future Relationship with San Cristobal de Las Casas:

***Local Government Collaborative
Friendship City? Civil civil
societies?***