

# WATER QUALITY RATING

NAME	
SAMPLE SITE	
DATE	

YOU CAN DETERMINE THE WATER QUALITY OF A STREAM BY  
THE DIVERSITY OF ANIMALS FOUND LIVING IN THE WATER.

\*\*\*\*\*

YOUR TOTAL POINTS \_\_\_\_\_ = \_\_\_\_\_  
TOTAL POSSIBLE POINTS 32

MULTIPLY THIS NUMBER BY 100 TO GET A PERCENTAGE  
OF SPECIES FOUND:

x 100 = \_\_\_\_\_ %

THIS DIVERSITY PERCENTAGE HELPS DETERMINE THE WATER  
QUALITY OR HEALTH OF THE STREAM.

QUALITY KEY:

GREATER THAN 70% = EXCELLENT WATER QUALITY

GREATER THAN 53% = GOOD WATER QUALITY

GREATER THAN 34% = FAIR WATER QUALITY

LESS THAN 34% = POOR WATER QUALITY

\*\*\*\*\*

WHY IS IT IMPORTANT TO HAVE GOOD WATER QUALITY?




# BIOTIC INDEX

FOR DETERMINING DEGREE OF  
POLLUTION IN STREAMS

CIRCLE ORGANISMS FOUND

\* \* \* \* \* 1 POINT FOR EACH DIFFERENT SPECIES FOUND \* \* \* \* \*  
6 POINTS POSSIBLE

TOLERANT  
↑  
↓  
SENSITIVE



MIDGE LARVA



POUCH SNAIL



MOSQUITO LARVA  
(WRIGGLERS)



BLACK-FLY  
LARVA

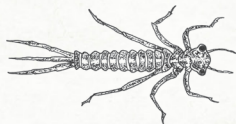


PLANARIAN  
(FLAT WORM)



LEECH

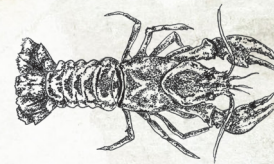
\* \* \* \* \* 2 POINTS FOR EACH DIFFERENT SPECIES FOUND \* \* \* \* \*  
14 POINTS POSSIBLE



DAMSELFLY NYMPH



DRAGONFLY NYMPH



CRAYFISH



AMPHIPOD



CRANE FLY LARVA



GILL SNAIL



ISOPOD

\* \* \* \* \* 3 POINTS FOR EACH DIFFERENT SPECIES FOUND \* \* \* \* \*  
12 POINTS POSSIBLE



MAYFLY NYMPH



STONEFLY NYMPH



RIFFLE BEETLE



CADDISFLY LARVA

MAYFLIES, STONEFLIES AND CADDISFLIES ARE INDICATOR SPECIES