



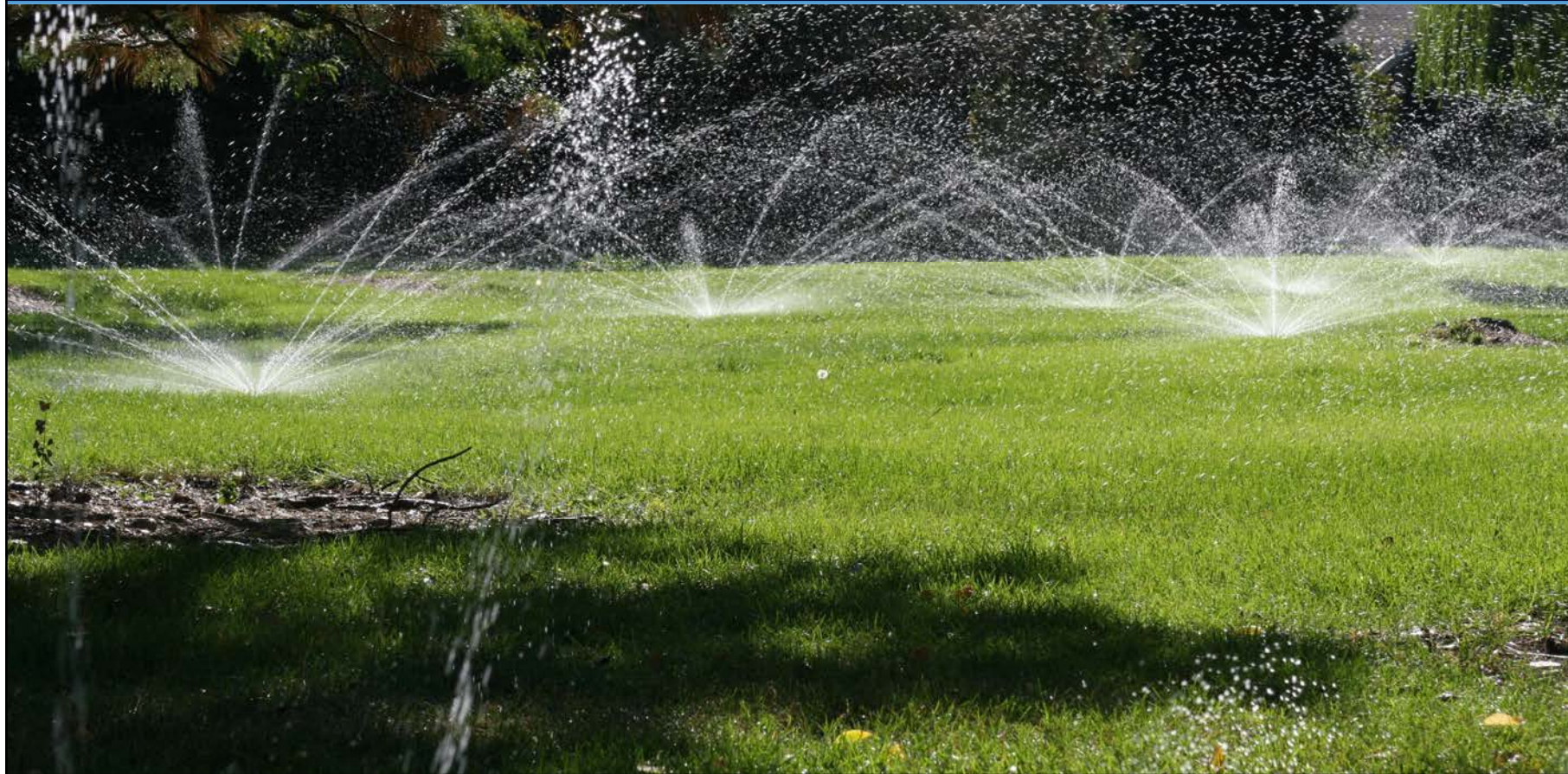
June 10, 2021

# Rotate to Rotary Nozzles

Eric Olson

Irrigation Specialist  
Fort Collins Utilities





Sprinkler heads require water pressure to perform optimally

- Too little pressure
  - Water misses target
- Too much pressure
  - Wastes water

High water pressure is common along the Front Range



## Spray heads

### House bill 19-1231

“Spray head bodies sold in the State of Colorado are required to have pressure reducing stems”

Spray heads perform best at 30 psi

Typically, these heads operate closer to 60 psi and above







Spray heads with water pressure above 30 psi show signs of misting and drifting water

The high-water pressure forces water thru the nozzle, the size of the droplet is changed and drifts away from hitting target

Water pressure also adds gallons to each nozzle over 30 psi.



These are the steps to converting your spray nozzle zones into rotary nozzles

1. Turn on zone from controller
2. Flag all the heads in the zone
3. Measure each heads radius
4. Measure distance from adjacent heads
5. Remove spray nozzles
6. Install rotary nozzles
7. Potential rebate(s)



1. Flag all the heads
2. Measure the distance to adjacent heads
3. Measure the radius of the angle
  1. 90
  2. 180
  3. 360





Pay attention to all angles of the radius

- House
- Street
- Deck / fence

Record this information:

nozzles	throw	radius
---------	-------	--------

3	= 15' x	180
---	---------	-----

2	= 15' x	90
---	---------	----

2	= 12' x	180
---	---------	-----

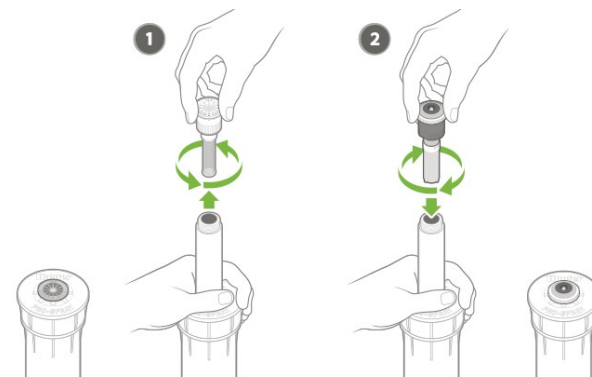
7 total nozzles with zone



### Secure spray head shaft

#### Multiple ways to secure shaft

- Channel locks
- Small screwdriver
- Fancy tool
- Friend with a good grip





Carefully slip a small screwdriver in-between the wiper seal and shaft

**Carefully please**

Hold onto shaft while unthreading nozzle



Hold onto the shaft while removing and installing nozzles

It's no fun trying to grab the nozzle if it falls into the body of the head



- Rotary nozzles have a mark to identify where the left side throw begins
- Align the mark with the left side
- Adjust the right side with water on







If changing out existing heads for PRS heads

- water pressure = distance

Install PRS heads with higher pressure for longer distances

PRS heads are available:

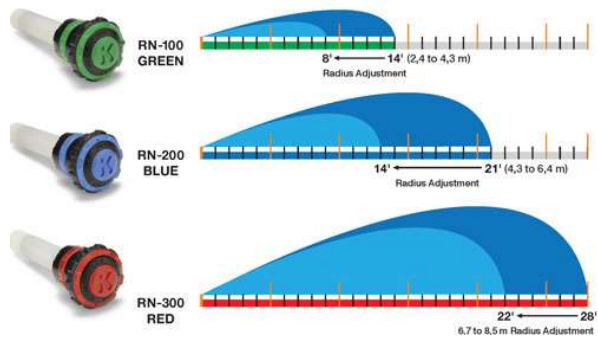
- 30 psi
- 35 psi
- 40 psi
- 45 psi



to 14' (to 4.6m)      13' to 18' (4.0m to 5.5m)      17' to 24' (5.2m to 7.3m)      Strip Nozzle



Three Nozzle Radius Options



Rain Bird RVANS

- No tool needed

Hunter MP Rotator

- Tool necessary to adjust



K Rain Rotary

- No tool needed





Rotary nozzles perform better and waste less water with our high-water pressure along the Front Range

- Waste less water!
- Improve coverage!

#### **Rotary nozzles**

- Rain Bird - RVAN
- Hunter - MP Rotator
- K Rain - Rotary nozzle
- Toro – Precision rotary nozzle

**July is smart irrigation month  
look for irrigation sales**









**THANK YOU!**

For More Information, Visit

[fcgov.com/XIP](https://fcgov.com/XIP)

[eolson@fcgov.com](mailto:eolson@fcgov.com)

