

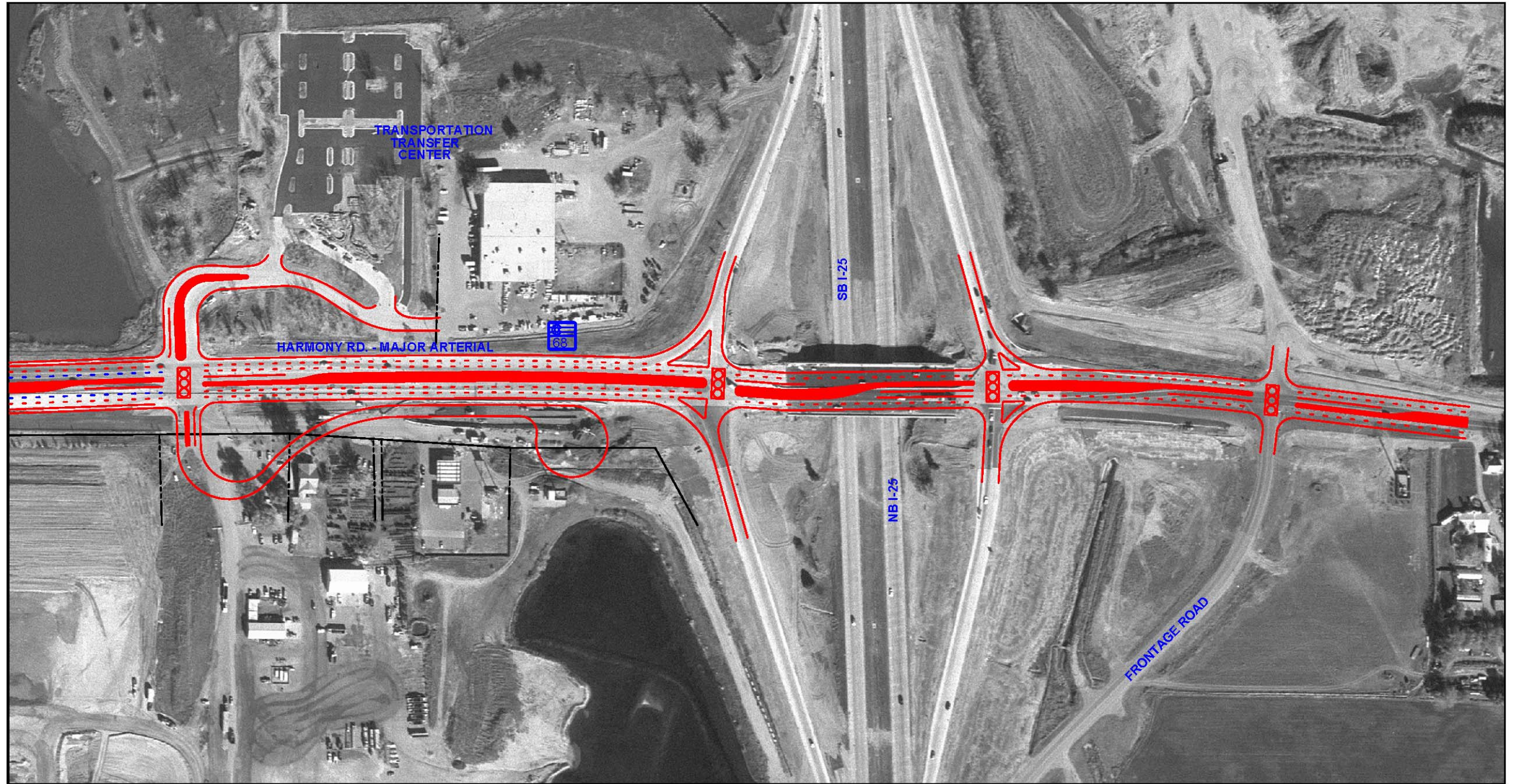
HARMONY ROAD ACCESS CONTROL PLAN UPDATE

SCALE: 1"=400' (APPROX.)

LEGEND	PUBLIC STREETS	PERMITTED MOVEMENTS	TRAFFIC SIGNALS	MEDIANS	ACCESS CIRCULATOR	APPROXIMATE RIGHT-IN/ RIGHT-OUT ACCESS LOCATION
EXISTING						
PROPOSED						



FIGURE 3.25
LCR 7



HARMONY ROAD ACCESS CONTROL PLAN UPDATE

SCALE: 1"=400' (APPROX.)

LEGEND	PUBLIC STREETS	PERMITTED MOVEMENTS	TRAFFIC SIGNALS	MEDIANS	ACCESS CIRCULATOR	APPROXIMATE RIGHT-IN/ RIGHT-OUT ACCESS LOCATION
EXISTING						
PROPOSED						



FIGURE 3.26
FRONTAGE ROAD ACCESS TO I-25

3.7 Cost Estimates

Conceptual level cost estimates (Year 2004 dollars) have been prepared on a more detailed segment-by-segment basis. Since the improvement recommendations are conceptual in nature, detailed cost estimates were not prepared. The following estimated costs for improvements to these sections were used to develop the overall conceptual cost estimate. The costs for these segments include design, construction and construction observation but do not include right-of-way acquisitions or displacements/relocations or cost of parallel streets:

- \$8,700,000 College Avenue to Lemay Avenue
- \$8,700,000 Lemay Avenue to Timberline Road
- \$6,675,000 Timberline Road to Zeigler Road
- \$10,680,000 Zeigler Road to I-25
- \$2,000,000 Intersection Improvements at Harmony Road and Zeigler Road
- \$1,200,000 for 4 traffic signals

The estimated total cost (in Year 2004 dollars) for all recommended improvements for Harmony Road (SH68) is \$37,955,000.