

# Right Angle Crashes

Right angle crashes occur at intersections when vehicles arrive on perpendicular roads and collide. There are two main types of right angle crashes – one where entering traffic has stopped, and one where entering traffic disregards a stop or signal.

Failure to yield after stopping – Typical contributing factors to these crashes include sight obstructions such as fences, trees, shrubs, parked cars, or approaching vehicles that prevent the stopped driver from seeing conflicting traffic. The illustration below shows an example where right turning traffic on the main street limits visibility for motorists stopped at a STOP sign or signal on the side street, effectively hiding approaching traffic in the through lanes.

Passing a signal/STOP sign without stopping - Typical contributing factors to these crashes include inattention, wide streets (that make STOP signs less visible), “busy” areas where numerous distractions tend to make traffic control devices blend in or become less obvious, and icy roads.

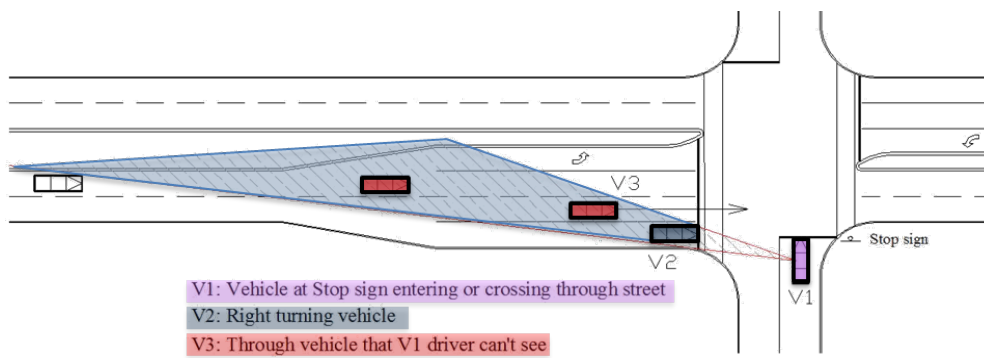


Figure 39  
 Depiction of typical right angle crash

## Number of Right Angle Crashes

The chart below shows the historical trend of right angle crashes in Fort Collins. The general trend was increasing since 2012, but down slightly in 2018. The number of severe right angle crashes have been very consistent over 10 years.

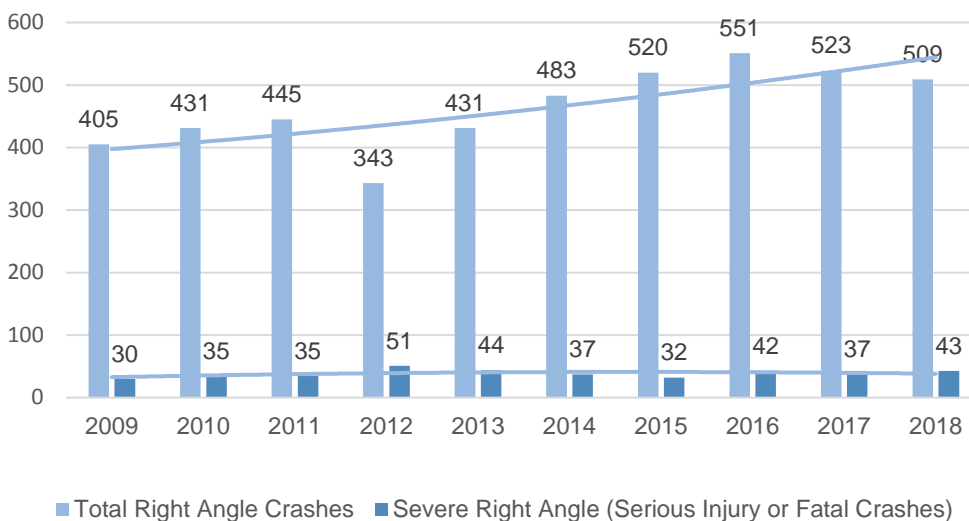


Figure 40  
 Historical Right Angle crash data (10 years)

## Right Angle Crashes by Type and Location (2014–2018)

As shown, almost two-thirds (64%) of right angle crashes occur where someone stops but then proceeds into oncoming traffic (shades of blue in the chart). Most of the remaining crashes (35%) are the result of a motorist running a red light or stop sign.

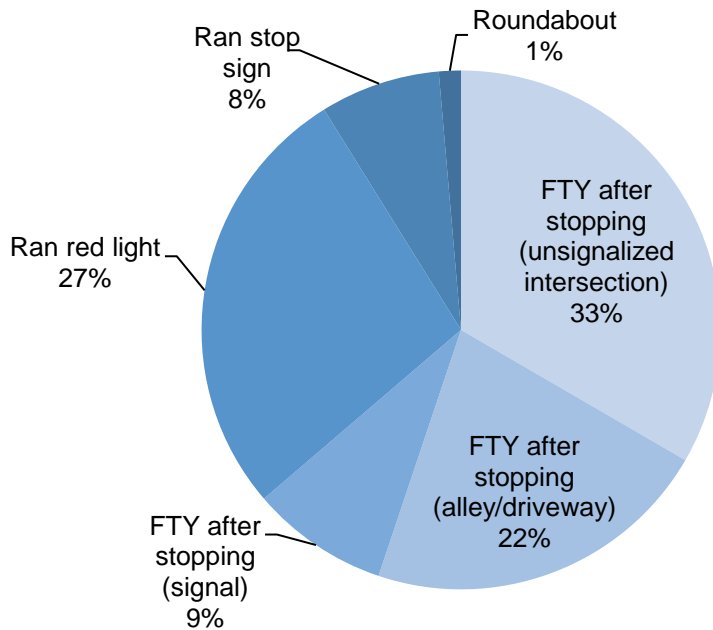


Figure 41

Right angle crashes by type (2014-2018)

FTY = Failure to Yield

## Fixed Object Crashes

Fixed object crashes are single vehicle crashes where a driver collides with a fixed roadway feature such as a curb or a median or runs off the road and hits a roadside feature such as a tree or utility pole.

Minor fixed object crashes often occur in inclement weather. The other main contributor to these types of crashes is alcohol. Seventeen percent (17%) of all fixed object crashes involve alcohol. For severe crashes the percentage related to alcohol goes up to almost 42%.

### Number of Fixed Object Crashes

The chart below shows the historical trend of fixed object crashes in Fort Collins. These crashes have been tracking relatively consistent in the past five years.

**17%**  
of all fixed object crashes involve alcohol.

**42%**  
of all severe fixed object crashes involve alcohol