

# Section 2

## General Safety Information

The total number of crashes per year for the past five years is shown below. Despite yearly variations, both total and severe crash numbers are relatively consistent with slight downward trend. (For comparison, population has increases by 10%.)

Severe crashes in the past year are down **15%**

### Total Number of Crashes

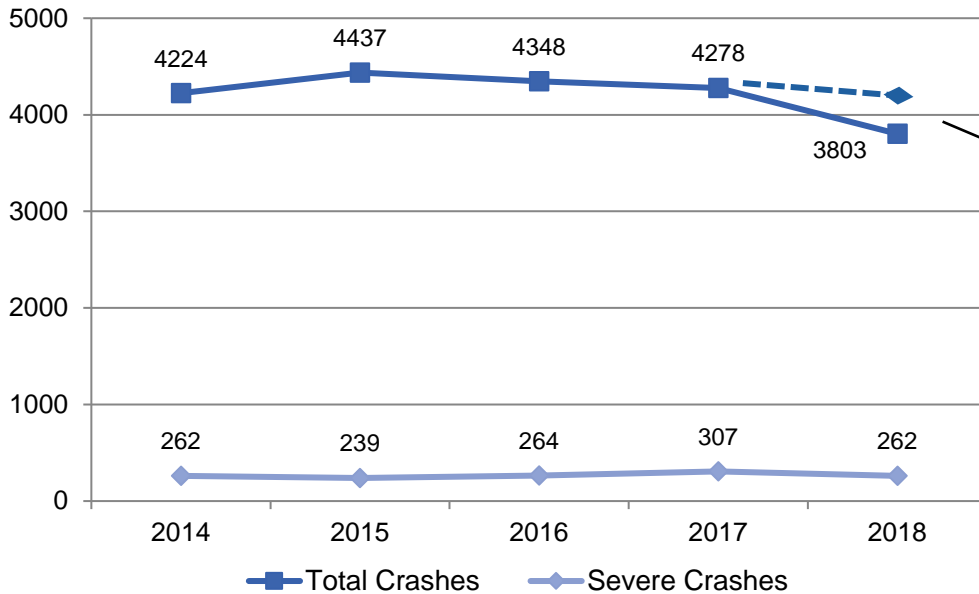


Figure 1

Total number of crashes 2014 to 2018

Note:

2018 was the first year when non-injury crashes reported after the fact by involved parties were not included (typically about 300 / year). Those reports are now going directly to the State, and therefore no longer captured by the City.

### Number of Total Crashes with Injuries

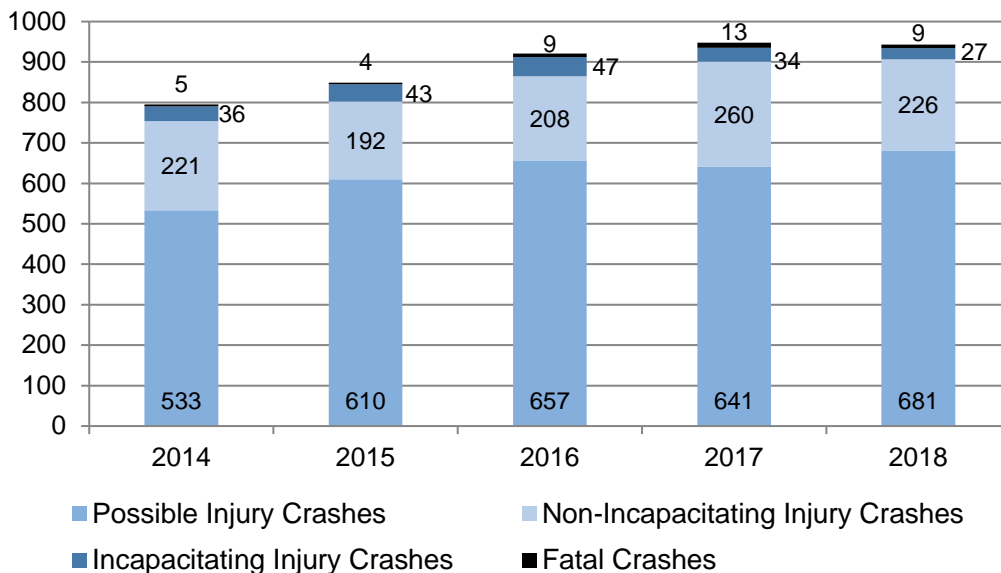


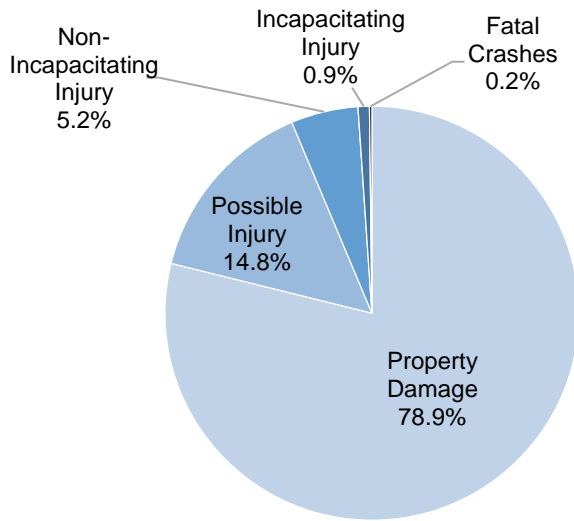
Figure 2

Crashes with possible injuries, non-incapacitating injuries, incapacitating injuries, fatal crashes

A severe crash is one that involves non-incapacitating, incapacitating, or fatal injuries

## Overall Crash Severity

The chart at right shows the overall severity for crashes (2014-2018). Almost 80% of all reported crashes do not result in an injury, and only slightly more than 6% are considered severe.



Only **6.3%** of all crashes are severe.

Figure 3  
Crash severity (2014-2018)

## Severe Crashes by Mode

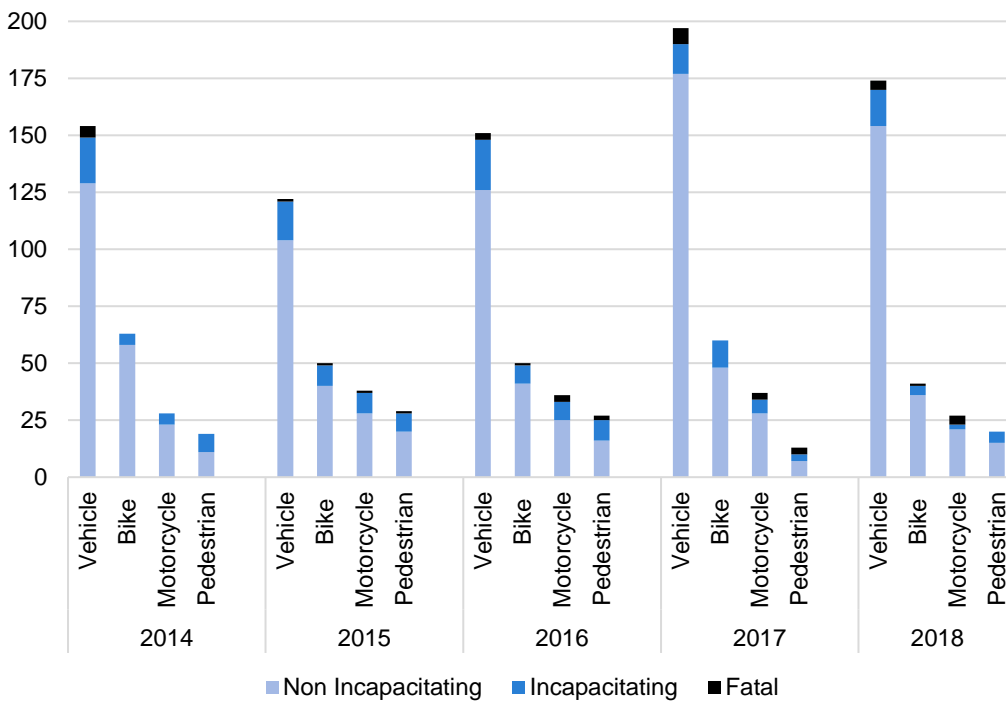
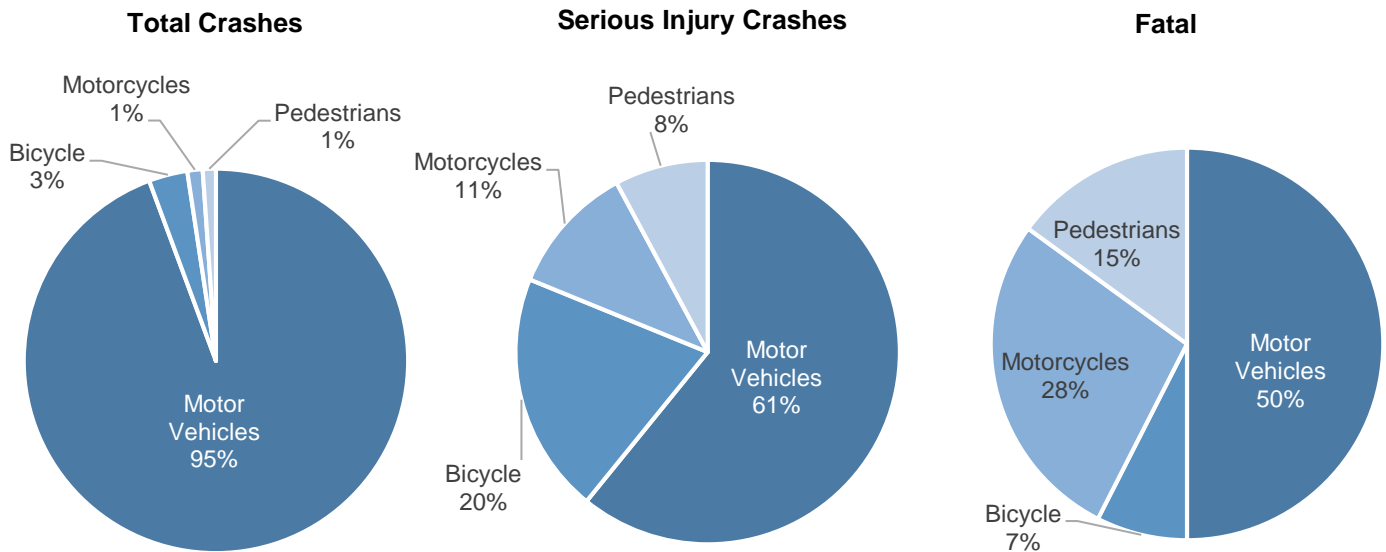


Figure 4  
Trends for severe crash data by road user (2014-2018)

## Impact on Vulnerable Road Users

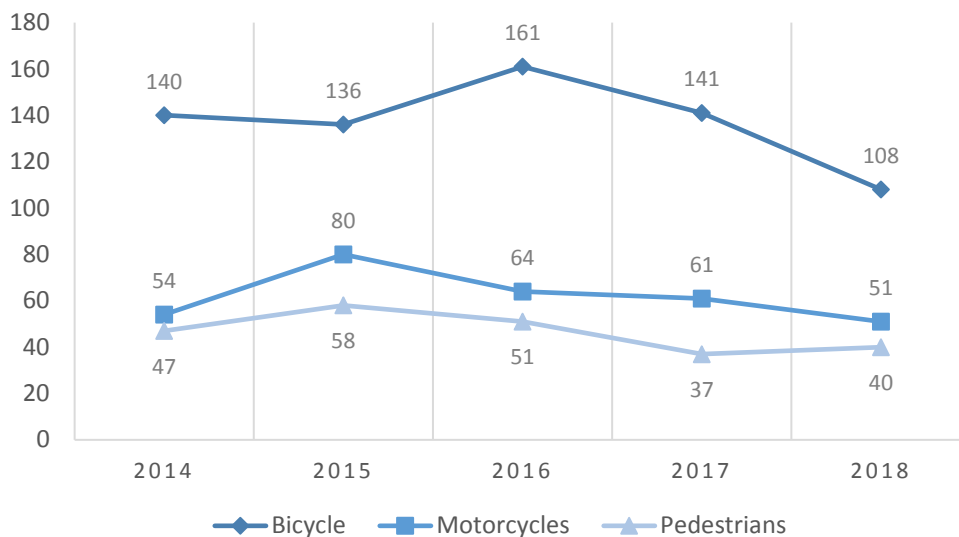
When vulnerable roadway users (bicyclists, motorcyclists, and pedestrians) are in a crash, it tends to be more severe. Motor vehicle crashes remain by far the most prevalent, but account for just 50% of fatalities.

Figure 5  
Severity impact on vulnerable road users (2014-2018)



## Vulnerable Road User Crash Trends

The total number of crashes for vulnerable road users is shown below. More detail is provided in later sections of the report for each group of road users.

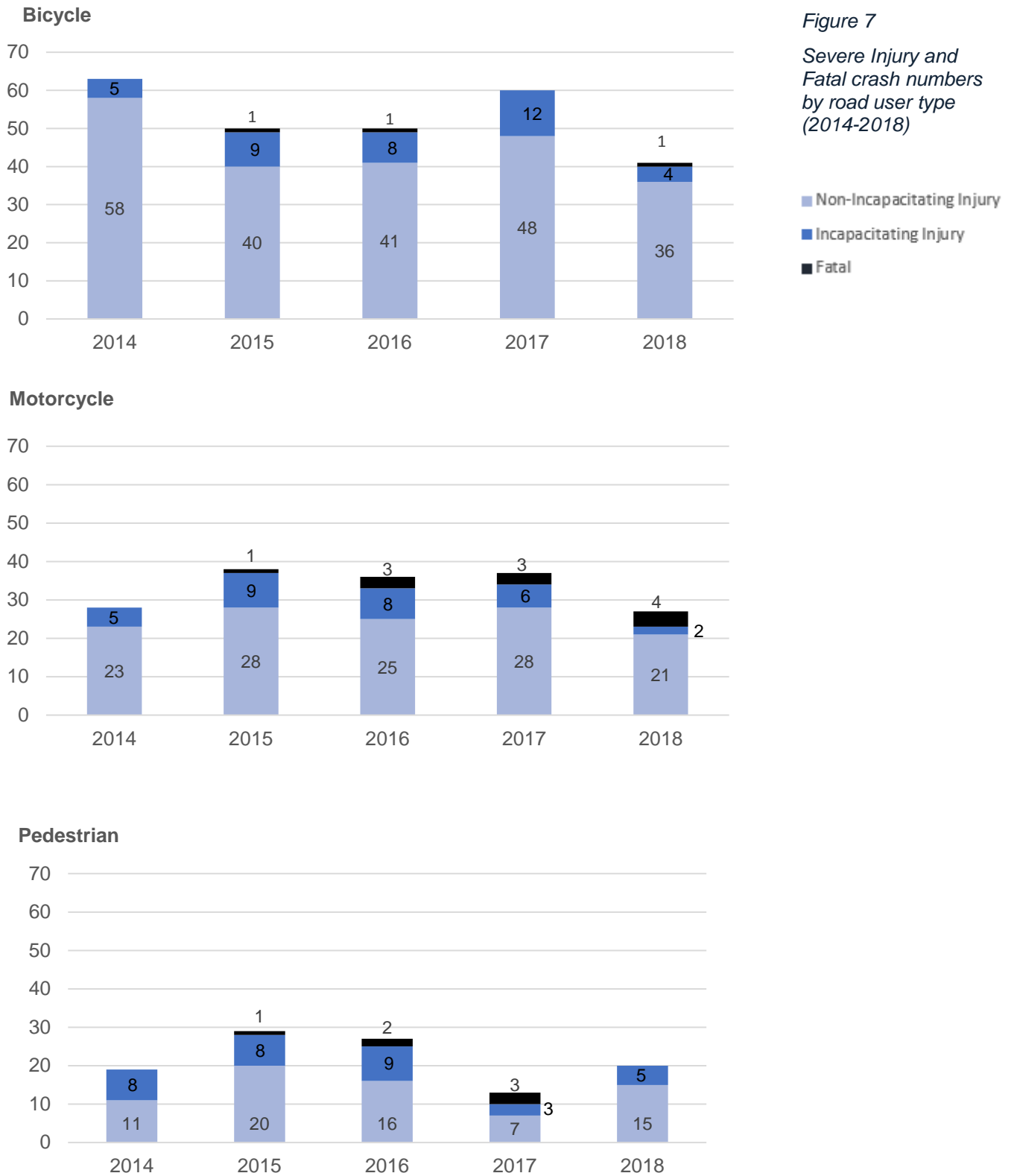


Vulnerable road users make up **6%** of all crashes but **50%** of severe crashes.

Figure 6  
Total reported crashes involving bicycles, motorcycles, and pedestrians (2014 – 2018)

Crashes involving vulnerable road users are generally trending down

## Severe Injury and Fatal Crashes for Vulnerable Road Users (Bicycles, Motorcycles and Pedestrians)



## 2018 Economic Impact of Crashes

Using figures determined by the Federal Highway Administration and published in the Highway Safety Manual, an estimation of economic costs associated with crashes in Fort Collins can be made. The crash costs shown are adjusted to reflect 2018 values. Crash costs include monetary losses associated with medical care, emergency services, property damage, and lost productivity. They also include costs related to the reduction in the quality of life related to injuries.

Societal cost of crashes in 2018:  
**\$ 165 million**

Crash Severity	Number of Crashes	Cost Per Crash	Societal Cost
Property Damage Crashes	2860	\$ 10,600	\$ 30,316,000
Possible Injury Crashes	681	\$ 65,900	\$ 44,877,900
Non-Incapacitating Injury Crashes	226	\$ 117,100	\$ 26,464,600
Incapacitating Injury Crashes	27	\$ 320,700	\$ 8,658,900
Fatal Crashes	9	\$ 6,065,200	\$ 54,586,800
<b>Total</b>	<b>3,803</b>		<b>\$ 164,904,200</b>

Table 1

*Economic impact of traffic crashes in Fort Collins in 2018*

The National Highway Traffic Safety Administration (NHTSA) completed a study on the costs of crashes. The NHTSA study not only concentrated on the costs of crashes, but also who pays the costs. The study found that society at large pays for about 75% of all costs incurred for traffic crashes. Those costs are passed on to the general public through insurance premiums, taxes, direct out of pocket payments for goods/services, and increased medical costs.

## Comparison with Other Cities

The most consistent way to compare the City's crash frequency with that of other entities is to compare the fatal crash rate (crashes per 100,000 population). The following tables are sorted by fatal crash rate and compare Fort Collins to other cities in Colorado with similar population and also compare to other peer cities nationwide with similar population (between 90,000 and 200,000).