

Motorcycle Crashes 2014–2018

From 2014-2018 there were a total of 310 reported motorcycle crashes, including eleven fatalities (four in 2018). Total crashes are trending downward in the last three years, and are similar to five years ago.

Motorcycle crashes are down **36%** since 2015

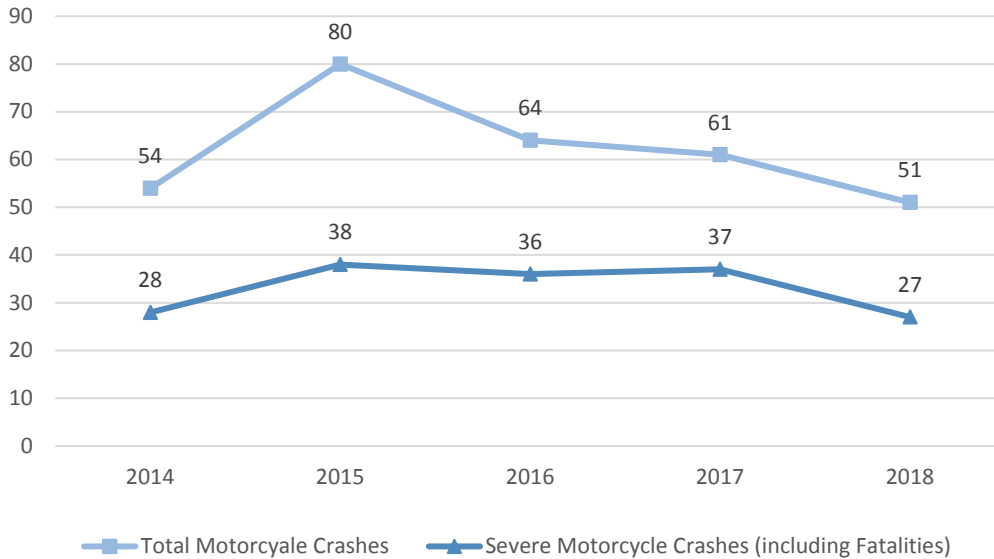


Figure 19
Motorcycle crashes (2014 – 2018)

While motorcycle crashes can follow the same patterns as other crashes they tend to be more severe as shown in the charts below. Overall, only 20% of all crashes result in some type of injury while more than 70% of motorcycle crashes result in injury.

In a crash, motorcyclists are almost **3** times as likely to be injured and **20** times as likely to be killed than people in vehicles

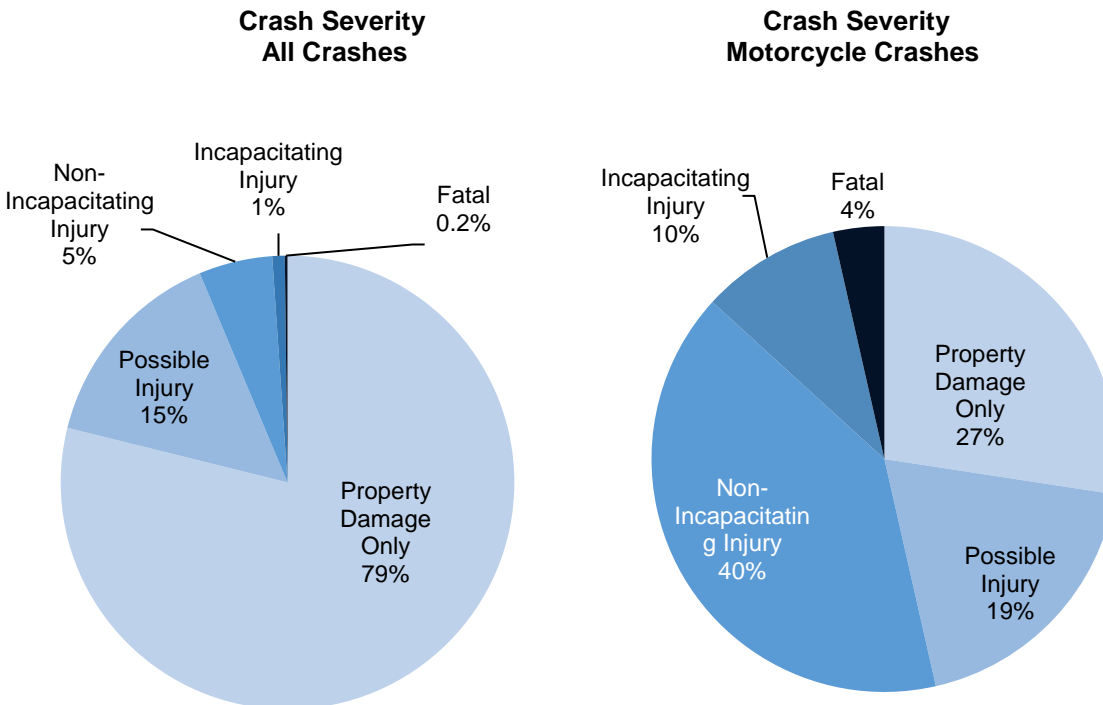


Figure 20
Comparison of crash severity between all crashes and motorcycle crashes