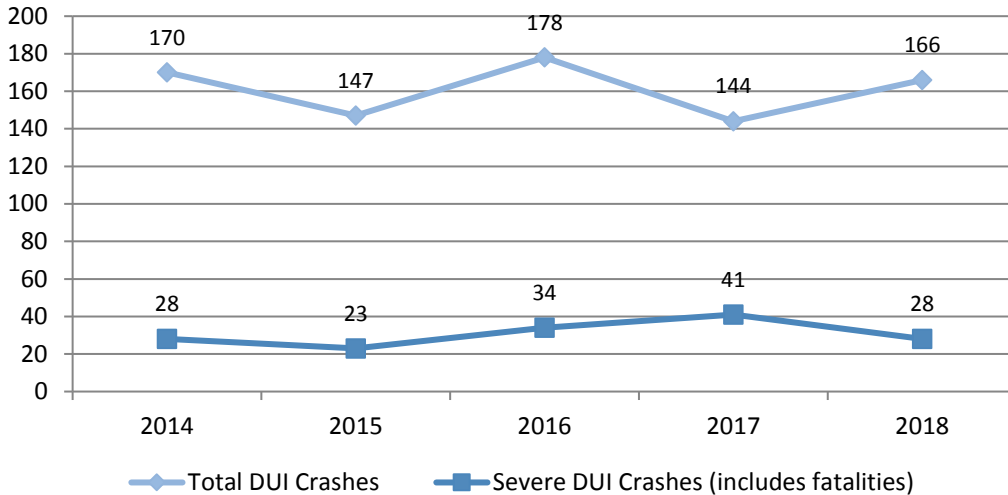


Drivers Under the Influence (DUI Crashes) 2014-2018

The graph below shows the number of DUI crashes over the past five years. The DUI crashes represent about 4% of all crashes. However, they account for 12% of severe crashes, and 25% of fatal crashes. This suggests that alcohol related crashes are more likely to result in serious injuries.

Total DUI crashes vary from year to year (including a 15% increase in the last year), but the 5-year trend is pretty consistent. Severe DUI crashes are down 30% since 2017 and are similar to the numbers in 2014 and 2015.



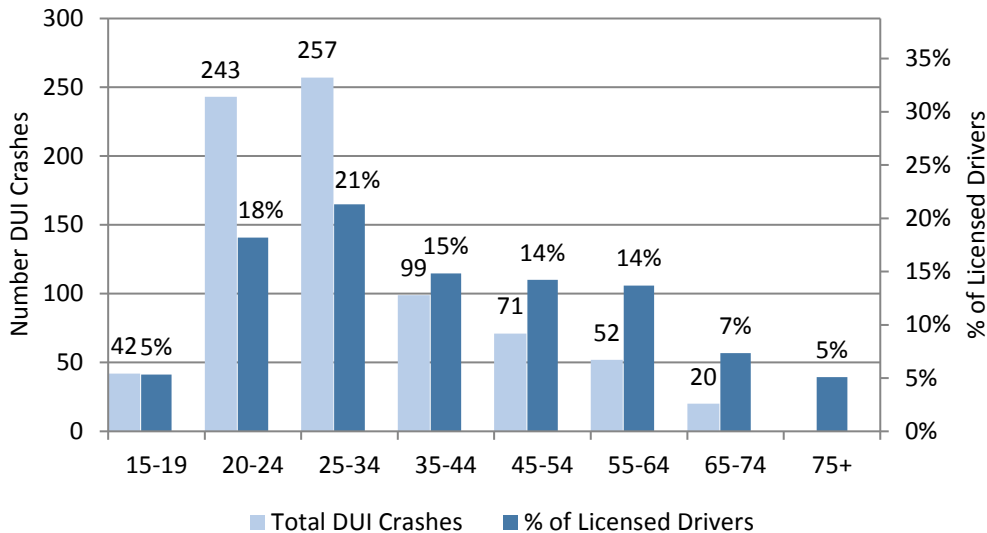
Crashes involving DUI represent
4% of all crashes
12% of severe crashes and
25% of fatal crashes

Figure 17
 DUI crash trends (2014 – 2018)

DUI Crashes by Age 2014–2018

Crashes in the past five years that involve DUI are shown below by age of at fault drivers.

Drivers below the age of 35 are significantly over-represented in alcohol related crashes given the number of licensed drivers in those age groups. Also surprising is that drivers 15 – 19 years old are involved in 5% of DUI crashes despite the fact that they have not reached legal drinking age.



Drivers between ages 20 -34 represent
40% of licensed drivers but cause
64% of DUI crashes

Figure 18
 DUI crashes by age of at fault drivers (2014 – 2018)