

# RESILIENT RECOVERY PLAN

---

## SUMMARY

In collaboration with the community, the City of Fort Collins has created a Recovery Plan to guide long-term response and rebuilding from the COVID-19 pandemic. The pandemic revealed and elevated systemic inequities in Fort Collins, and many parts of the community are still struggling. Work remains around healing, inclusion and resilience to move Fort Collins toward a vibrant future. **This plan seeks to leverage this historic opportunity to make bold, long-term investments to achieve recovery.**

### RECOVERY VISION:

**Fort Collins residents and businesses can participate in a resilient, vibrant and inclusive future.**

Many communities have developed pandemic recovery plans focused on the distribution of federal funding; however, the City built a plan with community members, internal City departments, businesses and partners to not only ensure transparency and fiscal responsibility, but also recognize and acknowledge the past to build an inclusive, resilient future.

Four specific recovery themes emerged from public engagement efforts:

**Health, Equity & Community Resilience, Economic Recovery and Environmental Resilience.**

Within each of these themes, specific outcomes and objectives were identified to guide long-term recovery and build resilience. Many of these outcomes and objectives are extensions of work the City and community have already begun, while others represent new and innovative efforts.

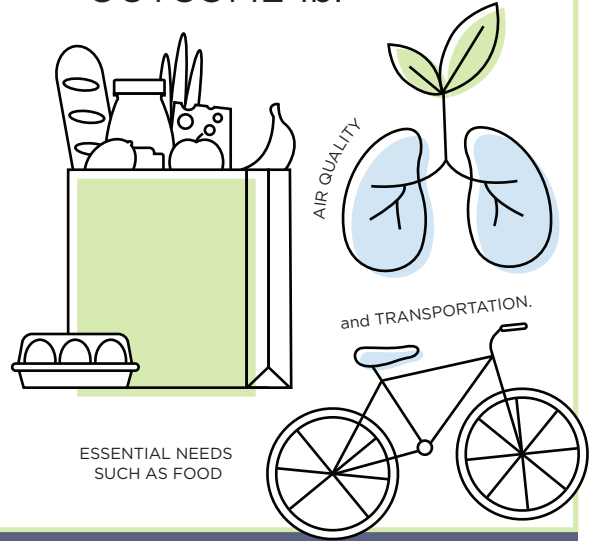
# THEMES & OUTCOMES

## THEME 1: HEALTH

*"The need for affordable housing, food, and taking care of our community members that need help because they may not have family or friends to help them has become a much more obvious issue [to me]. The economy and health risks have hurt these people that were already hurting before the pandemic. This is an emergency now."*

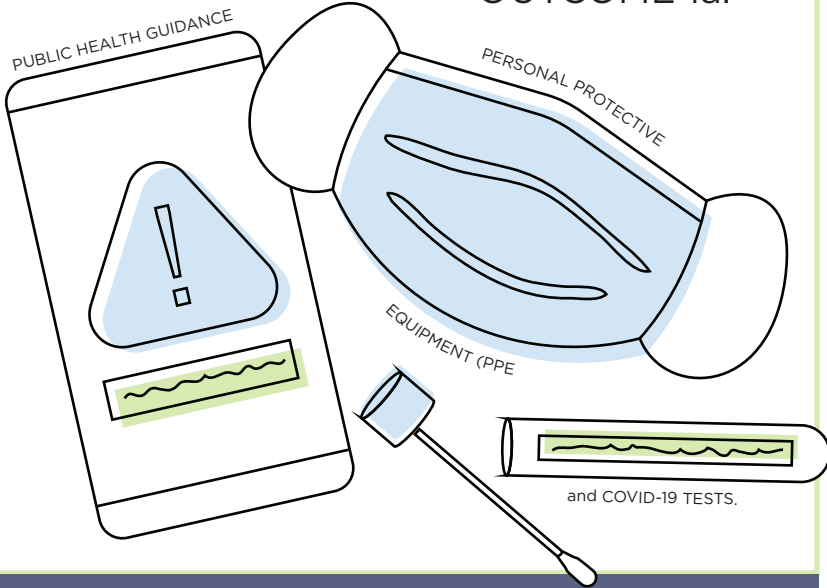
**- COMMUNITY MEMBER**

### OUTCOME 1b.



Enhance efforts to ensure basic needs are met in the community.

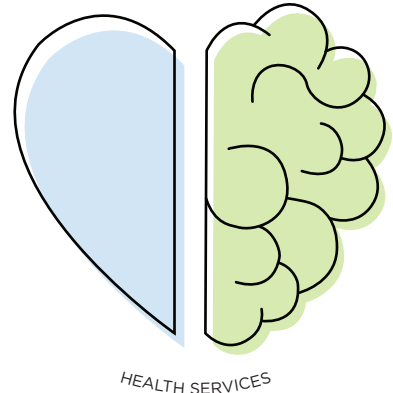
### OUTCOME 1a.



Support clear and effective communication of public health orders.

### OUTCOME 1c.

MENTAL and BEHAVIORAL



Mental and physical health is valued as necessary and prevention-based.

### OUTCOME 2c.

**24/7**

SHELTER



FOR THOSE EXPERIENCING HOMELESSNESS

Expand and leverage existing partnerships to quickly connect people experiencing homelessness (PEH) to resources.

## THEME 2: EQUITY AND COMMUNITY RESILIENCE

*"Larimer County has many very low-income persons who are unable to access housing and transportation. There are not sufficient community supports to keep them from worsening health, preventing them from homelessness, or both."*

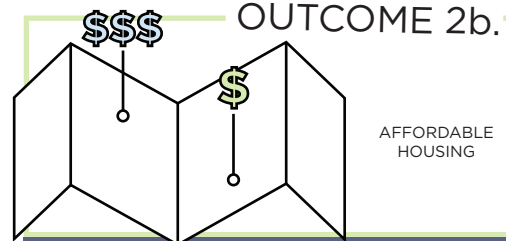
**- COMMUNITY MEMBER**

### OUTCOME 2a.



Foster a sense of belonging and community trust.

### OUTCOME 2b.



AFFORDABLE HOUSING

Accelerate the City's Housing Strategic Plan's vision that "everyone has healthy, stable housing they can afford."

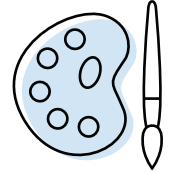
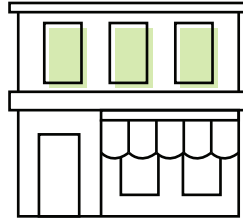
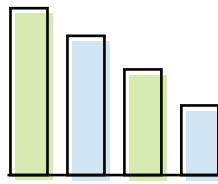
# THEME 3: ECONOMIC RECOVERY

*"While we have been fortunate to get support through emergency relief dollars, these dollars have not covered both the loss of revenue through fundraising efforts and the increased costs of operating due to COVID-19 restrictions and being open all day to support youth during remote learning."*

- COMMUNITY MEMBER

## OUTCOME 3a.

SUPPORT DIVERSE BUSINESSES

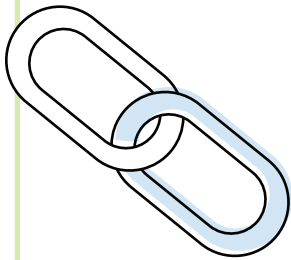


INCLUDING CREATIVES.

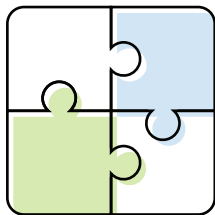
Small businesses, creatives and nonprofits have the resources they need to thrive.

## OUTCOME 3b.

PARTNERSHIPS THAT DEVELOP THE WORKFORCE BUSINESSES NEED



and FLEXIBLE

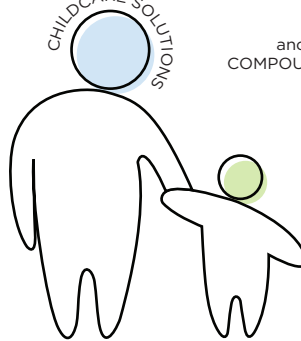


WORK ENVIRONMENTS

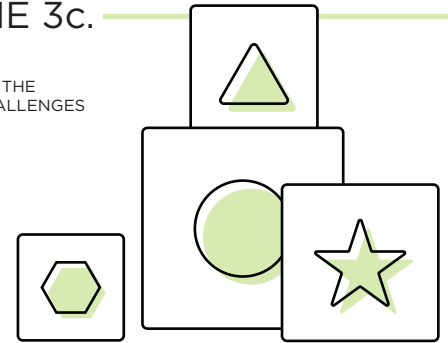
Safe and stable employment, current and future.

## OUTCOME 3c.

CHILDCARE SOLUTIONS



and ADDRESS THE COMPOUNDING CHALLENGES



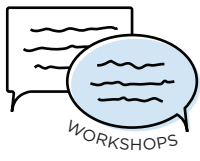
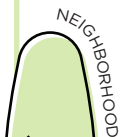
FACING THE CHILDCARE INDUSTRY and LOCAL WORKFORCE.

Equitable and affordable childcare is accessible.

# THEME 4: ENVIRONMENTAL RESILIENCE

## OUTCOME 4a.

NEIGHBORHOOD-LED



and COMMUNITY PARKS



for COMMUNITY MEMBERS.

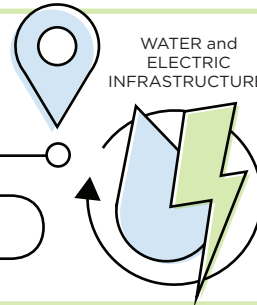
Commit to environmental justice and resilience in pursuit of our climate, zero waste, energy, water and other sustainability goals.

## OUTCOME 4b.



EFFICIENT INDOOR SPACES

TRANSPORTATION

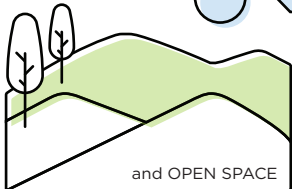


WATER and ELECTRIC INFRASTRUCTURE.

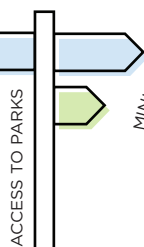
Resilient infrastructure is reliable and affordable.

## OUTCOME 4c.

NATURAL AREAS



and OPEN SPACE



ACCESS TO PARKS

MINIMIZE IMPACTS



Open space and healthy ecosystems are resilient, protected and accessible.

*"[The pandemic] has put all in new context; especially environmental health, with a serious pulmonary virus spreading amidst high AQI readings. Neighborhood developments that are disconnected from the rest of the city make the inequality and isolation of the pandemic even harder to cope with."*

- COMMUNITY MEMBER