

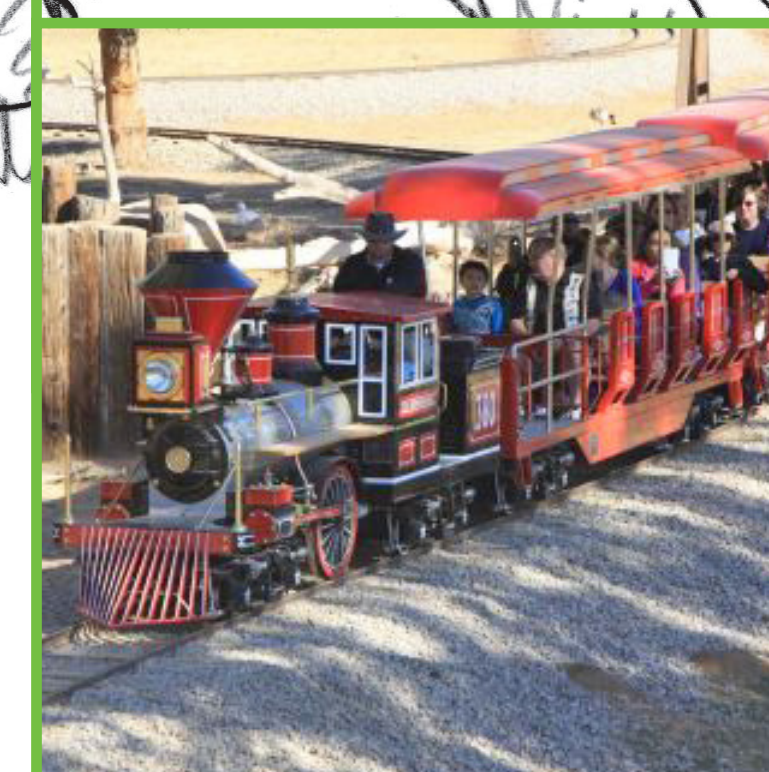
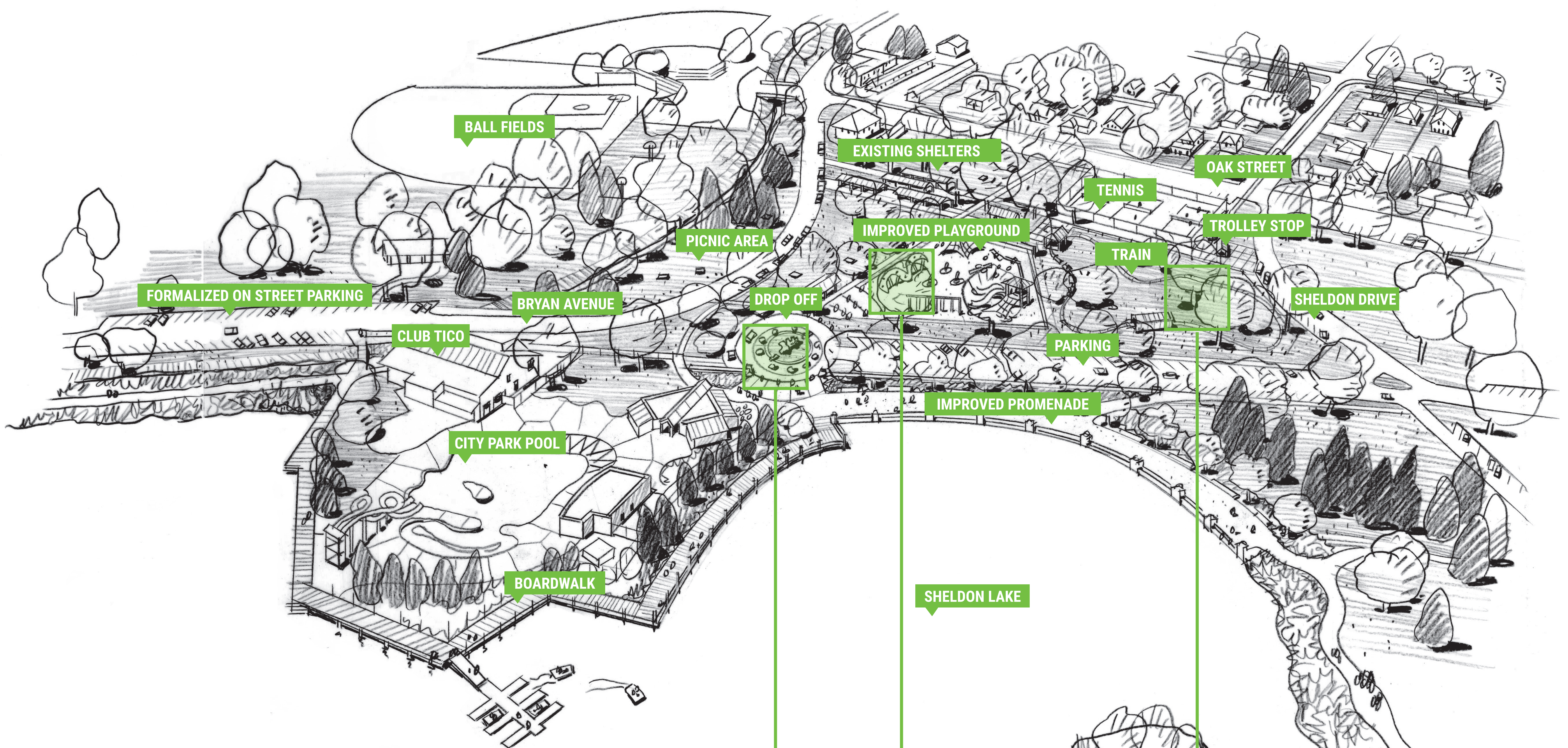
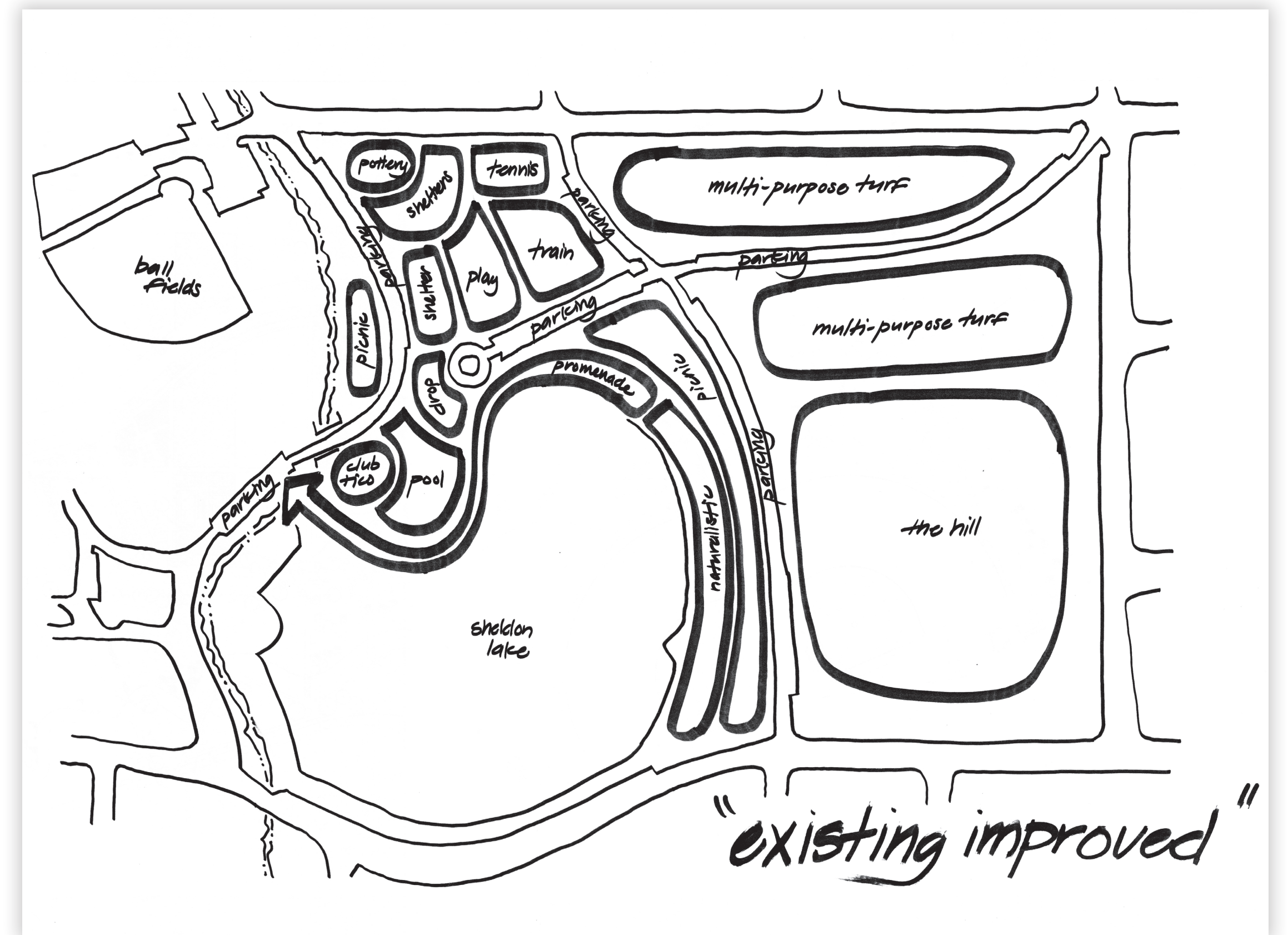


CITY PARK
TOMORROW

City of
Fort Collins

CITY PARK EXISTING IMPROVED

- A drop off and turnaround is provided near the entrance of City Park Pool. The through connection between Bryan Avenue and City Park Drive is eliminated, providing improved safety for pool visitors.
- An improved playground is provided in the location of the existing playground.
- The train is located south of the existing tennis courts.
- On street parking along Bryan Avenue is formalized to provide safer parking for pool visitors
- The existing promenade along the north edge of Sheldon Lake is improved, including low level pedestrian lighting, improved access to the lake edge and added seating areas.



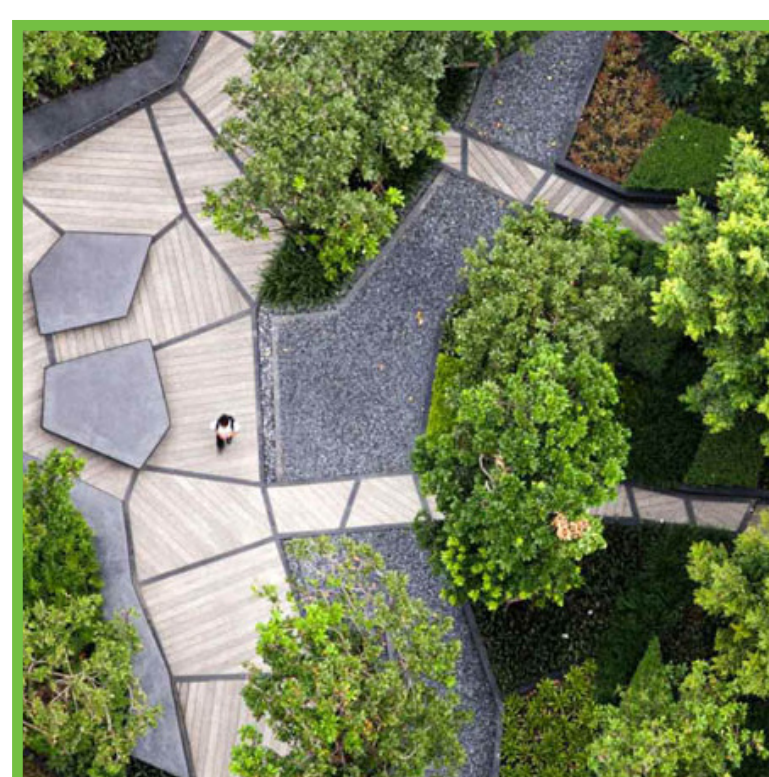
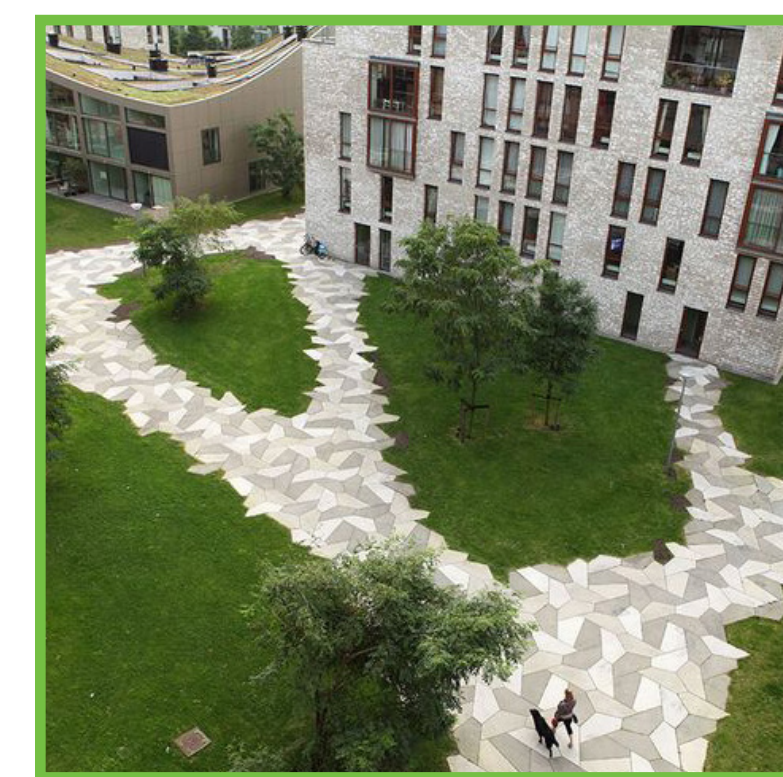
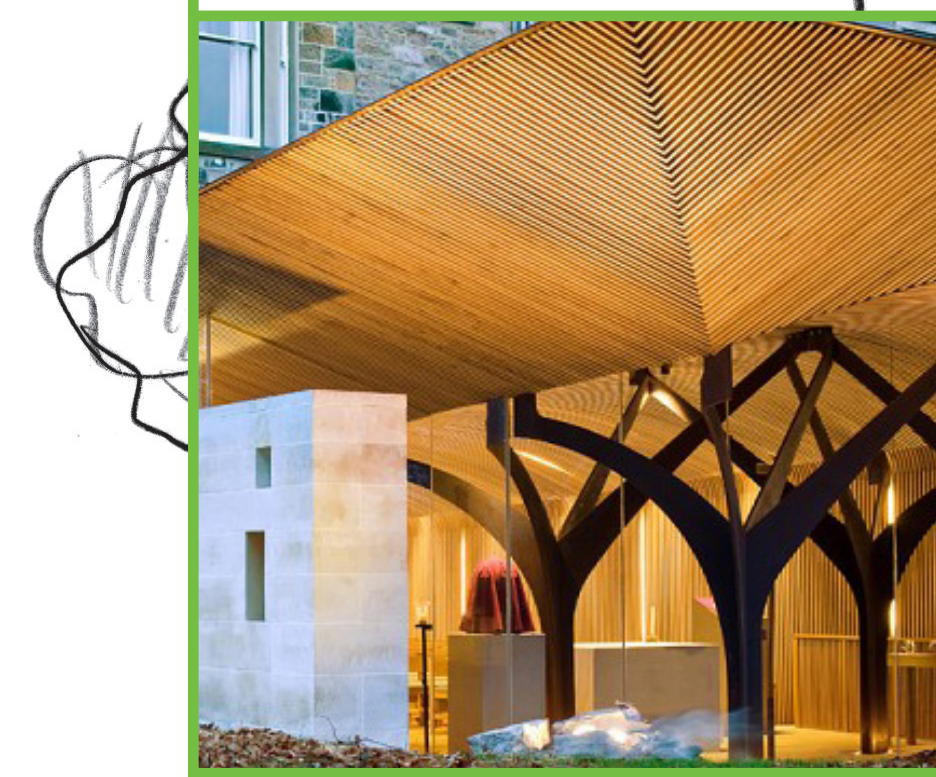
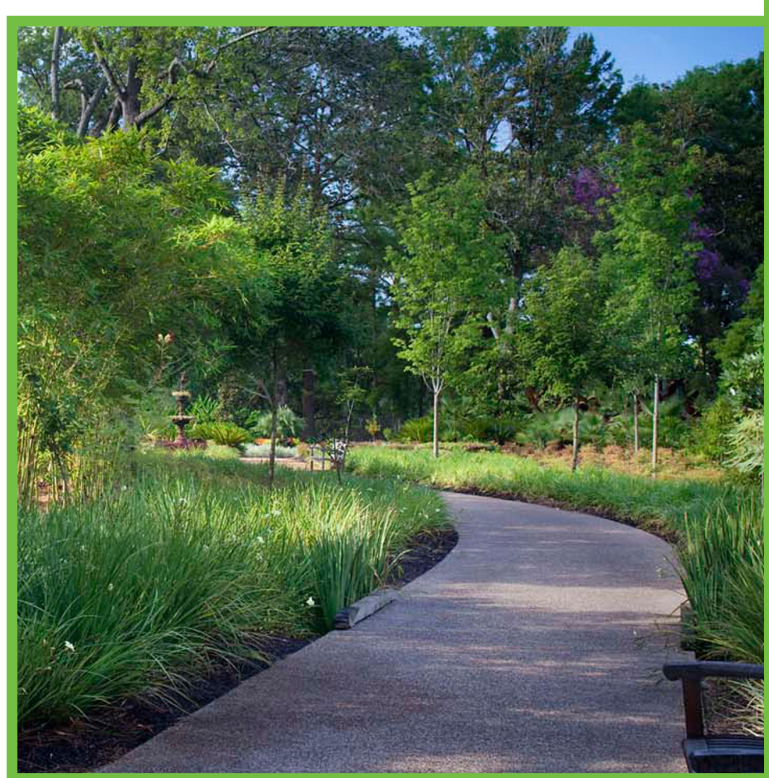
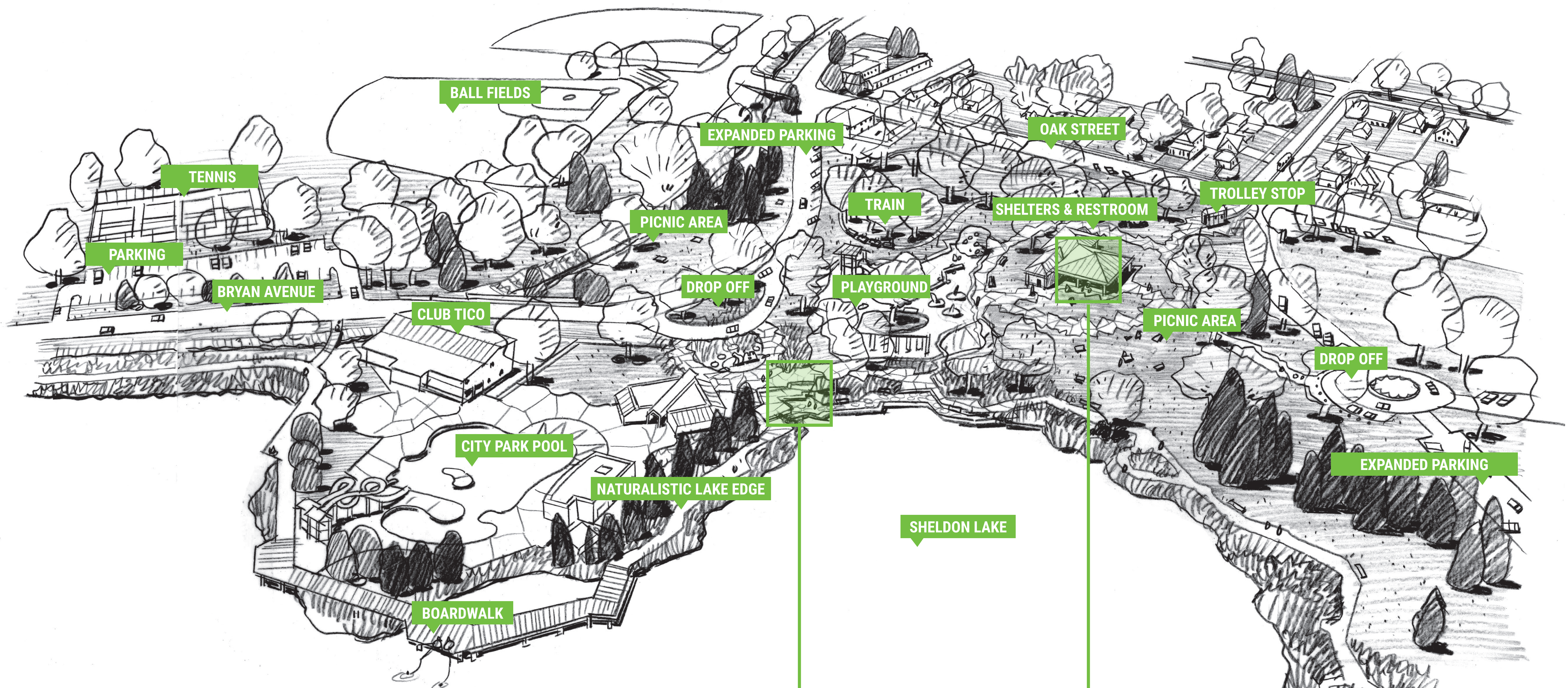
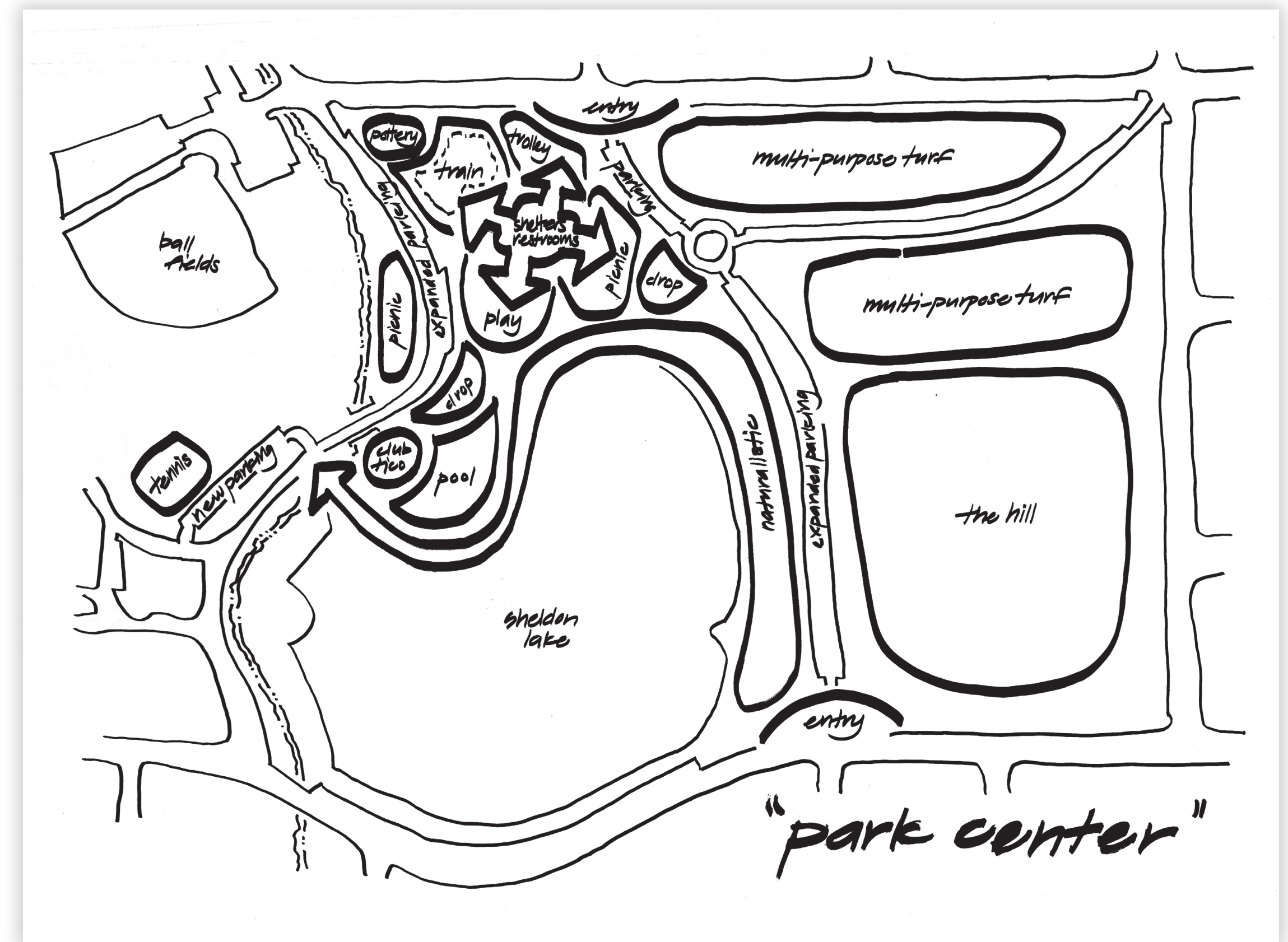


CITY PARK
TOMORROW

City of
Fort Collins

CITY PARK PARK CENTER

- A large iconic shelter and restroom, enveloped by an open green and shade trees create a signature hub for the park. A network of paths connects the Park Center to the playground, train, trolley stop, and picnic areas.
- A partial closure of City Park Drive improves pedestrian safety and provides unimpeded access to the north shore of Sheldon Lake.
- Diagonal parking along Bryan Drive provides convenient parking and safe pedestrian access to the pool
- A network of crushed stone paths, intimate boardwalks, and rich naturalistic plantings encompass the north edge of Sheldon Lake
- The tennis courts are relocated to the west side of the park to provide space for an improved pedestrian entry into the north side of the park. An off street parking lot adjacent to the tennis courts provides safer parking along Bryan



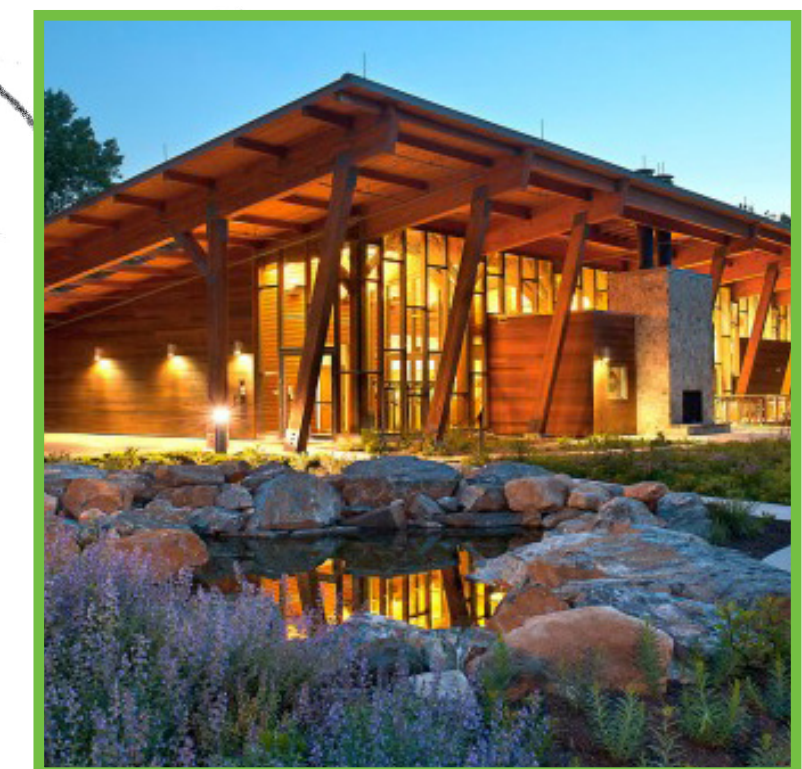
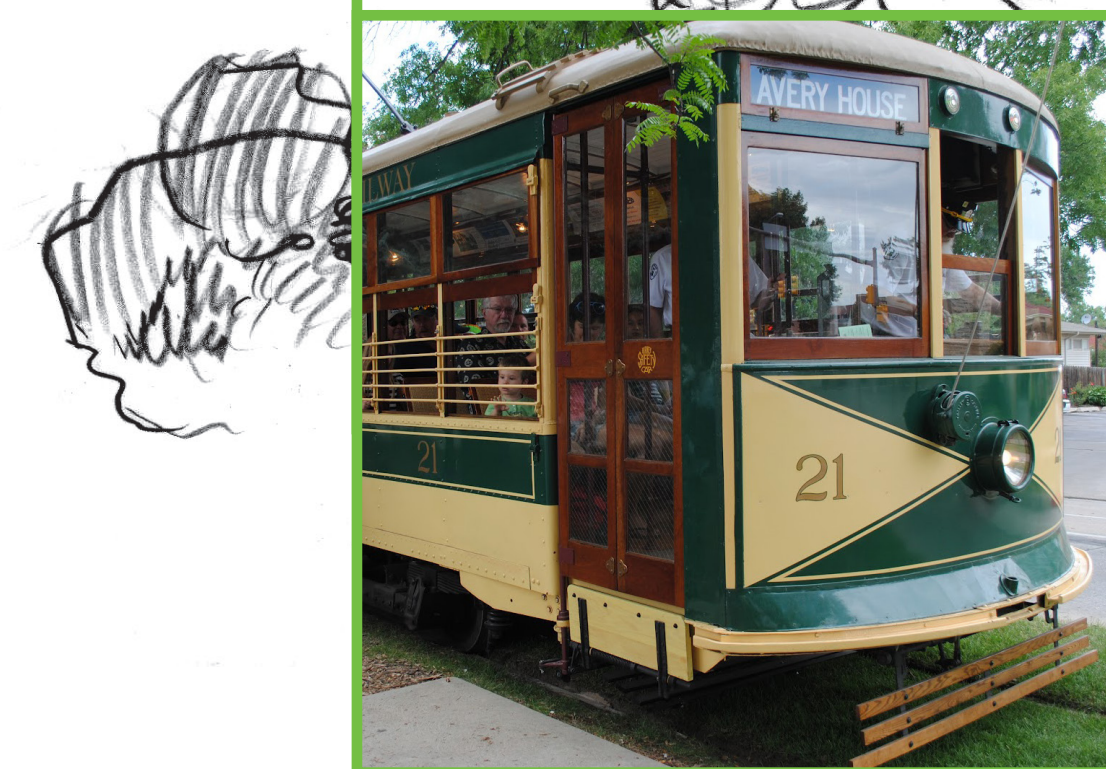
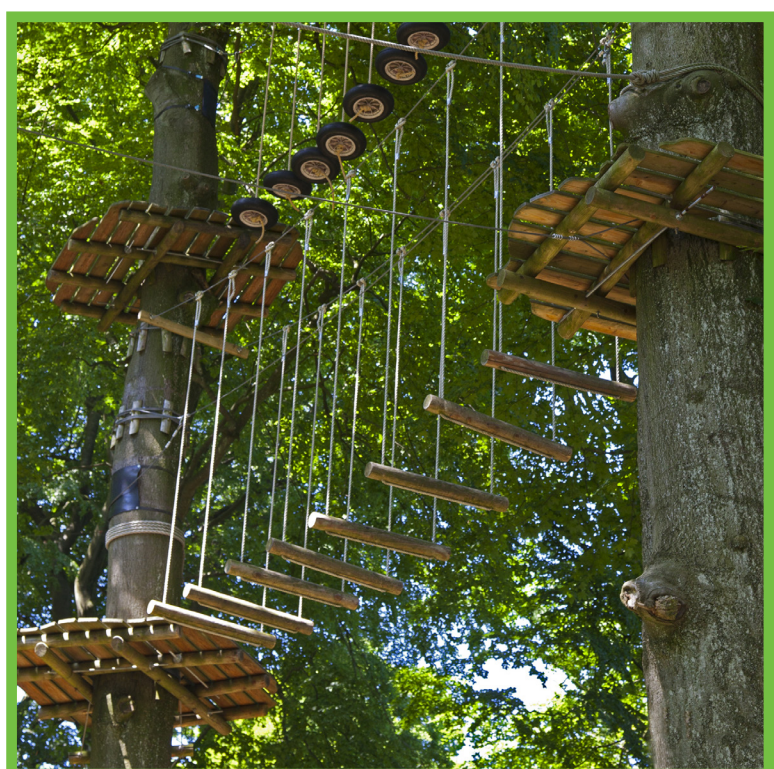
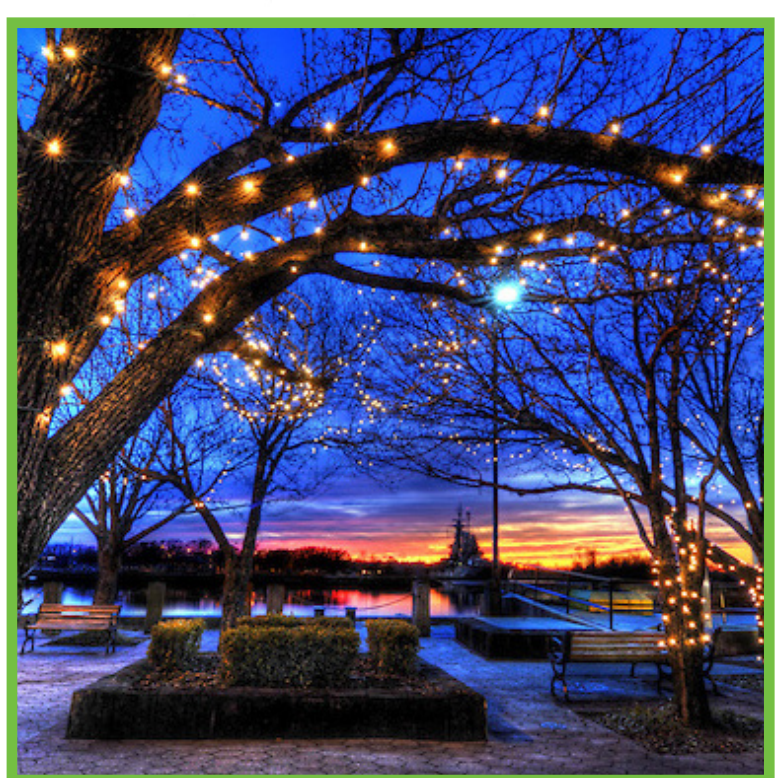
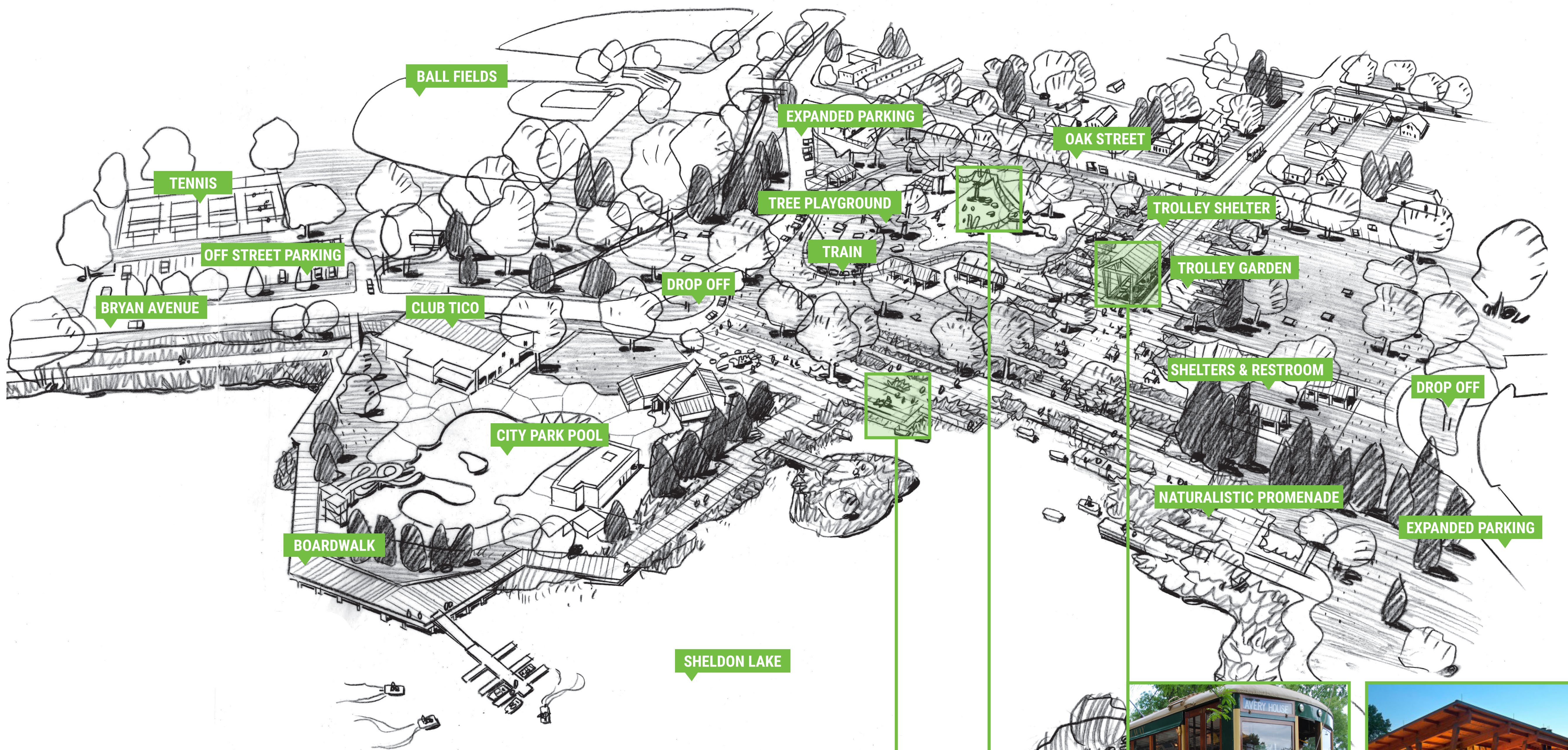
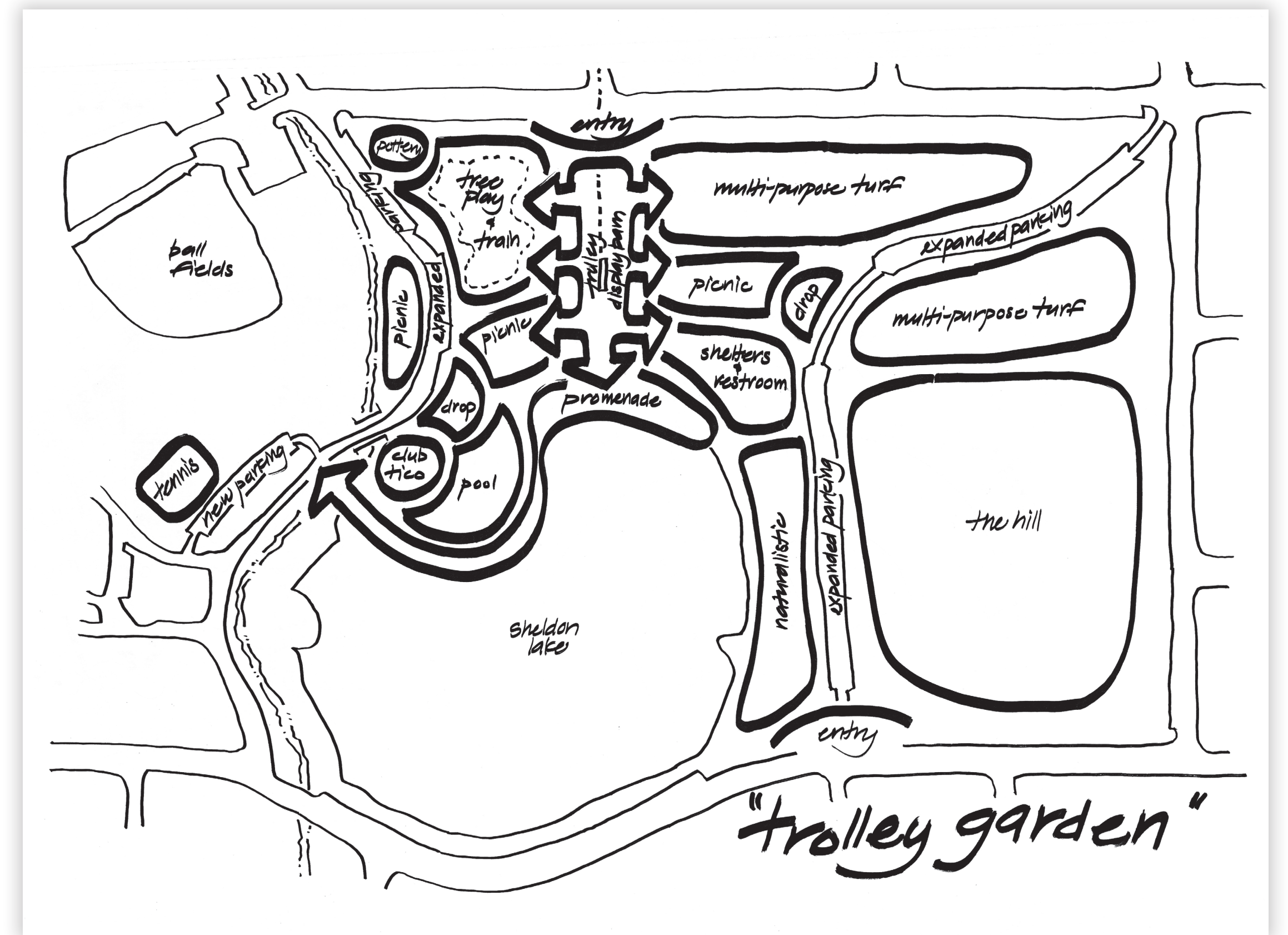


CITY PARK
TOMORROW

City of
Fort Collins

CITY PARK TROLLEY GARDEN

- The trolley tracks are extended into the park from the north, providing improved trolley access within the park. A new trolley stop and trolley shelter provides a place for the trolley to be prominently displayed year round, bringing fresh exposure and prominence to a Fort Collins treasure.
- Rich plantings, seating areas, shade trees and walks envelop the trolley building, creating a memorable garden destination for park visitors.
- The tennis courts are relocated to the west side of the park to provide for the trolley track extension into the park, and provide for an enhanced pedestrian entry along the north edge of the park.
- A naturalistic promenade with rich plantings provides improved pedestrian access and a variety of seating areas along the north shore line of Sheldon Lake.
- A partial closure of City Park Drive and Sheldon Drive improve safety within the park and creates open, unimpeded pedestrian connectivity between the Trolley Gardens and promenade.
- Large, towering oak trees along the north side of the park provide a unique environment for a playground among the trees.





CITY PARK
TOMORROW

City of
Fort Collins

CITY PARK LAKE SHORE

- A partial closure of Bryan Drive and City Park Drive moved north improves safety in the park by reducing pedestrian and vehicle conflicts near City Park Pool, and provides park visitors unimpeded access between the playground, group shelters and Sheldon Lake Boardwalk.
- The Sheldon Lake Boardwalk provides a destination for park visitors to walk, relax and reflect at the shores of City Park's most significant and historic amenity – Sheldon Lake.
- The Sheldon Lake Boardwalk includes a variety of seating areas, night lighting, and improved access to the lake.
- The boardwalk gracefully links the pool, playground, shelters, and restrooms.
- A roundabout organizes traffic movement through the park. Sheldon Drive provides one way access from the north and south, preventing through access between Oak and Mulberry Streets.
- Expanded parking along Sheldon Drive provides ample and convenient parking.

