



12-17-18



# Trailhead Neighborhood Park Community Meeting



## Identify

basic needs to be included in the park

## Select

preferences for park elements

## Listen

to comments and suggestions

## Develop

a sense of ownership and anticipation for the project



Studies show that

**PARKS ARE  
ESSENTIAL**

to the physical, social,  
environmental and  
economic health of a  
community







Across all age groups,  
**DID YOU KNOW?**  
that access to parks:

- Reduces Stress
- Reduces Risk of Depression
- Improves Mental Health and Well-being





Across all age groups,  
**DID YOU KNOW?**

access to parks is  
associated with:

- Lower Body Mass Index
- Reduced Risk of Obesity





## DID YOU KNOW?

Children's use of neighborhood parks increases by 400% when parks are closer to home.



## DID YOU KNOW?

Nearly 3/4 of citizens say that parks, trails and open space are an essential component of American health care.







## DID YOU KNOW?

A city of well-connected green spaces is more resilient to extreme environmental events, such as heat waves and extreme rainfall.




## DID YOU KNOW?

City parks and other urban natural areas produce benefits with estimated values of up to \$6.8 billion USD annually.







**1 in 3 Americans** don't have  
a park within a 10-minute walk  
(or half-mile) of home.

Source: The Trust for Public Land



## PARK PLANNING & DEVELOPMENT

- Seven full time staff
- Licensed Professionals: landscape architects, engineers
- Over twenty active projects: Three currently under construction



**NEW**  
COMMUNITY PARKS



**NEW**  
NEIGHBORHOOD PARKS



**PARK REFRESH**  
PROJECTS

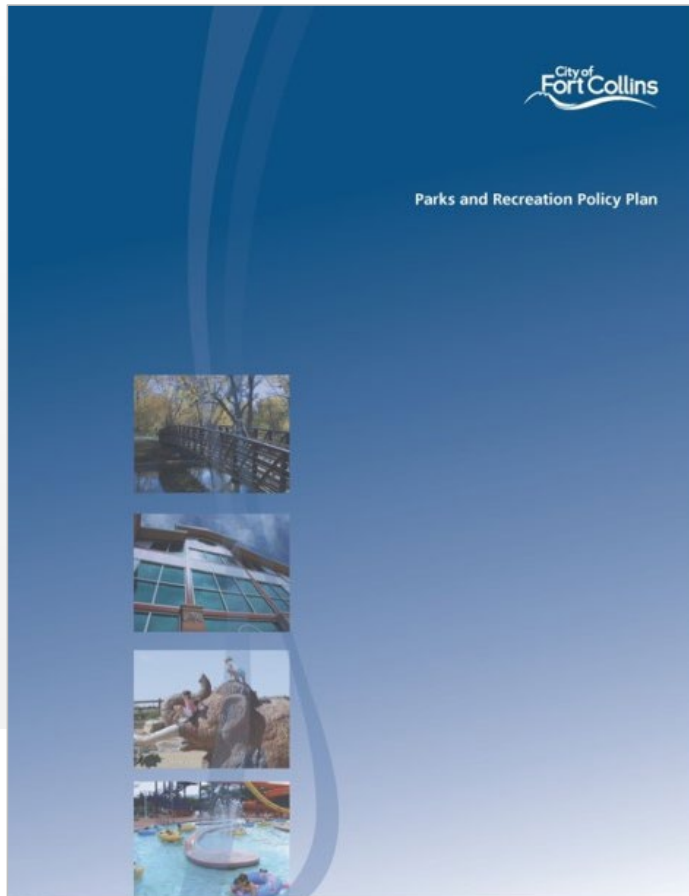


**SPECIAL**  
PROJECTS

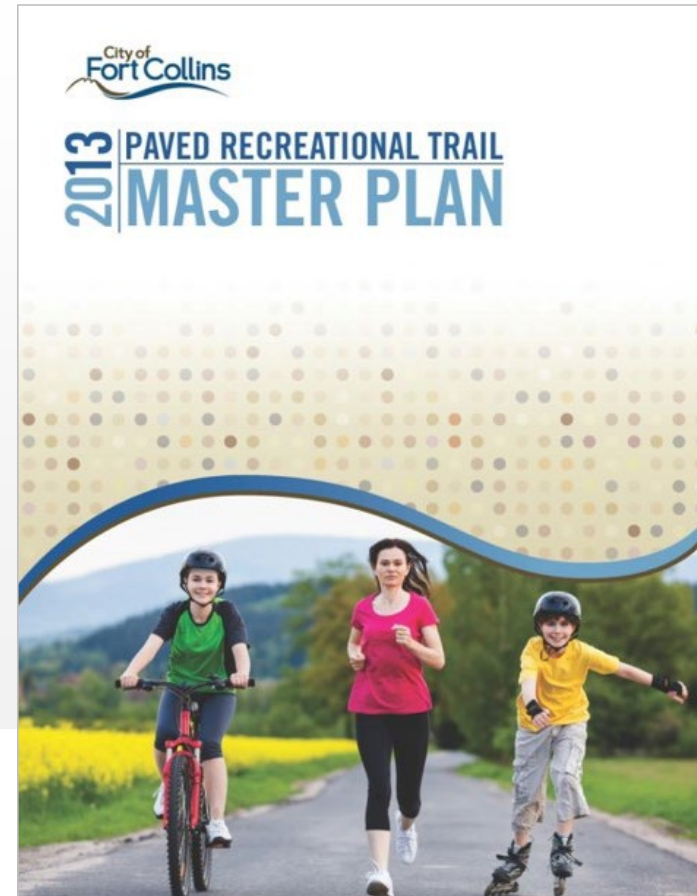


**NEW**  
PAVED TRAILS





PARKS & RECREATION  
POLICY PLAN



2013 PAVED RECREATIONAL TRAIL  
MASTER PLAN



## Quantitative and Qualitative Approach

- Even park distribution
- 1 community park approximately every 4 square miles
- 1 neighborhood park approximately every 1 square mile
- Equal access to park amenities
- Quantity of recreation components based on population
- Impact fee requires new parks to be comparable to other fee funded parks





## Community Parks

- Large Recreation Facilities
- Small/Specialty Recreation Facilities
- Dog Park
- Destination Playground
- Multi-Purpose Fields
- Passive Green Space
- Restrooms
- Shelters
- Walks/Trails
- Raw Water Irrigation Pond
- Naturalistic Features
- Unique Elements
- Parking/Drives
- 80-100+ Acres







## Neighborhood Parks

- Multi-purpose Green/Fields
- 1 Small/Specialty Recreation Facility
- 1 Restroom
- 1 Shelter
- Playground
- Walks
- Raw Water Irrigation Pond (if feasible)
- 5-10+ Acres



Avery  
Neighborhood Park



Registry Ridge  
Neighborhood Park







## Appropriate

Each park is developed according to its role in the overall park system

## Sustainable

Parks are durable and sustainable utilizing green practices

## Unique

Special features of each site are utilized and built upon

## Balanced

Balance of active and passive recreation within each park

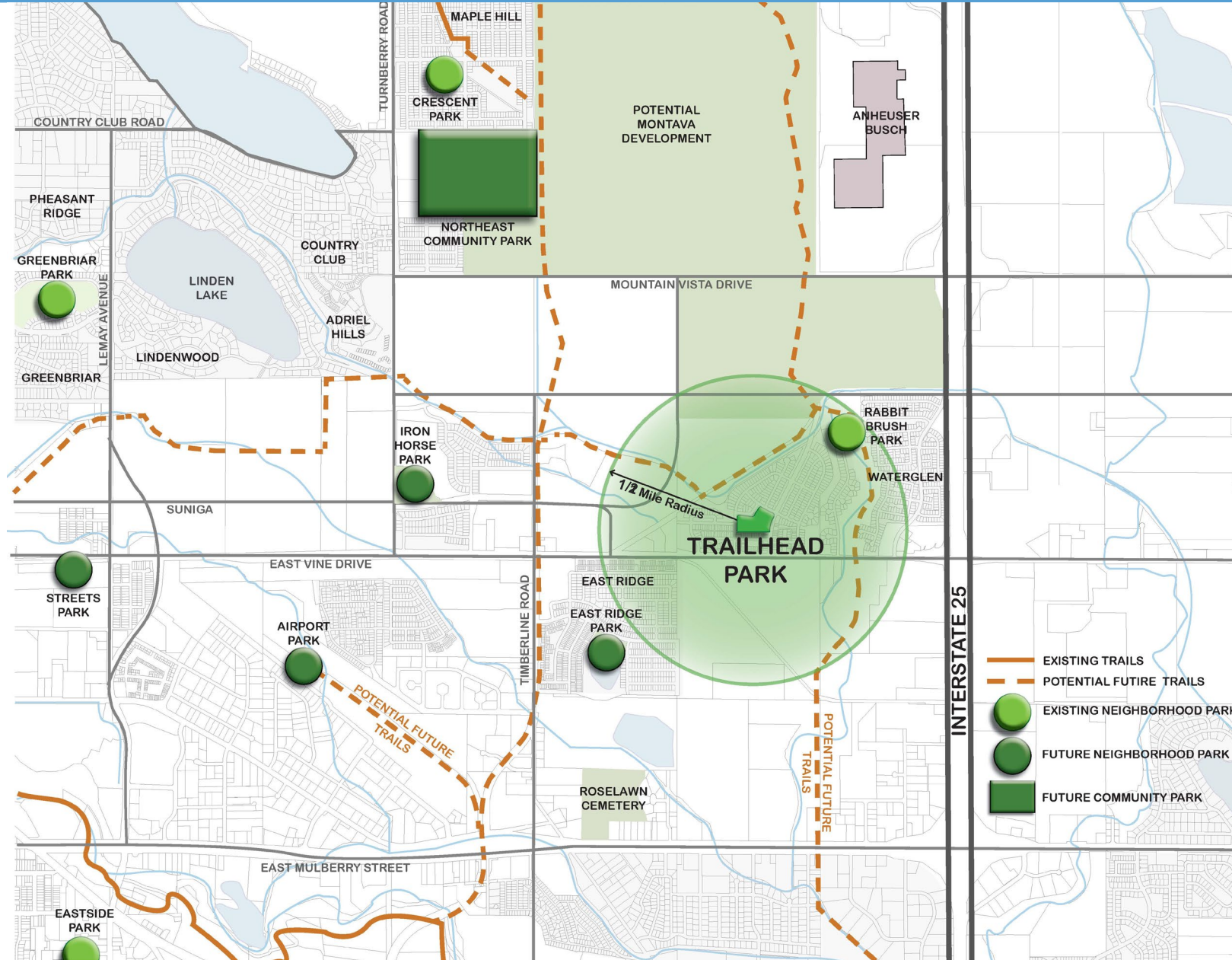
## Accessible

Meet or exceed the requirements of the Americans with Disability Act

## Connected

The park is connected and accessible to the community







PURCHASED THE LAND

WATER SERVICES AGREEMENT

LAND SWAP/PARK BOUNDARY  
ADJUSTMENT











EXISTING MATURE TREES









Existing HOA Open Space Corridors to the Park





Existing Pedestrian Connections to the Park





“PATHS” TO THE PARK  
EXISTING HOA OPEN SPACE  
CORRIDORS TO THE PARK





"PATHS" TO THE PARK  
EXISTING SIDEWALKS AND BIKE  
LANES FUNNEL INTO THE PARK





**“PATHS” TO THE PARK**  
**EXISTING HOA OPEN SPACE CORRIDORS**  
**AND SIDEWALKS TO THE PARK**





Potential Trail Access to Future Regional Trail





TRAIL ACCESS TO FUTURE COMMUNITY  
PARK AND EXISTING TRAIL SYSTEM











**MOUNTAIN VIEWS**







## DESIGN

- Identify Opportunities  
DECEMBER 17, 2018
- Present Alternatives  
SPRING 2019
- Review Final Concept  
SUMMER 2019



## BUILD

- Construction Begins  
WINTER 2019



## OPEN

- Park Opens  
FALL 2020



## YOUR INPUT!

- Please fill out the comment card
- Red dot green dot exercise

### COMMENT CARD

### TRAILHEAD PARK



Name and email \_\_\_\_\_

Address \_\_\_\_\_

How do you plan to use the park?

---

---

---

---

---

If you could choose, what would be your top priority items to include in the park?

---

---

---

---

---

(see reverse side for additional comments)



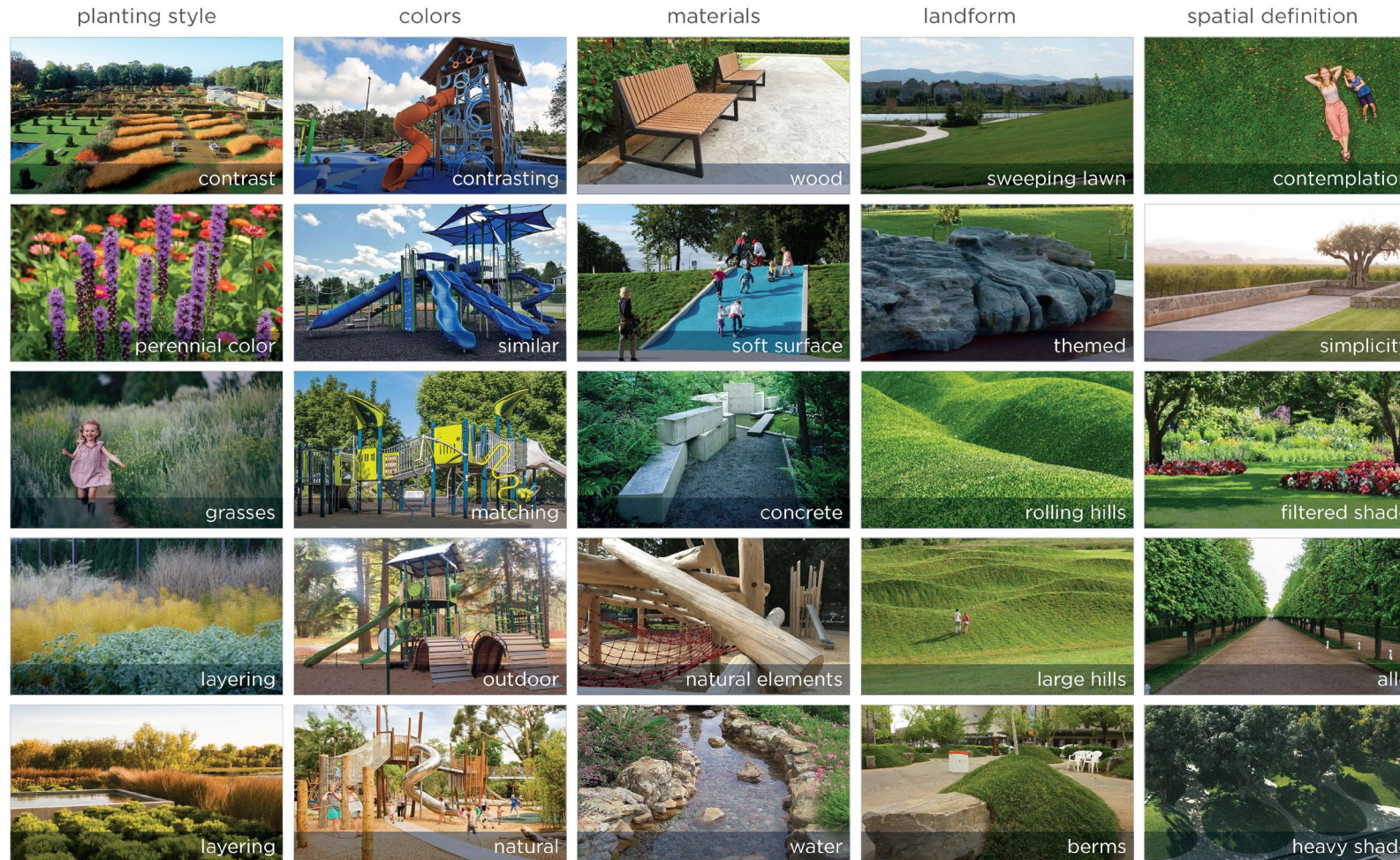
## PARK ACTIVITIES



TRAILHEAD PARK



## PARK CHARACTER



# TRAILHEAD PARK



## PLAY ENVIRONMENTS





## GATHER INPUT, SUMMARIZE AND PREPARE ALTERNATIVES

- Gather input through comment cards, conversations, and the red dot green dot exercise
- Summarize input
- Prepare Design Alternatives and Park Program for the next Neighborhood Meeting





