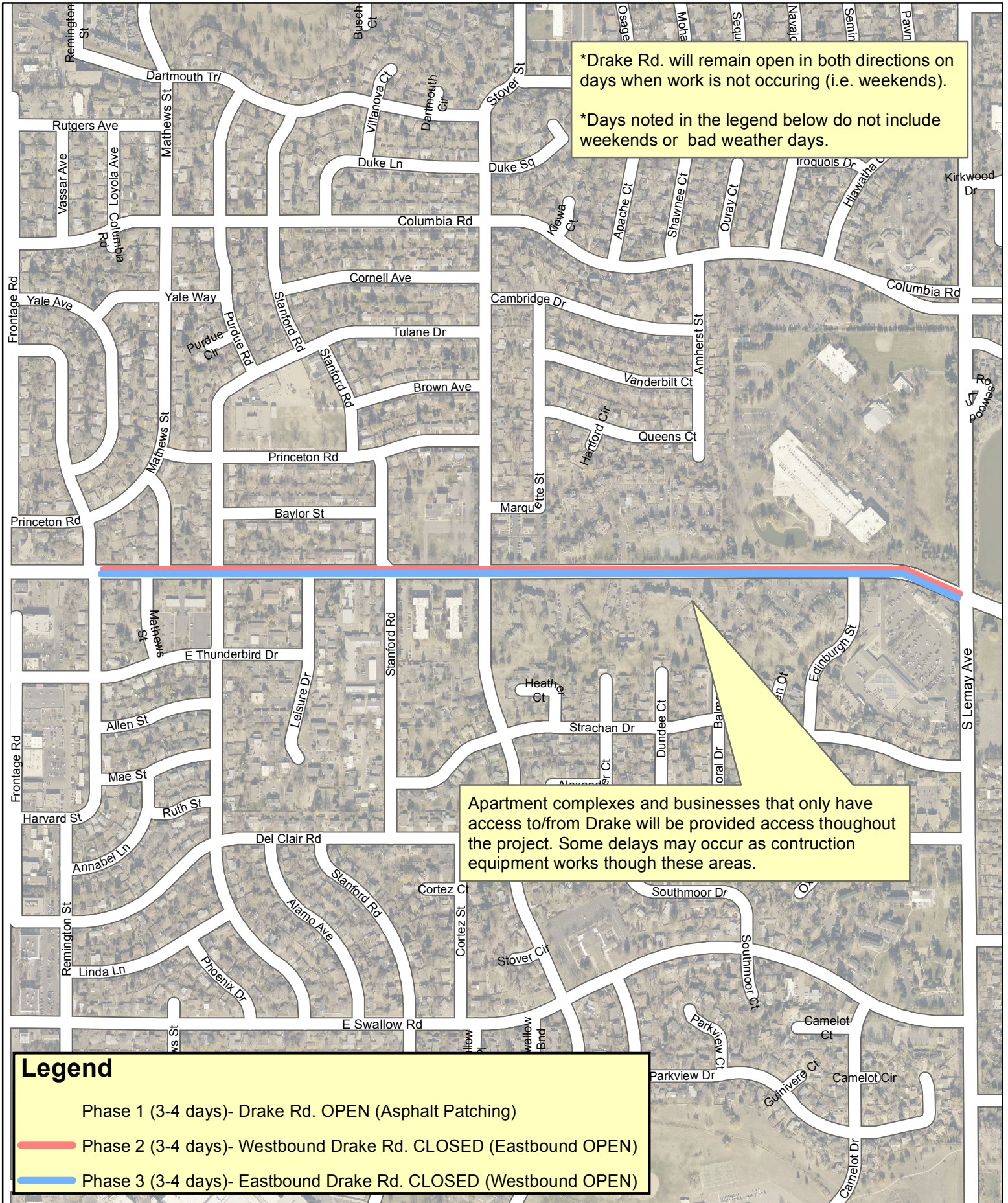


Drake Rd. (Lemay Ave. to Harvard St.) Road Repaving



*Drake Rd. will remain open in both directions on days when work is not occurring (i.e. weekends).
 *Days noted in the legend below do not include weekends or bad weather days.

Apartment complexes and businesses that only have access to/from Drake will be provided access throughout the project. Some delays may occur as construction equipment works through these areas.

- Legend**
- Phase 1 (3-4 days)- Drake Rd. OPEN (Asphalt Patching)
 - Phase 2 (3-4 days)- Westbound Drake Rd. CLOSED (Eastbound OPEN)
 - Phase 3 (3-4 days)- Eastbound Drake Rd. CLOSED (Westbound OPEN)