

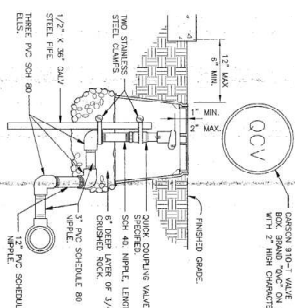
# IRRIGATION SCHEDULE

SYMBOL	MANUFACTURER/DESCRIPTION	QTY
①	1" X 1/2" X 100" PHYS.-OCY	40
②	1" X 1/2" X 100" PHYS.-OCY	40
③	1" X 1/2" X 100" PHYS.-OCY	40
④	1" X 1/2" X 100" PHYS.-OCY	40
⑤	1" X 1/2" X 100" PHYS.-OCY	40
⑥	1" X 1/2" X 100" PHYS.-OCY	40
⑦	1" X 1/2" X 100" PHYS.-OCY	40
⑧	1" X 1/2" X 100" PHYS.-OCY	40
⑨	1" X 1/2" X 100" PHYS.-OCY	40
⑩	1" X 1/2" X 100" PHYS.-OCY	40
⑪	1" X 1/2" X 100" PHYS.-OCY	40
⑫	1" X 1/2" X 100" PHYS.-OCY	40
⑬	1" X 1/2" X 100" PHYS.-OCY	40
⑭	1" X 1/2" X 100" PHYS.-OCY	40
⑮	1" X 1/2" X 100" PHYS.-OCY	40
⑯	1" X 1/2" X 100" PHYS.-OCY	40
⑰	1" X 1/2" X 100" PHYS.-OCY	40
⑱	1" X 1/2" X 100" PHYS.-OCY	40
⑲	1" X 1/2" X 100" PHYS.-OCY	40
⑳	1" X 1/2" X 100" PHYS.-OCY	40
㉑	1" X 1/2" X 100" PHYS.-OCY	40
㉒	1" X 1/2" X 100" PHYS.-OCY	40
㉓	1" X 1/2" X 100" PHYS.-OCY	40
㉔	1" X 1/2" X 100" PHYS.-OCY	40
㉕	1" X 1/2" X 100" PHYS.-OCY	40
㉖	1" X 1/2" X 100" PHYS.-OCY	40
㉗	1" X 1/2" X 100" PHYS.-OCY	40
㉘	1" X 1/2" X 100" PHYS.-OCY	40
㉙	1" X 1/2" X 100" PHYS.-OCY	40
㉚	1" X 1/2" X 100" PHYS.-OCY	40
㉛	1" X 1/2" X 100" PHYS.-OCY	40
㉜	1" X 1/2" X 100" PHYS.-OCY	40
㉝	1" X 1/2" X 100" PHYS.-OCY	40
㉞	1" X 1/2" X 100" PHYS.-OCY	40
㉟	1" X 1/2" X 100" PHYS.-OCY	40
㊱	1" X 1/2" X 100" PHYS.-OCY	40
㊲	1" X 1/2" X 100" PHYS.-OCY	40
㊳	1" X 1/2" X 100" PHYS.-OCY	40
㊴	1" X 1/2" X 100" PHYS.-OCY	40
㊵	1" X 1/2" X 100" PHYS.-OCY	40
㊶	1" X 1/2" X 100" PHYS.-OCY	40
㊷	1" X 1/2" X 100" PHYS.-OCY	40
㊸	1" X 1/2" X 100" PHYS.-OCY	40
㊹	1" X 1/2" X 100" PHYS.-OCY	40
㊺	1" X 1/2" X 100" PHYS.-OCY	40
㊻	1" X 1/2" X 100" PHYS.-OCY	40
㊼	1" X 1/2" X 100" PHYS.-OCY	40
㊽	1" X 1/2" X 100" PHYS.-OCY	40
㊾	1" X 1/2" X 100" PHYS.-OCY	40
㊿	1" X 1/2" X 100" PHYS.-OCY	40

## REFERENCE NOTES SCHEDULE

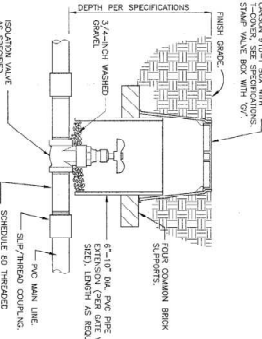
- CONTRACTOR SHALL FIELD LOCATE EXISTING 34\"/>

REV.	COMMENT	DATE



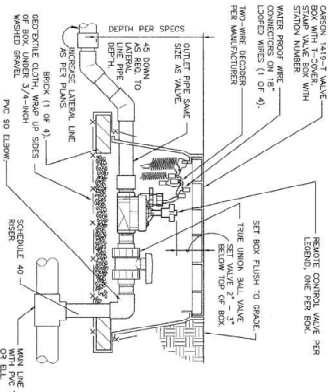
1 QUICK COUPLING VALVE IN BOX  
1 1/2" - 1'-0"

328405.43-02



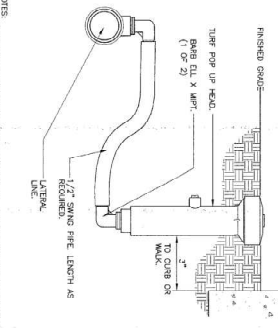
2 ISOLATION GATE VALVE  
1 1/2" - 1'-0"

328406.23-01



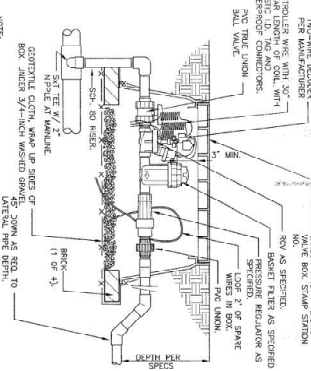
3 REMOTE CONTROL TURF VALVE WIDE-DECK  
1 1/2" - 1'-0"

328404.13-04



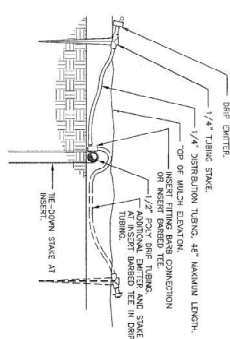
4 6-INCH POP-UP SPRAY  
3" - 1'-0"

328404.13-03



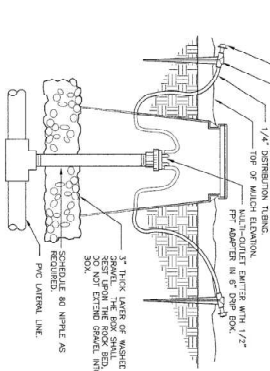
5 1\"/>

328413.79-35



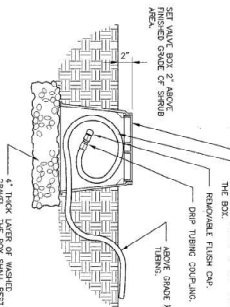
6 DRIP EMITTER AT 1/4\"/>

328413.13-13



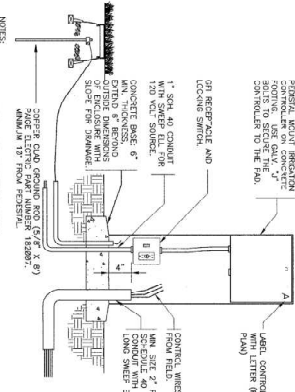
7 DRIP MULTI-OUTLET ON PVC RISEN IN BOX  
3" - 1'-0"

328414.16-15



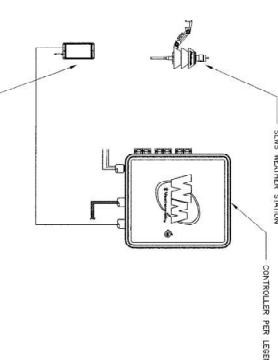
8 DRIP FLUSH CAP ASSEMBLY  
1 1/2" - 1'-0"

328414.08-08



9 PEDESTAL MOUNT CONTROLLER  
1" - 1'-0"

328405.16-03



10 WEATHERMATIC SETUP  
N.T.S.

32 8406 16-22

### INSTALLATION GENERAL NOTES

1. DRIP EMITTERS SHALL BE INSTALLED AT THE SPECIFIED SPACING AND DEPTH. THE EMITTERS SHALL BE PROTECTED BY A 1/4" THICK STAKE OR 1/4" THICK TUBING. THE EMITTERS SHALL BE PROTECTED BY A 1/4" THICK STAKE OR 1/4" THICK TUBING. THE EMITTERS SHALL BE PROTECTED BY A 1/4" THICK STAKE OR 1/4" THICK TUBING.
2. DRIP EMITTERS SHALL BE INSTALLED AT THE SPECIFIED SPACING AND DEPTH. THE EMITTERS SHALL BE PROTECTED BY A 1/4" THICK STAKE OR 1/4" THICK TUBING. THE EMITTERS SHALL BE PROTECTED BY A 1/4" THICK STAKE OR 1/4" THICK TUBING.
3. DRIP EMITTERS SHALL BE INSTALLED AT THE SPECIFIED SPACING AND DEPTH. THE EMITTERS SHALL BE PROTECTED BY A 1/4" THICK STAKE OR 1/4" THICK TUBING. THE EMITTERS SHALL BE PROTECTED BY A 1/4" THICK STAKE OR 1/4" THICK TUBING.
4. DRIP EMITTERS SHALL BE INSTALLED AT THE SPECIFIED SPACING AND DEPTH. THE EMITTERS SHALL BE PROTECTED BY A 1/4" THICK STAKE OR 1/4" THICK TUBING. THE EMITTERS SHALL BE PROTECTED BY A 1/4" THICK STAKE OR 1/4" THICK TUBING.
5. DRIP EMITTERS SHALL BE INSTALLED AT THE SPECIFIED SPACING AND DEPTH. THE EMITTERS SHALL BE PROTECTED BY A 1/4" THICK STAKE OR 1/4" THICK TUBING. THE EMITTERS SHALL BE PROTECTED BY A 1/4" THICK STAKE OR 1/4" THICK TUBING.
6. DRIP EMITTERS SHALL BE INSTALLED AT THE SPECIFIED SPACING AND DEPTH. THE EMITTERS SHALL BE PROTECTED BY A 1/4" THICK STAKE OR 1/4" THICK TUBING. THE EMITTERS SHALL BE PROTECTED BY A 1/4" THICK STAKE OR 1/4" THICK TUBING.
7. DRIP EMITTERS SHALL BE INSTALLED AT THE SPECIFIED SPACING AND DEPTH. THE EMITTERS SHALL BE PROTECTED BY A 1/4" THICK STAKE OR 1/4" THICK TUBING. THE EMITTERS SHALL BE PROTECTED BY A 1/4" THICK STAKE OR 1/4" THICK TUBING.
8. DRIP EMITTERS SHALL BE INSTALLED AT THE SPECIFIED SPACING AND DEPTH. THE EMITTERS SHALL BE PROTECTED BY A 1/4" THICK STAKE OR 1/4" THICK TUBING. THE EMITTERS SHALL BE PROTECTED BY A 1/4" THICK STAKE OR 1/4" THICK TUBING.
9. DRIP EMITTERS SHALL BE INSTALLED AT THE SPECIFIED SPACING AND DEPTH. THE EMITTERS SHALL BE PROTECTED BY A 1/4" THICK STAKE OR 1/4" THICK TUBING. THE EMITTERS SHALL BE PROTECTED BY A 1/4" THICK STAKE OR 1/4" THICK TUBING.
10. DRIP EMITTERS SHALL BE INSTALLED AT THE SPECIFIED SPACING AND DEPTH. THE EMITTERS SHALL BE PROTECTED BY A 1/4" THICK STAKE OR 1/4" THICK TUBING. THE EMITTERS SHALL BE PROTECTED BY A 1/4" THICK STAKE OR 1/4" THICK TUBING.

REV.	COMMENT	DATE