

# Soapstone Prairie Natural Area

## Mid to Late August Plants



### Blanket flower

*Gaillardia aristata* (Sunflower family) native

The season for these is about finished but those remaining are delightful

### Prairie sunflower

*Helianthus pumilus* (Sunflower family)  
native

The most common sunflower blooming this time of year. The foliage has small bristly hairs that make leaves and stems feel like sandpaper. Seeds were a favorite food with some Native American tribes.



### Annual sunflower

*Helianthus annuus* (Sunflower family) native

These are tall, stout plants. Native Americans used fibers from the stems and made yellow dye from flowers. The seeds feed birds and yield oil for fuel and cooking.



**White prairie clover** *Dalea candida*  
(Pea family)  
native

These are drought and deer resistant and will grow in poor soils. Like other members of this family they can fix Nitrogen from the air and so help provide soil fertility for themselves.



**Dotted  
gayfeather**

*Liatrix punctata*  
(Sunflower family)  
native

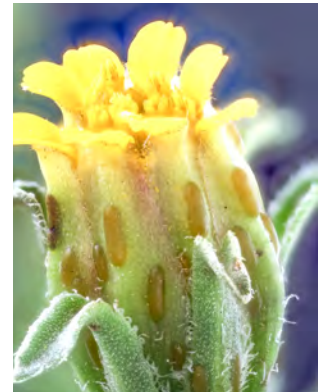
A bright purple note in  
a symphony of yellow  
flowers; pollinated by  
bees and butterflies.



**Fetid marigold**

*Dyssodia papposa* (Sunflower family) native

Just beginning to bloom, The flowers are very small  
and inconspicuous with an unpleasant odor. This  
clump is on the north edge  
of the north parking lot.



**Narrowleaf four  
o'clock**

*Mirabilis linearis* (Four  
o'clock family) native

These are just coming  
into bloom and are  
easily overlooked  
because the flowers are  
small and the stems are  
spindly. Several plants  
over-hang the north  
side of Lindenmeier  
trail.



**Broomlike ragwort**

*Senecio spartioides* (Sunflower family) native

These tend to form fairly large and rather  
compact clumps. A dye plant for Native  
Americans. Toxic to livestock.



**Rubber rabbitbrush**

*Ericameria nauseosa* (Sunflower family)  
native

These rounded mounds of green  
common along roads all over the West  
look like they belong in an Impressionist  
painting. They are starting to bloom with  
bright yellow flowers.

These sheets are also available online at : [fcgov.com/natural\\_areas](http://fcgov.com/natural_areas) (then go to "native plants" and to "wildflowers in Natural Areas" -> [wildflower handouts for Soapstone Prairie](#))