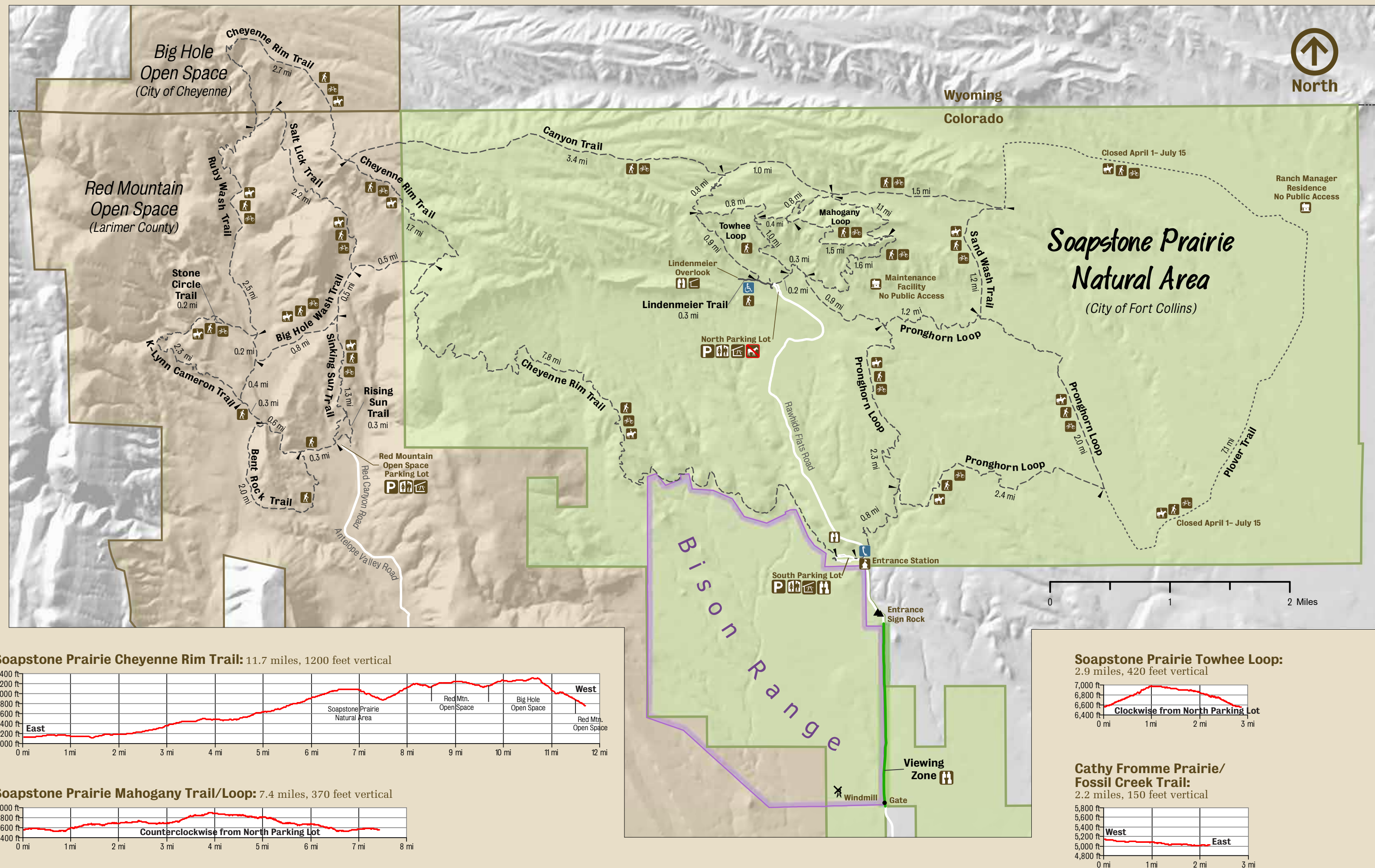


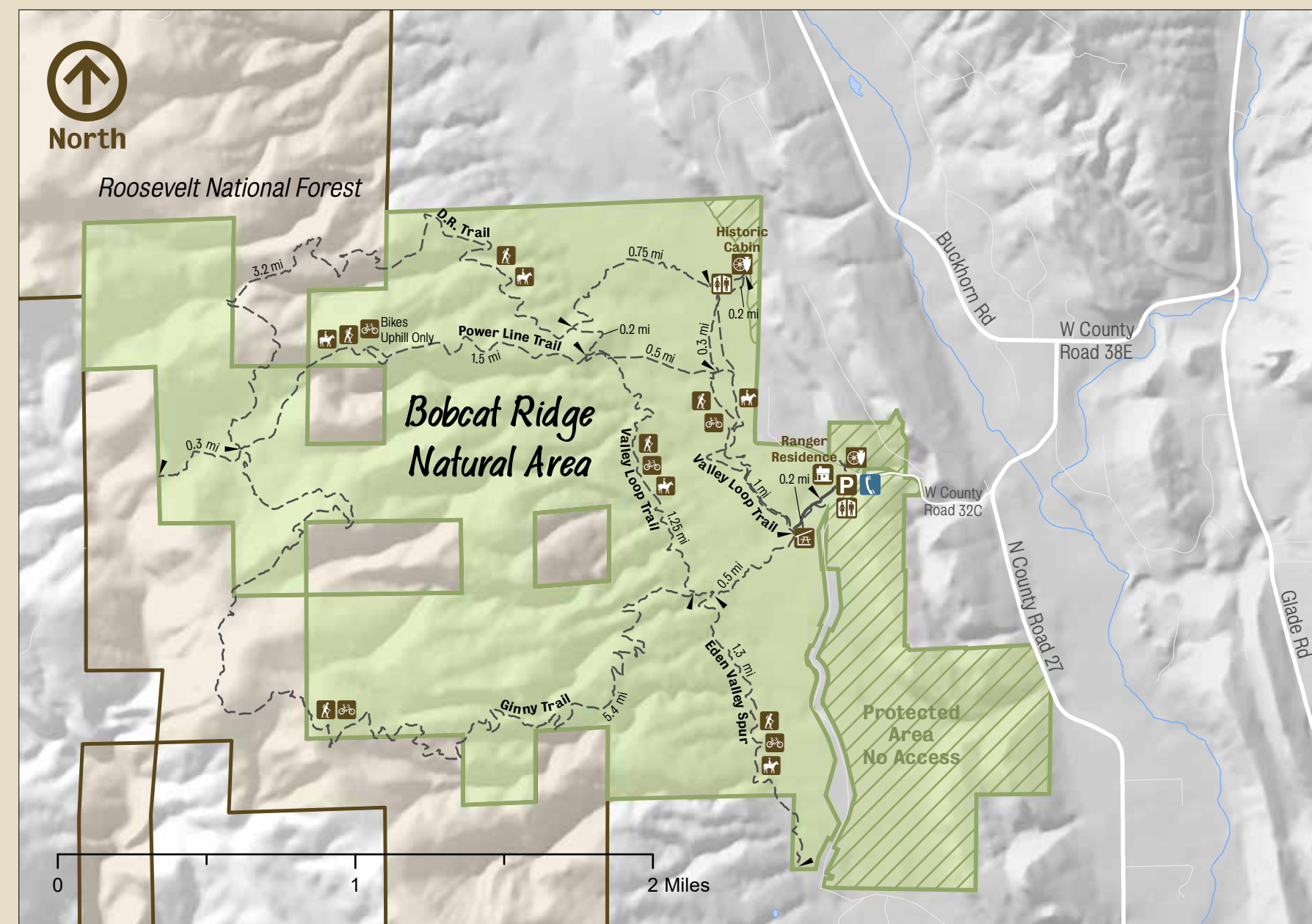
Soapstone Prairie Natural Area

DIRECTIONS: From Fort Collins, travel north on State Hwy 1 / Terry Lake Road. Turn left (towards Waverly) on County Road 15. Travel north and turn right onto Rawhide Flats Road and take it to the entrance station.

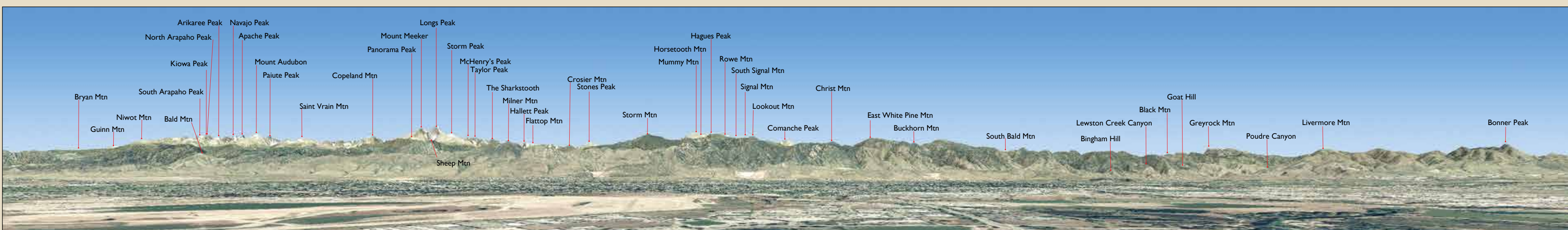


Bobcat Ridge Natural Area

DIRECTIONS: From Fort Collins, take Harmony Road / CR 38E west to Masonville. Turn south on CR 27 and west on CR W32C to the parking lot.



Fort Collins Peak Finder: The View From Cottonwood Hollow Natural Area



KNOW BEFORE YOU GO

Natural areas are popular! When the parking lots are full, the carrying capacity has been reached. Go to an alternate site or come back another time. Weekends and holidays are busiest. Do not park anywhere other than in designated spots.

Check Here First:

- fcgov.com/trails/status
- NoCoTrailReport.org
- [FCNaturalAreas](https://www.facebook.com/FCNaturalAreas)
- [FCNaturalAreas](https://www.instagram.com/FCNaturalAreas)

City and Larimer County Trail Closures: NoCoTrailReport.org

Stewardship Needed
Natural areas can be loved to death. Show your care for these treasures by following regulations which protect you and the natural areas.

- ✓ Keep dogs on-leash and pack out dog waste (at sites where dogs are allowed).
- ✓ Leave no trace by removing trash and food scraps.
- ✓ Amplified music is not permitted. It disturbs fellow visitors and wildlife. But please keep one earbud out so you are aware of your surroundings.

Why Closures?

Natural areas are closed due to wet and muddy conditions on the trails. Muddy trails leave visitors with no good choices: going around the mud widens the trail and going through the mud damages the trail. Please respect the closures and try the paved trails instead.



NATURAL AREA	RECREATION OPPORTUNITIES
Arapaho Bend*	[P] [H] [B] [Horseback Riding] [Dogs on Leash] [Fishing] [Interpretive Signs] [Picnic Facilities] [Restrooms] [Designed for kids]
Bobcat Ridge — open down to dusk	[P] [H] [B] [Horseback Riding] [Dogs on Leash] [Fishing] [Interpretive Signs] [Picnic Facilities] [Restrooms] [Designed for kids]
Butterfly Woods	[P] [H] [B] [Horseback Riding] [Dogs on Leash] [Fishing] [Interpretive Signs] [Picnic Facilities] [Restrooms] [Designed for kids]
Cathy Fromme Prairie	[P] [H] [B] [Horseback Riding] [Dogs on Leash] [Fishing] [Interpretive Signs] [Picnic Facilities] [Restrooms] [Designed for kids]
Cattail Chorus	[P] [H] [B] [Horseback Riding] [Dogs on Leash] [Fishing] [Interpretive Signs] [Picnic Facilities] [Restrooms] [Designed for kids]
Colina Mariposa	[P] [H] [B] [Horseback Riding] [Dogs on Leash] [Fishing] [Interpretive Signs] [Picnic Facilities] [Restrooms] [Designed for kids]
Cottonwood Hollow	[P] [H] [B] [Horseback Riding] [Dogs on Leash] [Fishing] [Interpretive Signs] [Picnic Facilities] [Restrooms] [Designed for kids]
Coyote Ridge	[P] [H] [B] [Horseback Riding] [Dogs on Leash] [Fishing] [Interpretive Signs] [Picnic Facilities] [Restrooms] [Designed for kids]
Eagle View	Not yet open to the public.
Fischer	[P] [H] [B] [Horseback Riding] [Dogs on Leash] [Fishing] [Interpretive Signs] [Picnic Facilities] [Restrooms] [Designed for kids]
Flores del Sol	Not yet open to the public.
Fossil Creek Reservoir — open down to dusk	[P] [H] [B] [Horseback Riding] [Dogs on Leash] [Fishing] [Interpretive Signs] [Picnic Facilities] [Restrooms] [Designed for kids]
Fossil Creek Wetlands	[P] [H] [B] [Horseback Riding] [Dogs on Leash] [Fishing] [Interpretive Signs] [Picnic Facilities] [Restrooms] [Designed for kids]
Gateway — open down to dusk	[P] [H] [B] [Horseback Riding] [Dogs on Leash] [Fishing] [Interpretive Signs] [Picnic Facilities] [Restrooms] [Designed for kids]
Goose Hollow	[P] [H] [B] [Horseback Riding] [Dogs on Leash] [Fishing] [Interpretive Signs] [Picnic Facilities] [Restrooms] [Designed for kids]
Gustav Swanson	[P] [H] [B] [Horseback Riding] [Dogs on Leash] [Fishing] [Interpretive Signs] [Picnic Facilities] [Restrooms] [Designed for kids]
Hazaleus	Not yet open to the public.
Homestead	[P] [H] [B] [Horseback Riding] [Dogs on Leash] [Fishing] [Interpretive Signs] [Picnic Facilities] [Restrooms] [Designed for kids]
Kingfisher Point	[P] [H] [B] [Horseback Riding] [Dogs on Leash] [Fishing] [Interpretive Signs] [Picnic Facilities] [Restrooms] [Designed for kids]
Maggie Meander	[P] [H] [B] [Horseback Riding] [Dogs on Leash] [Fishing] [Interpretive Signs] [Picnic Facilities] [Restrooms] [Designed for kids]
Mallard's Nest*	[P] [H] [B] [Horseback Riding] [Dogs on Leash] [Fishing] [Interpretive Signs] [Picnic Facilities] [Restrooms] [Designed for kids]
Maxwell	[P] [H] [B] [Horseback Riding] [Dogs on Leash] [Fishing] [Interpretive Signs] [Picnic Facilities] [Restrooms] [Designed for kids]
McMurry	[P] [H] [B] [Horseback Riding] [Dogs on Leash] [Fishing] [Interpretive Signs] [Picnic Facilities] [Restrooms] [Designed for kids]
North Shields Ponds	[P] [H] [B] [Horseback Riding] [Dogs on Leash] [Fishing] [Interpretive Signs] [Picnic Facilities] [Restrooms] [Designed for kids]
Pelican Marsh	[P] [H] [B] [Horseback Riding] [Dogs on Leash] [Fishing] [Interpretive Signs] [Picnic Facilities] [Restrooms] [Designed for kids]
Pineridge	[P] [H] [B] [Horseback Riding] [Dogs on Leash] [Fishing] [Interpretive Signs] [Picnic Facilities] [Restrooms] [Designed for kids]
Prairie Dog Meadow	[P] [H] [B] [Horseback Riding] [Dogs on Leash] [Fishing] [Interpretive Signs] [Picnic Facilities] [Restrooms] [Designed for kids]
Prospect Ponds*	[P] [H] [B] [Horseback Riding] [Dogs on Leash] [Fishing] [Interpretive Signs] [Picnic Facilities] [Restrooms] [Designed for kids]
Red Fox Meadows*	[P] [H] [B] [Horseback Riding] [Dogs on Leash] [Fishing] [Interpretive Signs] [Picnic Facilities] [Restrooms] [Designed for kids]
Redtail Grove	[P] [H] [B] [Horseback Riding] [Dogs on Leash] [Fishing] [Interpretive Signs] [Picnic Facilities] [Restrooms] [Designed for kids]
Redwing Marsh*	[P] [H] [B] [Horseback Riding] [Dogs on Leash] [Fishing] [Interpretive Signs] [Picnic Facilities] [Restrooms] [Designed for kids]
Reservoir Ridge — Gated parking lots open down to dusk	[P] [H] [B] [Horseback Riding] [Dogs on Leash] [Fishing] [Interpretive Signs] [Picnic Facilities] [Restrooms] [Designed for kids]
Riverbend Ponds	[P] [H] [B] [Horseback Riding] [Dogs on Leash] [Fishing] [Interpretive Signs] [Picnic Facilities] [Restrooms] [Designed for kids]
River's Edge	[P] [H] [B] [Horseback Riding] [Dogs on Leash] [Fishing] [Interpretive Signs] [Picnic Facilities] [Restrooms] [Designed for kids]
Ross*	[P] [H] [B] [Horseback Riding] [Dogs on Leash] [Fishing] [Interpretive Signs] [Picnic Facilities] [Restrooms] [Designed for kids]
Running Deer	[P] [H] [B] [Horseback Riding] [Dogs on Leash] [Fishing] [Interpretive Signs] [Picnic Facilities] [Restrooms] [Designed for kids]
Salyer	[P] [H] [B] [Horseback Riding] [Dogs on Leash] [Fishing] [Interpretive Signs] [Picnic Facilities] [Restrooms] [Designed for kids]
Soaring Vista	Not yet open to the public.
Soapstone Prairie — Open down to dusk, Mar.–Nov.	[P] [H] [B] [Horseback Riding] [Dogs on Leash] [Fishing] [Interpretive Signs] [Picnic Facilities] [Restrooms] [Designed for kids]
Springer*	[P] [H] [B] [Horseback Riding] [Dogs on Leash] [Fishing] [Interpretive Signs] [Picnic Facilities] [Restrooms] [Designed for kids]
The Coterie	[P] [H] [B] [Horseback Riding] [Dogs on Leash] [Fishing] [Interpretive Signs] [Picnic Facilities] [Restrooms] [Designed for kids]
Tanglewood*	[P] [H] [B] [Horseback Riding] [Dogs on Leash] [Fishing] [Interpretive Signs] [Picnic Facilities] [Restrooms] [Designed for kids]
Topminnow	Not yet open to the public.
Two Creeks	[P] [H] [B] [Horseback Riding] [Dogs on Leash] [Fishing] [Interpretive Signs] [Picnic Facilities] [Restrooms] [Designed for kids]
Udall*	[P] [H] [B] [Horseback Riding] [Dogs on Leash] [Fishing] [Interpretive Signs] [Picnic Facilities] [Restrooms] [Designed for kids]
Williams	[P] [H] [B] [Horseback Riding] [Dogs on Leash] [Fishing] [Interpretive Signs] [Picnic Facilities] [Restrooms] [Designed for kids]

*Co-owned and/or co-managed with Fort Collins Utilities for flood control, water quality, and wildlife habitat.

CARE FOR THE NATURAL AREAS

- Dogs are not permitted on some natural areas; check the chart above. Dogs must be on a leash.
 - You may not possess or consume alcohol.
 - A valid fishing license from Colorado Parks and Wildlife is required.
 - Openly carrying a firearm is prohibited. Firearms are permitted with a valid concealed carry permit.
 - No camping, motorized vehicles, fires, or fireworks.
 - Collecting or gathering is not allowed.
 - Groups over 15 people, research, commercial use, and other activities need an online permit.
 - No smoking in natural areas, on trails, or in any city-owned facilities.
 - Horses must stay on trails or within 10 feet.
- Complete regulations at fcgov.com/naturalareas

PLAY IT SAFE

Be Snake Awake!
If you encounter a rattlesnake, stop, back up, and warn others in the area. Wait for it to move away or walk around it to give it room to escape. If a snake bites you, call 911. Keep calm and avoid elevating your heart rate.

Lightning — Watch the Weather.
Avoid afternoon outings when lightning is most frequent. Seek safety in vehicles, buildings (not picnic shelters, restrooms, or sheds), or low areas such as dry gullies and gulches.

Be Safe Around the River. It's best to stay out of the river. The water is always cold, and currents and levels change quickly.



**CITY OF FORT COLLINS NATURAL AREAS
YOURS TO EXPLORE**

There are more than 45 natural areas and thousands of visitors. Please help care for these special places. Natural areas are ours to explore, treasure, and steward for the long term. Please check the hours, regulations, and online information before you go!

NATURAL AREAS MISSION:
To conserve and enhance lands with natural resource, agricultural, and scenic values, while providing meaningful education and appropriate recreation opportunities.

Thank you! Every time you shop in Fort Collins or Larimer County, a percentage of your sales tax dollars goes towards conserving natural areas. You are contributing to land conservation, wildlife habitat, trails, and visitor services. That's quite a buy!

1802 2049 ©

Available in Spanish

Auxiliary aids and services are available for persons with disabilities: V/TTD: Dial 711 for Relay Colorado. Assistance available in Spanish

Natural Areas Volunteer Coordinator: 970-416-2480

Master Naturalist Program
(Free nature hikes and educational activities)
Natural Areas Volunteer Coordinator: 970-416-2480
naturalareas@fcgov.com

Natural Rangers 970-416-2147
Natural Areas Department 970-416-2815
naturalareas@fcgov.com

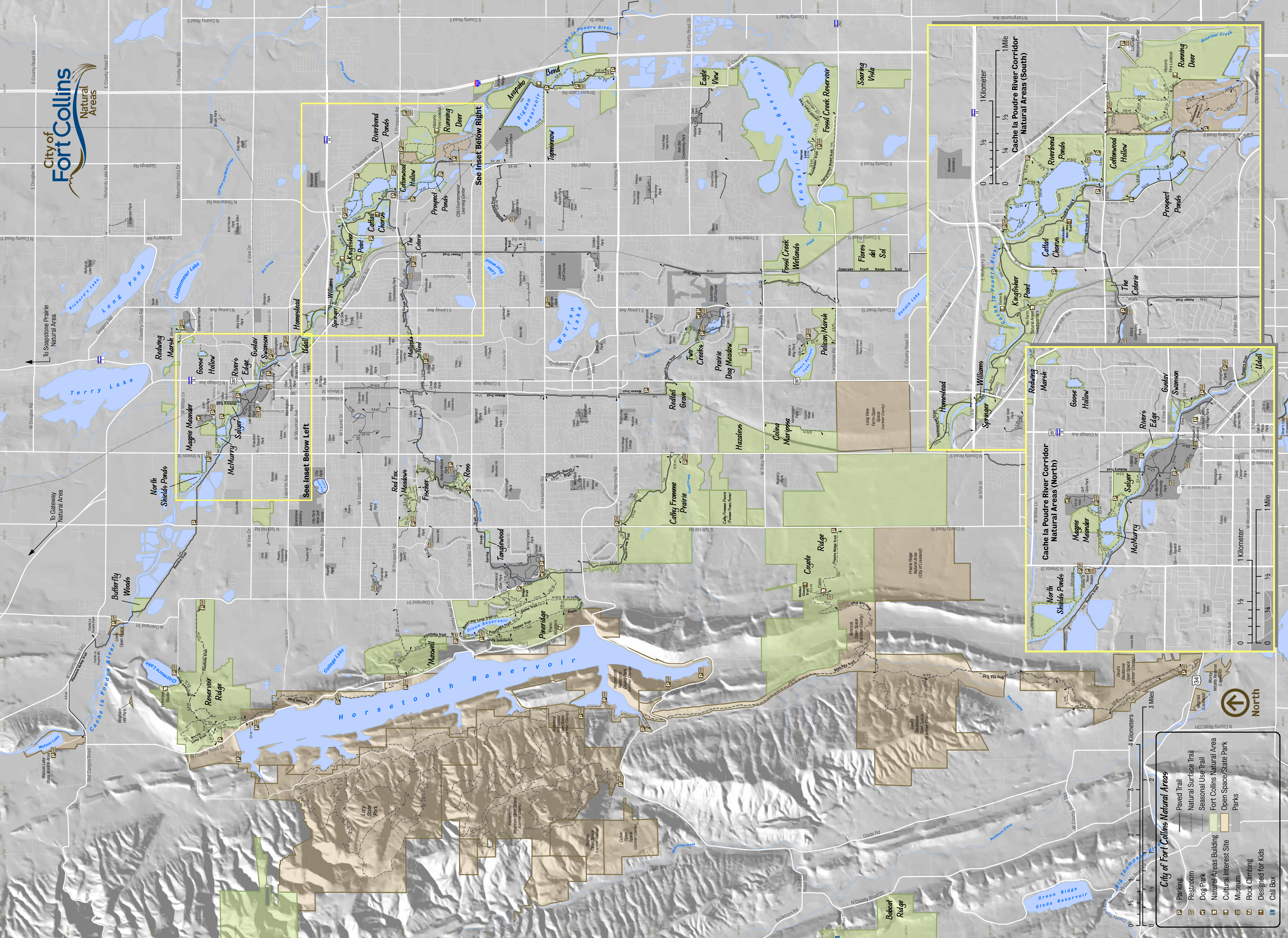
Life-Threatening emergency 911
www.fcgov.com/naturalareas
www.fcgov.com/naturalareas/status.php



CONTACT US
FORT COLLINS NATURAL AREAS DEPARTMENT

**CITY OF FORT COLLINS
NATURAL AREAS
MAP**





To Soapstone Prairie Natural Area

To Gateway Natural Area

North

City of Fort Collins Natural Areas

- Parking
- Restroom
- Dog Park
- Natural Surface Trail
- Seasonal Use Trail
- Natural Areas Building
- Cultural Interest Site
- Museum
- Rock Climbing
- Designed for Kids
- Call Box
- Paved Trail
- Natural Surface Trail
- Seasonal Use Trail
- Fort Collins Natural Area
- Open Space/State Park
- Parks

See Inset Below Right

See Inset Below Left

Cache la Poudre River Corridor Natural Areas (South)

Scale: 0, 1/4, 1/2, 1 Mile / 0, 1/4, 1/2, 1 Kilometer

Cache la Poudre River Corridor Natural Areas (North)

Scale: 0, 1/4, 1/2, 1 Mile / 0, 1/4, 1/2, 1 Kilometer