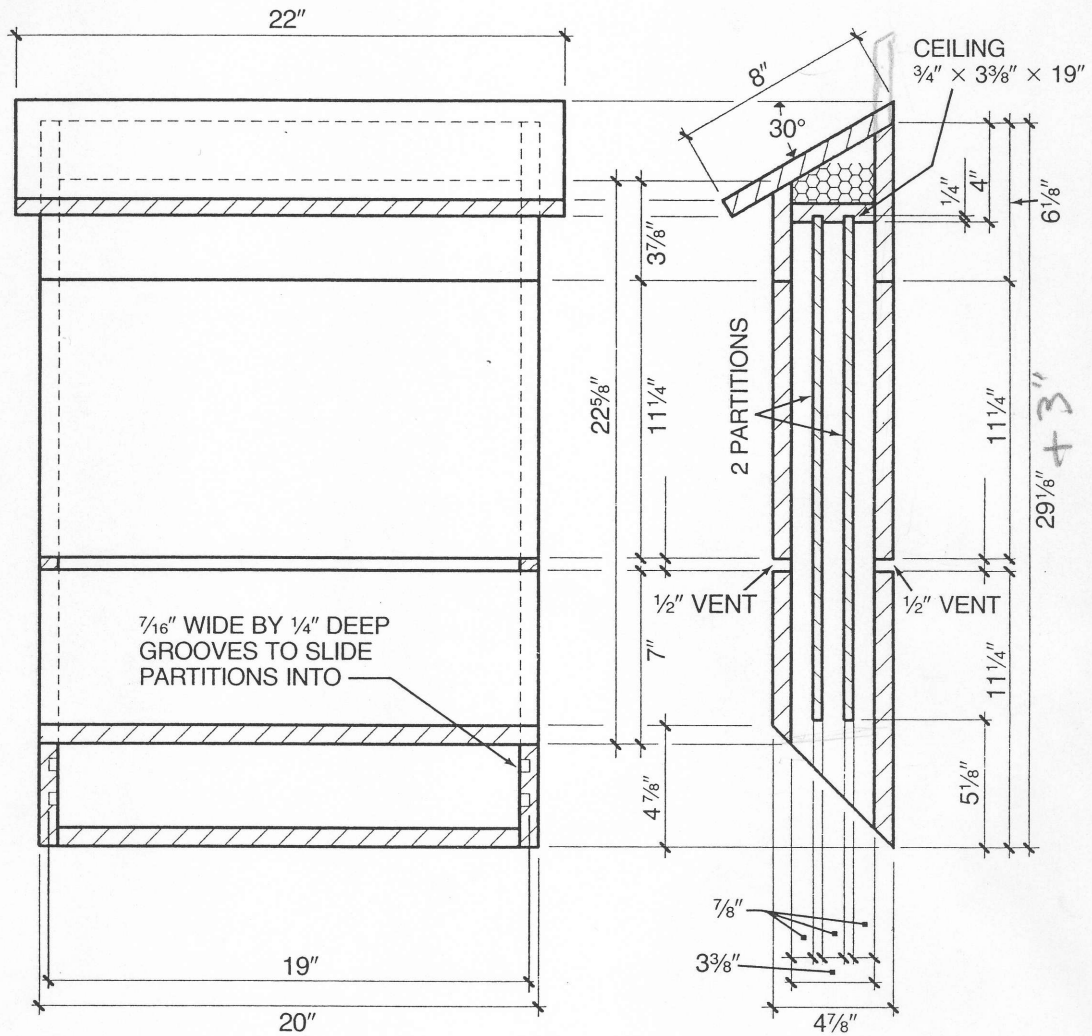


18 HOUSES = 20 PIECES OF 1x2x12



**Materials needed:**

- 14' of 1" x 12" (3/4" x 11 1/4" finish-cut) lumber, cut into 10 pieces for front, back, ceiling, roof, and sides
- One 4' x 4' piece of 3/8" T-111 no-groove exterior plywood (two partitions, 19" x 20 1/4" each)

Two pieces of 42" x 19" fiberglass window screening,\* wrapped around both sides of both partitions, and one 20" x 11 1/4" piece attached to inner surface of lower back board

**Optional:**

Two 17 1/2" x 7" pieces of Reflectix insulation, folded double (for attic)

NOTE: The kind of wood used is not known to affect bat use, though red cedar is the most durable. If screening is not used, vertical grooves should be cut narrower to 3/8" to ensure a tighter fit. At least one wood surface in each chamber, plus the inner surface of the lower back board, must then be roughened or slightly grooved (horizontally) to provide a surface for bats to cling to.

FIGURE 2—SMALL NURSERY HOUSE