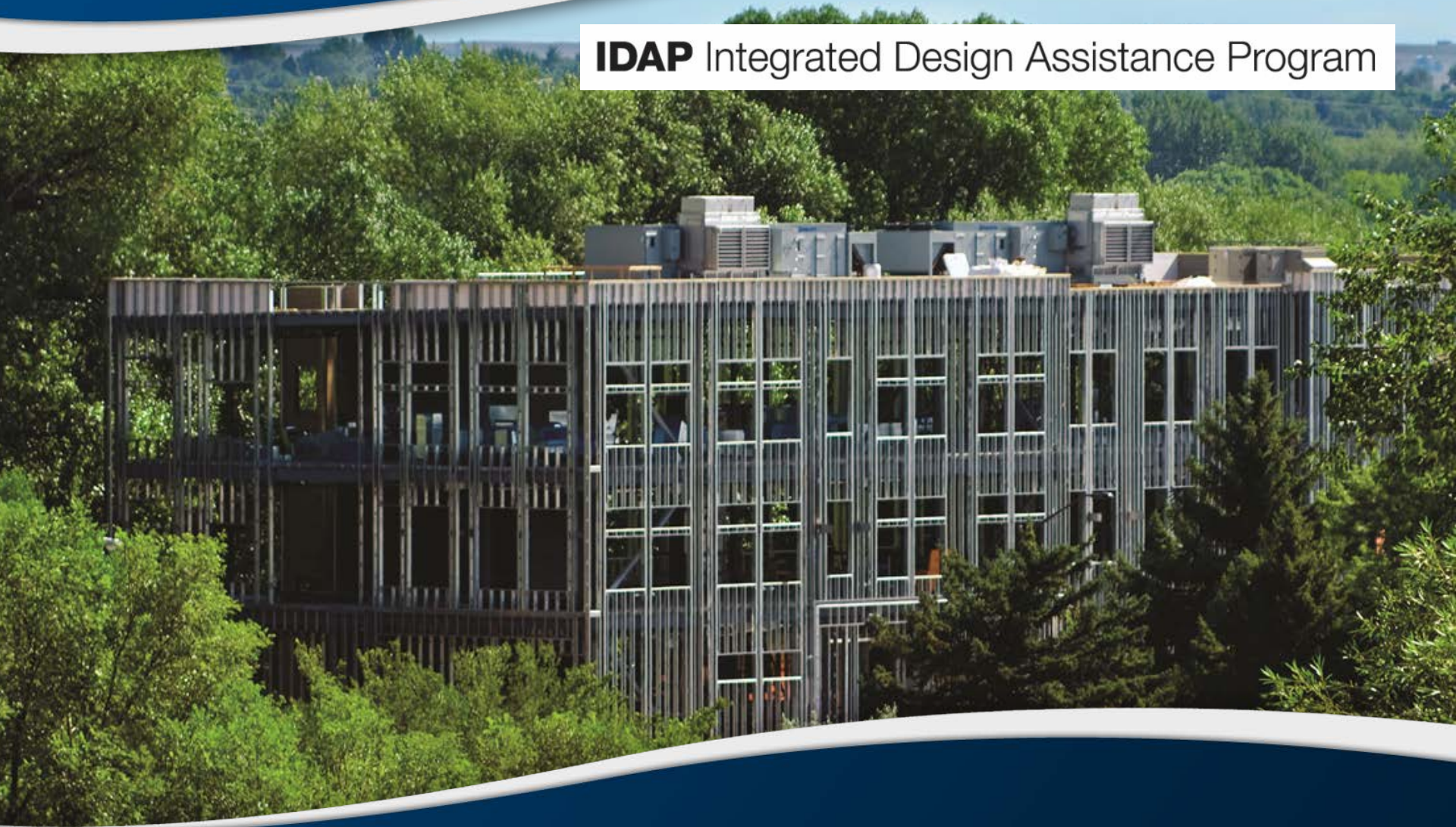


IDAP Integrated Design Assistance Program





- A framework to bring the energy efficiency discussion into the design process
- List of approved energy consultants/modelers (hired by design team)
- Facilitation for early design charrette (energy workshop)
- Energy modeling reporting at key design milestones
- Financial incentives help offset design and construction costs
- Systems approach to addressing energy use
- Technical support and lessons learned from past projects

Woodward – ICS Building



CSU Powerhouse







Fossil Ridge High School

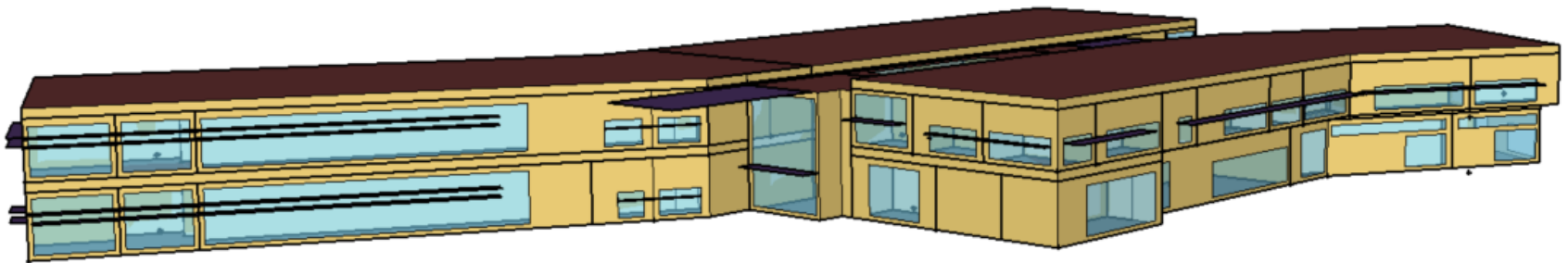




Integrated Design Process

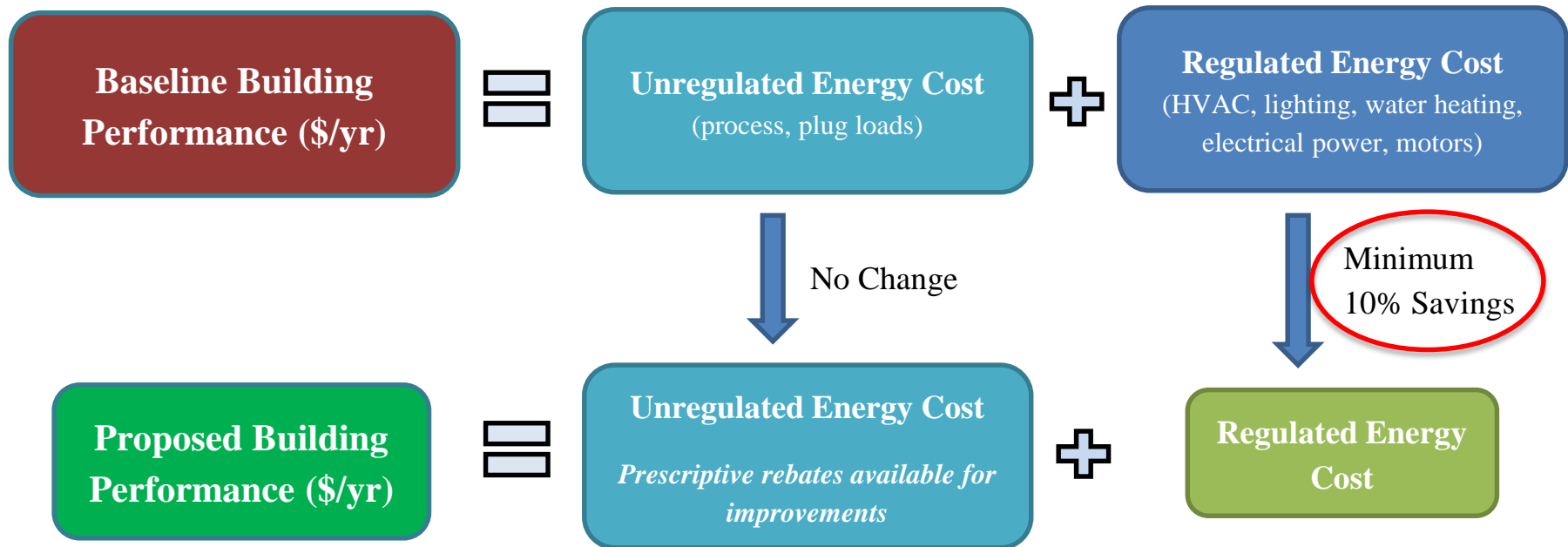


Energy Modeling

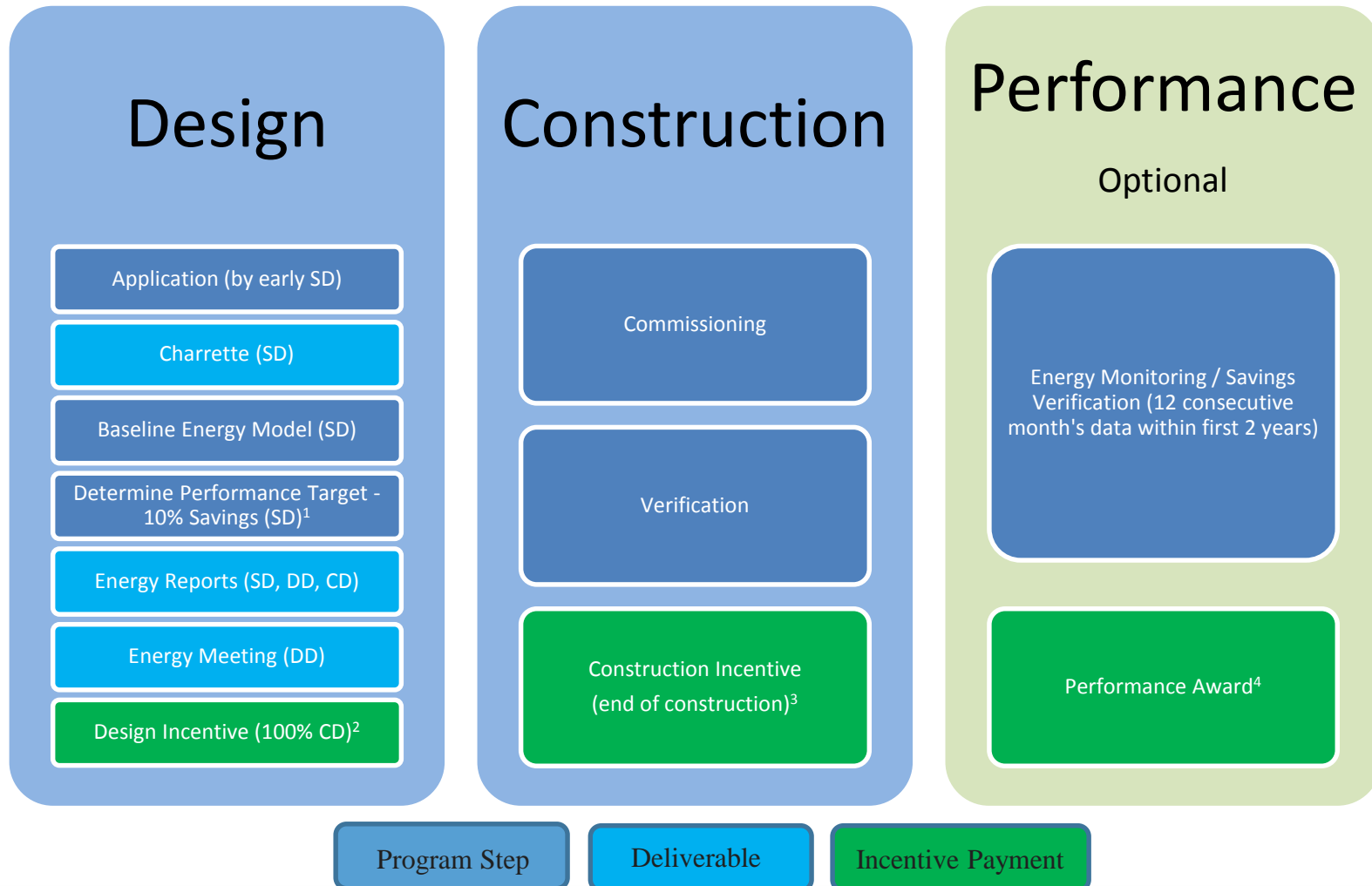


Energy Performance Target

- Minimum 10% savings in Regulated Energy Cost from code baseline.



IDAP Process and Incentives



- **Design Incentive** - \$5,000 + \$0.10/sf (paid at the end of design)



- **Construction Incentive** – 2 years modeled energy cost savings (paid at end of construction)



- **Optional Performance Award** – 1 year actual energy cost savings (paid after 12 months of occupancy, monitored)



Thank You!

Gary Schroeder
Sr. Energy Services Engineer
Fort Collins Utilities
gschroeder@fcgov.com
970-221-6395

www.fcgov.com/idap