

# SOUTH COLLEGE AVENUE ACCESS CONTROL PLAN UPDATE

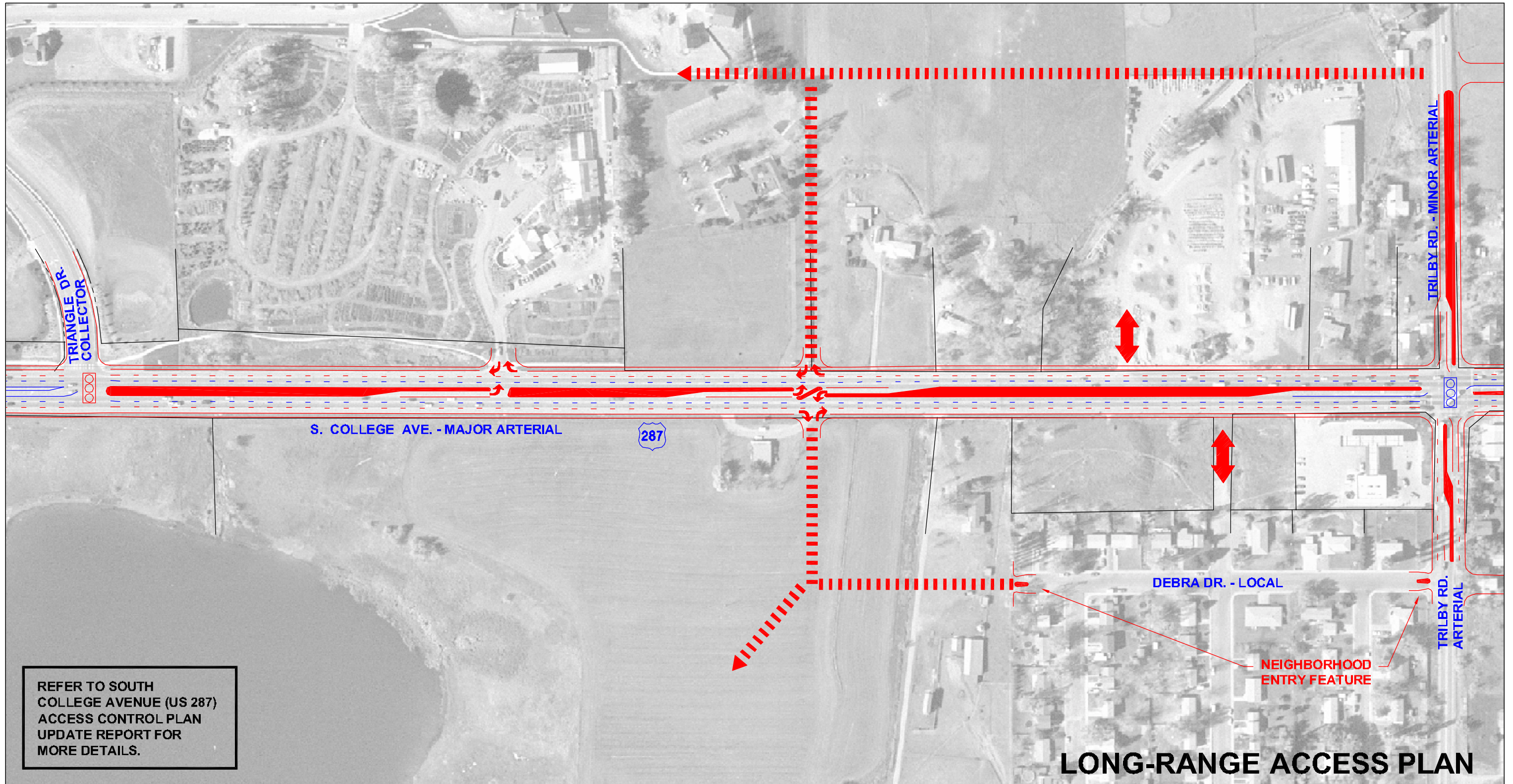


LEGEND	PUBLIC STREETS	PERMITTED MOVEMENT	TRAFFIC SIGNAL	MEDIAN	ACCESS CIRCULATOR	APPROXIMATE RIGHT-IN/RIGHT-OUT ACCESS LOCATION
EXISTING						
1989 ACCESS PLAN						
PROPOSED						



FIGURE 5-3  
LARIMER COUNTY ROAD 32 TO VICTORIA DRIVE





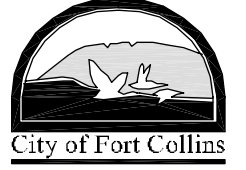
REFER TO SOUTH COLLEGE AVENUE (US 287) ACCESS CONTROL PLAN UPDATE REPORT FOR MORE DETAILS.

**LONG-RANGE ACCESS PLAN**

**SOUTH COLLEGE AVENUE ACCESS CONTROL PLAN UPDATE**



LEGEND	PUBLIC STREETS	PERMITTED MOVEMENT	TRAFFIC SIGNAL	MEDIAN	ACCESS CIRCULATOR	APPROXIMATE RIGHT-IN/RIGHT-OUT ACCESS LOCATION
EXISTING						
1989 ACCESS PLAN						
PROPOSED						



**FIGURE 5-4**  
**TRIANGLE DRIVE TO TRILBY ROAD**