

West Elizabeth Corridor Project

WEST ELIZABETH BUS RAPID TRANSIT PROJECT

The West Elizabeth Corridor provides a critical, three-mile transportation connection for a growing business district and multi-family housing, and serves as a critical link for people accessing the Colorado State University (CSU) Main and Foothills Campuses.

The West Elizabeth Bus Rapid (BRT) Transit project will bring MAX on Mason-style service to the West Elizabeth corridor.



WHAT IS THE WEST ELIZABETH CORRIDOR?

The Corridor accommodates a high level of transit ridership, and is extensively traveled by people walking, biking, and driving. The Corridor serves:

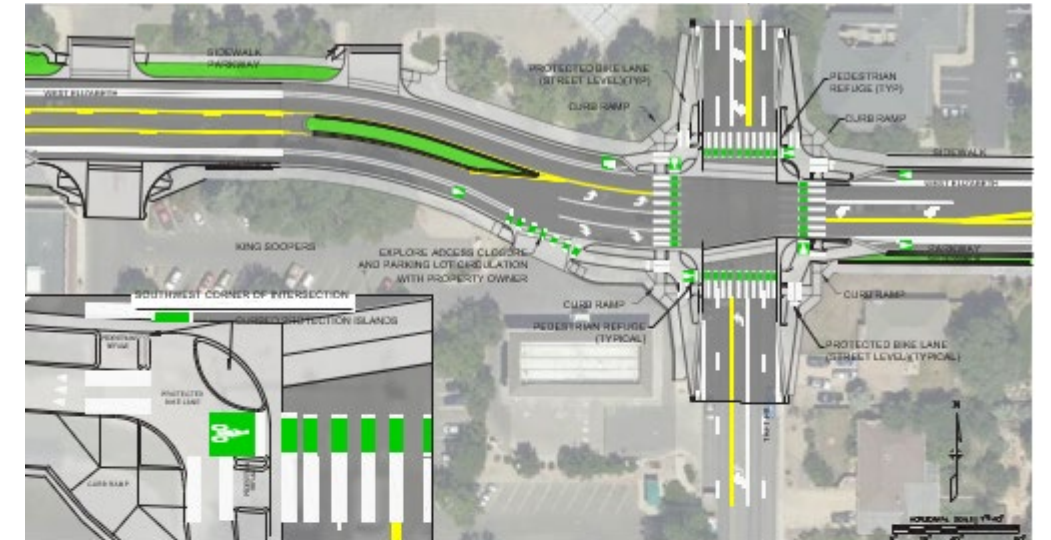
24,000 residents **20,000** jobs

The West Elizabeth Corridor will include:

- Reliable and efficient bus service with prioritized signals, advanced fare payment, comfortable bus stop islands, and enhanced stations
- A protected bike lane that is separated from vehicle traffic
- Enhanced bicycle and pedestrian crossings
- A complete ADA-compliant sidewalk network
- Traffic calming throughout the corridor

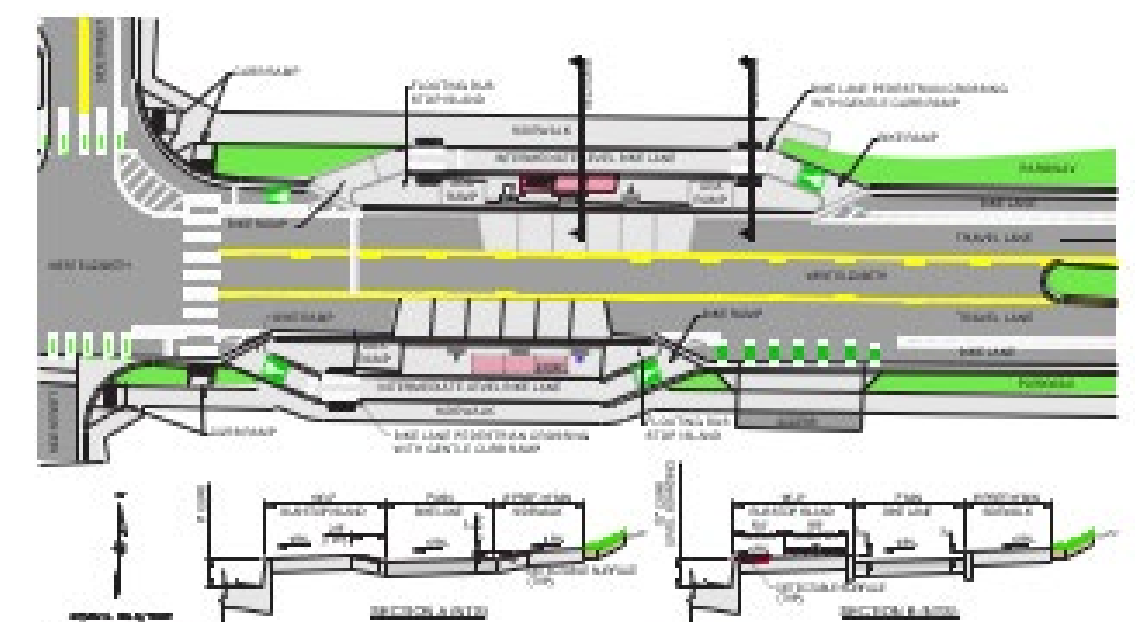
Benefits of Protected Intersections

- Many vehicle-pedestrian and vehicle-bicyclist conflicts occur at intersections.
- At protected intersections, the bikeway is set back from the parallel motor vehicle traffic, slowing turning vehicles, improving sightlines and yielding, and reducing crossing times for those walking and rolling.
- Protected intersections are planned at Taft Hill Road, Constitution Avenue, and City Park Avenue.



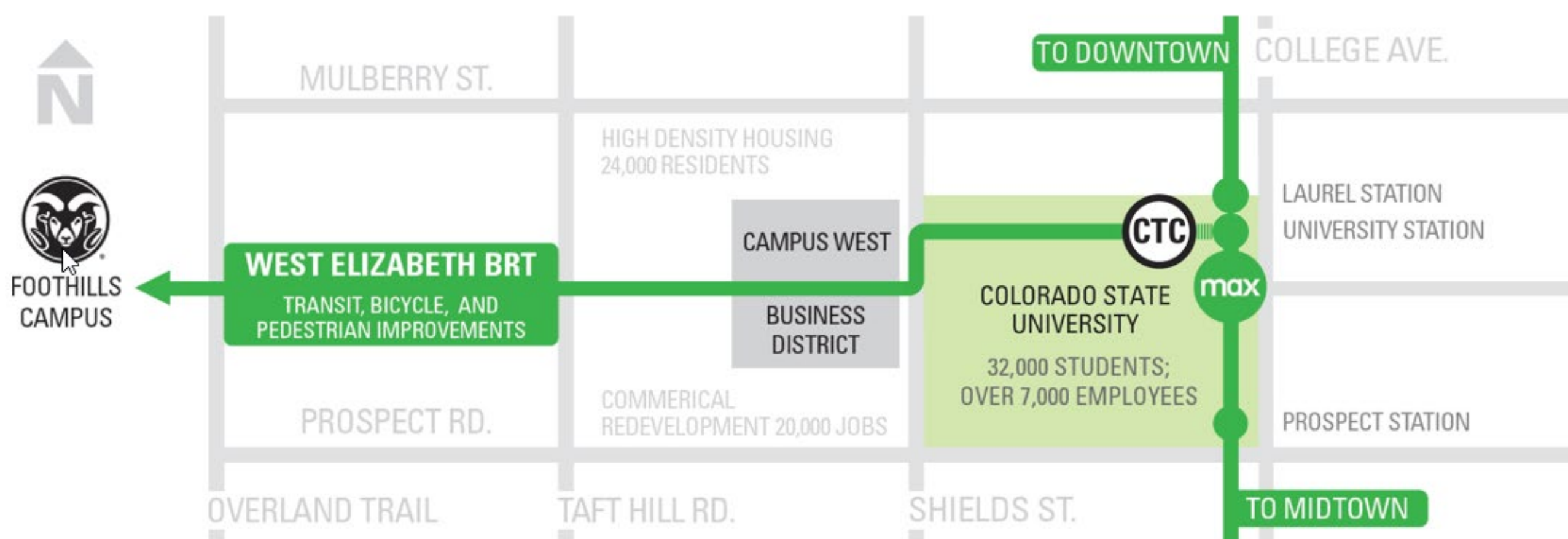
Benefits of Floating Bus Stops

Floating bus stops are separated from the sidewalk by a bike channel, eliminating conflicts between transit vehicles and people biking through stops. Boarding islands create accessible in-lane stops with near-level or level boarding.



Roundabout at Overland

Roundabouts provide safety benefits by slowing vehicle traffic and reducing the number of potential conflict locations. The intersection of West Elizabeth Street and Overland Trail has the volumes, turning movements, and footprint to make for an effective roundabout.



WEST ELIZABETH BUS RAPID TRANSIT PROJECT

WHY ARE WE DOING THE PROJECT?

1.1 million annual ridership on existing 4 routes

40% of survey respondents said their top barrier to using the bus more often is "buses aren't fast/frequent enough"

To accommodate the growing travel demand from commercial and mixed-use redevelopment. Additionally, CSU's enrollment continues to increase, and the City's population is projected to continue growing.

The BRT and protected bike lanes will provide a vital connection between CSU's Foothills and Main campus through densely populated student neighborhoods.

Improve Safety

To implement safety improvements at locations with a demonstrated crash history and improve comfort for people walking and biking.

Increase Equitable Access

To implement complete, ADA-compliant sidewalks and provide multimodal access to low-income and minority populations.

Move People Efficiently

The project supports development and redevelopment in the Corridor by adding significant mass transportation capacity.

Project Timeline

- 2016 - West Elizabeth Enhanced Travel Corridor Plan Completed
- 2022 - 30% Design Completed
- 2023 - Full Design to Begin
- 2025 - Construction can begin if project funding is secured

fcgov.com/westelizabeth | ridetransfort.com