

# Manhattan Ave. Transportation Improvements

**Cortney Geary**

Active Modes Manager




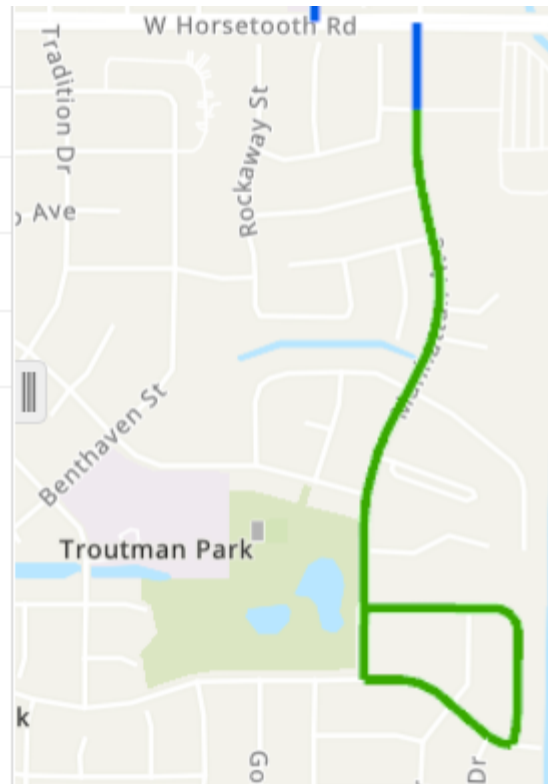
- Background
- Existing Deficiencies
- Proposed Improvements
- Pre-construction Communications
- Q&A

# Street Maintenance Program

- Restriping in coordination with Street Maintenance Program
- Manhattan Ave. resurfacing from Horsetooth Rd. to Troutman Pkwy. in spring – summer 2024

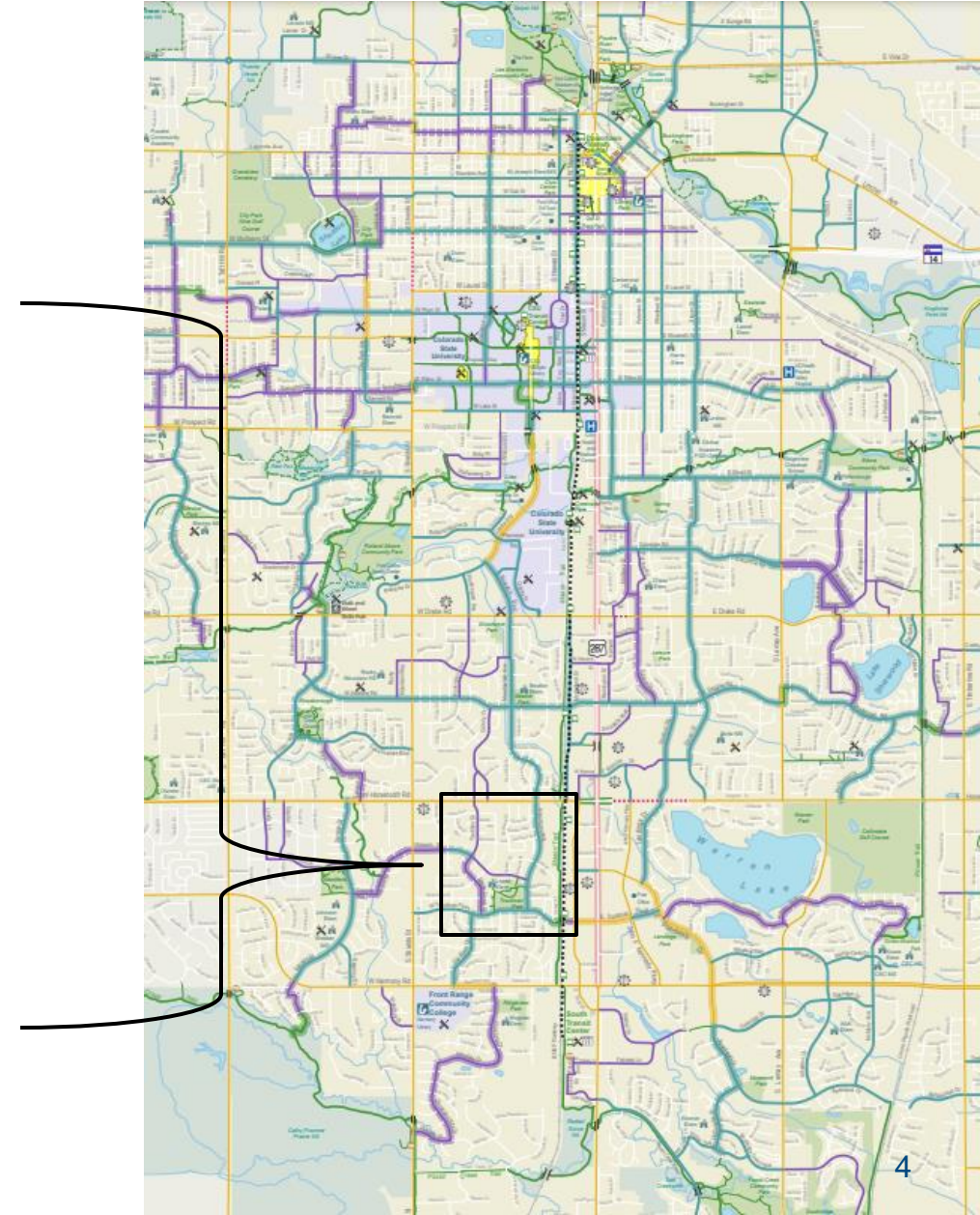
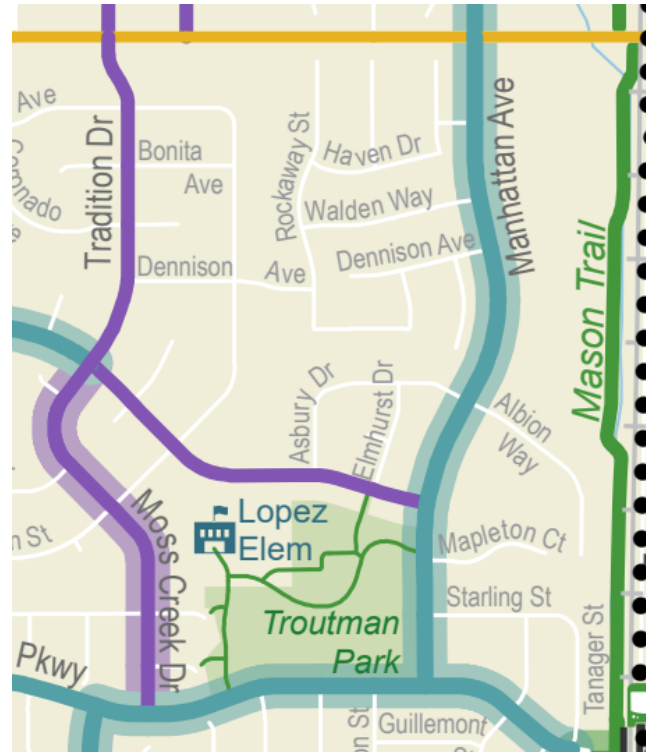
## Street Projects Current Year

-  Asphalt Overlay
-  Asphalt Road Reconstruction
-  Concrete Pavement Repair
-  Surface Treatment



# Low-stress Bicycle Network

- Manhattan Ave. is part of Centre Bikeway





- **Our Climate Future – 2021**
  - Reduce 2030 greenhouse gas emissions by 80% below 2005 baseline levels
- **Active Modes Plan – 2022**
  - Achieve 50% active mode share by 2032
- **Vision Zero Action Plan – 2023**
  - By 2032, no one dies or has a serious injury while traveling in Fort Collins.



# Existing Deficiencies

- Substandard parking and bike lanes
  - ~12 combined parking and bike lanes on Manhattan Ave. from Dennison Ave. to Troutman Pkwy.
  - Standard parking lane = 8 – 9'
  - Minimum standard bike lane = 5'
- Lack of ADA accessible parking for Troutman Park
- Need for additional traffic calming



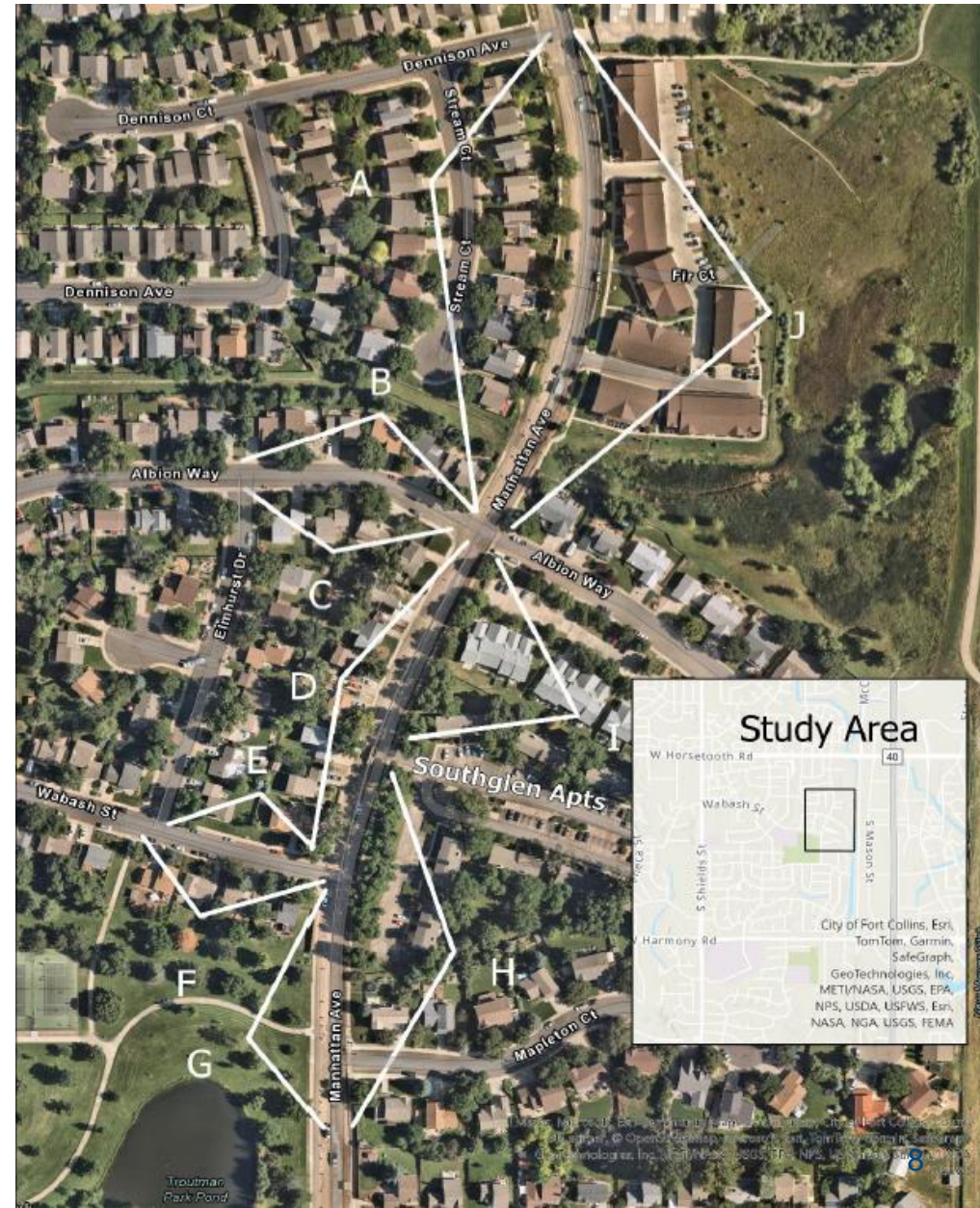
# Proposed Improvements

- Bring parking and bike lanes up to standard
  - Requires some on-street parking removal
- Buffered bike lanes
- Add ADA accessible parking spot next to Troutman Park
- Narrow vehicular travel lanes to 10'



# Parking Study

- Conducted January 17 – 24, 2024
- Counted cars during 7 – 8 AM, 3 – 4 PM, and 6 – 7 PM time slots
- Average occupancy on Manhattan Ave. from Dennison Ave. to south of Mapleton Ct. = **10%**
- Average occupancy in study area = **18%**
- Highest occupancy in the corridor observed on east side of Manhattan Ave. from Dennison Ave. to Albion Way
- Total parking spaces in study area = **130**
- Proposed restriping expected to result in removal of **61** parking spaces
- Anticipate remaining parking should accommodate demand based on parking capacity observed January 2024

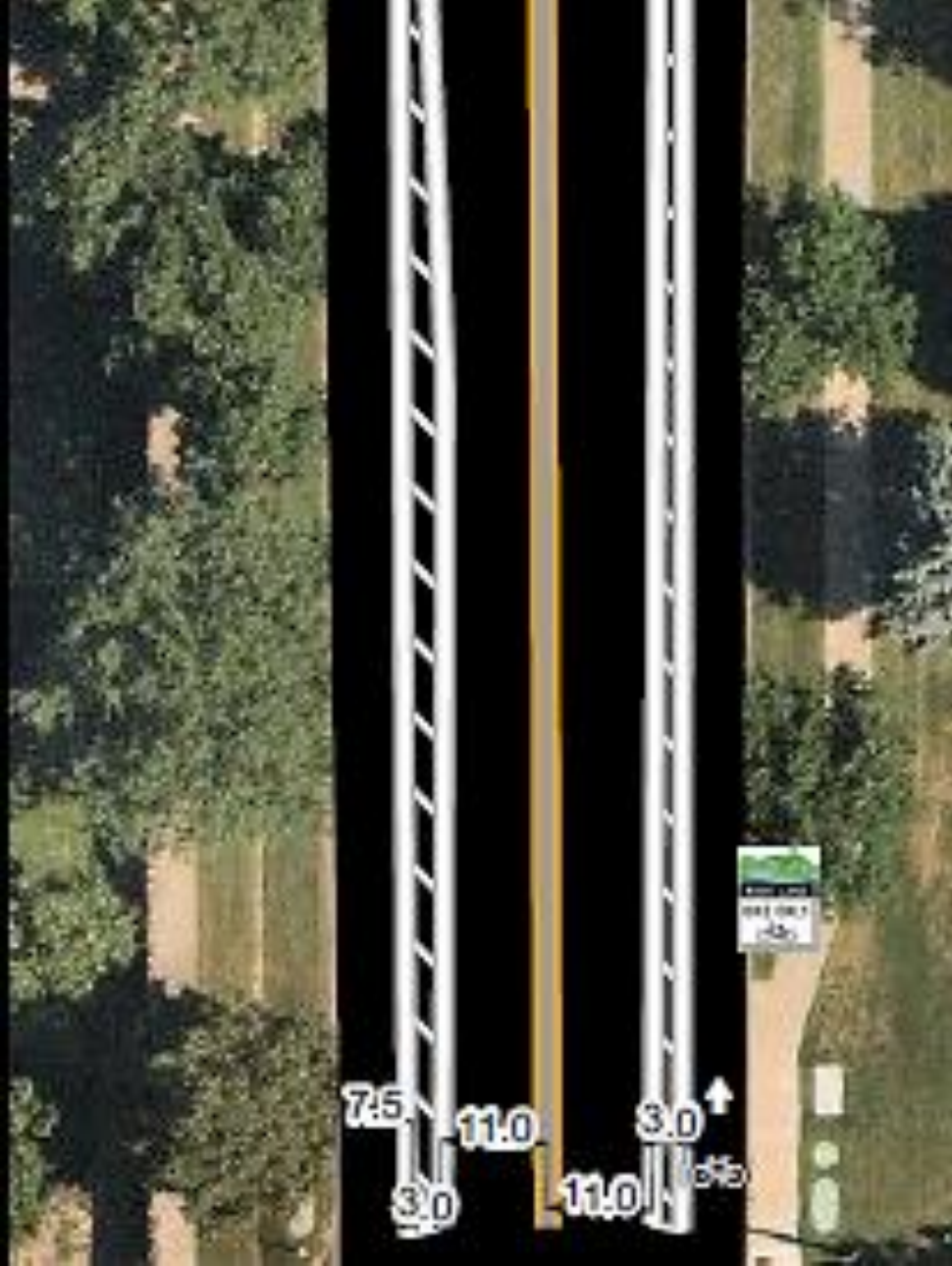




# Buffered Bike Lanes

- Separated from motor vehicle traffic by a dedicated buffer space marked on the pavement.
- NACTO *Designing for All Ages & Abilities* guide recommends at least buffered bike lanes for streets like Manhattan Ave. with 25 mph speed and ~4,500 average daily traffic





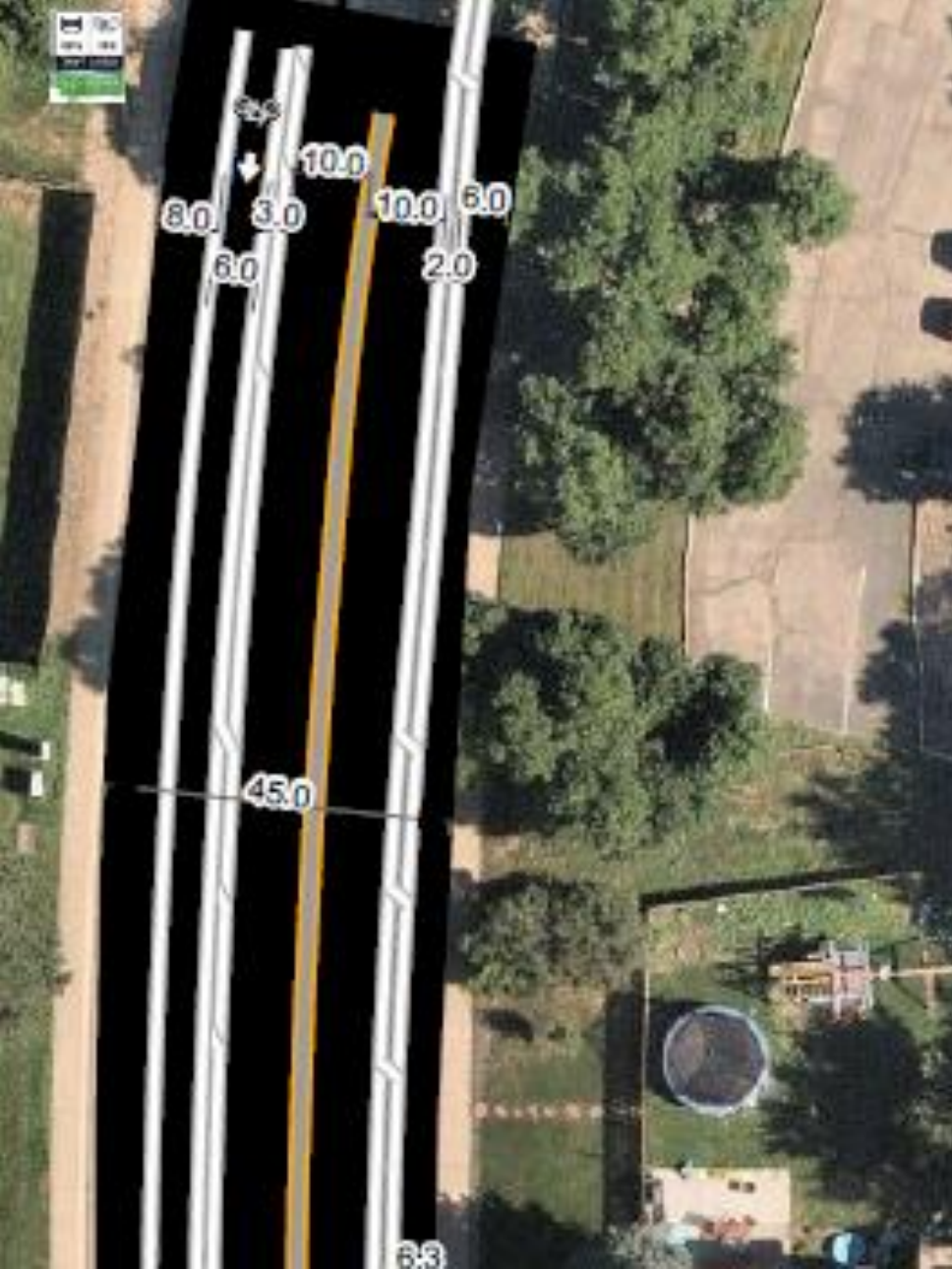
### Horsetooth Rd. to Dennison Ave.

- No parking currently or following restriping
- 7.5' bike lanes
- 3' buffers
- 11' vehicular travel lanes



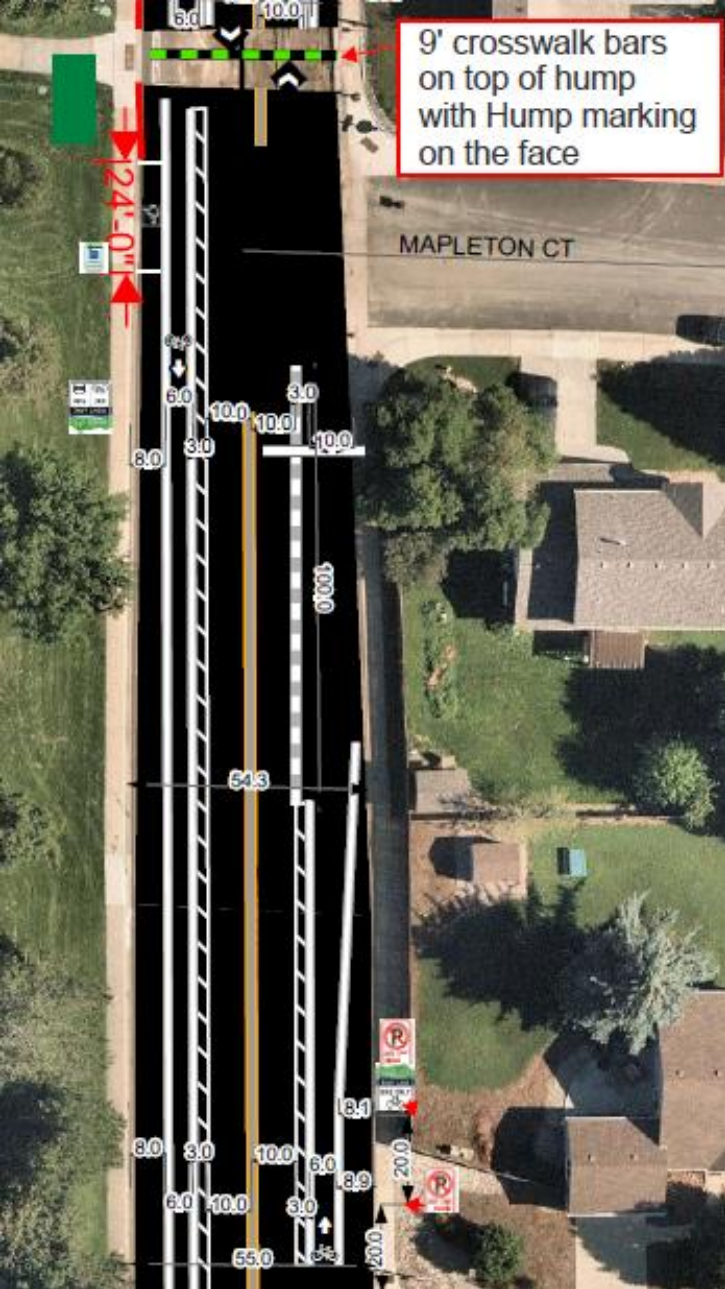
### Dennison Ave. to Albion Way

- 8 – 10' east side parking
- 6' bike lanes
- 3' west side, 2' east side buffers
- 10' vehicular travel lanes



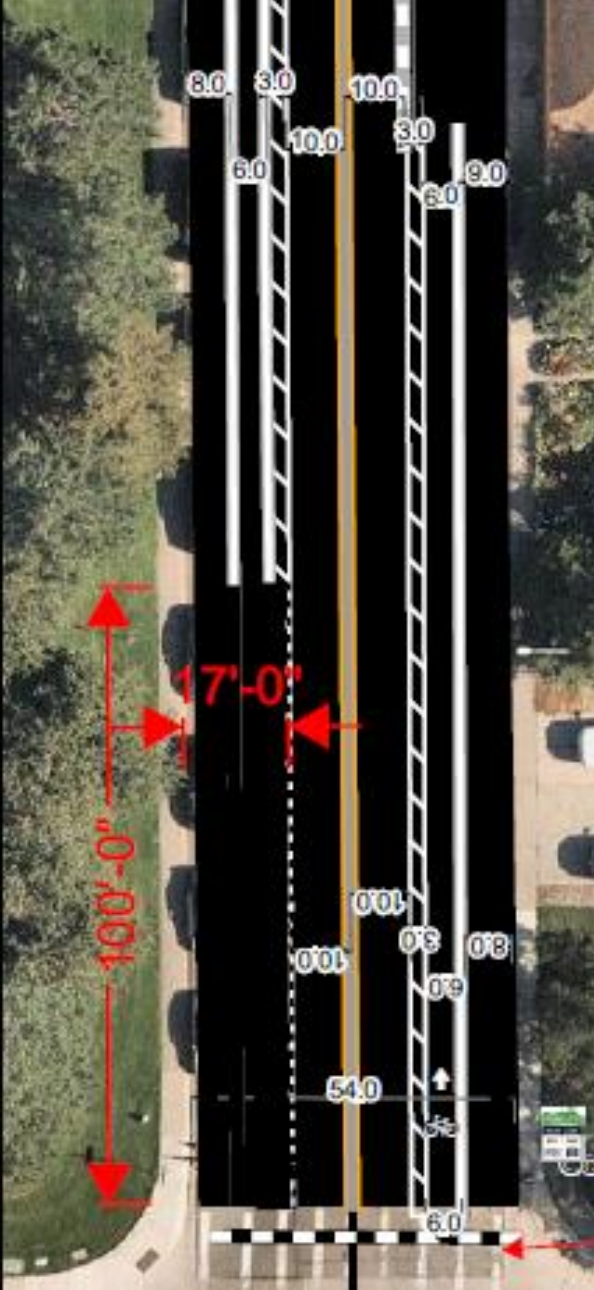
### Albion Way to south of Mapleton Ct.

- 8' west side parking
- 6' bike lanes
- 3' west side, 2' east side buffers
- 10' vehicular travel lanes



## Mapleton Ct. area

- ADA accessible parking space just south of Troutman park path
- East side parking picks back up just south of Mapleton Ct.

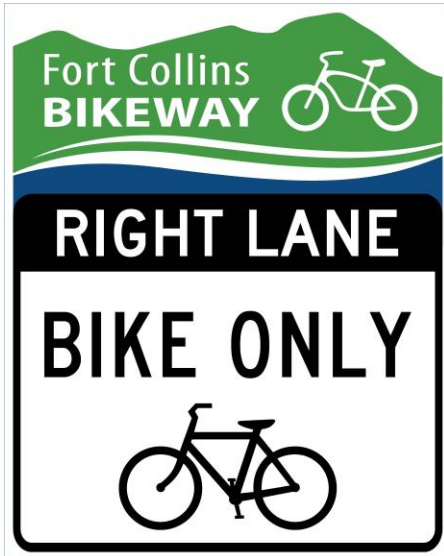


### South of Mapleton Ct. to Troutman Pkwy.

- 8' west side, 9' east side parking
- Bike facilities continued to Troutman Pkwy. intersection

*Existing striping*





- Letters from Streets Department in advance of resurfacing
- Metal boards with project fact sheets
- Postcards on cars parked along Manhattan Ave.
- Traffic control signage
- Permanent signage



To report parking in the bike lane,  
contact the Police non-emergency  
line at 970.419.FCPD(3273)



# Questions?

Cortney Geary | Active Modes Manager | [cgeary@fcgov.com](mailto:cgeary@fcgov.com)