



College and Trilby Intersection Improvements



Public Meeting

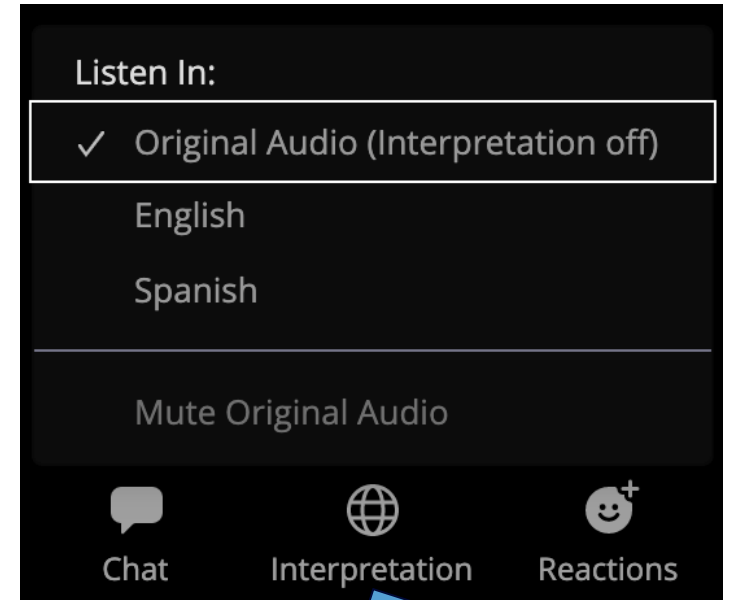
Tracy Dyer, City of Fort Collins Engineering

March 3, 2022

- Please select either English or Spanish audio by clicking the “Interpretation” button on the menu bar.

Por favor seleccione el audio ya sea en inglés o español pulsando el botón de la “interpretación” en la barra de menú.

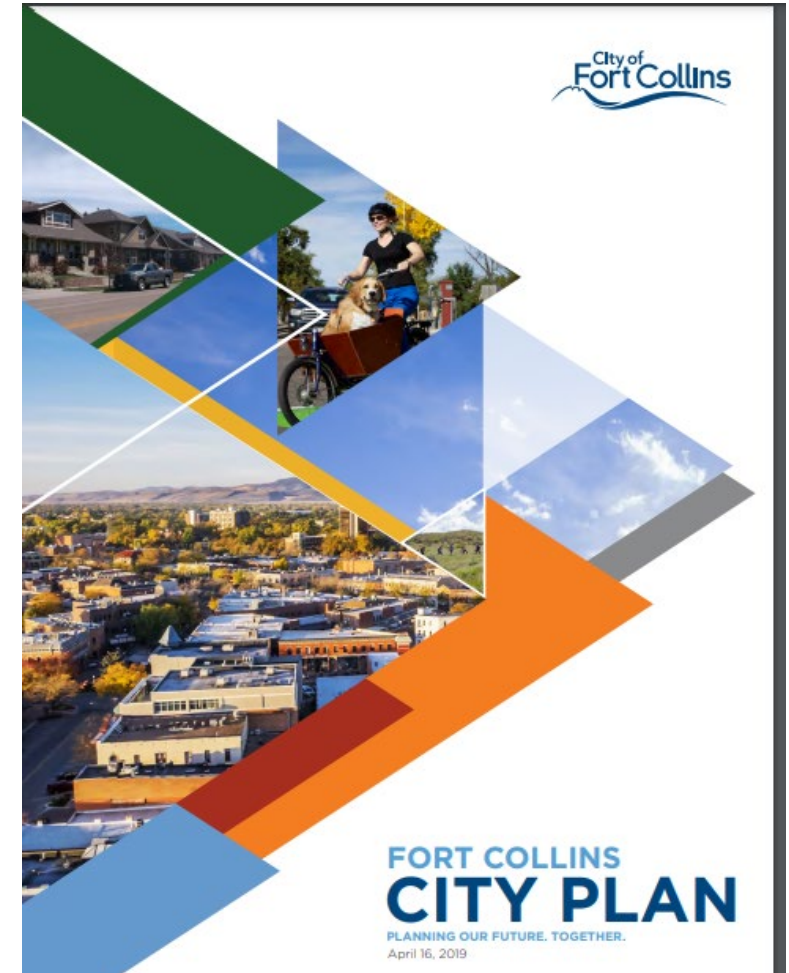
- Questions in chat (will answer at the end)
 - Non-verbal only
- Call in attendees ask questions via website:
<https://www.fcgov.com/engineering/college-trilby>



- Introduction of the Team
- Background Information
- Funding
- Design
- Schedule
- Poll Questions
- Q&A

The improvements at the intersection of College Avenue (US-287) and Trilby Road are being completed because:

- Arterial Intersection Prioritization Study (2010) identified traffic safety and congestion problems (high frequency approach turn and rear end, 1 fatality)
- Capacity Improvements (20 year outward projection)
- Improved facilities for all modes
 - Bicycle / Pedestrian / Transit accessibility are a concern. Increased demand and no existing facilities.



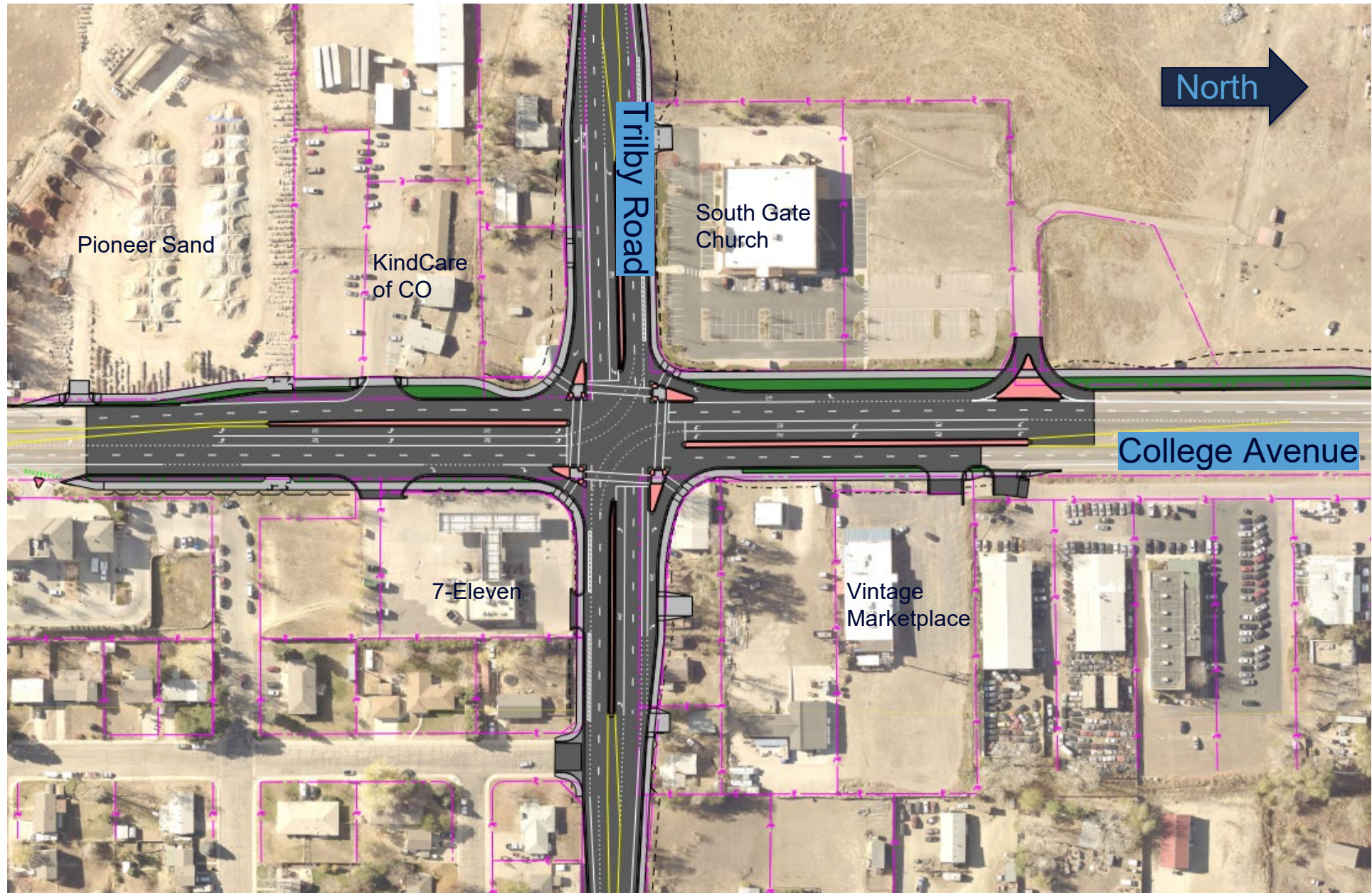
- Federal Grants
 - \$2.25M – Safety (HSIP)
 - \$750K – Congestion / Air Quality (CMAQ)
 - \$1.5M – Surface Trans Econ Recovery (FASTER)
 - \$3.6M – Surface Trans Block Funding (STGB)
 - Total: \$8.1M

- Local Contribution / Source
 - \$675K – Cap. Expansion Fee / Small Dev Contrib.
 - \$1.2M – Capital Improvement Funds
 - Total: \$1.8M

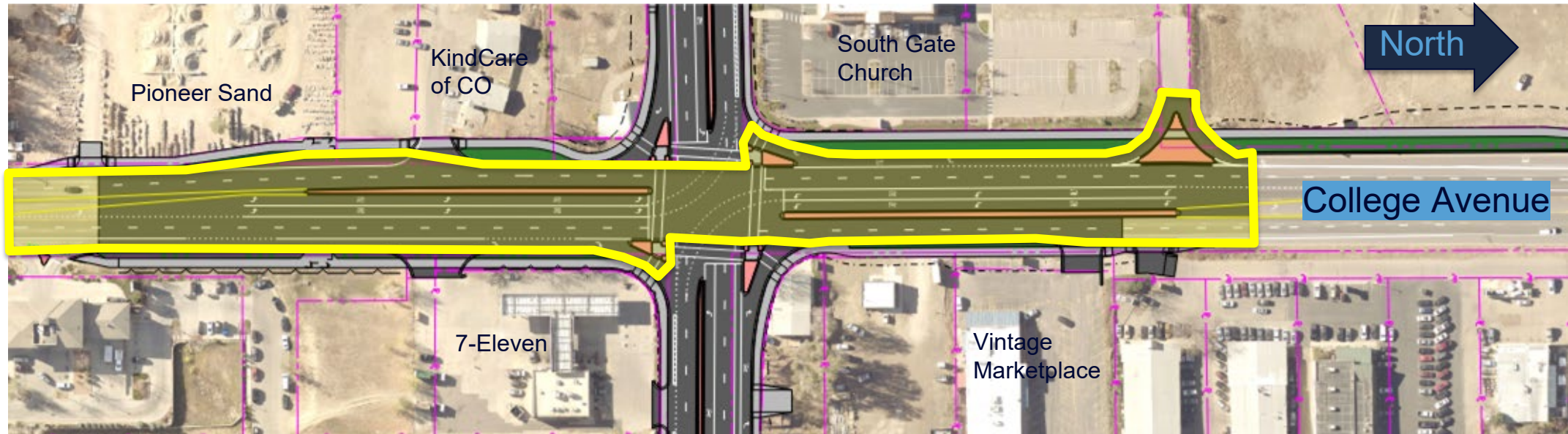
- Estimated total project cost \$10-11 M



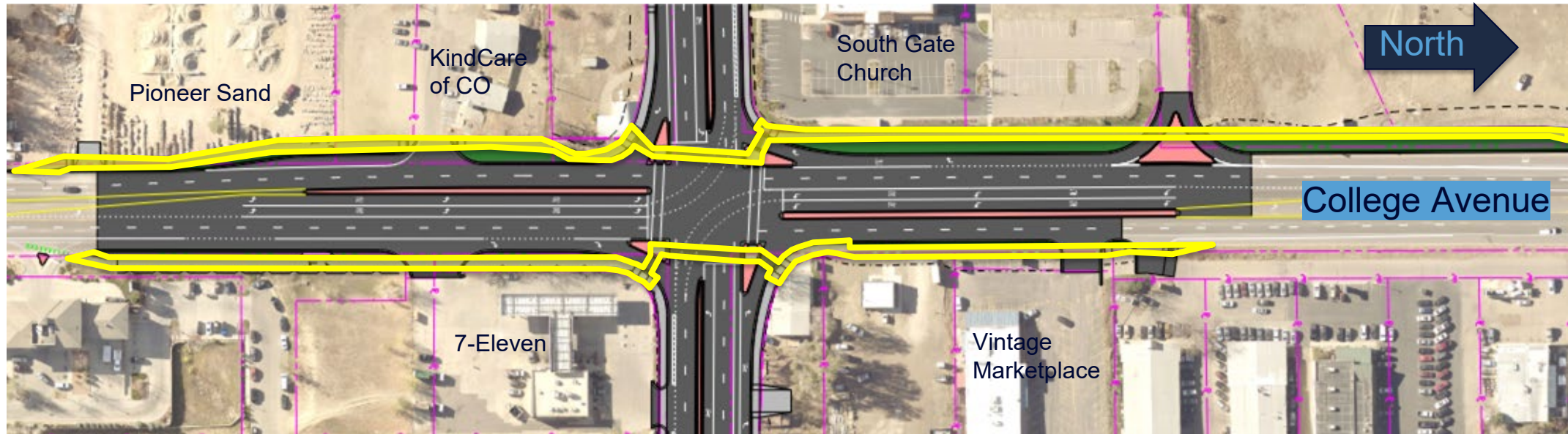
- Determine procurement method
- Begin Rights of Way acquisition process
- Use the Contractor relationship to consider/assess construction impacts and mitigation
- Complete final design
- Communicate construction information to residents/businesses
- Begin construction



- Roadway Improvements
- Bicycle / Pedestrian / Transit Improvements
- Drainage Improvements
- Urban Design
- Utilities
- Development coordination

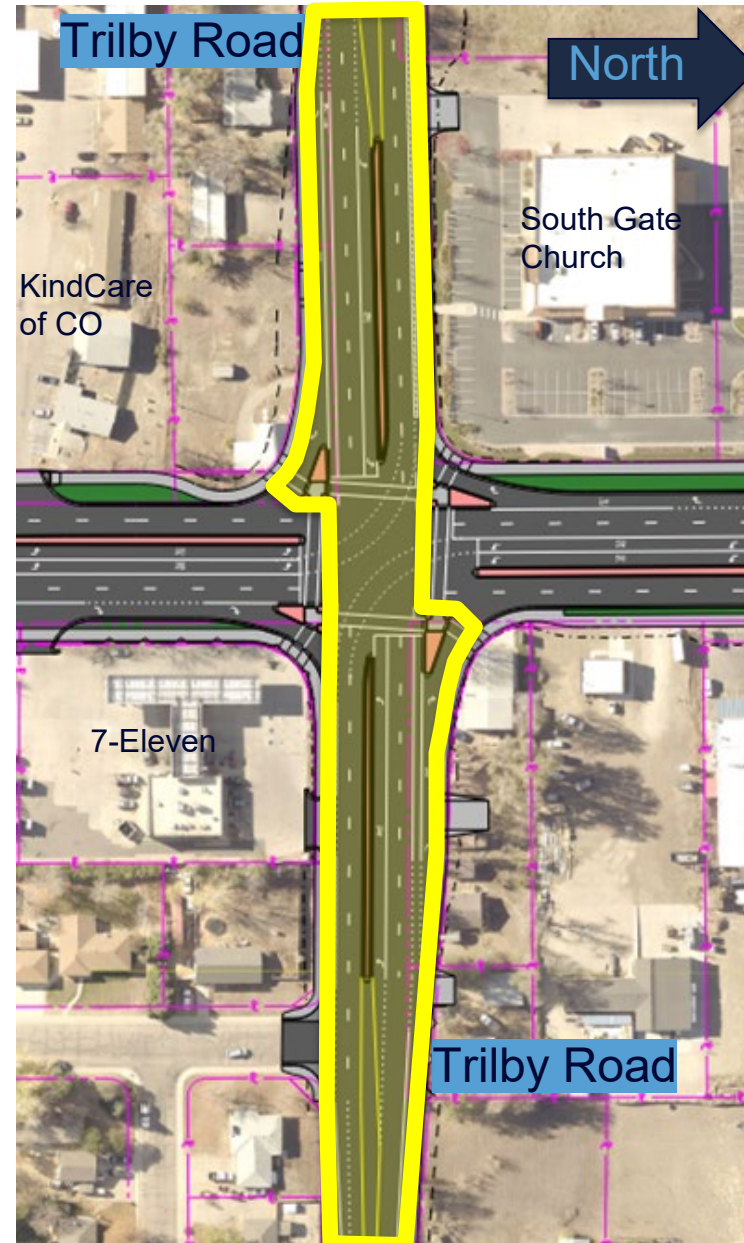


- Dual left turn lanes
- Two through lanes
- Deceleration right turn lanes

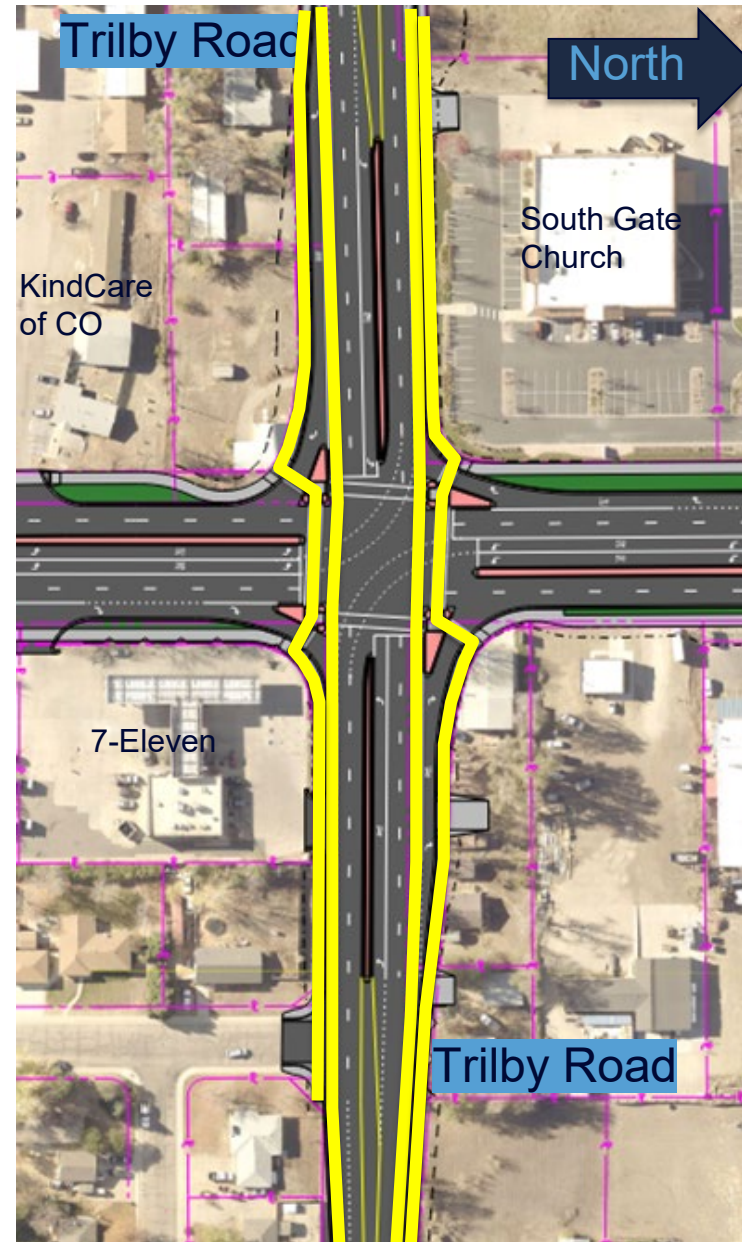


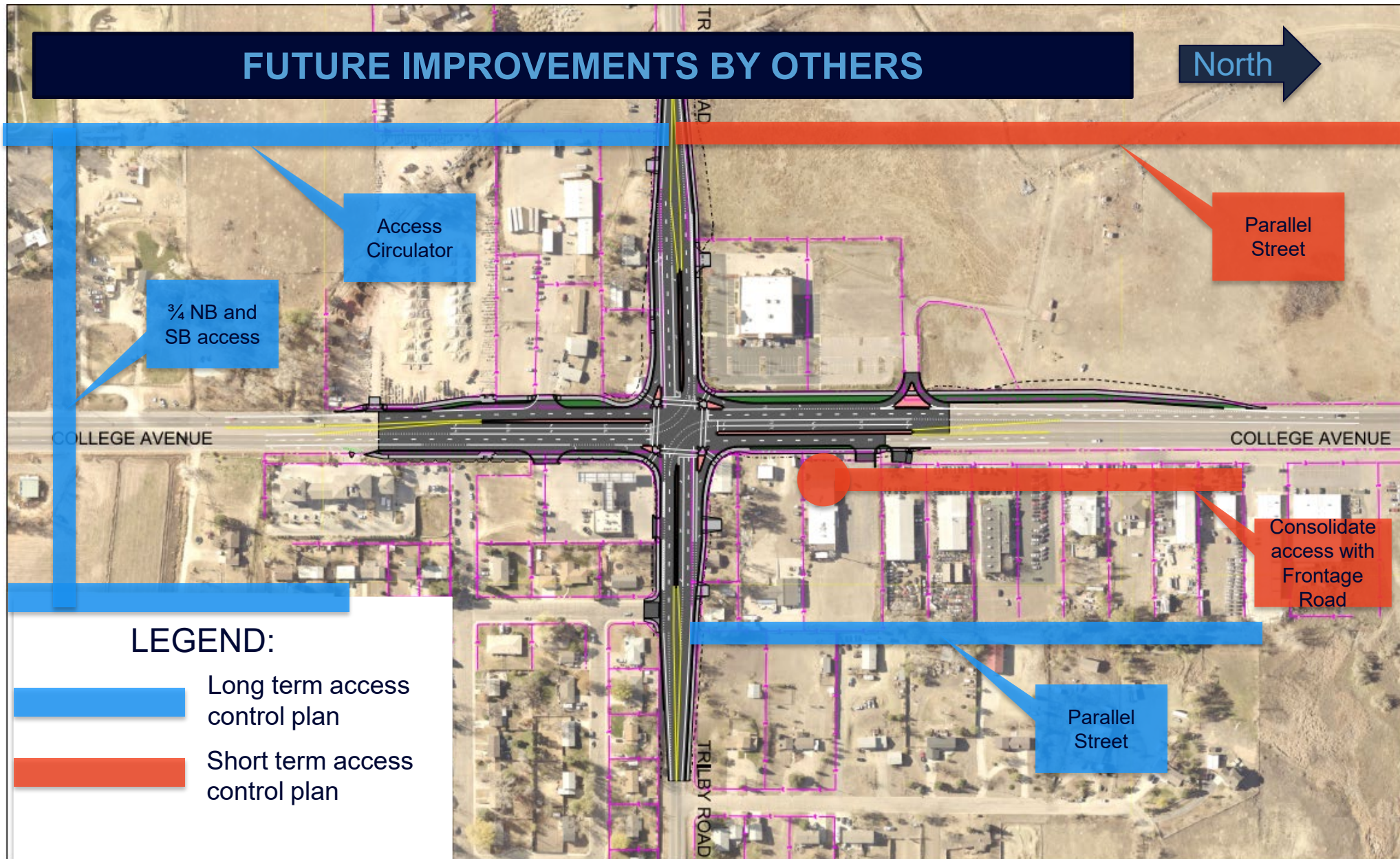
- 10 foot multi-use path
- Large crossing islands
- Bus stop improvements

- Protected left turn lane
- Two through lanes
- Deceleration right turn lanes



- 6 foot on-street buffered bike lane
- 8 foot attached sidewalk
- Large crossing islands









VIEW LOOKING EAST
ALONG TRILBY ROAD



VIEW LOOKING EAST
ALONG TRILBY ROAD



VIEW LOOKING SOUTH
ALONG COLLEGE AVE



VIEW LOOKING NORTH
ALONG COLLEGE AVE

Poll Questions



THANK YOU!

For More Information, Visit

www.fcgov.com/engineering/college-trilby

