





This document is an instrument of professional service of Landmark Engineering Ltd. (L.E.L.). Landmark shall, to the fullest extent permitted by law, be held harmless and released of any damage, liability, or cost arising or allegedly arising out of unauthorized modification, change or reuse of this document by others.





Planning, Development and  
Transportation  
Current Planning  
281 North College Avenue  
P.O. Box 580  
Fort Collins, CO 80522-0580  
970.221.6750  
[www.fcgov.com/developmentreview](http://www.fcgov.com/developmentreview)

May 28, 2013

Dear Resident / Property Owner:

On Wednesday, June 12, 2013, at 5:00 p.m., in Conference Room A, 281 North College Avenue, a City of Fort Collins Hearing Officer will conduct a public administrative hearing to consider a replat of 52 existing single-family lots into 57 single-family lots in Rigden Farm Filing Six. The proposed replat will be Rigden Farm Filing 17 (see map on reverse).

The project is proposing to replat 43 alley access single-family detached lots and 9 front access single-family detached lots into 57 front access single-family detached lots. The site is zoned Low Density Mixed-Use Neighborhood (LMN) in which single-family lots are permitted subject to administrative review and approval.

We value comments from the community and your input is an important part of the City's review of this proposal. For more information regarding this proposed project, please go to <http://www.fcgov.com/developmentreview/agendas.php>. There you will find this letter, a vicinity map, and the proposed site plans. Additionally, you may find it helpful to review the Citizens' Development Review Guide, available at <http://www.fcgov.com/developmentreview/citizenreview.php>. This guide may aid you in understanding your role in the development review process and how to provide effective input at the June 12<sup>th</sup> public hearing.

Additionally, the hearing notification list is derived from official records of the Larimer County Assessor. Because of the lag time between occupancy and record keeping, or because of rental situations, a few affected property owners may have been missed. Please feel free to notify your neighbor of this pending hearing so all neighbors may have the opportunity to attend. If you are unable to attend the public hearing, but would like to provide input, written comments are welcome via U.S. mail to the address above or you may e-mail them to me at [slorson@fcgov.com](mailto:slorson@fcgov.com).

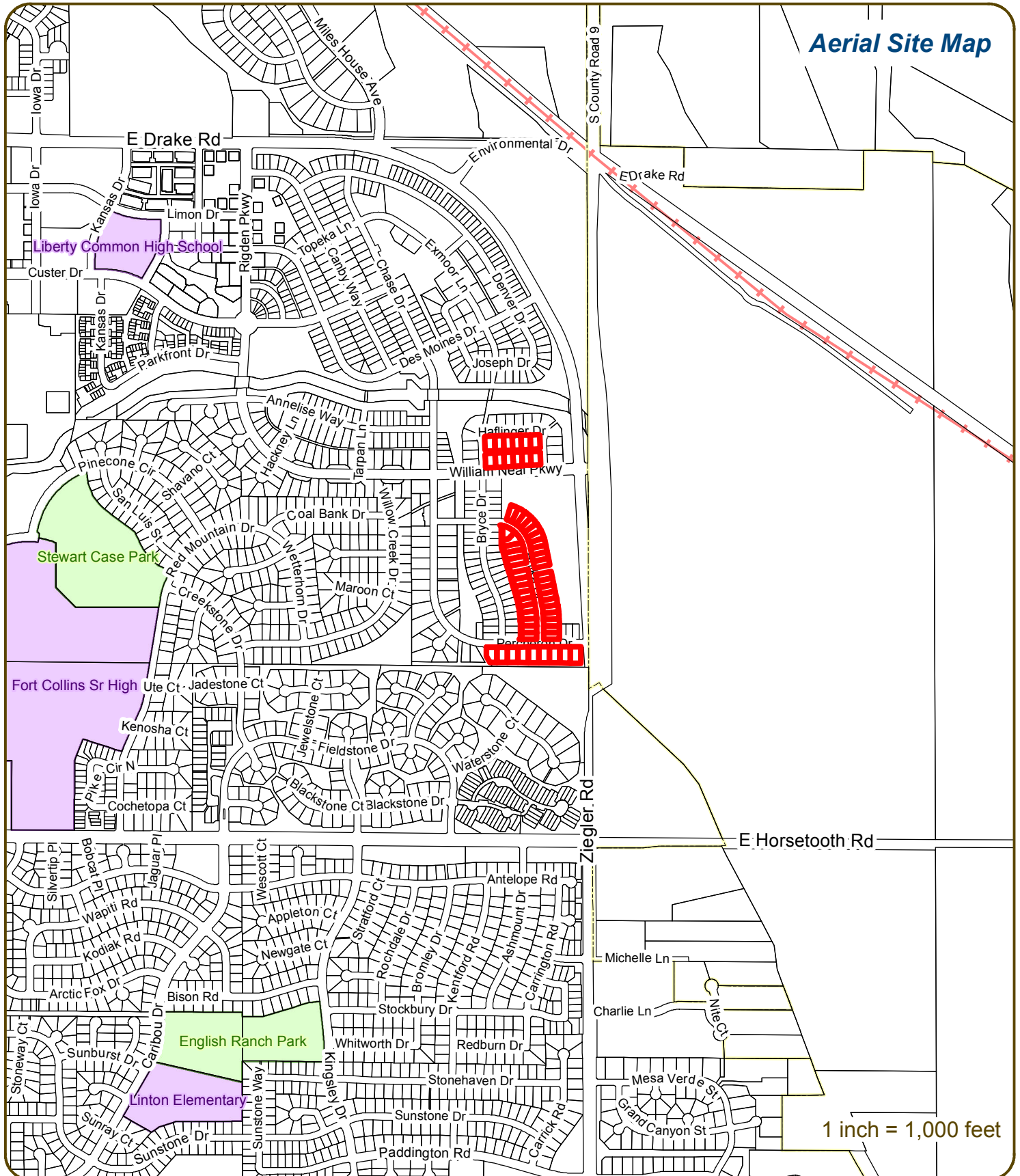
Sincerely,



Seth E. Lorson, AICP  
City Planner

*\*The City of Fort Collins will make reasonable accommodations for access to City services, programs, and activities and will make special communication arrangements for persons with disabilities. Please call 970-221-6750 for assistance.*

# Notice Map for Rigden Farm F17



These map products and all underlying data are warranted for use by the City of Fort Collins for internal purposes only, and were not designed or intended for general use by members of the public. The City makes no representation or warranty as to its accuracy, timeliness, or completeness, and in particular, its accuracy in labeling or displaying dimensions, contours, property boundaries, or placement of location of any map features thereon. THE CITY OF FORT COLLINS MAKES NO WARRANTY OF MERCHANTABILITY OR WARRANTY FOR FITNESS OF USE FOR PARTICULAR PURPOSE, EXPRESSED OR IMPLIED, WITH RESPECT TO THESE MAP PRODUCTS OR THE UNDERLYING DATA. Any uses of these map products, map applications, or data, accepts same AS IS, WITH ALL FAULTS, and assumes all responsibility of the use thereof, and further covenants and agrees to hold the City harmless from and against all damage, loss, or liability arising from any use of this map product, in consideration of the City's having made this information available. Independent verification of all data contained herein should be obtained by any users of these products, or underlying data. The City disclaims, and shall not be held liable for any all damage, loss, or liability, whether direct, indirect, or consequential, which arises or may arise from these map products or the use thereof by any person or entity.

