



# Funshine Child Care Project

---

5137 S. College Avenue



# The Need For Child Care

- Larimer County and the early childhood community is well aware of the shortage of child care options.
- 7,000 children under 6 are without licensed care.
- That is 49% of all children with both parents in the workforce.
- Our lack of adequate child care affects employers in all industries across Larimer County, as parents cannot work when they do not have safe and stable care for their children.
- This has a major impact on families.
- Solutions will require the joint effort of businesses, governmental agencies, educational institutions, and the early childhood sector. **YOU CAN HELP!**

# Our History

- Funshine opened in December of 2007
- That is almost 12 years of affordable, convenient, quality care for our community and for Larimer County
- What we offer:
  - Licensed Care
  - Well Qualified Teachers
  - Convenience: Drop-In Care, Parents pay only for what they need
  - Convenient Hours: Days, Nights, and Weekends
- Why this is important: **THERE IS NO OTHER CHILD CARE CENTER THAT OFFERS THIS! WE ARE ONE OF A KIND!**



# Our Demographics

We are here to meet the needs of the families. Our families utilize us for many reasons including:

- Working
- Medical appointments
- Errands
- Date nights



When parents complain about being limited because they have to take their kids with them everywhere - we give them a break!

Self Care helps everyone!



# Why Move?

- To expand services
- Accommodations for both full time and drop in
- The needs for child care has changed since we opened 12 years ago
  - Economy has shifted - Cost of living has gone up, but wages have not matched it
  - Two parents may need to work to support their household
  - We need to be able to offer both a part time drop-in AND a full time option
  - As a drop-in child care only, we are limited to no more than 6 hours per day with a maximum of 15 hours per week. This does not serve families who need a full work day of childcare.
  - At our current location, we lack the outdoor space that enables us to run full time.

# Why Move Continued

- To meet state requirements:
  - To offer outdoor space for the kids.
  - Our current location has a Conditional Waiver that will expire next May. At that point we would need to close our doors.
- We were set to close our door permanently on September 14th, but families took action and got the Coloradoan released a front page news article.

**And then a MIRACLE HAPPENED! Drake showed up at our door.**

# What to Expect

- Timeline: 6 to 9 month for Zoning Process and short construction process as most work is done indoors
- What we will be changing to meet the zoning requirements:
  - Two more bathrooms
  - Two walls indoors
  - Laundry area
  - Two outdoor play areas
  - Trash enclosure
- Proposal of what we plan to do (see next slide)

# Proposal

Use property as a Child Care and Early Learning Center. Currently the building is unoccupied. Previous uses included the Larimer Humane Society and prior a child care facility. Proposal is to change to full-time Child Care Center usage model.

- Internal remodel to meet all requirements for a full-time child care facility including restroom and sink addition or modification and dividers between classrooms for toddlers, infants and pre-schoolers.
- External modification to add fenced in playground areas to meet outdoor requirements.



# Proposal



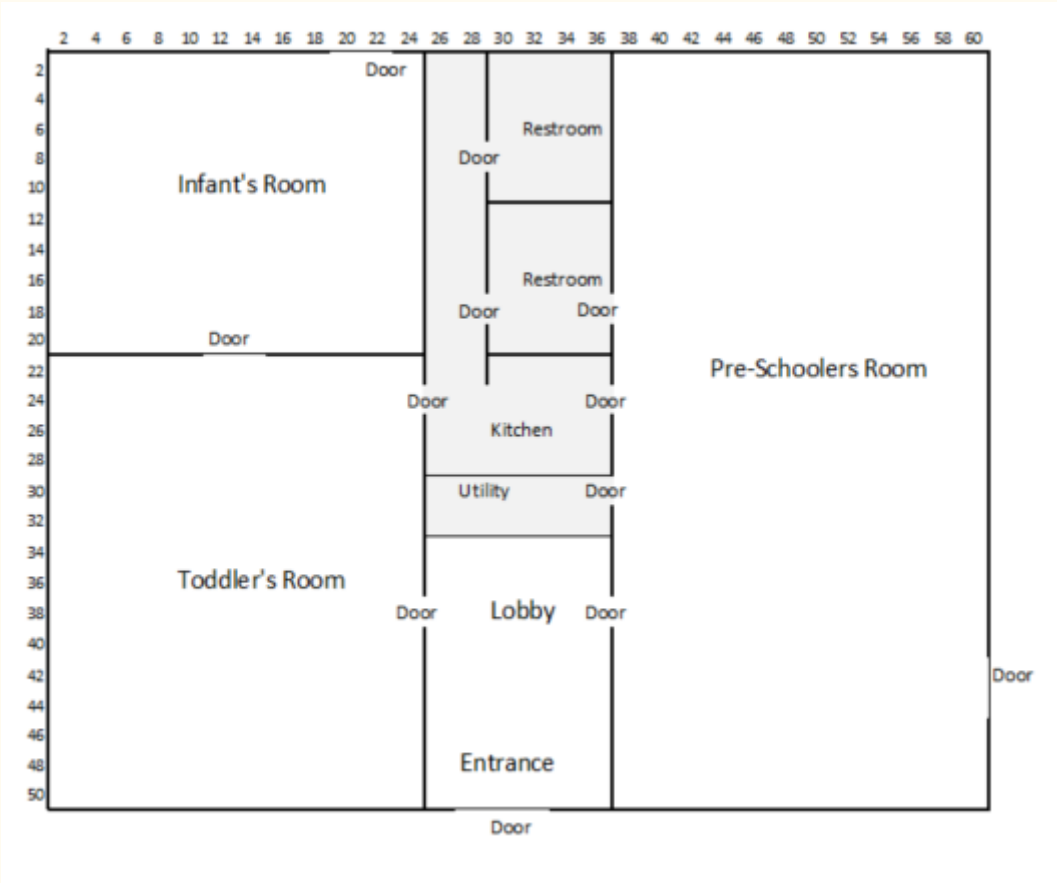
# Proposal

**South Side of Building:** Re-establish playground in unlandscaped area below.



# Proposal

Indoors:



# Why This Location is Ideal

- Catch commuters
- Good for Redtail Ponds
  - Building no longer sitting vacant
  - Bring younger and more families to that area
  - Convenient child care option for nearby employees
- Easy accessibility from 287
- Proximity to current location - easy transition for our existing families

# How You, a Neighbor, Can Make a Difference

- JUST SAY YES
- Help provide the community with child care/ education
- Provide helpful feedback
- Let us know ways that we can be great neighbors to you



Open to Comments