



General Government Overview

CityWorks 101

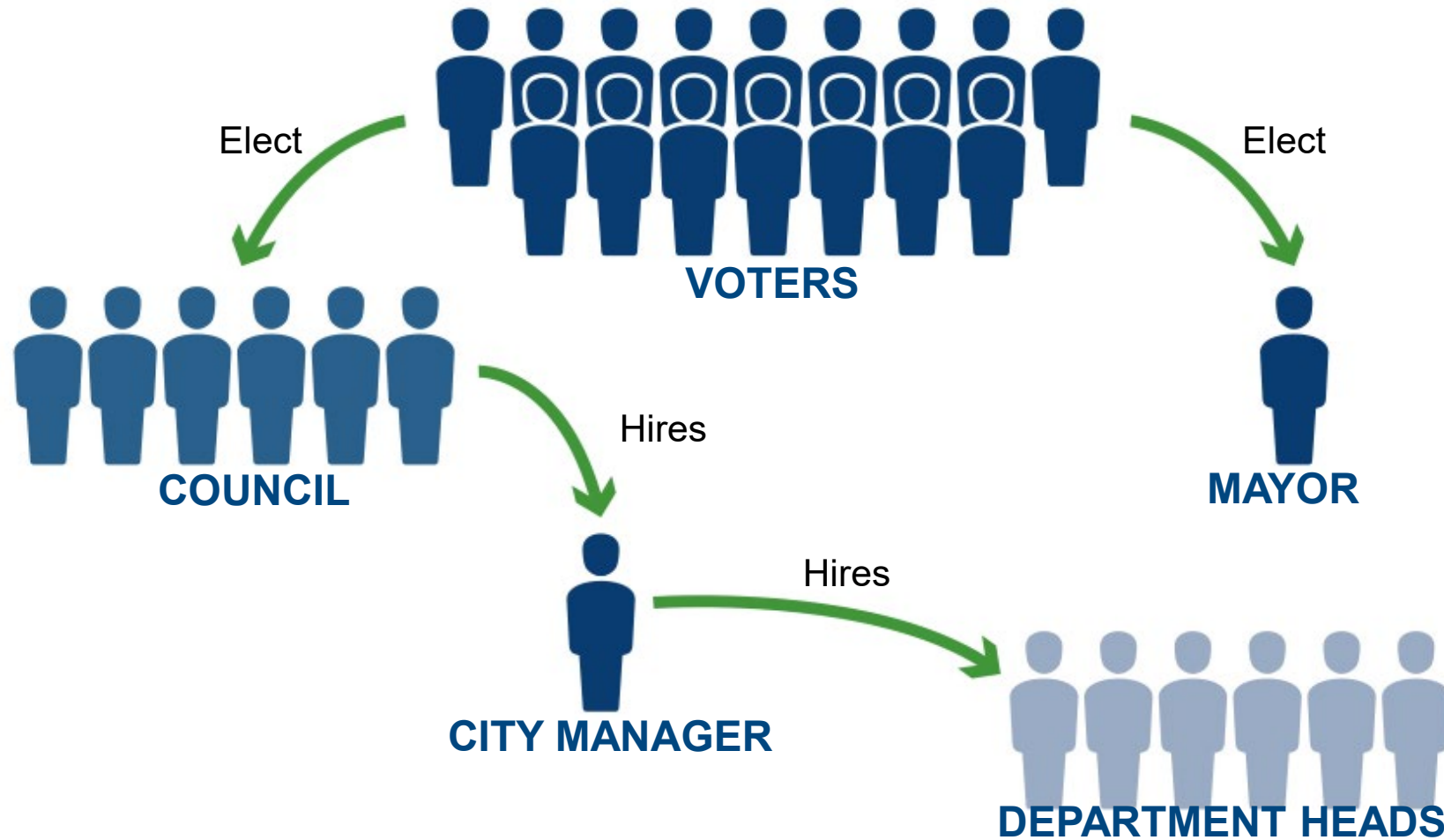
Tyler Marr, Assistant City Manager

9-15-2021



- Population: 178,000
- Home to CSU: 30,000 Students
- Median Age: 29.3
- College Degree or Higher: 52.5%
- Vibrant Downtown
- Top Place to Live, Retire, or Start a Business





Mayor & City Council Members



Jeni Arndt
Mayor



Susan Gutowsky
District 1



Julie Pignataro
District 2



Tricia Canonico
District 3



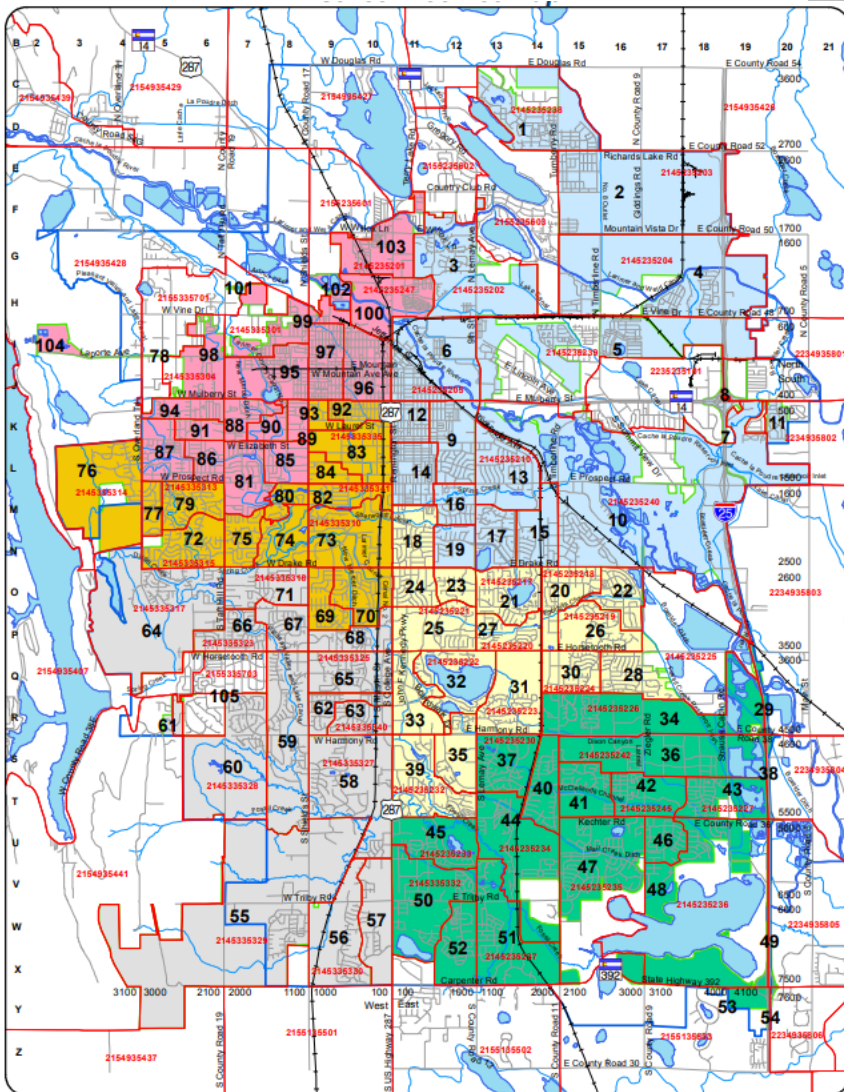
Shirley Peel
District 4



Kelly Ohlson
District 5



Emily Francis
Mayor Pro Tem, District 6



Susan Gutowsky
District 1



Julie Pignataro
District 2



Tricia Canonico
District 3



Shirley Peel
District 4



Kelly Ohlson
District 5



Emily Francis
Mayor Pro Tem, District 6

Council Appointed/Direct Reports



Kelly DiMartino
Interim City Manager



Jill Hueser
Chief Municipal Judge



Carrie Daggett
City Attorney

VISION

To provide world-class municipal services through operational excellence and a culture of innovation.

MISSION

Exceptional service for an exceptional community.

VALUES

- Collaboration
- Excellence
- Integrity
- Outstanding Service
- Safety & Wellbeing
- Stewardship

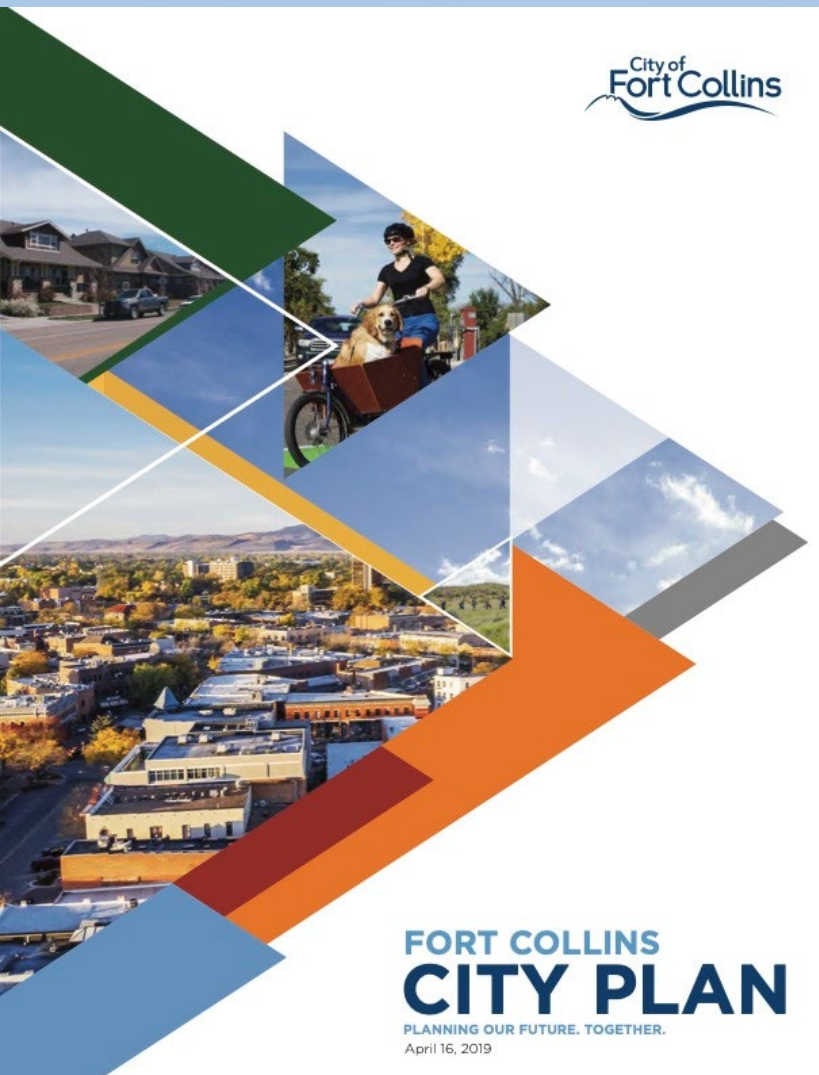


Approx. 2,400 FTEs

- Police Services
- Parks
- Transportation
- Recreation
- Cultural Services
- Neighborhood Services
- Utilities: Water, Wastewater, Stormwater, Light & Power, Broadband
- Natural Areas







QUESTIONS?

