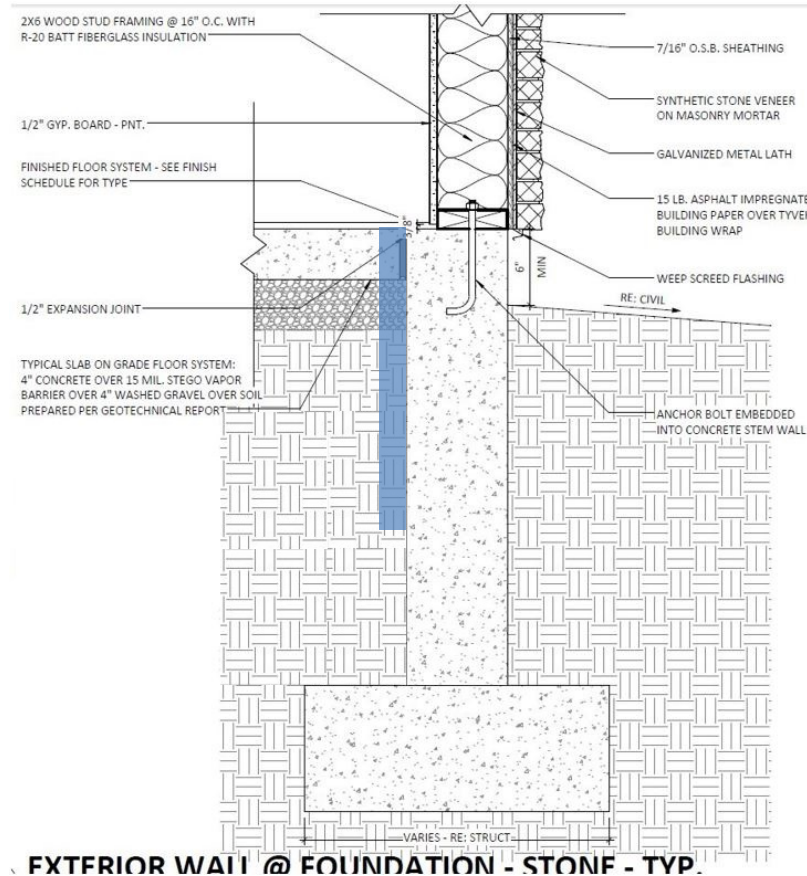
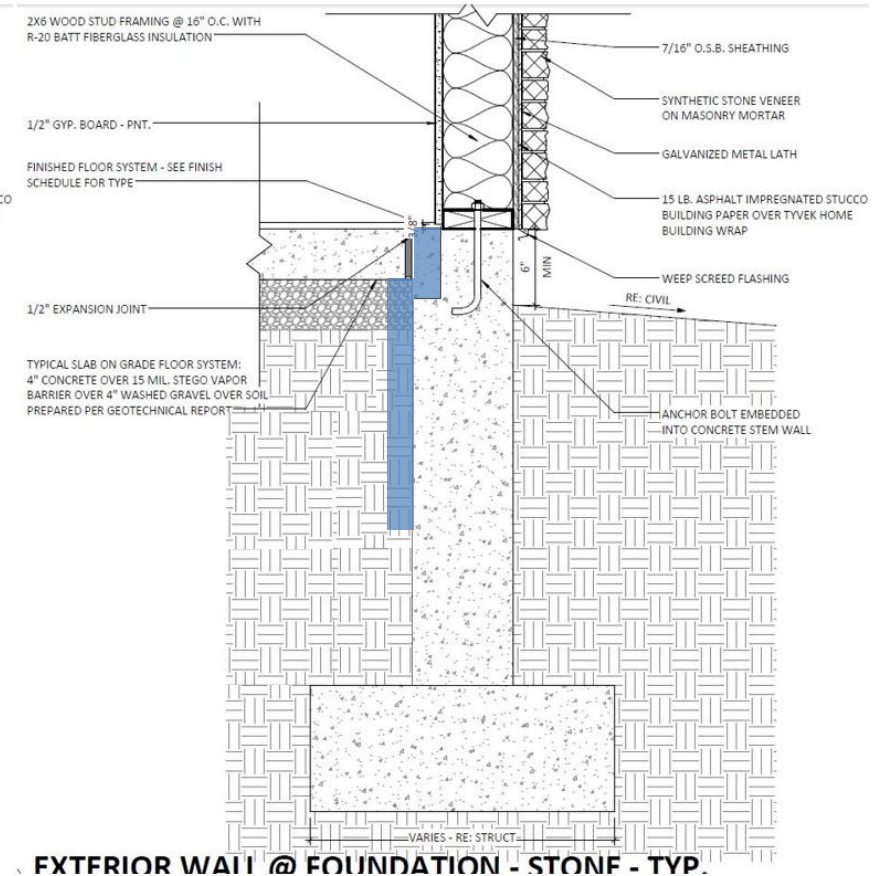


An installation guide to slab edge insulation that meets the mandatory 2018 IECC code requirements C402.2.4 and R402.2.10. The blue below represents R-10 insulation.

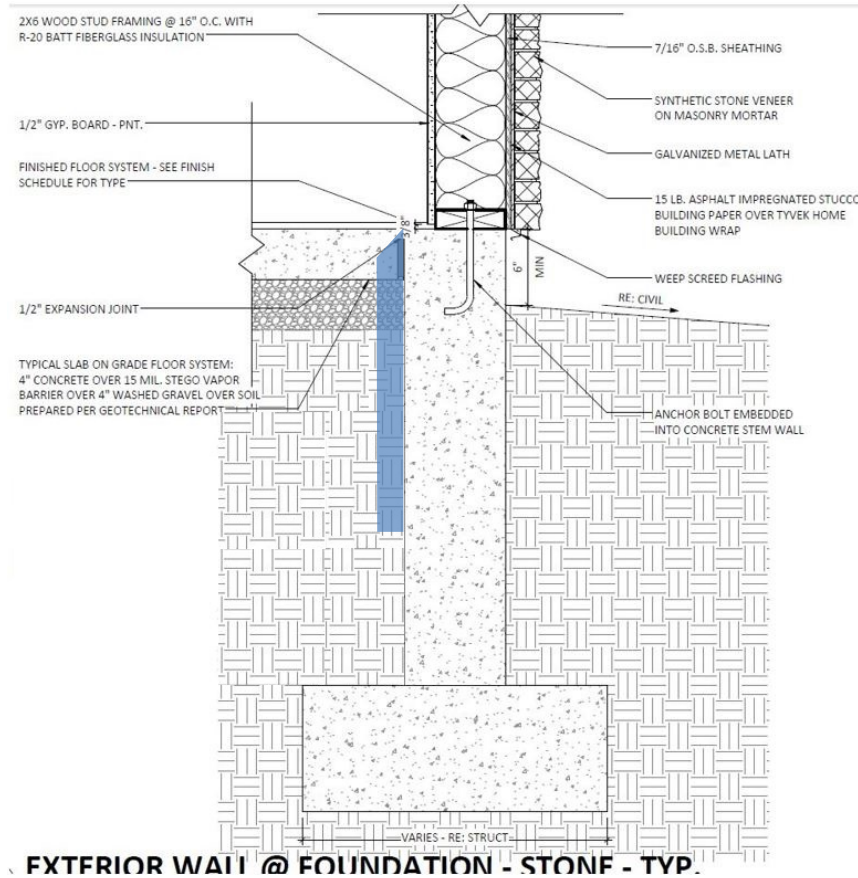


①

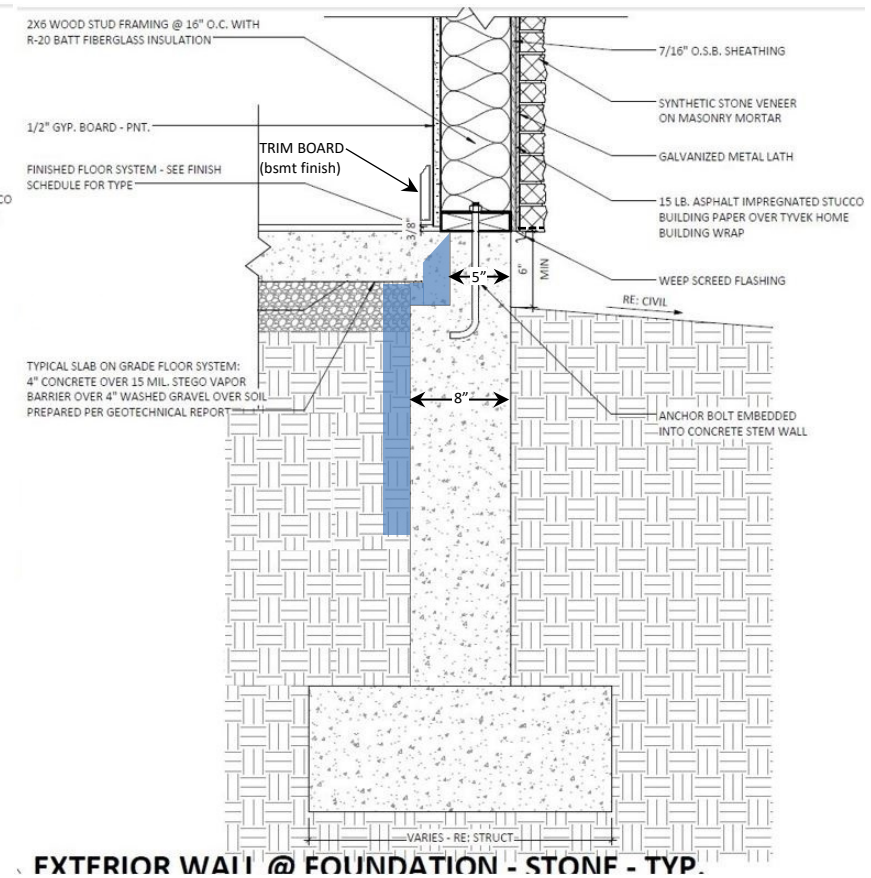


②

An installation guide to slab edge insulation that meets the mandatory 2018 IECC code requirements C402.2.4 and R402.2.10. The blue below represents R-10 insulation.



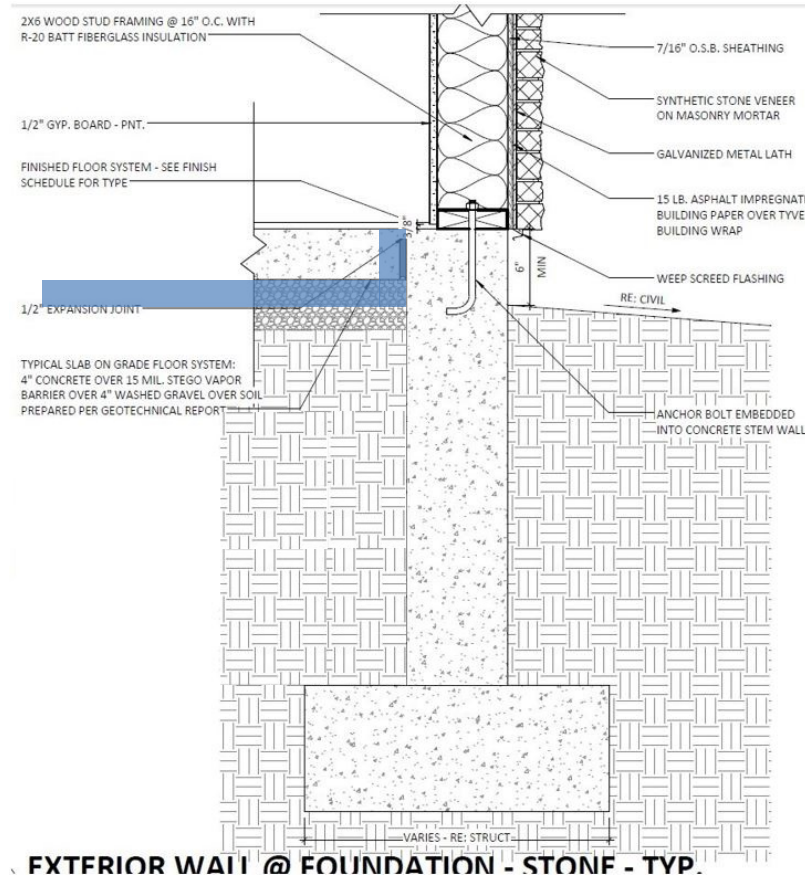
③



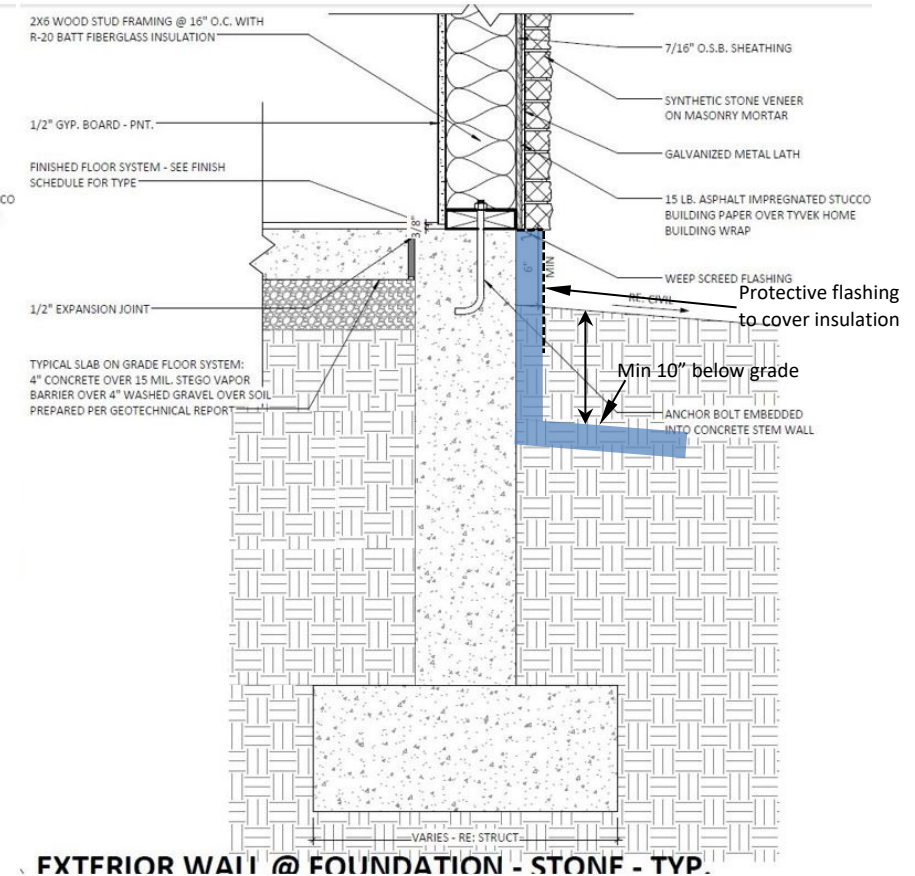
④

Note: Consult with your structural engineer regarding reducing width of stem wall to 5".

An installation guide to slab edge insulation that meets the mandatory 2018 IECC code requirements C402.2.4 and R402.2.10. The blue below represents R-10 insulation.

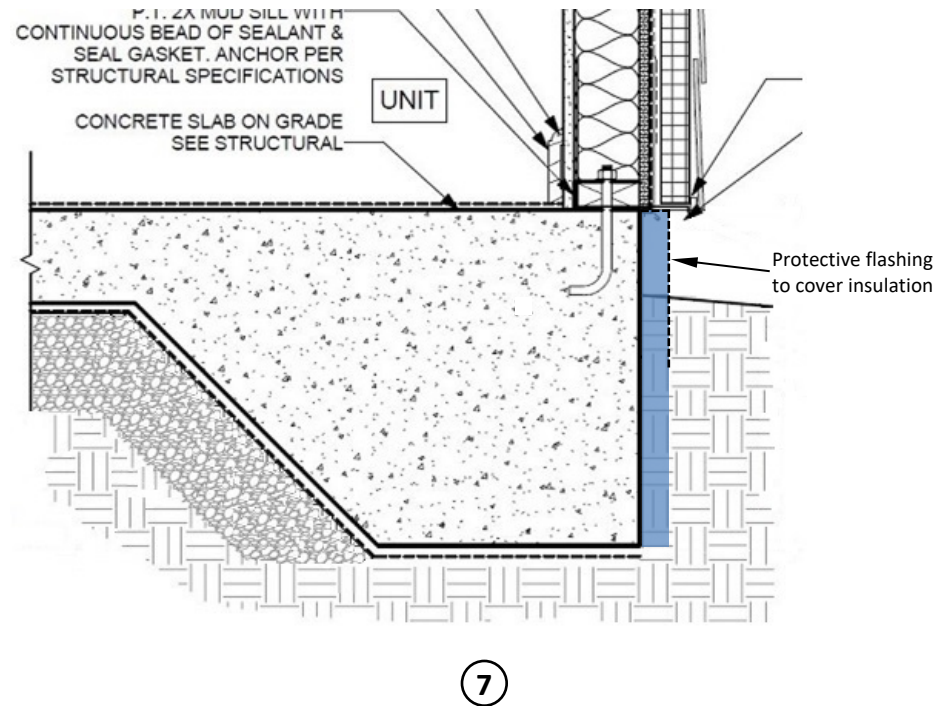


5

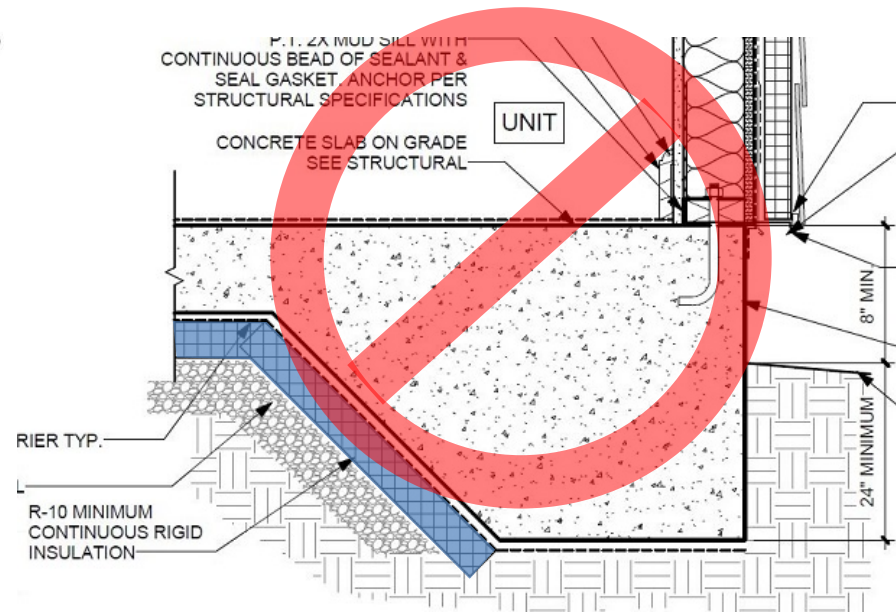
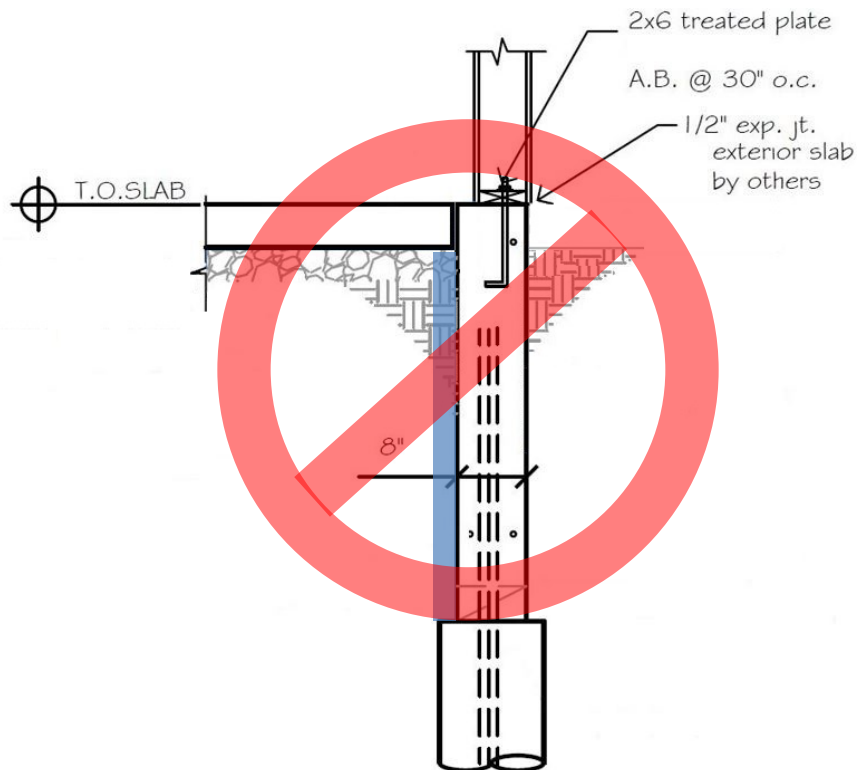


6

An installation guide to slab edge insulation that meets the mandatory 2018 IECC code requirements C402.2.4 and R402.2.10. The blue below represents R-10 insulation.



An installation guide to slab edge insulation that meets the mandatory 2018 IECC code requirements C402.2.4 and R402.2.10. The blue below represents R-10 insulation.



Drawings directly above: Insulation does not meet minimum code requirement.

R402.2.10 Slab-on-grade floors. ...the insulation shall extend downward from the top of the slab on the outside or inside of the foundation wall.