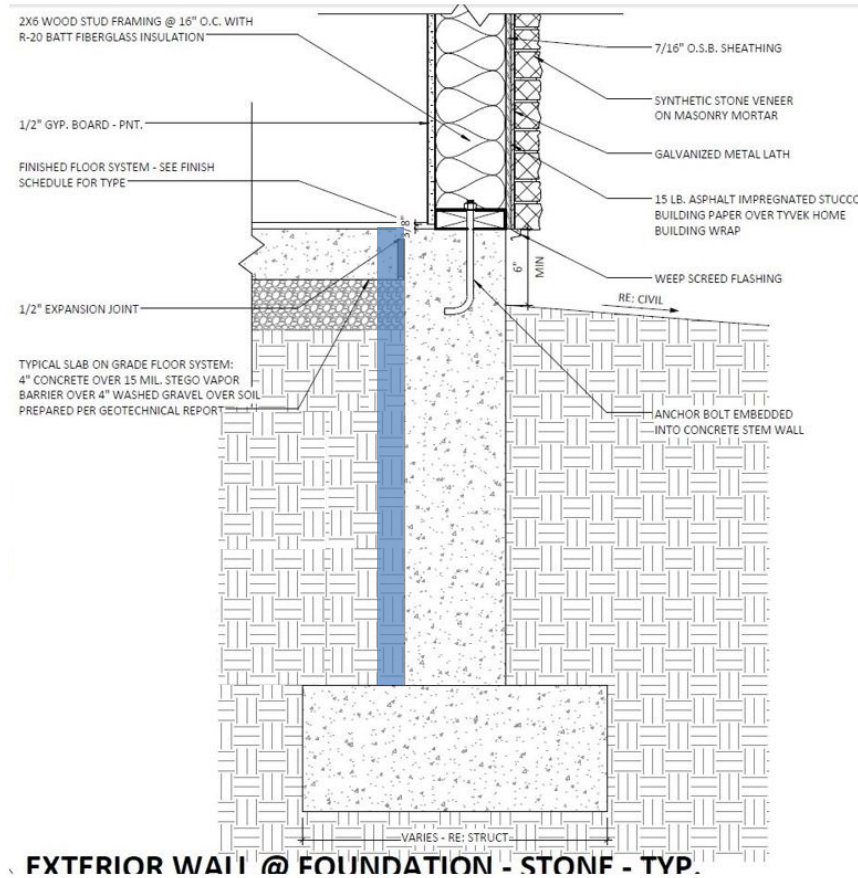
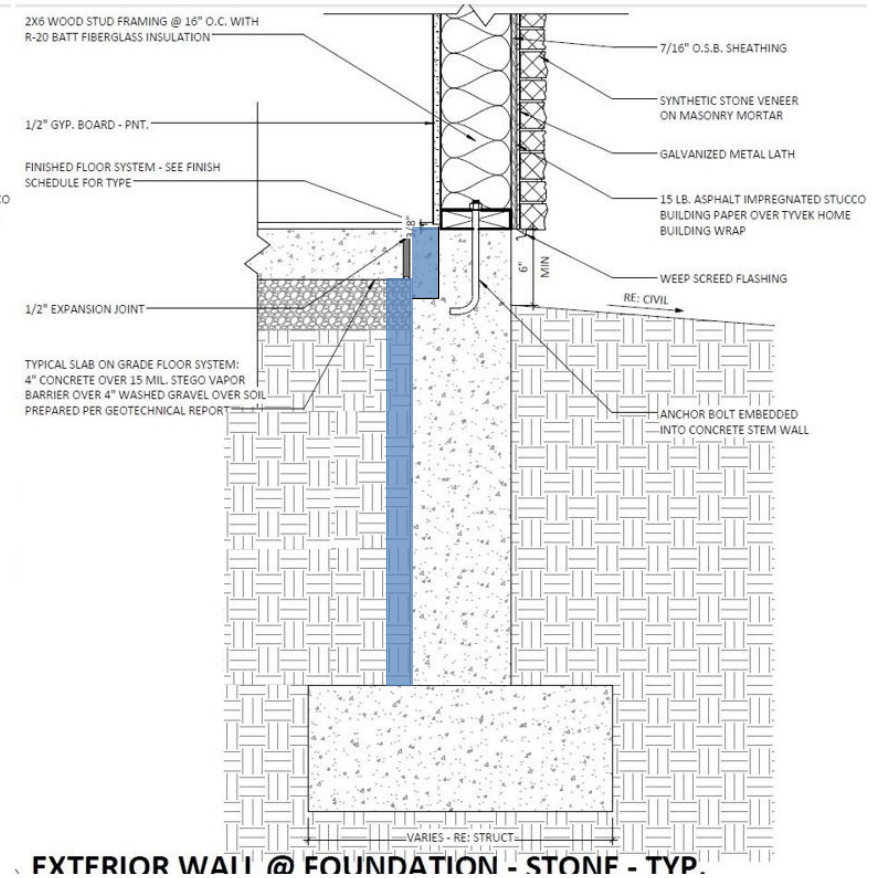


A guide to slab edge insulation install that meets the mandatory 2018 IECC code requirements C402.2.4 and R402.2.10. The blue below represents R-10 insulation.

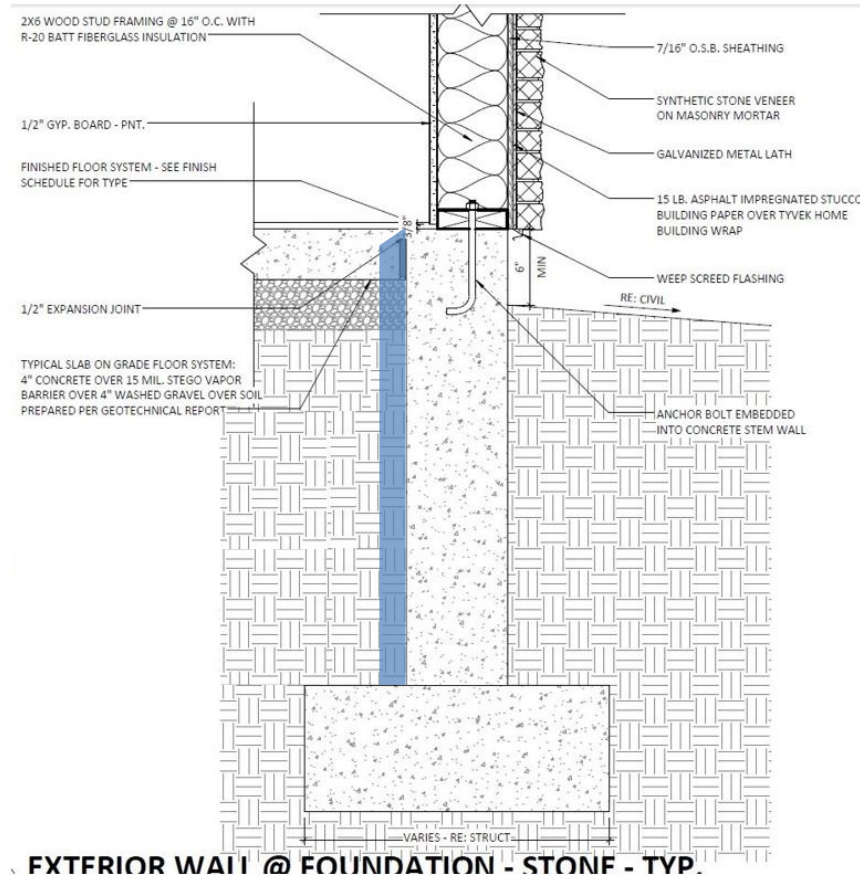


①

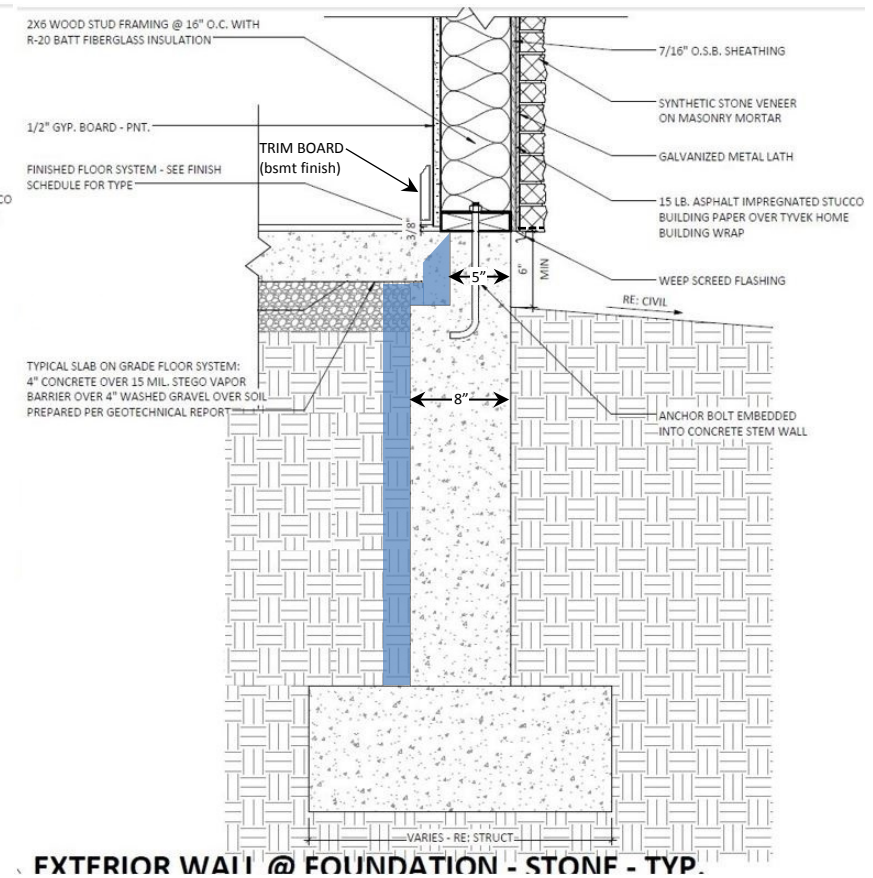


②

A guide to slab edge insulation install that meets the mandatory 2018 IECC code requirements C402.2.4 and R402.2.10. The blue below represents R-10 insulation.



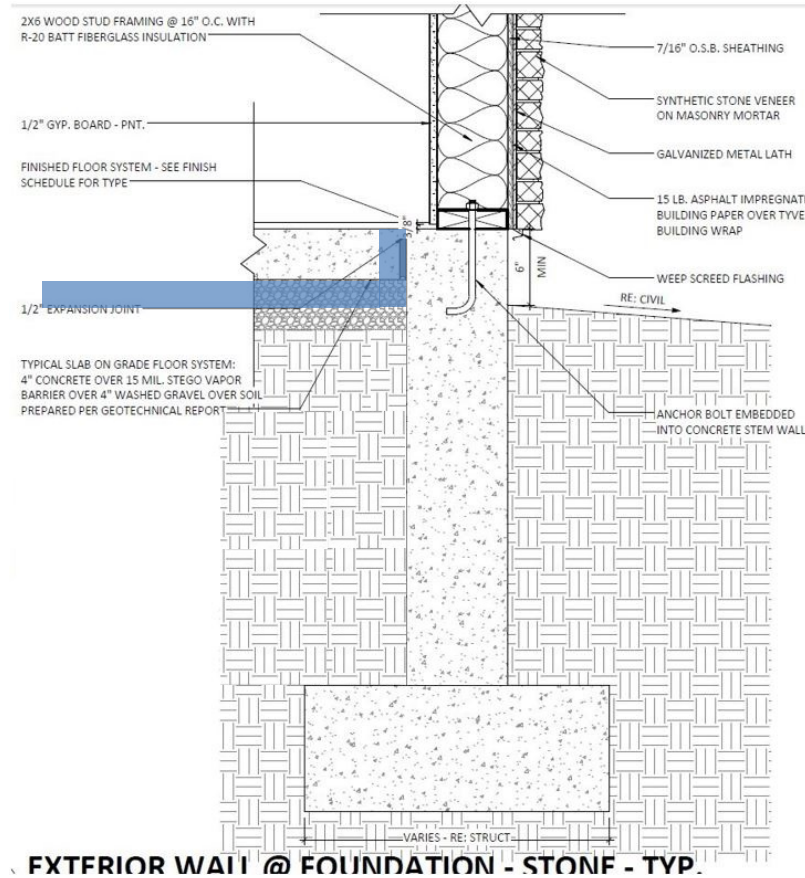
③



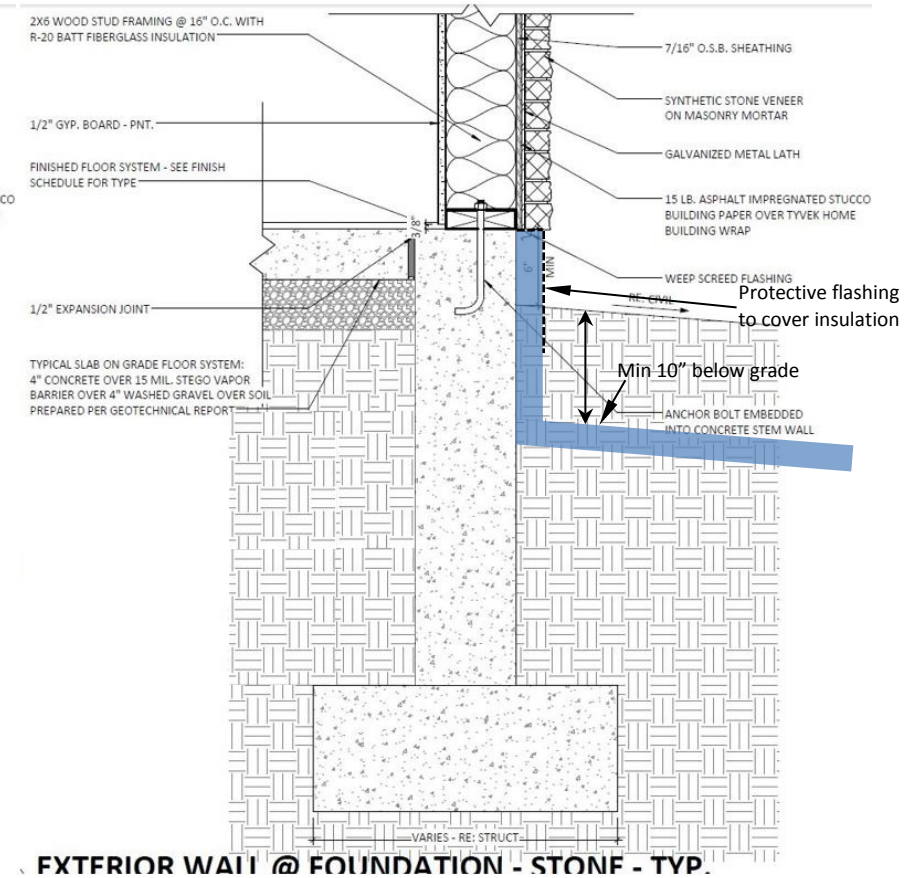
④

Note: Consult with your structural engineer regarding reducing width of stem wall to 5".

A guide to slab edge insulation install that meets the mandatory 2018 IECC code requirements C402.2.4 and R402.2.10. The blue below represents R-10 insulation.

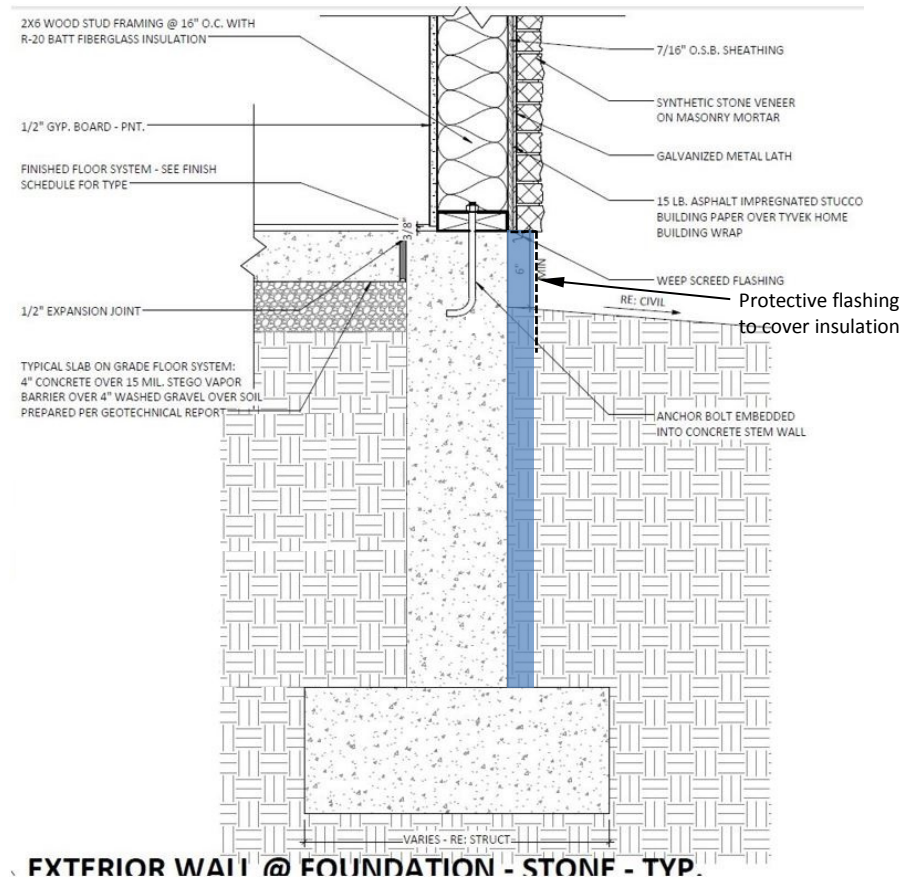


5



6

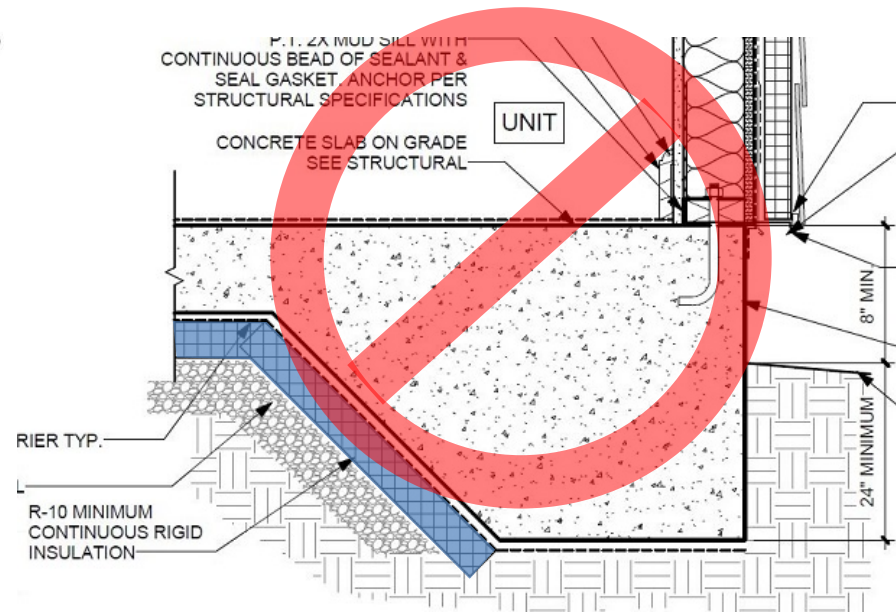
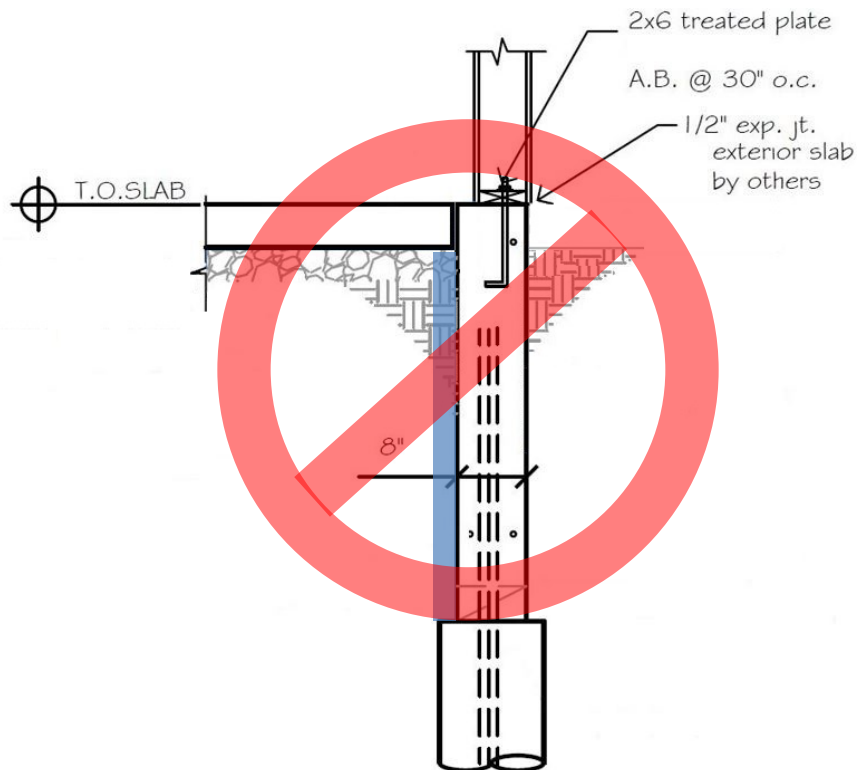
A guide to slab edge insulation install that meets the mandatory 2018 IECC code requirements C402.2.4 and R402.2.10. The blue below represents R-10 insulation.



7



A guide to slab edge insulation install that meets the mandatory 2018 IECC code requirements C402.2.4 and R402.2.10. The blue below represents R-10 insulation.



Drawings directly above: Insulation does not meet minimum code requirement.

R402.2.10 Slab-on-grade floors. ...the insulation shall extend downward from the top of the slab on the outside or inside of the foundation wall.