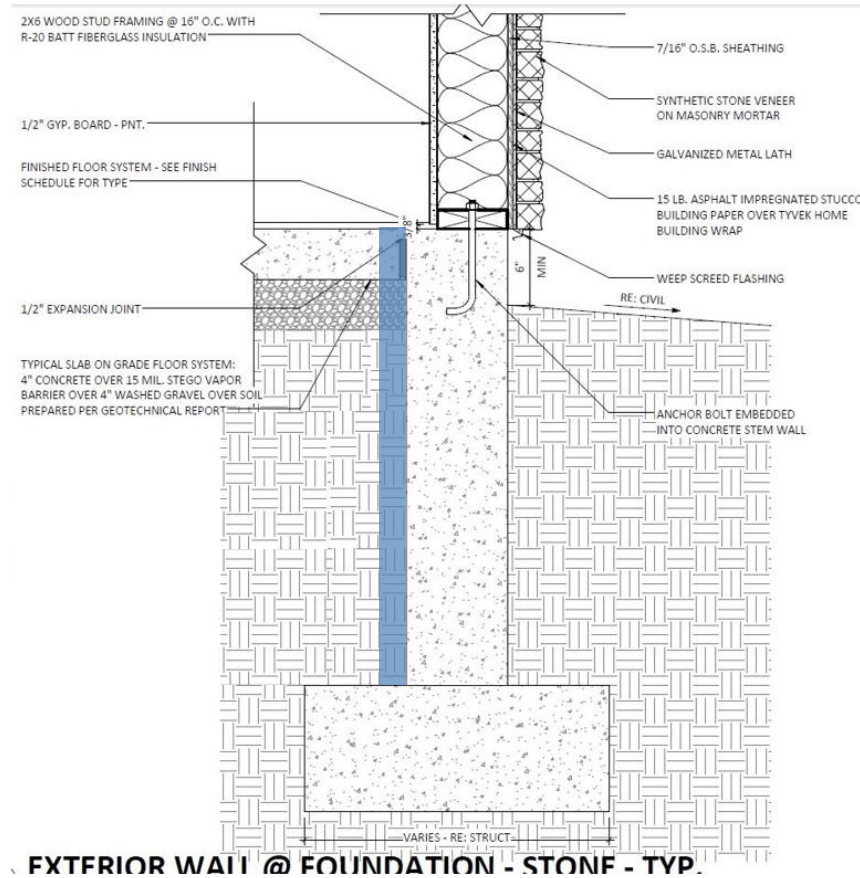
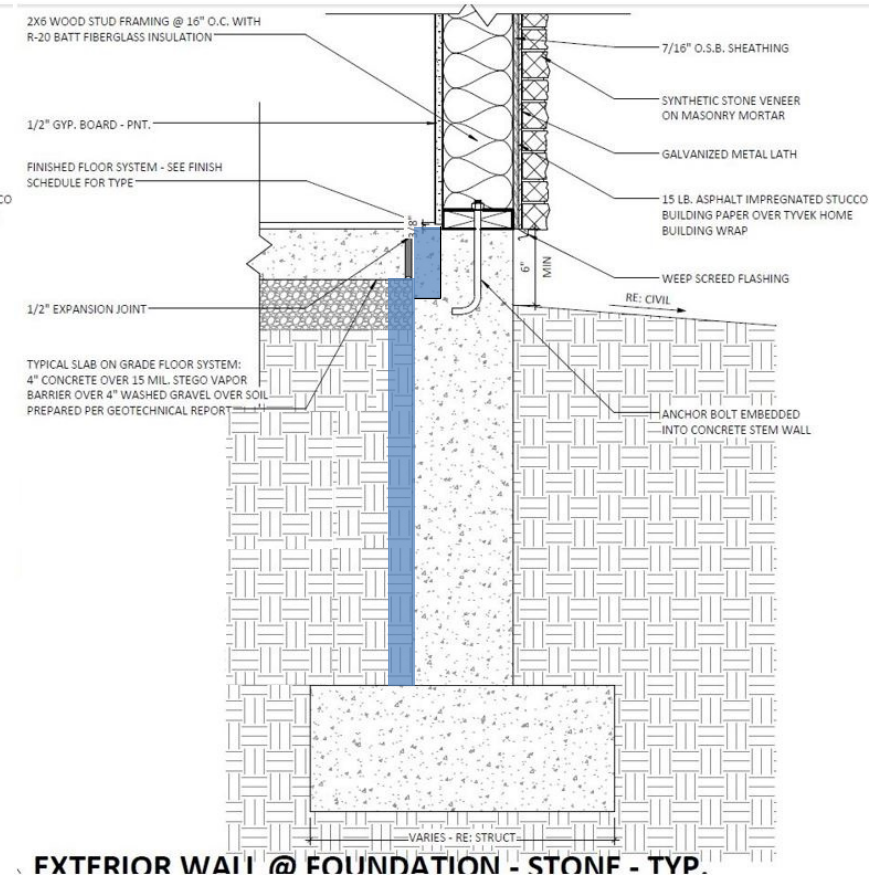


A guide to slab edge insulation install that meets the mandatory 2018 IECC code requirements C402.2.4 and R402.2.10. The blue below represents R-10 insulation.

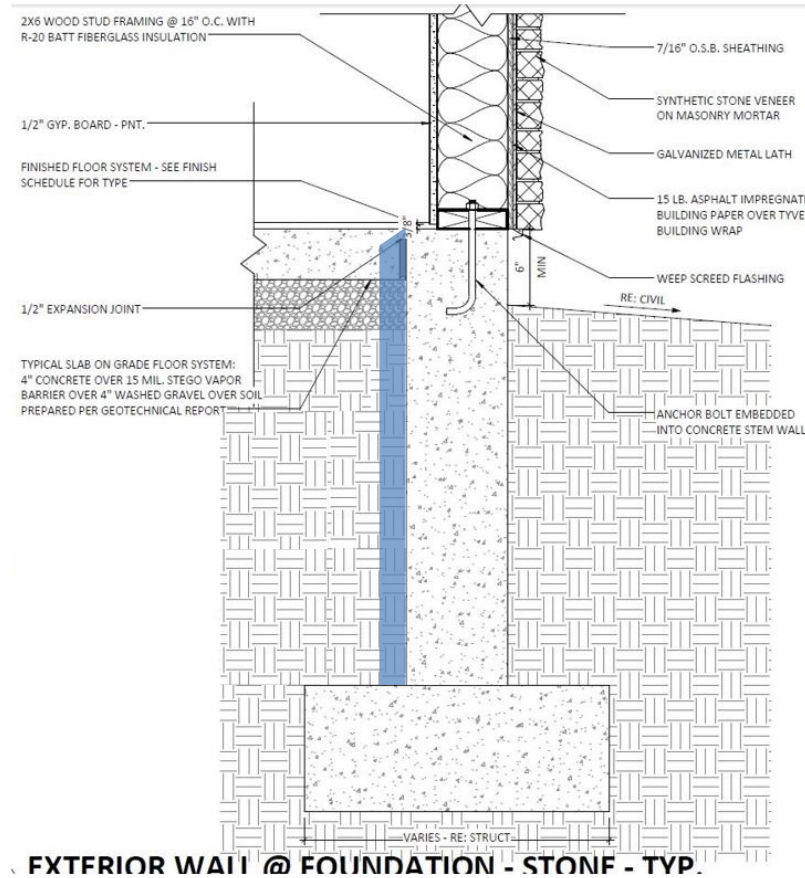


①

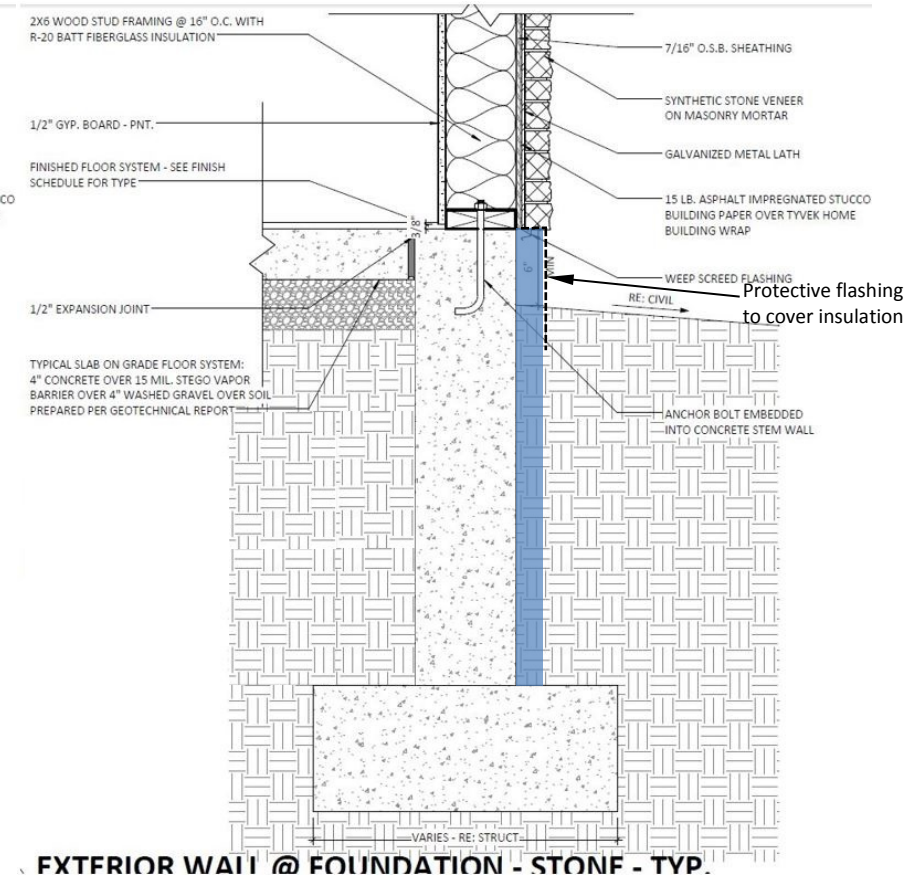


②

A guide to slab edge insulation install that meets the mandatory 2018 IECC code requirements C402.2.4 and R402.2.10. The blue below represents R-10 insulation.

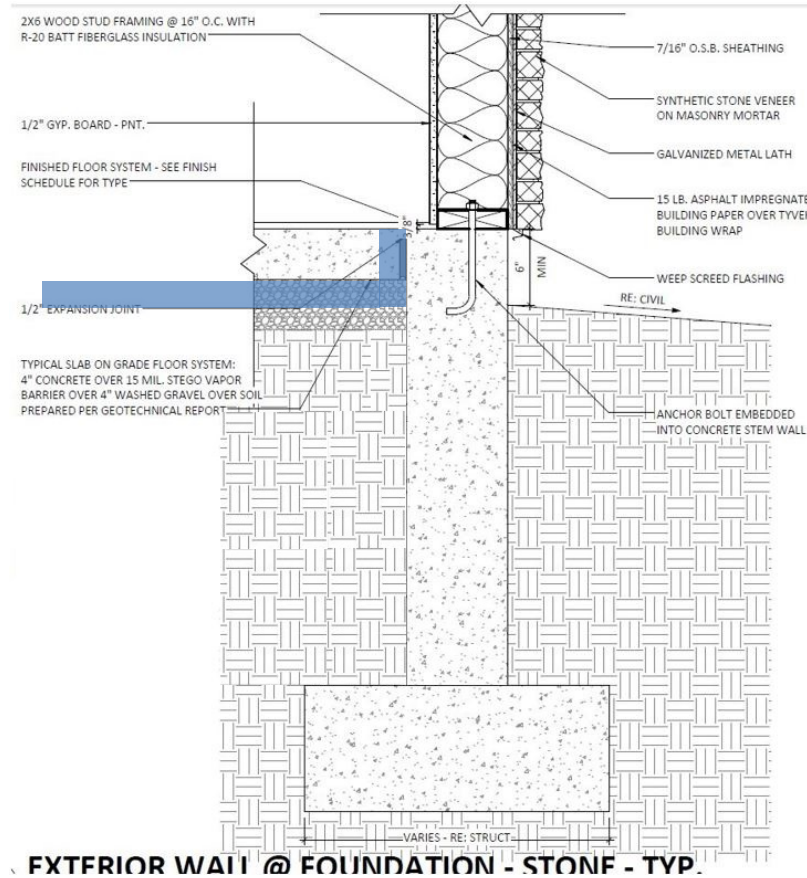


3

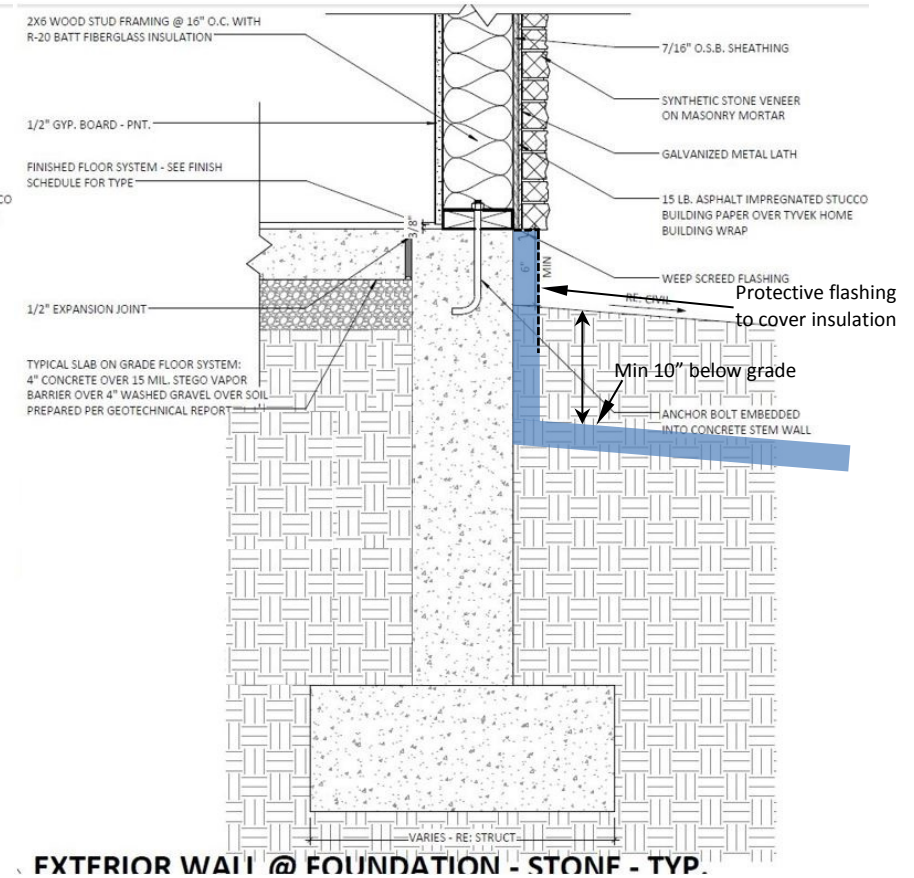


4

A guide to slab edge insulation install that meets the mandatory 2018 IECC code requirements C402.2.4 and R402.2.10. The blue below represents R-10 insulation.



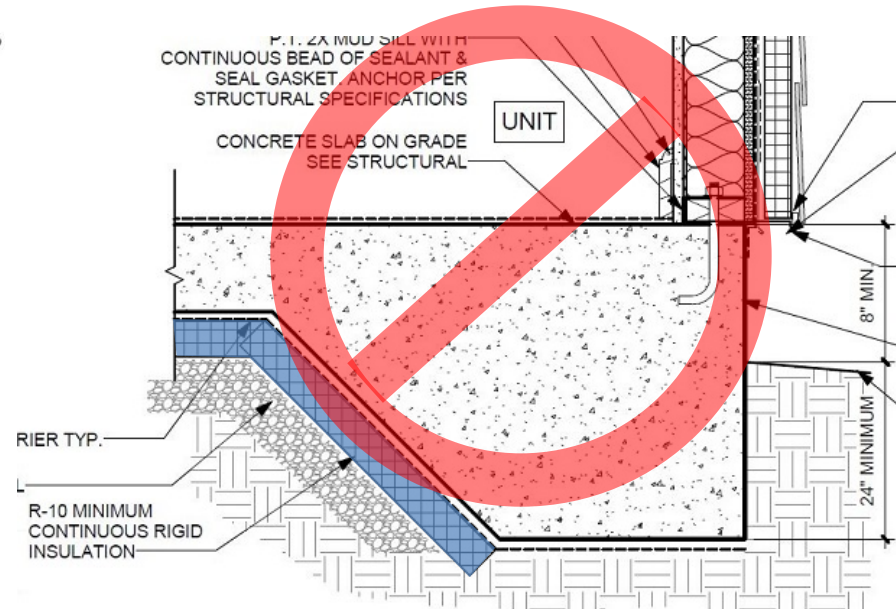
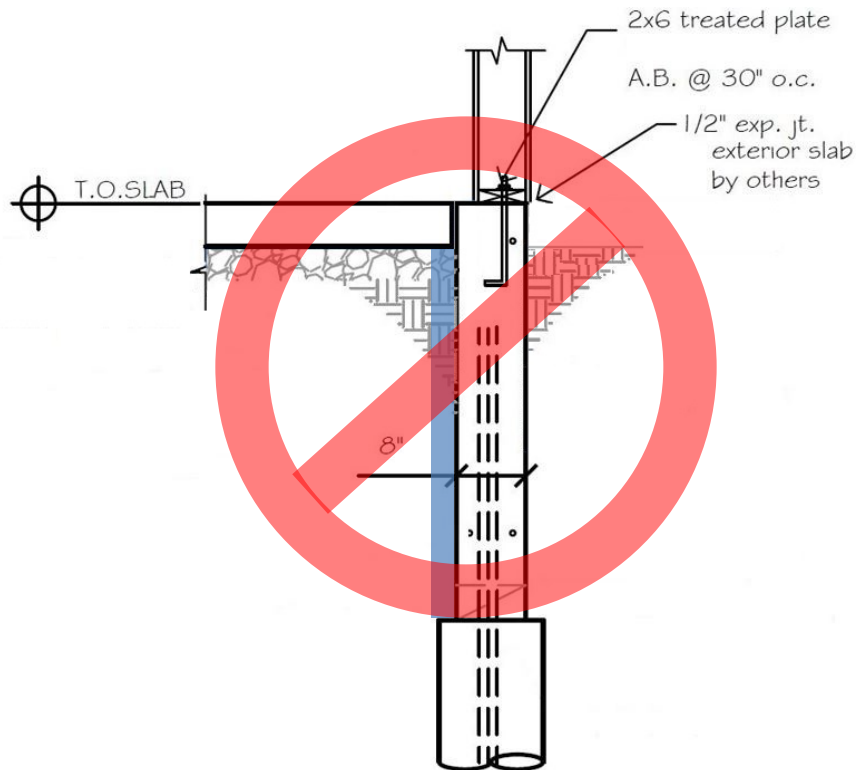
5



6



A guide to slab edge insulation install that meets the mandatory 2018 IECC code requirements C402.2.4 and R402.2.10. The blue below represents R-10 insulation.



Drawings directly above: Insulation does not meet minimum code requirement.

**R402.2.10 Slab-on-grade floors.** ...the insulation shall extend downward from the top of the slab on the outside or inside of the foundation wall.