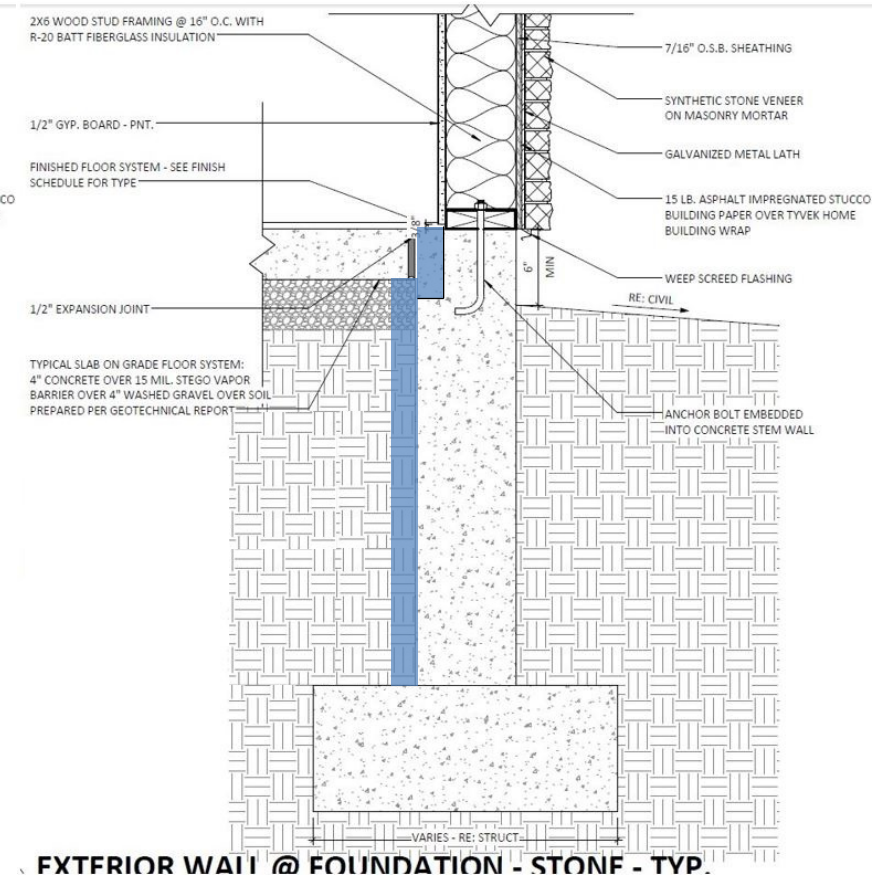
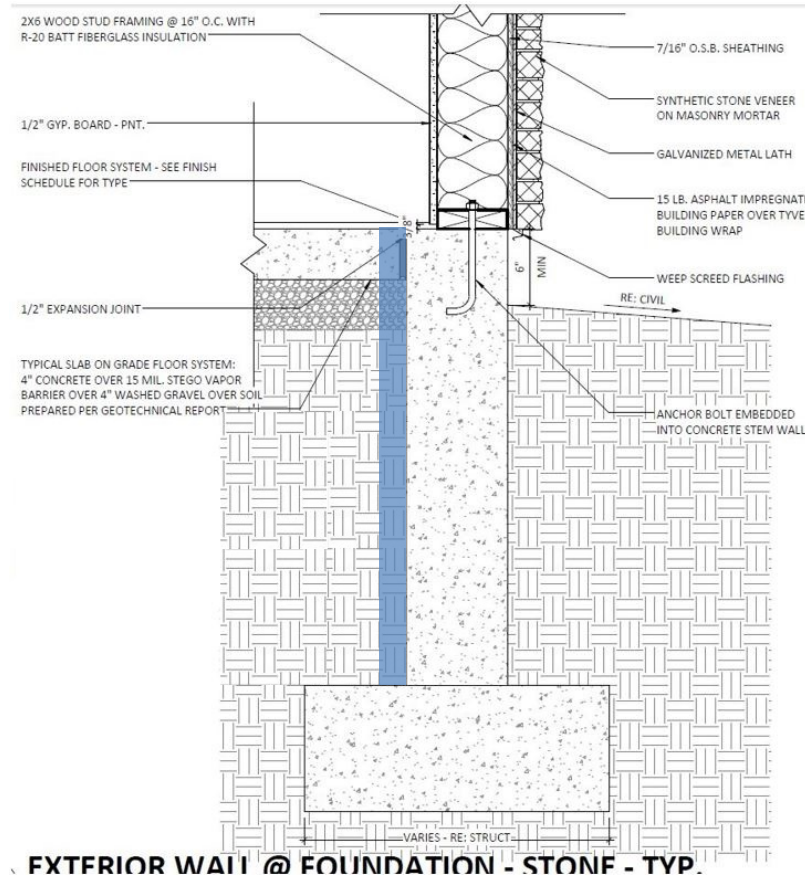
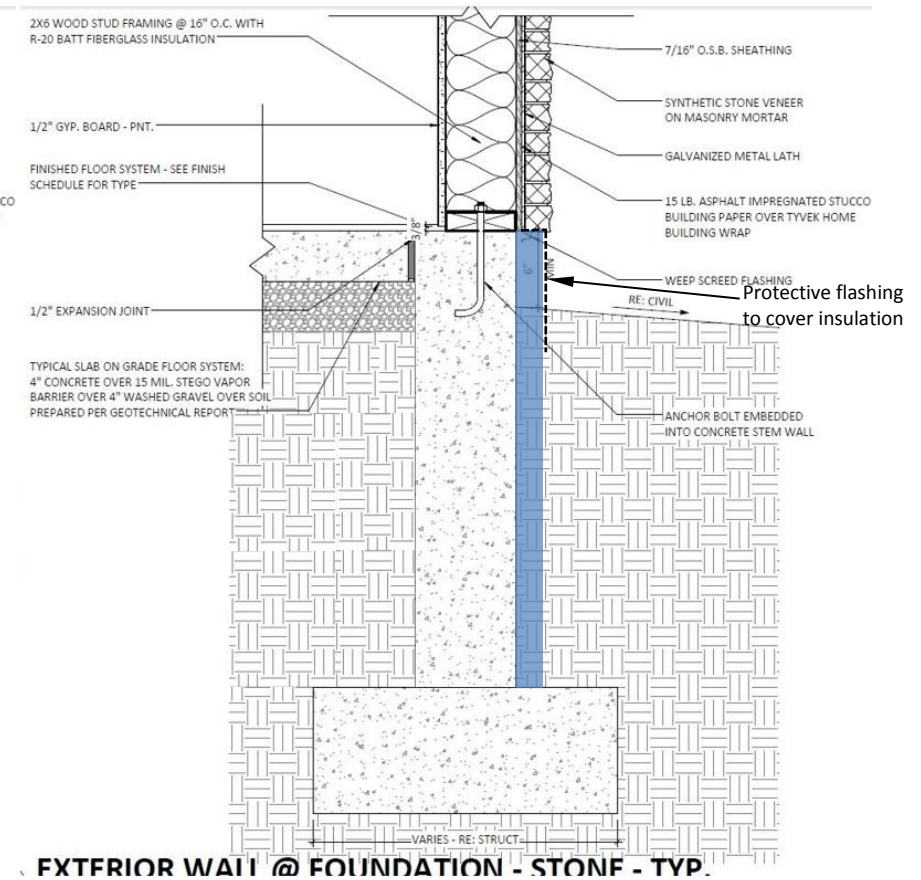
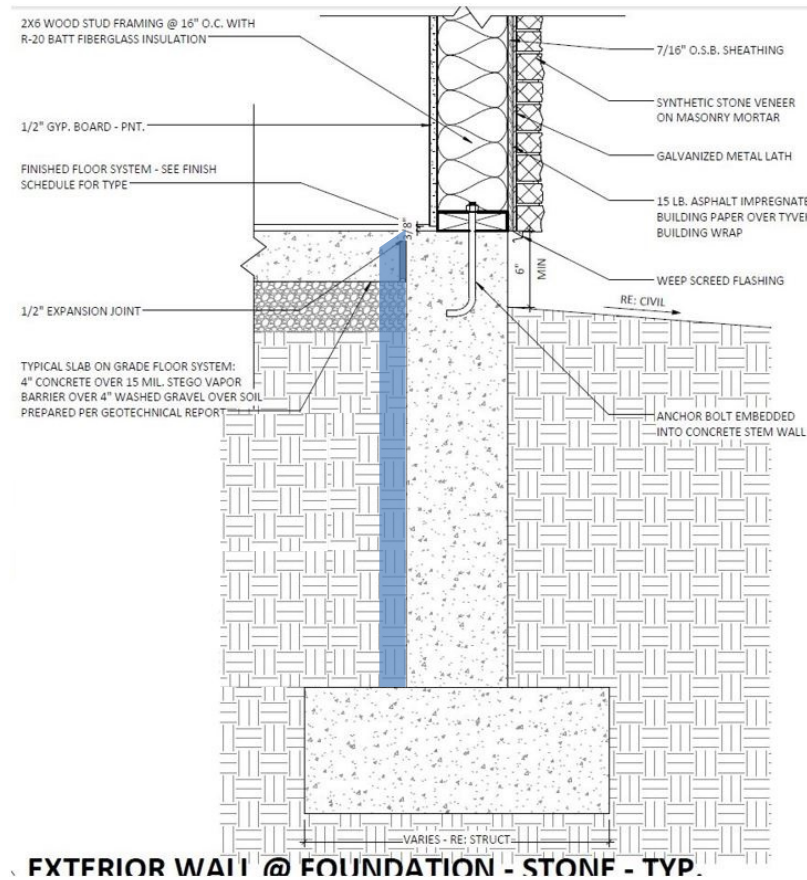


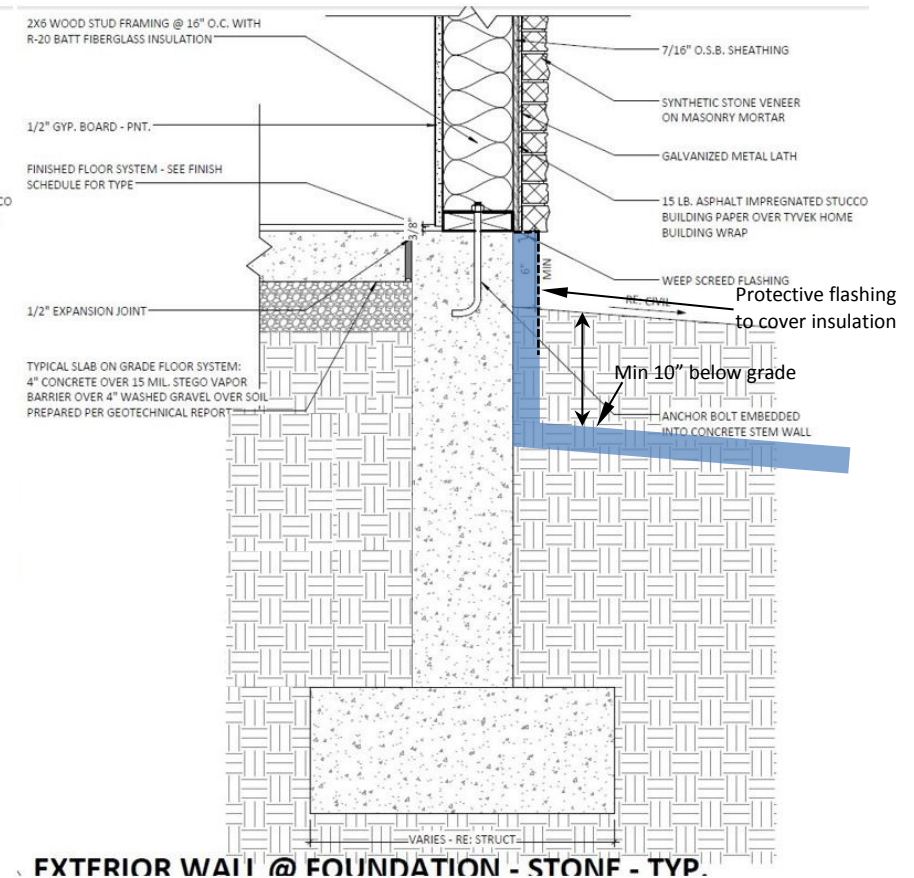
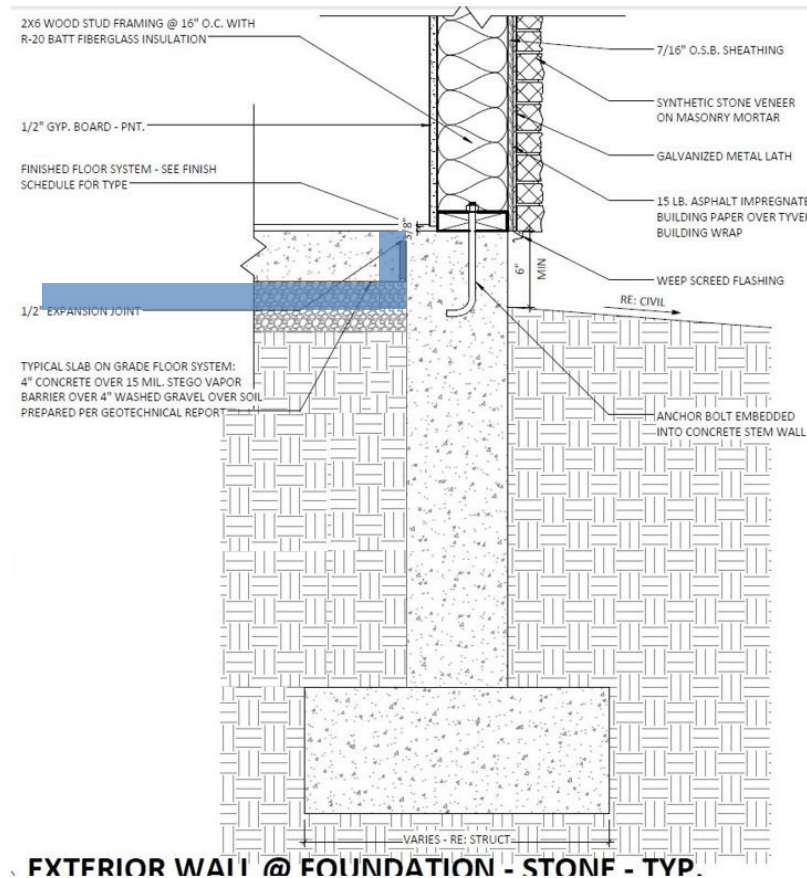
A guide to slab edge insulation install that meets the mandatory 2018 IECC code requirements C402.2.4 and R402.2.10. The blue below represents R-10 insulation.



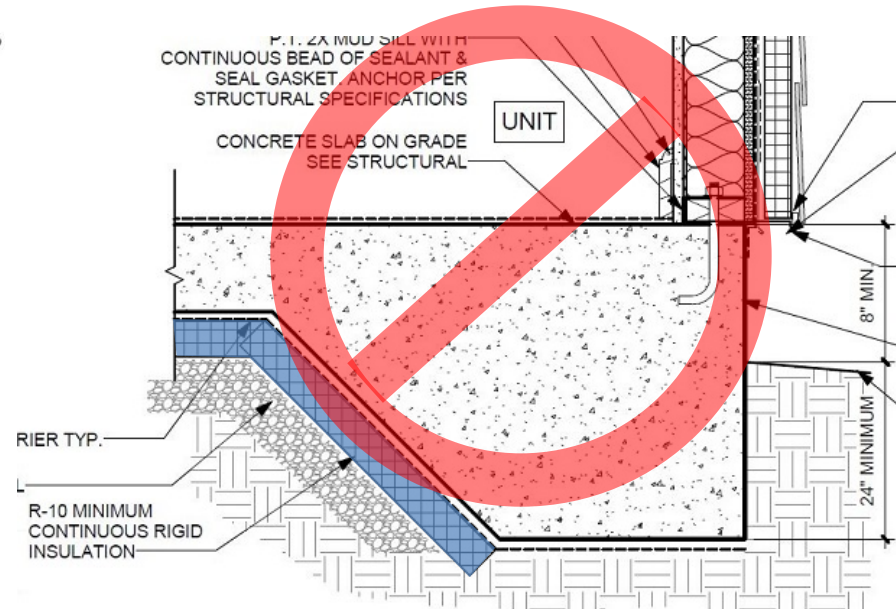
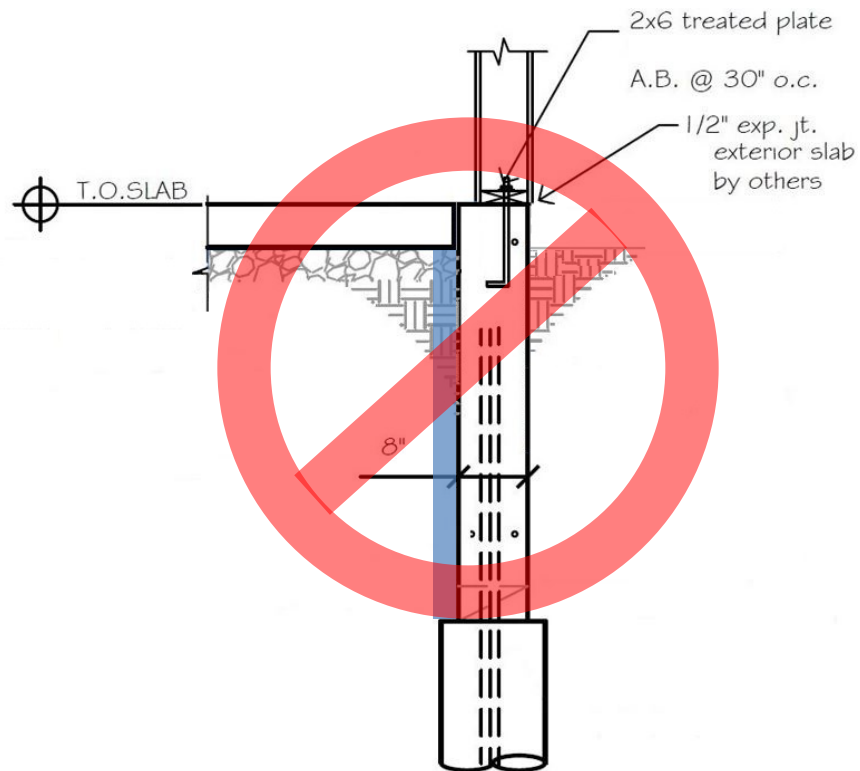
A guide to slab edge insulation install that meets the mandatory 2018 IECC code requirements C402.2.4 and R402.2.10. The blue below represents R-10 insulation.



A guide to slab edge insulation install that meets the mandatory 2018 IECC code requirements C402.2.4 and R402.2.10. The blue below represents R-10 insulation.



A guide to slab edge insulation install that meets the mandatory 2018 IECC code requirements C402.2.4 and R402.2.10. The blue below represents R-10 insulation.



Drawings directly above: Insulation does not meet minimum code requirement.

R402.2.10 Slab-on-grade floors. ...the insulation shall extend downward from the top of the slab on the outside or inside of the foundation wall.