

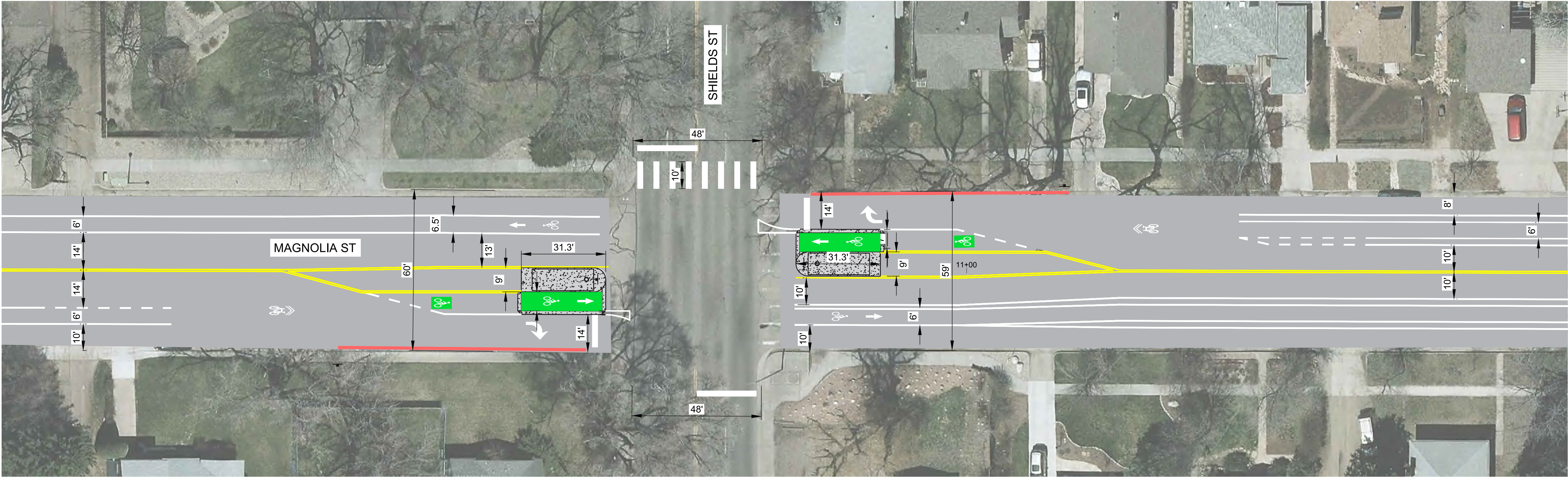
W. Mulberry Street Improvements

Shields at Magnolia

Proposed Design: Toucan Signal

Proposed Design: Toucan Signal

Magnolia Street is the east-west continuation of the Mulberry Bikeway. The restriping and new protected bike lanes along W. Mulberry Street would transition at City Park Ave. - at this point, cyclists would be encouraged to continue up Jackson to Magnolia, or continue south along City Park Ave depending on their destination. The crossing of Shields at Magnolia is currently unsignalized. The proposed “Toucan” design would facilitate a safe bicycle and pedestrian crossing at Shields.



Similar to Pitkin Bikeway Crossings of Lemay, Shields and Taft Hill Rd



Proposed Vehicle Traffic Routing:

