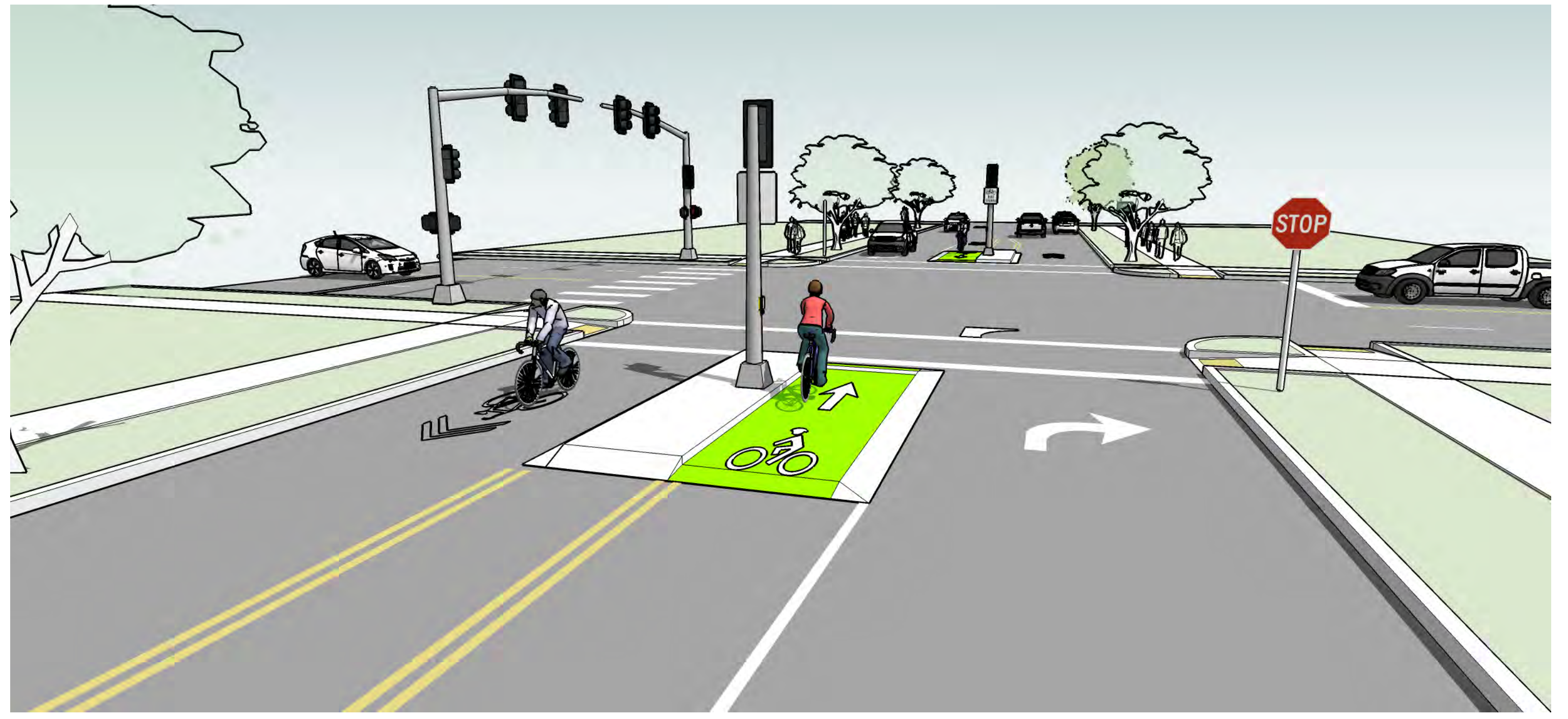
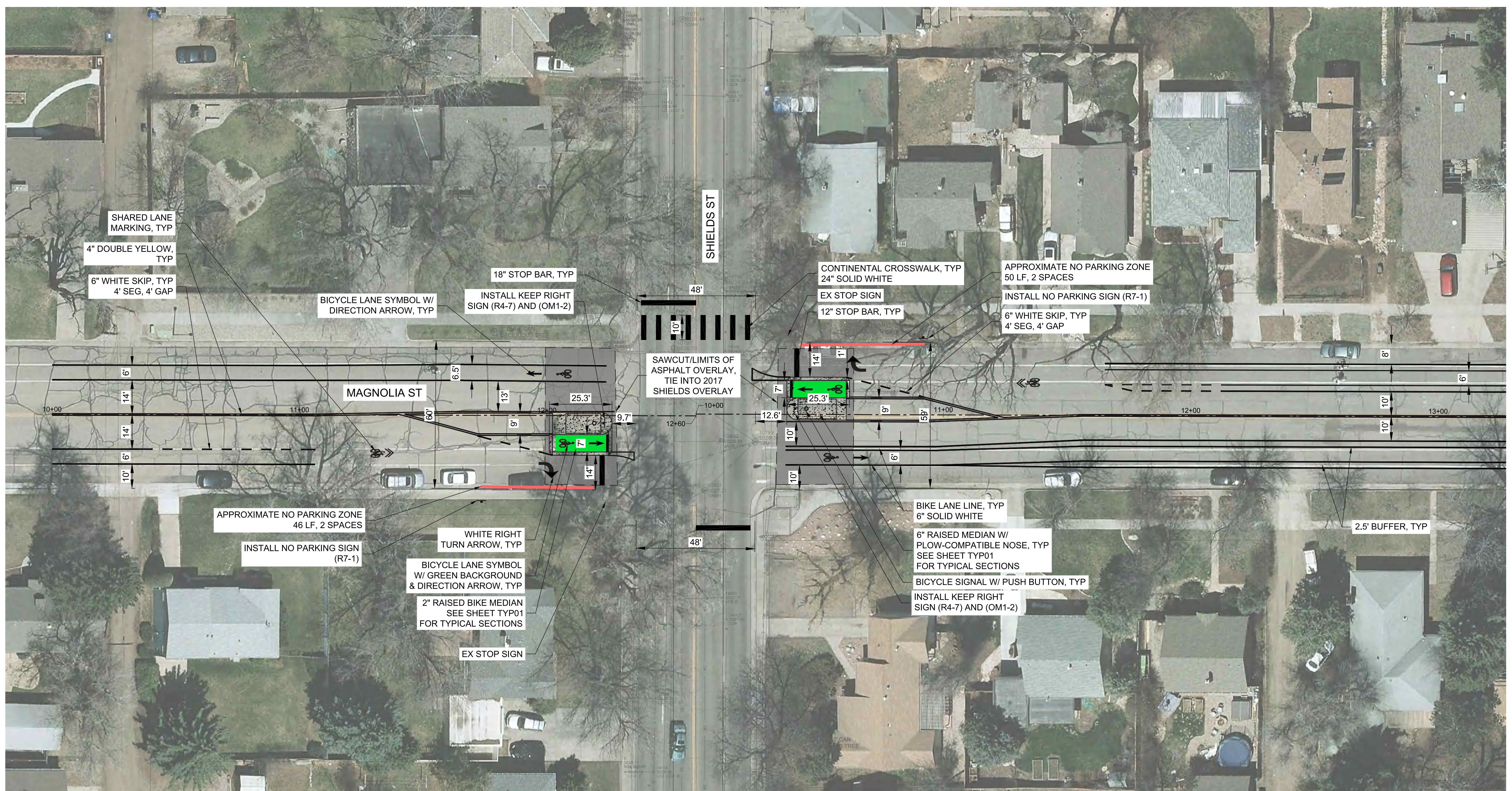


Design 1: Toucan Signal

- New pedestrian signal, push buttons, and crosswalk on north side of intersection
- Bicycle crossing and raised waiting area on Magnolia
- Dedicated bicycle signals and push buttons
- Vehicles exiting Magnolia will be restricted to right turns onto Shields
- Turning movements from Shields onto Magnolia will remain unchanged
- On-street parking impacts on northeast and southwest corners (approximately one parking space on each side)
- Signal facing Shields (Green, Yellow, Red) only activated when bicycle or pedestrian pushes the button
- Signal coordinated with nearby signal at Mulberry



Similar to Pitkin Bikeway Crossings of Lemay, Shields and Taft Hill Rd



DRAFT DESIGN

