



Xeriscape Design Assistance Program: Preparing for Your Design Consultation

fcgov.com/xeriscape-design

Xeriscape Design Assistance Program

Get help creating an attractive, low water-using landscape plan for an area of your yard.

- A private, 1½ hour consultation with a participating landscape design professional
- Receive a plan that is ready to be installed by you or a contracted landscaper
- Must be a Fort Collins Utilities water customer

Fee: \$50, paid directly to the landscape designer

Design Assistance: Steps for Participation

1. Sign up online at fcgov.com/xeriscape-design or call 970-221-6700 for eligibility
2. Receive a preparation packet, including a list of participating landscape designers
3. Contact one or more designers on the list and choose one you'd like to work with
4. Schedule an appointment with a designer at your home or other agreed upon location
5. Prepare for your design consultation

Xeriscape Installation Rebate

Installation rebate: \$.50 per square foot, up to \$500

To receive a rebate:

- Xeriscape Design Assistance consultation is mandatory
- Receive pre-approval from Fort Collins Utilities before purchasing or installing landscape materials
- Landscape area must be 100 to 1,000 sf.
- Final rebate submittal must be within one year of the date of consultation
- See entire list of rules at *fcgov.com/xeriscape-design*

Preparing for your Design Consultation

- Planning & Design Steps:
 1. Collect Supplies
 2. Choose the Location
 3. Create a To-Scale Map
 4. Take Measurements
 5. Create a Site Plan
 6. Take 'Before' Photos
 7. Complete Landscape Profile
 8. Complete Design Consultation

Planning and Design

1. Collect Supplies

- Preparing for Your Xeriscape Design Consultation Packet
- Landscape Profile (page 6 in Preparing For Your Design Consultation Packet)
- Aerial of project area (can use Google Maps)
- Graph paper: 1" = 10'
- Measuring tape (more than one is best)
- Pencil

Planning and Design

2. Choose the Location to Re-Landscape

When choosing an area, consider where:

- Improvements are needed
- Turf can be eliminated
- A fence, property line or sidewalk are defined
- The sprinkler zone is separate from turf

Planning and Design

.....

This design is NOT recommended because it:

- Divides the usable turf area
- Makes mowing and edging difficult
- Creates an impossible sprinkler system zone
- Results in no water savings



Planning and Design

3. Create a To-Scale Map

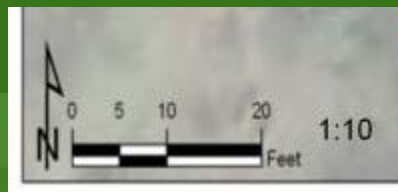
1:8 means 1 in = 8 ft.

1:10 means 1 in = 10 ft.

1:16 means 1 in = 16 ft.

1:20 means 1 in = 20 ft.

Graph paper provided is 1:10 ratio



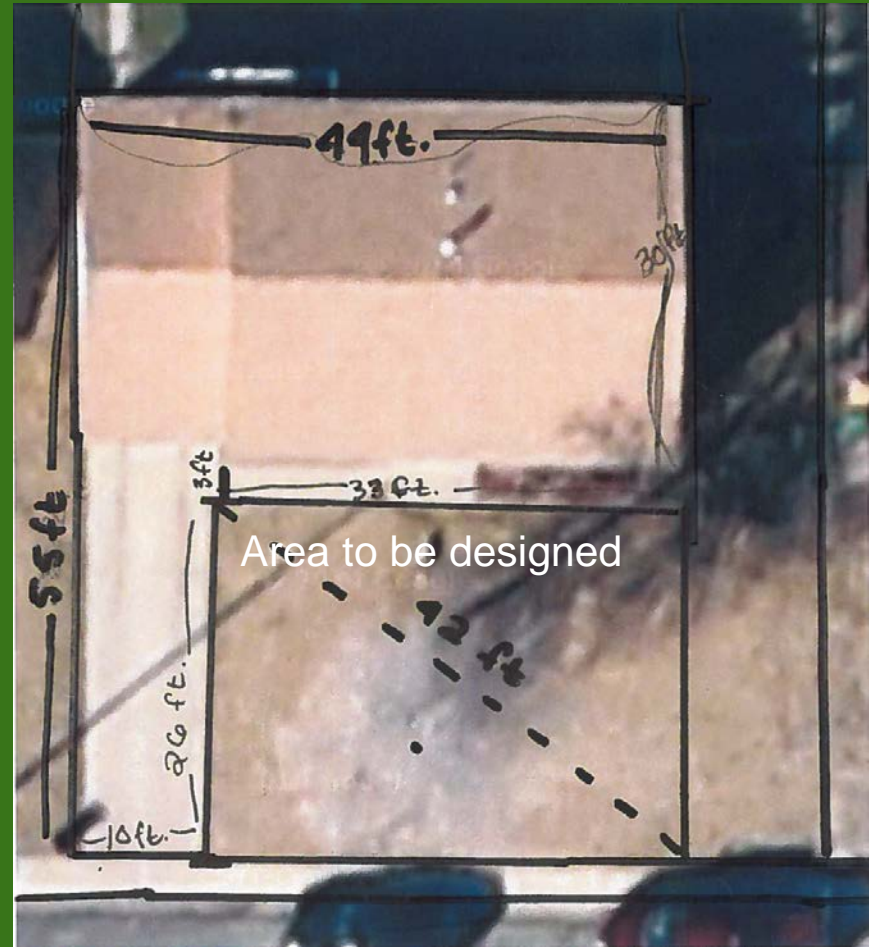
Example of
Aerial Photo
taken from
Google Maps



Planning and Design

4. Take Measurements

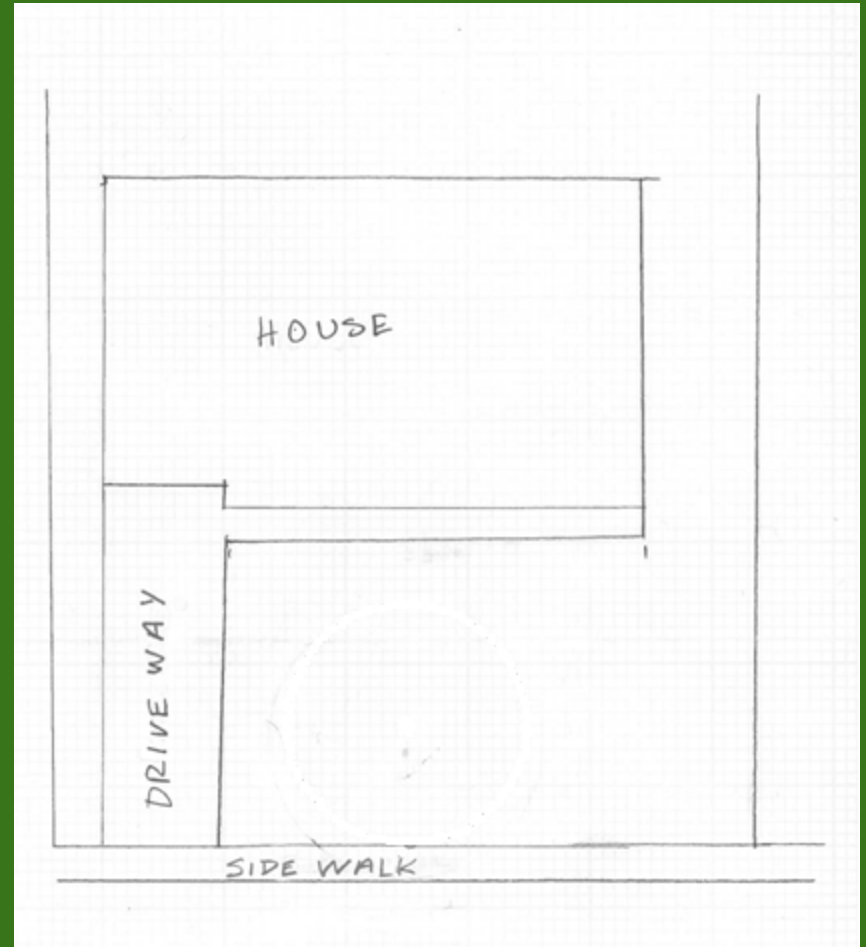
- Outline the house or property line close to the area to be designed
- Measure the length and width of the area
- Measure the distance from each corner of the area
- Measure the driveway, sidewalk and deck/patio



Planning and Design

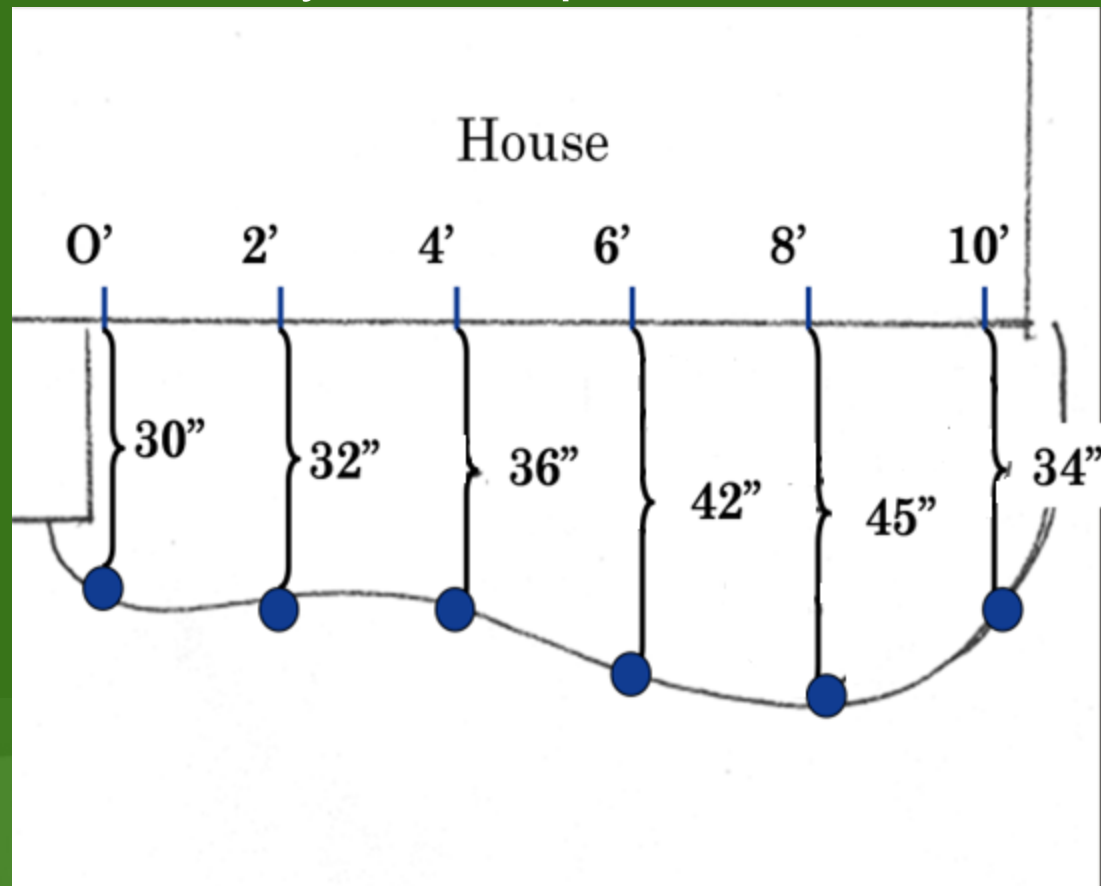
5. Create a Site Plan

- Using measurements from the aerial view, draw the property's dimensions on the graph paper
- Start at the center of the paper
- If design area is 50 feet by 100 feet, draw an outline that is 50 squares by 100 squares



How to Plot an Irregularly Shaped Bed or Curve:

1. Along a straight edge (house, sidewalk, etc.), measure and mark every two feet
2. Measure perpendicularly from the straight edge to the curve
3. Plot the points of the curve on your site plan
4. Connect the points as best as you can



Planning and Design

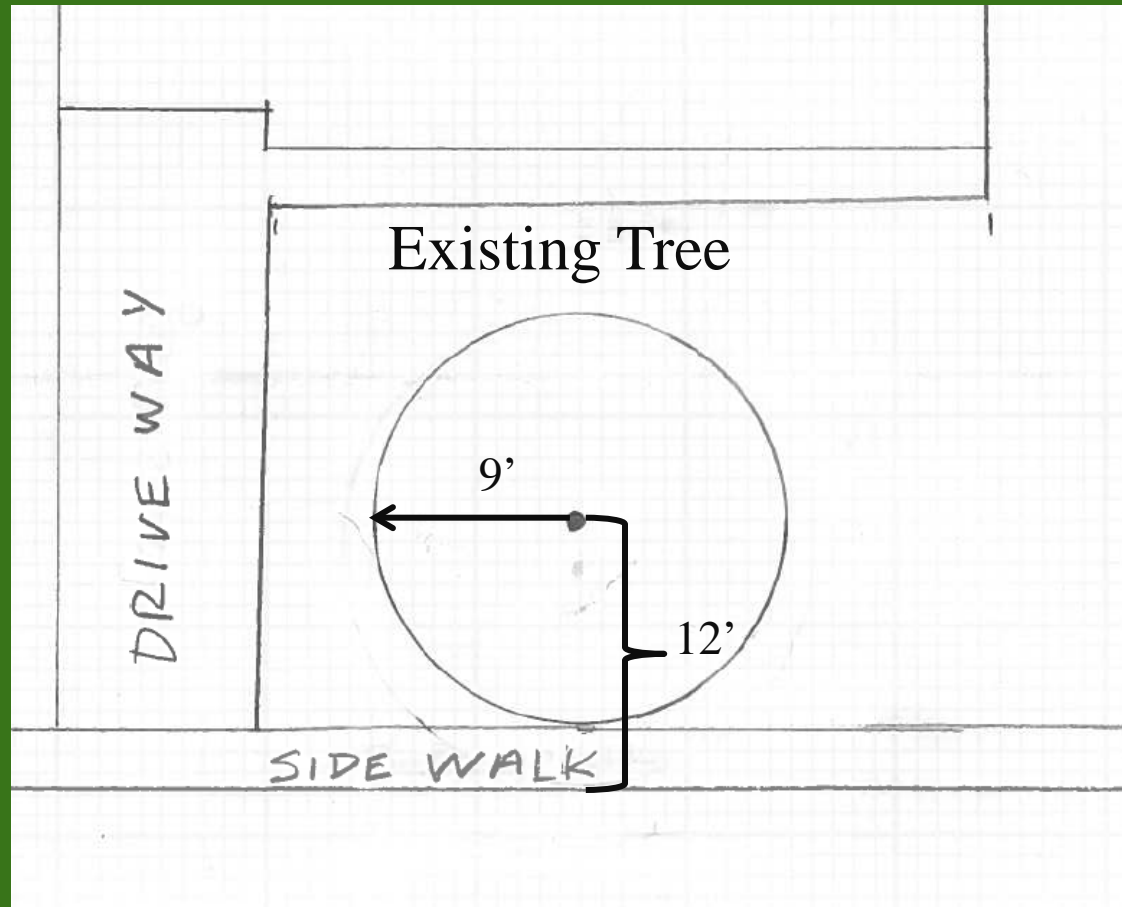
Add Existing Trees to the Site Plan:

1. Find the tree diameter by measuring along the ground from the trunk to the approximate tips of the largest branches (edge of canopy). Multiply by 2 to determine the diameter.



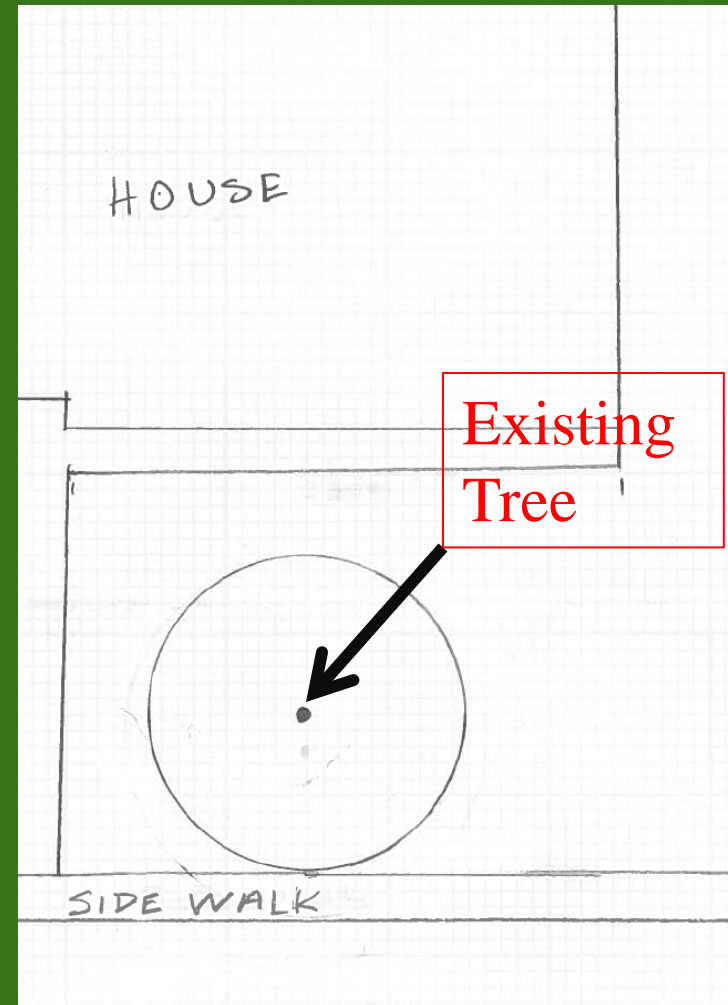
Add Existing Trees to the Site Plan:

2. Determine the location of the tree. Measure from the trunk to a fixed object in two different directions (use property line, sidewalk, driveway etc.) and record these numbers.

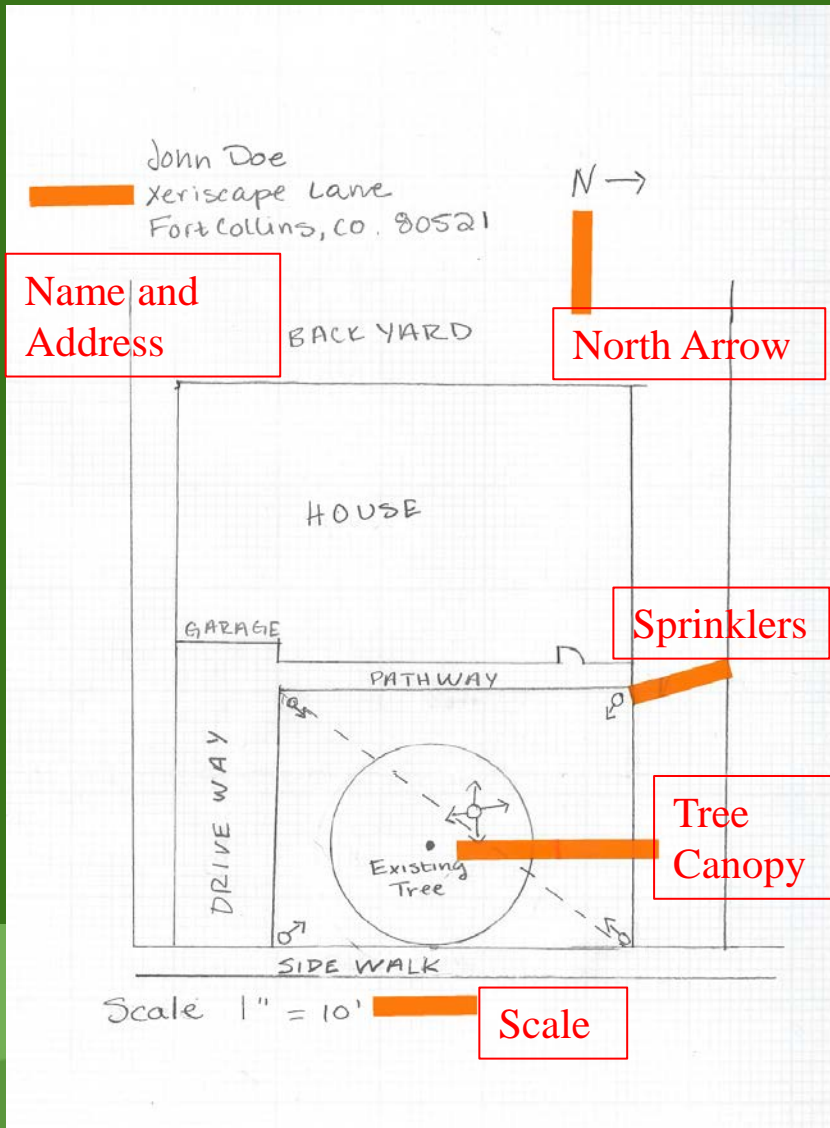


Add Existing Trees to the Site Plan:

3. Add the tree location and diameter onto your site plan. If the diameter is 10 feet, then count ten squares from point of location.
4. Draw on site map with a circle template using a household item like a lid.



Planning and Design



Add to the Site Plan:

- Name and address
- North arrow
- Existing lawn, shrubs, flower beds and gardens
- Trees (yours and neighbors)
- Fences, walls and other structures
- Sprinkler system zones
- Scale

Planning and Design

6. Take “Before” Photos

- Take close up photos of the area to be re-landscaped
- Take photos from the street or sidewalk to show the overall garden space
- Image sizes of 250KB or larger are helpful



Planning and Design

7. Complete Landscape Profile

- Include site and use analysis
- Get ideas for landscape styles and plant material you like from the Xeriscape Design Booklet (included in packet) or at fcgov.com/xeriscape

Landscape Profile

Site Analysis

Soil Type: Clay Sand Loam

Exposure: North South East West

Slope: None Slight Steep

Current Watering Method: Sprayheads Rotors Drip Hand None

Are there any features you'd like to camouflage or enhance?

- Street light Fire hydrant View of neighbors Mountain view
 More shade Shield from wind Other _____

Use Analysis

Why do you want to Xeriscape?

- Save water Save money Save maintenance time Need landscaping
 Like appearance Other _____

What is your knowledge of gardening? Expert Moderate Limited

List any themes (butterfly garden, scented garden etc.) or desired activities.

What do you want to use the area for?

- Outdoor entertaining Kids play Dogs Relax No real use
 Other _____

Do you want the look to be: Manicured Lush Colorful Natural

Other _____

What hardscape would you like?

- Patio Fire pit BBQ area Walkway Bench

Other _____

List any plants you'd like included in the design

Planning and Design

8. Complete Design Consultation

- Contact one or more designers from the Participating Designer List in the Xeriscape Design Consultation packet
- Schedule a consultation
 - Give yourself plenty of time to prepare before your appointment

Be Prepared for Your Consultation

- Have your measurements taken and site map completed
- Fill out the Landscape Profile form in your packet
- Take out the 2015 Xeriscape Design Assistance Rebate application and complete it with the designer

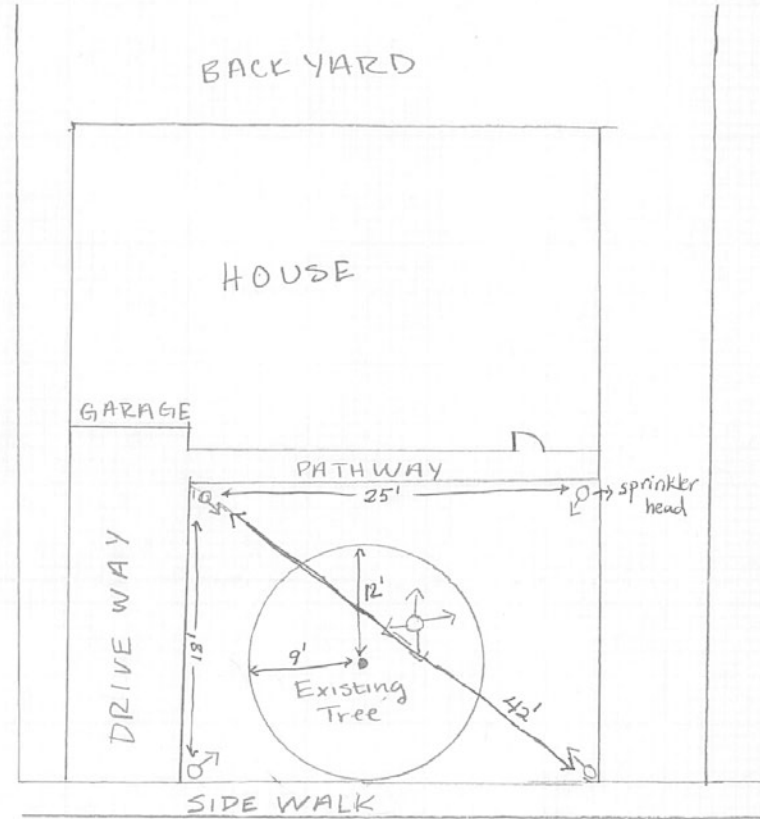
Reminder:

Make the most of your consultation by being well prepared. The designer may re-schedule if you don't have your site plan and measurements ready.

Make sure your site map is completed

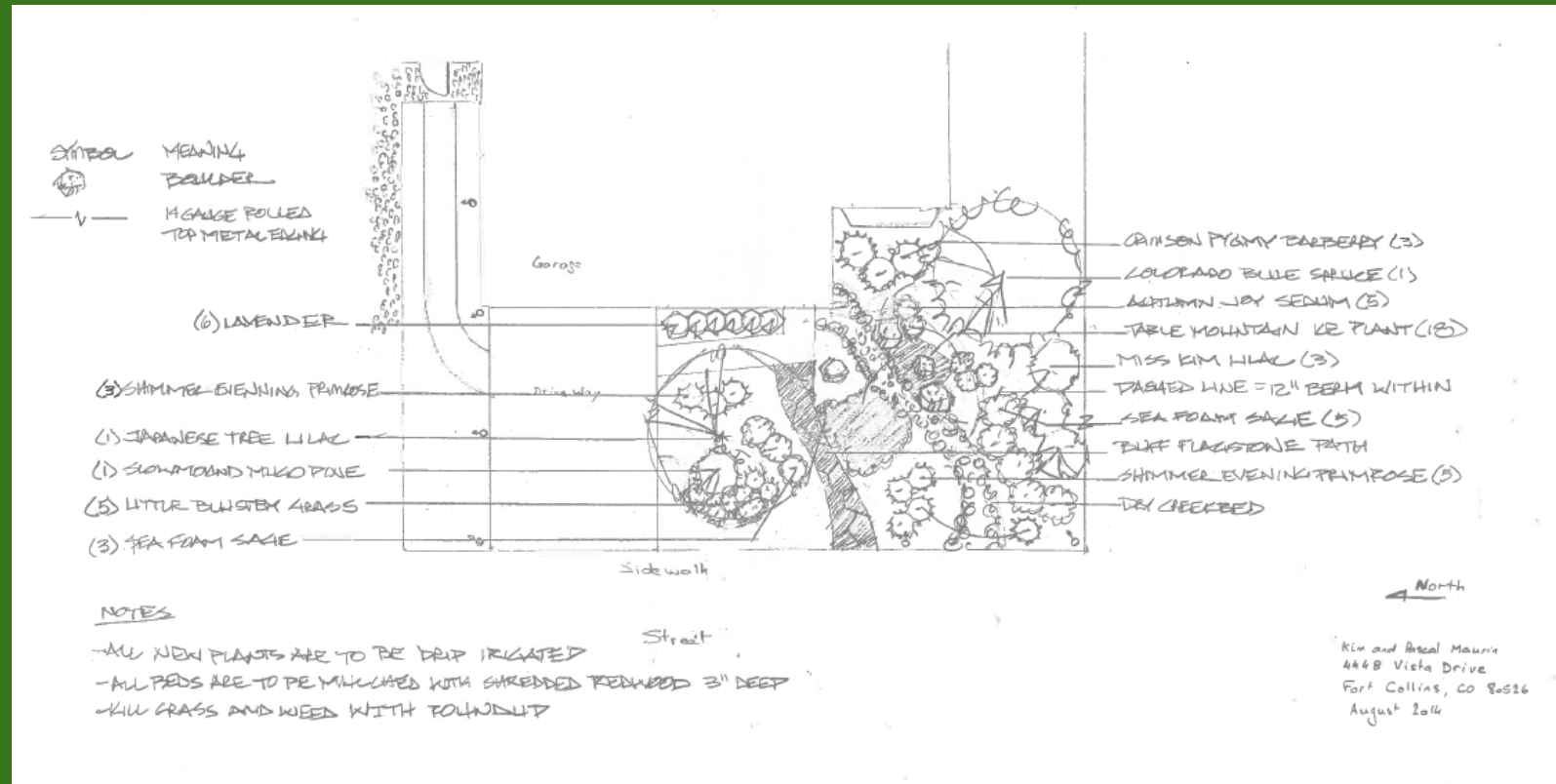
John Doe
Xeriscape Lane
Fort Collins, CO. 80521

N →



Scale 1" = 10'

Example of Landscape Plan Created at Consultation



Before and After Photos

.....



Before



After

Before and After Photos



Before



After

Before and After Photos

.....



Before



After

For More Information

Fort Collins Utilities
fcgov.com/xeriscape
rebates@fcgov.com
970-221-6700

Cindy Burge, Horticulturist
cburge@fcgov.com
970-416-2877

Laurie D'Audney, Water Conservation Manager
ldaudney@fcgov.com
970-221-6877