

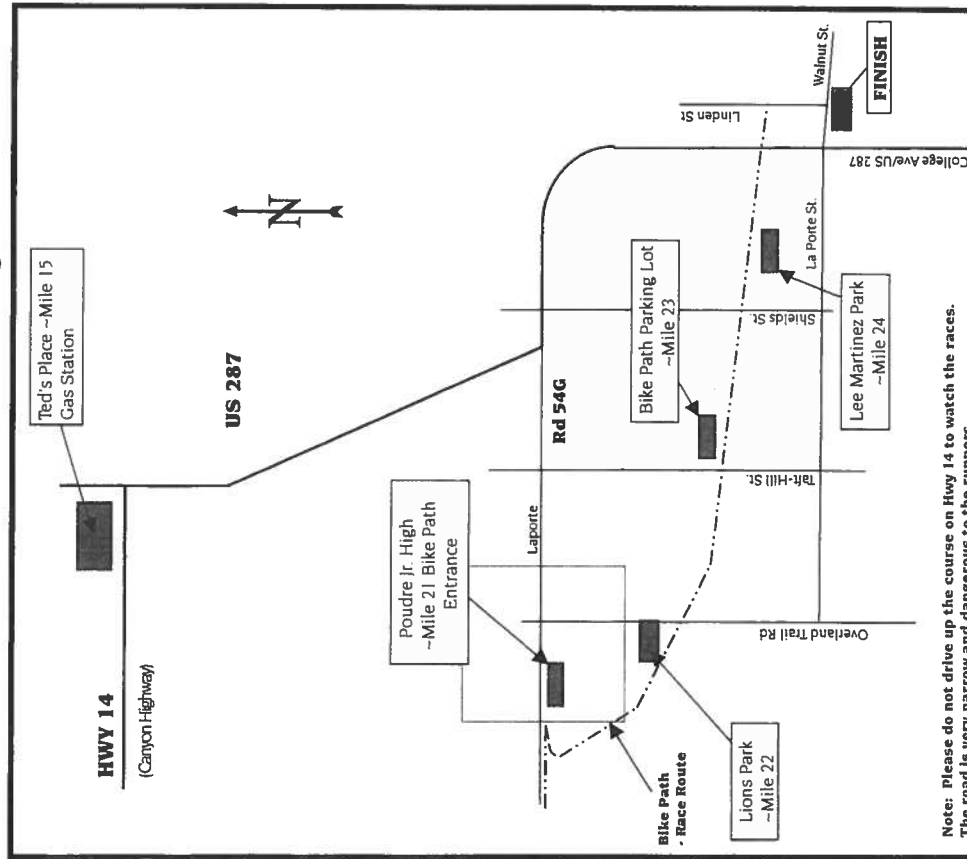
Full and Half Marathon Course Map

Marathon Start
at Steven's Gulch
Day Use Area

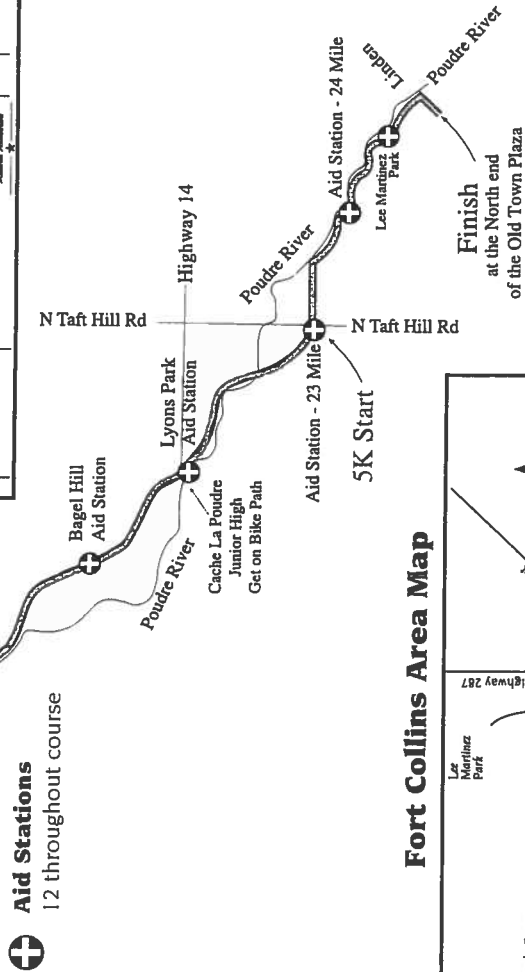
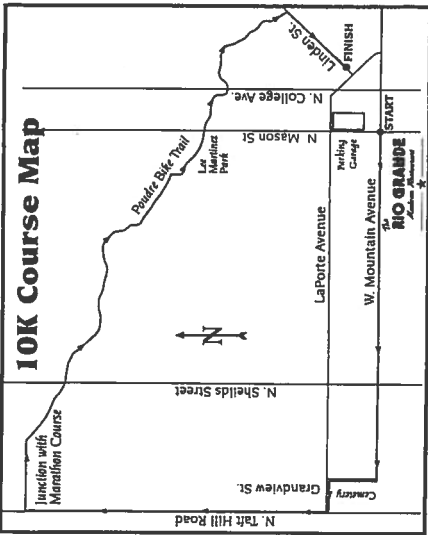
Course runs on North side
of Poudre River Canyon

State Highway 14
Slope Prairie Road / CR 27

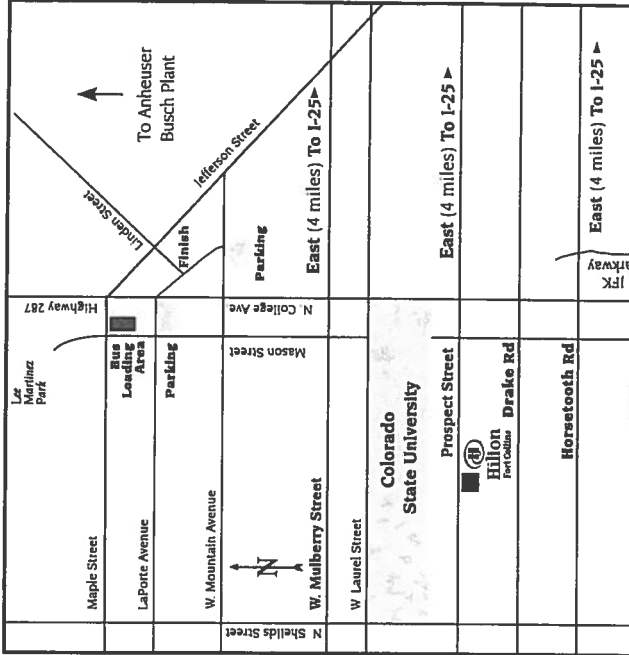
Suggested Marathon Viewing Points



Note: Please do not drive up the course on Hwy 14 to watch the races. The road is very narrow and dangerous to the runners.



Fort Collins Area Map



New Roost Location

