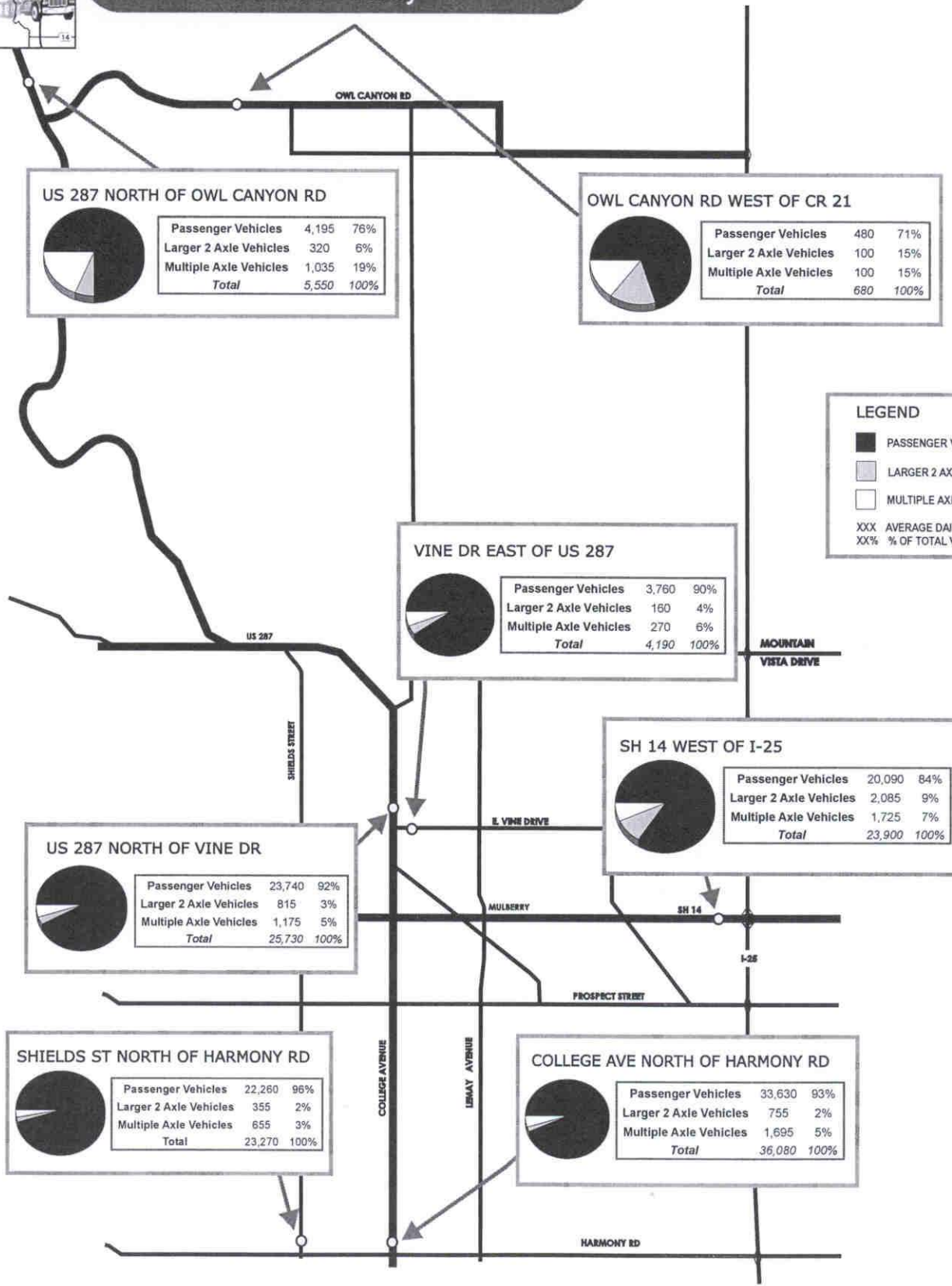


# APPENDIX A



# Northern Colorado Truck Mobility/ SH 14 Relocation Study



**LEGEND**

- PASSENGER VEHICLES
- LARGER 2 AXLE VEHICLES
- MULTIPLE AXLE VEHICLES

XXX AVERAGE DAILY TRAFFIC  
XX% % OF TOTAL VOLUME

↑ N

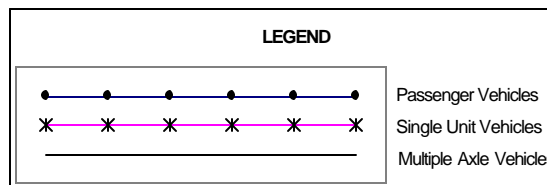
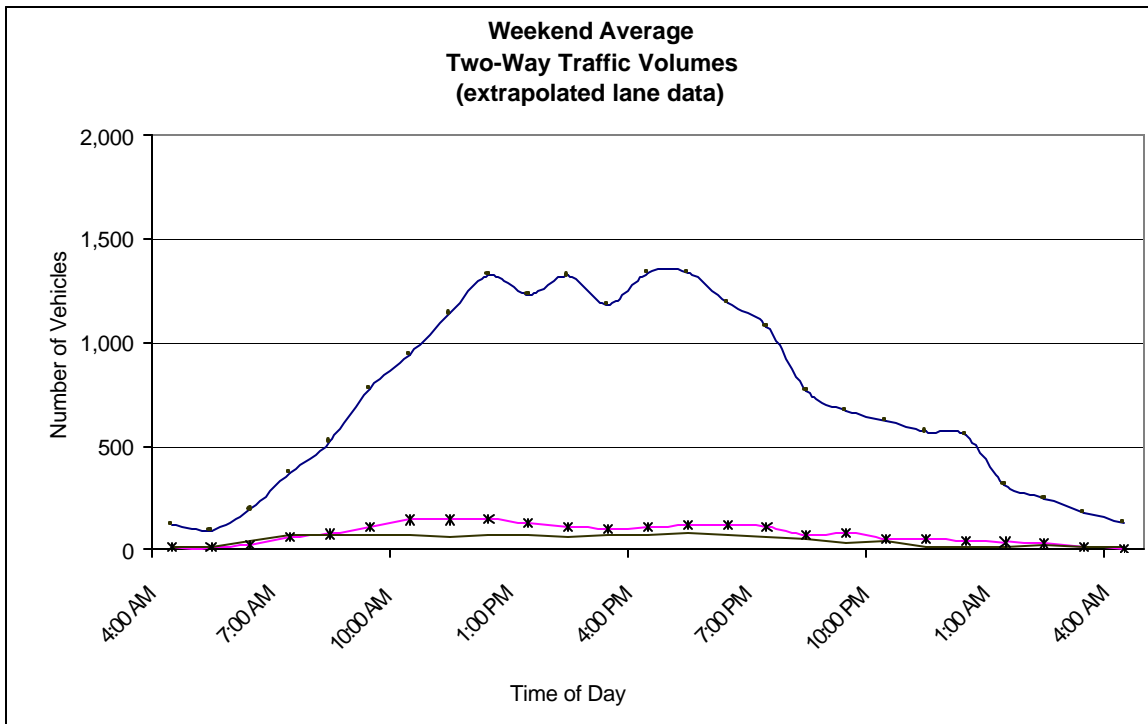
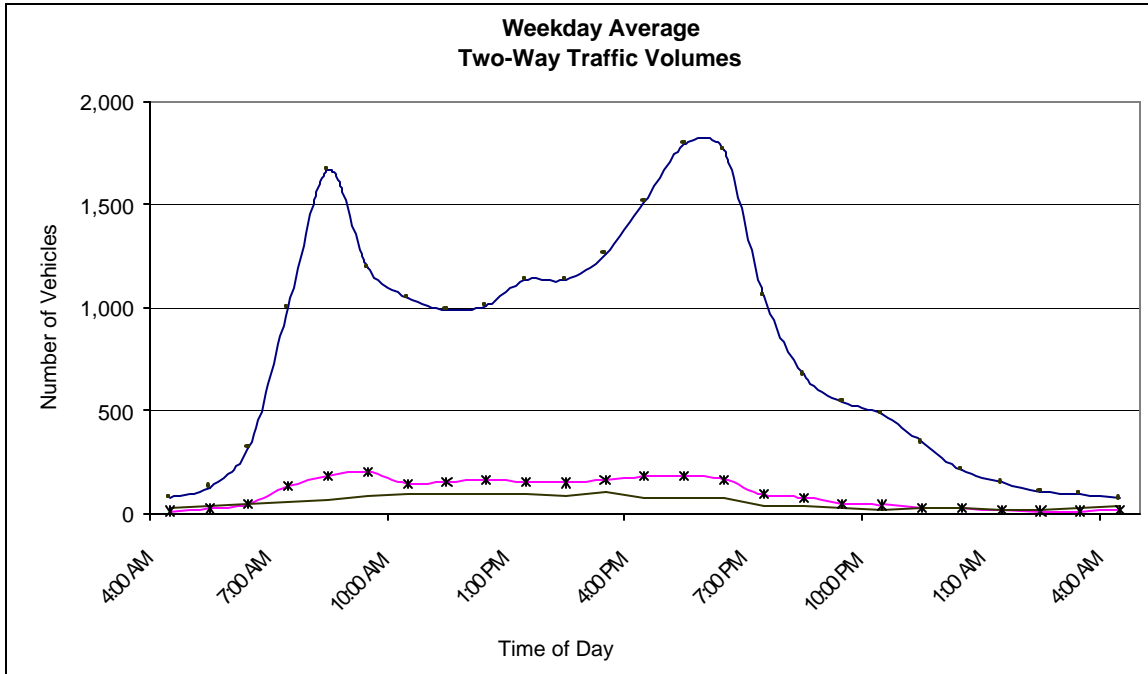
## VEHICLE CLASSIFICATION INFORMATION TWO-WAY





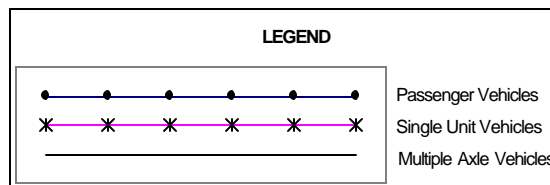
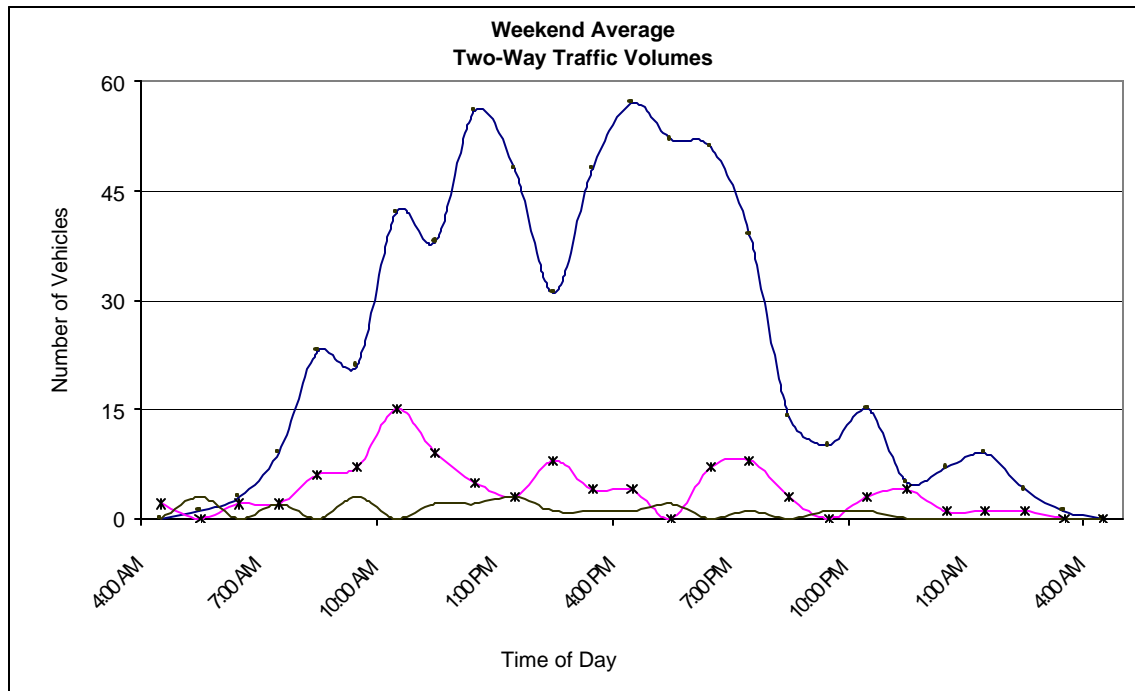
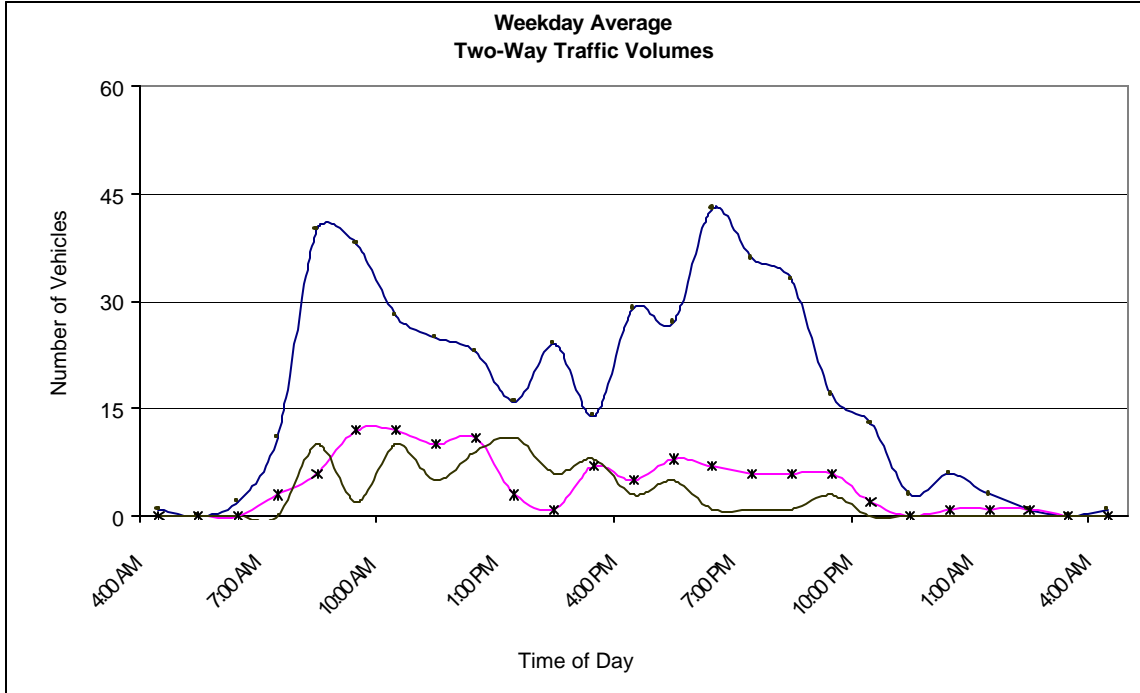
Northern Colorado Truck Mobility/  
SH 14 Relocation Study

**Two Way Traffic Information  
SH 14 West of I-25**



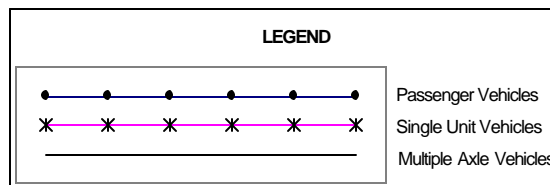
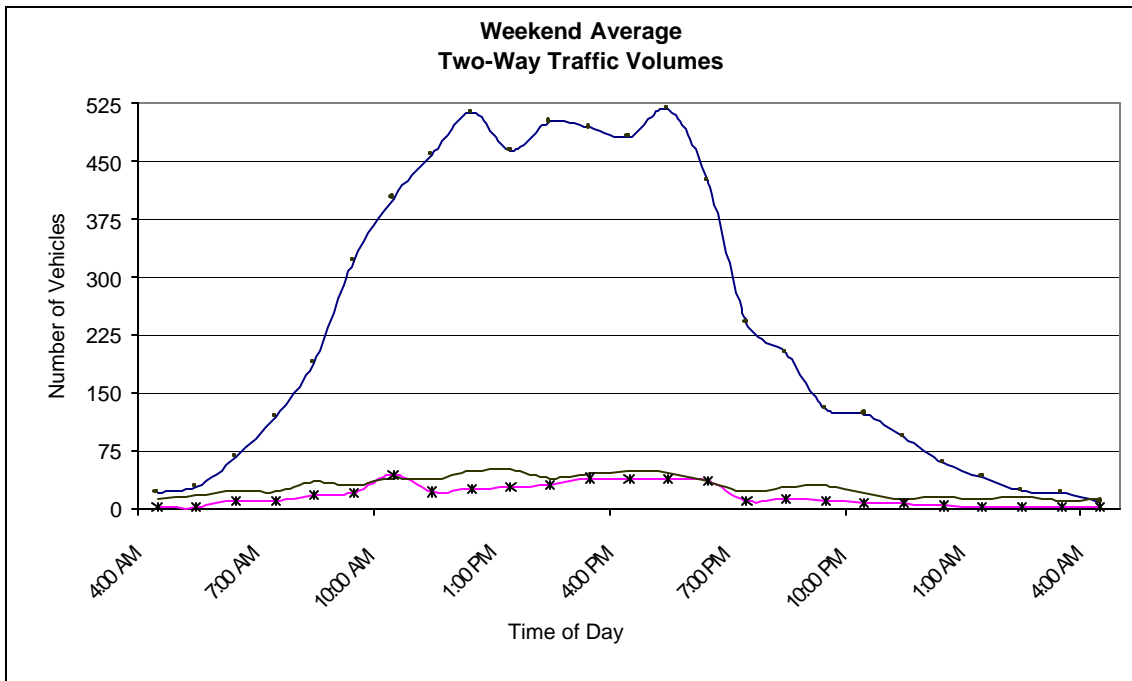
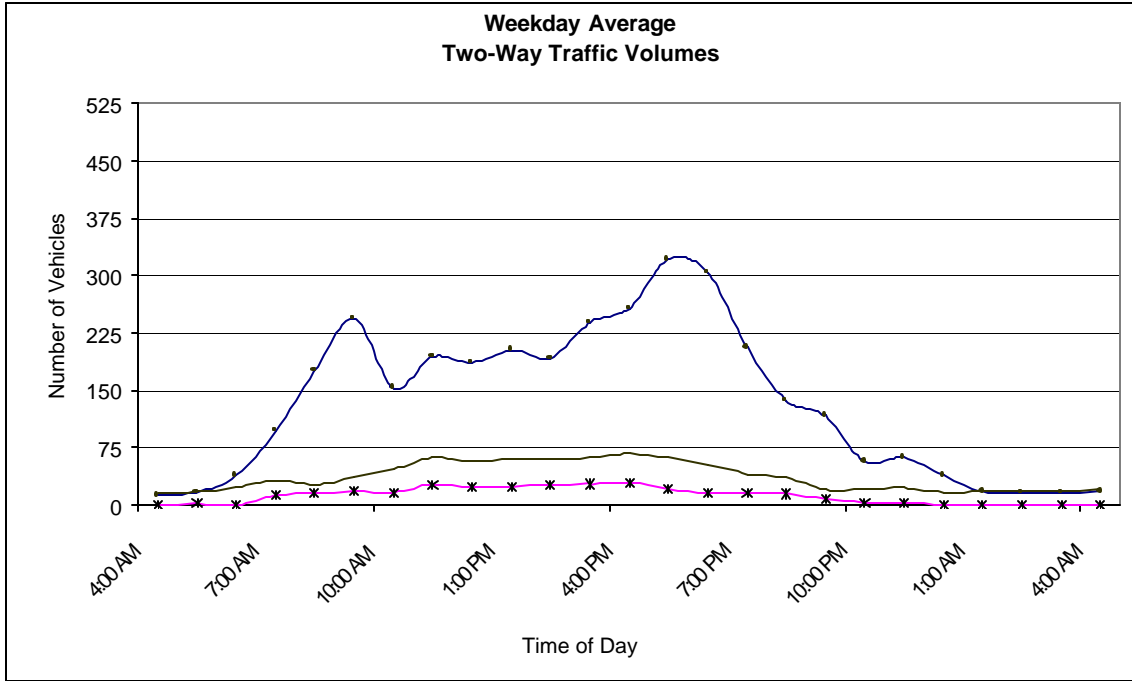


### Two Way Traffic Information Owl Canyon Rd West of CR 21





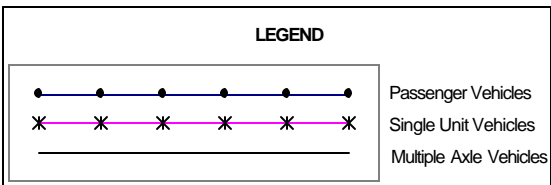
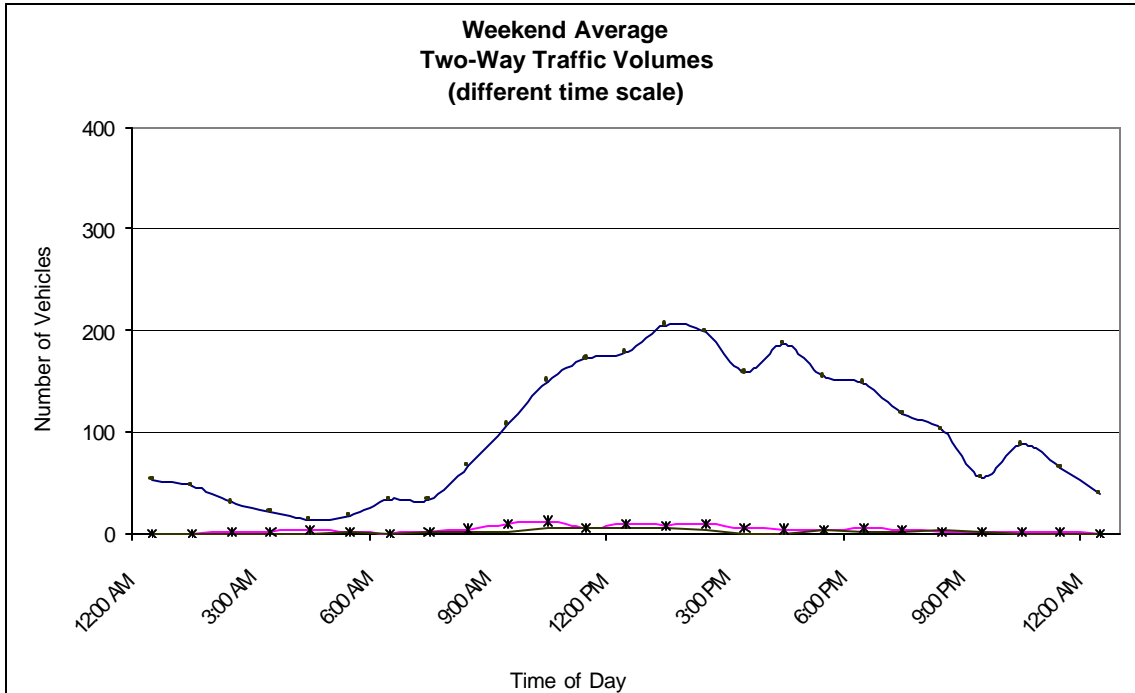
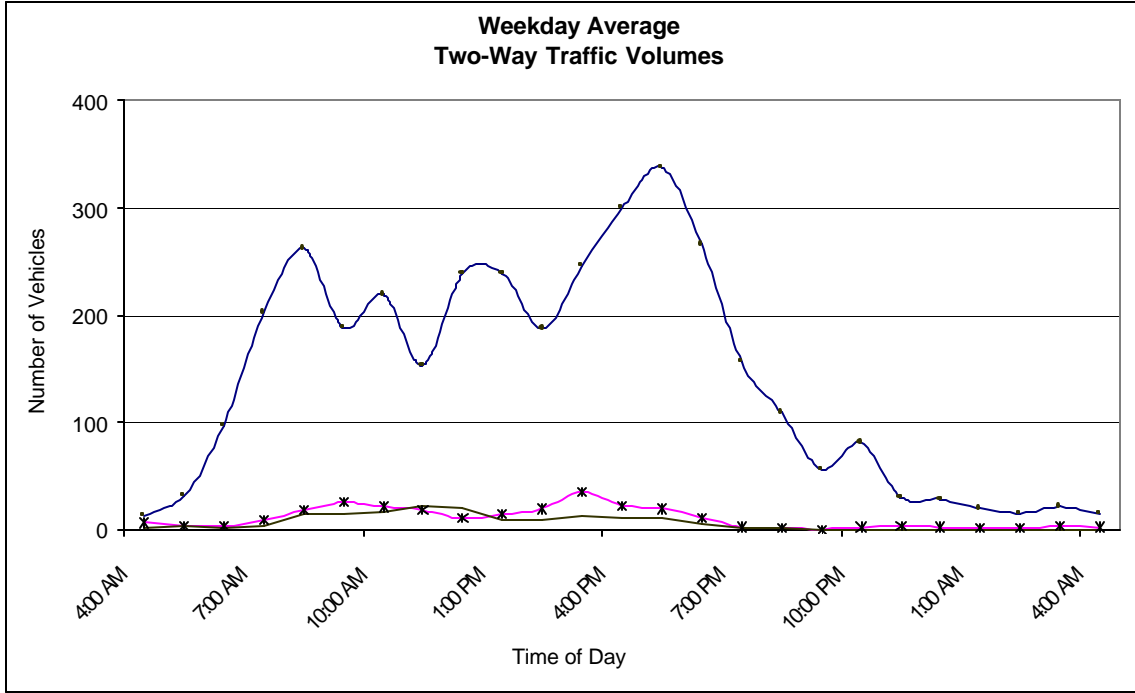
### Two Way Traffic Information US 287 North of Owl Canyon Rd





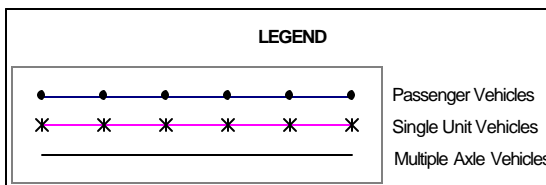
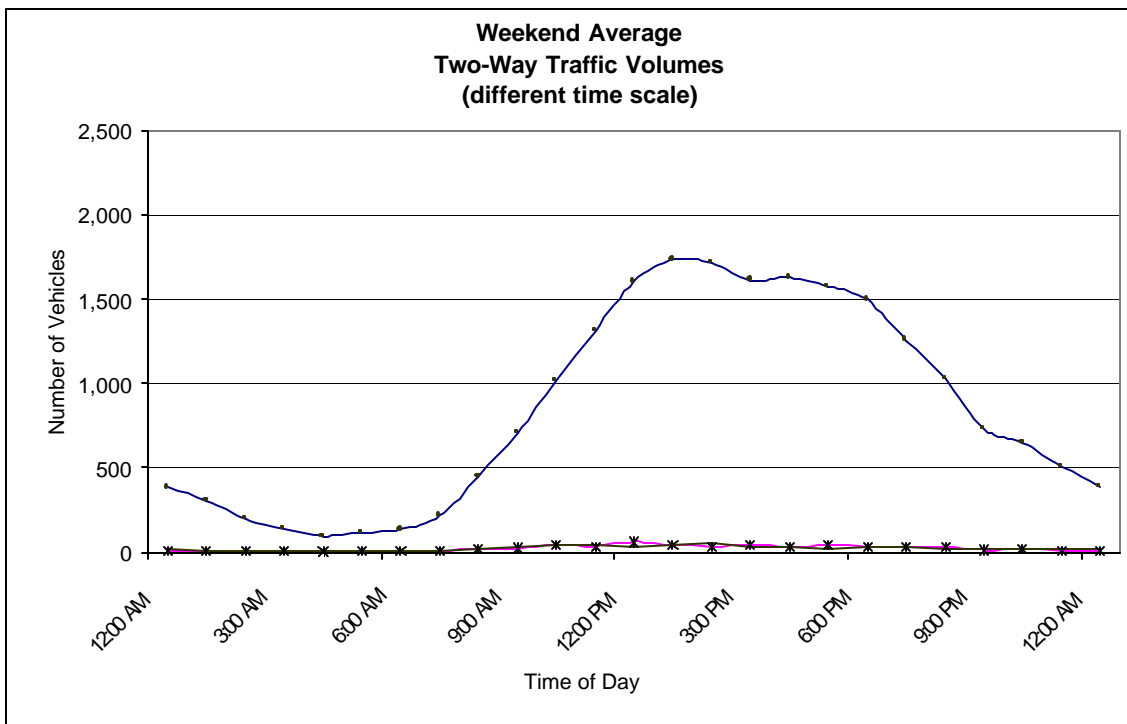
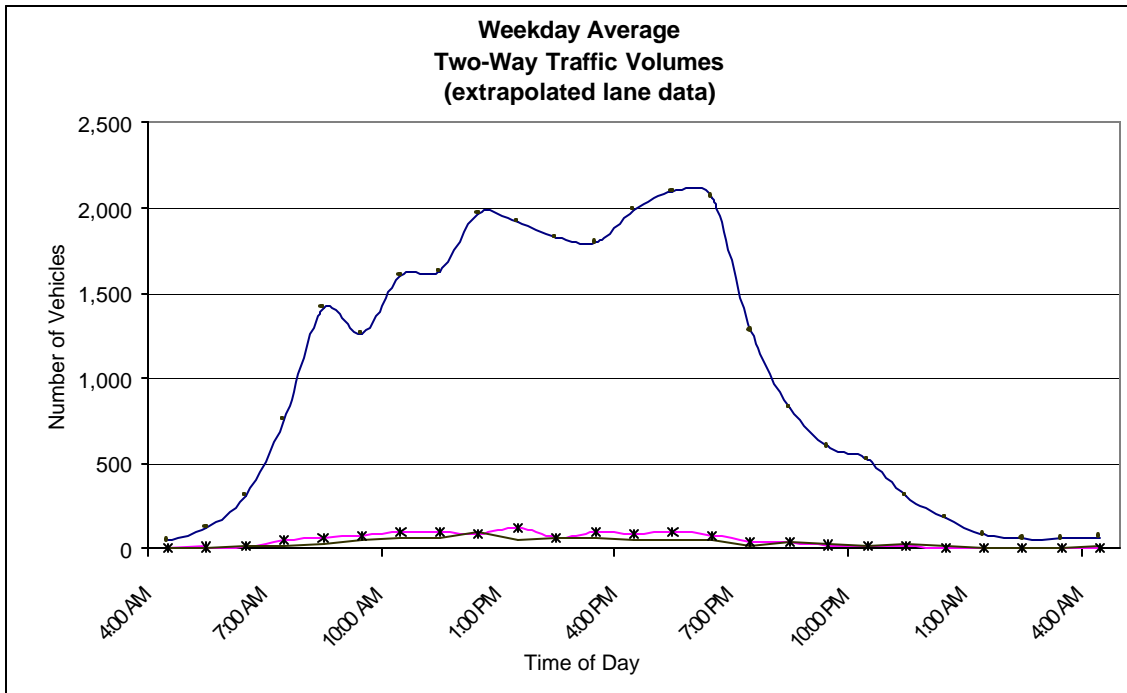
Northern Colorado Truck Mobility/  
SH 14 Relocation Study

**Two Way Traffic Information  
Vine Dr East of US 287**



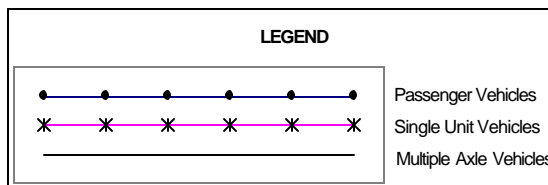
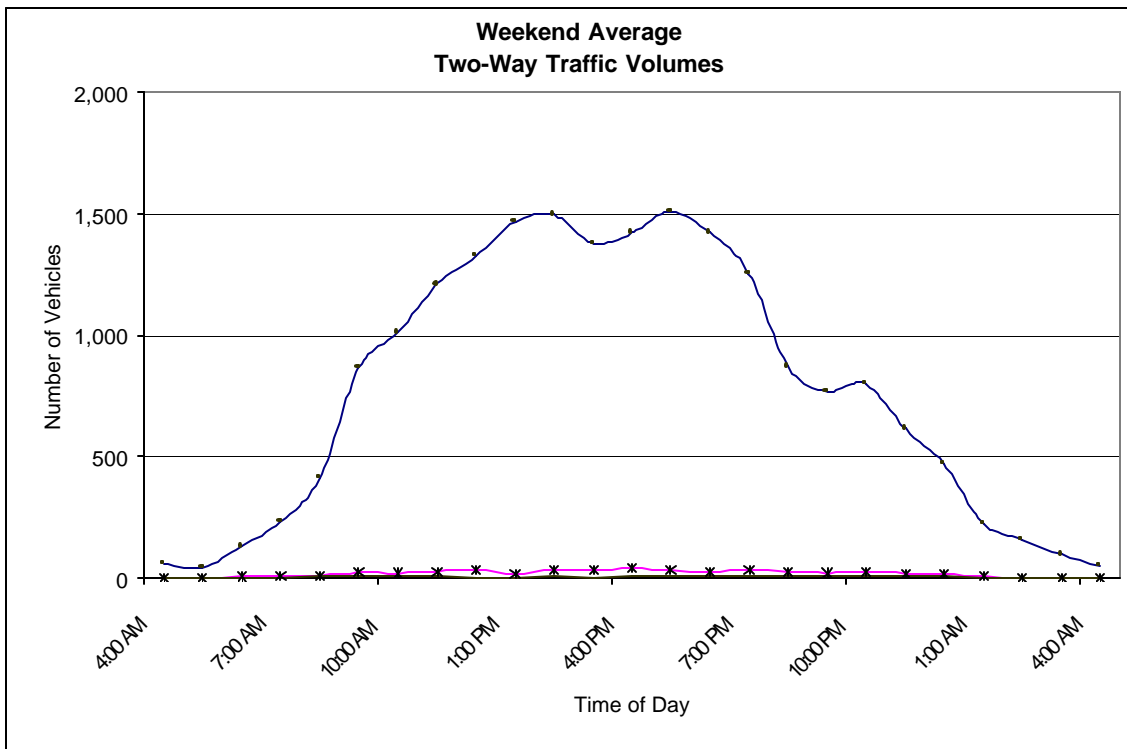
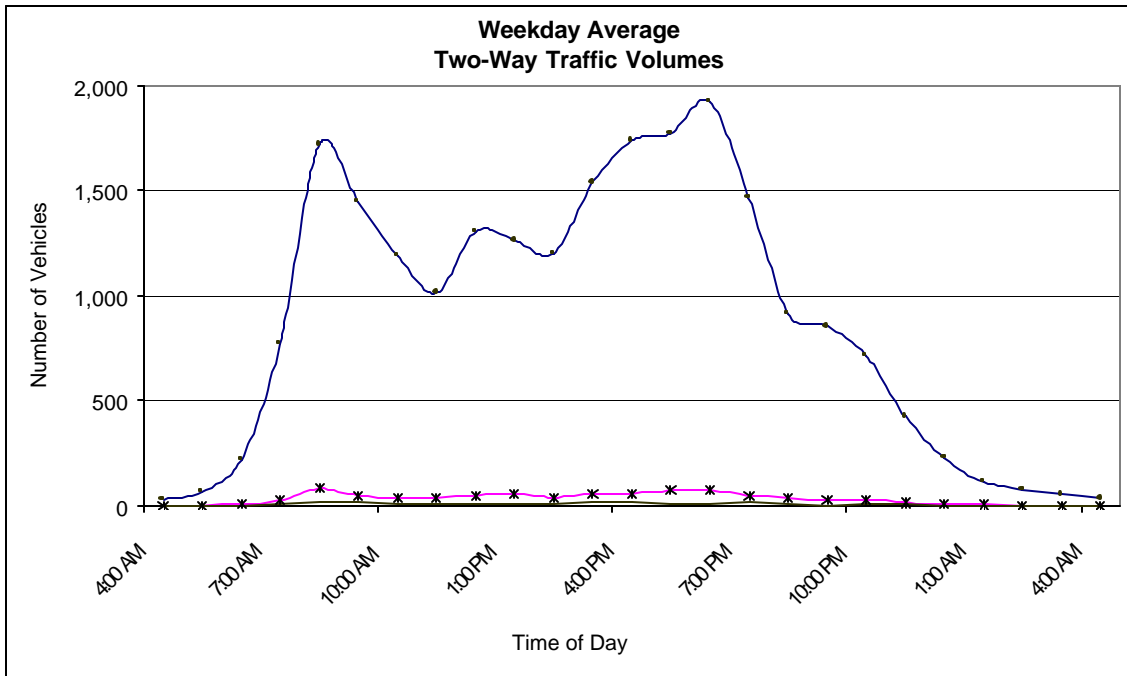


### Two Way Traffic Information US 287 North of Vine Dr



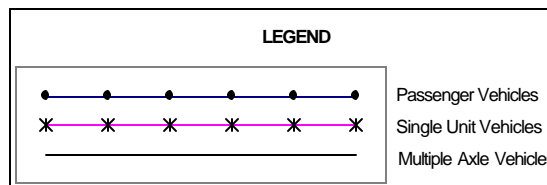
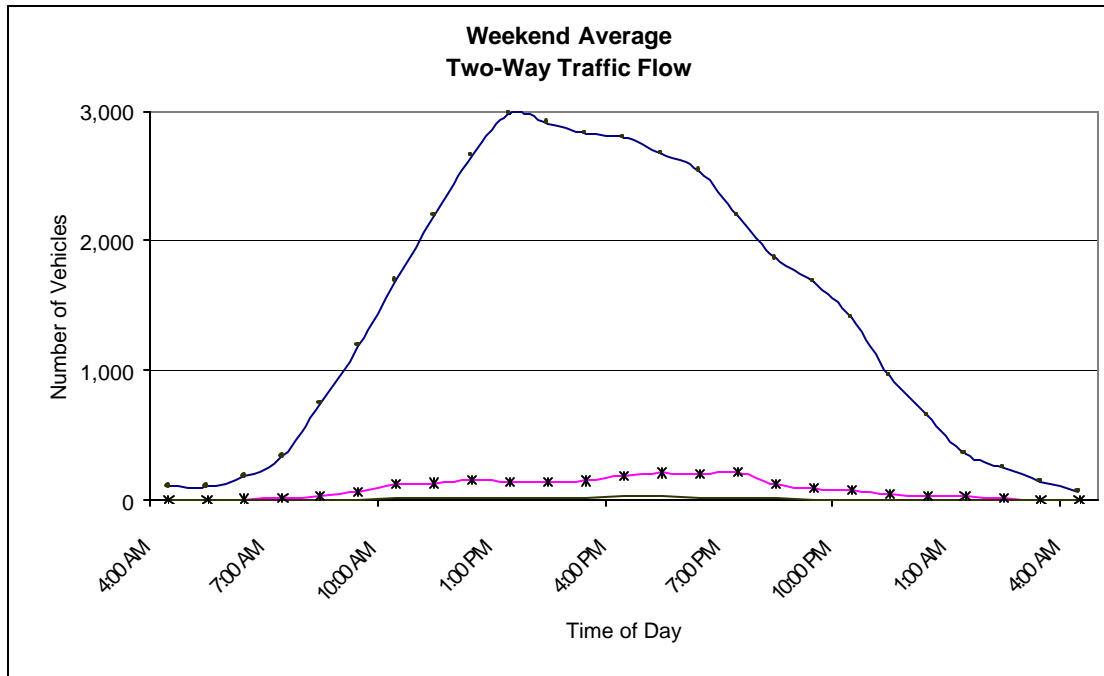
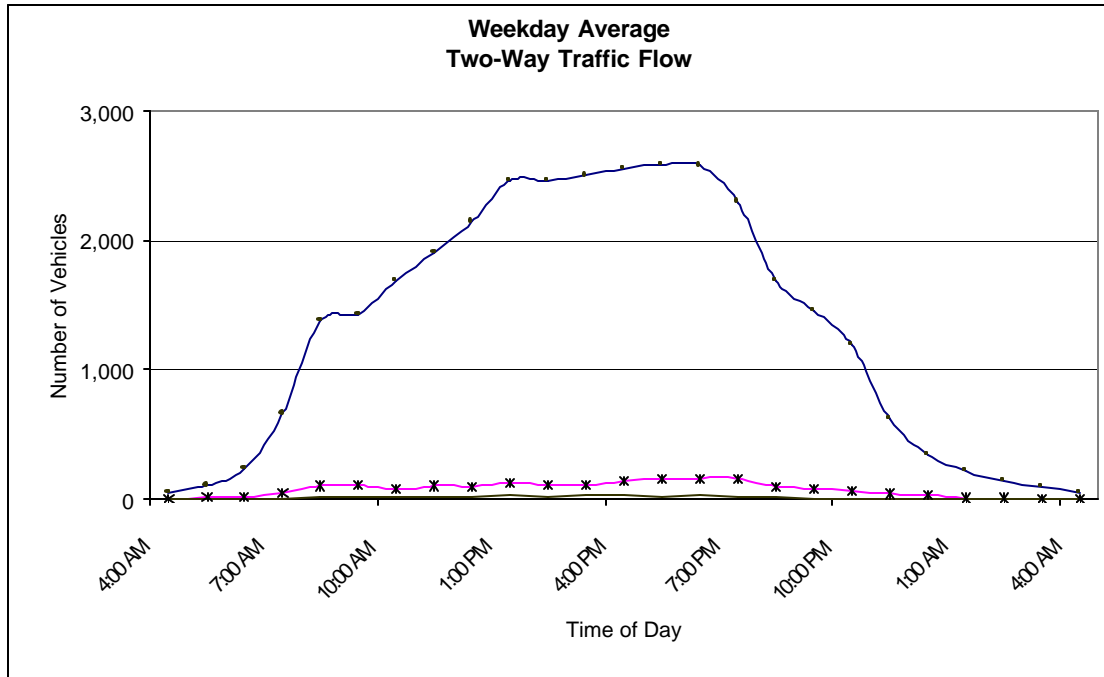


### Two Way Traffic Information Shields St North of Harmony Rd





### Two Way Traffic Information College Ave North of Harmony Rd



**SH-14 w/o I-25 Left Lane****Lanes 1-2 Eastbound**

Totals	Date	Cycle	Cars	2a-4T Buses	2A-SU	3A-SU	4A-SU	4A-ST	5A-ST	6A-ST	5A-MT	6A-MT	7A-MT	Other	Total
24 Hour Totals	11/30/2000	5	2,610	19	239	18	0	39	36	2	1	0	0	34	3,982
Percentages	11/30/2000	0.1%	65.5%	24.6%	0.5%	0.0%	0.0%	1.0%	0.9%	0.1%	0.0%	0.0%	0.0%	0.9%	100.0%
24 Hour Totals	12/01/2000	2	2,513	980	17	276	31	34	40	3	1	1	0	35	3,933
Percentages	12/01/2000	0.1%	63.9%	24.9%	0.4%	7.0%	0.8%	0.9%	1.0%	0.1%	0.0%	0.0%	0.0%	0.9%	100.0%
24 Hour Totals	12/02/2000	5	2,760	964	10	293	42	30	42	2	0	0	0	35	4,183
Percentages	12/02/2000	0.1%	66.0%	23.0%	0.2%	7.0%	1.0%	0.7%	1.0%	0.0%	0.0%	0.0%	0.0%	0.8%	100.0%
24 Hour Totals	12/03/2000	7	2,286	789	7	175	2	16	14	1	0	0	0	24	3,321
Percentages	12/03/2000	0.2%	68.8%	23.8%	0.2%	5.3%	0.1%	0.5%	0.4%	0.0%	0.0%	0.0%	0.0%	0.7%	100.0%
24 Hour Totals	12/04/2000	7	1,901	615	7	150	17	0	19	4	0	0	1	13	2,734
Percentages	12/04/2000	0.3%	69.5%	22.5%	0.3%	5.5%	0.6%	0.7%	0.1%	0.0%	0.0%	0.0%	0.0%	0.5%	100.0%

**SH-14 w/o I-25 Right Lane****Lanes 1-2 Eastbound**

Totals	Date	Cycle	Cars	2a-4T Buses	2A-SU	3A-SU	4A-SU	4A-ST	5A-ST	6A-ST	5A-MT	6A-MT	7A-MT	Other	Total
24 Hour Totals	11/30/2000	14	4,465	1,995	86	478	39	127	493	17	17	15	0	113	7,859
Percentages	11/30/2000	0.2%	56.8%	25.4%	1.1%	6.1%	0.5%	1.6%	6.3%	0.2%	0.2%	0.2%	0.0%	1.4%	100.0%
24 Hour Totals	12/01/2000	15	4,411	2,148	79	513	52	125	457	12	19	18	5	91	7,945
Percentages	12/01/2000	0.2%	55.5%	27.0%	1.0%	6.5%	0.7%	1.6%	5.8%	0.2%	0.2%	0.2%	0.1%	1.1%	100.0%
24 Hour Totals	12/02/2000	12	5,101	1,923	65	482	60	94	330	13	13	9	0	109	8,212
Percentages	12/02/2000	0.1%	62.1%	23.4%	0.8%	5.9%	0.7%	1.1%	4.0%	0.2%	0.2%	0.1%	0.0%	1.3%	100.0%
24 Hour Totals	12/03/2000	6	4,637	1,624	31	315	8	72	242	5	12	12	3	85	7,053
Percentages	12/03/2000	0.1%	65.7%	23.0%	0.4%	4.5%	0.1%	1.0%	3.4%	0.1%	0.2%	0.2%	0.0%	1.2%	100.0%
24 Hour Totals	12/04/2000	20	3,908	1,513	45	347	35	86	337	11	12	5	2	73	6,394
Percentages	12/04/2000	0.3%	61.1%	23.7%	0.7%	5.4%	0.5%	1.3%	5.3%	0.2%	0.2%	0.1%	0.0%	1.1%	100.0%

**SH-14 w/o I-25 Left Lane****Lanes 1-2 Westbound**

Totals	Date	Cycle	Cars	2a-4T Buses	2A-SU	3A-SU	4A-SU	4A-ST	5A-ST	6A-ST	5A-MT	6A-MT	7A-MT	Other	Total	
24 Hour Totals	12/05/2000	6	2,428	1,618	44	434	27	0	58	42	4	2	0	1	26	4,690
Percentages	12/05/2000	0.1%	51.8%	34.5%	0.9%	9.3%	0.6%	0.0%	1.2%	0.9%	0.1%	0.0%	0.0%	0.0%	0.6%	100.0%
24 Hour Totals	12/06/2000	6	2,280	1,595	46	458	19	0	47	46	5	1	0	0	30	4,533
Percentages	12/06/2000	0.1%	50.3%	35.2%	1.0%	10.1%	0.4%	0.0%	1.0%	1.0%	0.1%	0.0%	0.0%	0.0%	0.7%	100.0%
24 Hour Totals	12/07/2000	11	2,377	1,645	39	447	24	0	62	31	2	3	0	3	36	4,680
Percentages	12/07/2000	0.2%	50.8%	35.1%	0.8%	9.6%	0.5%	0.0%	1.3%	0.7%	0.0%	0.1%	0.0%	0.1%	0.8%	100.0%
24 Hour Totals	12/08/2000	23	4,406	3,003	65	782	40	0	107	51	2	3	0	3	126	8,611
Percentages	12/08/2000	0.3%	51.2%	34.9%	0.8%	9.1%	0.5%	0.0%	1.2%	0.6%	0.0%	0.0%	0.0%	0.0%	1.5%	100.0%

**SH-14 w/o I-25 Right Lane****Lanes 1-2 Westbound**

Totals	Date	Cycle	Cars	2a-4T Buses	2A-SU	3A-SU	4A-SU	4A-ST	5A-ST	6A-ST	5A-MT	6A-MT	7A-MT	Other	Total	
24 Hour Totals	11/30/2000	30	3,123	1,883	93	552	236	9	107	408	43	3	5	74	124	6,690
Percentages	11/30/2000	0.4%	46.7%	28.1%	1.4%	8.3%	3.5%	0.1%	1.6%	6.1%	0.6%	0.0%	0.1%	1.1%	1.9%	100.0%
24 Hour Totals	12/01/2000	41	3,211	1,911	83	594	274	13	85	383	44	3	4	68	106	6,820
Percentages	12/01/2000	0.6%	47.1%	28.0%	1.2%	8.7%	4.0%	0.2%	1.2%	5.6%	0.6%	0.0%	0.1%	1.0%	1.6%	100.0%
24 Hour Totals	12/02/2000	31	3,319	1,860	87	652	333	12	96	336	30	1	0	50	136	6,943
Percentages	12/02/2000	0.4%	47.8%	26.8%	1.3%	9.4%	4.8%	0.2%	1.4%	4.8%	0.4%	0.0%	0.0%	0.7%	2.0%	100.0%
24 Hour Totals	12/03/2000	39	2,775	1,794	35	498	314	6	45	316	23	1	0	53	136	6,035
Percentages	12/03/2000	0.6%	46.0%	29.7%	0.6%	8.3%	5.2%	0.1%	0.7%	5.2%	0.4%	0.0%	0.0%	0.9%	2.3%	100.0%
24 Hour Totals	12/04/2000	40	2,782	1,872	58	434	262	4	46	228	37	0	0	47	127	5,937
Percentages	12/04/2000	0.7%	46.9%	31.5%	1.0%	7.3%	4.4%	0.1%	0.8%	3.8%	0.6%	0.0%	0.0%	0.8%	2.1%	100.0%

## College n/o Harmony Inside/Center Lane

### Lanes 1-2 Northbound

Totals	Date	Cycle	Cars	2a-4T	Buses	2A-SU	3A-SU	4A-SU	4A-ST	5A-ST	6A-ST	5A-MT	6A-MT	7A-MT	Other	Total
24 Hour Totals	11/30/2000	267	7,365	2,137	25	207	796	8	26	44	65	0	0	61	933	11,934
Percentages	11/30/2000	2.2%	61.7%	17.9%	0.2%	1.7%	6.7%	0.1%	0.2%	0.4%	0.5%	0.0%	0.0%	0.5%	7.8%	100.0%
24 Hour Totals	12/01/2000	235	8,081	2,214	23	214	758	5	37	53	41	0	0	85	793	12,539
Percentages	12/01/2000	1.9%	64.4%	17.7%	0.2%	1.7%	6.0%	0.0%	0.3%	0.4%	0.3%	0.0%	0.0%	0.7%	6.3%	100.0%
24 Hour Totals	12/02/2000	247	7,994	2,205	19	162	866	9	36	35	52	0	1	68	709	12,403
Percentages	12/02/2000	2.0%	64.5%	17.8%	0.2%	1.3%	7.0%	0.1%	0.3%	0.3%	0.4%	0.0%	0.0%	0.5%	5.7%	100.0%
24 Hour Totals	12/03/2000	235	7,258	1,783	9	128	784	9	12	23	35	0	0	57	662	10,995
Percentages	12/03/2000	2.1%	66.0%	16.2%	0.1%	1.2%	7.1%	0.1%	0.1%	0.2%	0.3%	0.0%	0.0%	0.5%	6.0%	100.0%
24 Hour Totals	12/04/2000	224	6,853	1,823	28	196	646	6	31	22	42	0	0	63	654	10,588
Percentages	12/04/2000	2.1%	64.7%	17.2%	0.3%	1.9%	6.1%	0.1%	0.3%	0.2%	0.4%	0.0%	0.0%	0.6%	6.2%	100.0%

## College n/o Harmony Inside/Center Lane

### Lanes 1-2 Southbound

Totals	Date	Cycle	Cars	2a-4T	Buses	2A-SU	3A-SU	4A-SU	4A-ST	5A-ST	6A-ST	5A-MT	6A-MT	7A-MT	Other	Total
24 Hour Totals	11/30/2000	6	11,122	1,938	36	285	43	1	59	53	6	1	0	12	1,065	14,627
Percentages	11/30/2000	0.0%	76.0%	13.2%	0.2%	1.9%	0.3%	0.0%	0.4%	0.4%	0.0%	0.0%	0.0%	0.1%	7.3%	100.0%
24 Hour Totals	12/01/2000	7	11,570	2,026	30	280	41	1	50	35	9	0	0	15	1,117	15,181
Percentages	12/01/2000	0.0%	76.2%	13.3%	0.2%	1.8%	0.3%	0.0%	0.3%	0.2%	0.1%	0.0%	0.0%	0.1%	7.4%	100.0%
24 Hour Totals	12/02/2000	6	12,244	1,891	33	212	64	1	30	33	12	0	0	25	1,432	15,983
Percentages	12/02/2000	0.0%	76.6%	11.8%	0.2%	1.3%	0.4%	0.0%	0.2%	0.2%	0.1%	0.0%	0.0%	0.2%	9.0%	100.0%
24 Hour Totals	12/03/2000	5	10,861	1,457	17	178	72	1	18	28	3	0	0	9	1,099	13,748
Percentages	12/03/2000	0.0%	79.0%	10.6%	0.1%	1.3%	0.5%	0.0%	0.1%	0.2%	0.0%	0.0%	0.0%	0.1%	8.0%	100.0%
24 Hour Totals	12/04/2000	5	9,145	1,586	29	218	68	0	28	33	7	0	0	11	940	12,070
Percentages	12/04/2000	0.0%	75.8%	13.1%	0.2%	1.8%	0.6%	0.0%	0.2%	0.3%	0.1%	0.0%	0.0%	0.1%	7.8%	100.0%

## College n/o Harmony Outside Lane

### Lanes 1-1 Northbound

Totals	Date	Cycle	Cars	2a-4T	Buses	2A-SU	3A-SU	4A-SU	4A-ST	5A-ST	6A-ST	5A-MT	6A-MT	7A-MT	Other	Total
24 Hour Totals	11/30/2000	7	2,650	713	5	42	415	98	3	7	7	0	0	19	239	4,205
Percentages	11/30/2000	0.2%	63.0%	17.0%	0.1%	1.0%	9.9%	2.3%	0.1%	0.2%	0.2%	0.0%	0.0%	0.5%	5.7%	100.0%
24 Hour Totals	12/01/2000	13	2,749	932	5	22	390	101	3	9	16	0	0	25	219	4,484
Percentages	12/01/2000	0.3%	61.3%	20.8%	0.1%	0.5%	8.7%	2.3%	0.1%	0.2%	0.4%	0.0%	0.0%	0.6%	4.9%	100.0%
24 Hour Totals	12/02/2000	12	3,150	1,136	6	43	475	124	6	11	12	0	0	23	220	5,218
Percentages	12/02/2000	0.2%	60.4%	21.8%	0.1%	0.8%	9.1%	2.4%	0.1%	0.2%	0.2%	0.0%	0.0%	0.4%	4.2%	100.0%
24 Hour Totals	12/03/2000	6	2,813	837	3	21	526	98	6	6	14	0	0	32	152	4,514
Percentages	12/03/2000	0.1%	62.3%	18.5%	0.1%	0.5%	11.7%	2.2%	0.1%	0.1%	0.3%	0.0%	0.0%	0.7%	3.4%	100.0%
24 Hour Totals	12/04/2000	13	2,545	375	2	21	313	57	6	9	7	0	0	33	120	3,501
Percentages	12/04/2000	0.4%	72.7%	10.7%	0.1%	0.6%	8.9%	1.6%	0.2%	0.3%	0.2%	0.0%	0.0%	0.9%	3.4%	100.0%

## College n/o Harmony Outside Lane

### Lanes 1-1 Southbound

Totals	Date	Cycle	Cars	2a-4T	Buses	2A-SU	3A-SU	4A-SU	4A-ST	5A-ST	6A-ST	5A-MT	6A-MT	7A-MT	Other	Total
24 Hour Totals	11/30/2000	6	3,077	306	2	56	8	0	4	1	1	0	0	0	112	3,573
Percentages	11/30/2000	0.2%	86.1%	8.6%	0.1%	1.6%	0.2%	0.0%	0.1%	0.0%	0.0%	0.0%	0.0%	0.0%	3.1%	100.0%
24 Hour Totals	12/01/2000	5	3,238	357	5	67	7	0	3	0	1	0	0	0	115	3,798
Percentages	12/01/2000	0.1%	85.3%	9.4%	0.1%	1.8%	0.2%	0.0%	0.1%	0.0%	0.0%	0.0%	0.0%	0.0%	3.0%	100.0%
24 Hour Totals	12/02/2000	7	3,645	366	4	56	7	1	4	0	0	0	0	3	131	4,224
Percentages	12/02/2000	0.2%	86.3%	8.7%	0.1%	1.3%	0.2%	0.0%	0.1%	0.0%	0.0%	0.0%	0.0%	0.1%	3.1%	100.0%
24 Hour Totals	12/03/2000	7	2,997	265	1	38	4	1	1	0	0	0	0	1	79	3,394
Percentages	12/03/2000	0.2%	88.3%	7.8%	0.0%	1.1%	0.1%	0.0%	0.0%	0.0%	0.0%	0.0%	0.0%	0.0%	2.3%	100.0%
24 Hour Totals	12/04/2000	5	2,821	253	0	36	13	1	1	1	1	0	0	2	93	3,227
Percentages	12/04/2000	0.2%	87.4%	7.8%	0.0%	1.1%	0.4%	0.0%	0.0%	0.0%	0.0%	0.0%	0.0%	0.1%	2.9%	100.0%

## Owl Canyon Road w/o CR-70

### Lanes 1-2 Eastbound

Totals	Date	Cycle	Cars	2a-4T	Buses	2A-SU	3A-SU	4A-SU	4A-ST	5A-ST	6A-ST	5A-MT	6A-MT	7A-MT	Other	Total
24 Hour Totals	11/30/2000	0	108	77	41	37	7	0	6	30	2	0	0	0	17	325
Percentages	11/30/2000	0.0	33.2%	23.7%	12.6%	11.4%	2.2%	0.0%	1.8%	9.2%	0.6%	0.0%	0.0%	0.0%	5.2%	100.0%
24 Hour Totals	12/01/2000	1	116	71	27	19	4	0	5	36	1	1	0	1	23	305
Percentages	12/01/2000	0.0	38.0%	23.3%	8.9%	6.2%	1.3%	0.0%	1.6%	11.8%	0.3%	0.3%	0.0%	0.3%	7.5%	100.0%
24 Hour Totals	12/02/2000	0	119	65	34	37	7	0	14	14	0	0	0	0	36	326
Percentages	12/02/2000	0.0	36.5%	19.9%	10.4%	11.3%	2.1%	0.0%	4.3%	4.3%	0.0%	0.0%	0.0%	0.0%	11.0%	100.0%
24 Hour Totals	12/03/2000	0	100	86	15	21	1	0	4	2	0	0	0	0	64	293
Percentages	12/03/2000	0.0	34.1%	29.4%	5.1%	7.2%	0.3%	0.0%	1.4%	0.7%	0.0%	0.0%	0.0%	0.0%	21.8%	100.0%
24 Hour Totals	12/04/2000	0	136	78	17	41	5	0	5	16	0	0	1	0	41	340
Percentages	12/04/2000	0.0	40.0%	22.9%	5.0%	12.1%	1.5%	0.0%	1.5%	4.7%	0.0%	0.0%	0.3%	0.0%	12.1%	100.0%

## Owl Canyon Road w/o CR-70

### Lanes 1-2 Westbound

Totals	Date	Cycle	Cars	2a-4T	Buses	2A-SU	3A-SU	4A-SU	4A-ST	5A-ST	6A-ST	5A-MT	6A-MT	7A-MT	Other	Total
24 Hour Totals	11/30/2000	0	122	89	7	25	4	0	6	33	2	0	0	0	6	294
Percentages	11/30/2000	0.0	41.5%	30.3%	2.4%	8.5%	1.4%	0.0%	2.0%	11.2%	0.7%	0.0%	0.0%	0.0%	2.0%	100.0%
24 Hour Totals	12/01/2000	0	137	78	8	16	2	0	7	33	1	0	0	1	7	290
Percentages	12/01/2000	0.0	47.2%	26.9%	2.8%	5.5%	0.7%	0.0%	2.4%	11.4%	0.3%	0.0%	0.0%	0.3%	2.4%	100.0%
24 Hour Totals	12/02/2000	0	172	135	7	31	1	0	9	21	0	0	0	1	11	388
Percentages	12/02/2000	0.0	44.3%	34.8%	1.8%	8.0%	0.3%	0.0%	2.3%	5.4%	0.0%	0.0%	0.0%	0.3%	2.8%	100.0%
24 Hour Totals	12/03/2000	0	162	110	11	18	0	0	6	2	1	0	0	1	10	321
Percentages	12/03/2000	0.0	50.5%	34.3%	3.4%	5.6%	0.0%	0.0%	1.9%	0.6%	0.3%	0.0%	0.0%	0.3%	3.1%	100.0%
24 Hour Totals	12/03/2000	0	144	87	12	23	3	0	2	17	1	0	0	0	4	293
Percentages	12/03/2000	0.0	49.1%	29.7%	4.1%	7.8%	1.0%	0.0%	0.7%	5.8%	0.3%	0.0%	0.0%	0.0%	1.4%	100.0%

## Shields n/o Harmony

### Lanes 1-2 Northbound

Totals	Date	Cycle	Cars	2a-4T	Buses	2A-SU	3A-SU	4A-SU	4A-ST	5A-ST	6A-ST	6A-MT	7A-MT	Other	Total
24 Hour Totals	11/30/2000	81	8,228	1,549	38	204	70	8	50	28	13	0	7	774	11,050
Percentages	11/30/2000	0.7%	74.5%	14.0%	0.3%	1.8%	0.6%	0.1%	0.5%	0.3%	0.1%	0.0%	0.1%	7.0%	100.0%
24 Hour Totals	12/01/2000	69	8,632	1,547	33	192	43	7	39	19	9	1	10	654	11,255
Percentages	12/01/2000	0.6%	76.7%	13.7%	0.3%	1.7%	0.4%	0.1%	0.3%	0.2%	0.1%	0.0%	0.1%	5.8%	100.0%
24 Hour Totals	12/02/2000	101	7,832	1,431	29	150	50	3	42	15	11	0	7	598	10,269
Percentages	12/02/2000	1.0%	76.3%	13.9%	0.3%	1.5%	0.5%	0.0%	0.4%	0.1%	0.1%	0.0%	0.1%	5.8%	100.0%
24 Hour Totals	12/03/2000	137	7,339	1,253	12	105	59	5	24	7	8	0	11	545	9,505
Percentages	12/03/2000	1.4%	77.2%	13.2%	0.1%	1.1%	0.6%	0.1%	0.3%	0.1%	0.1%	0.0%	0.1%	5.7%	100.0%
24 Hour Totals	12/03/2000	100	7,045	1,188	16	117	58	12	52	24	13	0	11	596	9,232
Percentages	12/03/2000	1.1%	76.3%	12.9%	0.2%	1.3%	0.6%	0.1%	0.6%	0.3%	0.1%	0.0%	0.1%	6.5%	100.0%

## Shields n/o Harmony

### Lanes 1-2 Southbound

Totals	Date	Cycle	Cars	2a-4T	Buses	2A-SU	3A-SU	4A-SU	4A-ST	5A-ST	6A-ST	6A-MT	7A-MT	Other	Total
24 Hour Totals	11/30/2000	133	8,288	1,153	16	104	345	17	41	19	21	0	44	1,168	11,349
Percentages	11/30/2000	1.2%	73.0%	10.2%	0.1%	0.9%	3.0%	0.1%	0.4%	0.2%	0.2%	0.0%	0.4%	10.3%	100.0%
24 Hour Totals	12/01/2000	126	8,291	1,131	22	90	397	19	36	18	15	0	29	1,317	11,491
Percentages	12/01/2000	1.1%	72.2%	9.8%	0.2%	0.8%	3.5%	0.2%	0.3%	0.2%	0.1%	0.0%	0.3%	11.5%	100.0%
24 Hour Totals	12/02/2000	166	8,198	1,044	17	76	311	16	28	21	23	0	21	1,038	10,959
Percentages	12/02/2000	1.5%	74.8%	9.5%	0.2%	0.7%	2.8%	0.1%	0.3%	0.2%	0.2%	0.0%	0.2%	9.5%	100.0%
24 Hour Totals	12/03/2000	130	7,390	888	8	53	186	12	19	11	16	0	13	743	9,469
Percentages	12/03/2000	1.4%	78.0%	9.4%	0.1%	0.6%	2.0%	0.1%	0.2%	0.1%	0.2%	0.0%	0.1%	7.8%	100.0%
24 Hour Totals	12/03/2000	118	7,461	915	9	65	206	8	30	14	19	0	10	770	9,625
Percentages	12/03/2000	1.2%	77.5%	9.5%	0.1%	0.7%	2.1%	0.1%	0.3%	0.1%	0.2%	0.0%	0.1%	8.0%	100.0%

## US 287 n/o Owl Canyon Road

### Lanes 1-2 Northbound

Totals	Date	Cycle	Cars	2a-4T	Buses	2A-SU	3A-SU	4A-SU	4A-ST	5A-ST	6A-ST	5A-MT	6A-MT	7A-MT	Other	Total
24 Hour Totals	11/30/2000	10	1,164	563	25	176	39	0	81	390	11	17	20	0	93	2,589
Percentages	11/30/2000	0	45.0%	21.7%	1.0%	6.8%	1.5%	0.0%	3.1%	15.1%	0.4%	0.7%	0.8%	0.0%	3.6%	100.0%
24 Hour Totals	12/01/2000	14	1,205	527	22	182	28	0	63	403	9	20	18	0	83	2,574
Percentages	12/01/2000	0	46.8%	20.5%	0.9%	7.1%	1.1%	0.0%	2.4%	15.7%	0.3%	0.8%	0.7%	0.0%	3.2%	100.0%
24 Hour Totals	12/02/2000	13	1,827	931	17	256	16	0	88	299	13	20	9	1	92	3,582
Percentages	12/02/2000	0	51.0%	26.0%	0.5%	7.1%	0.4%	0.0%	2.5%	8.3%	0.4%	0.6%	0.3%	0.0%	2.6%	100.0%
24 Hour Totals	12/03/2000	10	1,850	860	18	226	9	0	59	262	3	11	6	1	85	3,400
Percentages	12/03/2000	0	54.4%	25.3%	0.5%	6.6%	0.3%	0.0%	1.7%	7.7%	0.1%	0.3%	0.2%	0.0%	2.5%	100.0%
24 Hour Totals	12/04/2000	3	1,311	586	17	158	16	0	61	316	4	16	16	1	70	2,575
Percentages	12/04/2000	0	50.9%	22.8%	0.7%	6.1%	0.6%	0.0%	2.4%	12.3%	0.2%	0.6%	0.6%	0.0%	2.7%	100.0%

## US 287 n/o Owl Canyon Road

### Lanes 1-2 Southbound

Totals	Date	Cycle	Cars	2a-4T	Buses	2A-SU	3A-SU	4A-SU	4A-ST	5A-ST	6A-ST	5A-MT	6A-MT	7A-MT	Other	Total
24 Hour Totals	11/30/2000	2	1,192	538	9	62	43	1	69	270	12	6	1	1	50	2,256
Percentages	11/30/2000	0	52.8%	23.8%	0.4%	2.7%	1.9%	0.0%	3.1%	12.0%	0.5%	0.3%	0.0%	0.0%	2.2%	100.0%
24 Hour Totals	12/01/2000	0	1,256	554	13	72	24	0	82	335	6	18	16	2	49	2,427
Percentages	12/01/2000	0	51.8%	22.8%	0.5%	3.0%	1.0%	0.0%	3.4%	13.8%	0.2%	0.7%	0.7%	0.1%	2.0%	100.0%
24 Hour Totals	12/02/2000	4	1,600	658	9	69	24	0	68	242	9	13	7	0	76	2,779
Percentages	12/02/2000	0	57.6%	23.7%	0.3%	2.5%	0.9%	0.0%	2.4%	8.7%	0.3%	0.5%	0.3%	0.0%	2.7%	100.0%
24 Hour Totals	12/03/2000	5	1,814	750	6	144	4	1	64	203	6	13	14	1	65	3,090
Percentages	12/03/2000	0	58.7%	24.3%	0.2%	4.7%	0.1%	0.0%	2.1%	6.6%	0.2%	0.4%	0.5%	0.0%	2.1%	100.0%
24 Hour Totals	12/04/2000	5	2,035	892	11	131	10	0	80	255	9	14	8	0	63	3,513
Percentages	12/04/2000	0	57.9%	25.4%	0.3%	3.7%	0.3%	0.0%	2.3%	7.3%	0.3%	0.4%	0.2%	0.0%	1.8%	100.0%

## Vine Drive e/o US 287

### Lanes 1-2 West/East Combined

Totals	Date	Cycle	Cars	2a-4T	Buses	2A-SU	3A-SU	4A-SU	4A-ST	5A-ST	6A-ST	5A-MT	6A-MT	7A-MT	Other	Total
24 Hour Totals	11/30/2000	74	2,286	960	32	269	112	4	44	200	18	1	11	9	152	4,172
Percentages	11/30/2000	1.8%	54.8%	23.0%	0.8%	6.4%	2.7%	0.1%	1.1%	4.8%	0.4%	0.0%	0.3%	0.2%	3.6%	100.0%
24 Hour Totals	12/01/2000	60	2,254	978	29	263	144	5	53	247	8	0	5	8	155	4,209
Percentages	12/01/2000	1.4%	53.6%	23.2%	0.7%	6.2%	3.4%	0.1%	1.3%	5.9%	0.2%	0.0%	0.1%	0.2%	3.7%	100.0%
24 Hour Totals	12/02/2000	55	2,200	917	23	242	103	6	45	152	12	0	4	5	140	3,904
Percentages	12/02/2000	1.4%	56.4%	23.5%	0.6%	6.2%	2.6%	0.2%	1.2%	3.9%	0.3%	0.0%	0.1%	0.1%	3.6%	100.0%
24 Hour Totals	12/03/2000	42	1,759	654	3	129	21	1	22	15	3	0	0	1	50	2,700
Percentages	12/03/2000	1.6%	65.1%	24.2%	0.1%	4.8%	0.8%	0.0%	0.8%	0.6%	0.1%	0.0%	0.0%	0.0%	1.9%	100.0%
24 Hour Totals	12/03/2000	56	1,761	695	14	142	43	2	32	91	8	2	2	5	102	2,955
Percentages	12/03/2000	1.9%	59.6%	23.5%	0.5%	4.8%	1.5%	0.1%	1.1%	3.1%	0.3%	0.1%	0.1%	0.2%	3.5%	100.0%

## APPENDIX B

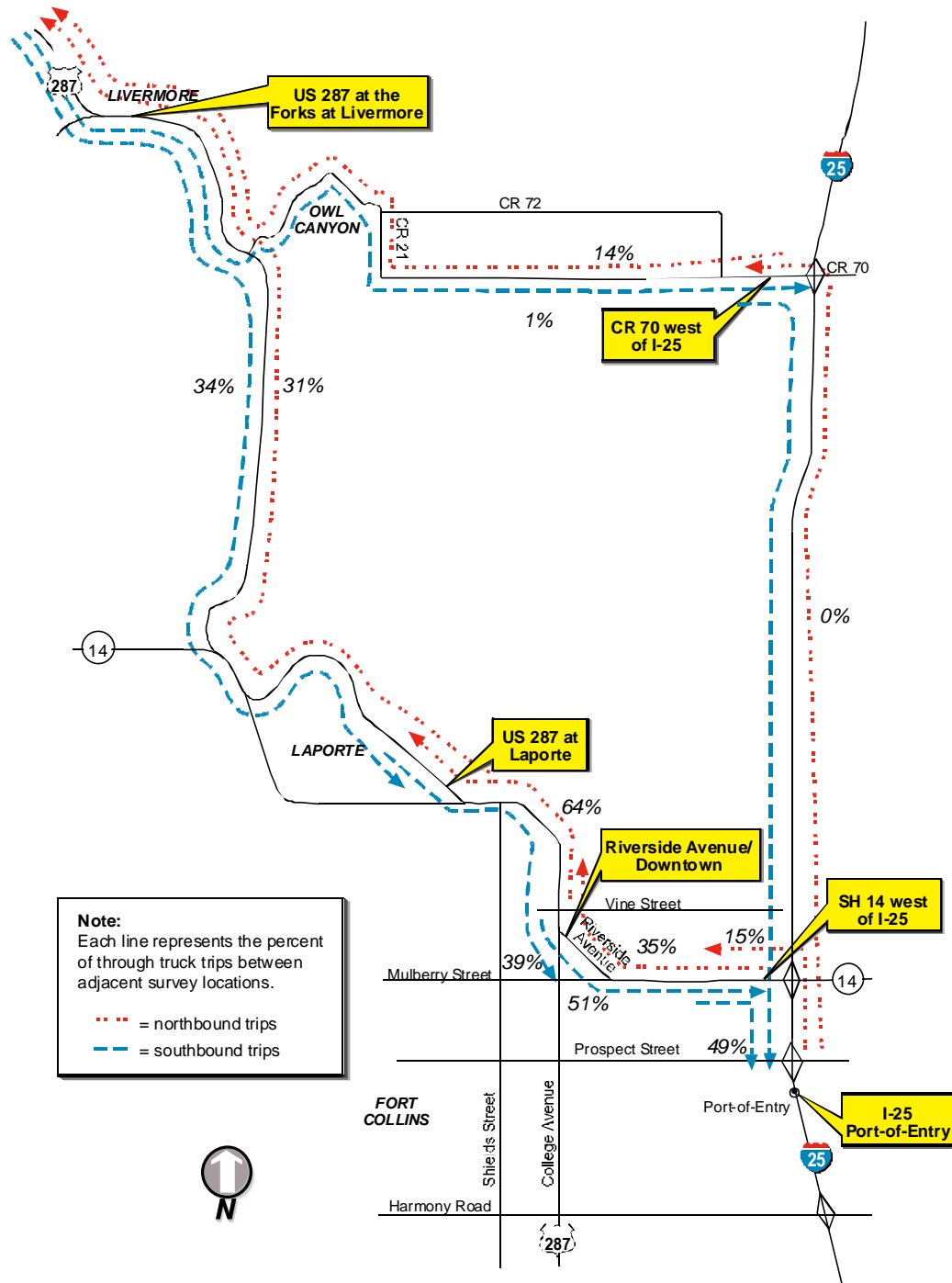


As a first step in the determination of the external-to-external trips, through percentages between each of the survey stations were calculated. These percentages answer the question, “How many trucks were through trucks between survey station A and the adjacent survey station B?” With six survey stations, there are six station pairs in each direction where this analysis was performed. Refer to **Table B-1** and **Figure B-1**. As can be seen, the only station-to-station segment with more than 50 percent through trucks is the Riverside/Laporte segment, with 64 percent northbound through trips and 51 percent southbound through trips.

**Table B-1 – Station-to-Station Percentages**

<b>From</b>	<b>To</b>	<b>% Through Trips</b>
<b>Northbound</b>		
I-25 at Port of Entry	SH 14 west of I-25	15.1%
I-25 at Port of Entry	CR 70 west of I-25	0.0%
SH 14 west of I-25	Riverside Ave./Downtown	34.7%
Riverside Ave./Downtown	US 287 near Laporte Ave	63.7%
US 287 near Laporte Ave	US 287 at the Forks at Livermore	31.2%
CR 70 west of I-25	US 287 at the Forks at Livermore	14.3%
<b>Southbound</b>		
US 287 at the Forks at Livermore	CR 70 west of I-25	0.6%
US 287 at the Forks at Livermore	US 287 near Laporte Ave	33.6%
US 287 near Laporte Ave	Riverside Ave./Downtown	38.7%
Riverside Ave./Downtown	SH 14 west of I-25	50.9%
SH 14 west of I-25	I-25 at Port of Entry	48.7%
CR 70 west of I-25	I-25 at Port of Entry	26.3%

**Figure B-1  
 Station-to-Station Travel Patterns**



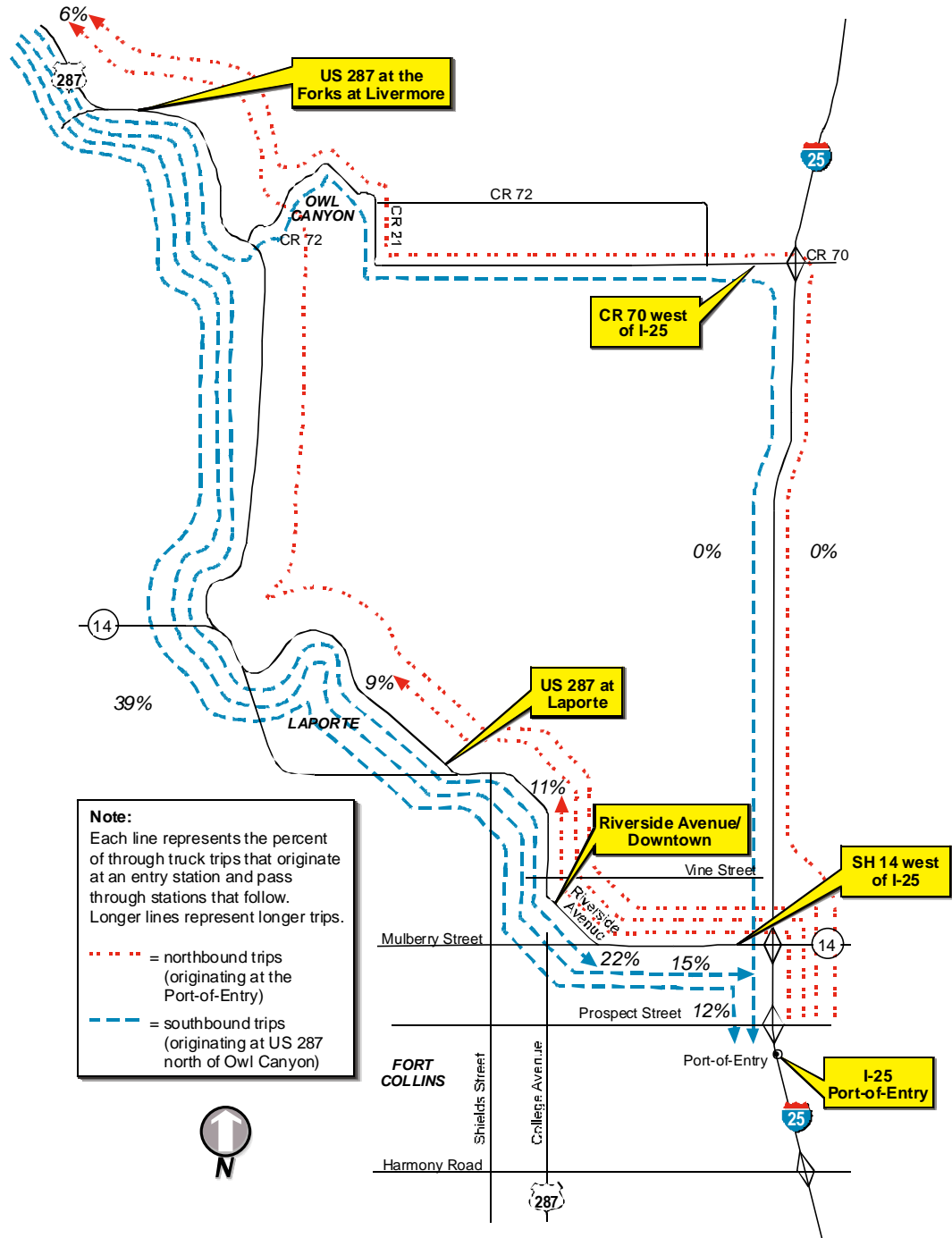
After completion of the station-to-station matches, the matching was expanded to cover multiple segments of the route. In other words, the next analysis answered the question, “How many trucks traveled along the corridor from station A, through station B, to station C?” With the survey stations defined for this study, there are seven of these scenarios in each direction. There is a possible source of error in these data, since a vehicle recorded at station A and station C may not have been recorded at station B. Therefore, two matches were performed, one which looked only at the endpoint stations (station A and station C), and a second match that included all stations (stations A, B and C). Another element that required extra attention was the Port-of-Entry/US 287 at the Forks at Livermore pair. When these stations were examined without intermediate stations, there was no way to determine if the matches were from the I-25 to CR 70/CR 72 route or the I-25/SH 14/US 287 route. This was clarified by the inclusion of intermediate stations. Refer to **Table B-2** and **Figure B-2** for these results.

**Table B–2 – Combined Station Results**

<b>From</b>	<b>To</b>	<b>% Through Trips</b>	<b>% Through Trips w/ Intermediate Stations</b>
<b>Northbound</b>			
I-25 at Port of Entry	Riverside Ave./Downtown	14.6%	11.0%
I-25 at Port of Entry	US 287 near Laporte Ave	13.7%	8.6%
I-25 at Port of Entry	US 287 at the Forks at Livermore (via 287)	8.5%	5.5%
I-25 at Port of Entry	US 287 at the Forks at Livermore (via CR 72)		0.0%
SH 14 west of I-25	US 287 near Laporte Ave	30.3%	26.7%
SH 14 west of I-25	US 287 at the Forks at Livermore	17.1%	14.0%
Riverside Ave./Downtown	US 287 at the Forks at Livermore	34.8%	30.8%
<b>Southbound</b>			
US 287 at the Forks at Livermore	Riverside Ave./Downtown	26.7%	22.0%
US 287 at the Forks at Livermore	SH 14 west of I-25	22.3%	14.9%
US 287 at the Forks at Livermore	I-25 at Port of Entry (via 287)	22.0%	12.1%
US 287 at the Forks at Livermore	I-25 at Port of Entry (via CR 72)		0.3%
US 287 near Laporte Ave	SH 14 west of I-25	31.6%	25.3%
US 287 near Laporte Ave	I-25 at Port of Entry	31.4%	20.6%
Riverside Ave./Downtown	I-25 at Port of Entry	45.5%	37.2%

An overall summary of the truck survey data collected follows **Figure B-2**.

**Figure B-2  
 Combined Station Travel Patterns**



## Hourly Truck Count

06/05/2001

Date	Direction	Count Location	Hour	MinTime	MaxTime	Trucks
11/29/2000	N	1	7	7:00:00 AM	7:55:00 AM	12
11/29/2000	N	1	8	8:00:00 AM	8:55:00 AM	24
11/29/2000	N	1	9	9:00:00 AM	9:25:00 AM	47
11/29/2000	N	1	11	11:00:00 AM	11:55:00 AM	126
11/29/2000	N	1	12	12:00:00 PM	12:55:00 PM	128
11/29/2000	N	1	14	2:30:00 PM	2:55:00 PM	59
11/29/2000	N	1	15	3:00:00 PM	3:55:00 PM	100
11/29/2000	N	1	16	4:00:00 PM	4:55:00 PM	94
11/29/2000	N	2	7	7:00:00 AM	7:55:00 AM	38
11/29/2000	N	2	8	8:00:00 AM	8:55:00 AM	44
11/29/2000	N	2	9	9:00:00 AM	9:25:00 AM	27
11/29/2000	N	2	11	11:00:00 AM	11:55:00 AM	58
11/29/2000	N	2	12	12:00:00 PM	12:55:00 PM	52
11/29/2000	N	2	14	2:30:00 PM	2:55:00 PM	23
11/29/2000	N	2	15	3:00:00 PM	3:55:00 PM	58
11/29/2000	N	2	16	4:00:00 PM	4:55:00 PM	52
11/29/2000	N	3	7	7:00:00 AM	7:50:00 AM	21
11/29/2000	N	3	8	8:00:00 AM	8:55:00 AM	26
11/29/2000	N	3	9	9:00:00 AM	9:25:00 AM	9
11/29/2000	N	3	11	11:00:00 AM	11:55:00 AM	51
11/29/2000	N	3	12	12:00:00 PM	12:55:00 PM	37
11/29/2000	N	3	14	2:30:00 PM	2:55:00 PM	11
11/29/2000	N	3	15	3:00:00 PM	3:55:00 PM	28
11/29/2000	N	3	16	4:00:00 PM	4:55:00 PM	35
11/29/2000	N	4	7	7:00:00 AM	7:55:00 AM	23
11/29/2000	N	4	8	8:00:00 AM	8:55:00 AM	33
11/29/2000	N	4	9	9:00:00 AM	9:25:00 AM	23
11/29/2000	N	4	11	11:00:00 AM	11:55:00 AM	55
11/29/2000	N	4	12	12:00:00 PM	12:55:00 PM	60
11/29/2000	N	4	14	2:30:00 PM	2:55:00 PM	18
11/29/2000	N	4	15	3:00:00 PM	3:55:00 PM	50
11/29/2000	N	4	16	4:00:00 PM	4:55:00 PM	49
11/29/2000	N	5	7	7:00:00 AM	7:55:00 AM	21
11/29/2000	N	5	8	8:00:00 AM	8:50:00 AM	24
11/29/2000	N	5	9	9:00:00 AM	9:25:00 AM	18
11/29/2000	N	5	11	11:00:00 AM	11:55:00 AM	51
11/29/2000	N	5	12	12:00:00 PM	12:55:00 PM	38
11/29/2000	N	5	14	2:30:00 PM	2:55:00 PM	17
11/29/2000	N	5	15	3:00:00 PM	3:55:00 PM	31
11/29/2000	N	5	16	4:00:00 PM	4:40:00 PM	32
11/29/2000	N	6	7	7:20:00 AM	7:55:00 AM	3
11/29/2000	N	6	8	8:15:00 AM	8:40:00 AM	2
11/29/2000	N	6	9	9:05:00 AM	9:15:00 AM	2
11/29/2000	S	1	7	7:00:00 AM	7:55:00 AM	67
11/29/2000	S	1	8	8:00:00 AM	8:55:00 AM	101
11/29/2000	S	1	9	9:00:00 AM	9:25:00 AM	52
11/29/2000	S	1	11	11:00:00 AM	11:55:00 AM	110
11/29/2000	S	1	12	12:00:00 PM	12:55:00 PM	90
11/29/2000	S	1	14	2:30:00 PM	2:55:00 PM	51

## Hourly Truck Count

06/05/2001

Date	Direction	Count Location	Hour	MinTime	MaxTime	Trucks	
11/29/2000	S		1	15	3:00:00 PM	3:55:00 PM	90
11/29/2000	S		1	16	4:00:00 PM	4:55:00 PM	97
11/29/2000	S		2	7	7:05:00 AM	7:55:00 AM	31
11/29/2000	S		2	8	8:00:00 AM	8:55:00 AM	57
11/29/2000	S		2	9	9:00:00 AM	9:25:00 AM	27
11/29/2000	S		2	11	11:00:00 AM	11:55:00 AM	51
11/29/2000	S		2	12	12:00:00 PM	12:55:00 PM	57
11/29/2000	S		2	14	2:30:00 PM	2:55:00 PM	30
11/29/2000	S		2	15	3:00:00 PM	3:50:00 PM	43
11/29/2000	S		2	16	4:00:00 PM	4:55:00 PM	46
11/29/2000	S		3	7	7:00:00 AM	7:55:00 AM	21
11/29/2000	S		3	8	8:00:00 AM	8:55:00 AM	44
11/29/2000	S		3	9	9:05:00 AM	9:25:00 AM	13
11/29/2000	S		3	11	11:00:00 AM	11:55:00 AM	30
11/29/2000	S		3	12	12:00:00 PM	12:50:00 PM	36
11/29/2000	S		3	14	2:30:00 PM	2:55:00 PM	16
11/29/2000	S		3	15	3:00:00 PM	3:50:00 PM	28
11/29/2000	S		3	16	4:00:00 PM	4:55:00 PM	35
11/29/2000	S		4	7	7:00:00 AM	7:55:00 AM	27
11/29/2000	S		4	8	8:00:00 AM	8:55:00 AM	45
11/29/2000	S		4	9	9:00:00 AM	9:25:00 AM	17
11/29/2000	S		4	11	11:00:00 AM	11:55:00 AM	46
11/29/2000	S		4	12	12:00:00 PM	12:55:00 PM	49
11/29/2000	S		4	14	2:30:00 PM	2:55:00 PM	24
11/29/2000	S		4	15	3:00:00 PM	3:55:00 PM	37
11/29/2000	S		4	16	4:00:00 PM	4:55:00 PM	48
11/29/2000	S		5	7	7:05:00 AM	7:55:00 AM	22
11/29/2000	S		5	8	8:00:00 AM	8:55:00 AM	31
11/29/2000	S		5	9	9:00:00 AM	9:25:00 AM	10
11/29/2000	S		5	11	11:00:00 AM	11:55:00 AM	35
11/29/2000	S		5	12	12:00:00 PM	12:55:00 PM	32
11/29/2000	S		5	14	2:30:00 PM	2:55:00 PM	20
11/29/2000	S		5	15	3:00:00 PM	3:55:00 PM	29
11/29/2000	S		5	16	4:05:00 PM	4:40:00 PM	27
11/29/2000	S		6	7	7:05:00 AM	7:55:00 AM	9
11/29/2000	S		6	8	8:00:00 AM	8:55:00 AM	16
11/29/2000	S		6	9	9:00:00 AM	9:25:00 AM	13
11/30/2000	N		1	7	7:00:00 AM	7:55:00 AM	73
11/30/2000	N		1	8	8:00:00 AM	8:55:00 AM	93
11/30/2000	N		1	9	9:00:00 AM	9:25:00 AM	52
11/30/2000	N		1	11	11:00:00 AM	11:55:00 AM	112
11/30/2000	N		1	12	12:00:00 PM	12:55:00 PM	102
11/30/2000	N		1	14	2:30:00 PM	2:55:00 PM	52
11/30/2000	N		1	15	3:00:00 PM	3:55:00 PM	101
11/30/2000	N		1	16	4:00:00 PM	4:55:00 PM	92
11/30/2000	N		2	7	7:00:00 AM	7:55:00 AM	32
11/30/2000	N		2	8	8:00:00 AM	8:55:00 AM	41
11/30/2000	N		2	9	9:00:00 AM	9:25:00 AM	23
11/30/2000	N		2	11	11:00:00 AM	11:50:00 AM	41

## Hourly Truck Count

06/05/2001

Date	Direction	Count Location	Hour	MinTime	MaxTime	Trucks
11/30/2000	N	2	12	12:00:00 PM	12:55:00 PM	50
11/30/2000	N	2	14	2:30:00 PM	2:55:00 PM	27
11/30/2000	N	2	15	3:00:00 PM	3:55:00 PM	41
11/30/2000	N	2	16	4:00:00 PM	4:55:00 PM	44
11/30/2000	N	3	7	7:05:00 AM	7:55:00 AM	22
11/30/2000	N	3	8	8:05:00 AM	8:55:00 AM	26
11/30/2000	N	3	9	9:05:00 AM	9:25:00 AM	12
11/30/2000	N	3	11	11:00:00 AM	11:55:00 AM	34
11/30/2000	N	3	12	12:00:00 PM	12:55:00 PM	21
11/30/2000	N	3	14	2:30:00 PM	2:55:00 PM	23
11/30/2000	N	3	15	3:00:00 PM	3:50:00 PM	32
11/30/2000	N	3	16	4:00:00 PM	4:55:00 PM	31
11/30/2000	N	4	7	7:00:00 AM	7:55:00 AM	34
11/30/2000	N	4	8	8:00:00 AM	8:55:00 AM	38
11/30/2000	N	4	9	9:00:00 AM	9:25:00 AM	25
11/30/2000	N	4	11	11:00:00 AM	11:55:00 AM	64
11/30/2000	N	4	12	12:00:00 PM	12:55:00 PM	42
11/30/2000	N	4	14	2:30:00 PM	2:55:00 PM	18
11/30/2000	N	4	15	3:00:00 PM	3:55:00 PM	47
11/30/2000	N	4	16	4:00:00 PM	4:55:00 PM	55
11/30/2000	N	5	7	7:00:00 AM	7:55:00 AM	25
11/30/2000	N	5	8	8:00:00 AM	8:55:00 AM	29
11/30/2000	N	5	9	9:00:00 AM	9:25:00 AM	17
11/30/2000	N	5	11	11:00:00 AM	11:55:00 AM	45
11/30/2000	N	5	12	12:00:00 PM	12:55:00 PM	30
11/30/2000	N	5	14	2:30:00 PM	2:55:00 PM	24
11/30/2000	N	5	15	3:00:00 PM	3:55:00 PM	46
11/30/2000	N	5	16	4:00:00 PM	4:25:00 PM	9
11/30/2000	S	1	7	7:00:00 AM	7:55:00 AM	82
11/30/2000	S	1	8	8:00:00 AM	8:55:00 AM	97
11/30/2000	S	1	9	9:00:00 AM	9:25:00 AM	56
11/30/2000	S	1	11	11:00:00 AM	11:55:00 AM	102
11/30/2000	S	1	12	12:00:00 PM	12:55:00 PM	106
11/30/2000	S	1	14	2:30:00 PM	2:55:00 PM	48
11/30/2000	S	1	15	3:00:00 PM	3:55:00 PM	94
11/30/2000	S	1	16	4:00:00 PM	4:55:00 PM	103
11/30/2000	S	2	7	7:05:00 AM	7:55:00 AM	32
11/30/2000	S	2	8	8:05:00 AM	8:55:00 AM	30
11/30/2000	S	2	9	9:00:00 AM	9:25:00 AM	28
11/30/2000	S	2	11	11:05:00 AM	11:55:00 AM	40
11/30/2000	S	2	12	12:00:00 PM	12:55:00 PM	34
11/30/2000	S	2	14	2:30:00 PM	2:55:00 PM	17
11/30/2000	S	2	15	3:00:00 PM	3:55:00 PM	31
11/30/2000	S	2	16	4:00:00 PM	4:55:00 PM	42
11/30/2000	S	3	7	7:00:00 AM	7:55:00 AM	23
11/30/2000	S	3	8	8:00:00 AM	8:55:00 AM	30
11/30/2000	S	3	9	9:00:00 AM	9:25:00 AM	22
11/30/2000	S	3	11	11:00:00 AM	11:55:00 AM	25
11/30/2000	S	3	12	12:00:00 PM	12:55:00 PM	33

## Hourly Truck Count

06/05/2001

Date	Direction	Count Location	Hour	MinTime	MaxTime	Trucks
11/30/2000	S	3	14	2:30:00 PM	2:50:00 PM	11
11/30/2000	S	3	15	3:05:00 PM	3:55:00 PM	27
11/30/2000	S	3	16	4:00:00 PM	4:55:00 PM	28
11/30/2000	S	4	7	7:00:00 AM	7:55:00 AM	33
11/30/2000	S	4	8	8:00:00 AM	8:55:00 AM	31
11/30/2000	S	4	9	9:00:00 AM	9:25:00 AM	24
11/30/2000	S	4	11	11:05:00 AM	11:55:00 AM	28
11/30/2000	S	4	12	12:00:00 PM	12:55:00 PM	47
11/30/2000	S	4	14	2:30:00 PM	2:55:00 PM	28
11/30/2000	S	4	15	3:00:00 PM	3:55:00 PM	51
11/30/2000	S	4	16	4:05:00 PM	4:45:00 PM	38
11/30/2000	S	5	0	01/14/1900	01/14/1900	1
11/30/2000	S	5	7	7:00:00 AM	7:55:00 AM	21
11/30/2000	S	5	8	8:00:00 AM	8:55:00 AM	24
11/30/2000	S	5	9	9:05:00 AM	9:25:00 AM	7
11/30/2000	S	5	11	11:05:00 AM	11:55:00 AM	25
11/30/2000	S	5	12	12:05:00 PM	12:55:00 PM	31
11/30/2000	S	5	14	2:30:00 PM	2:55:00 PM	12
11/30/2000	S	5	15	3:05:00 PM	3:55:00 PM	23
11/30/2000	S	5	16	4:00:00 PM	4:20:00 PM	13
01/16/2001	N	2	19	7:00:00 PM	7:59:00 PM	13
01/16/2001	N	2	20	8:00:00 PM	8:16:00 PM	6
01/16/2001	N	2	21	9:02:00 PM	9:28:00 PM	9
01/16/2001	N	2	22	10:40:00 PM	10:50:00 PM	4
01/16/2001	N	2	23	11:09:00 PM	11:49:00 PM	13
01/16/2001	N	3	19	7:00:00 PM	7:57:00 PM	11
01/16/2001	N	3	20	8:04:00 PM	8:39:00 PM	8
01/16/2001	N	3	21	9:09:00 PM	9:29:00 PM	8
01/16/2001	N	3	22	10:52:00 PM	10:57:00 PM	4
01/16/2001	N	3	23	11:18:00 PM	11:56:00 PM	11
01/16/2001	N	5	19	7:02:00 PM	7:55:00 PM	15
01/16/2001	N	5	20	8:01:00 PM	8:49:00 PM	12
01/16/2001	N	5	21	9:04:00 PM	9:30:00 PM	3
01/16/2001	N	5	22	10:36:00 PM	10:57:00 PM	7
01/16/2001	N	5	23	11:17:00 PM	11:46:00 PM	9
01/16/2001	S	2	19	7:02:00 PM	7:59:00 PM	18
01/16/2001	S	2	20	8:00:00 PM	8:51:00 PM	9
01/16/2001	S	2	21	9:00:00 PM	9:04:00 PM	2
01/16/2001	S	2	22	10:29:00 PM	10:57:00 PM	11
01/16/2001	S	2	23	11:04:00 PM	11:51:00 PM	7
01/16/2001	S	3	19	7:07:00 PM	7:52:00 PM	14
01/16/2001	S	3	20	8:19:00 PM	8:57:00 PM	8
01/16/2001	S	3	21	9:26:00 PM	9:29:00 PM	3
01/16/2001	S	3	22	10:30:00 PM	10:56:00 PM	7
01/16/2001	S	3	23	11:10:00 PM	11:43:00 PM	6
01/16/2001	S	5	19	7:12:00 PM	7:56:00 PM	11
01/16/2001	S	5	20	8:03:00 PM	8:58:00 PM	9
01/16/2001	S	5	21	9:02:00 PM	9:16:00 PM	5
01/16/2001	S	5	22	10:36:00 PM	10:55:00 PM	3

## Hourly Truck Count

06/05/2001

Date	Direction	Count Location	Hour	MinTime	MaxTime	Trucks	
01/16/2001	S		5	23	11:01:00 PM	11:58:00 PM	17
01/17/2001	N		2	0	12:01:00 AM	12:59:00 AM	18
01/17/2001	N		3	0	12:08:00 AM	12:55:00 AM	16
01/17/2001	N		5	0	12:02:00 AM	12:53:00 AM	16
01/17/2001	N		5	1	1:00:00 AM	1:00:00 AM	2
01/17/2001	S		2	0	12:11:00 AM	12:44:00 AM	16
01/17/2001	S		3	0	12:03:00 AM	12:59:00 AM	14
01/17/2001	S		5	0	12:08:00 AM	12:55:00 AM	5