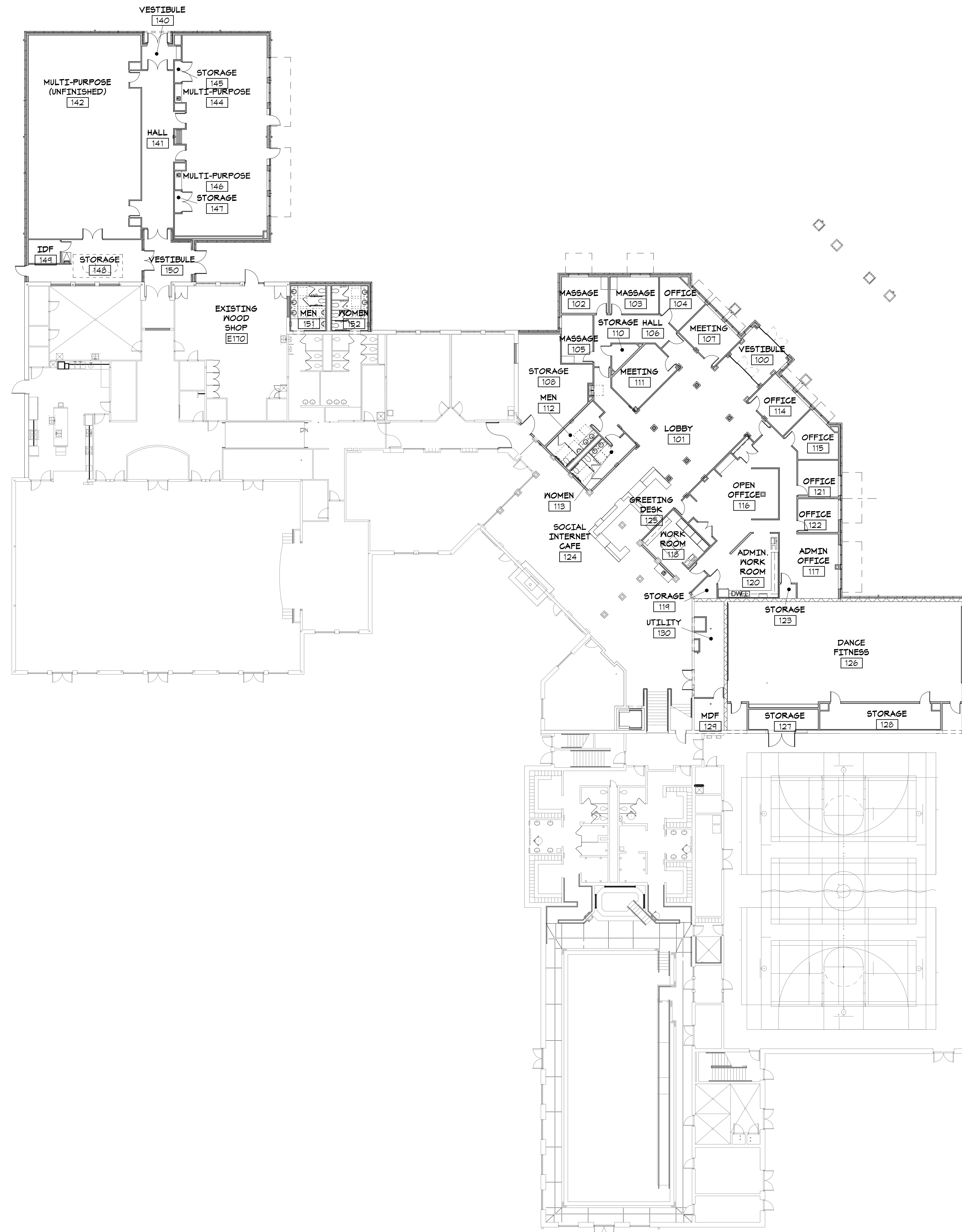


2 OVERALL UPPER LEVEL FLOORPLAN  
AS-18 1/8" = 1'-0"



1 OVERALL LOUNGE/LOWER LEVEL FLOOR PLAN  
AS-18 1/8" = 1'-0"

**SENIOR CENTER EXPANSION**  
**CITY OF FORT COLLINS**  
1200 RAIN TREE DRIVE, FORT COLLINS, CO

OVERALL FLOOR  
PLANS

Issued For SD:	07/18/13
Issued For DD:	09/06/13
Issued For Permit:	09/06/13
Issued For Construction:	
Revision Number	Revision Date

Plot Date 9/5/2013 5:29:20 PM

2761

A3.16