

West Central Area Plan

Welcome to the Prospect Corridor Design Workshop

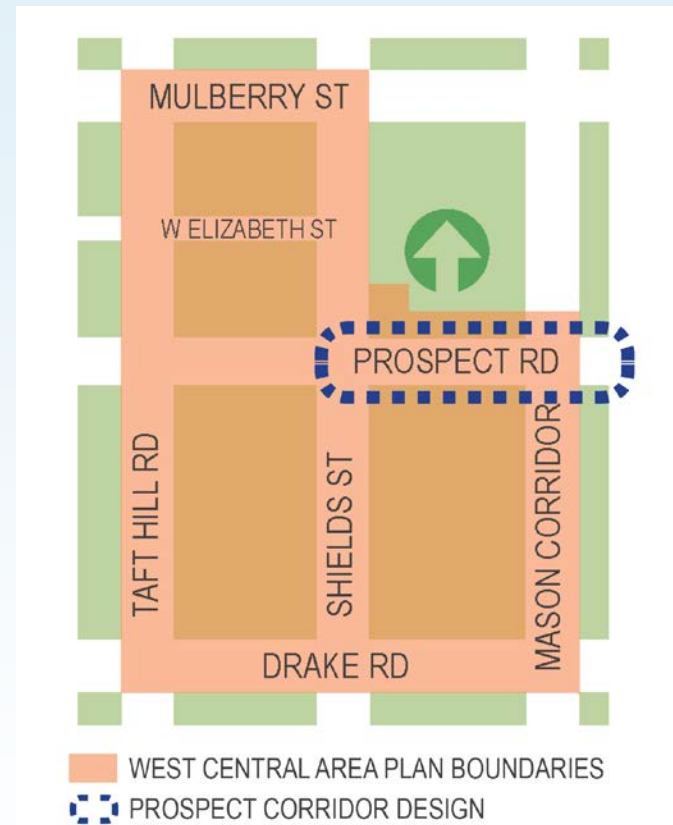
October 27, 2014

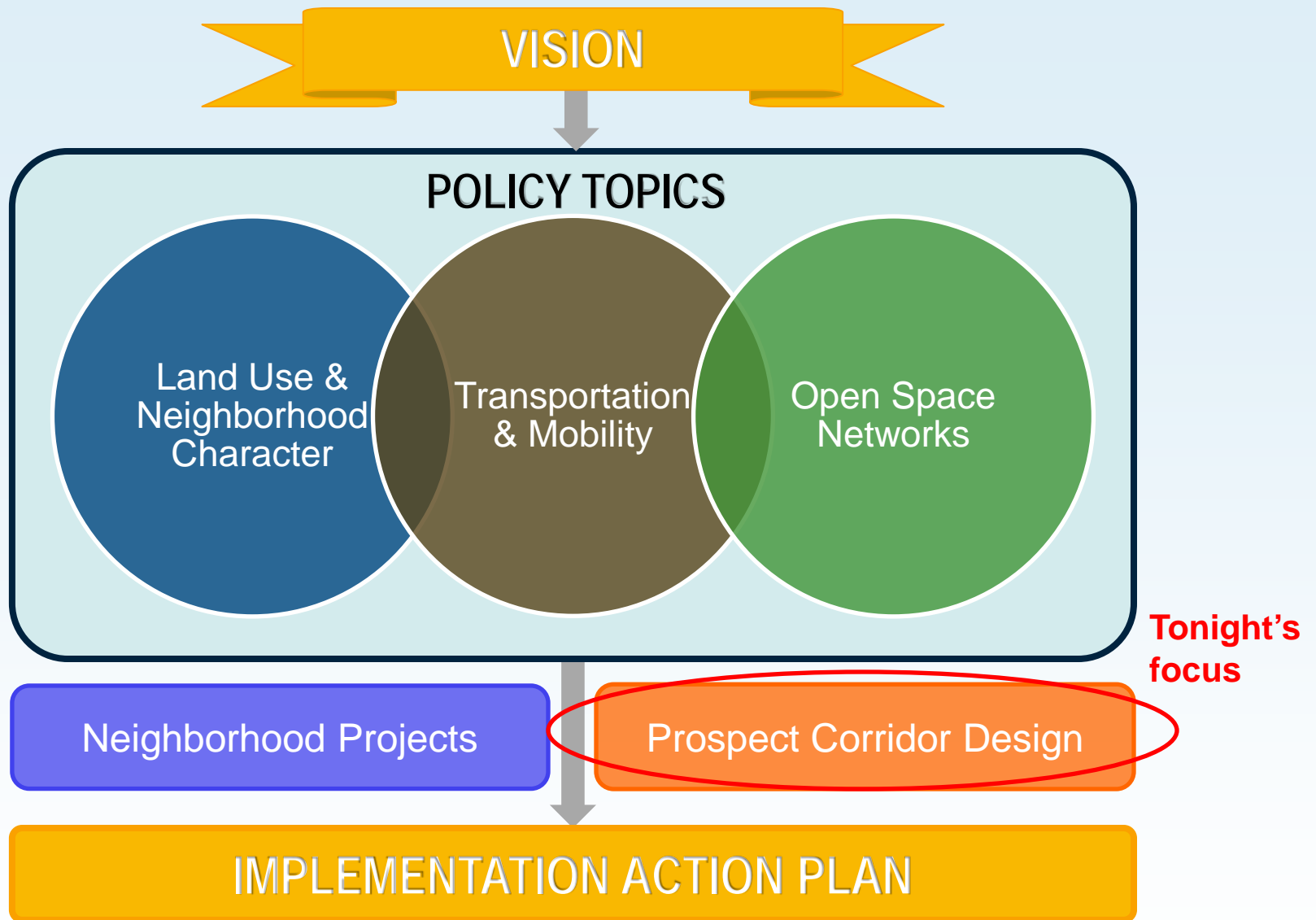
Tonight's Agenda

- Introductions
- Presentation
- Open House Design Review & Discussion
- Questionnaire

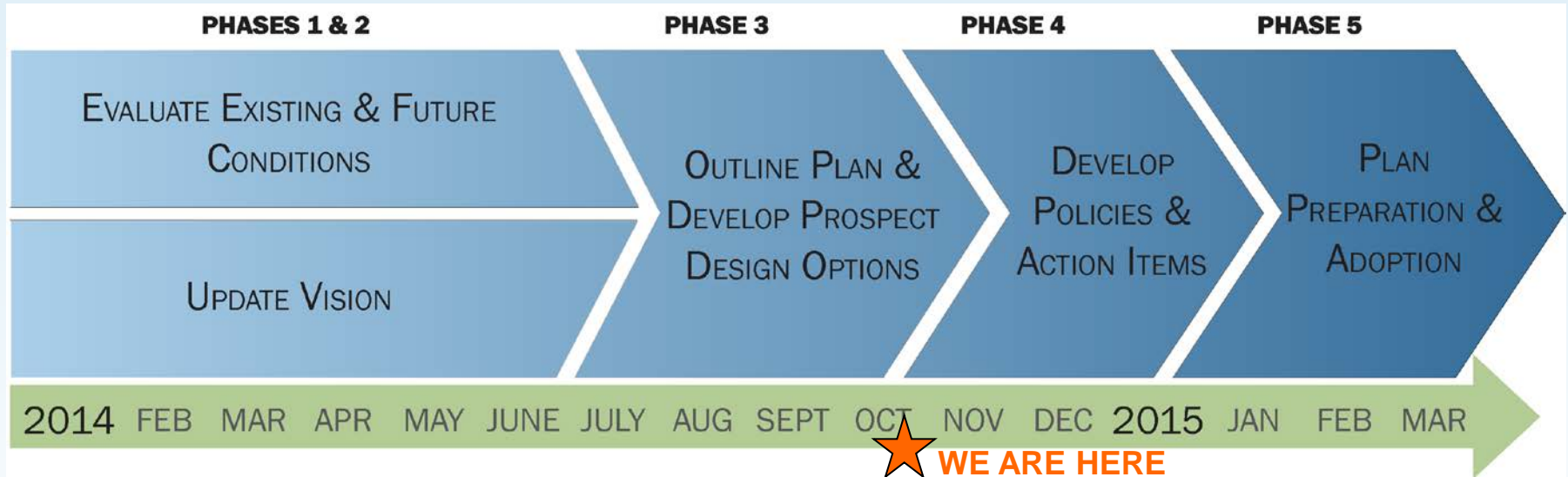
Project Overview

- Previous plan completed in 1999
- New growth & development
- Increasing CSU enrollment
- Potential on-campus stadium
- Impacts to neighborhood character





Process & Schedule



- Started in February
- ~12 month process
- Anticipated adoption in March 2015

Community Engagement To-Date

- 4 Listening Sessions
- 20 Walking & Bike Tours
- Online WikiMap
- 2 Visioning Workshops
- Online Visioning Survey
- Drake Road Farmers' Market
- CSU Lagoon Concert Series
- Gardens on Spring Creek Events
- Requested Sessions
- Open House
- Prospect Corridor Workshop



Prospect Road – Existing Conditions

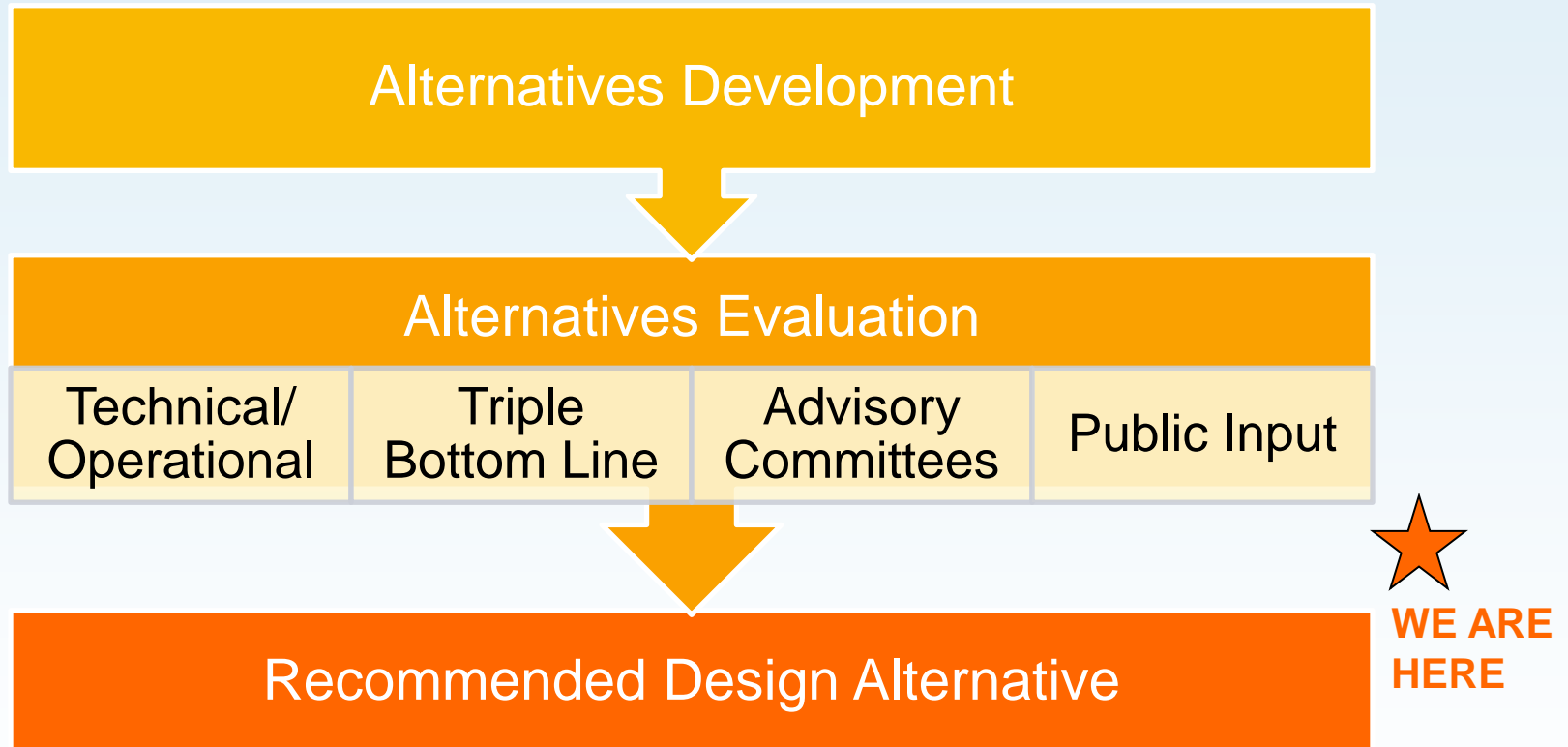


- 4 travel lanes, 21k – 29k vehicles per day, varying lane widths
- No bicycle facilities
- Mix of narrow (3') and wider (8'-10') sidewalks
- Poor access to transit, lack of amenities
- Little landscaping

Vision Statement – Prospect Corridor

- *Attractive and functional, well-integrated, mixed-use corridor that serves the mobility needs of nearby neighborhoods, CSU, and the community*
 - Safe and comfortable corridor for all modes
 - Safe crossings
 - Attractive gateway
 - Seamless connection to MAX

Prospect Corridor Alternatives - Process



Prospect Alternatives

Shields to Whitcomb

Whitcomb to Center

Center to College

Alternative A - Existing curb lines and roadway width maintained plus pedestrian enhancements - renovate and retrofit.

"All About Pedestrians"

- 4 travel lanes
- 6' detached sidewalk
- 8' tree lawn
- Planted median

- 4 travel lanes
- 6' detached sidewalk
- 8' tree lawn
- Planted median

- 4 travel lanes
- 6' detached sidewalk
- 8' tree lawn
- Planted medians



Alternative B - Replace one travel lane w/ buffered bike lane each on side plus pedestrian enhancements - minimize right-of-way (ROW) acquisition.

"Boulevard"

- 2 travel lanes
- 6' detached sidewalk
- 6' tree lawn
- Buffered bike lanes (5' lane, 2' buffer)
- Planted median

- 4 travel lanes
- 10' shared bike/ped path
- 6' tree lawn
- Planted median

- 4 travel lanes
- 10' shared bike/ped path (partial)
- 6' tree lawn
- Planted medians



Alternative C - Existing travel lanes maintained plus shared bike/ped path - minimize right-of-way (ROW) acquisition on south side of Prospect Road.

"Complete Street"

- 4 travel lanes
- 10' shared bike/ped path
- 6' tree lawn
- Roadway shifted North

- 4 travel lanes
- 10' shared bike/ped path
- 6' tree lawn
- Planted median

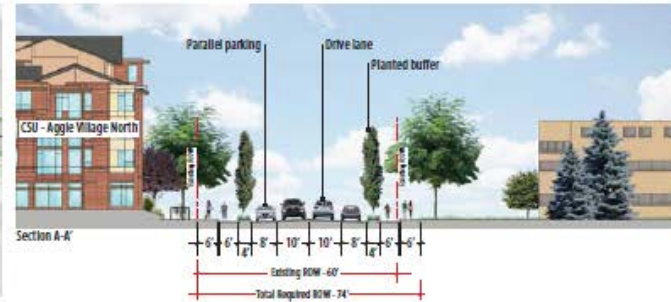
- 4 travel lanes
- 10' shared bike/ped path
- 6' tree lawn
- Planted medians



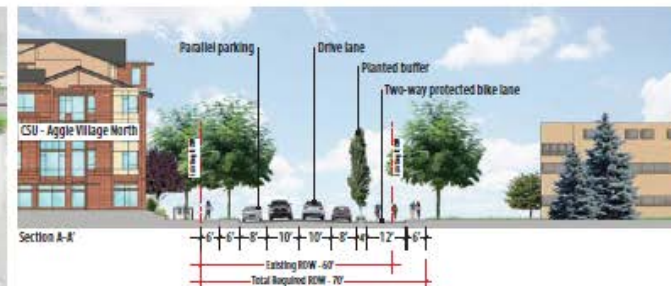
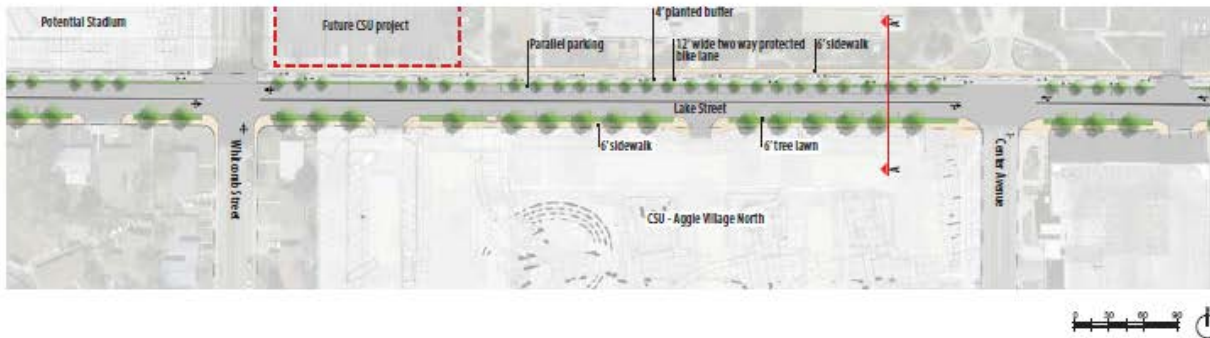
*Note: All travel lanes for Alternatives A, B, and C are 10-11' wide. Existing travel lanes on Prospect Road range from 8-13.5' wide.

Lake Alternatives

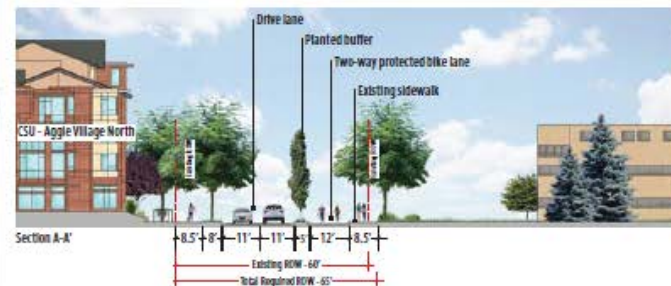
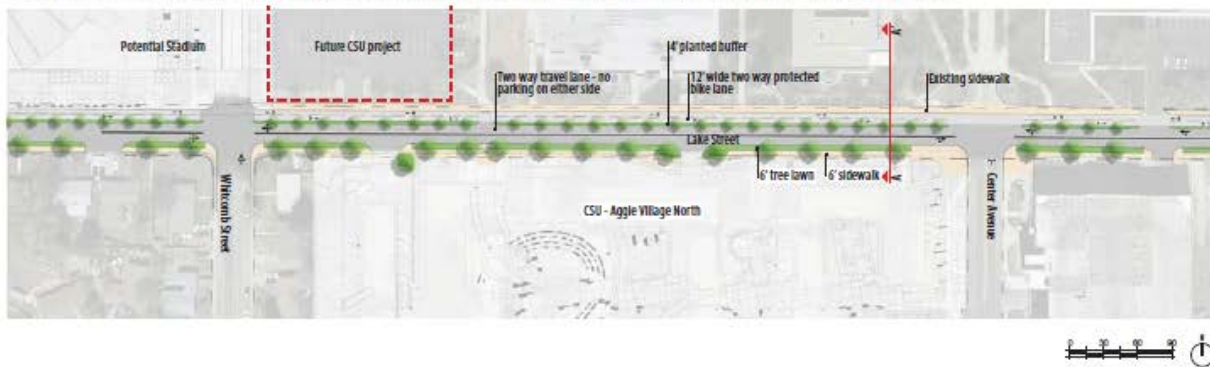
Lake Street Alternative A - Protected bike lane both sides, maintain on street parking, 2 travel lanes - Maintain existing curbs



Lake Street Alternative B - 2 way protected bike lane (north side only), on street parking, 2 travel lanes



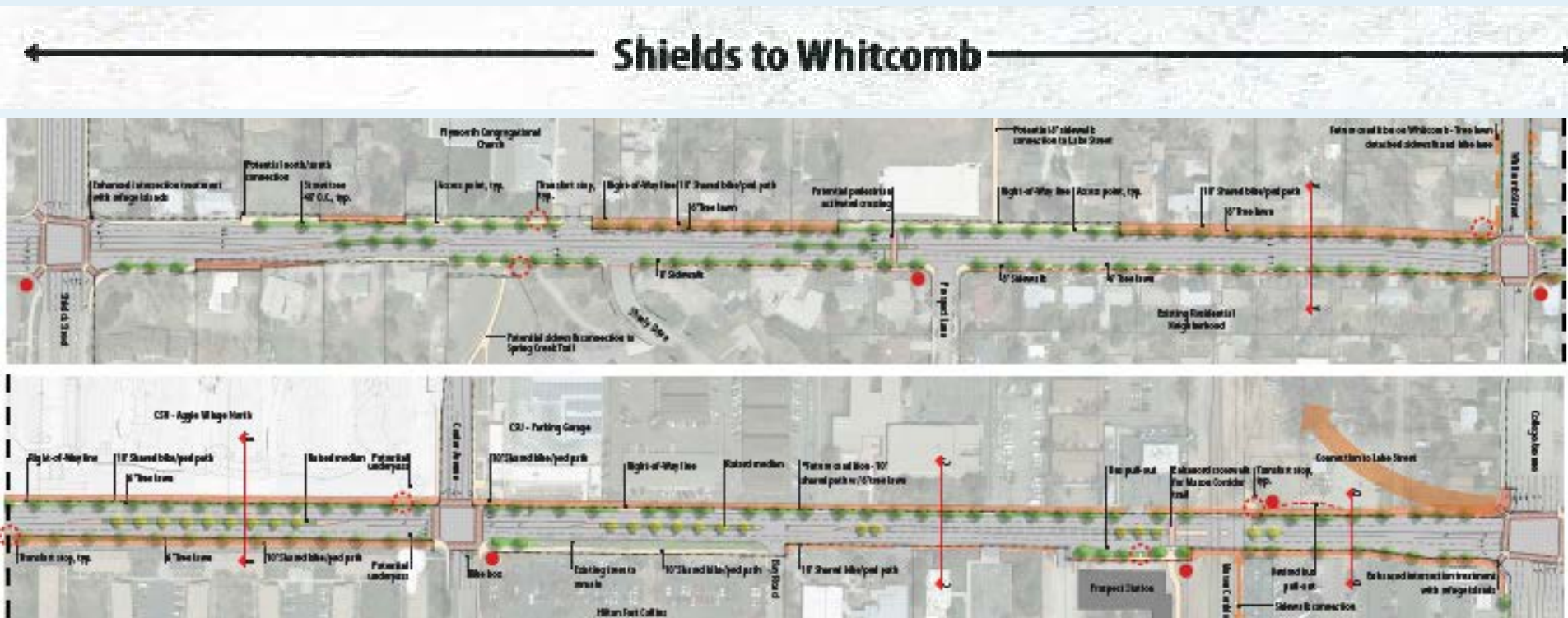
Lake Street Alternative C - 2 way protected bike lane (north side only), no parking, 2 travel lanes - Maintain ex. curbs



Alternatives Evaluation

- Technical
 - Motor Vehicle
 - Bicycle
 - Pedestrian
 - Transit
- Vision
- Public Input
 - Open House
 - Workshop
 - Online Survey
 - Stakeholders

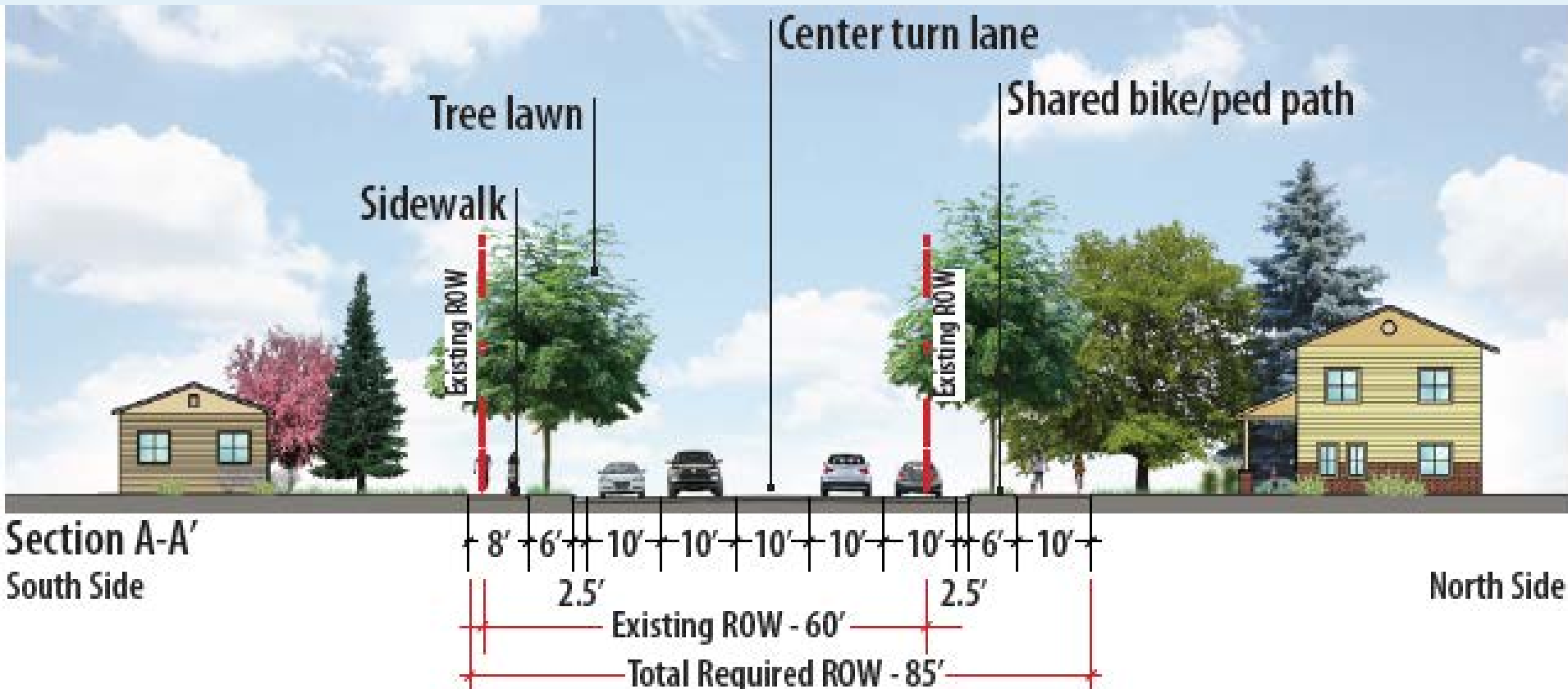
Prospect Draft Design



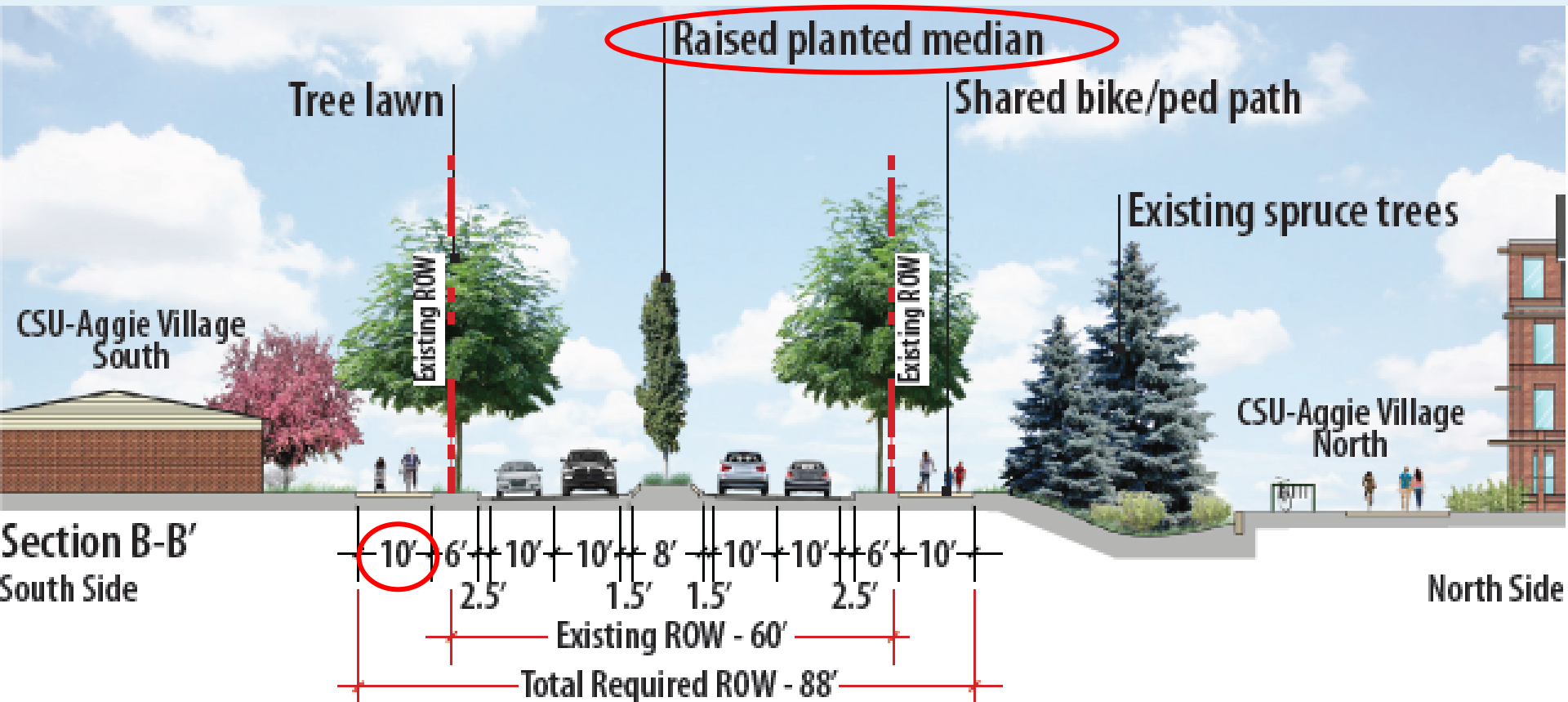
Whitcomb to Center

Center to College

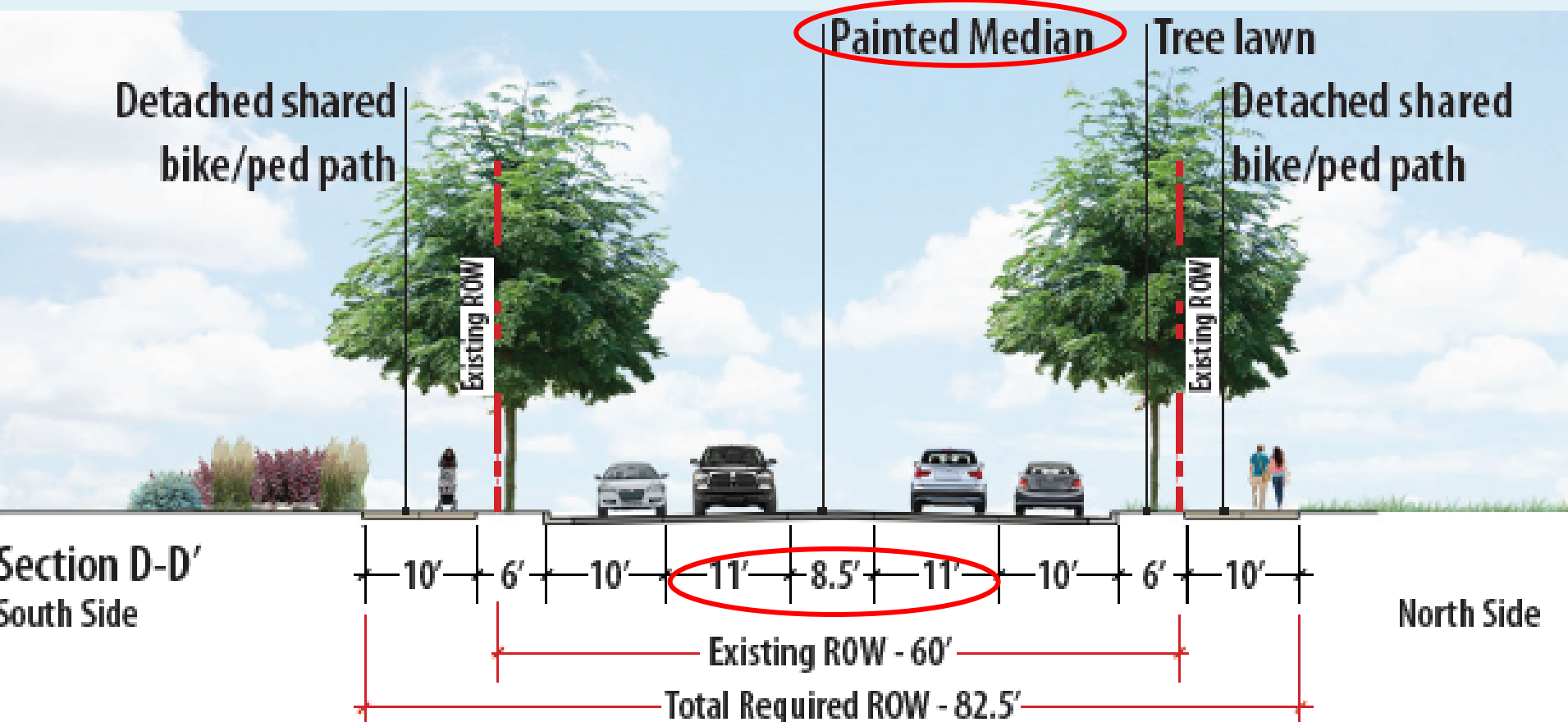
Prospect Draft Design – Shields to Whitcomb



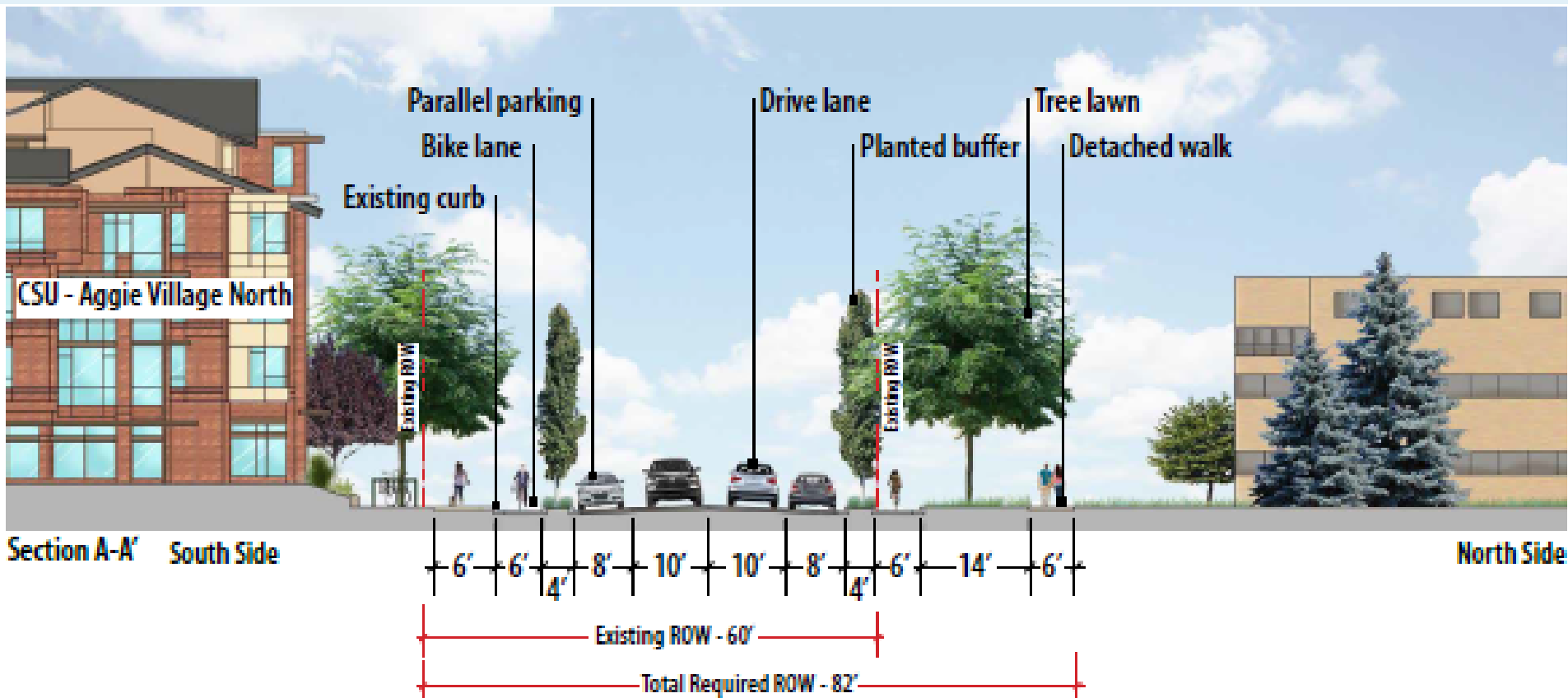
Prospect Draft Design – Whitcomb to Center



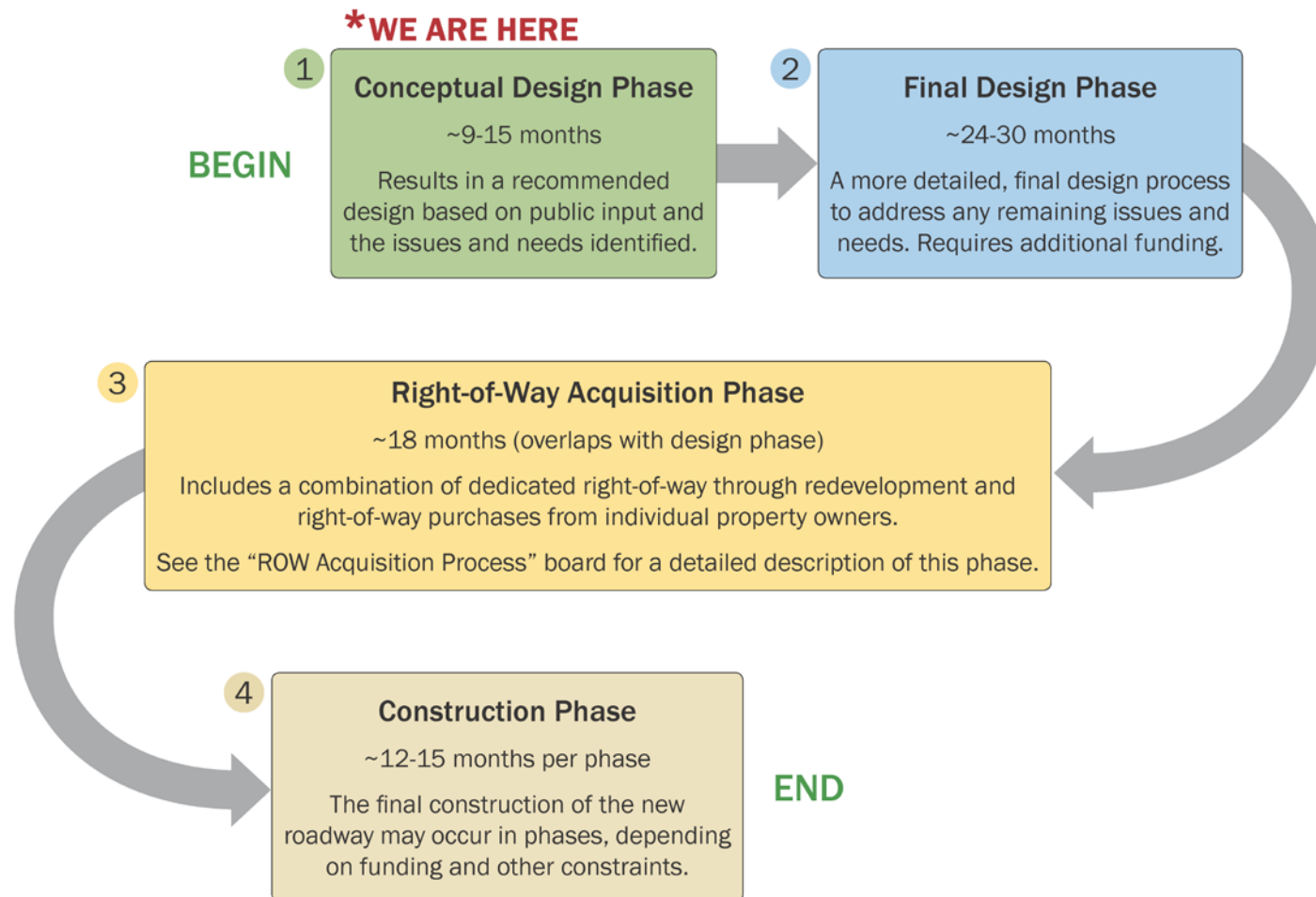
Prospect Draft Design – Center to College



Lake Draft Design – Shields to College



Overall Design/Construction Process



Right-of-Way (ROW) Acquisition Process

BEGIN



Note: If no agreement can be reached, the City may initiate court proceedings, if necessary.

END

Next Steps

- Develop Recommended Alternative
 - Make refinements based on your input
 - Follow up, as needed
- Stakeholder Committee – Nov 19
- City Council Work Session – Nov 25

Questions for You

What are your ideas or concerns about:

- Overall draft design
- Access
- Parking
- Right-of-Way (ROW)
- Other

Thank You!

- For more information, please see fcgov.com/westcentral

Please complete your questionnaire