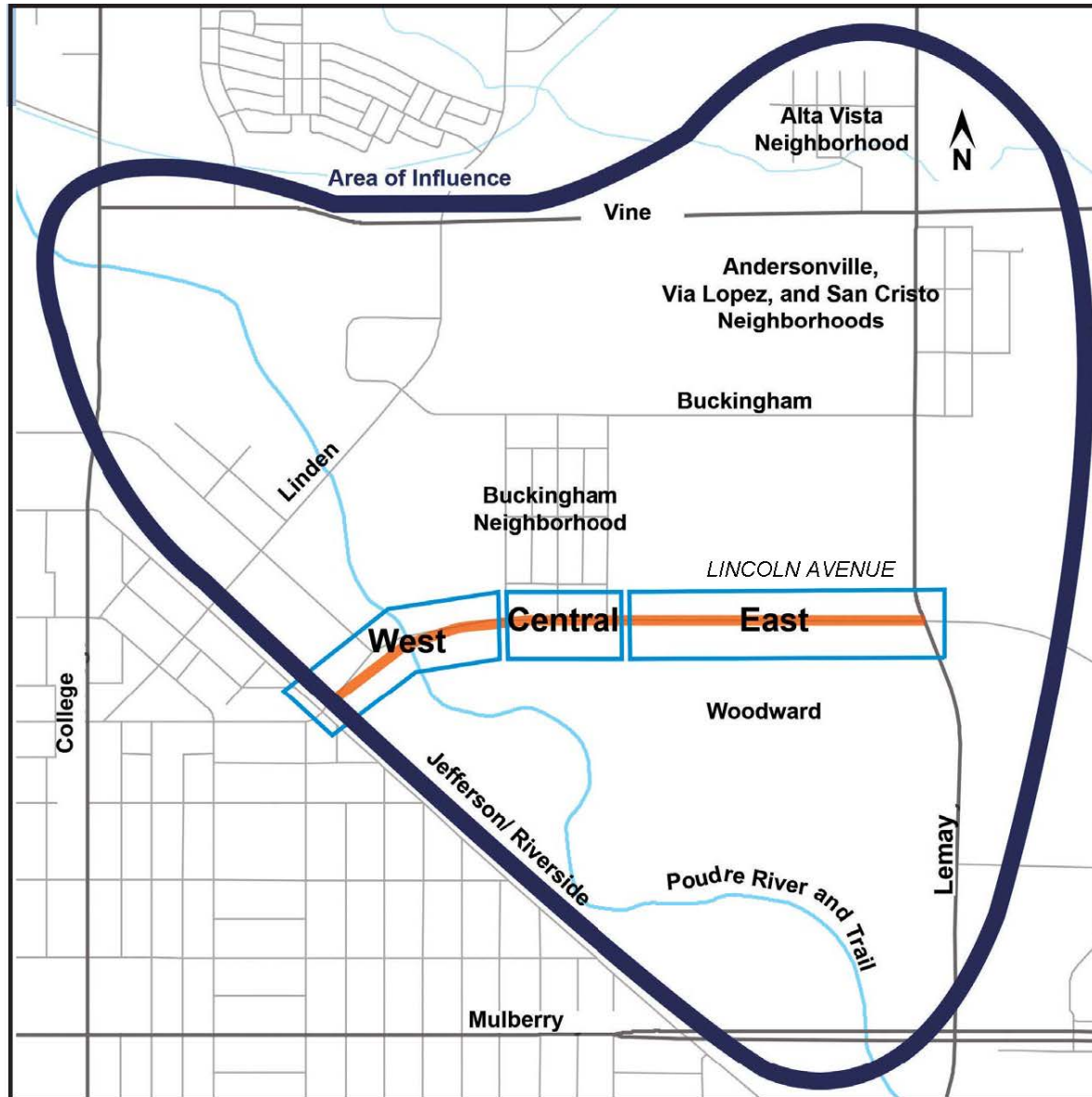
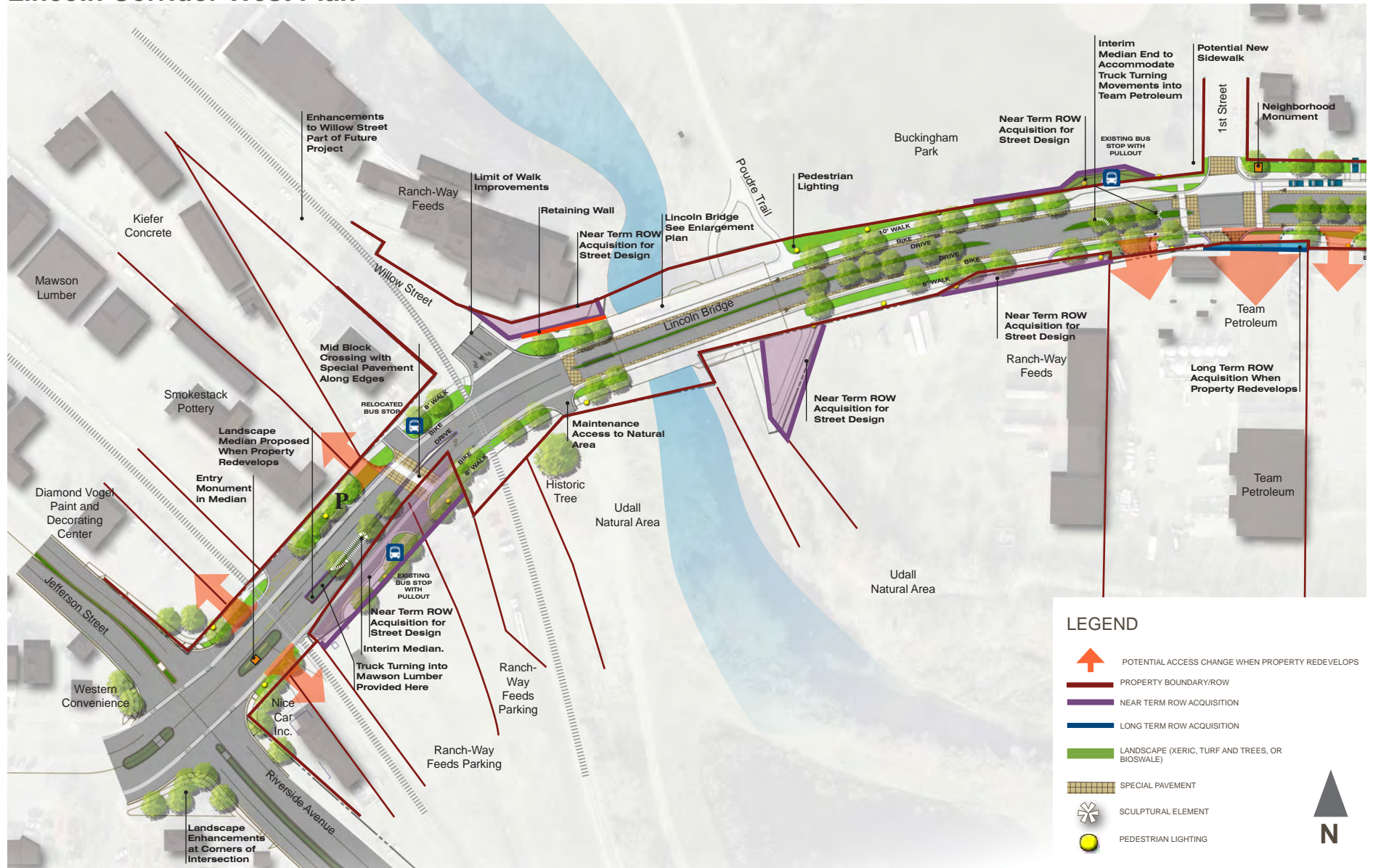


LINCOLN CORRIDOR DESIGN SEGMENTS



Lincoln Corridor West Plan



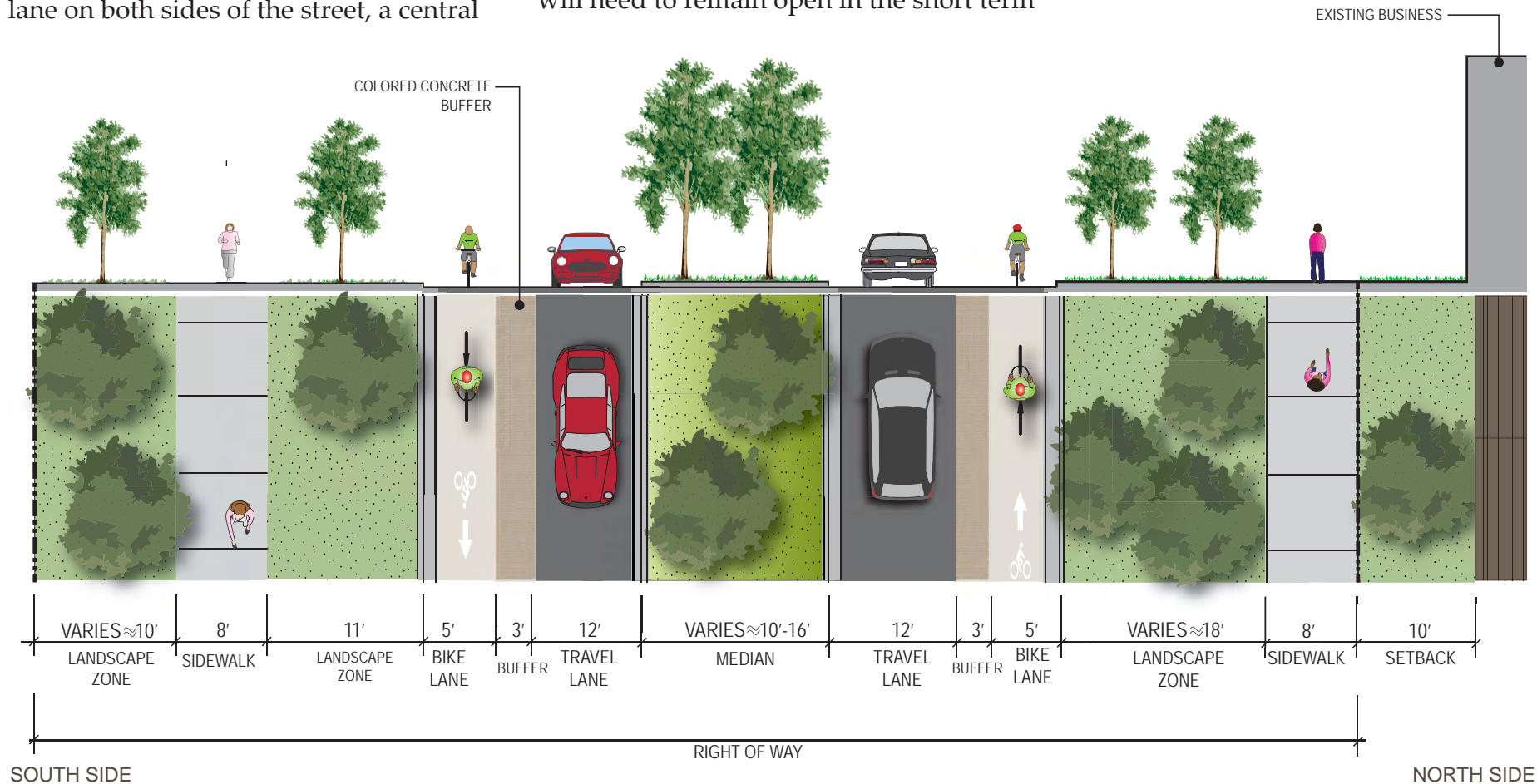
SECTION 3.2 PREFERRED ALTERNATIVE

Lincoln Corridor West

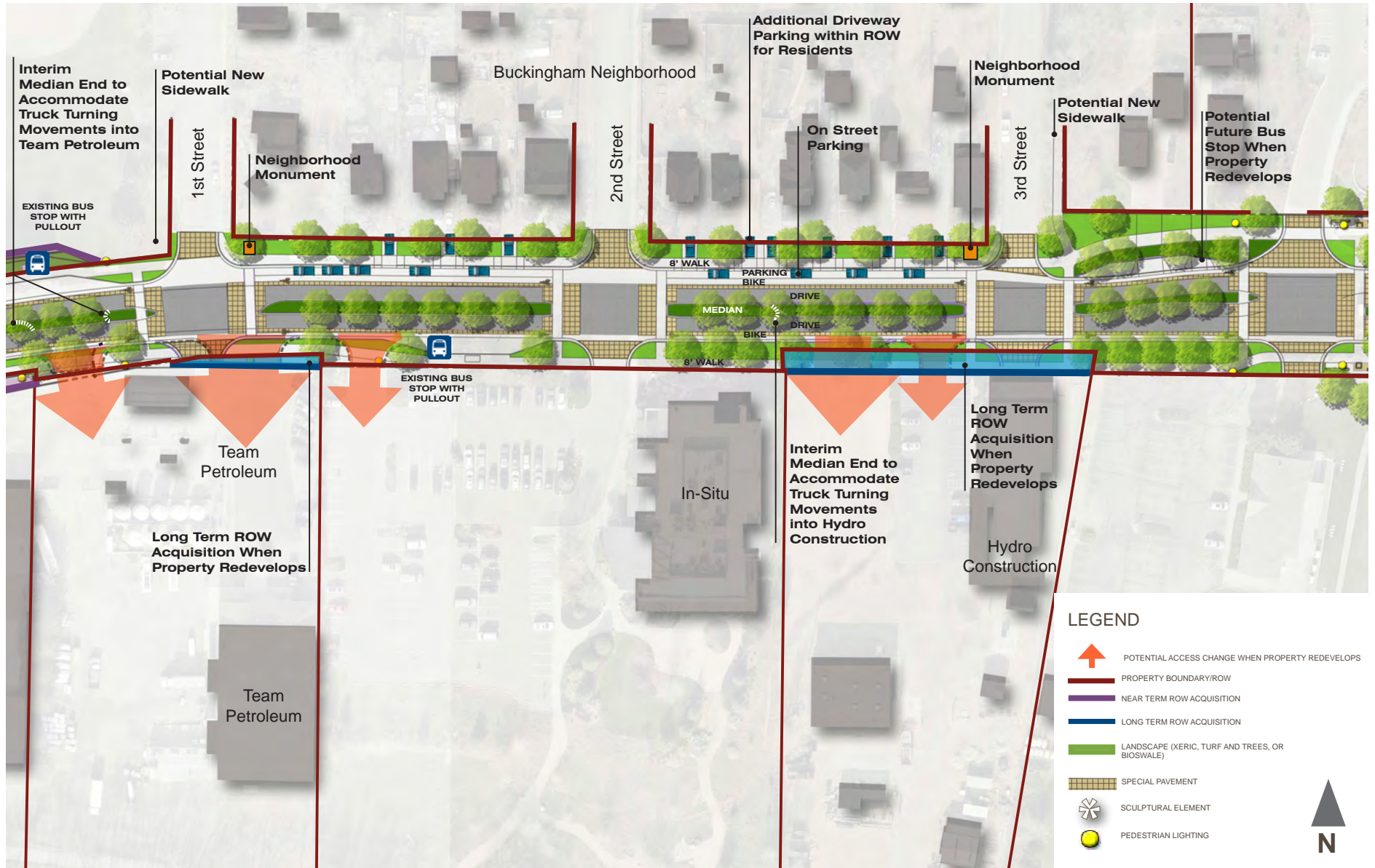
The west segment of the corridor extends from Jefferson/Riverside west to 1st Street. Although there is some variation in the street section throughout this segment, the street typically includes a single travel lane in each direction, a buffered bike lane on both sides of the street, a central

median, an 8' walk on the south side of the street, and an 8' walk on the north side. As there is great variation in the street ROW width along this segment, some ROW acquisition is necessary in order to create a unified street condition. There are also several access drives that will need to remain open in the short term

but that are envisioned to close if/when the property redevelops. The Lincoln Bridge will be enlarged and improved and is described in greater detail later in this section. The landscape treatment of medians and landscape zones is discussed later in this section as well.



Lincoln Corridor Central Plan

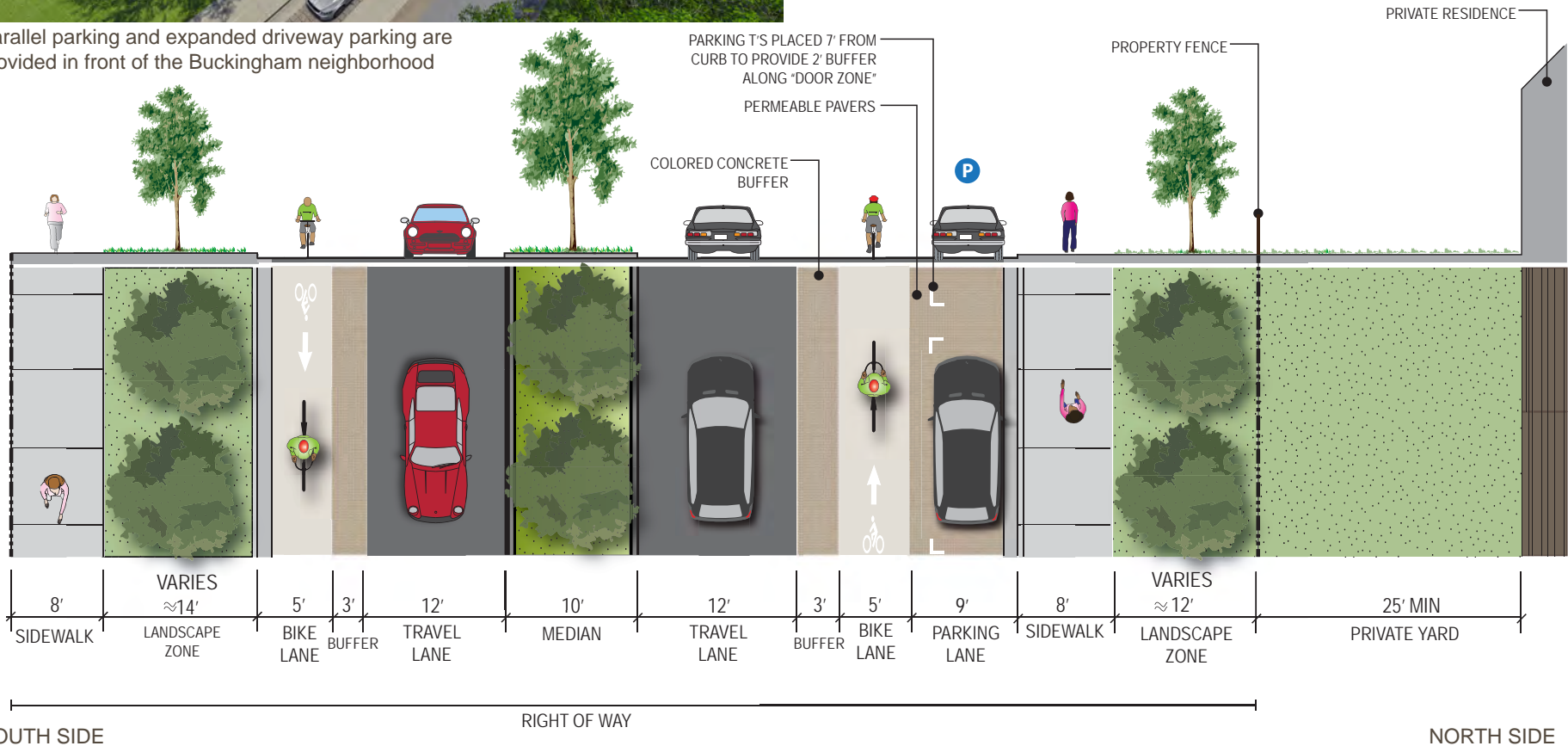




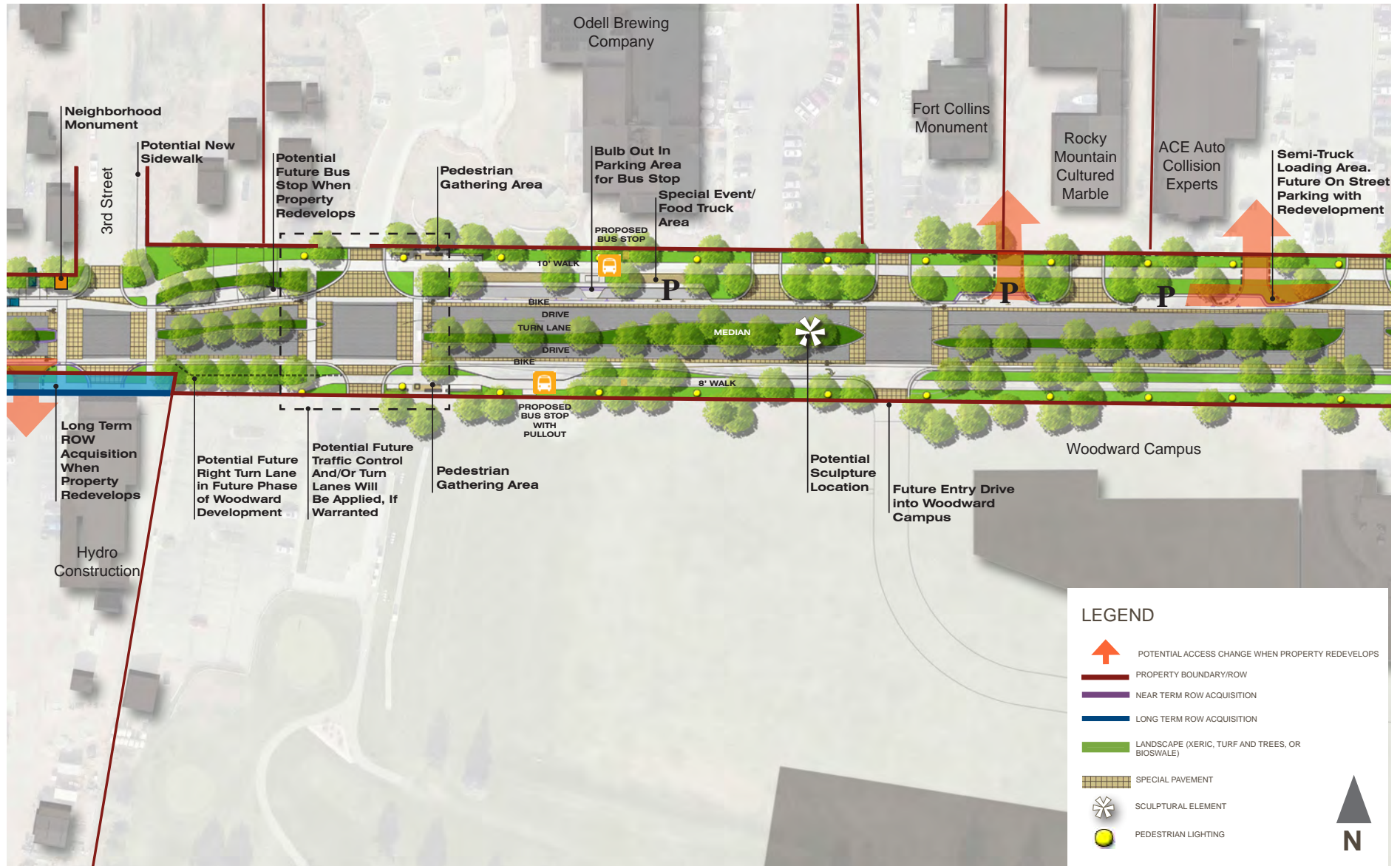
Lincoln Corridor Central

The central segment of the corridor extends from 1st Street to 3rd Street and includes the Buckingham neighborhood frontage. The street includes a single travel lane in each direction, a buffered bike lane on both sides of the street, a central median, an 8' walk on the south side of the street, an 8' walk on the north side, and a landscape buffer between the street and residences. Parallel parking is provided on the north side of the street to accommodate both residents and visitors.

Parallel parking and expanded driveway parking are provided in front of the Buckingham neighborhood



Lincoln Corridor East Plan - Part A

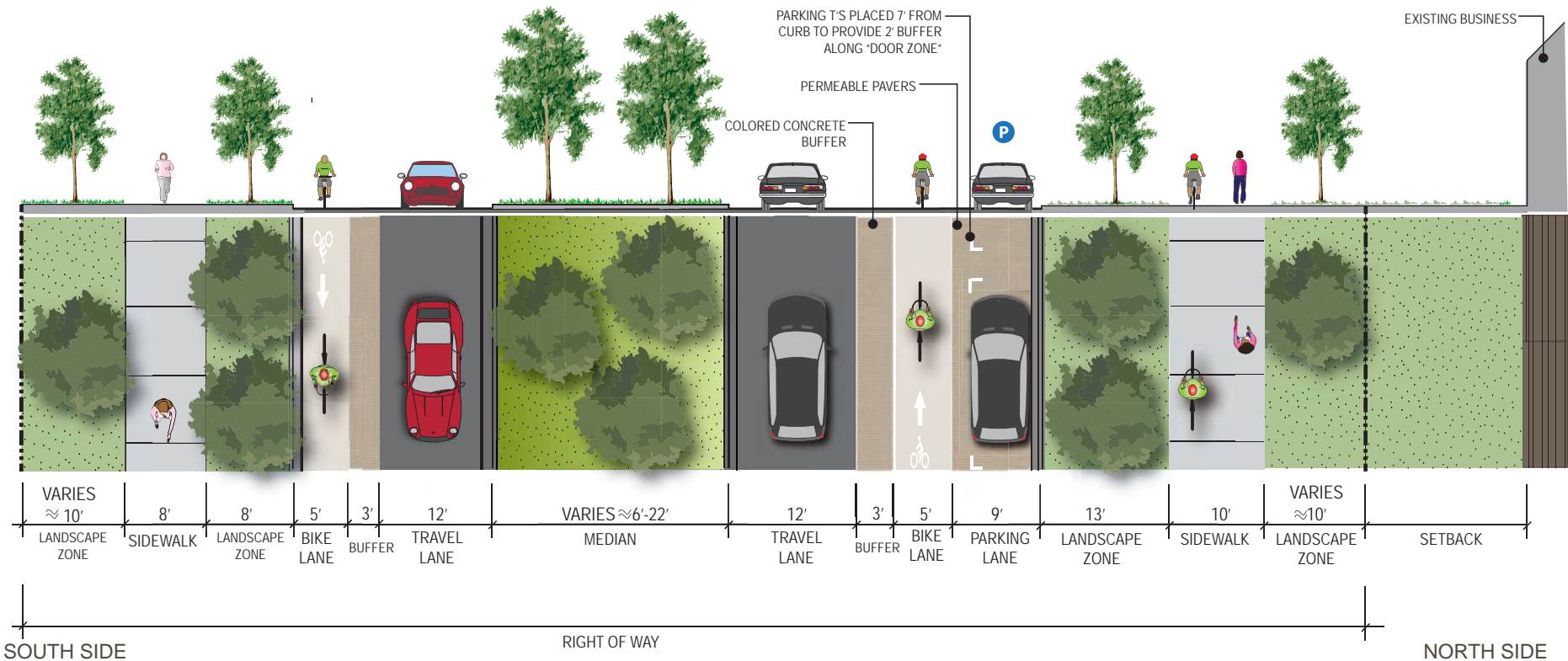




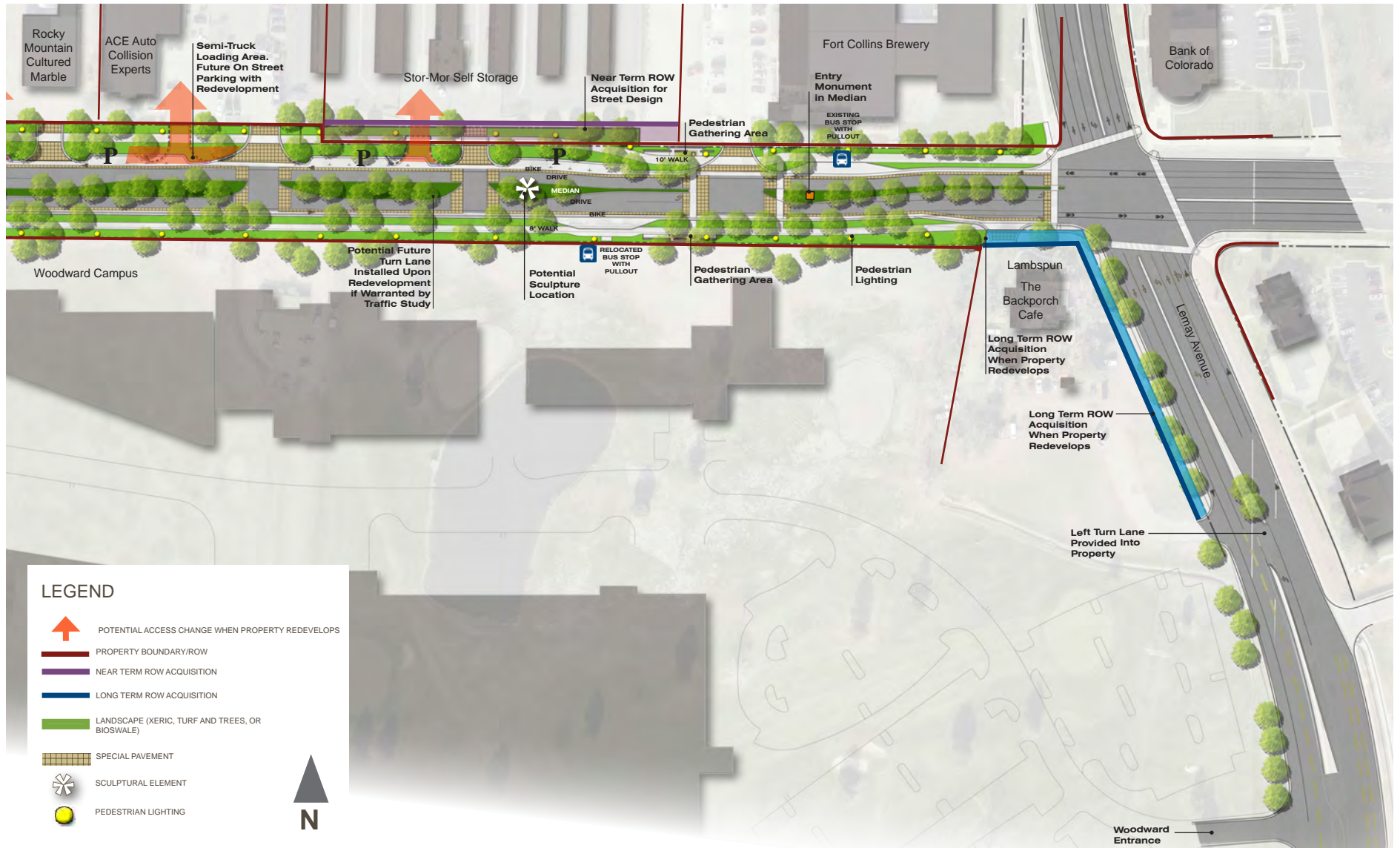
Special event staging areas provides a gathering space in front of the breweries along the north side of Lincoln

Lincoln Corridor East A

The east segment of the corridor extends from 3rd Street to Lemay. Due to its length, this segment is divided into two parts, A & B. The street includes a single travel lane in each direction, a buffered bike lane on both sides of the street, a central median, an 8' walk on the south side of the street, and a 10' walk on the north side. A special event staging area is provided in front of Odell Brewery, including on-street parking for food trucks and a shaded seating area.



Lincoln Corridor East Plan - Part B



Lincoln Corridor East B

Like Part A, Part B includes a single travel lane in each direction, a buffered bike lane on both sides of the street, a central median, an 8' walk on the south side of the street, and a 10' walk on the north side. Some parallel parking is provided on the north side of the street, which will

help calm traffic, create an active edge to the street, and provide convenient parking for brewery and business guests. The wide ROW in this area allows for a generous landscaped median, a feature that received strong support during the community input process. In addition to landscape enhancements, this broad median provides an excellent location

for sculpture. Concepts for sculpture are described in more detail later in this section. The northern edge of the Woodward campus is proposed to include heavy plantings of trees to create a park-like edge, as well as to create a screen and buffer on the edge of the property.

