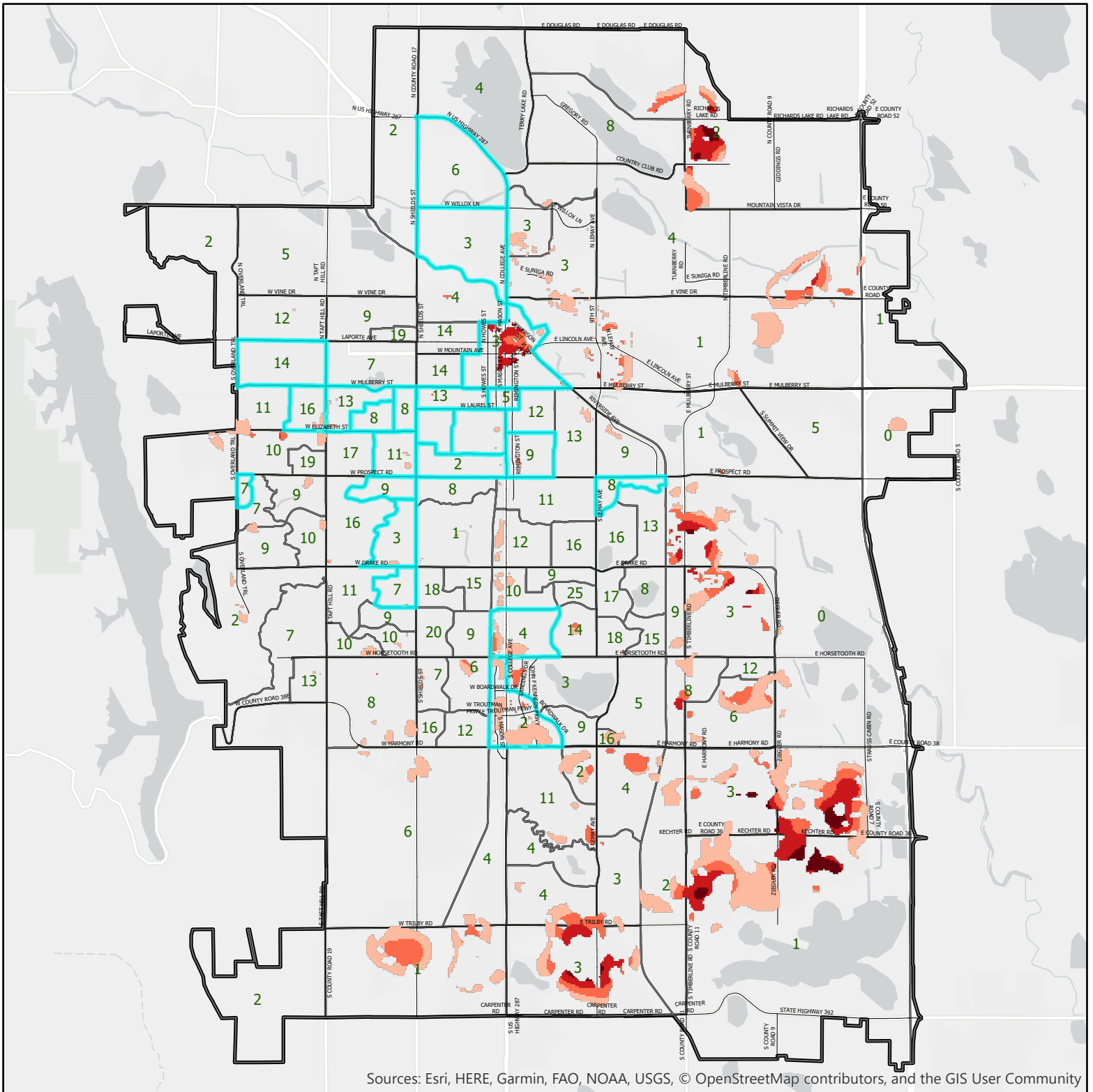


Tree Density and Vulnerable Areas

Based on Income and Heat



The highest Kernel Density Estimates of untreatable Ash and other street trees in dead / poor condition are displayed in dark red, with the lower density estimates appearing in light orange. These estimates are displayed for areas where average 2016 summer temperatures exceeded 95 degrees F.

Census block groups with a median household income of less than \$40,000 are highlighted in blue. The average percentage of residential tree cover is overlaid on each block group in green.