



**Planning, Development and
Transportation**
Current Planning
281 North College Ave.
P.O. Box 580
Fort Collins, CO 80522-0580
970.221.6750
970.224.6134 - fax
fcgov.com/developmentreview

August 5, 2013

Dear Resident or Property Owner:

On Monday, August 19, 2013 from 5:30 p.m. - 7:30 p.m. at the City of Fort Collins Streets Facility Training Room at 625 Ninth Street, the City of Fort Collins Planning Department will facilitate a neighborhood meeting to discuss a proposed Interpretive Center building for the Museo de las Tres Colonias.

The Interpretive Center would be built at Romero Park, just south of the Museo. The Interpretive Center would be two stories and approximately 2,000 square feet, providing activity, meeting and office space for the abutting Museo as well as space for cultural exhibits. Conceptual drawings of the proposal can be found on-line at: <http://www.fcgov.com/developmentreview/agendas.php>

This neighborhood meeting is an opportunity to ask questions and provide feedback to the Museo. If you are unable to attend the neighborhood meeting, but would like to provide input, written comments are welcome by mail to the address above, or you may e-mail them to me directly at clevingston@fcgov.com. Meeting notes are available after the meeting online at: <http://www.fcgov.com/developmentreview/agendas.php>

The notification mailing list for this neighborhood meeting is from Larimer County Assessor records. Because of the lag time between home occupancy and record keeping, or because of rental situations, a few affected property owners may have been missed. Please feel free to notify your neighbor of this meeting so all may have the opportunity to attend.

Sincerely,

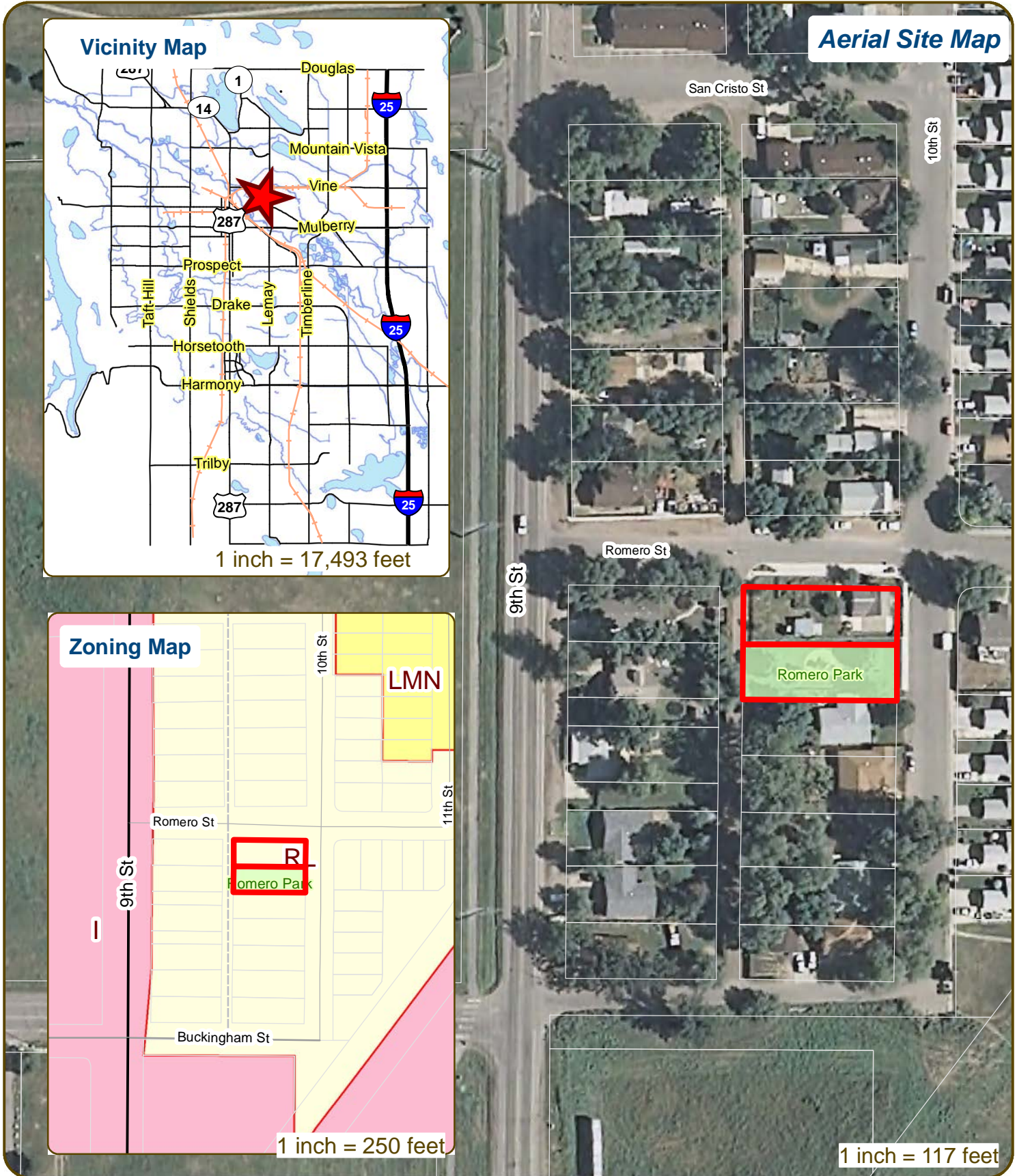
A handwritten signature in blue ink that reads "Courtney Levingston". The signature is written in a cursive, flowing style.

Courtney Levingston, AICP, LEED AP

City Planner

The City of Fort Collins will make reasonable accommodations for access to City services, programs, and activities and will make special communication arrangements. Please call 970-221-6750 for assistance.

425 10th Street Museo de las Tres Colonias Interpretive Center



These map products and all underlying data are developed for use by the City of Fort Collins for its internal purposes only, and were not designed or intended for general use by members of the public. The City makes no representation or warranty as to its accuracy, timeliness, or completeness, and in particular, its accuracy in labeling or displaying dimensions, contours, property boundaries, or placement of location of any map features thereon. THE CITY OF FORT COLLINS MAKES NO WARRANTY OF MERCHANTABILITY OR WARRANTY FOR FITNESS OF USE FOR PARTICULAR PURPOSE, EXPRESSED OR IMPLIED, WITH RESPECT TO THESE MAP PRODUCTS OR THE UNDERLYING DATA. Any users of these map products, map applications, or data, accepts same AS IS, WITH ALL FAULTS, and assumes all responsibility of the use thereof, and further covenants and agrees to hold the City harmless from and against all damage, loss, or liability arising from any use of this map product, in consideration of the City's having made this information available. Independent verification of all data contained herein should be obtained by any users of these products, or underlying data. The City disclaims, and shall not be held liable for any and all damage, loss, or liability, whether direct, indirect, or consequential, which arises or may arise from these map products or the use thereof by any person or entity.



ROMERO STREET

(4) ON-STREET

135' Walk

ROMERO HOUSE

(425 10TH)

SHED

(5) PARKING
(possible)

(5) PARKING

Porch

Proposed
Interpretive Cntr

Walk
BATHYARD PARKING - NO (3)

LEERS AT 10TH STREET

20' ALLEY

50'

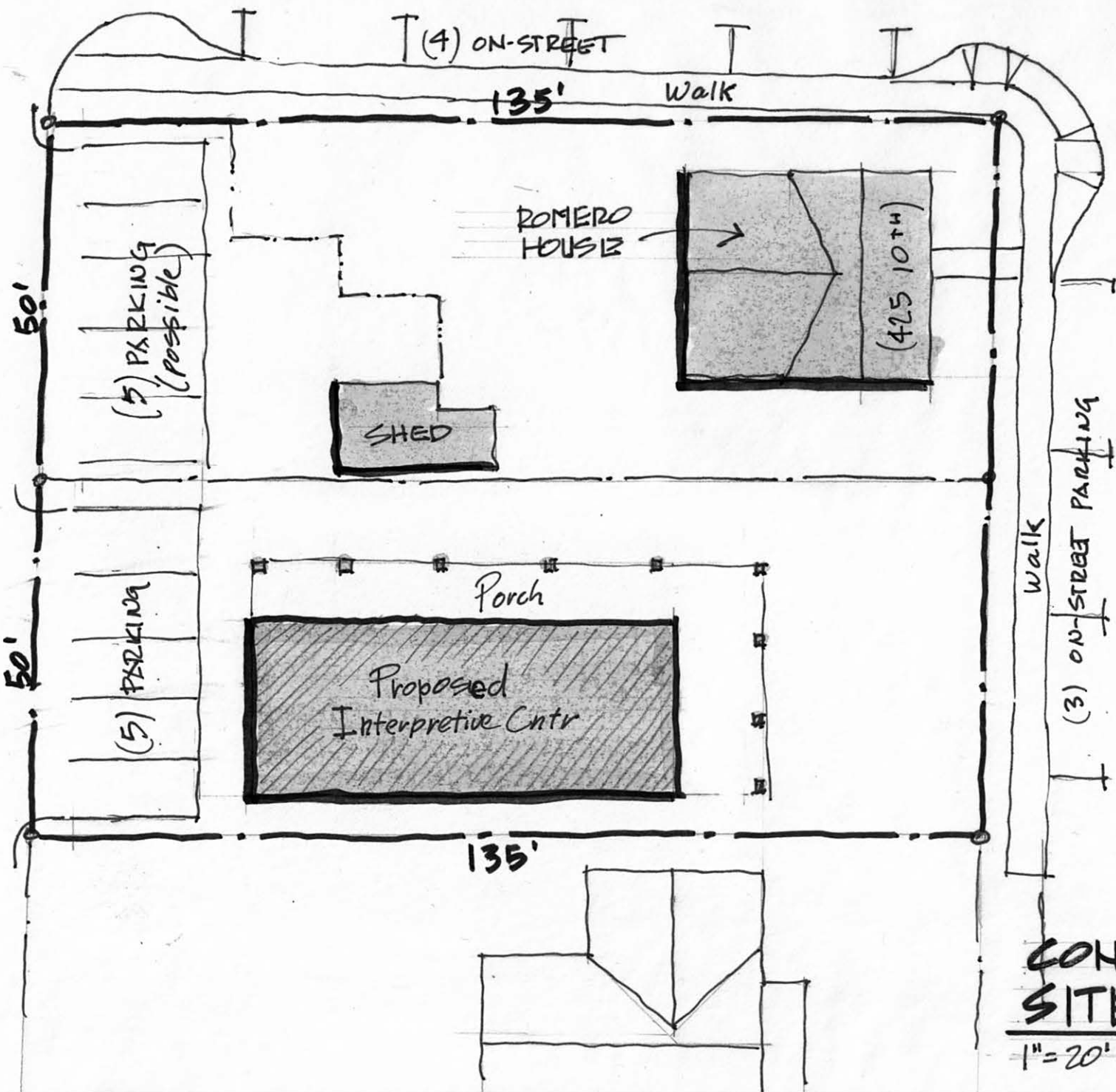
50'

135'

CONCEPT
SITE PLAN

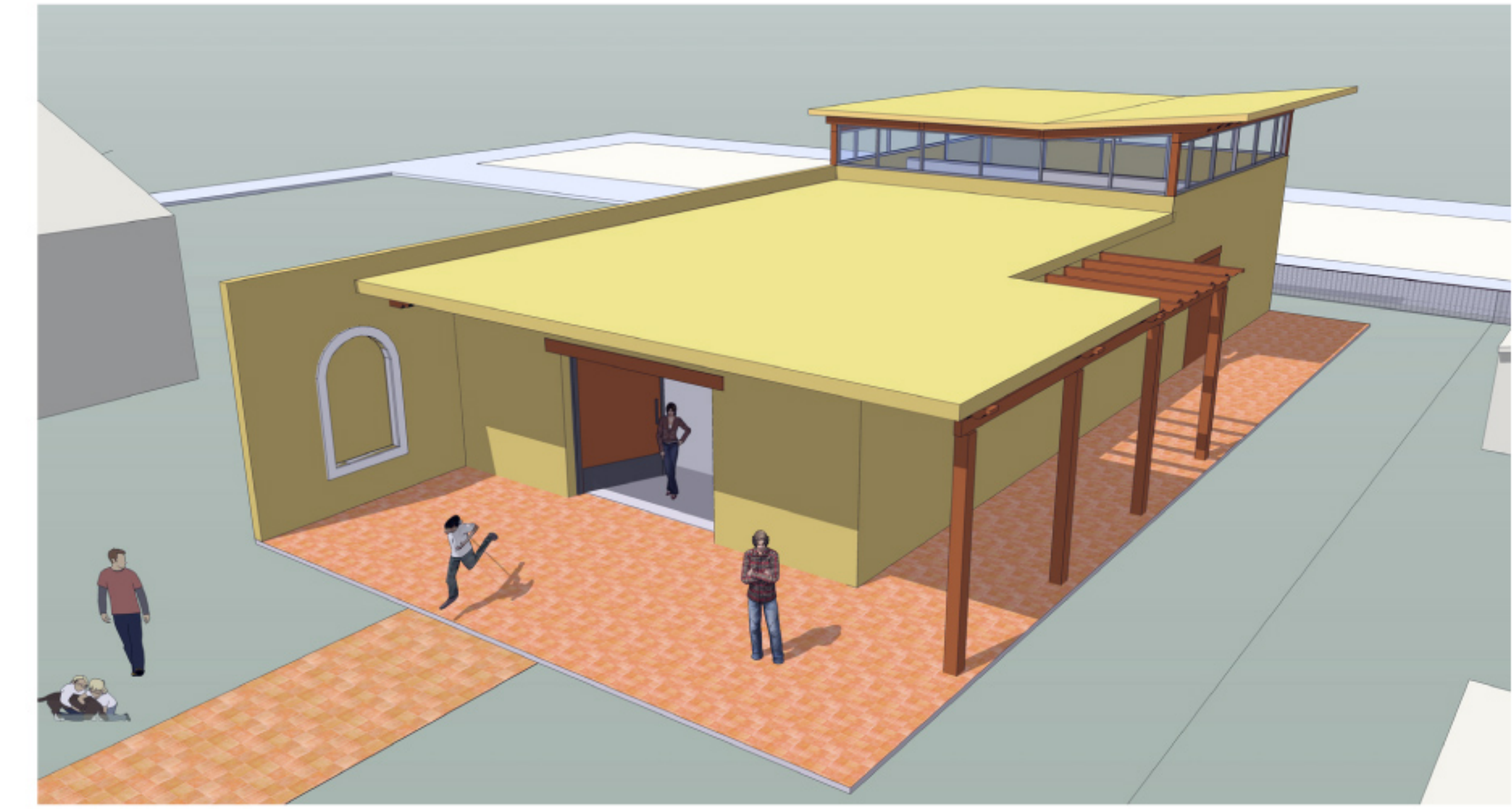
1" = 20'

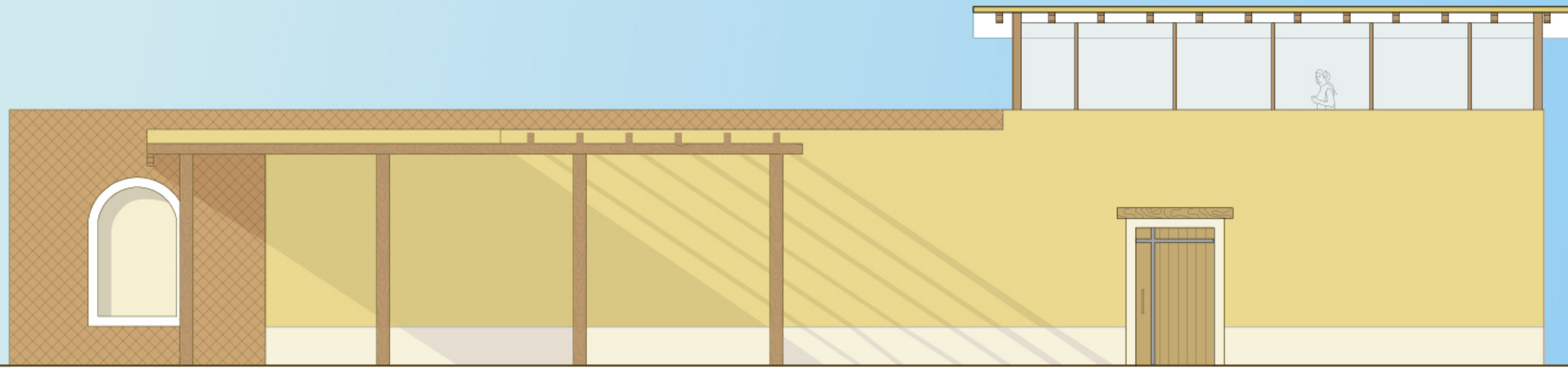
3.25.13





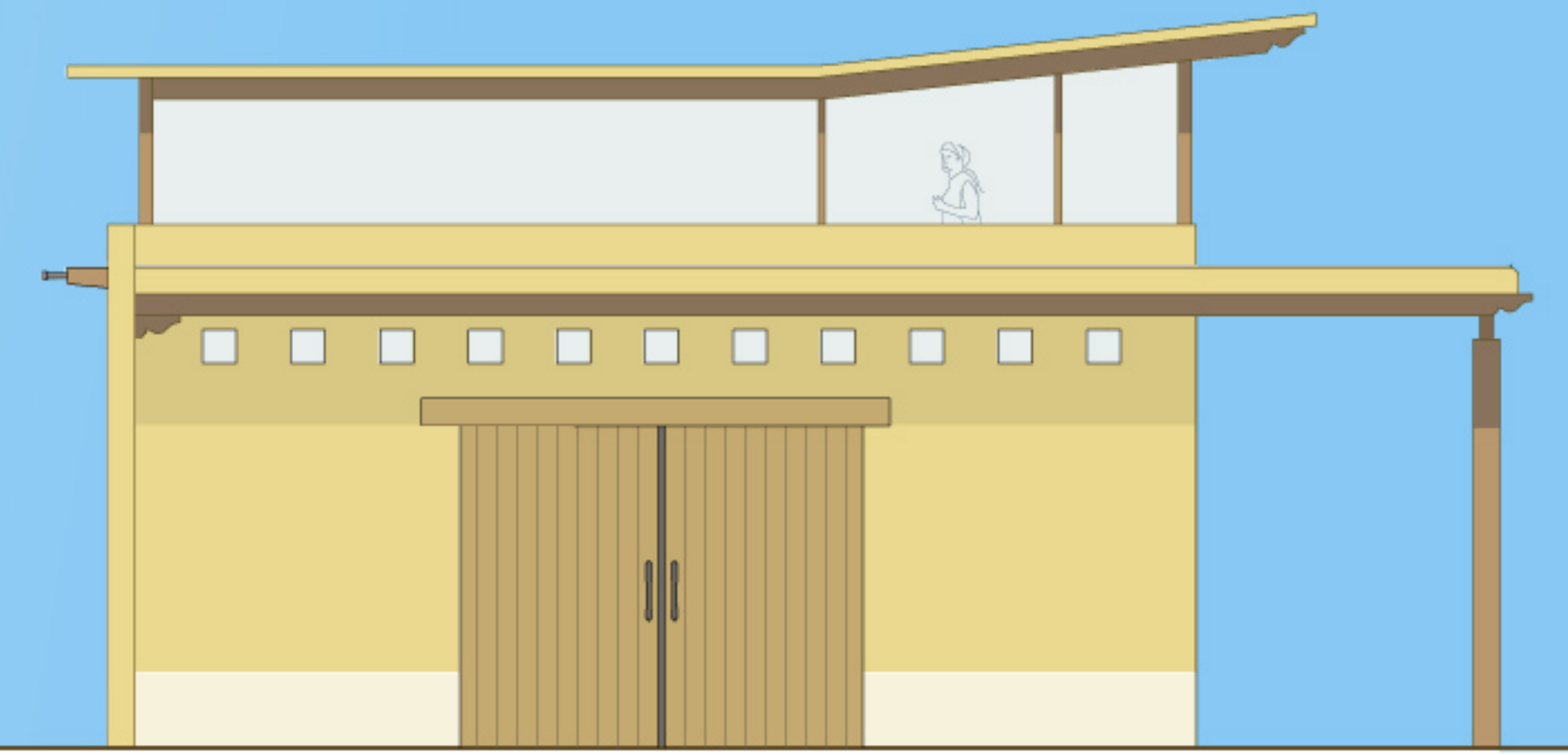
FACING WEST





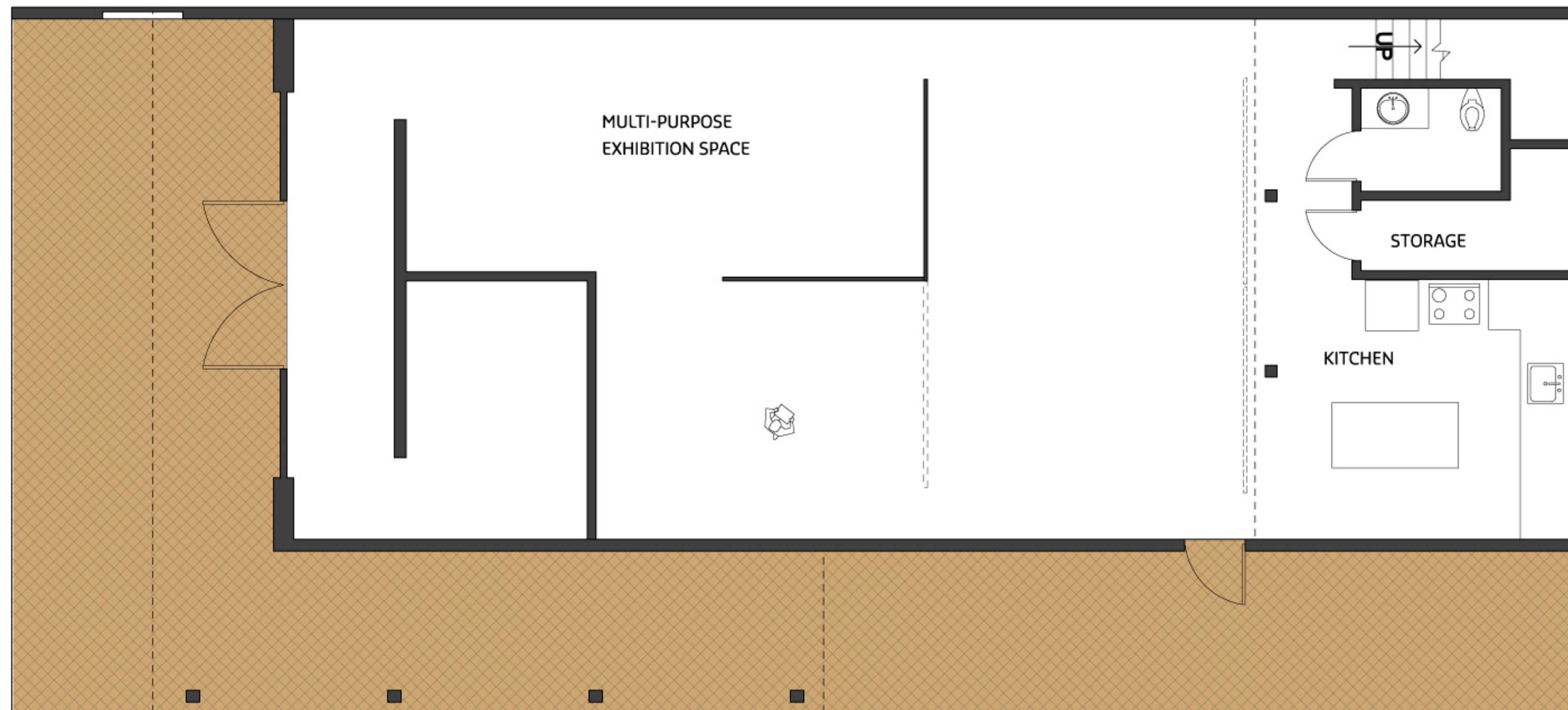
SOUTH ELEVATION

SCALE : 1/4" = 1'



WEST ELEVATION

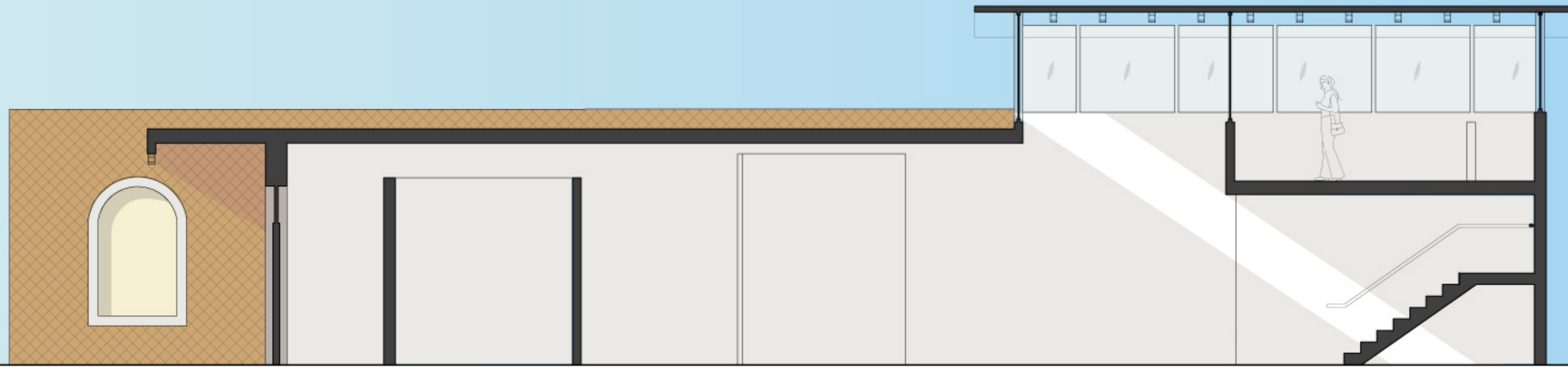
SCALE : 1/4" = 1'



FLOOR 1 PLAN

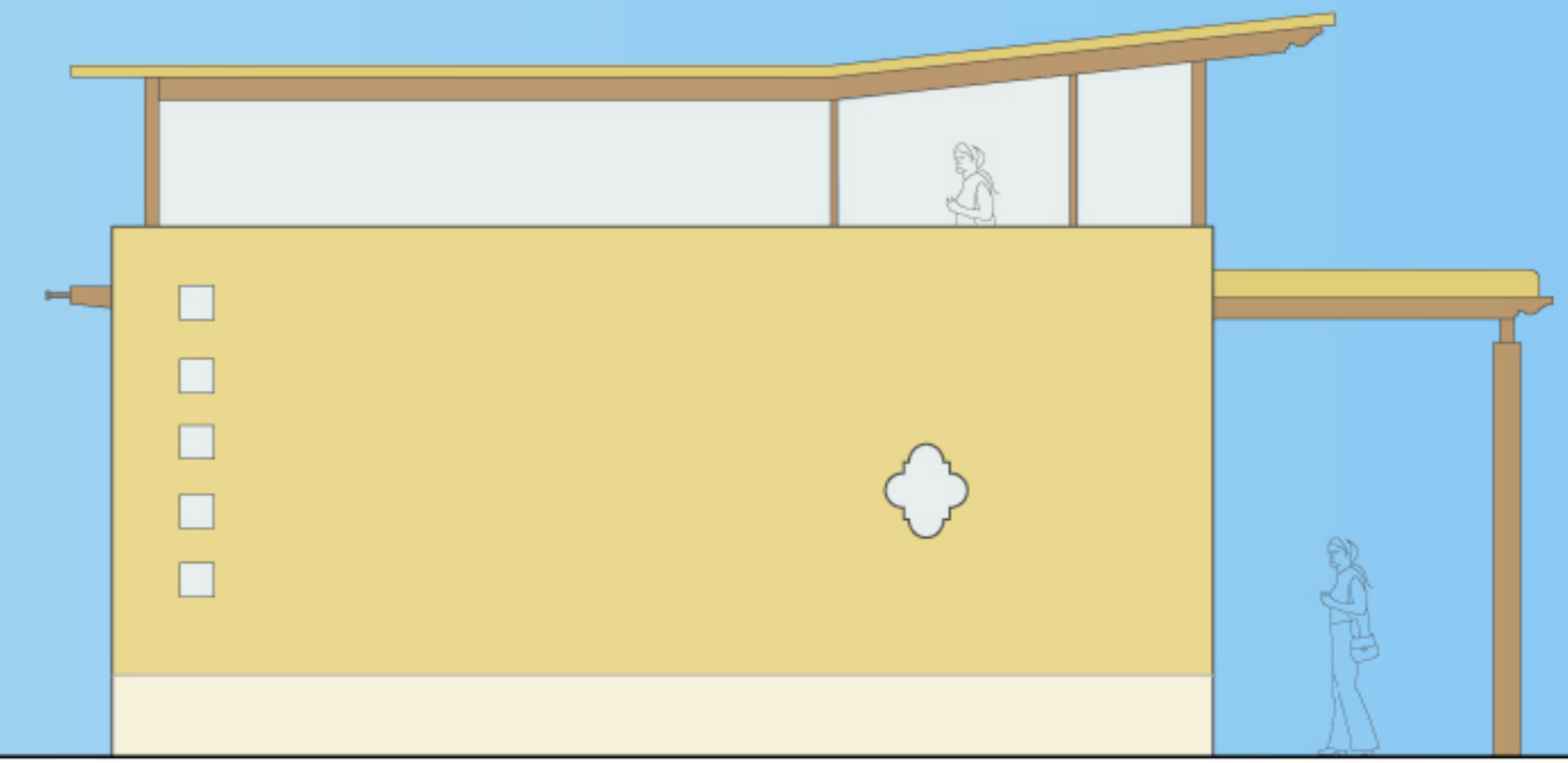
SCALE : 1/4" = 1'





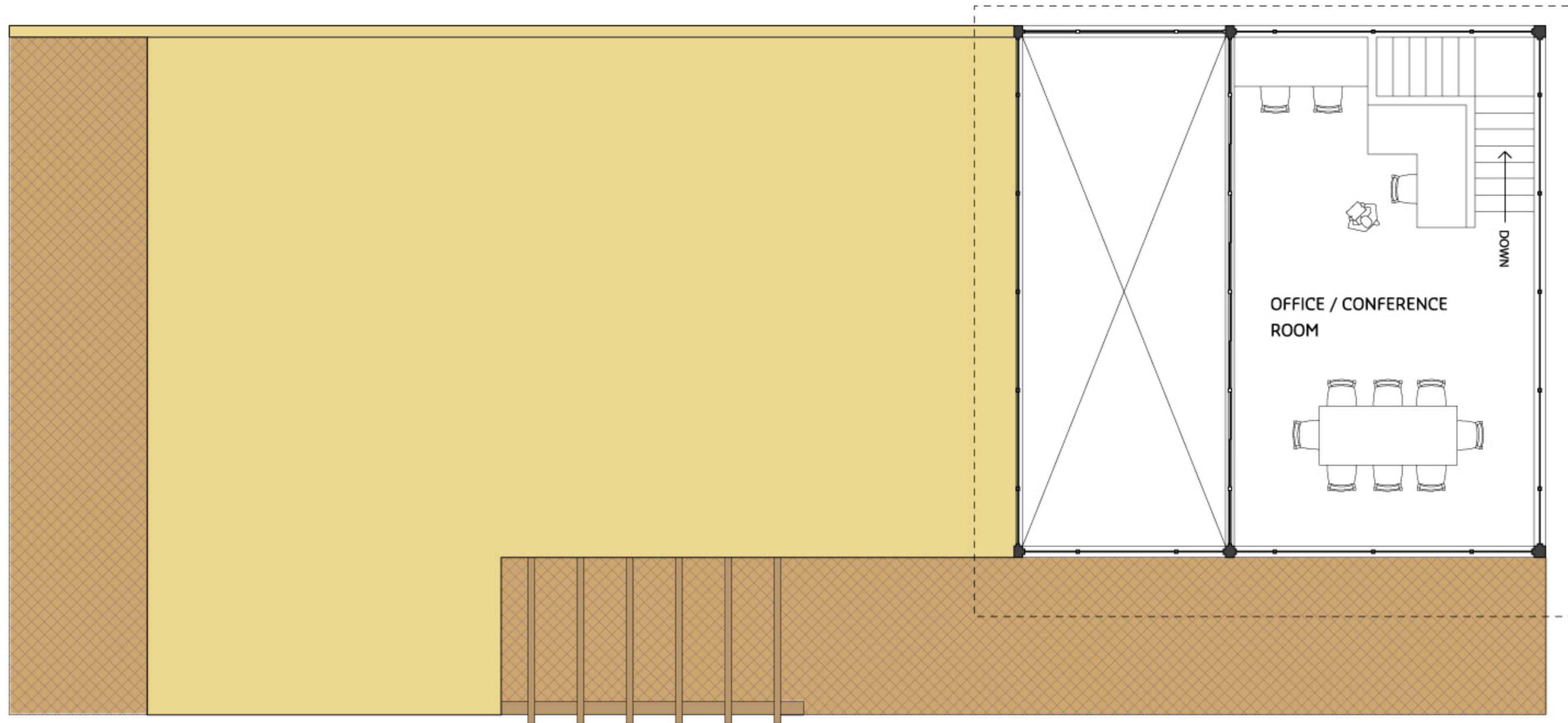
SOUTH ELEVATION SECTION

SCALE : 1/4" = 1'



EAST ELEVATION

SCALE : 1/4" = 1'



FLOOR 2 PLAN

SCALE : 1/4" = 1'