

SLATERPAULL  
ARCHITECTS

1515 ARAPAHOE ST. # 400 TOWER ONE  
DENVER CO. 80202 - ph. 303.607.0977  
WWW.SLATERPAULL.COM

CONSULTANT:

NOT FOR CONSTRUCTION

PROJECT:  
**Global Village  
Academy - Fort Collins**

East Alameda Drive  
Aurora, CO 80017

OWNER:  
**Global Village  
International Schools**

403 S. Airport Blvd. - # A  
Aurora, CO 80017

ISSUE:


DRAWING INFORMATION:

PROJECT NO:	11042.000
CAD DWG FILE:	
DRAWN BY:	Author
CHECKED BY:	Checker
APPROVED BY:	Approver

SHEET TITLE:  
**ARCHITECTURAL  
SITE PLAN**

**A-1**

SHEET OF





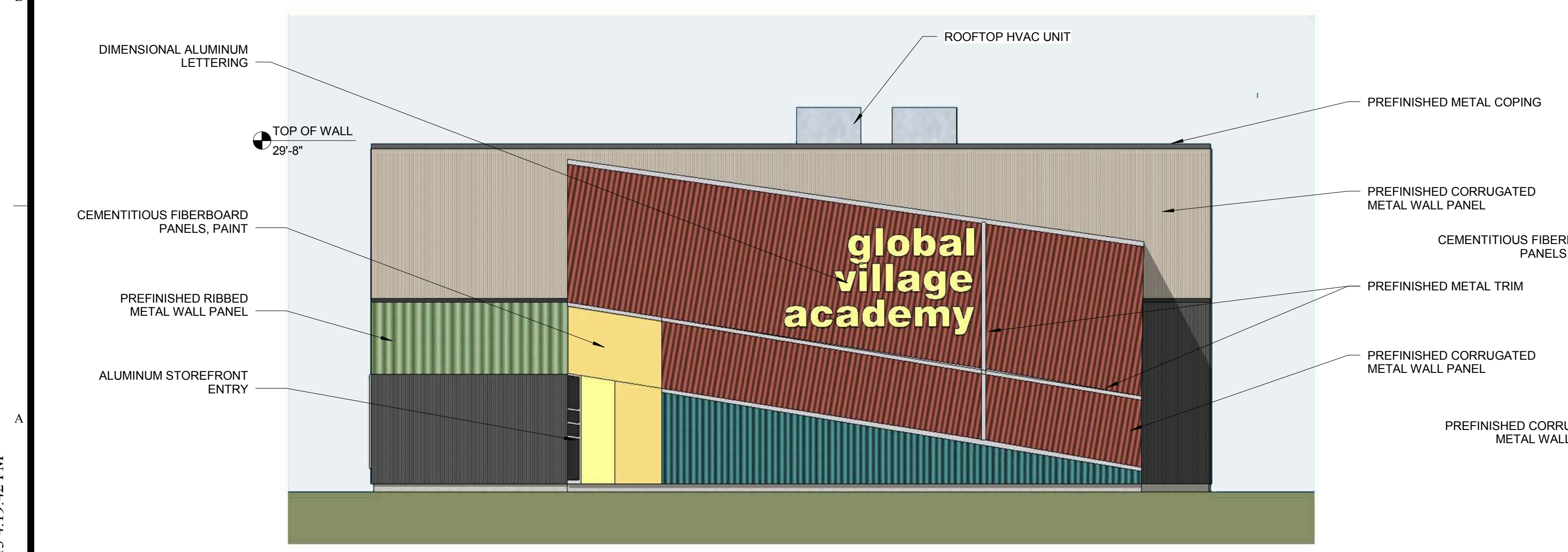
12/5/2013 4:19:42 PM



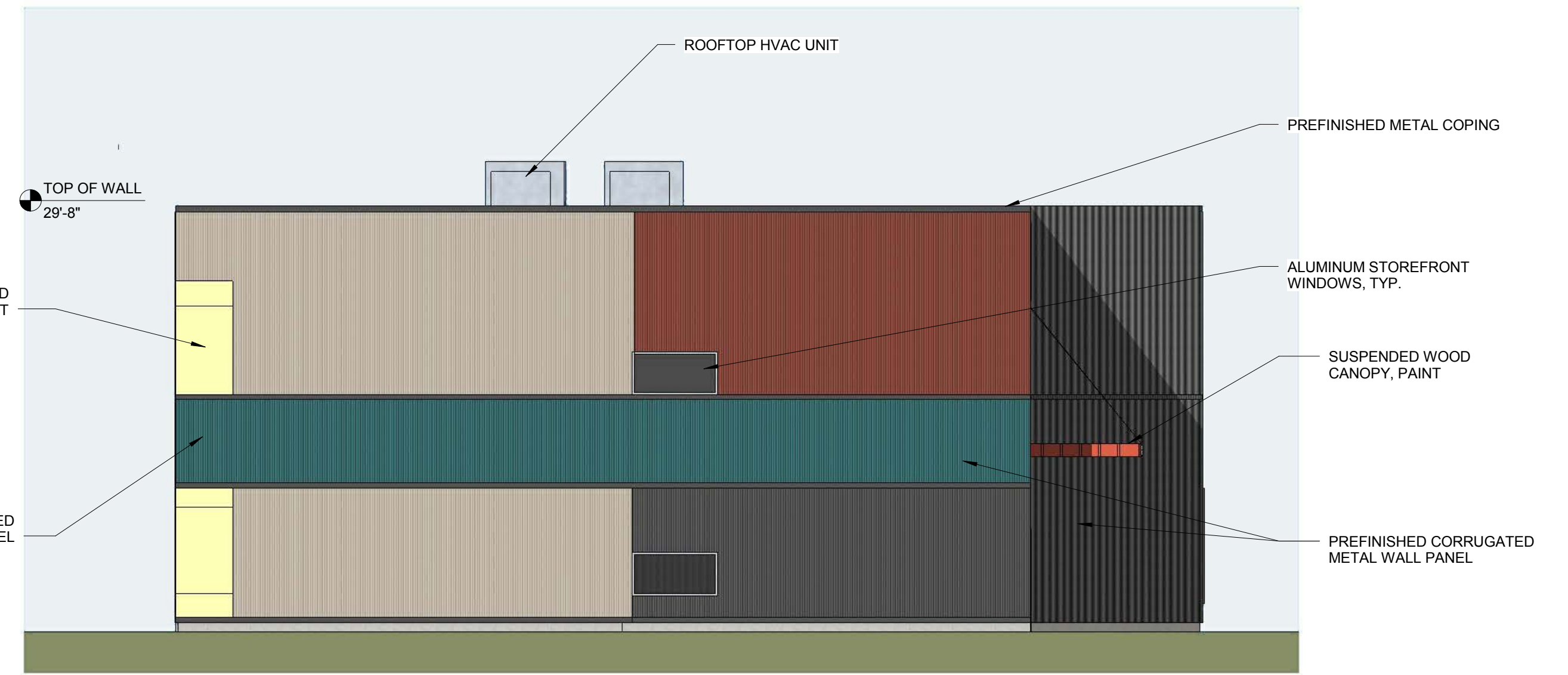
**4 SOUTH ELEVATION**  
1/8" = 1'-0"



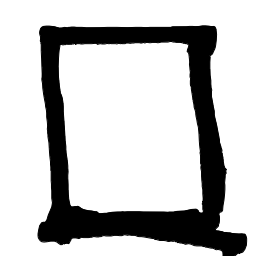
**3 NORTH ELEVATION**  
1/8" = 1'-0"



**1 EAST ELEVATION**  
1/8" = 1'-0"



**2 WEST ELEVATION**  
1/8" = 1'-0"



**SLATERPAULL**  
ARCHITECTS

1515 ARAPAHOE ST. # 400 TOWER ONE  
DENVER CO. 80202 - ph. 303.607.0977  
WWW.SLATERPAULL.COM

CONSULTANT:

NOT FOR CONSTRUCTION

PROJECT:

**Global Village  
Academy - Fort Collins**

East Alameda Drive  
Aurora, CO 80017

OWNER:

**Global Village  
International Schools**

403 S. Airport Blvd. - # A  
Aurora, CO 80017

ISSUE:

DRAWING INFORMATION:

PROJECT NO: 11042.000

CAD DWG FILE:

DRAWN BY: Author

CHECKED BY: Checker

APPROVED BY: Approver

SHEET TITLE:

**EXTERIOR  
ELEVATIONS**

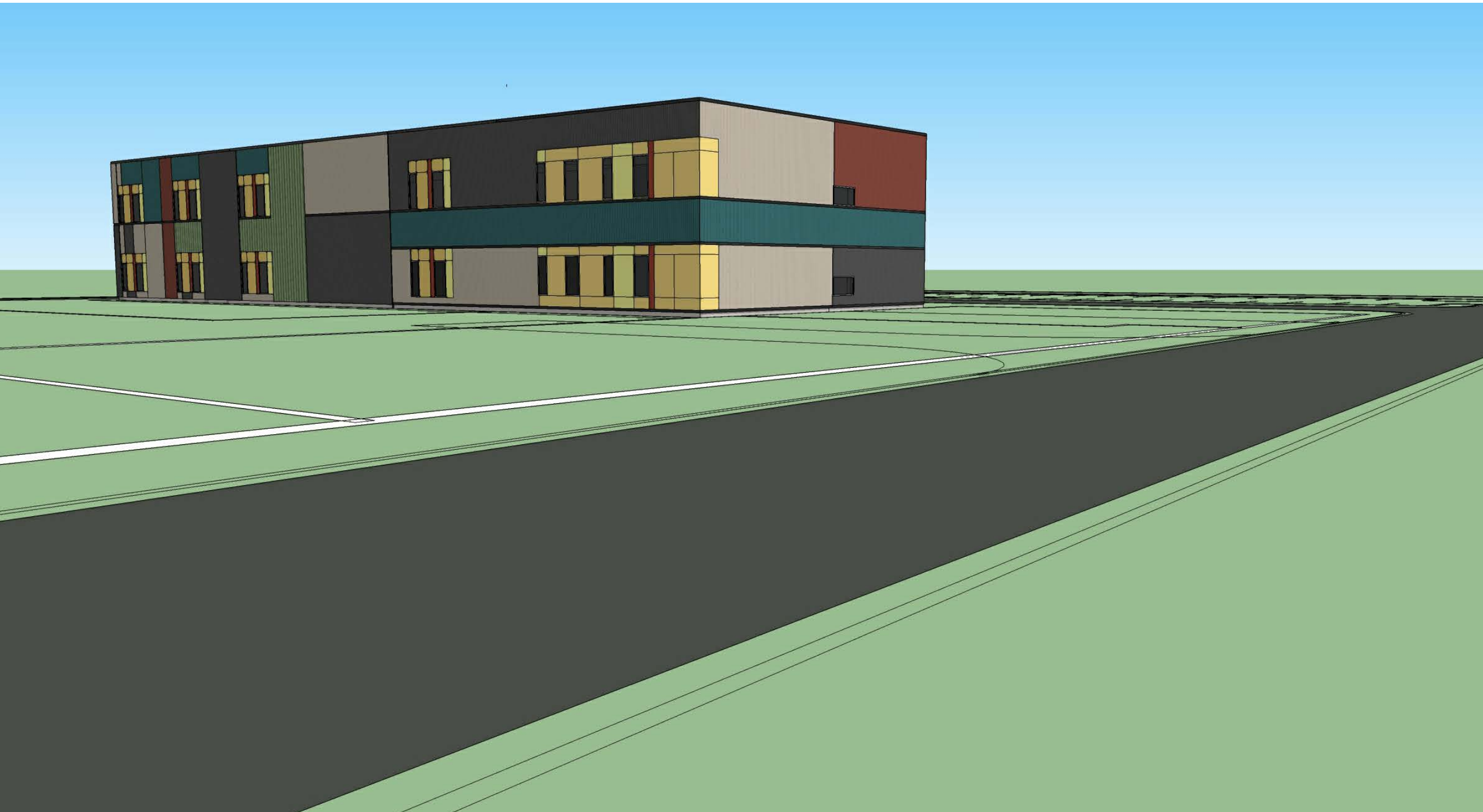
**A-2**

SHEET OF





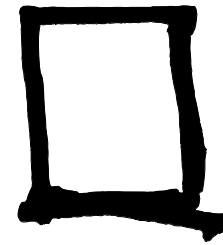
EXTERIOR RENDERING



NORTHWEST PERSPECTIVE



VIEW FROM HORSETOOTH ROAD



SLATERPAULL  
ARCHITECTS

1515 ARAPAHOE ST. # 400 TOWER ONE  
DENVER CO. 80202 - ph. 303.607.0977  
WWW.SLATERPAULL.COM

CONSULTANT:

NOT FOR CONSTRUCTION

PROJECT:

Global Village  
Academy - Fort Collins

East Alameda Drive  
Aurora, CO 80017

OWNER:

Global Village  
International Schools

403 S. Airport Blvd. - # A  
Aurora, CO 80017

ISSUE:

DRAWING INFORMATION:

PROJECT NO: 11042.000

CAD DWG FILE:

DRAWN BY: Author

CHECKED BY: Checker

APPROVED BY: Approver

SHEET TITLE:

EXTERIOR  
PERSPECTIVES

A-3

SHEET

OF