

# embrace northern colorado

*exploring how our choices today shape our communities tomorrow*

## Our Purpose

Embrace Northern Colorado is a nonpartisan nonprofit. Our overall purpose is to facilitate a continuing conversation about the future of our region, create a genuine process that engages the public and help the region forge an alliance to create a vision that delivers a great future for Northern Colorado.

## Our Approach

Strategic visioning is a process that uses the analysis of future alternative scenarios to empower stewards to make wise decisions and establish robust strategies that identify and preserve the widest range of "best" choices and future possibilities. Our role is to act as a neutral convener.

## A Proven Process

Efforts like this are not new. There are numerous examples of regions acting to secure their futures in a changing world. We have chosen to implement a model from the most successful efforts nationally.

values ► trends ► scenarios ► vision ► strategies ► action

## Supporting the Health and Vitality of our Local Communities

Embrace Northern Colorado strongly supports local control and authority. We believe this is an essential element in the successful implementation of a regional vision for the broader Northern Colorado community.

## Leadership Task Force

A 100+ stakeholder regional Leadership Task Force was established in April 2011. The task force represents all of the interests of Northern Colorado. It will work through the fall of 2011. Its mission is to design the approach to engaging the broader Northern Colorado community in creating its vision for the future. See the task force's progress at: <http://www.embracecolorado.com>.

## Preparing for Future Growth

Population growth is inevitable when you live in such an attractive region as Northern Colorado. The Colorado State Demographer reports that 1.2 to 1.4 million people are projected to call Northern Colorado home by 2050, more than a 150% increase over today's base.

## Building Capacity

Northern Colorado comprises many communities—each with its own unique character and amenities. Improving our capacity to collaboratively plan for the future as a metropolitan region is essential.

## Visions of Northern Colorado in 2050 – Scenarios

### - How we use our land affects our future -

Accommodate projected population growth:

+687,000 people or 275,000 housing units\*

S1 - Base – zoning (8 DUA in cities)

S2 – Low density (0.1 DUA low density)

S3 – 35 ac subdivision (0.025 DUA)

S4 – Denser urban (4x S1 density <2, 2x <4 mi)

■ Agricultural Land

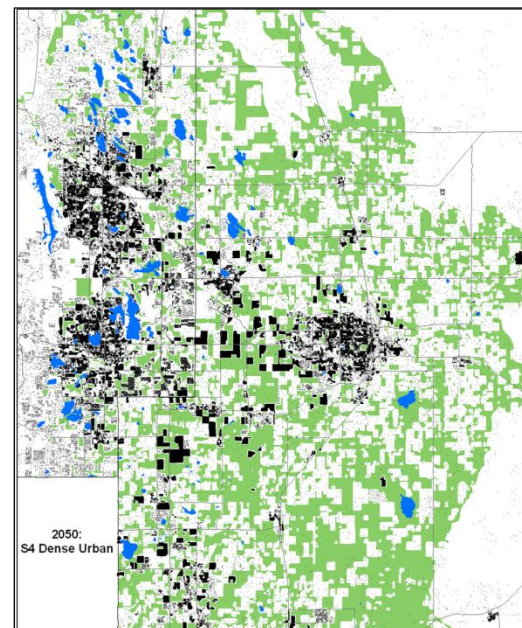
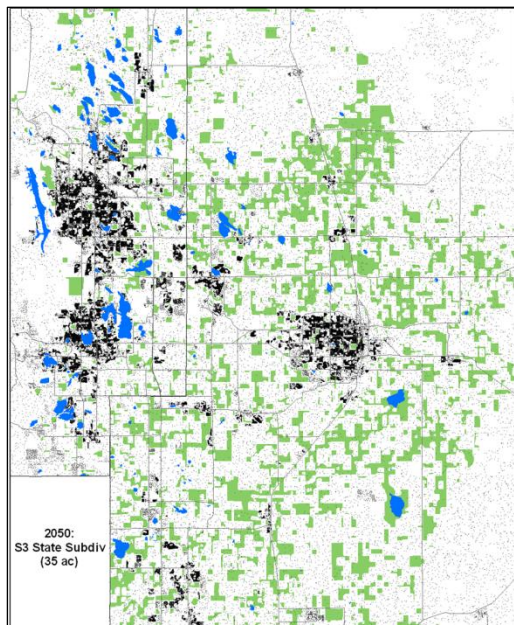
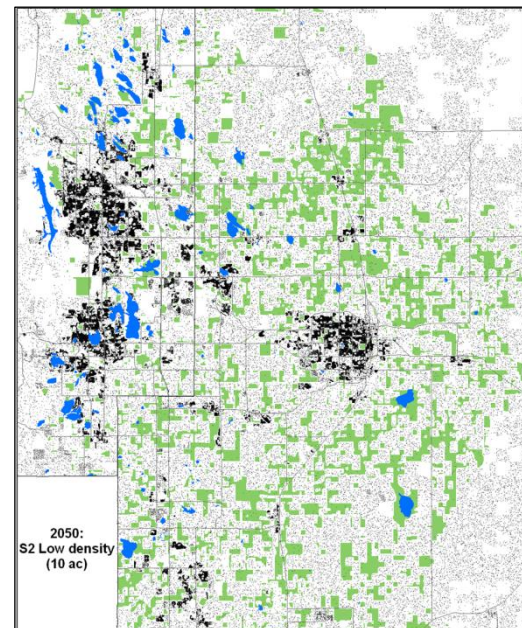
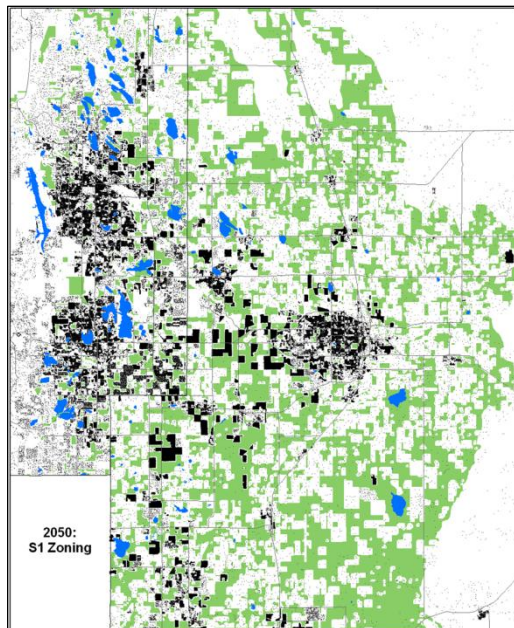
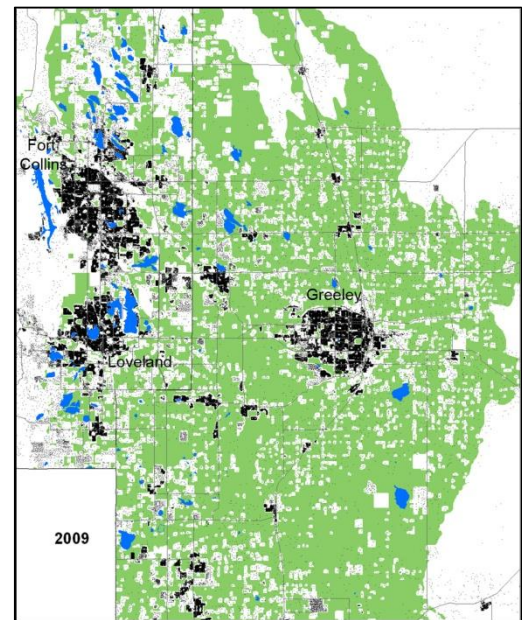
□ Land Consumed

■ Water/Reservoirs

■ Housing Unit

\*Random assignment of development

Source: Dr. David Theobald & Dylan Harrison-Atlas, Dept. of Fish, Wildlife And Conservation Biology, Colorado State University



alternative scenarios