

Climate Wise

The Road to Platinum

1:30 – 2:30 PM

Kathy Collier, Climate Wise

John Armstrong, Climate Wise

Julie Sieving, The Brendle Group



The Road to Platinum

Agenda

- Overview: Higher Tier Requirements & Partner Progress
- GHG Baseline Tool
- Goal setting for your organization
- Sustainability Management Systems

Partner Progress

(75 partners in 2007)

- New/Inactive: 12 partners



- Active: 15 partners



- Bronze: 4 partners
- Silver: 31 partners
- Gold: 4 partners
- Platinum: 9 partners

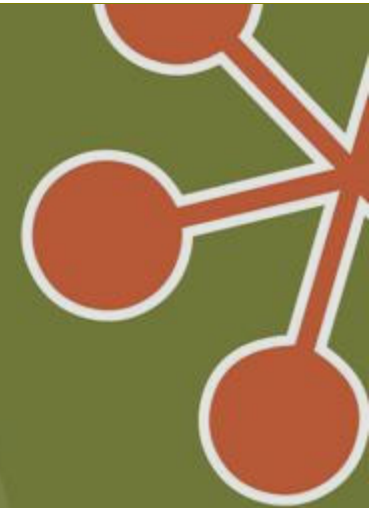
Tier Requirements

GOLD LEVEL

- Submit qualitative summary of activities for *EnviroVation—A Climate Wise Showcase*
- Serve on Advisory Committee OR mentor a new partner, AND (if requested) plan/host a “Talk and Tour”
- **Complete GHG Baseline Tool**
- Create and share GHG reduction goal
- Participate in at least one City program—ex: Electric Energy Efficiency Program, Green Energy program, sponsor Bike To Work Day, Transfort’s PassFort program, etc.

Tier Requirements

PLATINUM LEVEL



- Demonstrate and maintain climate neutral status
- OR Earn ENERGY STAR label for your facility
- OR Earn a LEED certification for all or part of your facility
- OR Participate in voluntary carbon trading program or registry
- OR Develop and share w/staff a management system with climate focus (ISO 14001, SMS, etc.)
- OR implement an innovative program or initiative with significant climate benefits (requires advisory committee approval)

- Participate in GREEN Works—implement 2 employee challenges per year to educate or encourage employees to help you move forward on conservation efforts.

Summary

- Climate Wise tiers challenge businesses to reach higher levels of performance AND reap higher benefits

Bronze/Silver: Participation and Early Action

Gold/Platinum: Sustained Action & Outreach

- New Tools make it easier to participate, show progress, and increase performance

GHG baseline tool

- Partner is required to complete before setting reduction goal (see Gold partner level)
- Useful tracking tool, regardless of partner level
- Download (requires MS Excel):
fcgov.com/climatewise/resources.php

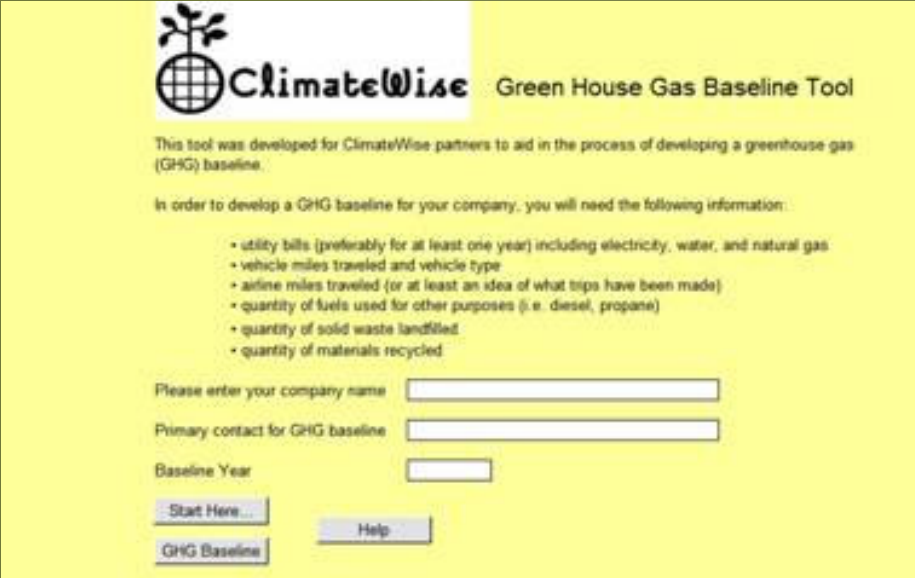



The screenshot shows the 'ClimateWise Green House Gas Baseline Tool' interface. At the top left is the ClimateWise logo, which consists of a globe with a tree growing from it. To the right of the logo is the text 'ClimateWise Green House Gas Baseline Tool'. Below this, a paragraph states: 'This tool was developed for ClimateWise partners to aid in the process of developing a greenhouse gas (GHG) baseline.' This is followed by the instruction: 'In order to develop a GHG baseline for your company, you will need the following information:'. A bulleted list of requirements follows: '• utility bills (preferably for at least one year) including electricity, water, and natural gas', '• vehicle miles traveled and vehicle type', '• airline miles traveled (or at least an idea of what trips have been made)', '• quantity of fuels used for other purposes (i.e. diesel, propane)', '• quantity of solid waste landfilled', and '• quantity of materials recycled'. Below the list are three input fields: 'Please enter your company name', 'Primary contact for GHG baseline', and 'Baseline Year'. At the bottom of the form are four buttons: 'Start Here...', 'Help', and 'GHG Baseline'.

Overview

- Tabbed MS Excel spreadsheet
- Macros must be enabled (see: Tools | Macro | Security)
- What you will need
 - Monthly utility bills for baseline year
 - Trash and recycling volumes or estimates
 - Vehicle mileage by vehicle type or fuel consumption

Completing your GHG baseline



 **ClimateWise** Green House Gas Baseline Tool

This tool was developed for ClimateWise partners to aid in the process of developing a greenhouse gas (GHG) baseline.

In order to develop a GHG baseline for your company, you will need the following information:

- utility bills (preferably for at least one year) including electricity, water, and natural gas
- vehicle miles traveled and vehicle type
- airline miles traveled (or at least an idea of what trips have been made)
- quantity of fuels used for other purposes (i.e. diesel, propane)
- quantity of solid waste landfilled
- quantity of materials recycled

Please enter your company name

Primary contact for GHG baseline

Baseline Year

Climate Wise

The Road to Platinum

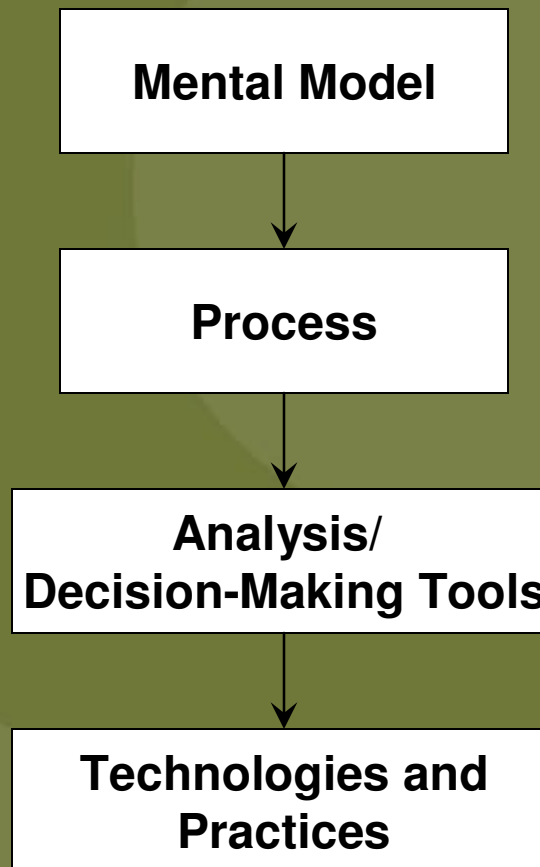
Goal Setting :: Sustainability Management Systems

Julie Sieving, The Brendle Group

jsieving@brendlegroup.com | 207.0058



The Process “Road”



Goal Setting - Topics

- Greenhouse gas
- Four areas of Climate Wise program
 - Energy (kWh, therms, btus, etc.)
 - Transportation (VMTs, gallons of use, etc.)
 - Waste (pounds, % diversion, etc.)
 - Water (gallons, etc.)
- Others, including “non-quantifiable”
 - Generalized counts
 - Awareness and education
 - Participation

Example Goals

- Energy: Poudre School District – 1.5% yearly consumption reduction over ten year period
- Transportation: Colorado State University – 25% reduction of fleet petroleum use by 2012
- Waste: The Brendle Group – zero waste by 2010
- Water: LEED – 30% annual indoor water use

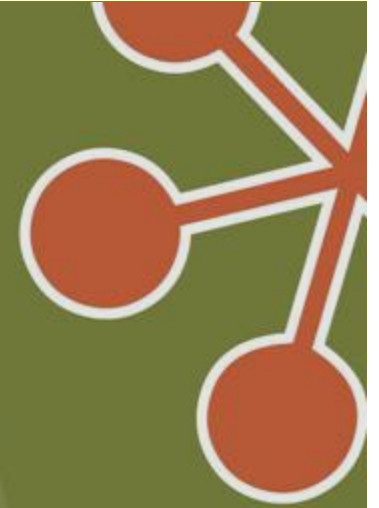
Goal Setting Resources

- ENERGY STAR (www.energystar.gov)
- LEED (www.usgbc.org)
- Fort Collins Utilities Keep Current (www.fcgov.com/conservation/keepcurrent.php)
- Industrial, Commercial, and Institutional Resource Guide (ici.coloradowaterwise.org)
- Zero Energy Research Institute (www.zeri.org)

Goal Setting - Format

- S.M.A.R.T.
- Specific
- Measurable
- Attainable
- Realistic
- Time bound

S.M.A.R.T. Example



To institute paper reduction practices, each department will reduce overall annual paper purchases by 10 percent by the end of 2006.

Specific

Time bound

Measurable

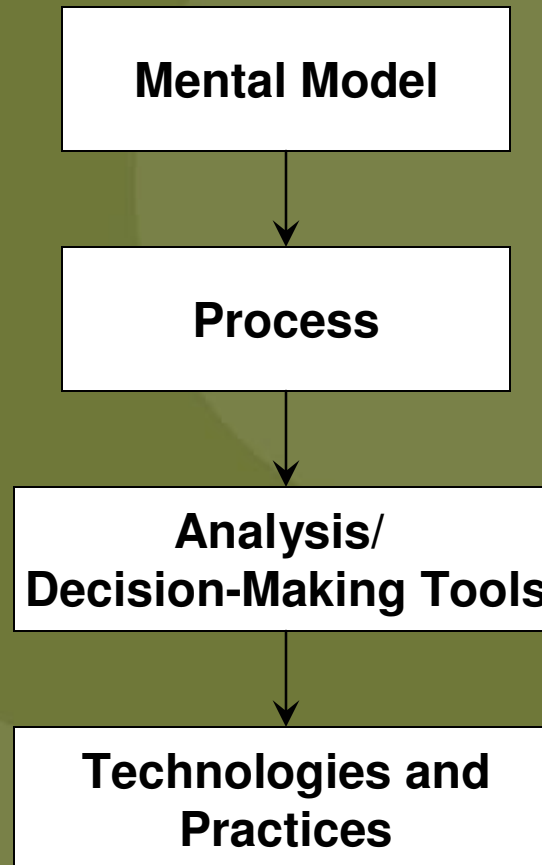
Achievable/realistic??



The Road to Platinum

Sustainability Management Systems

Organizational Change



What is an SMS?

It combines a sustainability framework and where you want to go.....



with a management system and a vehicle for getting there.



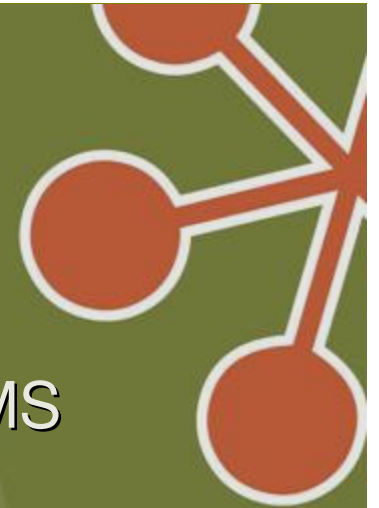
Environmental Management System

- Deming quality model
- Plan-Do-Check-Act
- ISO14001 Standard
- Plans for immediate and long-term impacts of products and services



“SMS’s”

- Overlays a sustainability framework onto an EMS
- The Natural Step – most common sustainability framework
- Other frameworks include:
 - Natural Capitalism
 - The ZERI Approach
 - Ecological Footprint
 - Cradle to Cradle



SMS

PROCESS

Policy

Develop Sustainability Policy

Planning (ABCD Analysis)

- Map and Prioritize Impacts
- Develop Strategies
- Set Objectives and Targets
- Link and Develop Programs

Implementation Actions

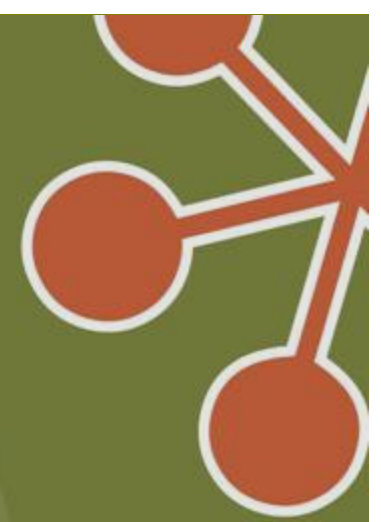
- Assign Responsibilities
- Train all Employees
- Communicate Internally and Externally
- Documentation System (what and who)
- Departments and teams make improvements

Management Actions

- Visibly Support the Program
- Conduct a Formal Review Annually
- Make Changes to Maintain Effectiveness

Confirmation Actions

- Monitor and Measure Progress
- Conduct Checks to Confirm Success



SMS Purpose

- Implies visible management support
- Reflects organizational culture and style
- Is consistent with other organizational policies
- Applies to all major operations
- States beliefs and intentions (what), as well as ways for meeting intentions (how)

SMS Purpose (continued)

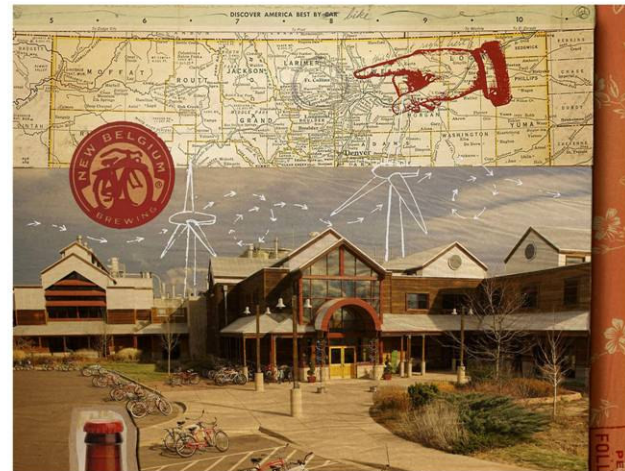
- Provides direction for decision-making
- Provides a foundation for planning and action
- Is documented and clearly communicated to all employees
- Drives change in the workplace
- Inspires commitment
- Serves as a unifying theme

SMS Examples

- *Small business:* The Brendle Group
- *Manufacturing:* New Belgium
- *School District:* Poudre School District
- *Higher Education:* Colorado College
- *Ski Resort:* Keystone

SMS Examples

- Objectives and Guiding Principles
- Strategic Priorities
- Target Areas
- Tools
- Management



*New Belgium Brewing Company, Inc.
Sustainability Management System
August, 2007*

Steps for Getting There



- An SMS starts with the individual
- Buy-in from all stakeholders
- Empower staff and students
- Develop indicators to track progress
- Commit to ongoing awareness and training for staff and students
- Publish annual report to document progress

5 Steps to Get Started

- Establish a sustainability team or working group for your organization.
- Involve all departments from organization.
- Talk to other organizations with existing SMSs or SMPs.
- Ask: Where are we?
- Ask: Where do we want to go?
- Work for buy-in – top down and bottom up.

Questions / discussion

Thank you!