

2016 CityWorks 101

Rick Richter
Director of Infrastructure Services

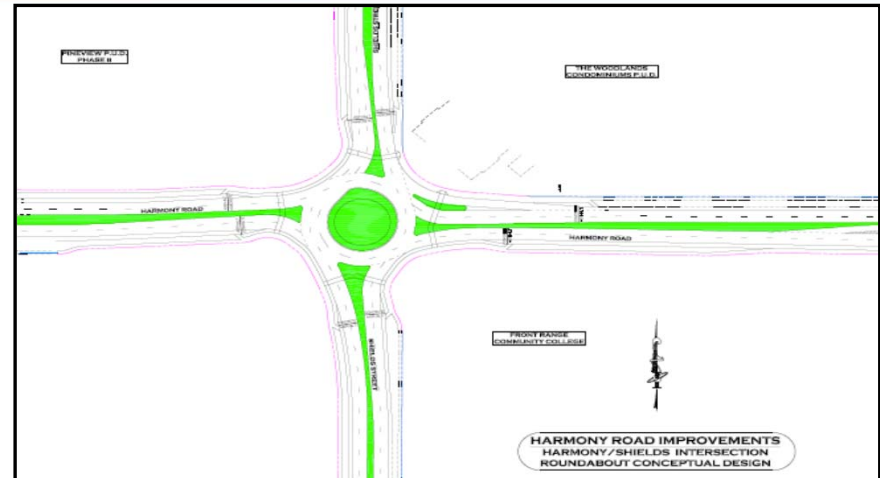
April 2016

Engineering Department

- Administration
- Capital Projects
- Survey
- Development Review
- Right of Way Inspection

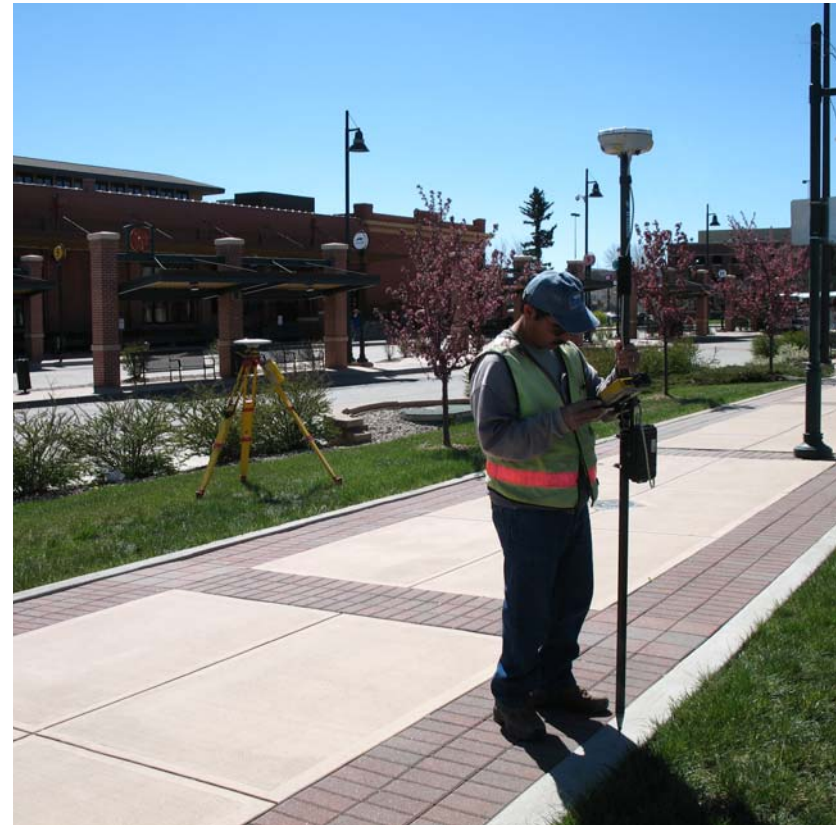
Capital Projects

- Manages Transportation Capital Projects
- Manages the City Bridge Program
- Currently the Project Work Load is \$45M to \$50M in Various Stages



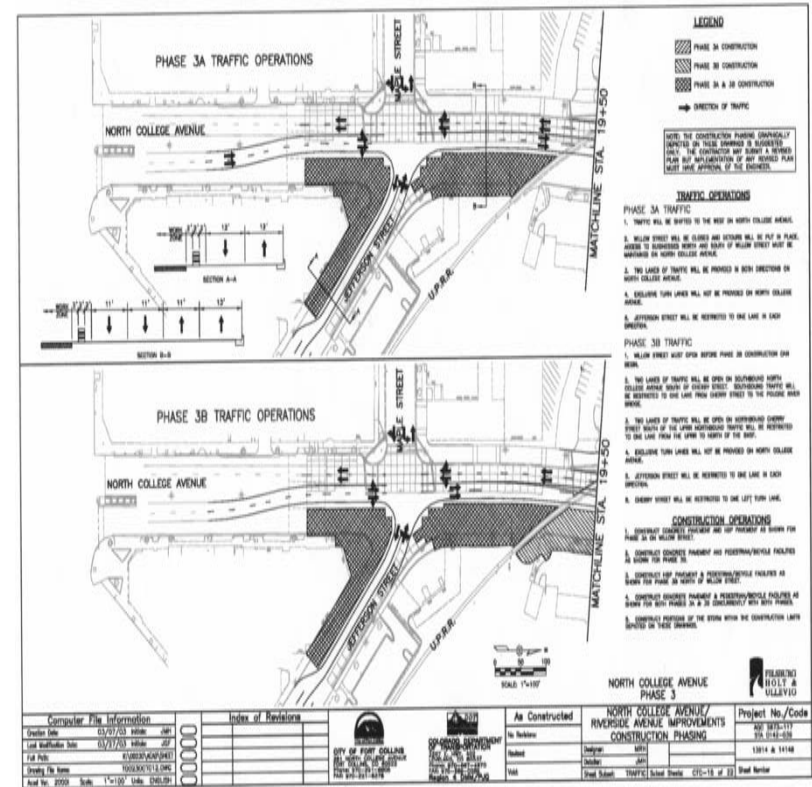
Survey

- Two Full Time Survey Crews
- Primary Duties Construction Project Surveying
- Surveying for Several City Departments



Development Review

- Reviews All Developments for Engineering Compliance
- Number of Submittals at an all Time High



Right of Way Inspection

- Inspection of All Development Work in the Rights of Way
- Management of Right of Way Permits
- Downtown Portable Signs and Eating Areas Within the Rights of Way



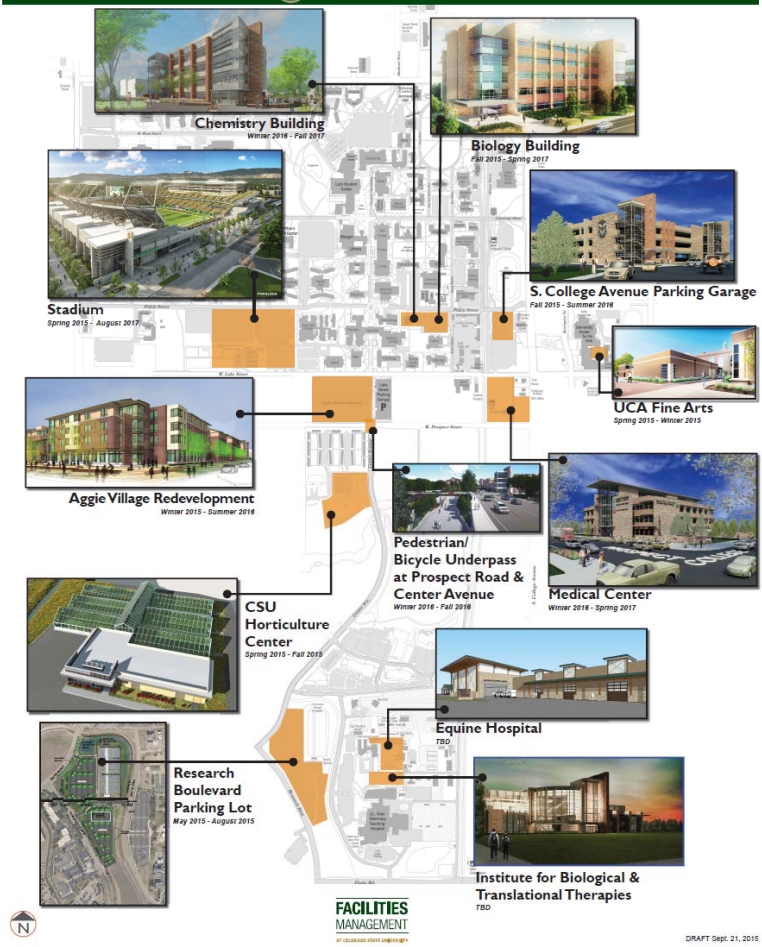
Plan, Coordinate, Construct,
Inspect and Accept Public
Infrastructure

Ensure Public Infrastructure is
Constructed in a Timely, Safe,
and Maintainable Manner

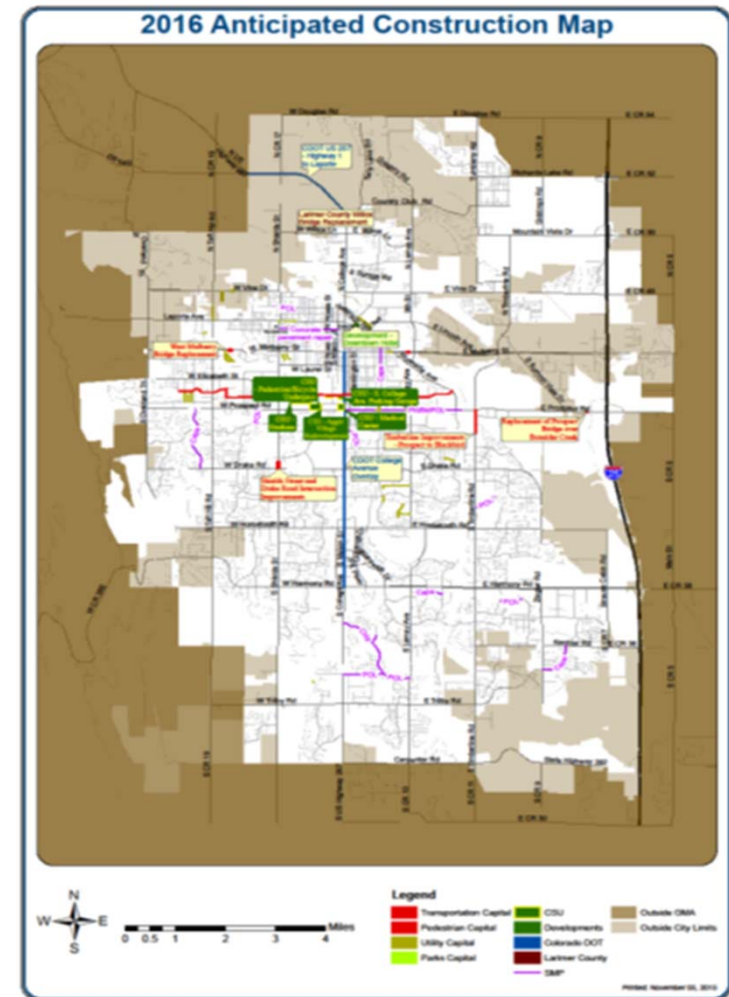




Upcoming University Projects Starting Spring 2015

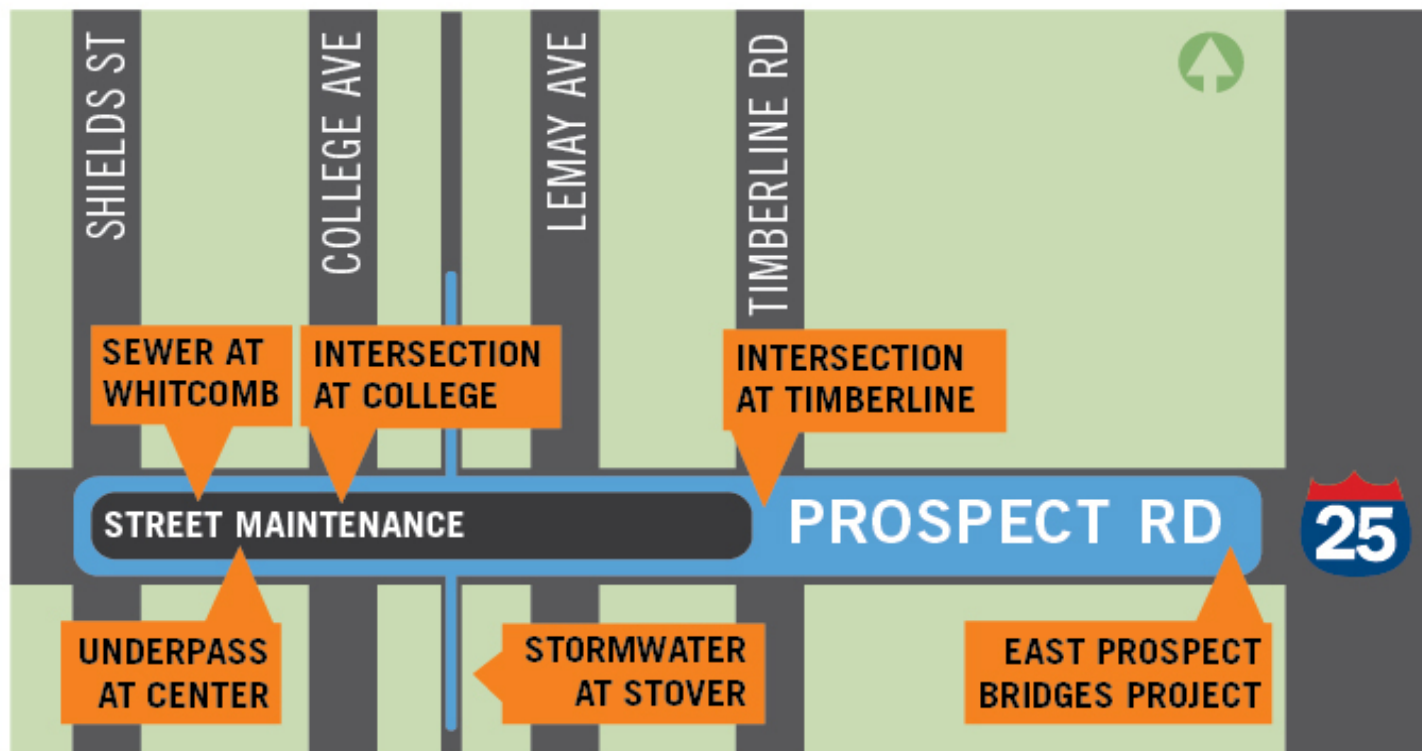


- Lincoln Corridor Improvements
- Drake and Shields Intersection Improvements
- CDOT College Avenue Re-Surfacing
- Foothills Mall Pedestrian Grade Separated Crossing - 2016
- CDOT HY 287 Resurfacing HY 1 to Laporte Bypass- 2016

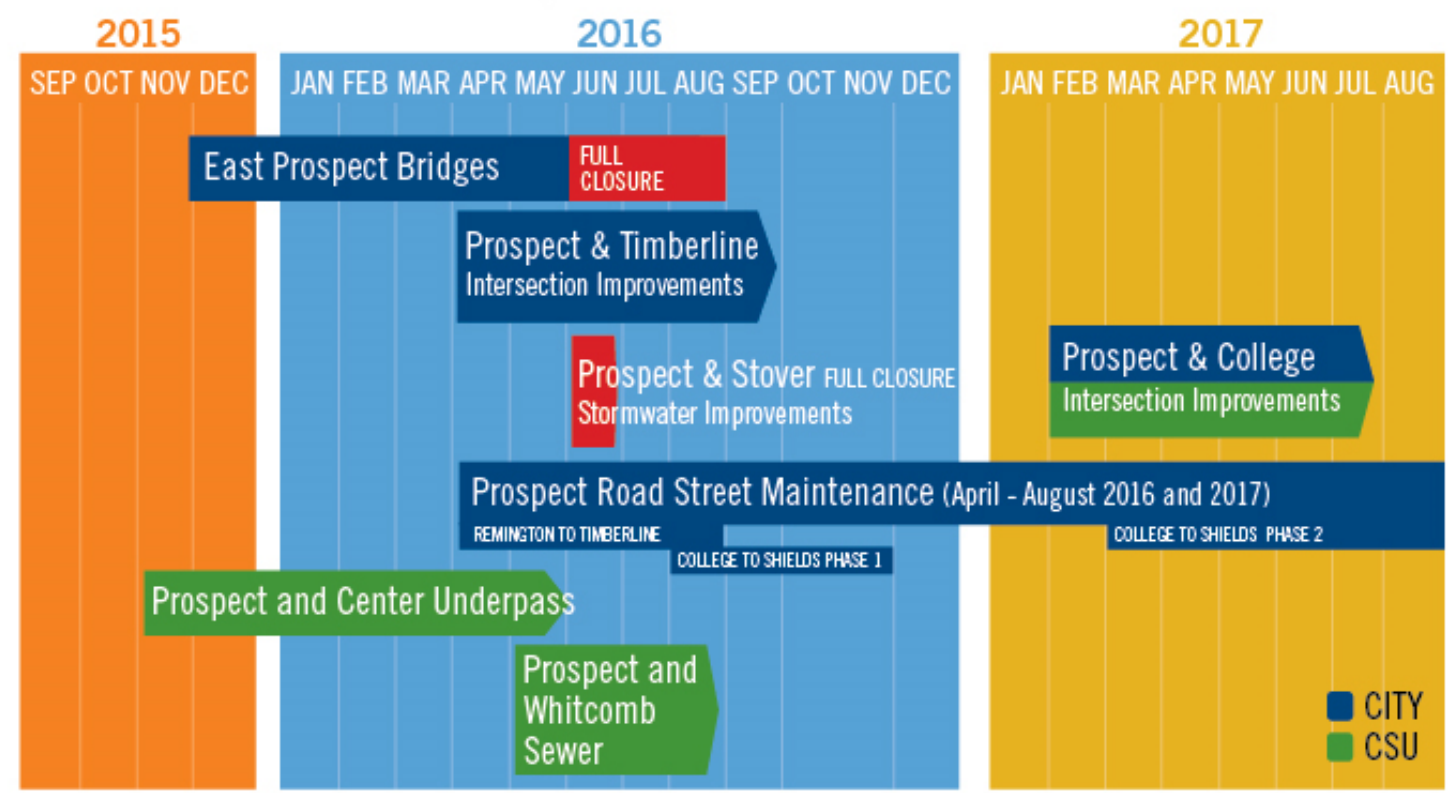


- Timberline and Prospect Improvements
Project Start – May 2016 Lane Closures
- East Prospect Boxelder Bridges
Project Start – March 2016
Full Prospect Closure May through July
- Prospect & Stover Storm sewer Project
Start – Spring 2016 Two Week Closure
- Prospect Overlay Riverside to Remington
Start – March through June 2016 Lane Closures
- Prospect/College Intersection 2017

■ PROSPECT ROAD IMPROVEMENTS SHIELDS TO I-25, ENDING AUGUST 2017



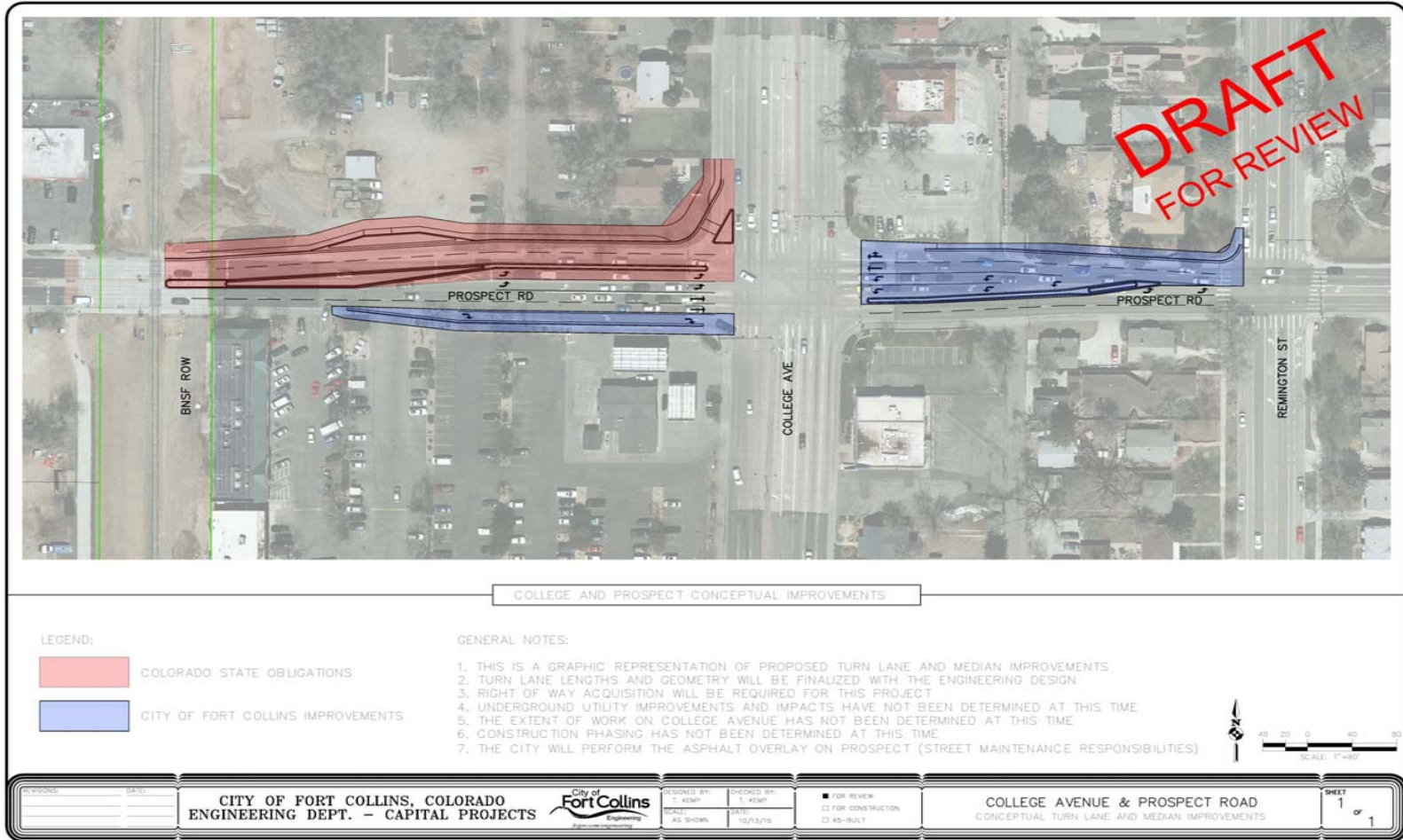
PROSPECT ROAD IMPROVEMENTS TIMELINE SHIELDS TO I-25, ENDING AUGUST 2017



Questions

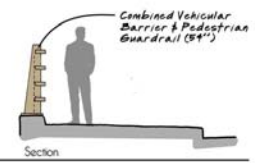
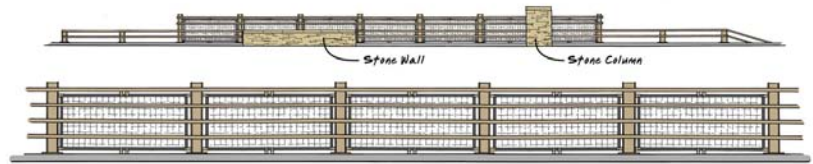
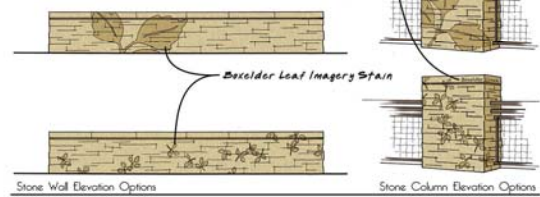
Rick Richter - Director of Infrastructure Services

S:\Engineering\Departments\Survey\Projects\Planning\West Centr Area Plan ROW\LODD Prospect Lane\img\TRK Layout\CSU_City Exhibit.dwg, 10/13/2015 11:42:22 PM

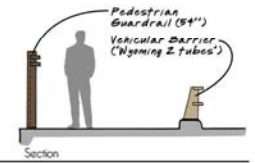




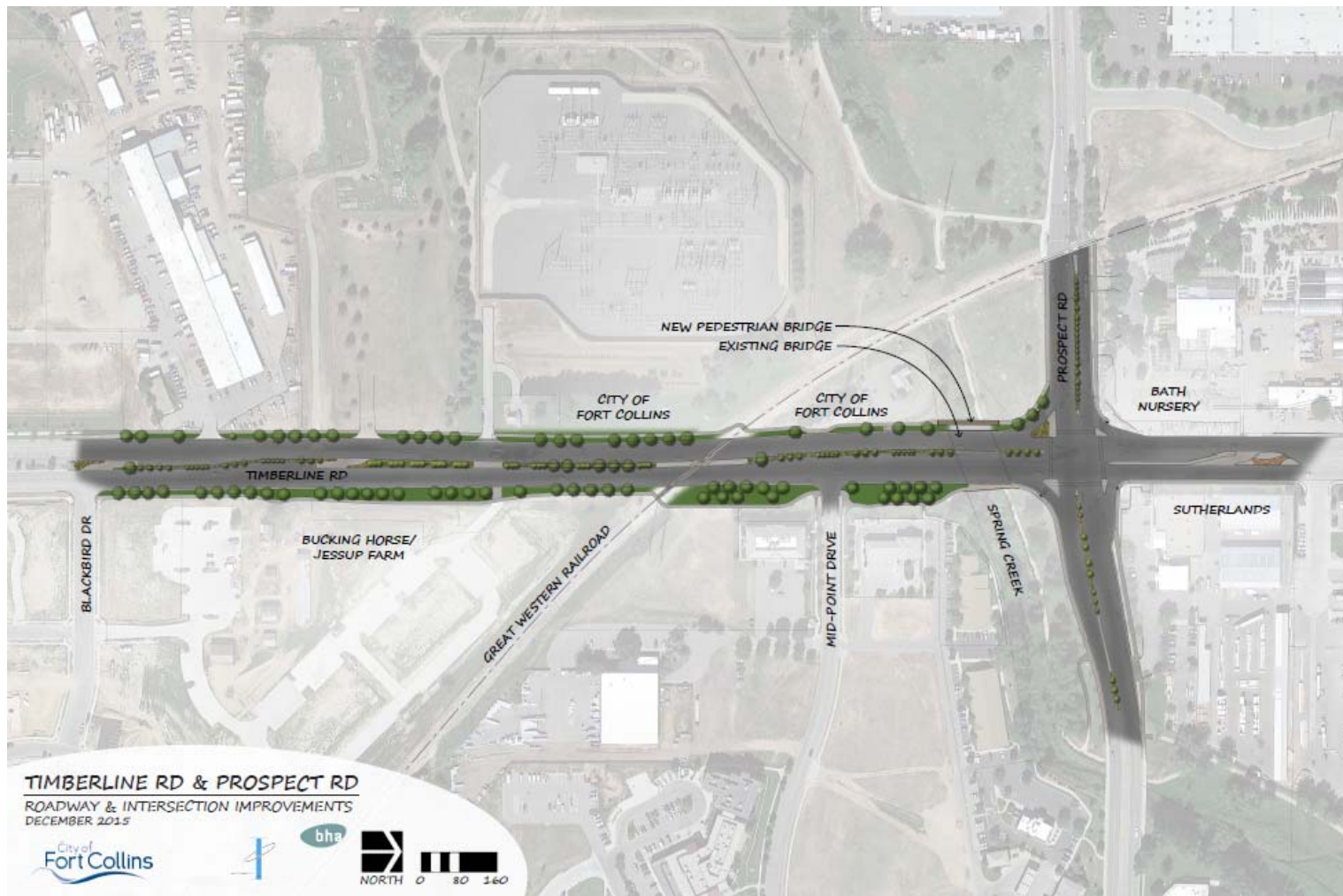
BOXELDER BRIDGE Bridge Concepts
City of Fort Collins
090915



Option A



Option B



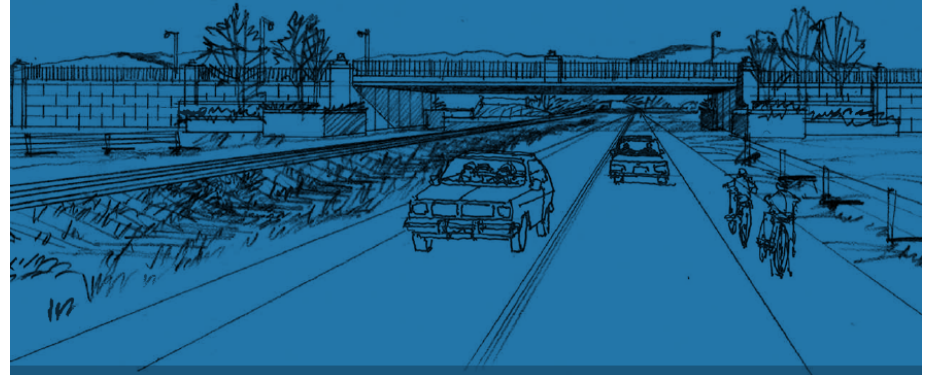


Construction: 2016 - 2017





Improved Interchange



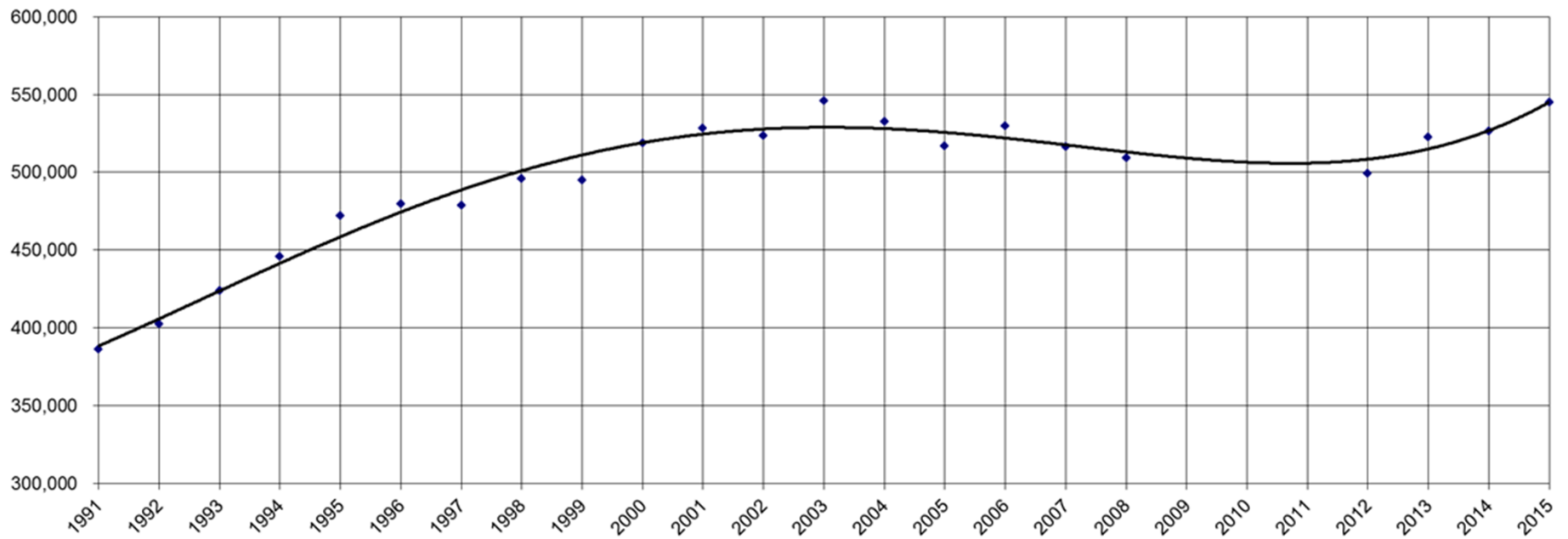
Existing Interchange





- North College Improvements
- Mulberry Bridge Replacement Support
- Horsetooth/Timberline Intersection
- Remington Greenway
- Vine and Shields Roundabout
- Lemay Avenue Improvements
- CDOT HY 287/College Avenue Resurfacing
- Foothills Mall College Avenue Improvements
- Larimer County North Shields Street Bridge and Road Improvements

Fort Collins Traffic Volume Trend on Arterial Streets (1991 - 2015)

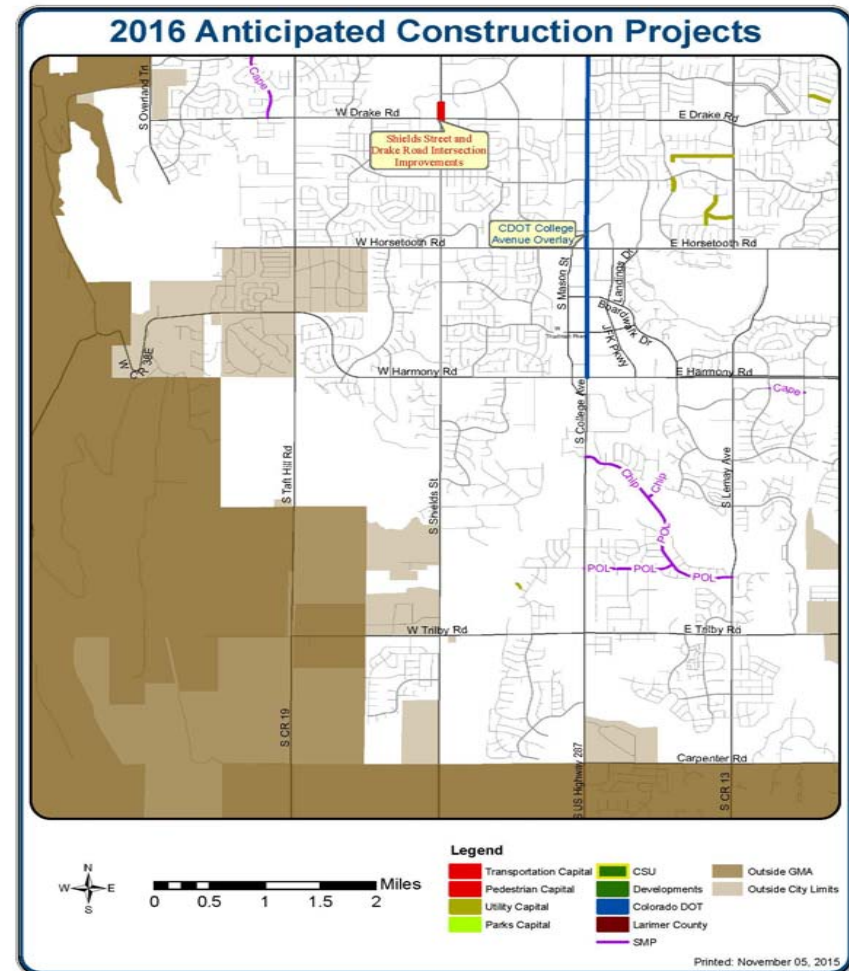




- City has awarded \$3.4 M construction contract to Mountain Constructors
- 175 Calendar Day Contract
- Construction (late April through late October, 2016)
- All directions of travel will remain open at all times
- Expect delays - many single lane conditions will exist
- City has implemented innovative contracting to encourage more efficient road building methods

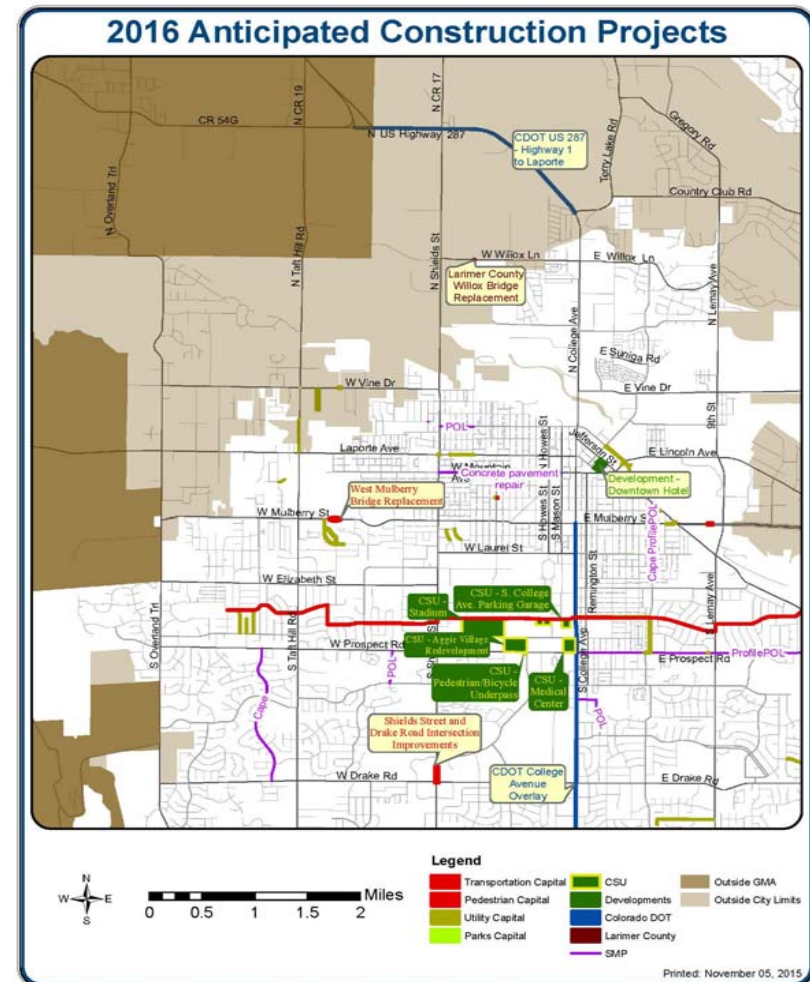
South West Quadrant

- Impacts to the Transportation System
 - Signal Timing
 - Detour Routes
 - Accident Rates



North West Quadrant

- Impacts to the Transportation System
 - Signal Timing
 - Detour Routes
 - Accident Rates



South East Quadrant

- Impacts to the Transportation System
 - Signal Timing
 - Detour Routes
 - Accident Rates

